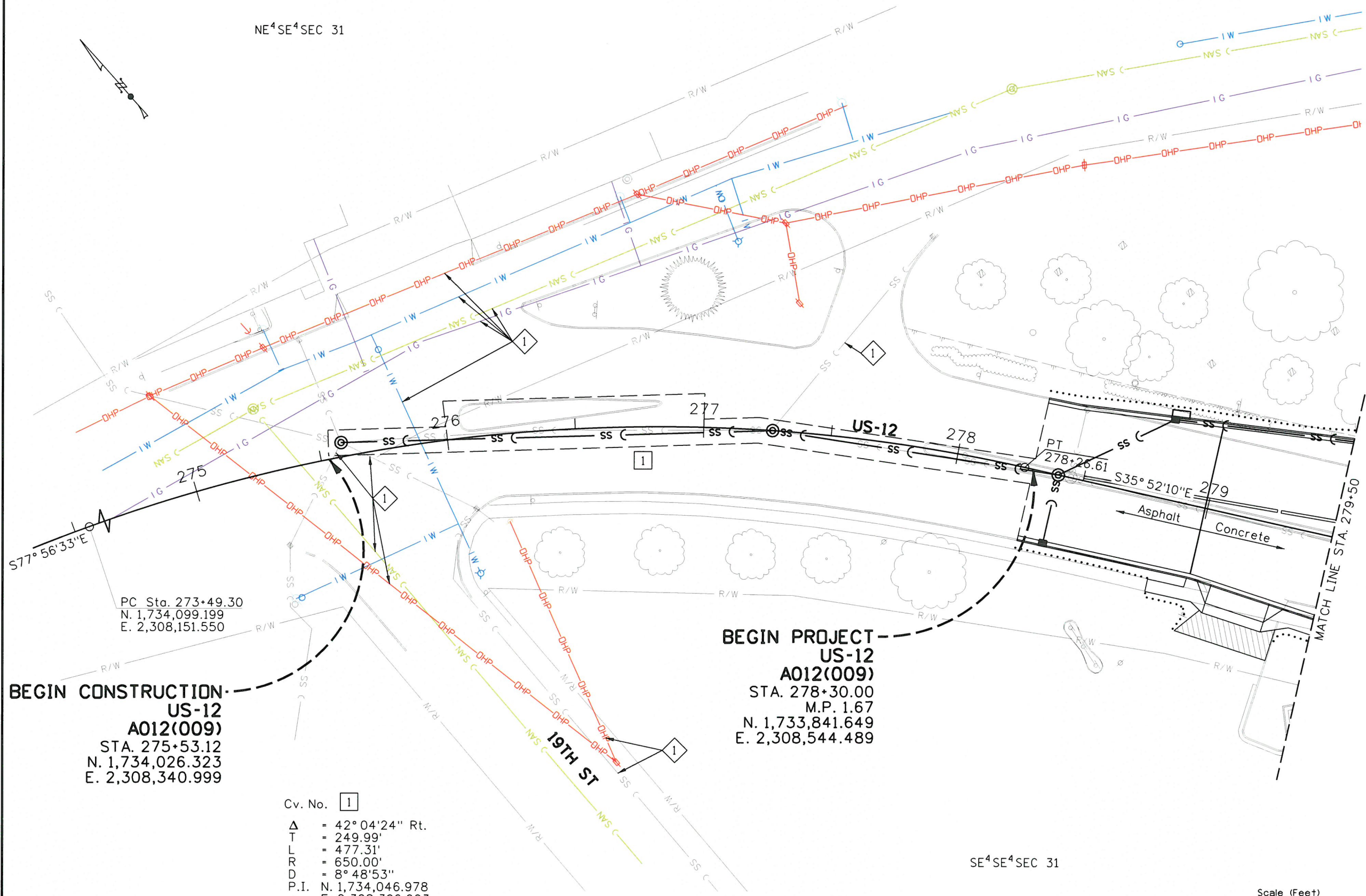


T36N, R5W, B.M.

NE⁴SE⁴SEC 31

1 Retain and Protect

U:\Bois\Projects\Clients\4006-ITD\314-4006-046 US-12,18th Clearwater\995\cs\CADD\DON\Sheets\12009_util_001.sht 1/29/2018 8:53:31 AM



BEGIN CONSTRUCTION
US-12
A012(009)
 STA. 275+53.12
 N. 1,734,026.323
 E. 2,308,340.999

BEGIN PROJECT
US-12
A012(009)
 STA. 278+30.00
 M.P. 1.67
 N. 1,733,841.649
 E. 2,308,544.489

Cv. No. **1**
 Δ = 42° 04' 24" Rt.
 T = 249.99'
 L = 477.31'
 R = 650.00'
 D = 8° 48' 53"
 P.I. N. 1,734,046.978
 E. 2,308,396.023

- NOTES:**
- Locations of Existing Utilities and Relocations Shown on the Plans are Approximate and Shall be Field Verified in Coordination with Utility Companies.
 - Retain and Protect all Utilities Unless Otherwise Noted.

REVISIONS			
NO.	DATE	BY	DESCRIPTION

DESIGNED	DJM
DESIGN CHECKED	JLJ
DETAILED	BRB
DRAWING CHECKED	JLJ

SCALES SHOWN ARE FOR 11" X 17" PRINTS ONLY
 CADD FILE NAME 12009_util_001.sht
 DRAWING DATE: January, 2018

IDAHO TRANSPORTATION DEPARTMENT



Parametrix

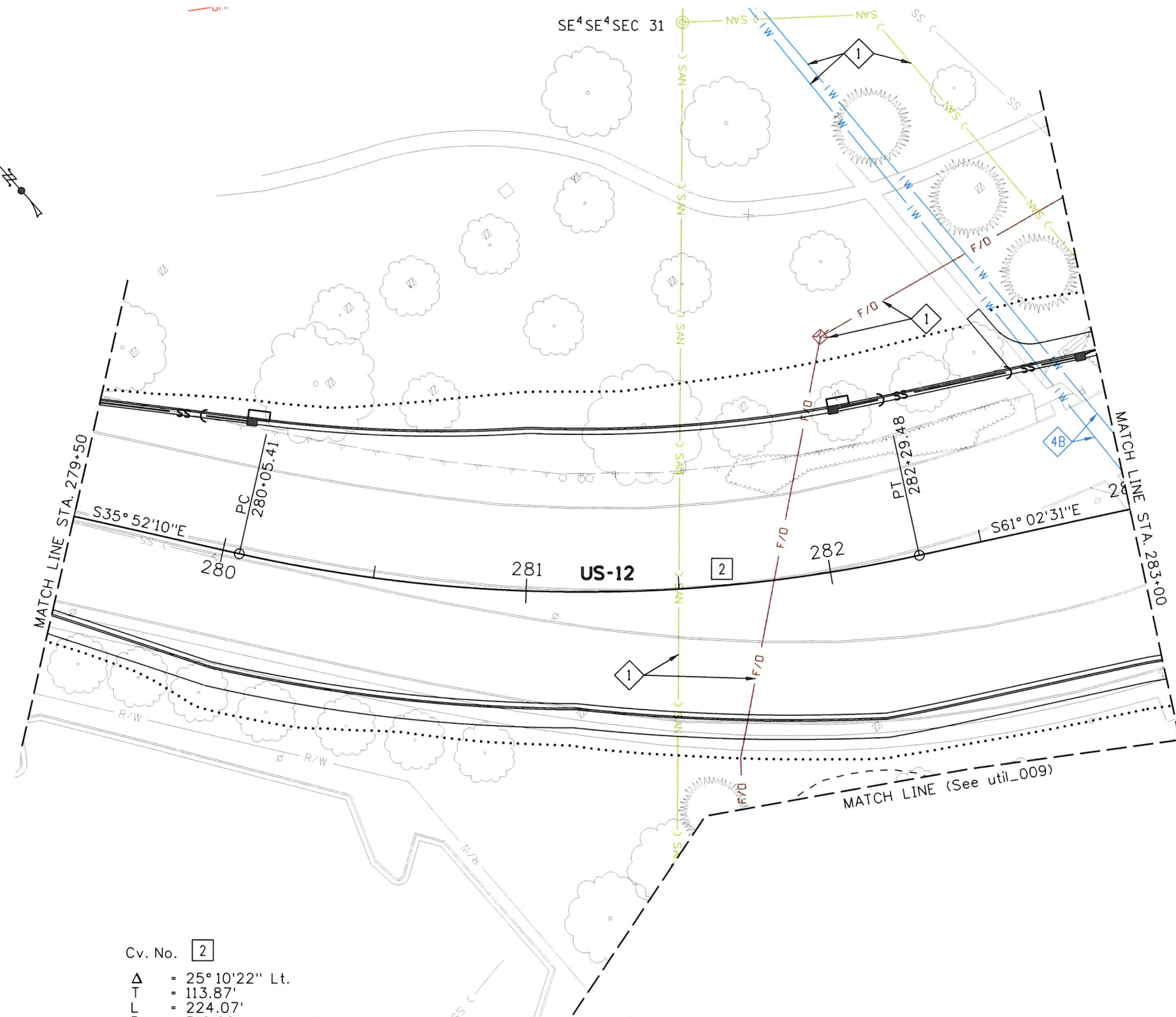
PROJECT NO.
 A012(009)

UTILITY PLAN SHEET
US-12, 18TH ST TO CLEARWATER
RV BR, LEWISTON
 BEGIN TO STA. 279+50

English
 COUNTY Nez Perce
 KEY NUMBER 12009
 SHEET 2 OF 11

U:\Bols\Projects\Clients\4006-ITD\314-4006-046 US-12,18th Clearwater\985vcs\CADD\DCM\Sheets\2009_Util_002.sht 1/29/2018 8:53:33 AM

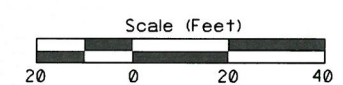
T36N, R5W, B.M.



Cv. No. 2
 Δ = 25° 10' 22" Lt.
 T = 113.87'
 L = 224.07'
 R = 510.00'
 D = 11° 14' 04"
 P.I. N. 1,733,607.228
 E. 2,308,713.990

- 1 Retain and Protect
- 4B Replace Existing Lewiston Water Line By Roadway Contractor at Project Expense

- NOTES:**
1. Locations of Existing Utilities and Relocations Shown on the Plans are Approximate and Shall be Field Verified in Coordination with Utility Companies.
 2. Retain and Protect all Utilities Unless Otherwise Noted.



REVISIONS			
NO.	DATE	BY	DESCRIPTION

DESIGNED	DJM
DESIGN CHECKED	JLJ
DETAILED	BRB
DRAWING CHECKED	JLJ

SCALES SHOWN ARE FOR 11" X 17" PRINTS ONLY
 CADD FILE NAME: 12009_util_002.sht
 DRAWING DATE: January, 2018

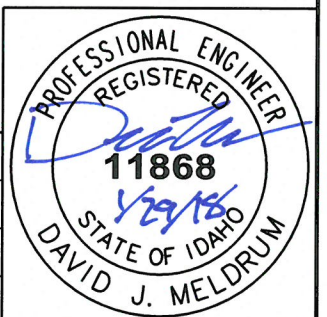
IDAHO TRANSPORTATION DEPARTMENT

Parametrix

PROJECT NO.
A012(009)

UTILITY PLAN SHEET
US-12, 18TH ST TO CLEARWATER RV BR, LEWISTON
 STA. 279+50 TO STA. 283+00

English
 COUNTY Nez Perce
 KEY NUMBER 12009
 SHEET 3 OF 11



2:02:41 PM

1/29/2018

U:\Bois\Projects\Clients\4006-ITD\314-4006-046 US-12,18th Clearwater\CADD\DCM\Sheets\2009_util_003.sht

T36N, R5W, B.M.

SW⁴SW⁴SEC 32 MATCH LINE (See util_010)

Cv. No. **4**
 Δ = 38° 00' 59" Rt.
 T = 120.57'
 L = 232.23'
 R = 350.00'
 D = 16° 22' 13"
 P.I. N. 1,733,269.741
 E. 2,308,908.819

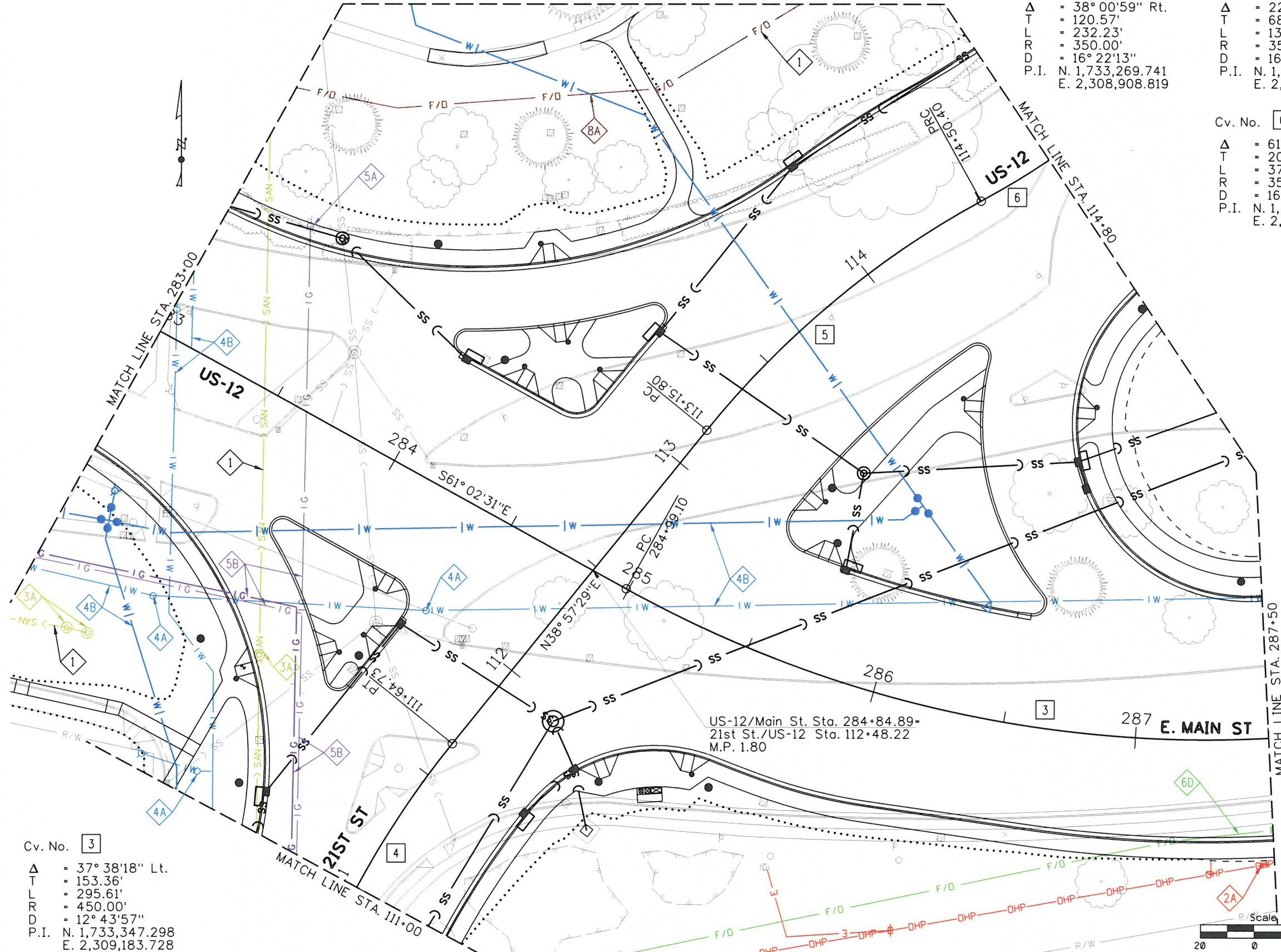
Cv. No. **5**
 Δ = 22° 02' 00" Rt.
 T = 68.14'
 L = 134.59'
 R = 350.00'
 D = 16° 22' 13"
 P.I. N. 1,733,533.959
 E. 2,309,122.457

Cv. No. **6**
 Δ = 61° 09' 21" Lt.
 T = 206.81'
 L = 373.58'
 R = 350.00'
 D = 16° 22' 13"
 P.I. N. 1,733,667.292
 E. 2,309,362.909

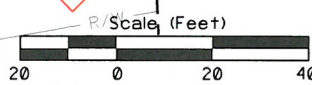
- 1 Retain and Protect
- 2A Relocate Existing Avista Power Pole, Overhead Line, and Associated Guy Wires By Avista at Company Expense. Work to be Done Prior to Roadway Improvements
- 3A Adjust Existing Lewiston Sanitary Sewer Manhole By Roadway Contractor at Project Expense
- 4A Replace Existing Lewiston Water Utility Valve By Roadway Contractor at Project Expense
- 4B Replace Existing Lewiston Water Line By Roadway Contractor at Project Expense
- 5A Relocate Existing Avista Gas Valve By Avista at Company Expense. Work to be Done in Coordination with Roadway Improvements
- 5B Relocate Existing Avista Gas Line By Avista at Company Expense. Work to be Done in Coordination with Roadway Improvements
- 6D Adjust Existing CenturyLink Fiber Optic Line by CenturyLink at Company Expense. Work to be Done in Coordination with Roadway Improvements
- 8A Adjust Existing Port of Whitman/Port of Lewiston Fiber Optic Line By Ports at Company Expense. Work to be Done in Coordination with Roadway Improvements

NOTES:

1. Locations of Existing Utilities and Relocations Shown on the Plans are Approximate and Shall be Field Verified in Coordination with Utility Companies.
2. Retain and Protect all Utilities Unless Otherwise Noted.



Cv. No. **3**
 Δ = 37° 38' 18" Lt.
 T = 153.36'
 L = 295.61'
 R = 450.00'
 D = 12° 43' 57"
 P.I. N. 1,733,347.298
 E. 2,309,183.728



REVISIONS			
NO.	DATE	BY	DESCRIPTION

DESIGNED	DJM
DESIGN CHECKED	JLJ
DETAILED	BRB
DRAWING CHECKED	JLJ

SCALES SHOWN ARE FOR 11" X 17" PRINTS ONLY
 CADD FILE NAME 12009_util_003.sht
 DRAWING DATE: January, 2018

IDAHO TRANSPORTATION DEPARTMENT



Parametrix

PROJECT NO. A012(009)

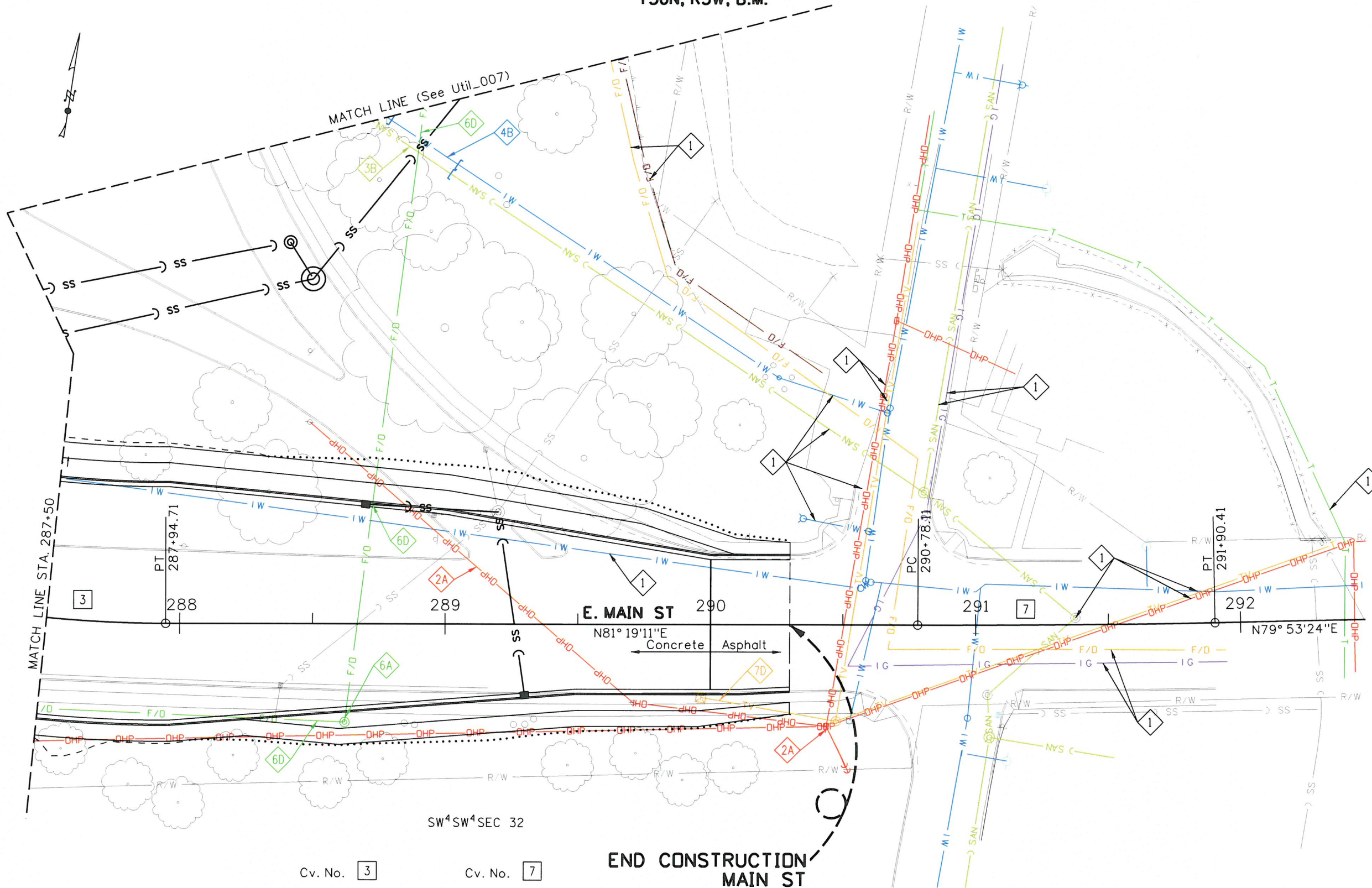
UTILITY PLAN SHEET
US-12, 18TH ST TO CLEARWATER RV BR, LEWISTON
 STA. 283+00 TO STA. 287+50
 STA. 111+00 TO STA. 114+80

English
 COUNTY Nez Perce
 KEY NUMBER 12009
 SHEET 4 OF 11

PROFESSIONAL ENGINEER REGISTERED 11868
 STATE OF IDAHO
 DAVID J. MELDRUM

U:\Bois\Projects\Clients\4006-ITD\314-4006-046 US-12,18th Clearwater\CADD\DDN\Sheets\2009_util_004.sht 1/29/2018 2:02:43 PM

T36N, R5W, B.M.



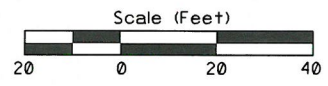
- 1 Retain and Protect
- 2A Relocate Existing Avista Power Pole, Overhead Line, and Associated Guy Wires, By Avista at Company Expense. Work to be Done Prior to Roadway Improvements
- 3B Abandon Existing Lewiston Sanitary Sewer Line By Contractor at Project Expense. Work to be Done in Coordination with Roadway Improvements
- 4B Replace Existing Lewiston Water Line By Roadway Contractor at Project Expense
- 6A Adjust Existing CenturyLink Manhole by CenturyLink at Company Expense. Work to be Done in Coordination with Roadway Improvements
- 6D Adjust Existing CenturyLink Fiber Optic Line by CenturyLink at Company Expense. Work to be Done in Coordination with Roadway Improvements
- 7D Relocate Existing Cable One TV Line by Cable One at Company Expense. Work to be Done Prior to Roadway Improvements

NOTES:

1. Locations of Existing Utilities and Relocations Shown on the Plans are Approximate and Shall be Field Verified in Coordination with Utility Companies.
2. Retain and Protect all Utilities Unless Otherwise Noted.

Cv. No. 3	Cv. No. 7
Δ = 37° 38'18" Lt.	Δ = 1° 25'47" Lt.
T = 153.36'	T = 56.15'
L = 295.61'	L = 112.29'
R = 450.00'	R = 4500.00'
D = 12° 43'57"	D = 1° 16'24"
P.I. N. 1,733,347.298	P.I. N. 1,733,421.689
E. 2,309,183.728	E. 2,309,670.992

END CONSTRUCTION MAIN ST
 STA. 290+30.00
 N. 1,733,405.954
 E. 2,309,567.922



REVISIONS			
NO.	DATE	BY	DESCRIPTION

DESIGNED	DJM	SCALES SHOWN ARE FOR 11" X 17" PRINTS ONLY CADD FILE NAME: 12009_util_004.sht DRAWING DATE: January, 2018
DESIGN CHECKED	JLJ	
DETAILED	BRB	
DRAWING CHECKED	JLJ	

IDAHO TRANSPORTATION DEPARTMENT

Parametrix

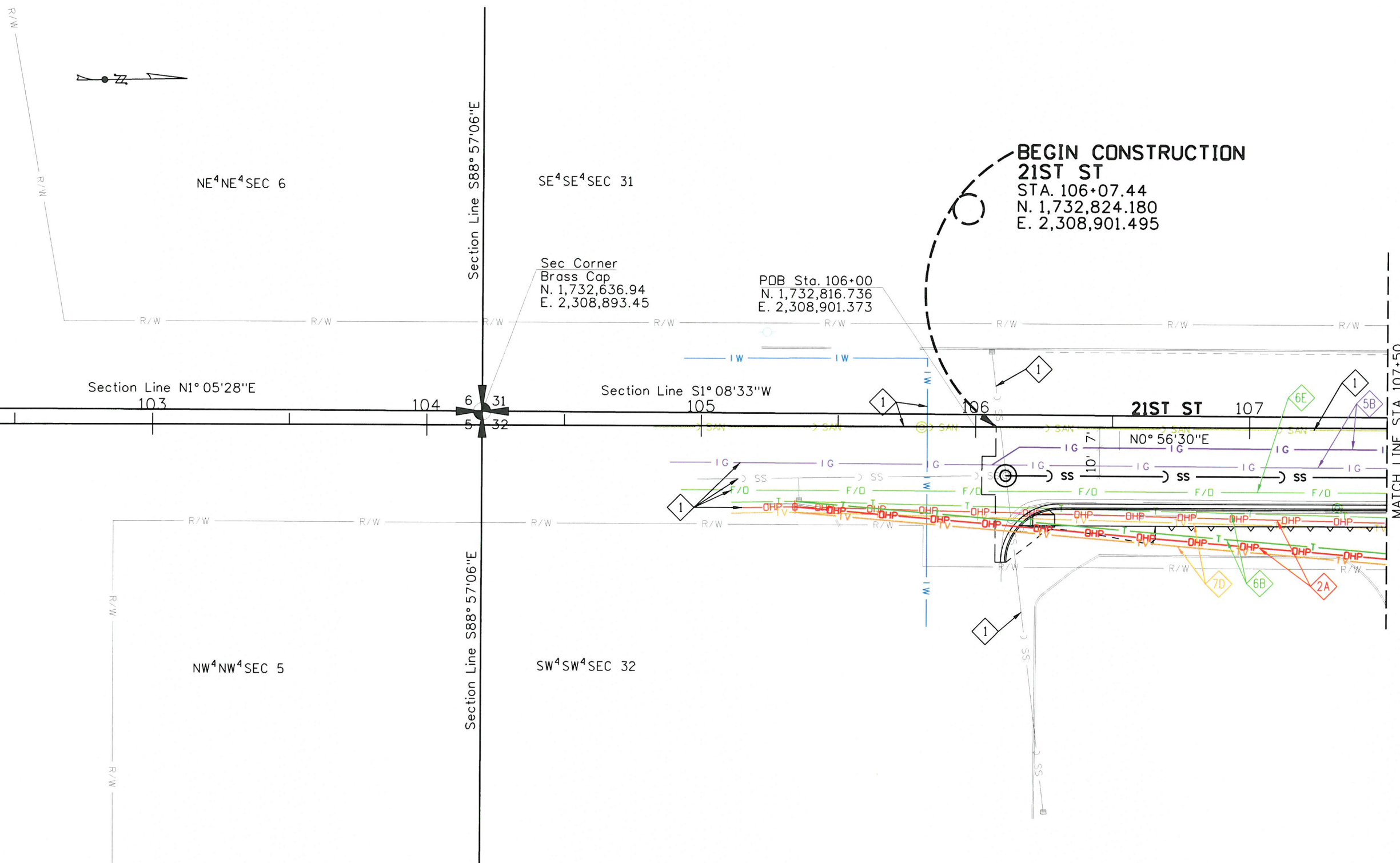
PROJECT NO.	A012(009)
-------------	-----------

UTILITY PLAN SHEET
US-12, 18TH ST TO CLEARWATER
RV BR, LEWISTON
STA. 287+50 TO END

English
COUNTY Nez Perce
KEY NUMBER 12009
SHEET 5 OF 11

T35N, R5W, B.M.

T36N, R5W, B.M.



- 1 Retain and Protect
- 2A Relocate Existing Avista Power Pole, Overhead Line, and Associated Guy Wires By Avista at Company Expense. Work to be Done Prior to Roadway Improvements.
- 5B Relocate Existing Avista Gas Line By Avista at Company Expense.. Work to be Done in Coordination with Roadway Improvements
- 6B Relocate Existing CenturyLink Cable by CenturyLink at Company Expense. Work to be Done Prior to Roadway Improvements
- 6E Adjust Existing CenturyLink Cable by CenturyLink at Company Expense. Work to be Done in Coordination with Roadway Improvements
- 7D Relocate Existing Cable One TV Line by Cable One at Company Expense. Work to be Done Prior to Roadway Improvements

- NOTES:**
- Locations of Existing Utilities and Relocations Shown on the Plans are Approximate and Shall be Field Verified in Coordination with Utility Companies.
 - Retain and Protect all Utilities Unless Otherwise Noted.

U:\Bois\Projects\Clients\4006-ITD\34-4006-046 US-12\18th Clearwater\CADD\GDG\Sheets\12009_util_005.sht
 1/29/2018 2:02:44 PM

REVISIONS			
NO.	DATE	BY	DESCRIPTION

DESIGNED	DJM	SCALES SHOWN ARE FOR 11" X 17" PRINTS ONLY CADD FILE NAME: 12009_util_005.sht DRAWING DATE: January, 2018
DESIGN CHECKED	JLJ	
DETAILED	BRB	
DRAWING CHECKED	JLJ	

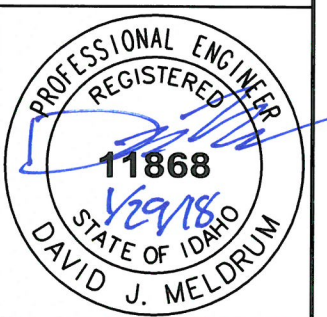
IDAHO TRANSPORTATION DEPARTMENT

Parametrix

PROJECT NO.	A012(009)
-------------	-----------

UTILITY PLAN SHEET	US-12, 18TH ST TO CLEARWATER RV BR, LEWISTON BEGIN TO STA. 107+50
--------------------	---

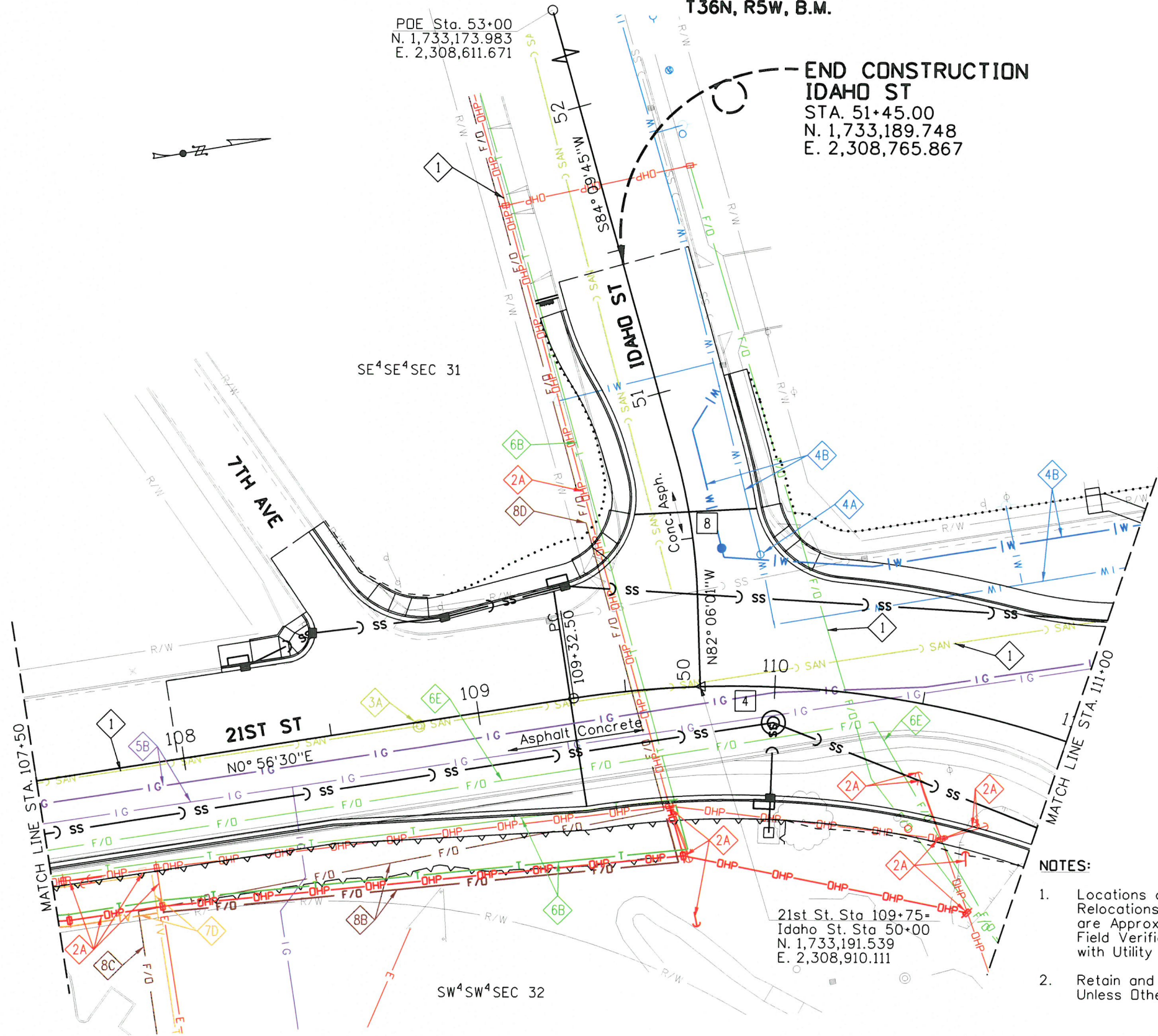
English
COUNTY: Nez Perce
KEY NUMBER: 12009
SHEET: 6 OF 11



PDE Sta. 53+00
N. 1,733,173.983
E. 2,308,611.671

T36N, R5W, B.M.

END CONSTRUCTION
IDAHO ST
STA. 51+45.00
N. 1,733,189.748
E. 2,308,765.867



Cv. No. **4**

Δ = 38° 00' 59" Rt.
 T = 120.57'
 L = 232.23'
 R = 350.00'
 D = 16° 22' 13"
 P.I. N. 1,733,269.741
 E. 2,308,908.819

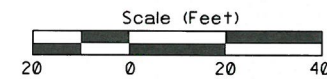
Cv. No. **8**

Δ = 13° 44' 13" Lt.
 T = 24.09'
 L = 47.95'
 R = 200.00'
 D = 28° 38' 52"
 P.I. N. 1,733,198.998
 E. 2,308,856.350

NOTES:

- Locations of Existing Utilities and Relocations Shown on the Plans are Approximate and Shall be Field Verified in Coordination with Utility Companies.
- Retain and Protect all Utilities Unless Otherwise Noted.

- 1 Retain and Protect
- 2A Relocate Existing Avista Power Pole, Overhead Line, and Associated Guy Wires By Avista at Company Expense. Work to be Done Prior to Roadway Improvements
- 3A Adjust Existing Lewiston Sanitary Sewer Manhole By Roadway Contractor at Project Expense
- 4A Replace Existing Lewiston Water Utility Valve By Roadway Contractor at Project Expense
- 4B Replace Existing Lewiston Water Line By Roadway Contractor at Project Expense
- 5B Relocate Existing Avista Gas Line By Avista at Company Expense. Work to be Done in Coordination with Roadway Improvements
- 6B Relocate Existing CenturyLink Cable by CenturyLink at Company Expense. Work to be Done Prior to Roadway Improvements
- 6E Adjust Existing CenturyLink Cable by CenturyLink at Company Expense. Work to be Done in Coordination with Roadway Improvements
- 7D Relocate Existing Cable One TV Line by Cable One at Company Expense. Work to be Done Prior to Roadway Improvements
- 8B Relocate Existing Port of Whitman/Port of Lewiston Fiber Optic Line By Ports at Company Expense. Work to be Done Prior to Roadway Improvements
- 8C Relocate Existing Port of Whitman/Port of Lewiston Box or Vault By Ports at Company Expense. Work to be Done Prior to Roadway Improvements
- 8D Adjust Existing Port of Whitman/Port of Lewiston Fiber Optic Line By Ports at Company Expense. Work to be Done Prior to Roadway Improvements



REVISIONS

NO.	DATE	BY	DESCRIPTION

DESIGNED	DJM
DESIGN CHECKED	JLJ
DETAILED	BRB
DRAWING CHECKED	JLJ

SCALES SHOWN ARE FOR 11" X 17" PRINTS ONLY

CADD FILE NAME
12009_util_006.sht

DRAWING DATE:
January, 2018

IDAHO TRANSPORTATION DEPARTMENT

Parametrix

PROJECT NO.
A012(009)

UTILITY PLAN SHEET

US-12, 18TH ST TO CLEARWATER
RV BR, LEWISTON
STA. 107+50 TO STA. 111+00

English

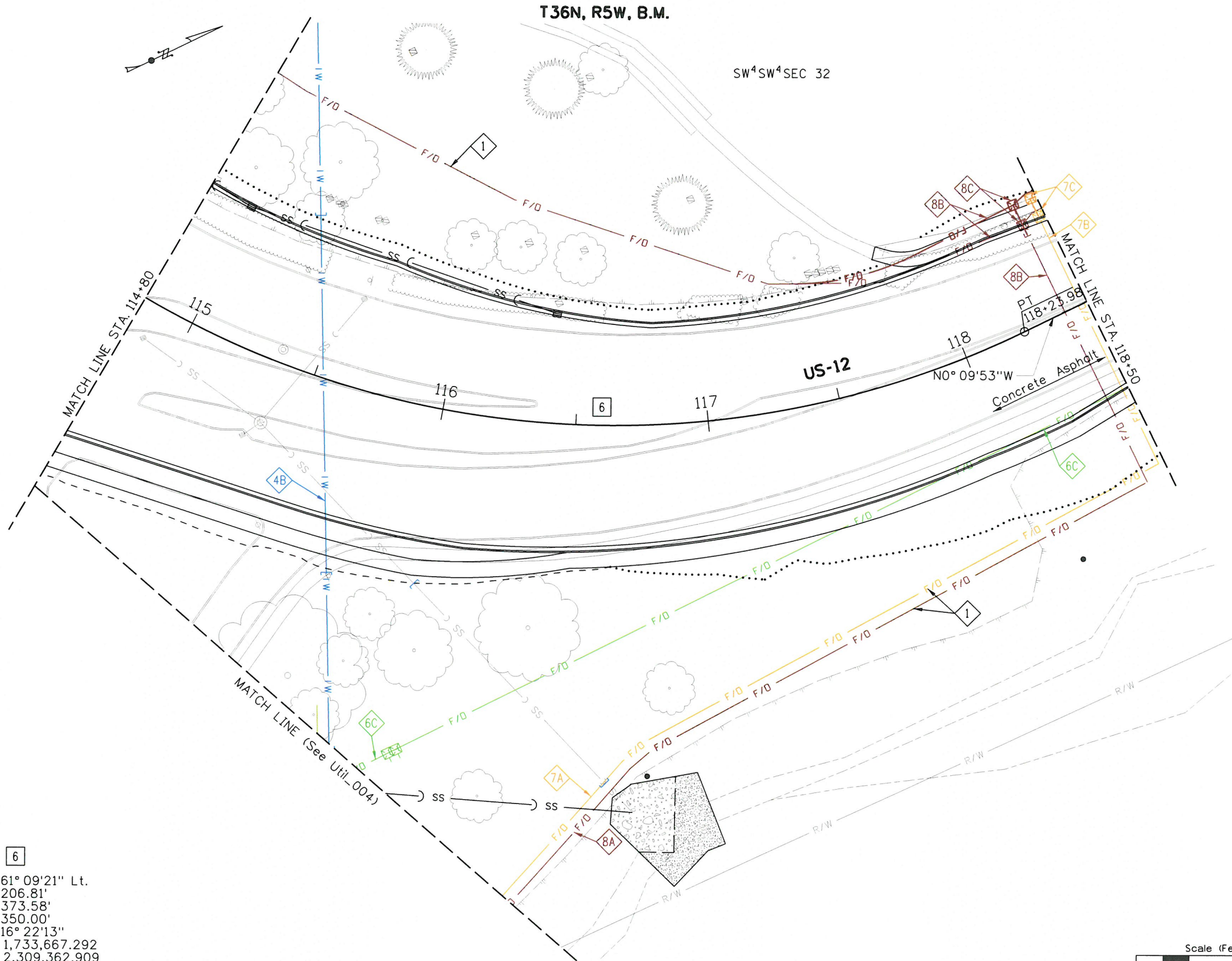
COUNTY Nez Perce

KEY NUMBER 12009

SHEET 7 OF 11

PROFESSIONAL ENGINEER
REGISTERED
11868
STATE OF IDAHO
DAVID J. MELDRUM

U:\Bois\Projects\Clients\4006-ITD\314-4006-046 US-12\18th Clearwater\CADD\DWG\Sheets\2009_util_007.sht 1/29/2018 8:53:44 AM



Cv. No. 6

Δ = 61° 09' 21" Lt.
 T = 206.81'
 L = 373.58'
 R = 350.00'
 D = 16° 22' 13"
 P.I. N. 1,733,667.292
 E. 2,309,362.909



- 1 Retain and Protect
- 4B Replace Existing Lewiston Water Line By Roadway Contractor at Project Expense
- 6C Adjust Existing CenturyLink Fiber Optic Line by CenturyLink at Company Expense. Work to be Done Prior to Roadway Improvements
- 7A Adjust Existing Cable One Fiber Optic Line by Cable One at Company Expense. Work to be Done in Coordination with Roadway Improvements
- 7B Relocate Existing Cable One Fiber Optic Line by Cable One at Company Expense. Work to be Done Prior to Roadway Improvements.
- 7C Relocate Existing Cable One Box/Vault by Cable One at Company Expense. Work to be Done Prior to Roadway Improvements
- 8A Adjust Existing Port of Whitman/Port of Lewiston Fiber Optic Line By Ports at Company Expense. Work to be Done in Coordination with Roadway Improvements
- 8B Relocate Existing Port of Whitman/Port of Lewiston Fiber Optic Line By Ports at Company Expense. Work to be Done Prior to Roadway Improvements
- 8C Relocate Existing Port of Whitman/Port of Lewiston Box or Vault By Ports at Company Expense. Work to be Done Prior to Roadway Improvements

- NOTES:**
1. Locations of Existing Utilities and Relocations Shown on the Plans are Approximate and Shall be Field Verified in Coordination with Utility Companies.
 2. Retain and Protect all Utilities Unless Otherwise Noted.

REVISIONS		
NO.	DATE	BY DESCRIPTION

DESIGNED	DJM
DESIGN CHECKED	JLJ
DETAILED	BRB
DRAWING CHECKED	JLJ

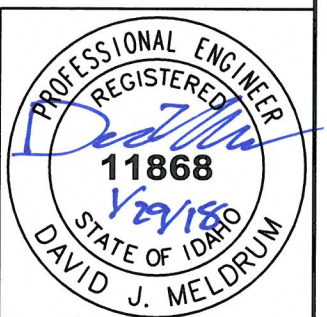
IDAHO TRANSPORTATION DEPARTMENT

Parametrix

PROJECT NO.	A012(009)
-------------	-----------

UTILITY PLAN SHEET
US-12, 18TH ST TO CLEARWATER RV BR, LEWISTON
STA. 114+80 TO STA. 118+50

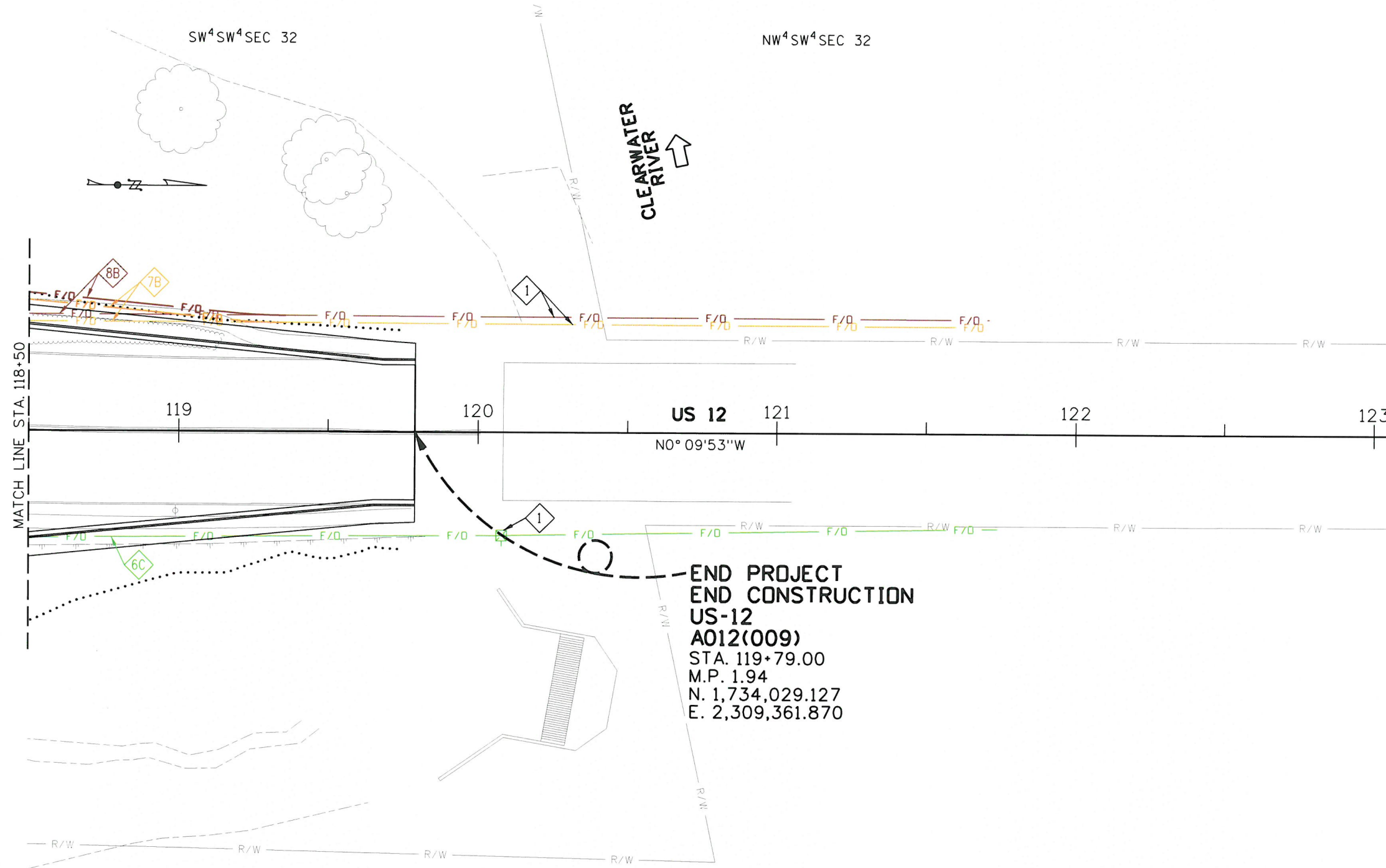
English
COUNTY Nez Perce
KEY NUMBER 12009
SHEET 8 OF 11



1/29/2018 8:53:46 AM

U:\Bols\Projects\Clients\4006-ITD\314-4006-046 US-12\18th Clearwater\995svcs\CADD\GN\Sheets\12009_util_008.sht

T36N, R5W, B.M.



END PROJECT
END CONSTRUCTION
US-12
A012(009)
STA. 119+79.00
M.P. 1.94
N. 1,734,029.127
E. 2,309,361.870

- 1 Retain and Protect
- 6C Adjust Existing CenturyLink Fiber Optic Line by CenturyLink at Company Expense. Work to be Done Prior to Roadway Improvements
- 7B Relocate Existing Cable One Fiber Optic Line by Cable One at Company Expense. Work to be Done Prior to Roadway Improvements
- 8B Relocate Existing Port of Whitman/Port of Lewiston Fiber Optic Line By Ports at Company Expense. Work to be Done Prior to Roadway Improvements

NOTES:

1. Locations of Existing Utilities and Relocations Shown on the Plans are Approximate and Shall be Field Verified in Coordination with Utility Companies.
2. Retain and Protect all Utilities Unless Otherwise Noted.



REVISIONS			DESIGNED	SCALES SHOWN
NO.	DATE	BY	DESCRIPTION	ARE FOR 11" X 17" PRINTS ONLY

IDAHO TRANSPORTATION DEPARTMENT



Parametrix

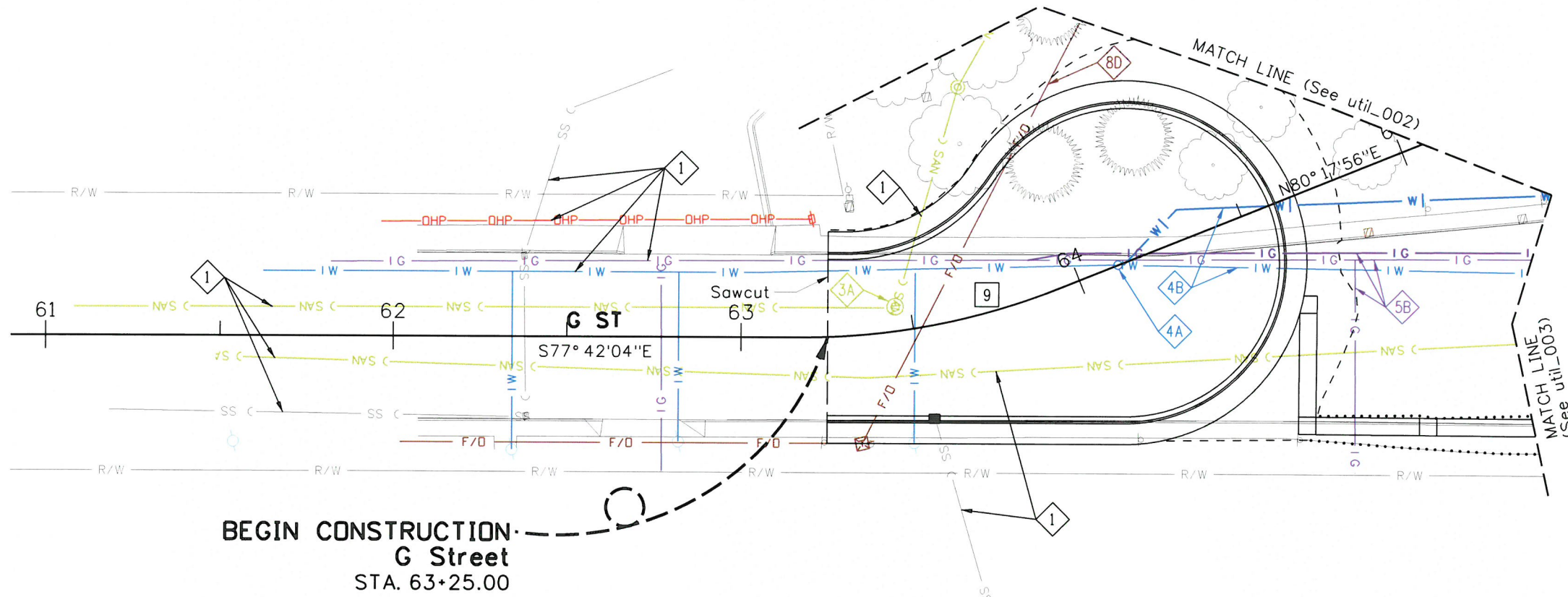
PROJECT NO.	UTILITY PLAN SHEET
A012(009)	US-12, 18TH ST TO CLEARWATER RV BR, LEWISTON STA. 118+50 TO END

English
COUNTY Nez Perce
KEY NUMBER 12009
SHEET 9 OF 11



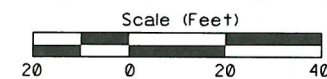
T36N, R5W, B.M.

SE⁴SE⁴SEC 31



BEGIN CONSTRUCTION
G Street
STA. 63+25.00

Cv. No. 9
 Δ = 22° 00' 01" Lt.
 T = 38.88'
 L = 76.80'
 R = 200.00'
 D = 28° 38' 52"
 P.I. N. 1,733,446.979
 E. 2,308,655.619



- 1 Retain and Protect
- 3A Adjust Existing Lewiston Sanitary Sewer Manhole By Roadway Contractor at Project Expense
- 4A Replace Existing Lewiston Water Utility Valve By Roadway Contractor at Project Expense
- 4B Replace Existing Lewiston Water Line By Roadway Contractor at Project Expense
- 5B Relocate Existing Avista Gas Line By Avista at Company Expense. Work to be Done in Coordination with Roadway Improvements
- 8D Adjust Existing Port of Whitman/Port of Lewiston Fiber Optic Line By Ports at Company Expense. Work to be Done Prior to Roadway Improvements

- NOTES:**
1. Locations of Existing Utilities and Relocations Shown on the Plans are Approximate and Shall be Field Verified in Coordination with Utility Companies.
 2. Retain and Protect all Utilities Unless Otherwise Noted.

1/29/2018 8:53:48 AM
 U:\basis\projects\clients\14006-14\314-4006-046 us-12,18th clearwater\99\svcs\cadd\12009_util_009.sht

REVISIONS			
NO.	DATE	BY	DESCRIPTION

DESIGNED	DJM
DESIGN CHECKED	JLJ
DETAILED	BRB
DRAWING CHECKED	JLJ

IDAHO
TRANSPORTATION
DEPARTMENT

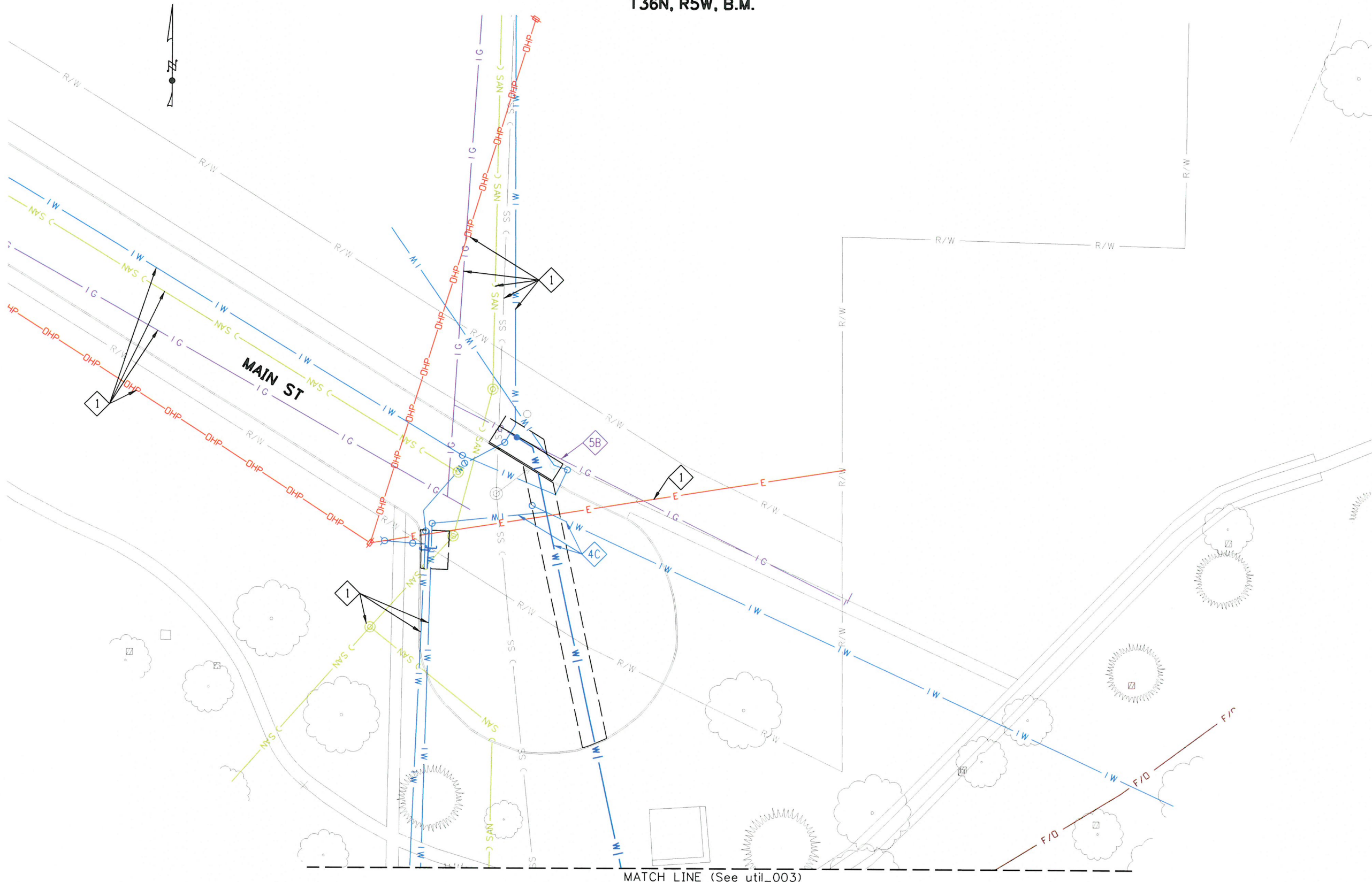
Parametrix

PROJECT NO.	A012(009)
-------------	-----------

UTILITY PLAN SHEET	English
COUNTY	Nez Perce
KEY NUMBER	12009
SHEET	10 OF 11

PROFESSIONAL ENGINEER
REGISTERED
11868
 COUNTY Nez Perce
 KEY NUMBER 12009
 STATE OF IDAHO
DAVID J. MELDRUM

T36N, R5W, B.M.



- 1 Retain and Protect
- 4C Adjust Existing Lewiston Water Line By Roadway Contractor at Project Expense
- 5B Relocate Existing Avista Gas Line By Avista at Company Expense. Work to be Done in Coordination with Roadway Improvements

NOTES:

1. Locations of Existing Utilities and Relocations Shown on the Plans are Approximate and Shall be Field Verified in Coordination with Utility Companies.
2. Retain and Protect all Utilities Unless Otherwise Noted.

U:\Bois\Projects\Clients\4006-ITD\314-4006-046 US-12,18th Clearwater\CADD\GN\Sheets\2009_util_010.sht
 1/29/2018 8:53:50 AM

REVISIONS			
NO.	DATE	BY	DESCRIPTION

DESIGNED	DJM
DESIGN CHECKED	JLJ
DETAILED	BRB
DRAWING CHECKED	JLJ

SCALES SHOWN ARE FOR 11" X 17" PRINTS ONLY
 CADD FILE NAME: 12009_util_010.sht
 DRAWING DATE: January, 2018


IDAHO TRANSPORTATION DEPARTMENT

Parametrix

PROJECT NO.
 A012(009)

UTILITY PLAN SHEET
US-12, 18TH ST TO CLEARWATER
RV BR, LEWISTON
 MAIN ST

English
 COUNTY Nez Perce
 KEY NUMBER 12009
 SHEET 11 OF 11

PROFESSIONAL ENGINEER
 REGISTERED

11868
 1/29/18
 STATE OF IDAHO
DAVID J. MELDRUM