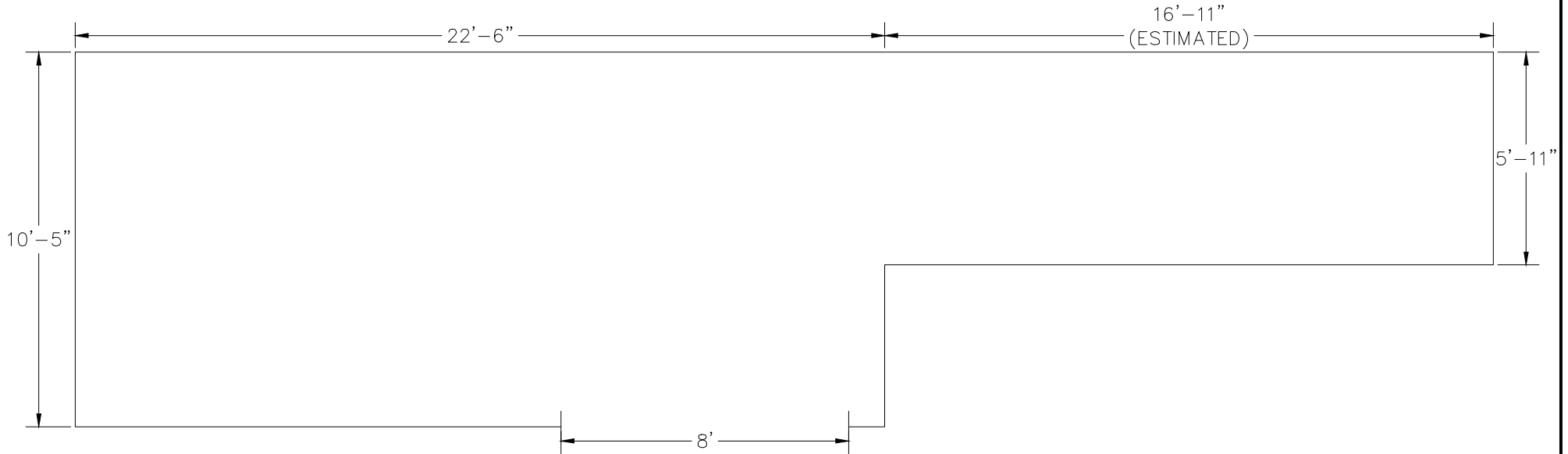
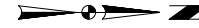


826 MAIN ST-SKELTON VAULTS
 NEW 6TH ST VAULT "AA"

NEW 6TH ST
 STREET SIDE



*DIMENSIONS TAKEN ON SITE ARE APPROXIMATE

LEWISTON DOWNTOWN VAULT INVENTORY
 LEWISTON, IDAHO

VAULT SCHEMATIC



tdhengineering.com
 GREAT FALLS-BOZEMAN-KALISPELL-SHELBY MONTANA
 SPOKANE WASHINGTON
 LEWISTON IDAHO
 WATFORD CITY NORTH DAKOTA

DRAWN BY:	DLR
DESIGNED BY:	
QUALITY CHECK:	JLB
DATE:	08/18/16
JOB NO.	L16-028
CAD NO.	VAULT DRAWING