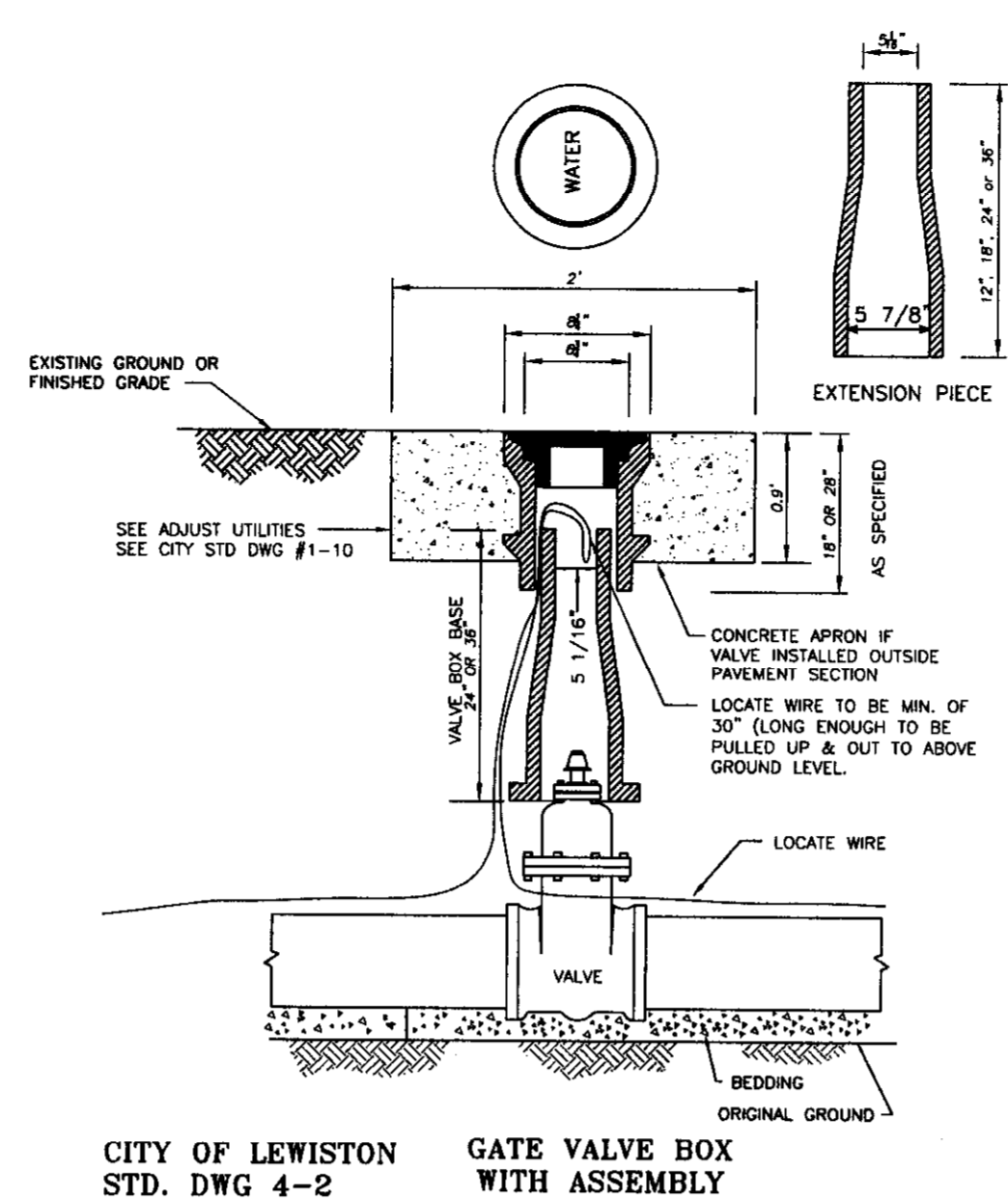


**NOTES:**

- CORPORATION STOP, GATE VALVE, AND CONNECTING PIPING SHALL BE THE SAME DIAMETER AS THE AIR VALVE INLET.
- USE APPROVED JOINTING COMPOUND ON ALL THREADED CONNECTIONS.
- ROTATE AIR VALVE TO PROVIDE MAXIMUM CLEARANCE FOR ACCESS TO GATE VALVE.
- AIR VALVE DETAILS SHOWN ON THE PLANS TAKE PRECEDENCE OVER THIS STANDARD DETAIL.

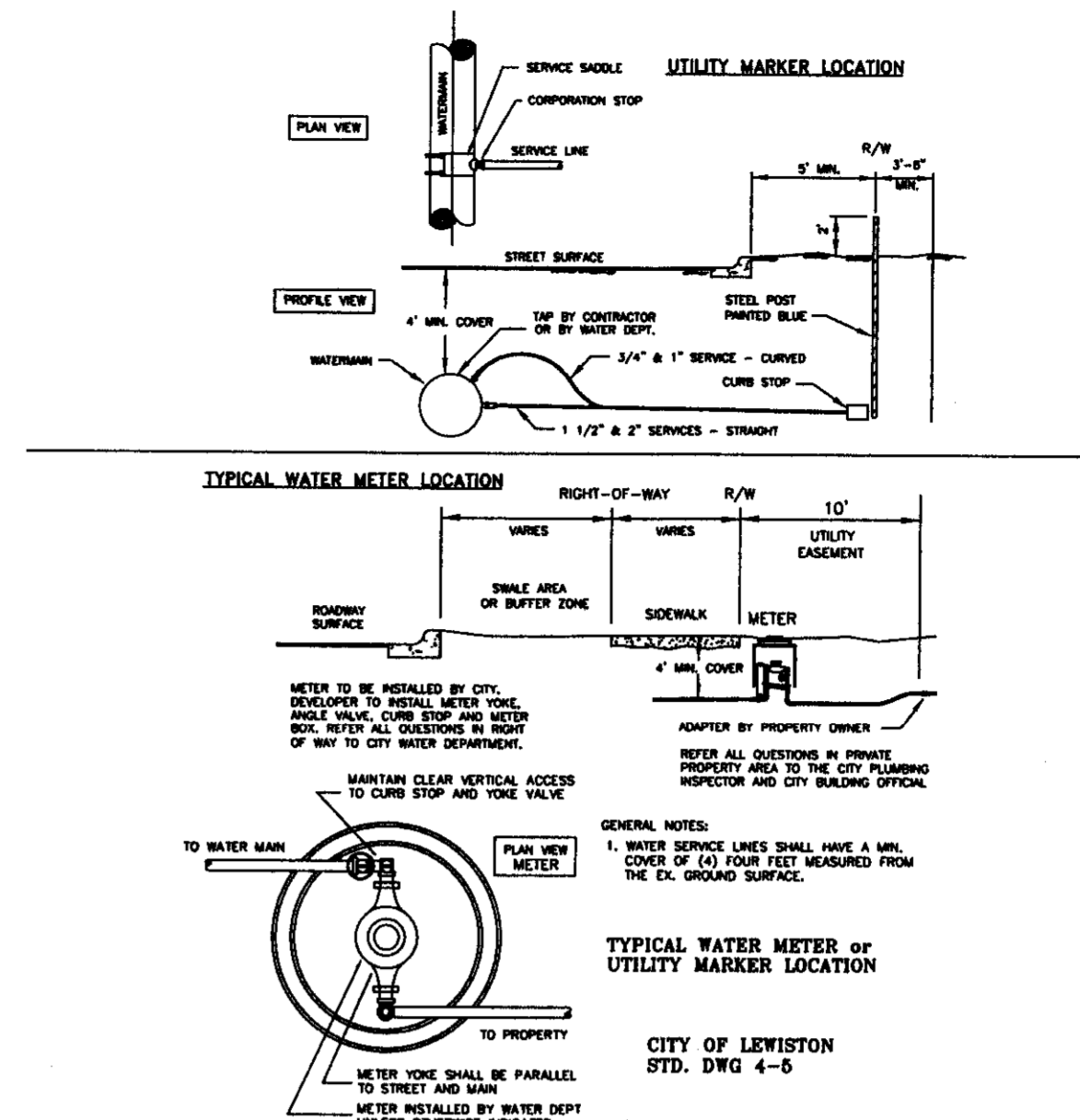
**COMBINATION AIR VALVE**

NOT TO SCALE



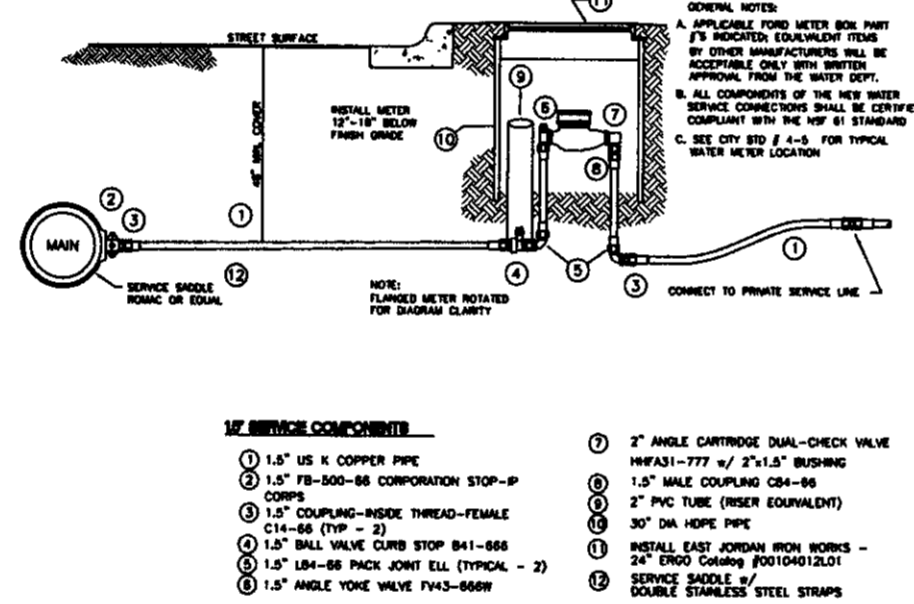
**GATE VALVE INSTALLATION**

NOT TO SCALE



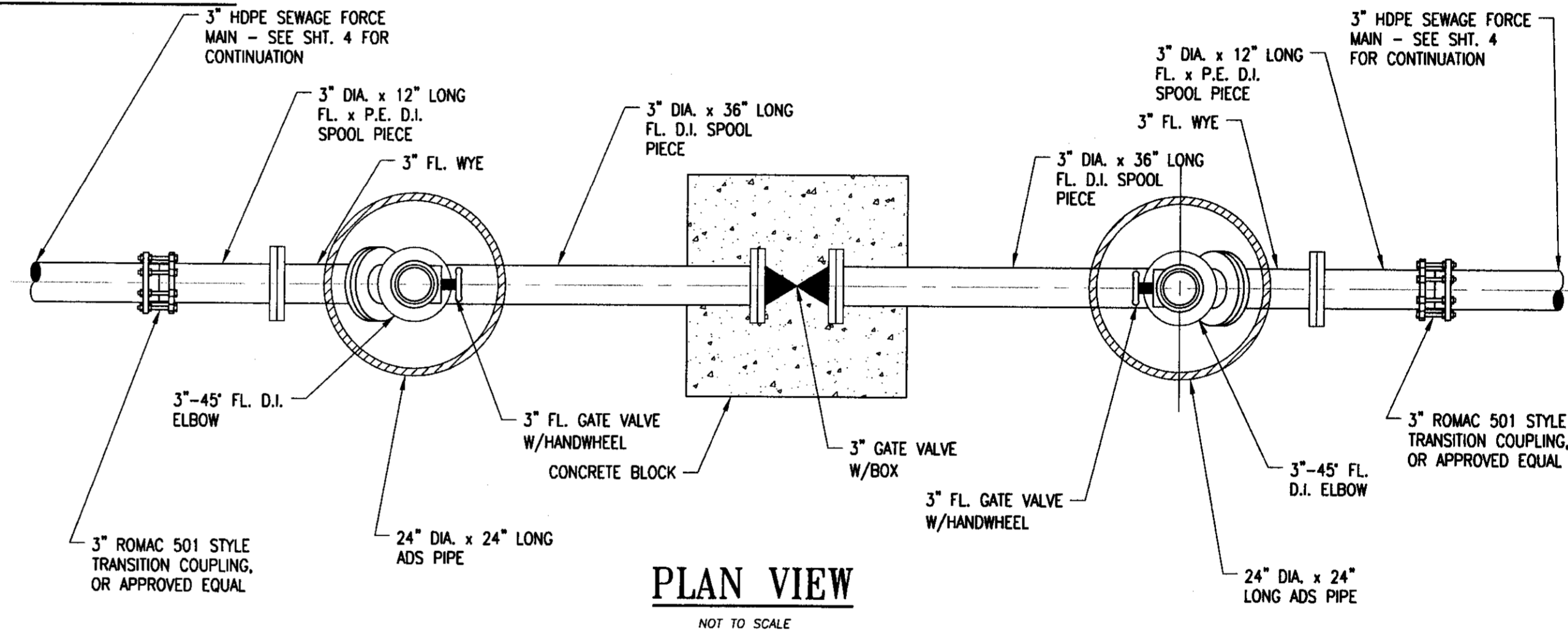
**DETAIL FOR NEW 1 1/2" CONNECTION TO WATER MAIN**

NOT TO SCALE



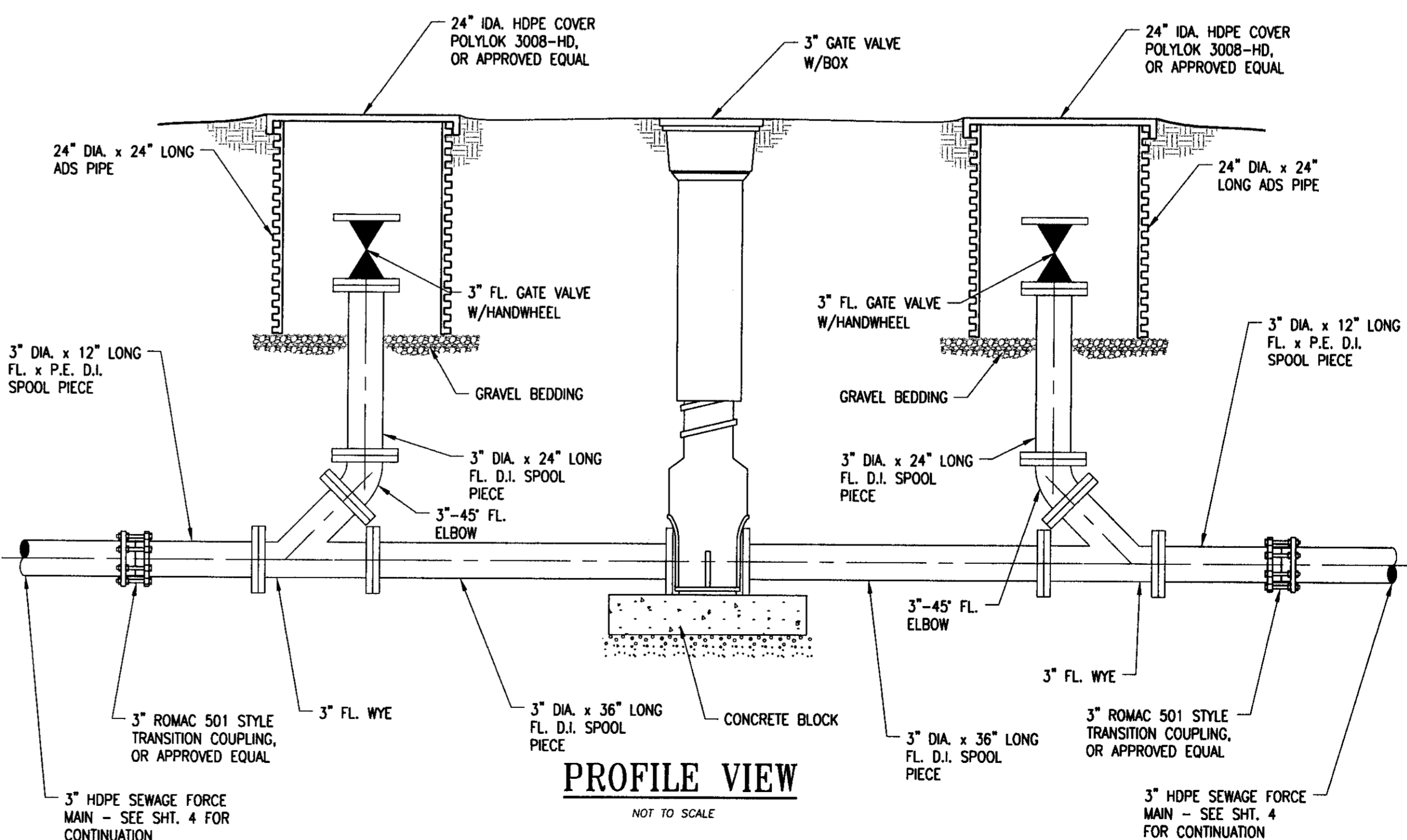
**DETAIL FOR NEW 1 1/2" SERVICE CONNECTION TO WATER MAIN**

NOT TO SCALE



**PLAN VIEW**

NOT TO SCALE

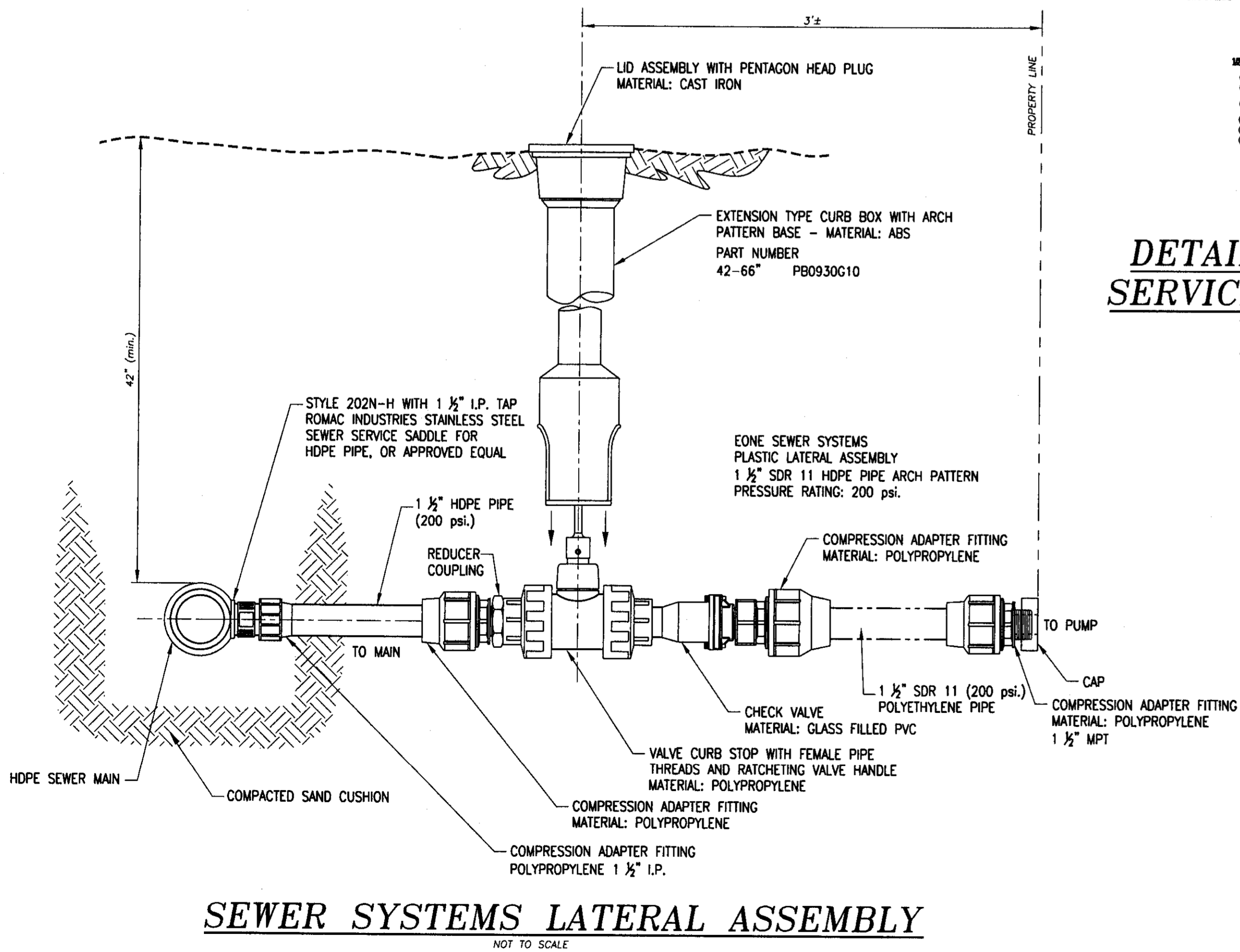


**PROFILE VIEW**

NOT TO SCALE

**TYPICAL FLUSHING STATION**

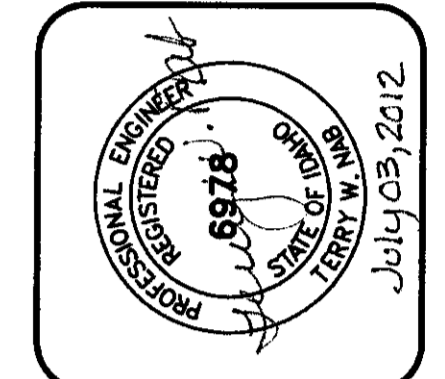
NOT TO SCALE



**SEWER SYSTEMS LATERAL ASSEMBLY**

NOT TO SCALE

REVISIONS	
NO.	DATE



**PROGRESSIVE ENGINEERING GROUP, INC**  
 DESIGN + CONSTRUCTION MANAGEMENT  
 1208 IDAHO STREET, LEWISTON, IDAHO 83501  
 PH (208) 746-6406 FAX (208) 746-8708

**D 2 J, INC.**  
 SOUTHPORT WATER MAIN EXTENSION  
 AIRPOINTE BUSINESS PARK  
 DETAILS  
 LEWISTON, IDAHO 83501

DRAWN BY: JAY	CHECKED BY: TWN
DESIGNED BY: TWN	
DATE: 06/21/12	
LAST REV:	
PROJECT NO.: 08-005	
SHEET 16 OF 17	