

LIFT STATION, SEE THIS SHEET FOR ENLARGED LIFT STATION VIEW  
 SANITARY SEWER STA: 20+62.42 = BASELINE A STA: 20+63.21, 465.00' RT.

PIPE LENGTH = 35.00 LF.  
 8" SS PIPE  
 SLOPE = 0.50%  
 A1  
 19

JOINT TRENCH WITH POWER AND PRESSURE SEWER, NOMINAL 1' HOR. CLEARANCE

INSTALL 2060 LF 4" DR17 C906 PRESSURE SEWER

CONNECT TO EXISTING MANHOLE, STA 13+57.54, 1694' RT

**-AS CONSTRUCTED-**

77 Southway, Suite C  
 Lewiston, Id. 83501  
 Phone: (208) 743-3818  
 Fax: (208) 743-3819

**RIEDEL**  
 Engineering

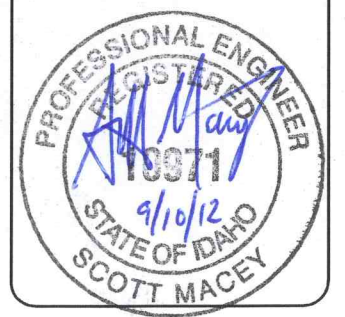
THIS DOCUMENT, AND THE IDEAS AND DESIGNS INCORPORATED HEREIN, AS AN INSTRUMENT OF PROFESSIONAL SERVICES, IS THE PROPERTY OF RIEDEL ENGINEERING, INC. AND IS NOT TO BE USED, IN WHOLE OR IN PART, FOR ANY OTHER PROJECT, OR THE EXTENSION OF THIS PROJECT WITHOUT THE WRITTEN AUTHORIZATION OF RIEDEL ENGINEERING, INC.

LEWISTON - NEZ PERCE COUNTY  
 SOUTHSIDE INDUSTRIAL AIR PARK  
 EDA GRANT # 07-01-06054

LIFT STATION - PLAN VIEW

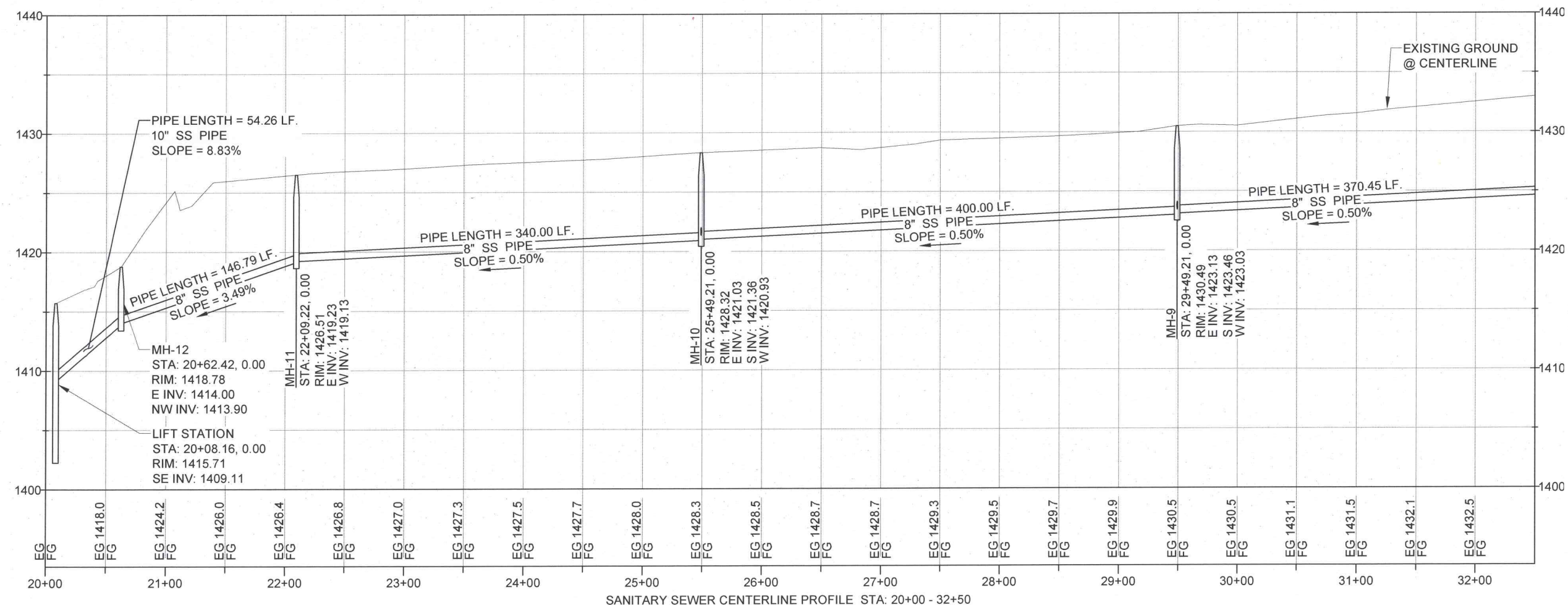
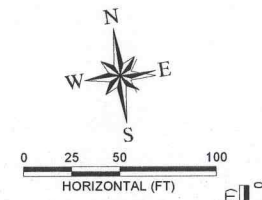
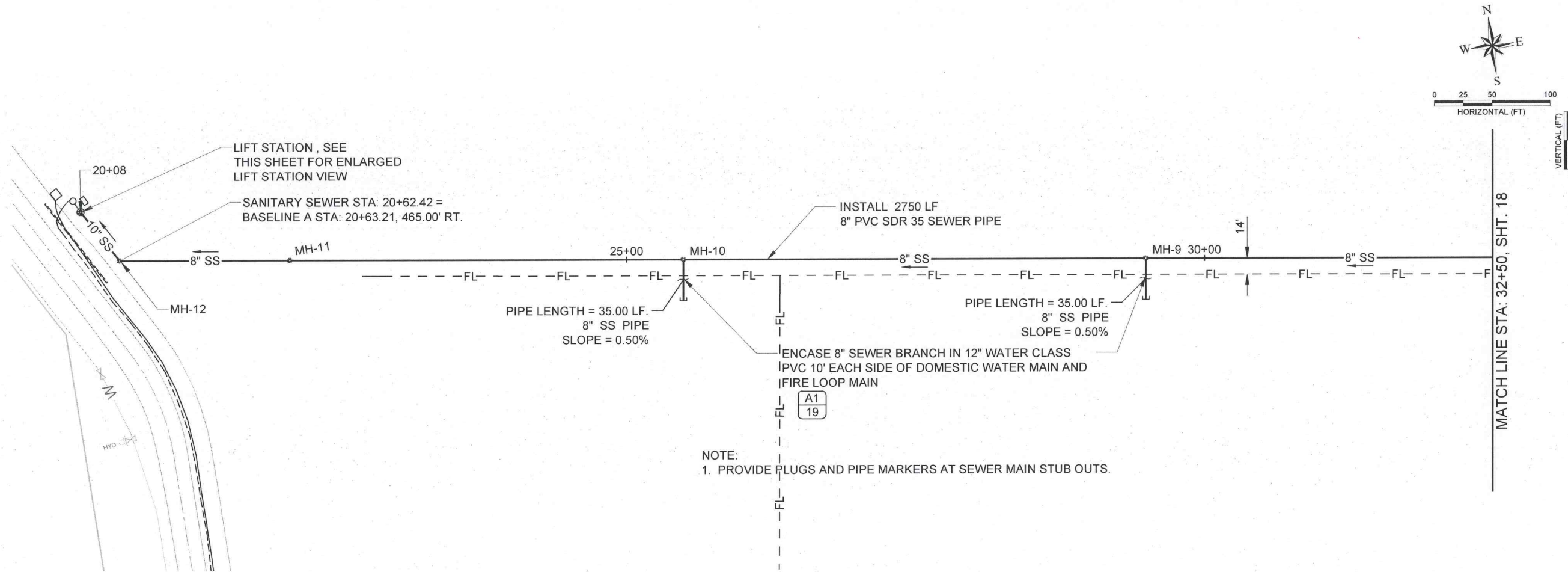
REVISIONS	
NO.	DESCRIPTION
1	WATER MAINS MODIFIED
2	ASBUILT LIFT STATION LOCATION

DESIGNED	TSM
DESIGN CHECKED	JRW, MKA
DETAILED	TSM
DRAWING CHECKED	JRW, MKA
FILE NAME	1057-SMUTL.DWG
DRAWING DATE	9/11/12
DRAWING SCALE	AS SHOWN
SHEET	18 OF 27



E:\PROJECTS\1057 SOUTHIDE INDUS. AIRPARK\CADD\CIVIL 3D\DRAWINGS\1057-SMUTL.DWG

E:\PROJECTS\1057\_SOUTHSIDE INDUS. AIRPARK\CADD\CIVIL 3D\DRAWINGS\1057-SMUTL.DWG

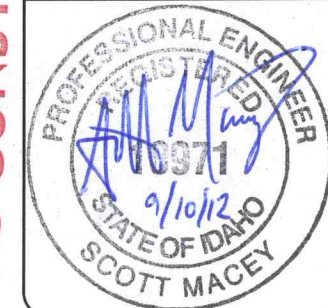


-AS CONSTRUCTED-

LEWISTON - NEZ PERCE COUNTY  
SOUTHSIDE INDUSTRIAL AIR PARK  
EDA GRANT # 07-01-06054

REVISIONS	
NO.	DESCRIPTION
1	WATER MAINS MODIFIED

DESIGNED	DESIGN CHECKED	DATE	BY	SM
TSM	JRW, MKA	11/20/10		
DRAWING CHECKED	FILE NAME	DRAWING DATE	DRAWING SCALE	AS SHOWN
JRW, MKA	1057-SMUTL.dwg	9/11/12		

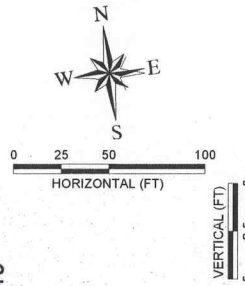
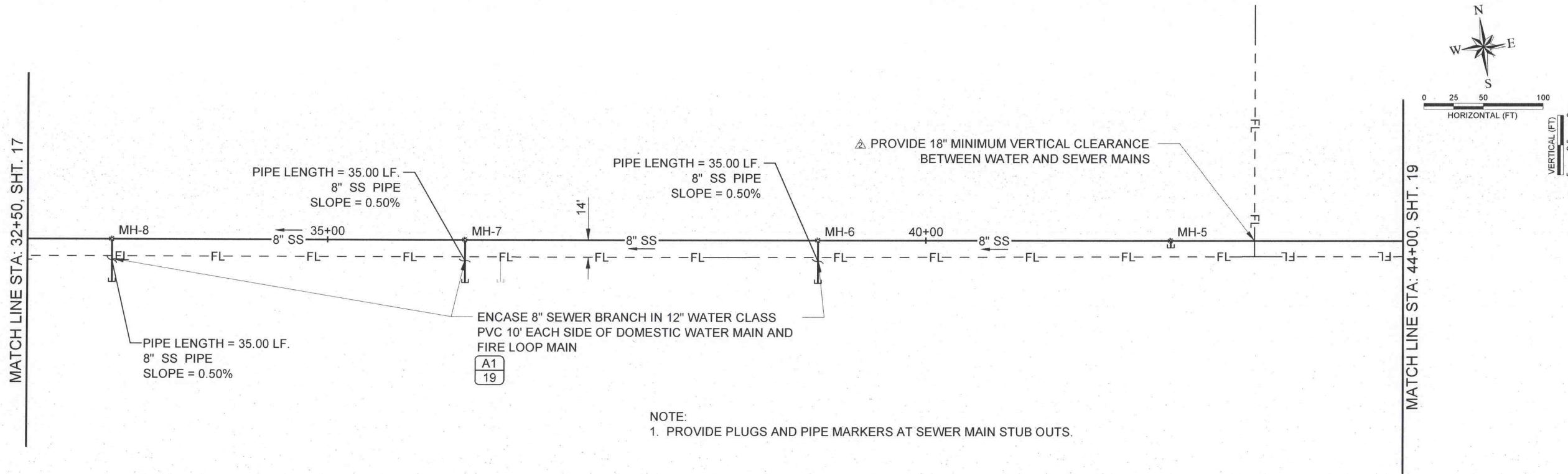


77 Southway, Suite C  
Lewiston, Id. 83501  
Phone: (208) 743-3818  
Fax: (208) 743-3819

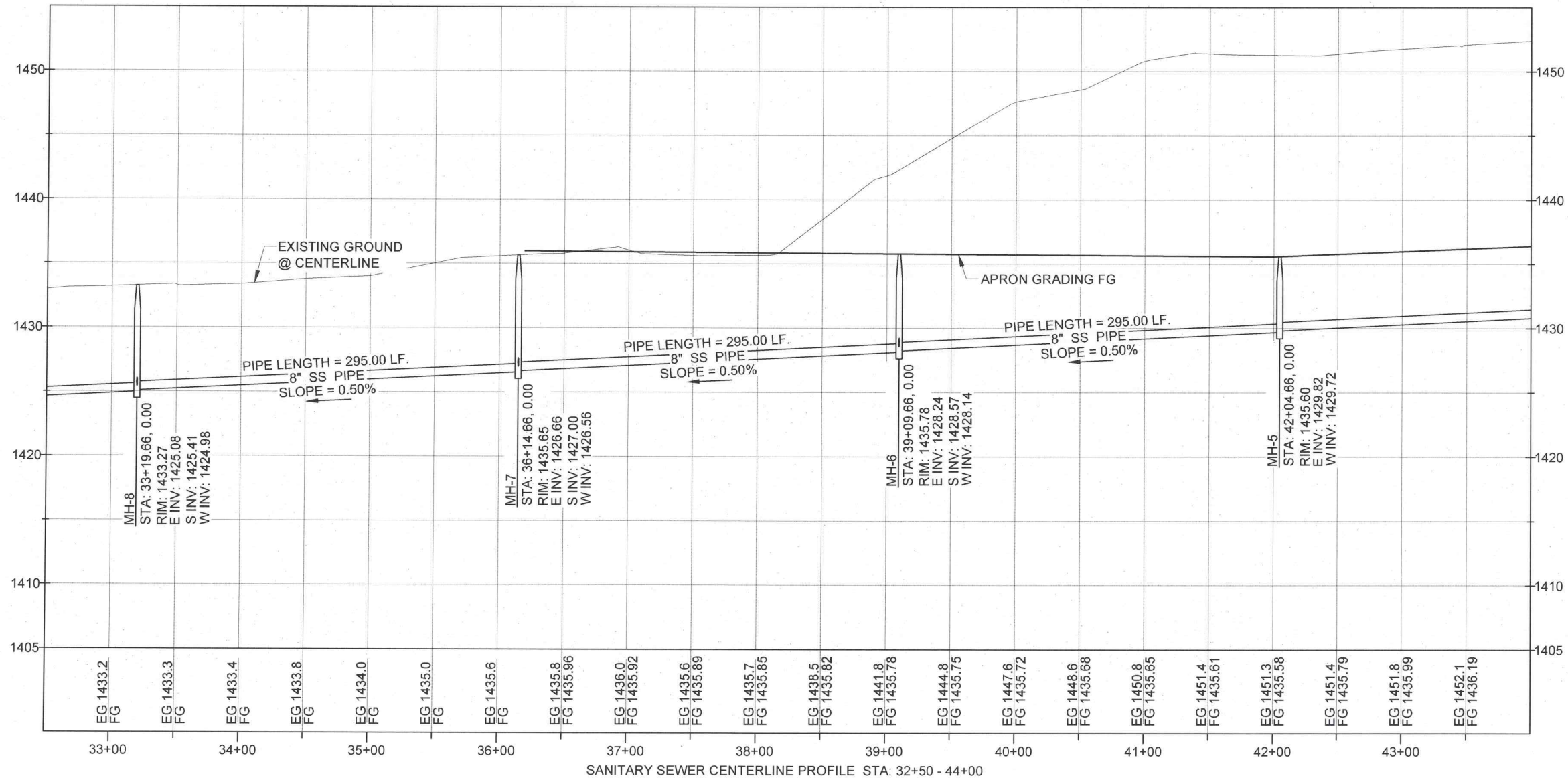
**RIEDEL**  
Engineering



THIS DOCUMENT, AND THE IDEAS AND DESIGNS INCORPORATED HEREIN, AS AN INSTRUMENT OF PROFESSIONAL SERVICES, IS THE PROPERTY OF RIEDEL ENGINEERING, INC. AND IS NOT TO BE USED, IN WHOLE OR IN PART, FOR ANY OTHER PROJECT, OR THE EXTENSION OF THIS PROJECT WITHOUT THE WRITTEN AUTHORIZATION OF RIEDEL ENGINEERING, INC.



NOTE:  
1. PROVIDE PLUGS AND PIPE MARKERS AT SEWER MAIN STUB OUTS.



-AS CONSTRUCTED-

77 Southway, Suite C  
Lewiston, Id. 83501  
Phone: (208) 743-3818  
Fax: (208) 743-3819

THIS DOCUMENT, AND THE IDEAS AND DESIGNS INCORPORATED HEREIN, AS AN INSTRUMENT OF PROFESSIONAL SERVICES, IS THE PROPERTY OF RIEDEL ENGINEERING, INC. AND IS NOT TO BE USED, IN WHOLE OR IN PART, FOR ANY OTHER PROJECT, OR THE EXTENSION OF THIS PROJECT WITHOUT THE WRITTEN AUTHORIZATION OF RIEDEL ENGINEERING, INC.

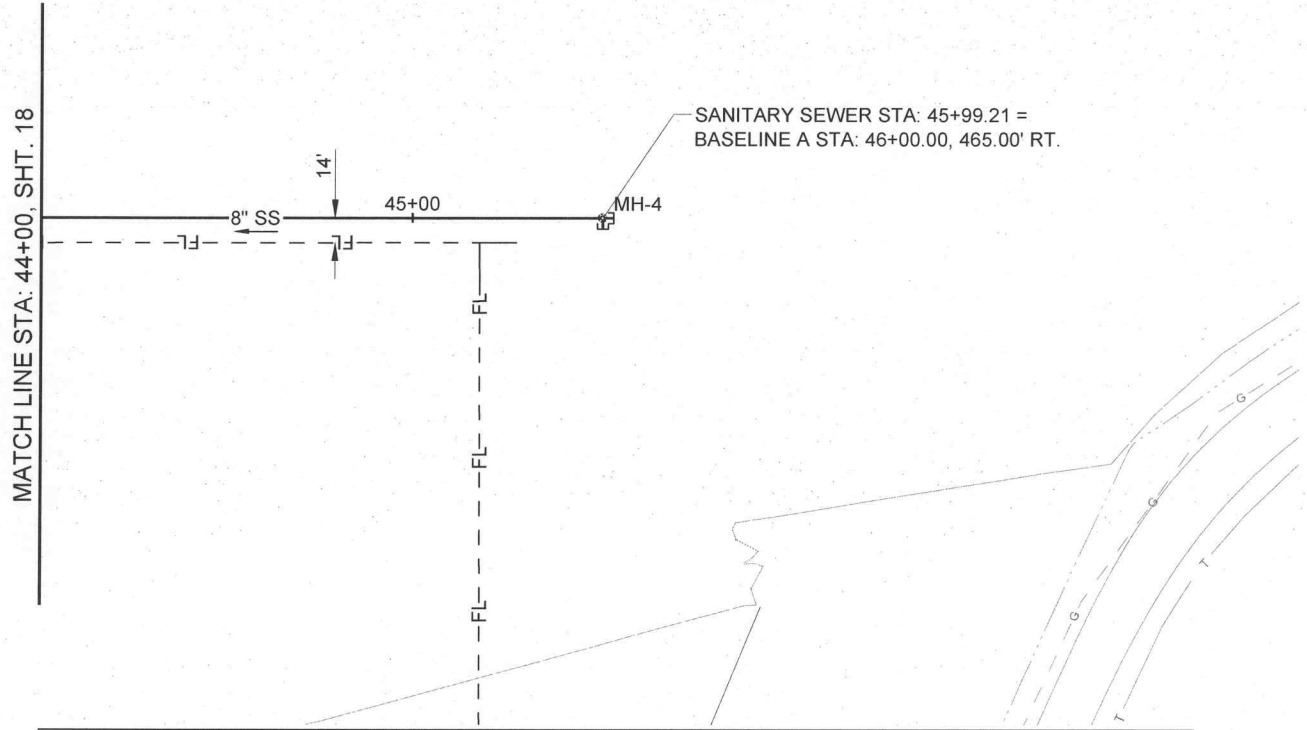
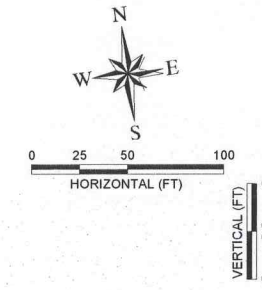
LEWISTON - NEZ PERCE COUNTY  
SOUTH SIDE INDUSTRIAL AIR PARK  
EDA GRANT # 07-01-06054

SANITARY SEWER - STA. 32+50.00-44+00.00

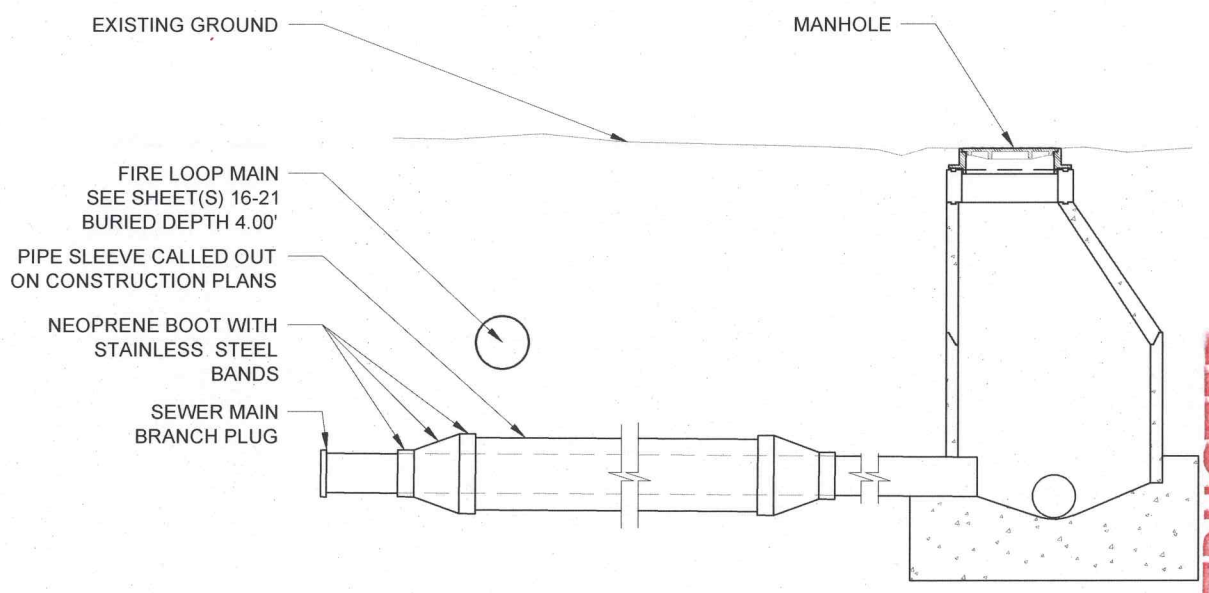
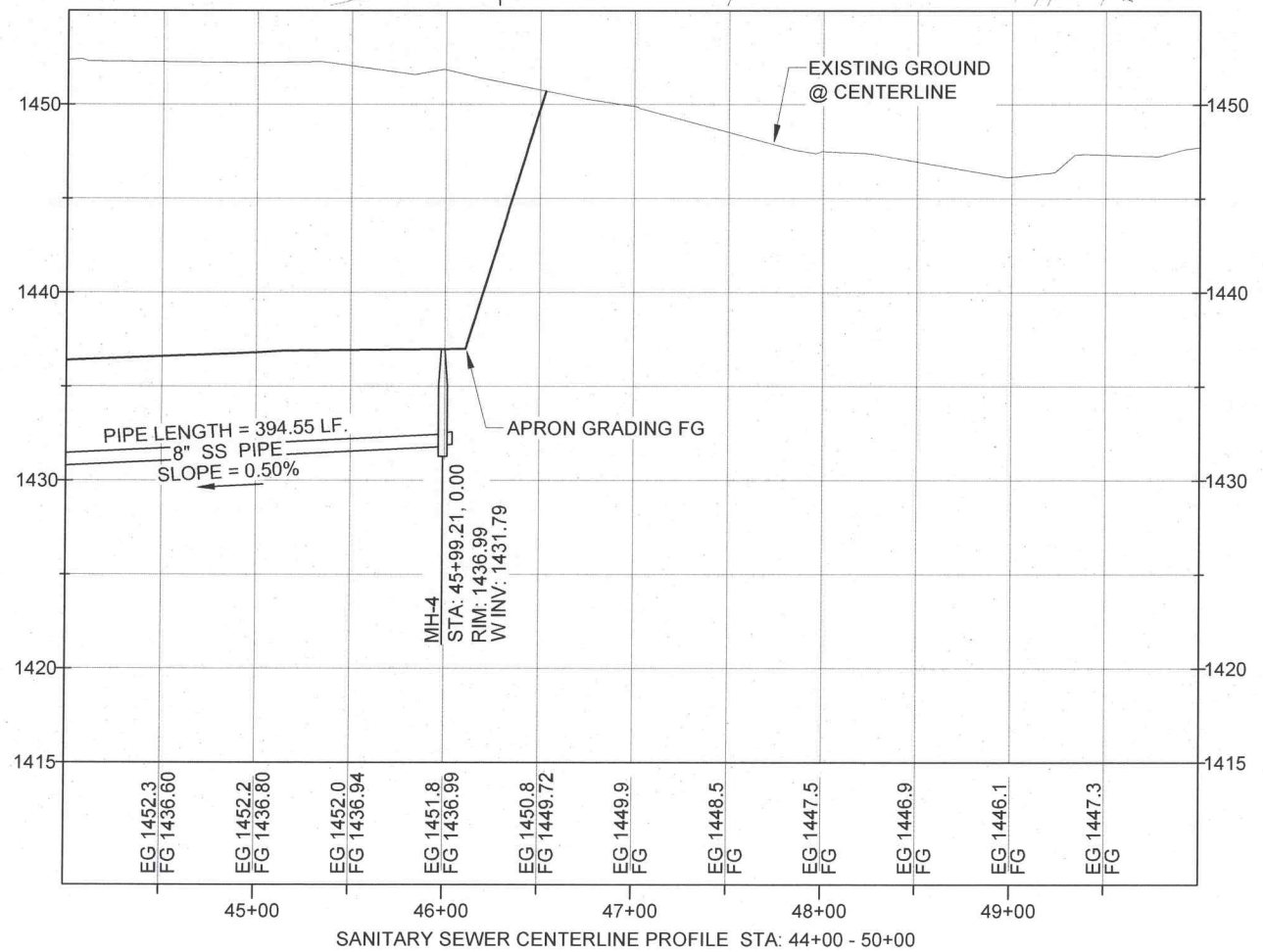
DESIGNED		DESIGN CHECKED		REVISIONS	
TSM	FILE NAME	JRW, MKA	DATE	NO.	DESCRIPTION
	1057-SMUTL.dwg <td></td> <td>11/2010 <td>1</td> <td>WATER MAINS MODIFIED</td> </td>		11/2010 <td>1</td> <td>WATER MAINS MODIFIED</td>	1	WATER MAINS MODIFIED
			06-29-2012 <td>2</td> <td>ANNOTATE CROSSING DETAIL</td>	2	ANNOTATE CROSSING DETAIL
				3	
				4	
				5	

PROFESSIONAL ENGINEER  
REGISTERED  
10971  
9/10/12  
STATE OF IDAHO  
SCOTT MACEY

SHEET 18 OF 27



NOTE:  
1. PROVIDE PLUGS AND PIPE MARKERS AT SEWER MAIN STUB OUTS.



A1 PIPE CROSSING DETAIL  
19 NTS

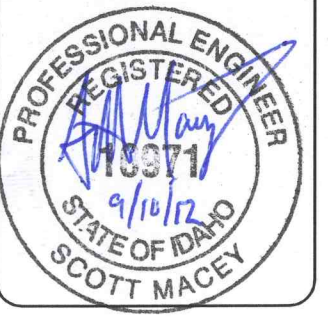
NOTE:  
SEWER MAIN PIPE SLEEVE NOT REQUIRED IF 18" VERT. SEPERATION O.D. TO O.D. IS MAINTAINED. SEE ISPWC STANDARD DETAIL SD-407.

-AS CONSTRUCTED-

LEWISTON - NEZ PERCE COUNTY  
SOUTH SIDE INDUSTRIAL AIR PARK  
EDA GRANT # 07-01-06054

REVISIONS	
NO.	DESCRIPTION
1	WATER MAINS MODIFIED
2	
3	
4	
5	

DESIGNED	DESIGN CHECKED	DRAWING CHECKED
TSM	JRW, MKA	JRW, MKA
FILE NAME	DRAWING DATE	DRAWING SCALE
1057-SMUTIL.DWG	9/11/12	AS SHOWN
SHEET	OF	27
19		

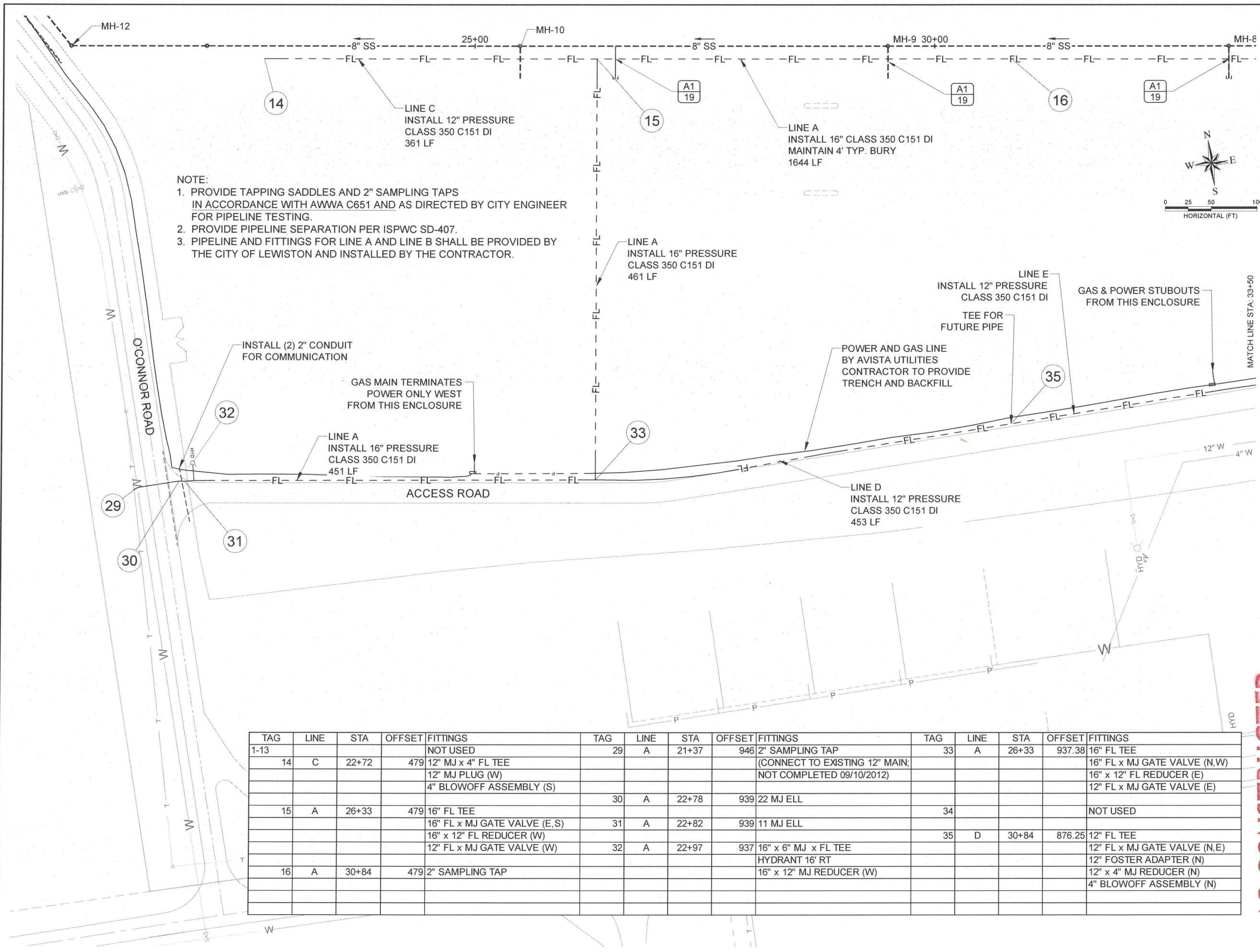


77 Southway, Suite C  
Lewiston, Id. 83501  
Phone: (208) 743-3818  
Fax: (208) 743-3819



THIS DOCUMENT, AND THE IDEAS AND DESIGNS INCORPORATED HEREIN, AS AN INSTRUMENT OF PROFESSIONAL SERVICES, IS THE PROPERTY OF RIEDEL ENGINEERING, INC. AND IS NOT TO BE USED, IN WHOLE OR IN PART, FOR ANY OTHER PROJECT, OR THE EXTENSION OF THIS PROJECT WITHOUT THE WRITTEN AUTHORIZATION OF RIEDEL ENGINEERING, INC.

E:\PROJECTS\1057 SOUTH SIDE INDUS. AIRPARK\ADD\CIVIL\3D\DRAWINGS\1057-FIRE.DWG



- NOTE:
1. PROVIDE TAPPING SADDLES AND 2" SAMPLING TAPS IN ACCORDANCE WITH AWWA C651 AND AS DIRECTED BY CITY ENGINEER FOR PIPELINE TESTING.
  2. PROVIDE PIPELINE SEPARATION PER ISPCW SD-407.
  3. PIPELINE AND FITTINGS FOR LINE A AND LINE B SHALL BE PROVIDED BY THE CITY OF LEWISTON AND INSTALLED BY THE CONTRACTOR.

TAG	LINE	STA	OFFSET	FITTINGS	TAG	LINE	STA	OFFSET	FITTINGS	TAG	LINE	STA	OFFSET	FITTINGS
1-13				NOT USED	29	A	21+37	946	2" SAMPLING TAP	33	A	26+33	937.38	16" FL TEE
14	C	22+72	479	12" MJ x 4" FL TEE 12" MJ PLUG (W) 4" BLOWOFF ASSEMBLY (S)					(CONNECT TO EXISTING 12" MAIN; NOT COMPLETED 09/10/2012)					16" FL x MJ GATE VALVE (N,W) 16" x 12" FL REDUCER (E) 12" FL x MJ GATE VALVE (E)
15	A	26+33	479	16" FL TEE 16" FL x MJ GATE VALVE (E,S) 16" x 12" FL REDUCER (W) 12" FL x MJ GATE VALVE (W)	30	A	22+78	939	22 MJ ELL	34				NOT USED
16	A	30+84	479	2" SAMPLING TAP	31	A	22+82	939	11 MJ ELL	35	D	30+84	876.25	12" FL TEE 12" FL x MJ GATE VALVE (N,E) 12" FOSTER ADAPTER (N) 12" x 4" MJ REDUCER (N) 4" BLOWOFF ASSEMBLY (N)
					32	A	22+97	937	16" x 6" MJ x FL TEE HYDRANT 16" RT 16" x 12" MJ REDUCER (W)					

-AS CONSTRUCTED-

77 Southway, Suite C  
Lewiston, Id. 83501  
Phone: (208) 743-3818  
Fax: (208) 743-3819

**RIEDEL**  
Engineering

THIS DOCUMENT, AND THE IDEAS AND DESIGNS INCORPORATED HEREIN, AS AN INSTRUMENT OF PROFESSIONAL SERVICES, IS THE PROPERTY OF RIEDEL ENGINEERING, INC. AND IS NOT TO BE USED, IN WHOLE OR IN PART, FOR ANY OTHER PROJECT, OR THE EXTENSION OF THIS PROJECT WITHOUT THE WRITTEN AUTHORIZATION OF RIEDEL ENGINEERING, INC.

LEWISTON - NEZ PERCE COUNTY  
SOUTH SIDE INDUSTRIAL AIR PARK  
EDA GRANT # 07-01-06034

DOMESTIC WATER AND FIRE LINES.

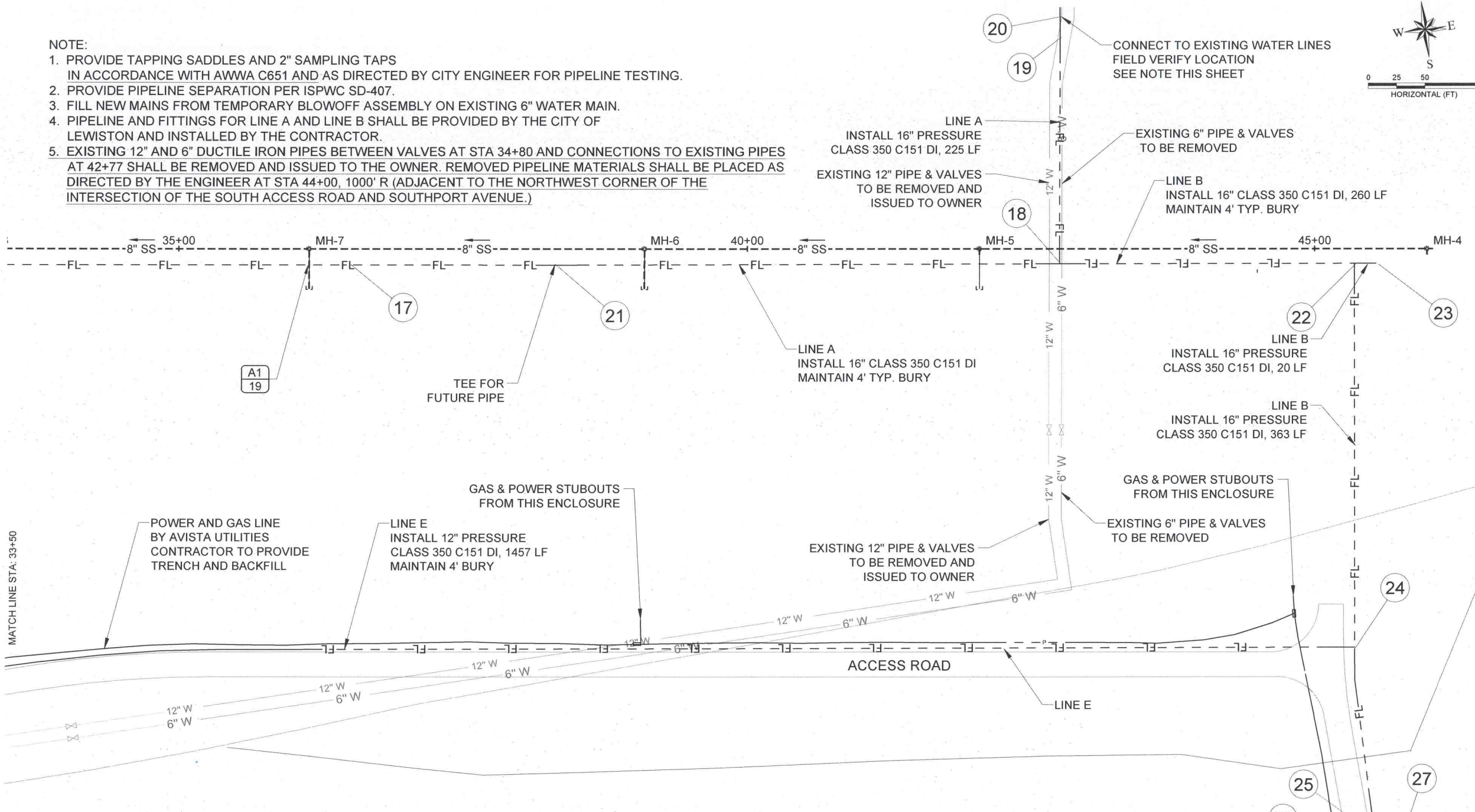
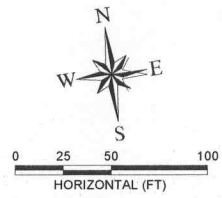
NO.	DATE	BY	DESCRIPTION
1	11/2010	SM	WATER MAINS MODIFIED
2	06-25-2012	SM	ADDENDA AND WATER MAIN CHANGES
3	09-10-2012	SM	ANNOTATE FUTURE PLANNED WORK BY CITY

DESIGNED: TSM  
DESIGN CHECKED: JRW, MKA  
DETAILED: TSM  
DRAWING CHECKED: JRW, MKA  
FILE NAME: 1057-FIRE.dwg  
DRAWING DATE: 9/11/12  
DRAWING SCALE: AS SHOWN  
SHEET 20 OF 27

**PROFESSIONAL ENGINEER**  
REGISTERED  
10371  
9/10/12  
STATE OF IDAHO  
SCOTT MACEY

**NOTE:**

1. PROVIDE TAPPING SADDLES AND 2" SAMPLING TAPS IN ACCORDANCE WITH AWWA C651 AND AS DIRECTED BY CITY ENGINEER FOR PIPELINE TESTING.
2. PROVIDE PIPELINE SEPARATION PER ISPWC SD-407.
3. FILL NEW MAINS FROM TEMPORARY BLOWOFF ASSEMBLY ON EXISTING 6" WATER MAIN.
4. PIPELINE AND FITTINGS FOR LINE A AND LINE B SHALL BE PROVIDED BY THE CITY OF LEWISTON AND INSTALLED BY THE CONTRACTOR.
5. EXISTING 12" AND 6" DUCTILE IRON PIPES BETWEEN VALVES AT STA 34+80 AND CONNECTIONS TO EXISTING PIPES AT 42+77 SHALL BE REMOVED AND ISSUED TO THE OWNER. REMOVED PIPELINE MATERIALS SHALL BE PLACED AS DIRECTED BY THE ENGINEER AT STA 44+00, 1000' R (ADJACENT TO THE NORTHWEST CORNER OF THE INTERSECTION OF THE SOUTH ACCESS ROAD AND SOUTHPORT AVENUE.)



TAG	LINE	STA	OFFSET	FITTINGS	TAG	LINE	STA	OFFSET	FITTINGS	TAG	LINE	STA	OFFSET	FITTINGS
17	A	36+62	479	2" SAMPLING TAP	21	A	38+41	479	16" MJ TEE 16" MJ PLUG (N)	24	B	45+37	815	16" x 12" MJ x FL TEE 12" FL x MJ GATE VALVE (W)
18	A	42+76	479	16" FL TEE 16" FL x MJ GATE VALVE (N,E,W) 16" 45 MJ ELL (VERT) x 2 (N) (PROVIDES 18" VERT CLEARANCE)	22	B	45+37	479	16" MJ x FL TEE 16" FL GATE VALVE (S)	25	B	45+58	993	16" x 6" MJ x FL TEE HYDRANT 9" LT
19	A	42+76	276	16" MJ x 4" FL TEE (TEMP) 4" BLOWOFF ASSEMBLY (TEMP) 16" MJ SOLID SLEEVE	23	B	45+47	484.81	16" MJ x 6" FL TEE 16" MJ PLUG (E) 6" x 4" FL REDUCER 4" BLOWOFF ASSEMBLY (S)	26	B	45+63	1017	11 MJ ELL (VERT)
20	A	42+77	267	16" MJ SOLID SLEEVE CONNECT TO EXISTING						27	B	45+65	1026	11 MJ ELL (VERT)
										28	B	45+69	1048	CONNECT TO EXISTING

**-AS CONSTRUCTED-**

77 Southway, Suite C  
Lewiston, Id. 83501  
Phone: (208) 743-3818  
Fax: (208) 743-3819



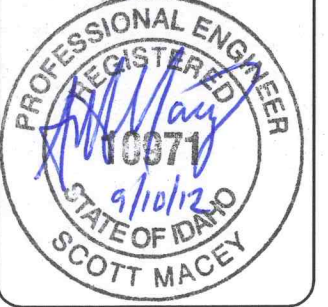
THIS DOCUMENT, AND THE IDEAS AND DESIGNS INCORPORATED HEREIN, AS AN INSTRUMENT OF PROFESSIONAL SERVICES, IS THE PROPERTY OF RIEDEL ENGINEERING, INC. AND IS NOT TO BE USED, IN WHOLE OR IN PART, FOR ANY OTHER PROJECT, OR THE EXTENSION OF THIS PROJECT WITHOUT THE WRITTEN AUTHORIZATION OF RIEDEL ENGINEERING, INC.

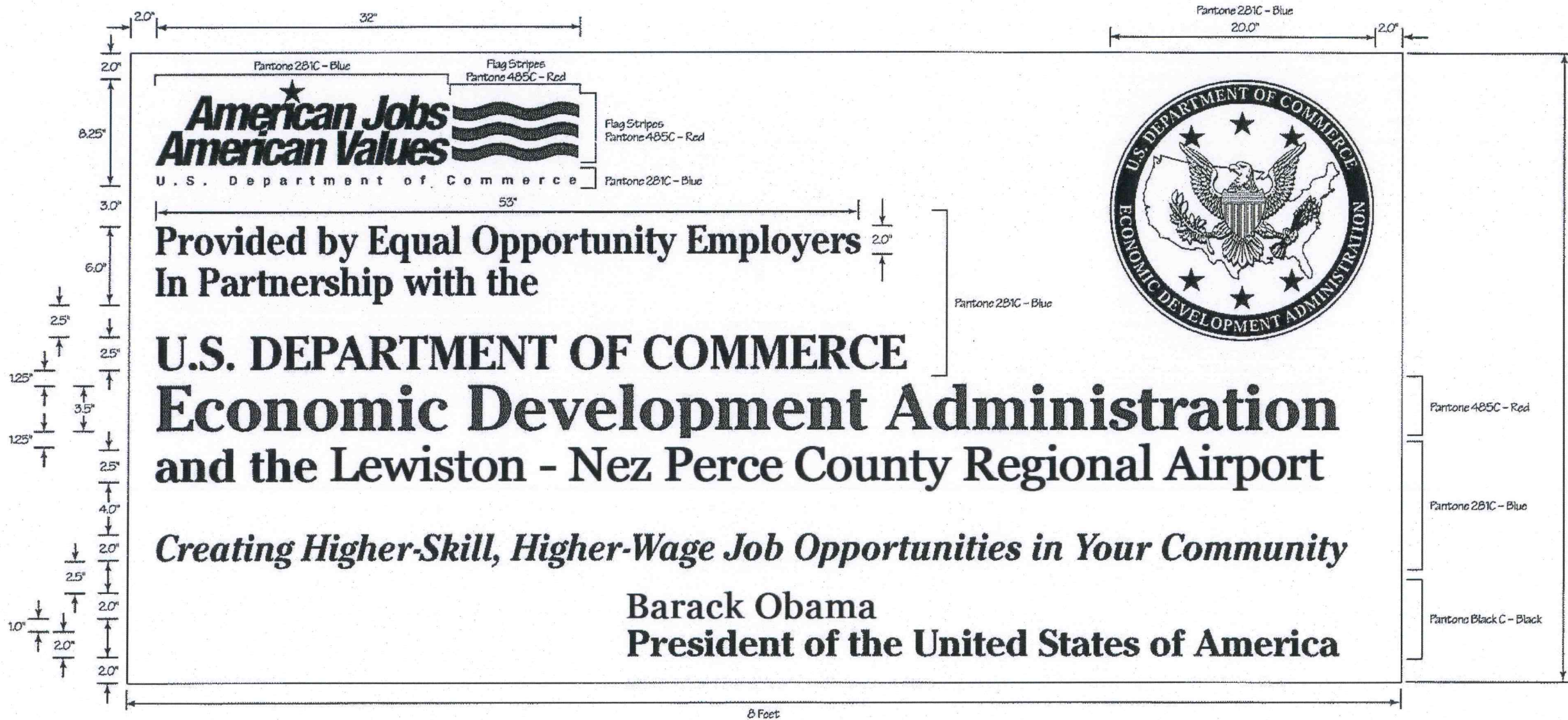
DESIGNED		DESIGN CHECKED		DETAILED		DRAWING CHECKED	
TSM	JRW	MKA	MKA	TSM	JRW	MKA	MKA

NO.	DATE	BY	DESCRIPTION
1	11/20/10	SM	WATER MAINS MODIFIED
2	06-29-2012	SM	ADDENDA AND WATER MAIN CHANGES
3			
4			
5			

LEWISTON - NEZ PERCE COUNTY  
SOUTH SIDE INDUSTRIAL AIR PARK  
EDA GRANT # 07-01-06054





AA EDA SIGN DETAIL  
22 N.T.S.

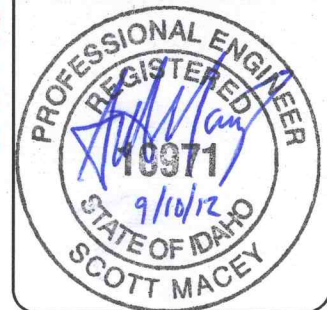
-AS CONSTRUCTED-

LEWISTON - NEZ PERCE COUNTY  
SOUTH SIDE INDUSTRIAL AIR PARK  
EDA GRANT # 07-01-06054

TRAFFIC CONTROL DETAILS

REVISIONS	
NO.	DESCRIPTION
1	BY GMF REPRINTED & STAMPED
2	DATE 12-10-2010
3	BY
4	DATE
5	BY
6	DATE

DESIGNED	TSM
DESIGN CHECKED	JRW, MKA
DETAILED	TSM
DRAWING CHECKED	JRW, MKA
FILE NAME	1057-TRAFFIC CONTROL.dwg
DRAWING DATE	9/10/12
DRAWING SCALE	AS SHOWN
SHEET	22 OF 27



**RIEDESEL Engineering**

77 Southway, Suite C  
Lewiston, Id. 83501  
Phone: (208) 743-3818  
Fax: (208) 743-3819

THIS DOCUMENT, AND THE IDEAS AND DESIGNS INCORPORATED HEREIN, AS AN INSTRUMENT OF PROFESSIONAL SERVICES, IS THE PROPERTY OF RIEDESEL ENGINEERING, INC. AND IS NOT TO BE USED, IN WHOLE OR IN PART, FOR ANY OTHER PROJECT, OR THE EXTENSION OF THIS PROJECT WITHOUT THE WRITTEN AUTHORIZATION OF RIEDESEL ENGINEERING, INC.