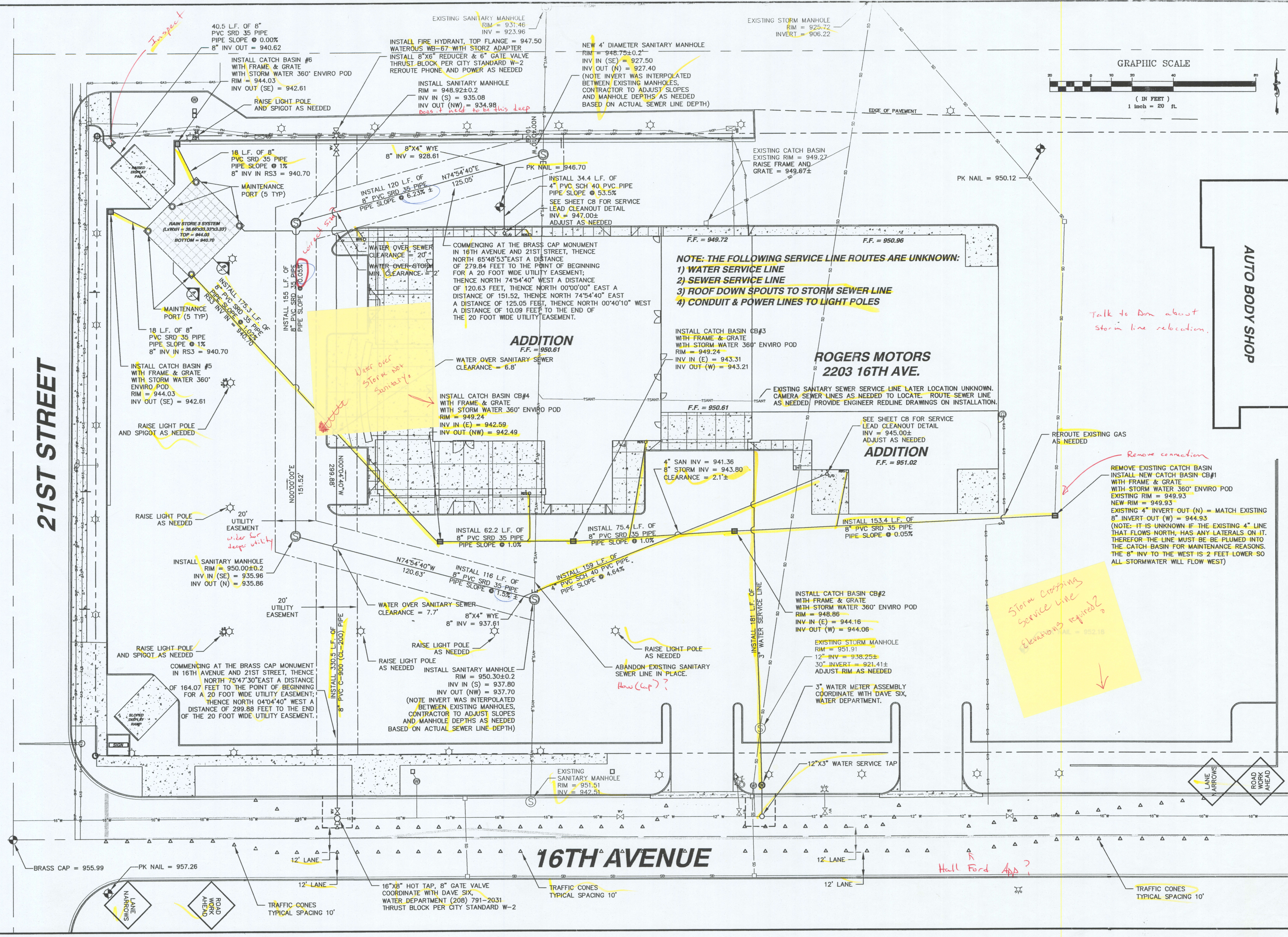
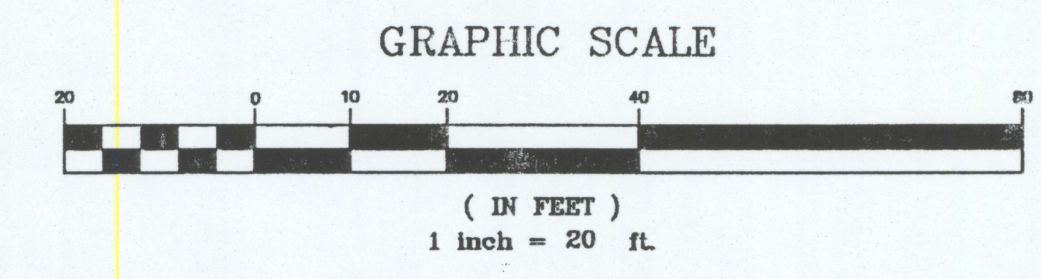


21ST STREET

16TH AVENUE



NOTE: THE FOLLOWING SERVICE LINE ROUTES ARE UNKNOWN:
1) WATER SERVICE LINE
2) SEWER SERVICE LINE
3) ROOF DOWN SPOUTS TO STORM SEWER LINE
4) CONDUIT & POWER LINES TO LIGHT POLES

ROGERS MOTORS
2203 16TH AVE.

AUTO BODY SHOP

Talk to Ann about storm line relocation.

Water over Storm box Sanitary.

Storm Crossing service line Elevations required?

REMOVE EXISTING CATCH BASIN
INSTALL NEW CATCH BASIN CB#1
WITH FRAME & GRATE
WITH STORM WATER 360" ENVIRO POD
EXISTING RIM = 949.93
NEW RIM = 949.93
EXISTING 4" INVERT OUT (N) = MATCH EXISTING
8" INVERT OUT (W) = 944.93
(NOTE: IT IS UNKNOWN IF THE EXISTING 4" LINE THAT FLOWS NORTH, HAS ANY LATERALS ON IT. THEREFOR THE LINE MUST BE PLUMED INTO THE CATCH BASIN FOR MAINTENANCE REASONS. THE 8" INV TO THE WEST IS 2 FEET LOWER SO ALL STORMWATER WILL FLOW WEST)

REVISIONS

NO.	DATE	BY	FILENAME

REGISTERED PROFESSIONAL ENGINEER
LEWISTON, IDAHO 83501
FAC 208-791-8862
CELL 208-791-8058
CHARLES R. TAYLOR
10962

REGISTERED PROFESSIONAL ENGINEER
LEWISTON, IDAHO 83501
FAC 208-791-8862
CELL 208-791-8058
NACLINE
ENGINEERING & DRAFTING
"an affordable alternative"

ROGER MOTORS
LEWISTON, IDAHO
GRADING PLAN
TRAFFIC CONTROL PLAN

DRAWN BY: CRF
DESIGNED BY: CRF
SCALE: 1" = 20'
DATE: 10/22/07
PROJECT NO.: 00077
SHEET C5 OF 10