

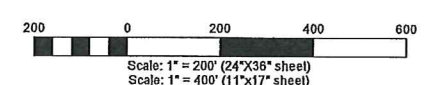
6' CONNER

LINDBERGH DRIVE

SOUTHPORT AVE

STEARMAN STREET

Airport Operations Building (AOB) Site
3632 Stearman St.



LEGEND					
EXISTING	FUTURE/ULTIMATE	DESCRIPTION	EXISTING	FUTURE/ULTIMATE	DESCRIPTION
		AIRFIELD DEVELOPMENT (ASPHALT)		0000 0000	THRESHOLD LIGHTS
		STRUCTURE/FACILITIES (BUILDING)	■	■	REL.
		AIRPORT PROPERTY LINE (APL)	—	—	VASI/PAPI
RSA(E)	RSA(F)	RUNWAY SAFETY AREA (RSA)	—	—	AIRPORT BEACON
OFZ(E)	OFZ(F)	OBSTACLE FREE ZONE (OFZ)	—	—	WIND CONE & SEGMENTED CIRCLE
ROFA(E)	ROFA(F)	RUNWAY OBJECT FREE AREA (ROFA)	—	—	ASOS
RFZ(E)	RFZ(F)	RUNWAY PROTECTION ZONE (RPZ)	—	—	LIGHTED WINDCOCKE
ERL(E)	ERL(F)	BUILDING RESTRICTION LINE (BRL)	—	—	SECTION CORNER
TSA(E)	TSA(F)	TAXIWAY SAFETY AREA (TSA)	—	—	DRAINAGE / WATER EDGE
TOFA(E)	TOFA(F)	TAXIWAY OBJECT FREE AREA (TOFA)	—	—	CONTROLS
APFA(E)	APFA(F)	APPROACH SURFACE	—	—	ROADS
TSR(E)	TSR(F)	THRESHOLD SITING SURFACE	—	—	MARKINGS
DS(E)	DS(F)	DEPARTURE SURFACE	—	—	FEICKING
GS(E)	GS(F)	GLIDE SLOPE CUAL SURFACE (GDS)	—	—	LOCALIZER CRITICAL AREA
RVZ(E)	RVZ(F)	RUNWAY VISIBILITY ZONE (RVZ)	—	—	CALLERT
N/A	—	TO BE REMOVED	—	—	AIRPORT REFERENCE POINT (ARP)
—	—	UTILITY POLE / LIGHT POLE	—	—	PACS/SACS MONUMENT
—	—	PARCEL LINES	—	—	GLIDE SLOPE CRITICAL AREA

NOTE: SOME LINES AND SYMBOLS MAY NOT BE PRESENT ON DRAWING

REV. NO.	DATE	DESCRIPTION	CHECKED	APPR.

SCALE: 1" = 200'

DRAWN BY: MEE
DATE: 12-21-17

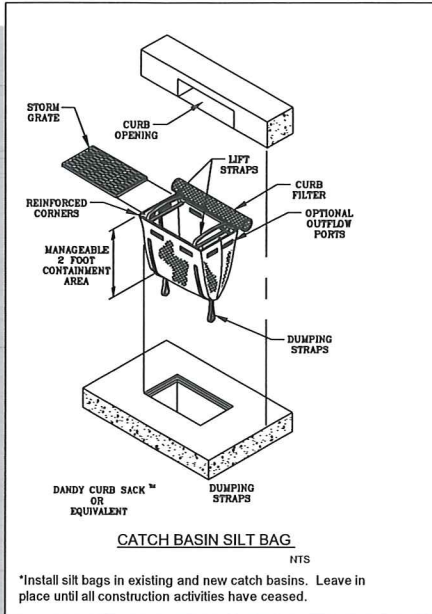
CHECKED BY: JSH
JOB #: 1712

SHEET: C4.0
DRAWING #: 1712-4.0

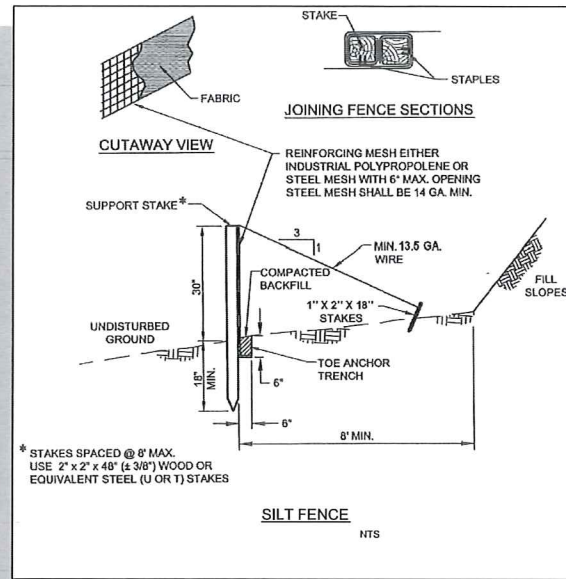
PROFESSIONAL ENGINEER - LAND SURVEYOR
REGISTERED #2102
STATE OF IDAHO
12/21/17

AVIATION DREAMS/ OPPORTUNITIES DEVELOPMENT
LEWISTON - NEZ PERCE COUNTY REGIONAL AIRPORT
PROJECT OVERVIEW
LEWISTON, IDAHO



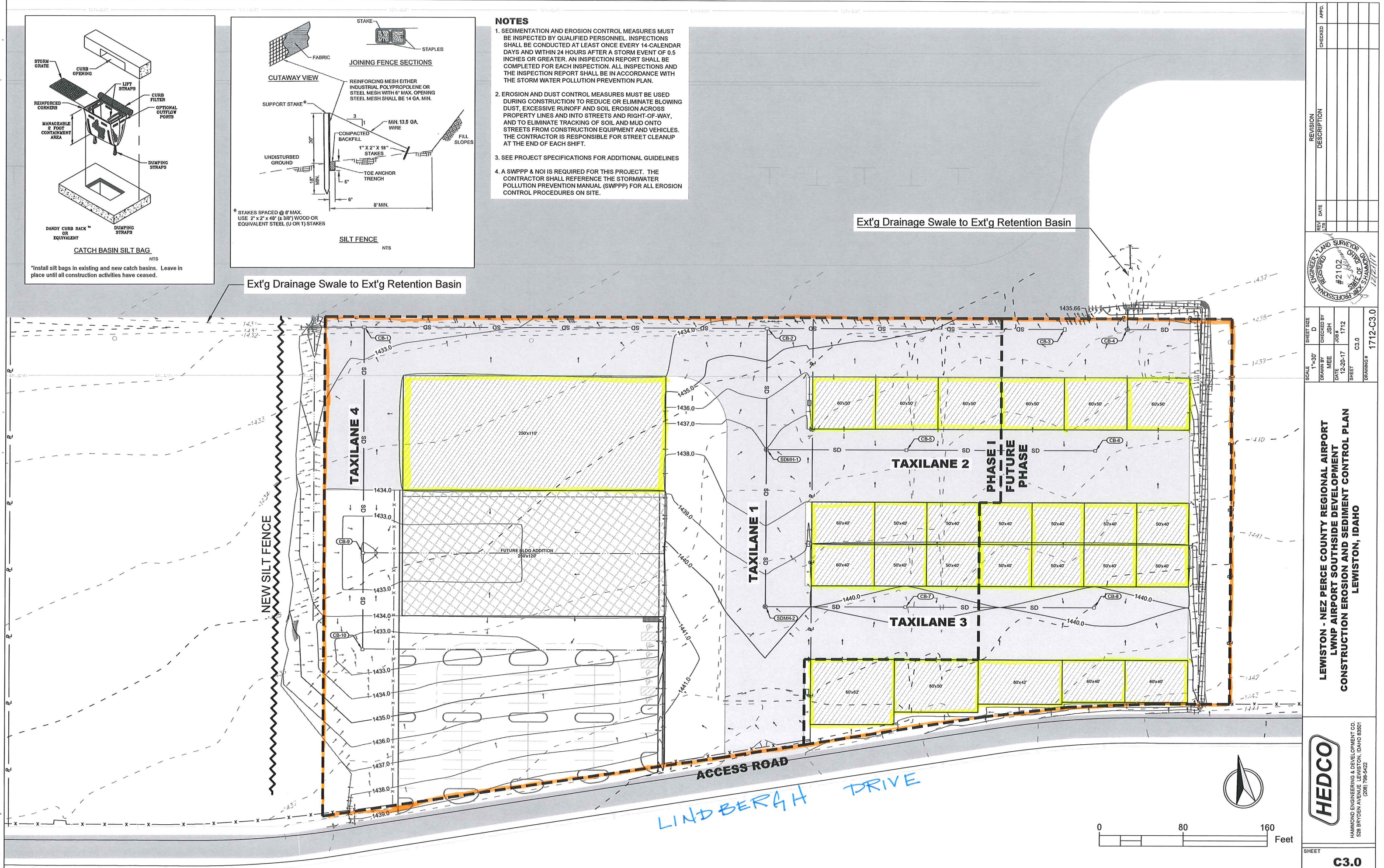


*Install silt bags in existing and new catch basins. Leave in place until all construction activities have ceased.



Ext'g Drainage Swale to Ext'g Retention Basin

- NOTES**
1. SEDIMENTATION AND EROSION CONTROL MEASURES MUST BE INSPECTED BY QUALIFIED PERSONNEL. INSPECTIONS SHALL BE CONDUCTED AT LEAST ONCE EVERY 14-CALENDAR DAYS AND WITHIN 24 HOURS AFTER A STORM EVENT OF 0.5 INCHES OR GREATER. AN INSPECTION REPORT SHALL BE COMPLETED FOR EACH INSPECTION. ALL INSPECTIONS AND THE INSPECTION REPORT SHALL BE IN ACCORDANCE WITH THE STORM WATER POLLUTION PREVENTION PLAN.
 2. EROSION AND DUST CONTROL MEASURES MUST BE USED DURING CONSTRUCTION TO REDUCE OR ELIMINATE BLOWING DUST, EXCESSIVE RUNOFF AND SOIL EROSION ACROSS PROPERTY LINES AND INTO STREETS AND RIGHT-OF-WAY, AND TO ELIMINATE TRACKING OF SOIL AND MUD ONTO STREETS FROM CONSTRUCTION EQUIPMENT AND VEHICLES. THE CONTRACTOR IS RESPONSIBLE FOR STREET CLEANUP AT THE END OF EACH SHIFT.
 3. SEE PROJECT SPECIFICATIONS FOR ADDITIONAL GUIDELINES
 4. A SWPPP & NOI IS REQUIRED FOR THIS PROJECT. THE CONTRACTOR SHALL REFERENCE THE STORMWATER POLLUTION PREVENTION MANUAL (SWPPP) FOR ALL EROSION CONTROL PROCEDURES ON SITE.



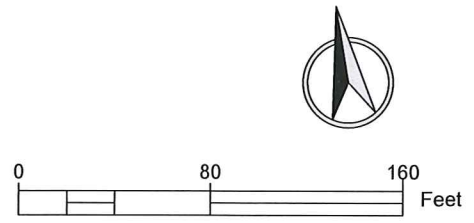
REV	DATE	DESCRIPTION

SCALE 1"=30'
 DRAWN BY MEE
 DATE 12-20-17
 SHEET C3.0
 DRAWING # 1712-C3.0

LEWISTON - NEZ PERCE COUNTY REGIONAL AIRPORT
 LWNP AIRPORT SOUTHSIDE DEVELOPMENT
 CONSTRUCTION EROSION AND SEDIMENT CONTROL PLAN
 LEWISTON, IDAHO

HEDCO
 HAMMOND ENGINEERING & DEVELOPMENT CO.
 528 BRYDEN AVENUE, LEWISTON, IDAHO 83501
 (208) 798-5422

SHEET **C3.0**





NO.	1
DATE	08/17/2017
BY	TRAVIS
CHECKED	
APPROVED	
PROJECT	
DESCRIPTION	
CLIENT	
SCALE	
SHEET NO.	
TOTAL SHEETS	

T-O ENGINEERS
CONSULTING ENGINEERS, SURVEYORS & PLANNERS
2472 S. TIKIAWA PLACE
RENO, NV 89509
PHONE (775) 785-1234
FAX (775) 785-1234
WWW.T-OENGINEERS.COM

LEWISTON NEZ-PELCE COUNTY REGIONAL AIRPORT (LWS)
AIRPORT OPERATIONS BUILDING
SITE SURVEY

SHEET 01.0 OF 10

CIVIL SHEET INDEX

SHEET NUMBER	SHEET TITLE
C1.0	SITE SURVEY
C2.0	CIVIL SITE PLAN
C3.0	CONSTRUCTION SAFETY AND PHASING
C4.0	SITE UTILITY PLAN
C5.0	GRAVING AND DRAINAGE PLAN
C6.0	PAVING PLAN
C7.0	HILLSIDE REMOVAL BID ALTERNATE #3
C8.0	PAVING, GRADING, AND DRAINAGE DETAILS
C9.0	FENCING AND GATE LAYOUT
C10.0	FENCING GATE AND STRING DETAILS

Survey Control Information

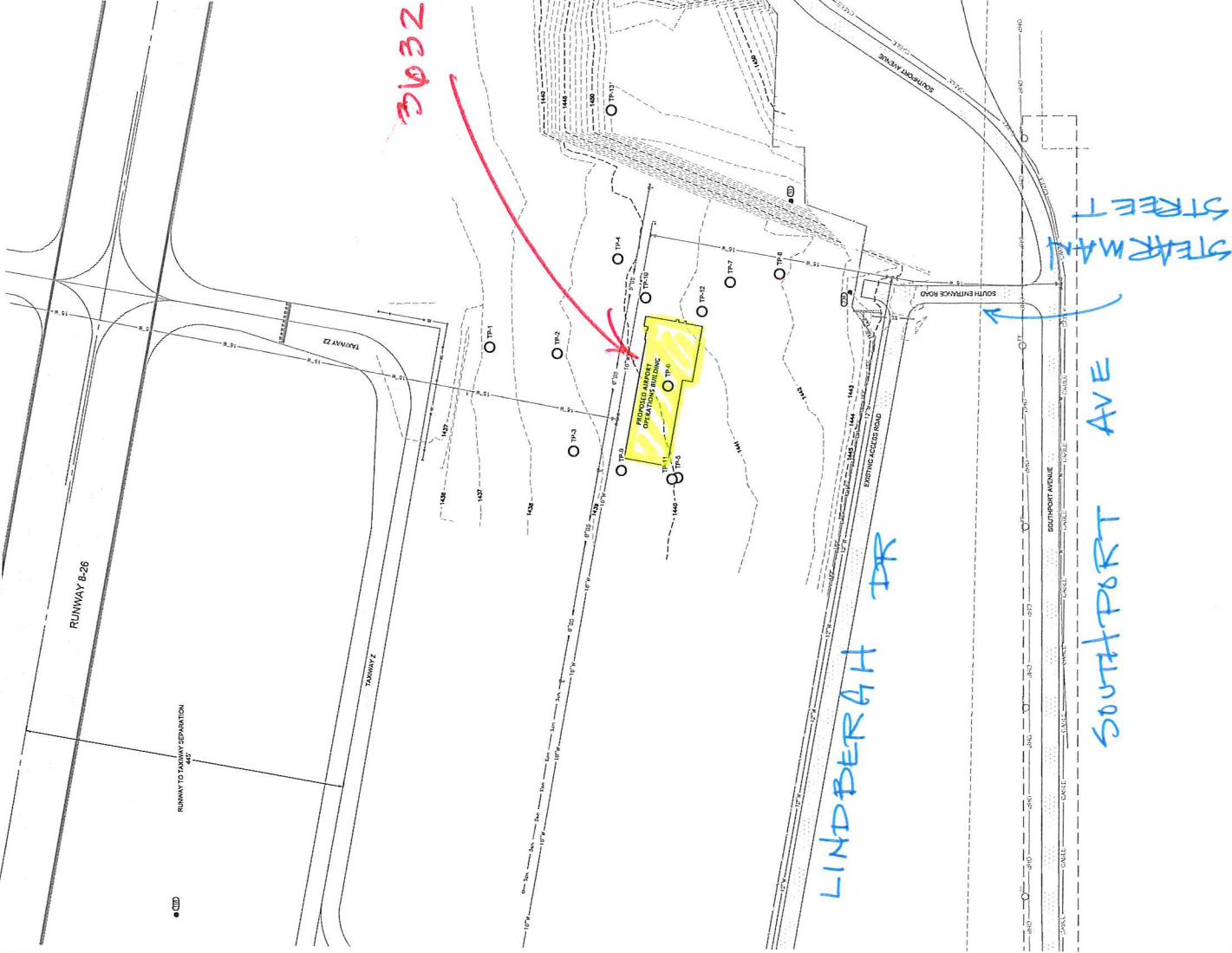
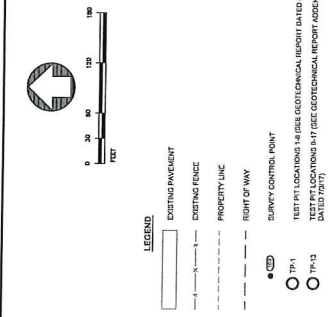
Point #	Description	Coordinates	Elevation
10	SET IRILLAK & CAP	N: 1717022.275 E: 2704022.275	1444.87
105	IND 105 TBM	N: 1717022.127 E: 2704022.944	1429.34
106	IND 106 TBM	N: 1717022.551 E: 2704022.944	1429.97
109	IND 109 TBM	N: 1717022.689 E: 2704022.100	1427.97
201	SET PK	N: 1717022.270 E: 2704022.270	1444.87

31032 STEARMAN STREET

LINDERBAH DR

SOUTHPORT AVE

STEARMAN STREET



- NOTES
- EXISTING SURVEY MONUMENTS SHALL BE PROTECTED.
 - PRIMARY UTILITIES ARE SHOWN THROUGHOUT THESE DRAWINGS FOR REFERENCE ONLY. THE CONTRACTOR SHALL VERIFY THE LOCATION AND DEPTH OF ALL UNDERGROUND UTILITIES PRIOR TO CONSTRUCTION. THE CONTRACTOR SHALL RETAIN AND PROTECT DURING PROGRESS OF WORK UNLESS OTHERWISE NOTED.
 - UTILITIES: ANY REVISIONS TO THE CONTRACTOR SHALL LOCATE AND MARK WITH PAINT ALL UNDERGROUND UTILITIES. ELECTRICAL UTILITIES SHALL BE MARKED WITH RED. ALL UTILITIES SHALL BE MARKED WITH CALL OUT LINE AT 1000' 3/4" PRIOR TO ANY EXCAVATION. CALL OUT LINE WITH THE FAULT (587) 742-2601.
 - CONSTRUCTION OF THE PROPOSED AIRPORT OPERATIONS BUILDING, PREPARED BY ALUMINUM INDUSTRIES, INC., IS SUBJECT TO THE SPECIFICATIONS SECTION 02300. TEST PIT LOCATIONS ARE DATED JULY 2, 2017 AND ARE INCLUDED IN THE SPECIFICATIONS SECTION 02300. TEST PIT LOCATIONS ARE SHOWN ON THIS DRAWING FOR REFERENCE ONLY. SEE GEOTECHNICAL ENGINEERING EVALUATION FOR DETAILED INFORMATION REGARDING TEST PIT LOGS.

REVIEWED FOR CODE COMPLIANCE