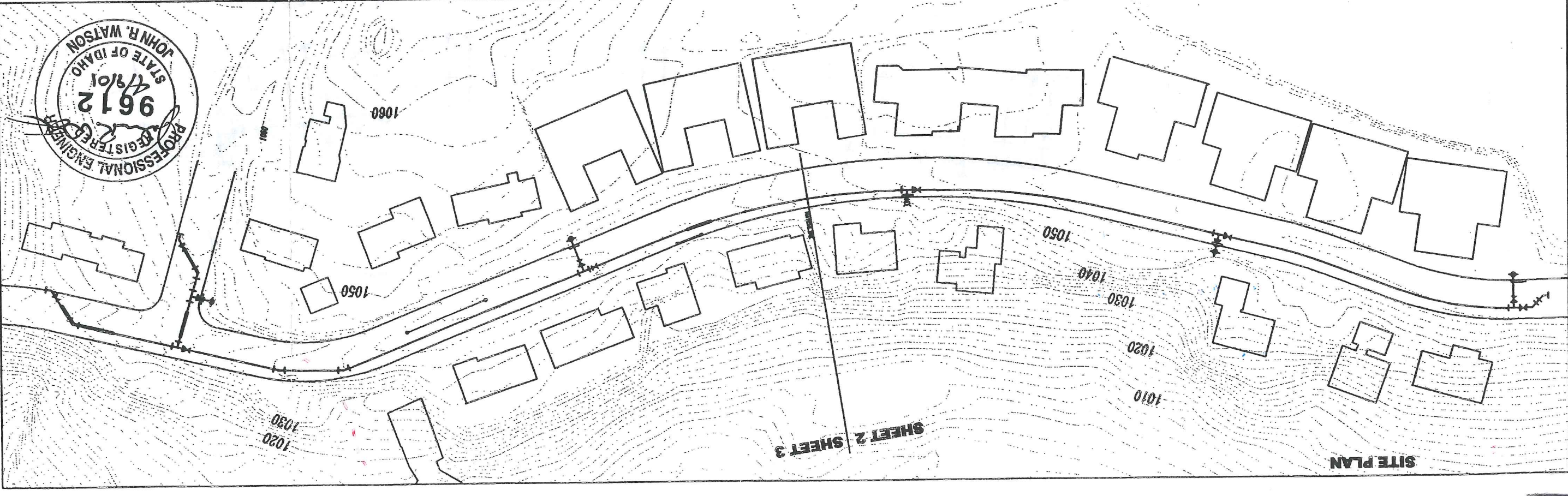


LEGEND

ITEM	EXISTING	PROPOSED
Deciduous Tree	(Symbol)	(Symbol)
Shrub	(Symbol)	(Symbol)
Traffic Sign	(Symbol)	(Symbol)
Telephone Riser	(Symbol)	(Symbol)
Utility Pole	(Symbol)	(Symbol)
Utility Pole Anchor	(Symbol)	(Symbol)
Gas Meter	(Symbol)	(Symbol)
Catch Basin	(Symbol)	(Symbol)
Storm Drain Manhole	(Symbol)	(Symbol)
Sanitary Sewer Manhole	(Symbol)	(Symbol)
Water Meter Setting	(Symbol)	(Symbol)
Water Valve	(Symbol)	(Symbol)
Fire Hydrant	(Symbol)	(Symbol)
Tee	(Symbol)	(Symbol)
90° Elbow	(Symbol)	(Symbol)
45° Elbow	(Symbol)	(Symbol)
22.5° Elbow	(Symbol)	(Symbol)
11.25° Elbow	(Symbol)	(Symbol)
Pressure Reducing Valve (PRV) Station	(Symbol)	(Symbol)
Remove & Replace (Fire Hydrant or Water Meter Setting)	(Symbol)	(Symbol)
Remove (Fire Hydrant or Water Meter Setting)	(Symbol)	(Symbol)
Water	(Symbol)	(Symbol)
Gas	(Symbol)	(Symbol)

CONSTRUCTION NOTES

- UTILITY LOCATIONS SHOWN ARE APPROXIMATE. CONTRACTOR SHALL VERIFY EXACT LOCATIONS IN FIELD PRIOR TO EXCAVATION. ANY UTILITIES DAMAGED DURING CONSTRUCTION SHALL BE REPAIRED BY THE CONTRACTOR OR UTILITY COMPANY, AT THE CONTRACTOR'S EXPENSE, TO THE SATISFACTION OF THE UTILITY COMPANY.
- UTILITY FORCES MAY ENGAGE IN MOVING, RECONSTRUCTING OR INSTALLING, OR MAINTAINING UTILITY FACILITIES, AND THE CONTRACTOR SHALL COOPERATE WITH THESE FORCES AND CONDUCT OPERATIONS IN SUCH A MANNER AS TO AVOID ANY DELAY TO WORK BEING PERFORMED BY OTHER FORCES. THE CONTRACTOR SHALL JOIN HIS WORK WITH THE WORK OF THE OTHERS AND PERFORM THE WORK IN PROPER SEQUENCE AND WITH JUDICIOUS HANDLING OF FORCES AND EQUIPMENT.
- EXISTING FIBER OPTIC COMMUNICATIONS CABLE WILL BE RELOCATED DURING CONSTRUCTION. CONTRACTOR SHALL BE RESPONSIBLE TO COORDINATE WITH CABLE ONE (AT & T) CREWS TO EXPEDITE UTILITY AND PROJECT WORK. CONTACT TOM DONOHUE AT (208) 746-0290.
- SURVEYING AND CONSTRUCTION STAKING FOR SEWER AND WATER MAIN CONSTRUCTION WILL BE PERFORMED BY THE CITY OF LEWISTON. CONTRACTOR SHALL RETAIN AND PROTECT CONSTRUCTION STAKING, AND SHALL NOTIFY THE ENGINEER OF ANY ERRORS.
- CONTRACTOR SHALL PERFORM CUTTING PRIOR TO PIPELINE INSTALLATION, AND PAVEMENT REPAIRS FOLLOWING COMPLETION OF THE WORK. IF ADD ALTERNATES #1 AND #2 ARE AWARDED, CONTRACTOR SHALL BE RESPONSIBLE FOR REMOVAL AND REPLACEMENT OF ALL ROADWAY SURFACING.
- SHOULD ADD ALTERNATE #1-SURFACE RECONSTRUCTION OF THIS PROJECT NOT BE AWARDED, CITY SHALL PERFORM PAVEMENT CUTTING PRIOR TO PIPELINE INSTALLATION, AND PAVEMENT REPAIRS FOLLOWING COMPLETION OF THE WORK. IF ADD ALTERNATES #1 AND #2 ARE AWARDED, CONTRACTOR SHALL BE RESPONSIBLE FOR REMOVAL AND REPLACEMENT OF ALL ROADWAY SURFACING.
- SEWER MAIN AND SEWER SERVICE CONNECTION WORK SHALL BE COMPLETED PRIOR TO BEGINNING WATER LINE CONSTRUCTION. THE EXISTING WATER LINE SHALL BE KEPT IN SERVICE UNTIL ALL WATER SERVICE CONNECTIONS ARE INSTALLED ON THE NEW WATER MAIN.
- ALL WATER MAINS SHALL BE INSTALLED WITH A MINIMUM HORIZONTAL SEPARATION OF 10' BETWEEN THE WATER MAIN AND SANITARY OR STORM SEWER MAIN AND IN COMPLIANCE WITH CITY OF LEWISTON STANDARD DRAWING W-9.
- AT ALL WATER/SEWER MAIN CROSSINGS, WATER MAINS SHALL BE CONSTRUCTED TO PROVIDE A MINIMUM 18" VERTICAL SEPARATION BETWEEN THE OUTSIDE OF THE WATER MAIN AND OUTSIDE OF THE SANITARY OR STORM SEWER MAIN. THE WATER MAIN SHALL BE INSTALLED WITH A MINIMUM 20' LENGTH CONCRETE ENCASEMENT AT THE SEWER LINE CROSSING.
- THRUST BLOCKS SHALL BE INSTALLED AT ALL FITTING LOCATIONS AS SPECIFIED ON CITY STANDARD DRAWING W-2. THRUST BLOCKS SHALL BE CONSTRUCTED TO SIZES BASED ON ALLOWABLE SOIL STRESS OF 1000 PSI.
- REMOVAL OF CURB FOR HYDRANT INSTALLATION IS INCIDENTAL TO THAT ITEM. PAY LENGTH FOR REPLACEMENT OF CURB AND GUTTER OVER HYDRANT LEADS SHALL BE AS INDICATED OR DIRECTED BY THE ENGINEER. WHEN WATER SERVICES ARE REQUIRED BENEATH EXISTING CURBS, THE CONTRACTOR SHALL PRESERVE AND PROTECT EXISTING CURBS.
- CONNECTION OF EXISTING WATER SERVICE LINES SHALL BE PERFORMED IN ACCORDANCE WITH DETAIL (D).
- WATER SERVICE LINES FOR UNDEVELOPED PARCELS WHERE NO METER EXISTS SHALL BE PERFORMED IN ACCORDANCE WITH DETAIL (E).
- EXCEPT AS REQUIRED IN THE SPECIFICATIONS, THE CONTRACTOR WILL NOT BE REQUIRED TO DISINFECT NEW WATER MAINS. THE CONTRACTOR SHALL INSTALL FITTINGS AND APPURTENANCES AS REQUIRED BY THE OWNER FOR DISINFECTION. THE CITY OF LEWISTON WATER DEPARTMENT WILL THEN PERFORM SYSTEM DISINFECTION.
- ALL PUBLIC UTILITY, SEWER, WATER, AND SERVICE LINE SHALL BE COMPLETED BEFORE ROADWAY BASE OR PAVEMENT MAY BE PLACED. ALL DISTURBED AREAS OUTSIDE OF THE ROADWAY CORRIDOR SHALL BE RESTORED TO THEIR ORIGINAL CONDITION.



Constructed

CITY OF LEWISTON
ENGINEERING DEPARTMENT
1134 T STREET LEWISTON ID 83501
208-746-1318

2001 STREET MAINTENANCE PROJECT
COUNTRY CLUB DRIVE
RECONSTRUCTION
ADD ALTERNATE #3

NO.	DATE	REVISIONS	DESCRIPTION	BY	JOB NO.

DESIGNED BY	SCALE	DATE
S.M.	1"=100'	APR 2001

CHECKED BY	DRAWING NO.	SHEET	OF
D.S.	SITE PLAN	1	4

WATER MAIN SCHEDULE

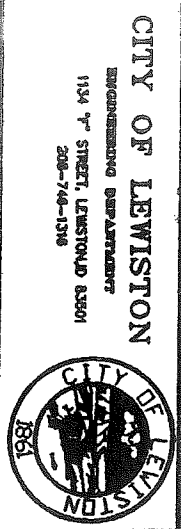
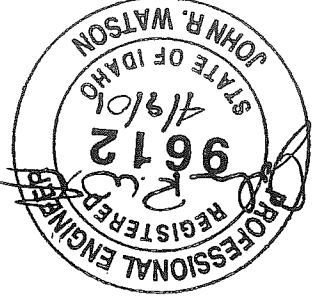
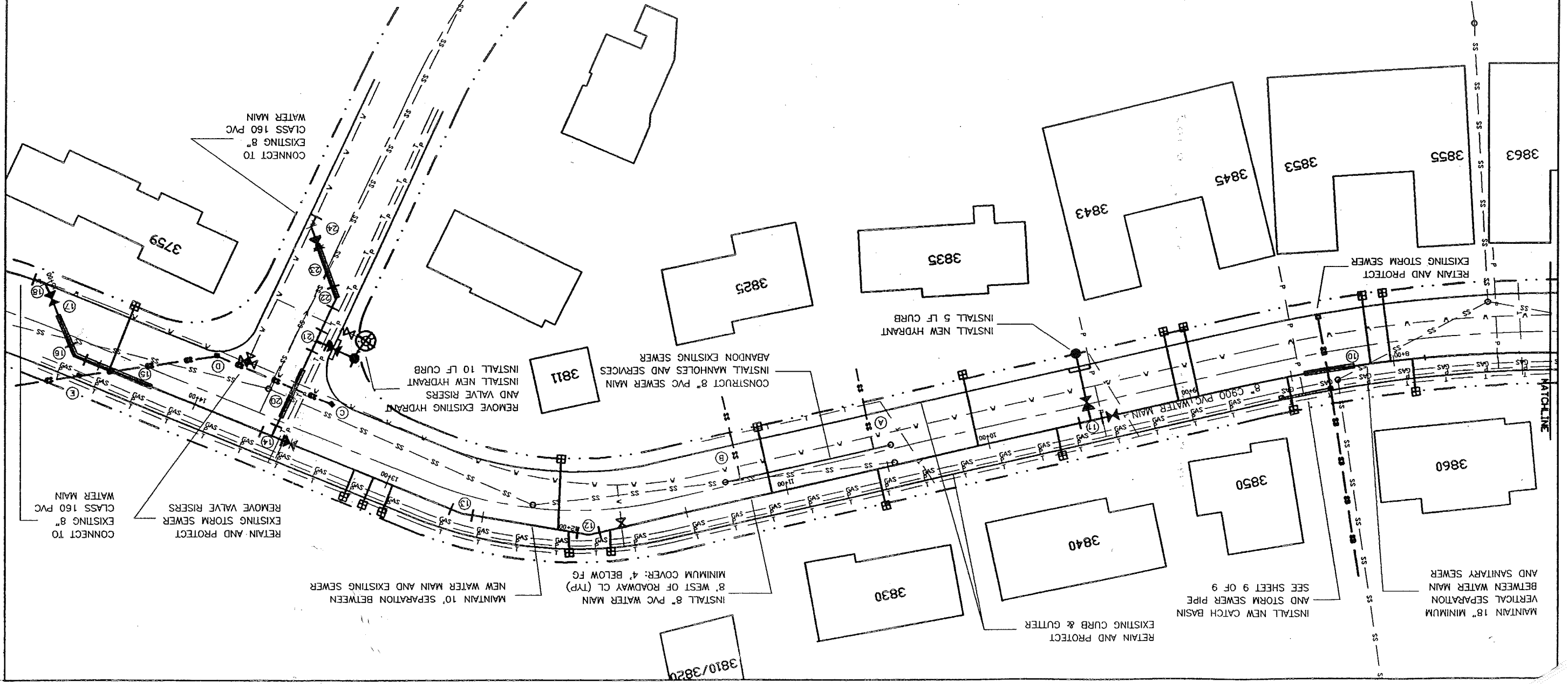
NO. LINE	STATION	OFFSET	NOTES	LINE	ADDRESS	SIDE	SERVICE SIZE	EXISTING LENGTH	REPLACE LENGTH	NOTES	ID.	ITEM OF WORK	NOTES
10	A		CONCRETE ENCASUREMENT - 25 LF	A	3865	RT.	1"	35.2	22			SEWER MANHOLE INVERT DEPTH : 8.0' FROM FG	
11	A	9+48	8" GATE VALVE	A	3863	RT.	1"	35.0	22			PVC SEWER MAIN 82 LF 8" PVC	
12	A	11+99	8" 22.5" ELBOW	A	3855	RT.	1"	33.2	20			SEWER MANHOLE INVERT DEPTH : 8.0' FROM FG	
13	A	12+60	8" 11.25" ELBOW	A	3853	RT.	1"	33.0	20			CONNECT TO EXISTING	
14	A	13+58	8" GATE VALVE	A	3850	LT.	1"	16.3	3				
15	A	13+60	8"x8"x8" TEE	A	3845	RT.	1"	34.1	19				
16	A	14+62	8" 45" ELBOW	A	3840	LT.	1"	13.6	3				
17	A	14+95	8" GATE VALVE	A	3835	RT.	1"	35.1	19				
18	A	15+00	8" 45" ELBOW	A	3830	LT.	1"	18.1	3				
20	B	15+00	CONNECT TO EXISTING 8" MAIN	A	3825	RT.	1"	32.6	19				
20	B		CONCRETE ENCASUREMENT - 25 LF	A	3820	LT.	1"	10.2	3				
21	B	0+51	FIRE HYDRANT ASSEMBLY	A	3811	RT.	1"	33.8	34				REPLACE TO METER
22	B	0+74	8" 45" ELBOW	A	3810	LT.	1"	10.1	3				
23	B	1+05	CONCRETE ENCASUREMENT - 27 LF	A	3762	LT.	1"	14.1	3				
23	B		8" GATE VALVE	A	3760	LT.	1"	14.1	3				
24	B	1+10	8" 45" ELBOW	A	3759	RT.	1"	33.1	33				REPLACE TO METER
24	B		CONNECT TO EXISTING 6" MAIN	A	3758	LT.	1"	14.1	3				

SEWER SERVICE NOTES

NO.	LINE	STATION	OFFSET	NOTES	LINE	ADDRESS	SIDE	SERVICE SIZE	EXISTING LENGTH	REPLACE LENGTH	NOTES	ID.	ITEM OF WORK	NOTES
10	A			CONCRETE ENCASUREMENT - 25 LF	A	3865	RT.	1"	35.2	22			SEWER MANHOLE INVERT DEPTH : 8.0' FROM FG	
11	A	9+48		8" GATE VALVE	A	3863	RT.	1"	35.0	22			PVC SEWER MAIN 82 LF 8" PVC	
12	A	11+99		8" 22.5" ELBOW	A	3855	RT.	1"	33.2	20			SEWER MANHOLE INVERT DEPTH : 8.0' FROM FG	
13	A	12+60		8" 11.25" ELBOW	A	3853	RT.	1"	33.0	20			CONNECT TO EXISTING	
14	A	13+58		8" GATE VALVE	A	3850	LT.	1"	16.3	3				
15	A	13+60		8"x8"x8" TEE	A	3845	RT.	1"	34.1	19				
16	A	14+62		8" 45" ELBOW	A	3840	LT.	1"	13.6	3				
17	A	14+95		8" GATE VALVE	A	3835	RT.	1"	35.1	19				
18	A	15+00		8" 45" ELBOW	A	3830	LT.	1"	18.1	3				
20	B	15+00		CONNECT TO EXISTING 8" MAIN	A	3825	RT.	1"	32.6	19				
20	B			CONCRETE ENCASUREMENT - 25 LF	A	3820	LT.	1"	10.2	3				
21	B	0+51		FIRE HYDRANT ASSEMBLY	A	3811	RT.	1"	33.8	34				REPLACE TO METER
22	B	0+74		8" 45" ELBOW	A	3810	LT.	1"	10.1	3				
23	B	1+05		CONCRETE ENCASUREMENT - 27 LF	A	3762	LT.	1"	14.1	3				
23	B			8" GATE VALVE	A	3760	LT.	1"	14.1	3				
24	B	1+10		8" 45" ELBOW	A	3759	RT.	1"	33.1	33				REPLACE TO METER
24	B			CONNECT TO EXISTING 6" MAIN	A	3758	LT.	1"	14.1	3				

SEWER SCHEDULE & NOTES

NO.	LINE	STATION	OFFSET	NOTES	LINE	ADDRESS	SIDE	SERVICE SIZE	EXISTING LENGTH	REPLACE LENGTH	NOTES	ID.	ITEM OF WORK	NOTES
10	A			CONCRETE ENCASUREMENT - 25 LF	A	3865	RT.	1"	35.2	22			SEWER MANHOLE INVERT DEPTH : 8.0' FROM FG	
11	A	9+48		8" GATE VALVE	A	3863	RT.	1"	35.0	22			PVC SEWER MAIN 82 LF 8" PVC	
12	A	11+99		8" 22.5" ELBOW	A	3855	RT.	1"	33.2	20			SEWER MANHOLE INVERT DEPTH : 8.0' FROM FG	
13	A	12+60		8" 11.25" ELBOW	A	3853	RT.	1"	33.0	20			CONNECT TO EXISTING	
14	A	13+58		8" GATE VALVE	A	3850	LT.	1"	16.3	3				
15	A	13+60		8"x8"x8" TEE	A	3845	RT.	1"	34.1	19				
16	A	14+62		8" 45" ELBOW	A	3840	LT.	1"	13.6	3				
17	A	14+95		8" GATE VALVE	A	3835	RT.	1"	35.1	19				
18	A	15+00		8" 45" ELBOW	A	3830	LT.	1"	18.1	3				
20	B	15+00		CONNECT TO EXISTING 8" MAIN	A	3825	RT.	1"	32.6	19				
20	B			CONCRETE ENCASUREMENT - 25 LF	A	3820	LT.	1"	10.2	3				
21	B	0+51		FIRE HYDRANT ASSEMBLY	A	3811	RT.	1"	33.8	34				REPLACE TO METER
22	B	0+74		8" 45" ELBOW	A	3810	LT.	1"	10.1	3				
23	B	1+05		CONCRETE ENCASUREMENT - 27 LF	A	3762	LT.	1"	14.1	3				
23	B			8" GATE VALVE	A	3760	LT.	1"	14.1	3				
24	B	1+10		8" 45" ELBOW	A	3759	RT.	1"	33.1	33				REPLACE TO METER
24	B			CONNECT TO EXISTING 6" MAIN	A	3758	LT.	1"	14.1	3				



REVISIONS		DATE	BY	DESCRIPTION
NO.	DATE	FILENAME		

DESIGNED BY	S.M.	SCALE	1"=50'
DRAWN BY	S.M.	DATE	APR 2001
CHECKED BY	D.S.	DRAWING NO.	PLAN
DATE		SHEET	3 OF 4

2001 STREET MAINTENANCE PROJECT
COUNTRY CLUB DRIVE RECONSTRUCTION
ADD ALTERNATE #3