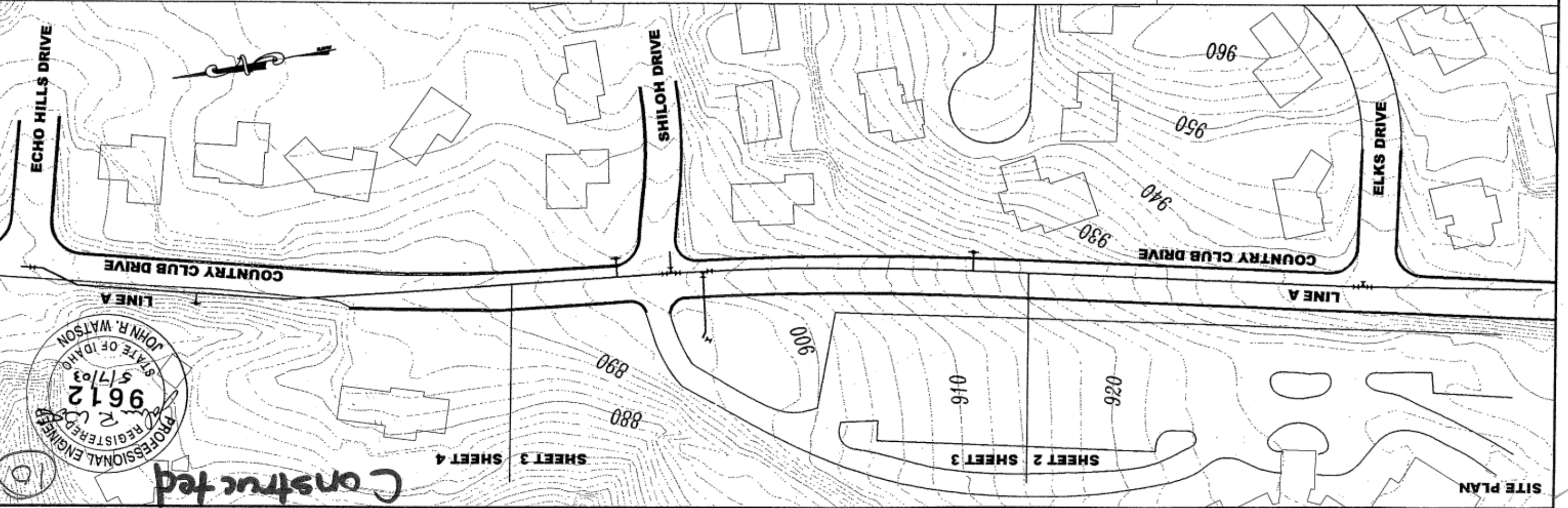


VICINITY MAP

LEGEND

ITEM	EXISTING	PROPOSED
Deciduous Tree	(Symbol)	(Symbol)
Shrub	(Symbol)	(Symbol)
Traffic Sign	(Symbol)	(Symbol)
Telephone Riser	(Symbol)	(Symbol)
Utility Pole	(Symbol)	(Symbol)
Utility Pole Anchor	(Symbol)	(Symbol)
Gas Meter	(Symbol)	(Symbol)
Catch Basin	(Symbol)	(Symbol)
Storm Drain Manhole	(Symbol)	(Symbol)
Sanitary Sewer Manhole	(Symbol)	(Symbol)
Water Meter Setting	(Symbol)	(Symbol)
Water Valve	(Symbol)	(Symbol)
Fire Hydrant	(Symbol)	(Symbol)
1.25" Elbow	(Symbol)	(Symbol)
22.5" Elbow	(Symbol)	(Symbol)
Pressure Reducing Valve (PRV) Station	(Symbol)	(Symbol)
Remove & Replace (Fire Hydrant or Water Meter Setting)	(Symbol)	(Symbol)
Remove (Fire Hydrant or Water Meter Setting)	(Symbol)	(Symbol)
Water	(Symbol)	(Symbol)
Gas	(Symbol)	(Symbol)
Cable TV	(Symbol)	(Symbol)

- CONSTRUCTION NOTES**
- UTILITY LOCATIONS SHOWN ARE APPROXIMATE. CONTRACTOR SHALL VERIFY EXACT LOCATIONS IN FIELD PRIOR TO EXCAVATION. ANY UTILITIES DAMAGED DURING CONSTRUCTION SHALL BE REPAIRED BY THE CONTRACTOR OR UTILITY COMPANY, AT THE CONTRACTOR'S EXPENSE. TO THE SATISFACTION OF THE UTILITY COMPANY.
 - UTILITY FORCES MAY ENGAGE IN MOVING, RECONSTRUCTING OR INSTALLING, OR MAINTAINING UTILITY FACILITIES, AND THE CONTRACTOR SHALL COOPERATE WITH THESE FORCES AND CONDUCT OPERATIONS IN SUCH A MANNER AS TO AVOID ANY DELAY TO WORK BEING PERFORMED BY OTHER FORCES. THE CONTRACTOR SHALL JOIN HIS WORK WITH THE WORK OF THE OTHERS AND PERFORM THE WORK IN PROPER SEQUENCE AND WITH JUDICIOUS HANDLING OF FORCES AND EQUIPMENT.
 - SURVEYING AND CONSTRUCTION STAKING FOR SEWER AND WATER MAIN CONSTRUCTION WILL BE PERFORMED BY THE CITY OF LEWISTON. CONTRACTOR SHALL RETURN AND PROTECT CONSTRUCTION STAKING, AND SHALL NOTIFY THE ENGINEER OF ANY ERRORS.
 - SHOULD ADD ALTERNATE D BE AWARDED, ALL INSTALLATION WORK WITHIN THE ROADWAY LIMITS SHALL BE COMPLETED PRIOR TO CONSTRUCTION OF THE MAINTENANCE OVERLAY.
 - THE NEW WATER MAIN SHALL BE CONSTRUCTED IN THE SEQUENCE INDICATED BY THE PLANS UNLESS OTHERWISE DIRECTED. ALL TRENCHES AND EXCAVATED AREAS SHALL BE BACKFILLED TO FINISH GRADE WITH CRUSHED AGGREGATE BACKFILL IN ACCORDANCE WITH SECTION 202 OF THE SPECIFICATIONS. EXCESS AGGREGATE SHALL BE REMOVED PRIOR TO PAVEMENT REPLACEMENT.
 - ALL WATER MAINS SHALL BE INSTALLED WITH A MINIMUM HORIZONTAL SEPARATION OF 10' BETWEEN THE WATER MAIN AND SANITARY OR STORM SEWER MAIN AND IN COMPLIANCE WITH CITY OF LEWISTON STANDARD DRAWING W-9.
 - AT ALL WATER/SEWER MAIN CROSSINGS, WATER MAINS SHALL BE CONSTRUCTED TO PROVIDE A MINIMUM 18" VERTICAL SEPARATION BETWEEN THE OUTSIDE OF THE WATER MAIN AND OUTSIDE OF THE SANITARY OR STORM SEWER MAIN. THE WATER MAIN SHALL BE INSTALLED WITH A MINIMUM 20" LENGTH WATER CLASS PIPE ENCASEMENT AT THE SEWER LINE CROSSING.
 - THRUST BLOCKS SHALL BE INSTALLED AT ALL FITTING LOCATIONS AS SPECIFIED ON CITY STANDARD DRAWING W-2. THRUST BLOCKS SHALL BE CONSTRUCTED TO SIZES BASED ON ALLOWABLE SOIL STRESS OF 1000 PSI.
 - REMOVAL OF CURB FOR HYDRANT INSTALLATION IS INCIDENTAL TO THAT ITEM. PAY LENGTH FOR REPLACEMENT OF CURB AND GUTTER OVER HYDRANT LEADS SHALL BE AS INDICATED OR DIRECTED BY THE ENGINEER. WHEN WATER SERVICES ARE REQUIRED BENEATH EXISTING CURBS, THE CONTRACTOR SHALL PRESERVE AND PROTECT EXISTING CURBS.
 - THE CONTRACTOR SHALL PRESSURE TEST THE NEW WATER MAIN IN ACCORDANCE WITH THE SPECIFICATIONS AND AWWA C600. EXCEPT AS REQUIRED IN THE SPECIFICATIONS, THE CONTRACTOR WILL NOT BE REQUIRED TO DISINFECT NEW WATER MAINS. THE WATER DEPARTMENT WILL THEN PERFORM SYSTEM DISINFECTION.
 - CONNECTION OF EXISTING WATER SERVICE LINES SHALL BE PERFORMED IN ACCORDANCE WITH DETAIL (Symbol).
 - THE EXISTING WATER LINE SHALL BE KEPT IN SERVICE UNTIL ALL WATER SERVICE CONNECTIONS ARE INSTALLED ON THE NEW WATER MAIN.
 - ALL DISTURBED AREAS SHALL BE RESTORED TO THEIR ORIGINAL CONDITION. RESTORATION OF PAVEMENT, SIDEWALK, CURB, AND GUTTER SHALL BE IN CONFORMANCE WITH THE PROVISIONS OF SECTION 201 OF THE SPECIFICATIONS. RESTORATION OF ALL OTHER SURFACES SHALL BE CONSIDERED INCIDENTAL TO THE PROJECT.



CITY OF LEWISTON
 PUBLIC WORKS DEPARTMENT
 ENGINEERING SERVICES
 134 W 9TH STREET LEWISTON, ID 83801
 (208) 748-3671 FAX (208) 746-9007



SITE PLAN
 ADD ALTERNATE D
 Country Club Drive
 Water Main Replacement

REVISIONS

NO.	DATE	REVISION	BY

DESIGNED BY: S.M.
CHECKED BY: J.M.
DATE: May 2003
DRAWING NO.: SWP PLAN
SHEET 1 OF 7



Constructed

Constructed