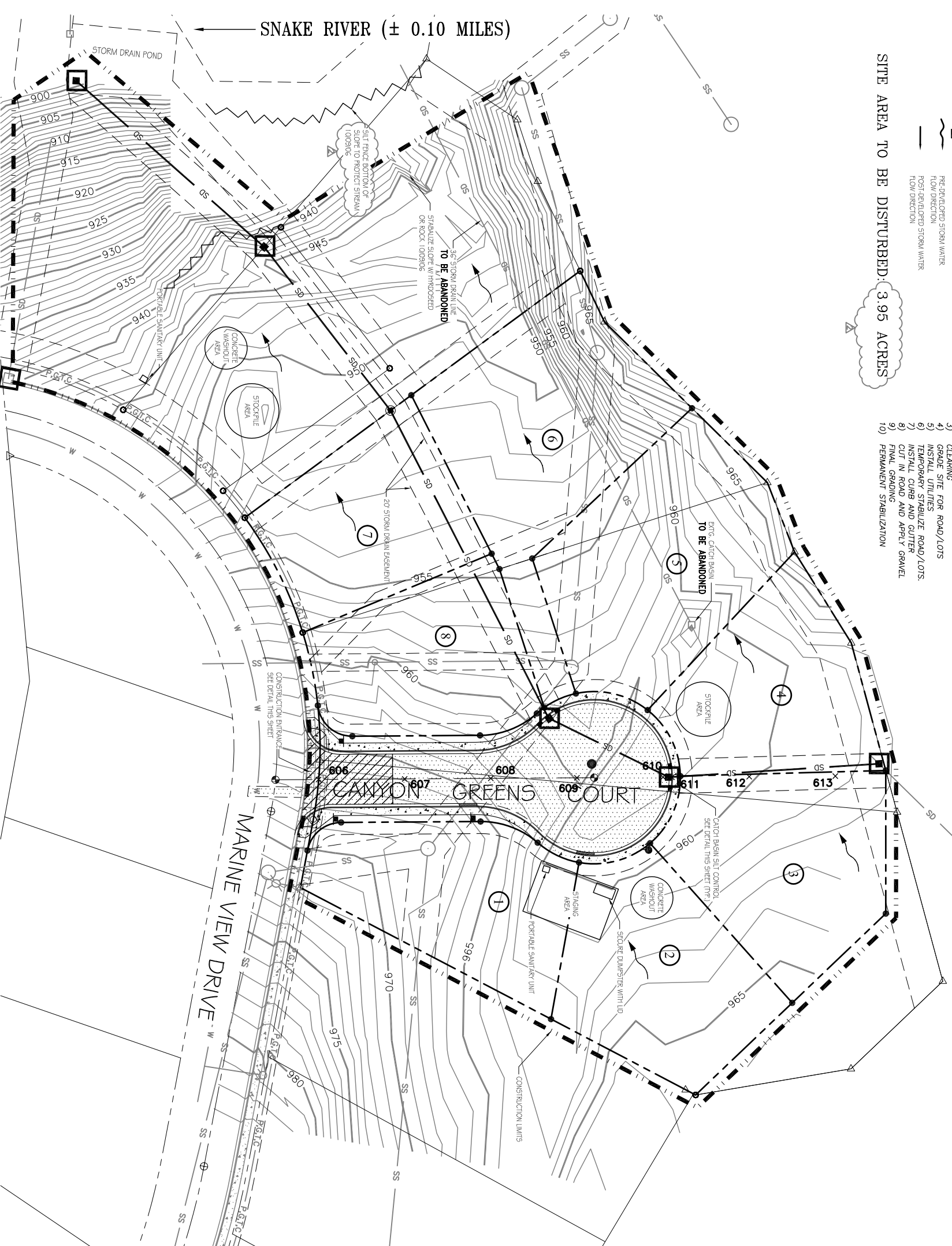


- LEGEND:**
- PROPERTY LINE
 - - - LIMITS OF CLEARING AND GRADING
 - PROPOSED INLET
 - PRE-DEVELOPED STORM WATER
 - FROM DEVELOPED STORM WATER
 - FLOW DIRECTION

SITE AREA TO BE DISTURBED: 3.95 ACRES

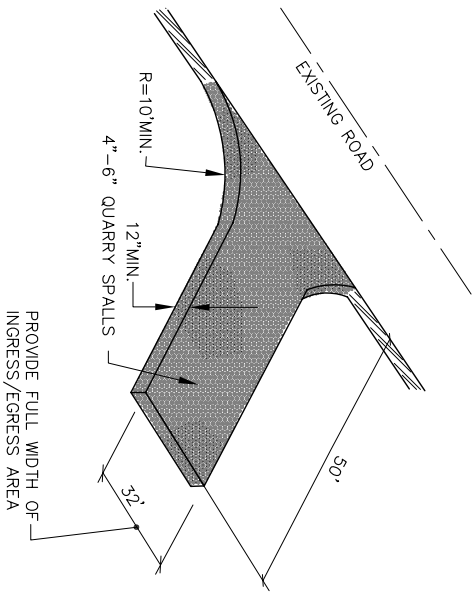
SEQUENCE OF WORK:

- 1) INSTALL STABILIZED CONSTRUCTION ENTRANCE MEASURES
- 2) INSTALL OTHER EROSION CONTROL/SEDIMENT CONTROL MEASURES
- 3) CLEARING
- 4) GRADE SITE FOR ROAD/LOTS
- 5) INSTALL UTILITIES
- 6) TEMPORARY STABILIZE ROAD/LOTS
- 7) INSTALL CURB AND GUTTER
- 8) CUT IN ROAD AND APPLY GRAVEL
- 9) FINAL GRADING
- 10) PERMANENT STABILIZATION

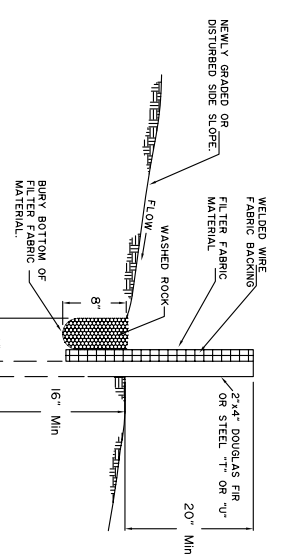


EROSION CONTROL NOTES:

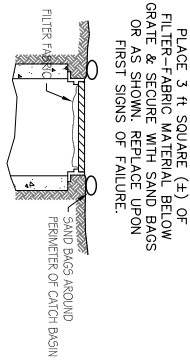
- 1) APPROVAL OF THE EROSION CONTROL ELEMENT DOES NOT CONSTITUTE AN APPROVAL OF PERMANENT ROAD OR DRAINAGE DESIGN.
- 2) IMPLEMENTATION, CONSTRUCTION, MAINTENANCE, REPLACEMENT AND UPGRADING OF ALL EROSION CONTROL MEASURES IS THE RESPONSIBILITY OF THE CONTRACTOR UNTIL ALL CONSTRUCTION IS COMPLETED AND APPROVED AND ALL VEGETATION/LANDSCAPING IS ESTABLISHED.
- 3) THE EROSION CONTROL FACILITIES ON THIS PLAN MUST BE CONSTRUCTED IN CONJUNCTION WITH ALL CLEARING AND GRADING ACTIVITIES TO ENSURE THAT SEDIMENT-LOADED WATER DOES NOT ENTER THE DRAINAGE SYSTEM OR VIOLATE APPLICABLE WATER STANDARDS.
- 4) ALL EROSION CONTROL FACILITIES SHALL BE INSPECTED DAILY BY THE CONTRACTOR AND MAINTAINED AS NECESSARY TO ENSURE THEIR CONTINUED FUNCTIONING.
- 5) DURING INACTIVE PERIODS ON THE SITE, THE CONTRACTOR MUST INSPECT AND MAINTAIN EROSION CONTROL FACILITIES ONCE A MONTH OF WITHIN 48 HOURS FOLLOWING A STORM EVENT.
- 6) FILTER FABRIC SHALL BE PLACED UNDER THE GRATES OF NEWLY INSTALLED CATCH BASINS UNTIL PAVING OPERATIONS ARE COMPLETE. ALL CATCH BASINS AND CONFORMANCE LINES SHALL BE CLEANED PRIOR TO PAVING. THE CLEANING OPERATION SHALL NOT FLUSH SEDIMENT LOADED WATER INTO THE DOWNSTREAM SYSTEM.
- 7) STABILIZED CONSTRUCTION ENTRANCES SHALL BE INSTALLED AT THE BEGINNING OF CONSTRUCTION AND SHALL BE MAINTAINED FOR THE DURATION OF THE PROJECT. ADDITIONAL MEASURES MUST BE TAKEN BY THE CONTRACTOR, IF NECESSARY, TO ENSURE THAT ALL EXISTING PAVED AREAS ARE KEPT CLEAN FOR THE DURATION OF THE PROJECT.
- 8) SEED, MULCH, AND FERTILIZE ALL DISTURBED GROUND NOT RECEIVING HARD SURFACE AT THE EARLIEST POSSIBLE TIME. USE SEED MIXES AND RATES AS PER LANDSCAPE DESIGNER.
- 9) EROSION AND DUST CONTROL MEASURES MUST BE USED DURING CONSTRUCTION TO REDUCE OR ELIMINATE BLOWING DUST, EXCESSIVE RUMPLE, AND SOIL EROSION ACROSS PROPERTY LINES AND INTO STREETS AND RIGHT-OF-WAY, AND TO ELIMINATE TRACKING SOIL AND MUD ONTO STREETS FROM CONSTRUCTION EQUIPMENT AND VEHICLES.
- 10) ALL ENTRANCES NOT PROTECTED WITH A CONSTRUCTION ENTRANCE FEATURE SHALL BE BLOCKED.
- 11) MATERIAL TRACKED ONTO THE ROADWAY CANNOT BE WASHED INTO THE STORM SYSTEM.
- 12) STREETS SHALL BE SWEEP PRIOR TO A STORM EVENT OR AT THE REQUEST OF THE ENGINEER OR THE CITY.



STABILIZED CONSTRUCTION ENTRANCE
NO SCALE

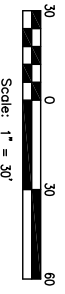


SILT FENCE DETAIL
N/S



SILT CONTROL AT C.B.'S
N/S

EROSION CONTROL PLAN



KELTIC ENGINEERING, Inc.
 315 Adams Lane ◊ Lewiston, Idaho 83501 ◊ (208) 743-2135 ◊ (208) 743-2136 fax
 1621 N Third Street, Ste 500 ◊ Cour d'Alene, Idaho 83814 ◊ (208) 664-4836 ◊ (208) 664-4893 fax
 ◊ Development ◊ Planning ◊ Design ◊ Construction Management

EROSION CONTROL PLAN
JOHN BLOCK
 112 MARINE VIEW COURT
 LEWISTON, ID 83501

No.	DATE	BY	DESCRIPTION
1	06/22/06	RGW	CITY REVIEW COMMENTS PER PLAN REVIEW #U06-000039
2	10/09/06	MAC	INCREASE SITE AREA AND SILT FENCE RELOCATION

PROFESSIONAL ENGINEER
 REG. NO. 6064
 STATE OF IDAHO
 DATE: 03-24-06
 DRAWN BY: RGW
 CHECKED BY: ETT
 RESIGNED BY: RGW
 PROJECT NO.: 06-001
 LAST REV.: 10-09-06 (MAAC)
 SHEET NO. 4 OF 7