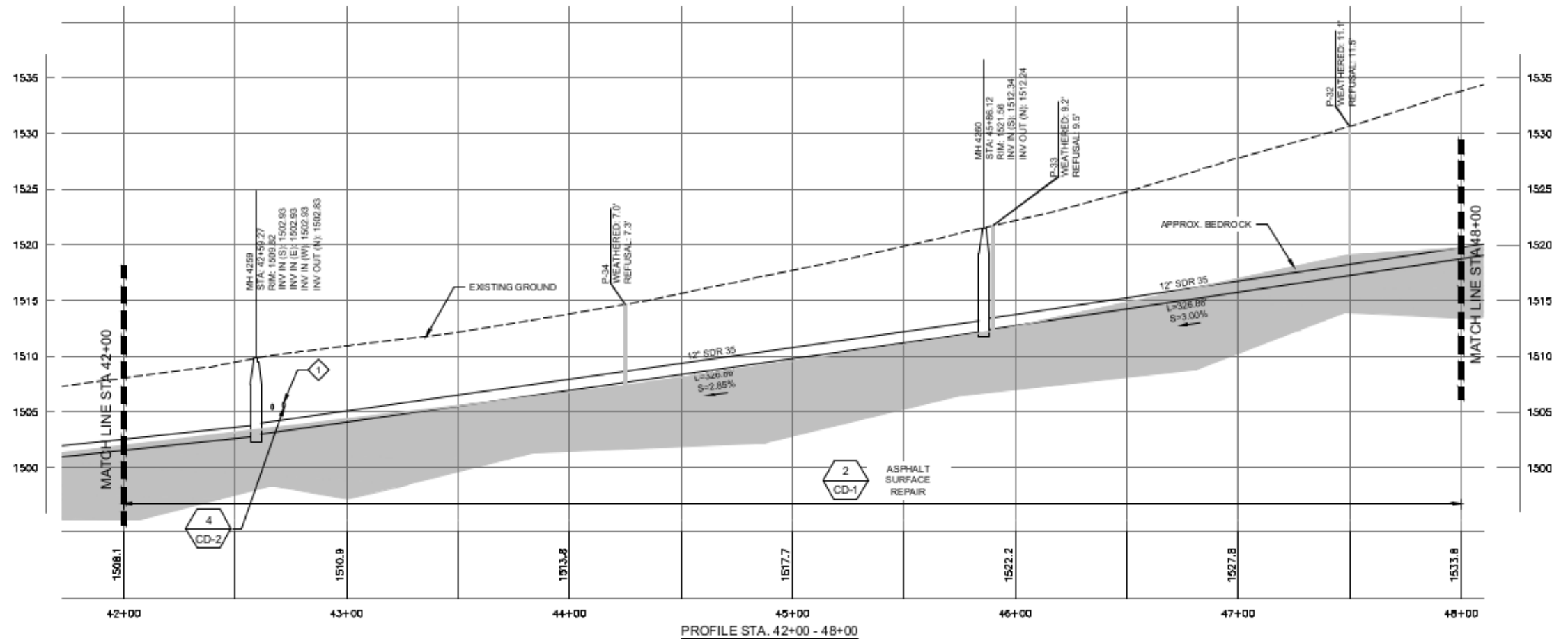
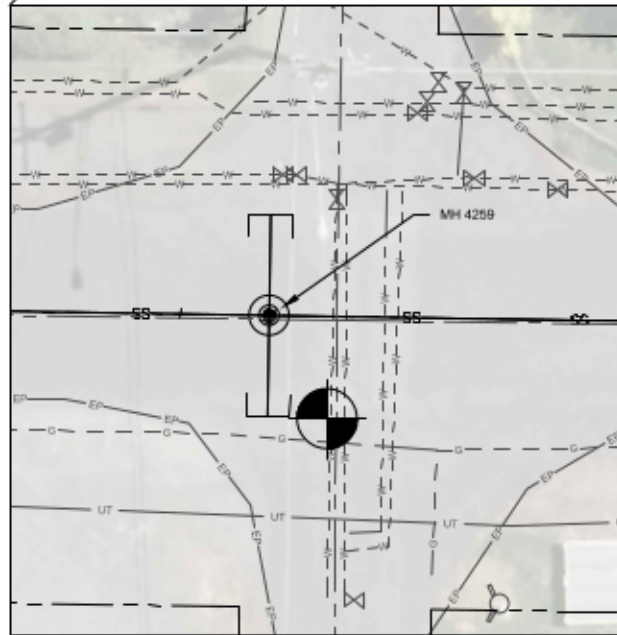
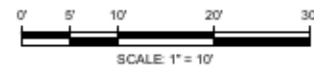
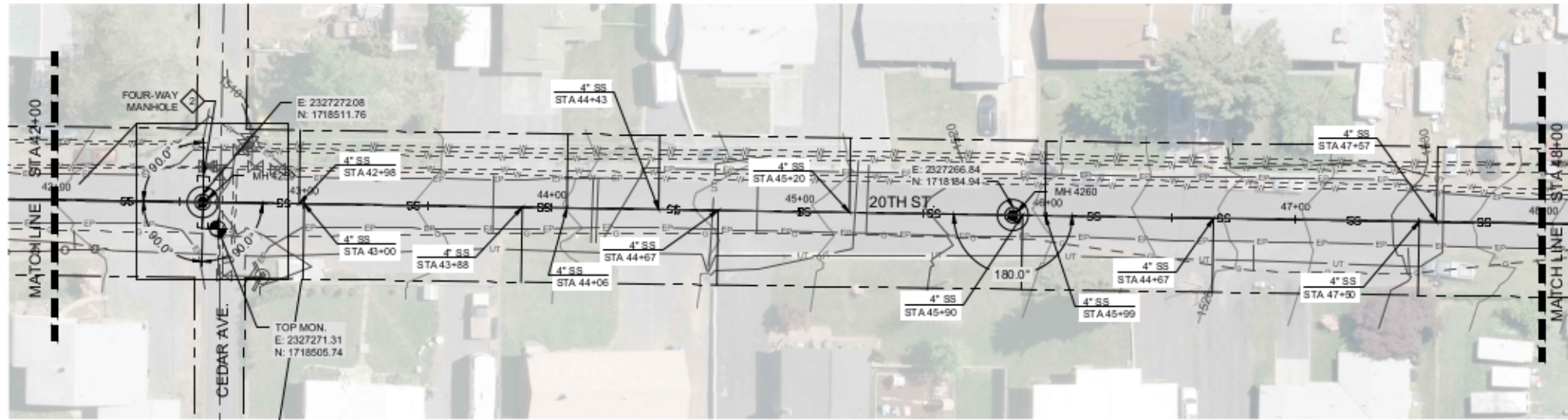
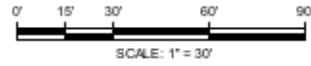




NORTH



HORIZ. SCALE: 1" = 30'  
VER. SCALE: 1" = 8'  
(VERIFY PER SHEET SIZE)

GENERAL NOTES:

- GRAVITY SEWER PIPE MATERIAL TYPE SHALL BE MINIMUM PVC SDR-35. PIPE DIAMETER TO BE 12-INCHES UNLESS OTHERWISE SHOWN.
- CONTRACTOR TO FIELD VERIFY ALL DIMENSIONS, LOCATIONS, AND ELEVATIONS BEFORE STARTING WORK AND PRIOR TO ORDERING MATERIAL.
- CONTRACTOR TO COMPLY WITH IDAPA 58.01.08.542.07 WHEN WATER MAINS AND POTABLE WATER SERVICE LINES ARE ENCOUNTERED DURING SEWER MAIN AND SERVICE TRENCHING ACTIVITIES.
- PROPERTY LINES SHOWN ON PLAN SHEETS ARE FOR INFORMATIONAL PURPOSES ONLY AND WERE COMPILED FROM VARIOUS SOURCES. IT IS NOT THE INTENT OF THESE DRAWINGS TO BE USED FOR LOCATION OF PROPERTY LINES. MOUNTAIN WATERWORKS ASSUMES NO LIABILITY FOR PROPERTY LINES WHICH MAY NOT BE ACCURATELY SHOWN.
- ALL MANHOLES ARE TO BE CONSTRUCTED IN ACCORDANCE WITH WASTEWATER MANHOLE TYPE 1 DETAIL 7 ON SHT CD-4 UNLESS OTHERWISE SHOWN.
- GEOTECHNICAL BORINGS SHOWN IN APPROXIMATE LOCATIONS FOR INFORMATIONAL PURPOSES.

KEY NOTES:

- 1 WATER MAIN UTILITY CROSSINGS (APPROX. DEPTHS).
- 2 PROVIDE PIPE STUB-OUTS FOR FUTURE LATERAL CONNECTIONS INTO MANHOLE IN ACCORDANCE WITH C999 ON SHT CD-8.

Path: E:\Projects\1-Lewis\1-181000\Phase 1\CD\CD-8\East Orchards Sewer Expansion.dwg File Name: AB\_Lewis\East Orchards Sewer Expansion.dwg Plot Date: 11/19/2019 9:55:03 AM Dwg No:

NO.	REVISION	BY	DATE	DESIGN
				LCH
				DRAWN
				OTW
				CHECKED
				LMD
				APPROVED



RECORD DRAWING

THESE RECORD DRAWINGS HAVE BEEN PREPARED BASED IN PART ON INFORMATION PROVIDED BY OTHERS

THIS DRAWING WAS PREPARED ONLY FOR THE PROJECT AND SITE SPECIFICALLY IDENTIFIED HEREON AND IS NOT TO BE USED ELSEWHERE



ENGINEERING AND ENVIRONMENTAL SOLUTIONS

111 MAIN ST. SUITE 175  
LEWISTON, IDAHO 83501  
208.780.3990

IDAHO OFFICES  
BOISE · LEWISTON · COEUR D'ALENE

EAST ORCHARDS SEWER EXPANSION

LEWISTON, IDAHO

STA 42+00 - 48+00

VERIFY SCALE	
BARS ONE INCH ON FULL SIZE DRAWING	1"
PROJECT:	181.0020
DATE:	11/19/2019
DRAWING NO.	C-6