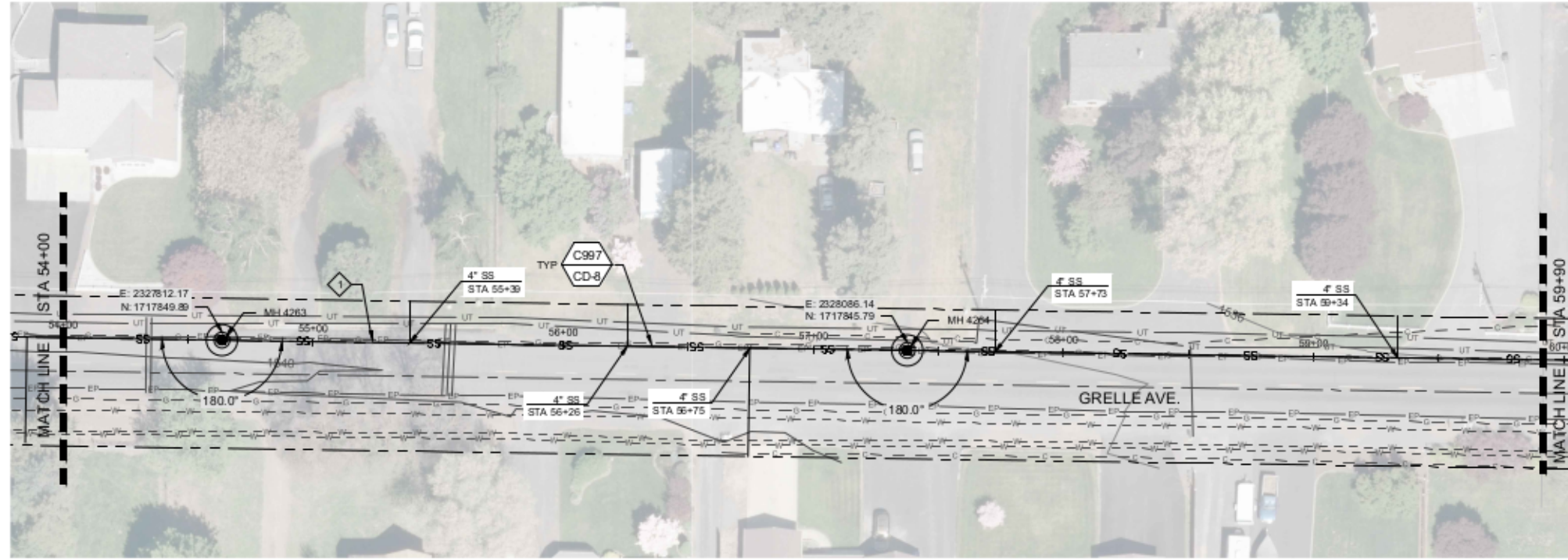
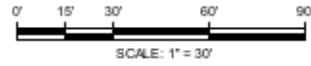




NORTH

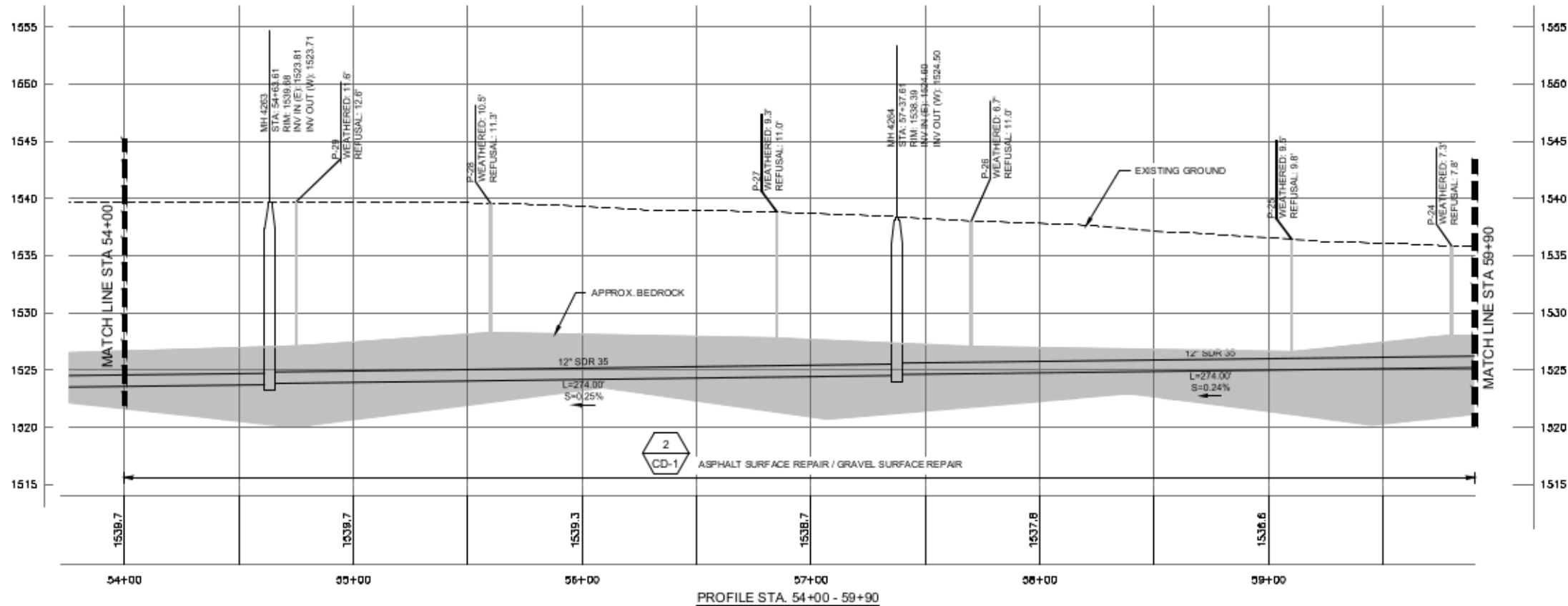


GENERAL NOTES:

1. GRAVITY SEWER PIPE MATERIAL TYPE SHALL BE MINIMUM PVC SDR-35. PIPE DIAMETER TO BE 12-INCHES UNLESS OTHERWISE SHOWN.
2. CONTRACTOR TO FIELD VERIFY ALL DIMENSIONS, LOCATIONS, AND ELEVATIONS BEFORE STARTING WORK AND PRIOR TO ORDERING MATERIAL.
3. CONTRACTOR TO COMPLY WITH IDAPA 58.01.08.542.07 WHEN WATER MAINS AND POTABLE WATER SERVICE LINES ARE ENCOUNTERED DURING SEWER MAIN AND SERVICE TRENCHING ACTIVITIES.
4. PROPERTY LINES SHOWN ON PLAN SHEETS ARE FOR INFORMATIONAL PURPOSES ONLY AND WERE COMPILED FROM VARIOUS SOURCES. IT IS NOT THE INTENT OF THESE DRAWINGS TO BE USED FOR LOCATION OF PROPERTY LINES. MOUNTAIN WATERWORKS ASSUMES NO LIABILITY FOR PROPERTY LINES WHICH MAY NOT BE ACCURATELY SHOWN.
5. ALL MANHOLES ARE TO BE CONSTRUCTED IN ACCORDANCE WITH WASTEWATER MANHOLE TYPE 1 DETAIL 7 ON SHT CD-4 UNLESS OTHERWISE SHOWN.
6. GEOTECHNICAL BORINGS SHOWN IN APPROXIMATE LOCATIONS FOR INFORMATIONAL PURPOSES.

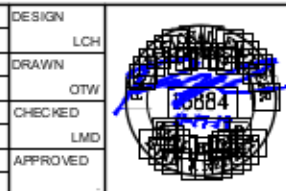
KEY NOTES:

- ◇ GAS MAIN TO BE RELOCATED BY UTILITY COMPANY PRIOR TO CONSTRUCTION.



HORIZ. SCALE: 1" = 30'
 VER. SCALE: 1" = 8'
 (VERIFY PER SHEET SIZE)

NO.	REVISION	BY	DATE	DESIGN



RECORD DRAWING
 THESE RECORD DRAWINGS HAVE BEEN PREPARED BASED IN PART ON INFORMATION PROVIDED BY OTHERS
 THIS DRAWING WAS PREPARED ONLY FOR THE PROJECT AND SITE SPECIFICALLY IDENTIFIED HEREON AND IS NOT TO BE USED ELSEWHERE

ENGINEERING AND ENVIRONMENTAL SOLUTIONS
 111 MAIN ST. SUITE 175
 LEWISTON, IDAHO 83501
 208.780.3990
 IDAHO OFFICES
 BOISE · LEWISTON · COEUR D'ALENE

EAST ORCHARDS SEWER EXPANSION
 LEWISTON, IDAHO
 STA 54+00 - 59+90

VERIFY SCALE	
BARS ONE INCH ON FULL SIZE DRAWING	1"
PROJECT :	181.0020
DATE :	11/19/2019
DRAWING NO.	C-8