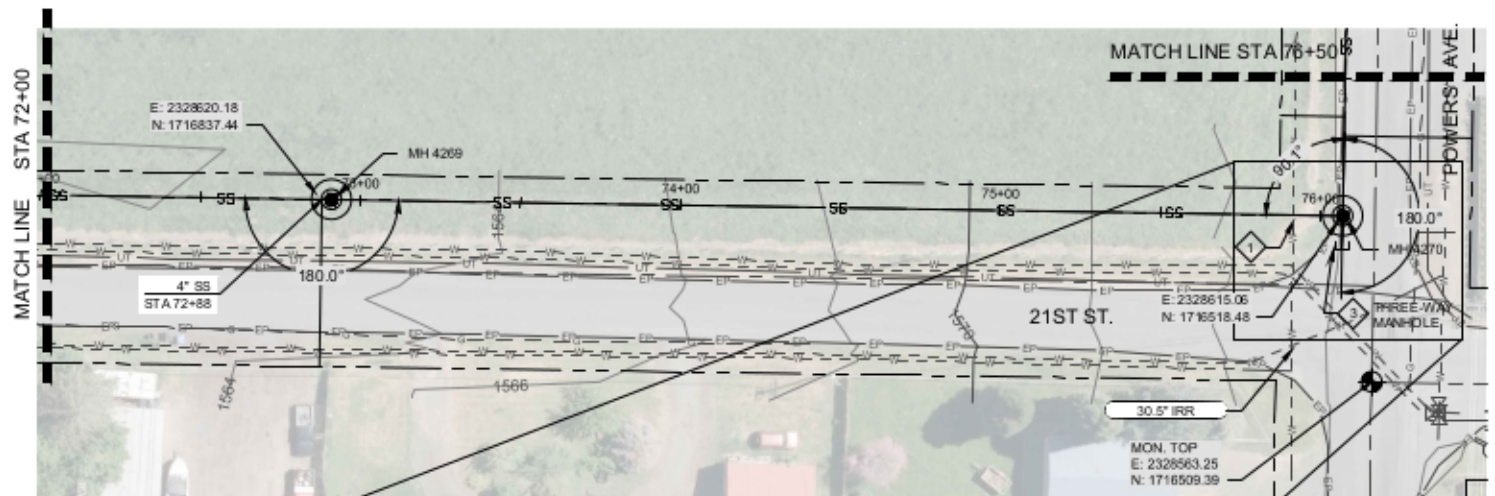
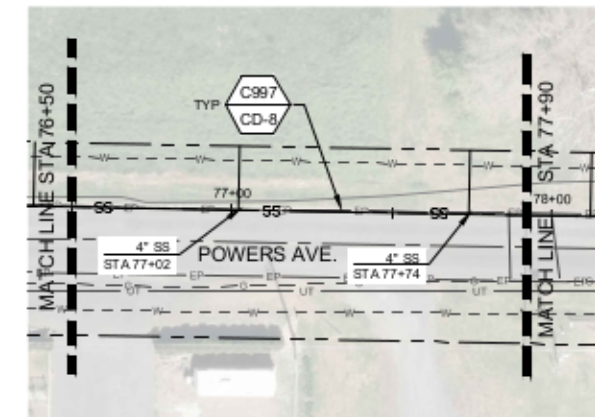


NORTH



NORTH

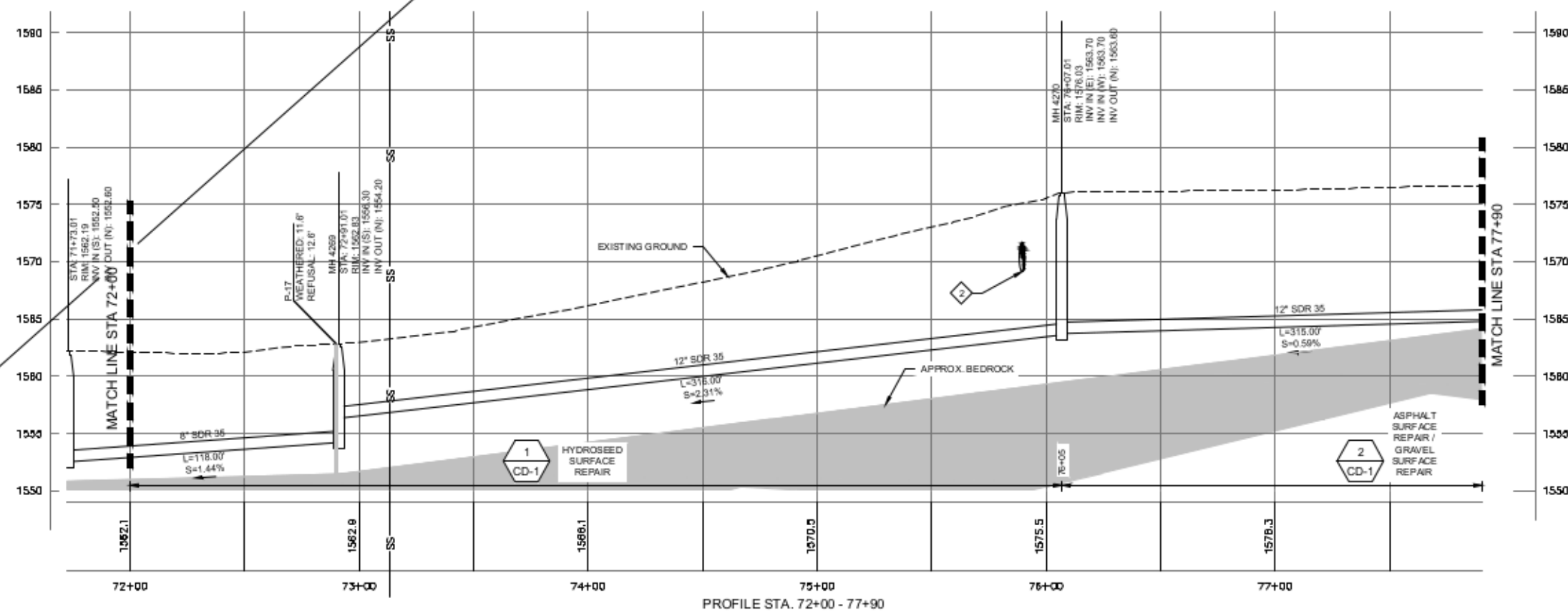
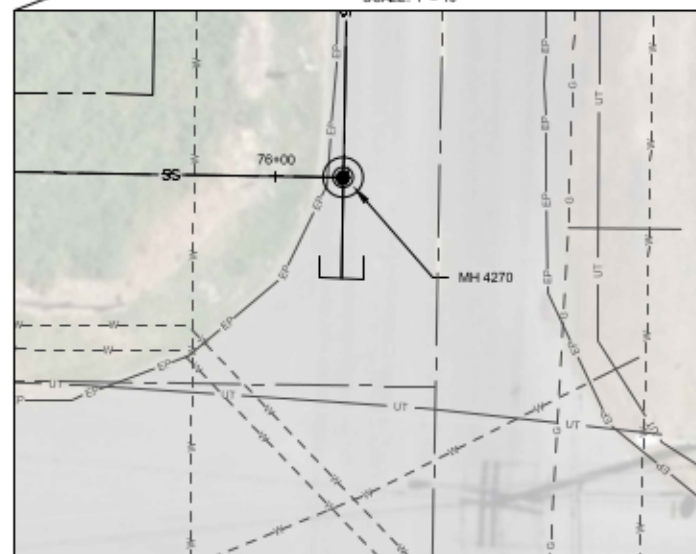


GENERAL NOTES:

- GRAVITY SEWER PIPE MATERIAL TYPE SHALL BE MINIMUM PVC SDR-35. PIPE DIAMETER TO BE 12-INCHES UNLESS OTHERWISE SHOWN.
- CONTRACTOR TO FIELD VERIFY ALL DIMENSIONS, LOCATIONS, AND ELEVATIONS BEFORE STARTING WORK AND PRIOR TO ORDERING MATERIAL.
- CONTRACTOR TO COMPLY WITH IDAPA 58.01.08.542.07 WHEN WATER MAINS AND POTABLE WATER SERVICE LINES ARE ENCOUNTERED DURING SEWER MAIN AND SERVICE TRENCHING ACTIVITIES.
- PROPERTY LINES SHOWN ON PLAN SHEETS ARE FOR INFORMATIONAL PURPOSES ONLY AND WERE COMPILED FROM VARIOUS SOURCES. IT IS NOT THE INTENT OF THESE DRAWINGS TO BE USED FOR LOCATION OF PROPERTY LINES. MOUNTAIN WATERWORKS ASSUMES NO LIABILITY FOR PROPERTY LINES WHICH MAY NOT BE ACCURATELY SHOWN.
- ALL MANHOLES ARE TO BE CONSTRUCTED IN ACCORDANCE WITH WASTEWATER MANHOLE TYPE 1 DETAIL 7 ON SHT CD-4 UNLESS OTHERWISE SHOWN.
- GEOTECHNICAL BORINGS SHOWN IN APPROXIMATE LOCATIONS FOR INFORMATIONAL PURPOSES.

KEY NOTES:

- EXISTING WATER LINE IS NON-POTABLE 30.5-INCH EPOXY COATED STEEL. CONTRACTOR TO COORDINATE WITH LOID BEFORE PERFORMING WORK WITHIN APPROXIMATELY 5- FEET OF WATER LINE CROSSING. CONTACT CHRIS WOODY, 208.790.2287.
- IF THE EPOXY COATING IS DAMAGED NOTIFY LOID AND MAKE THE APPROPRIATE REPAIRS. CONTRACTOR SHALL REQUEST AN INSPECTION FROM LOID PRIOR TO BACKFILL. IF THE 30.5-INCH PIPE IS DAMAGED IN ANYWAY THE CONTRACTOR SHALL PAY FOR THE NECESSARY REPAIRS, AS DETERMINED BY THE ENGINEER.
- WATER MAIN CROSSING.
- PROVIDE PIPE STUB-OUTS FOR FUTURE LATERAL CONNECTIONS INTO MANHOLES IN ACCORDANCE WITH C999 ON SHT CD-8.



HORIZ SCALE: 1" = 30'
VER. SCALE: 1" = 8'
(VERIFY PER SHEET SIZE)

NO.	REVISION	BY	DATE	DESIGN
				LCH
				DRAWN
				OTW
				CHECKED
				LMD
				APPROVED



RECORD DRAWING

THESE RECORD DRAWINGS HAVE BEEN PREPARED BASED IN PART ON INFORMATION PROVIDED BY OTHERS

THIS DRAWING WAS PREPARED ONLY FOR THE PROJECT AND SITE SPECIFICALLY IDENTIFIED HEREON AND IS NOT TO BE USED ELSEWHERE



ENGINEERING AND ENVIRONMENTAL SOLUTIONS

111 MAIN ST. SUITE 175
LEWISTON, IDAHO 83501
208.780.3990

IDAHO OFFICES
BOISE · LEWISTON · COEUR D'ALENE

EAST ORCHARDS SEWER EXPANSION
LEWISTON, IDAHO

STA 72+00 - 77+90

VERIFY SCALE	
BARS ONE INCH ON FULL SIZE DRAWING	1"
PROJECT:	181.0020
DATE:	11/19/2019
DRAWING NO.	C-11

Path: E:\Projects\1-Lewiston - 1810020\Phase 1\CD\CD-11\Plan CD-11.dwg File Name: AB1 Lewiston Profile.dwg Plot Date: 11/20/2019 9:58:05 AM Dwg