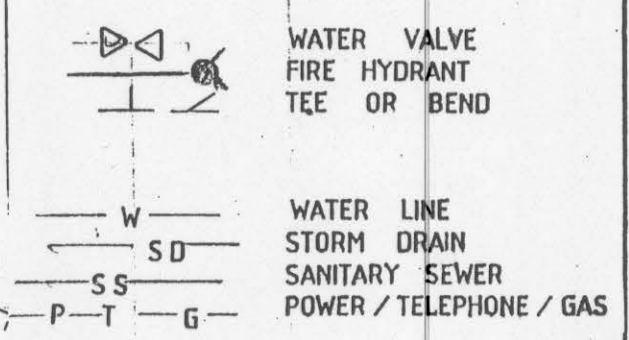


WATER LINE LEGEND



LEGEND

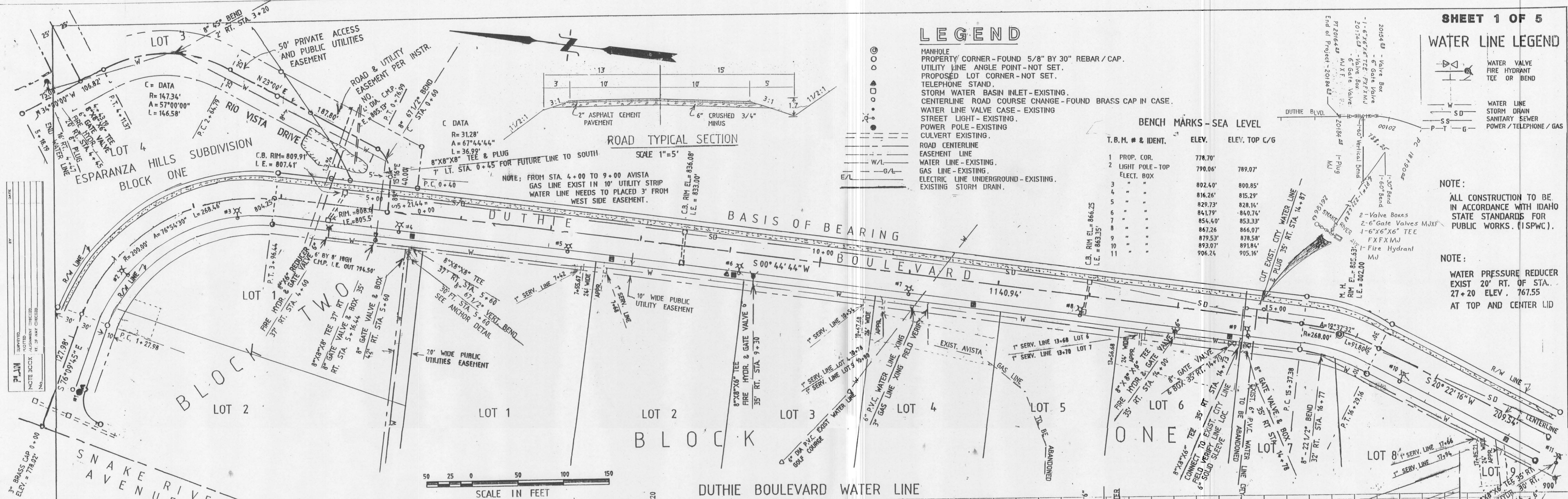
MANHOLE PROPERTY CORNER - FOUND 5/8" BY 30" REBAR / CAP.
 UTILITY LINE ANGLE POINT - NOT SET.
 PROPOSED LOT CORNER - NOT SET.
 TELEPHONE STAND.
 STORM WATER BASIN INLET - EXISTING.
 CENTERLINE ROAD COURSE CHANGE - FOUND BRASS CAP IN CASE.
 WATER LINE VALVE CASE - EXISTING
 STREET LIGHT - EXISTING.
 POWER POLE - EXISTING
 CULVERT EXISTING.
 ROAD CENTERLINE
 EASEMENT LINE
 WATER LINE - EXISTING.
 GAS LINE - EXISTING.
 ELECTRIC LINE UNDERGROUND - EXISTING.
 EXISTING STORM DRAIN.

BENCH MARKS - SEA LEVEL

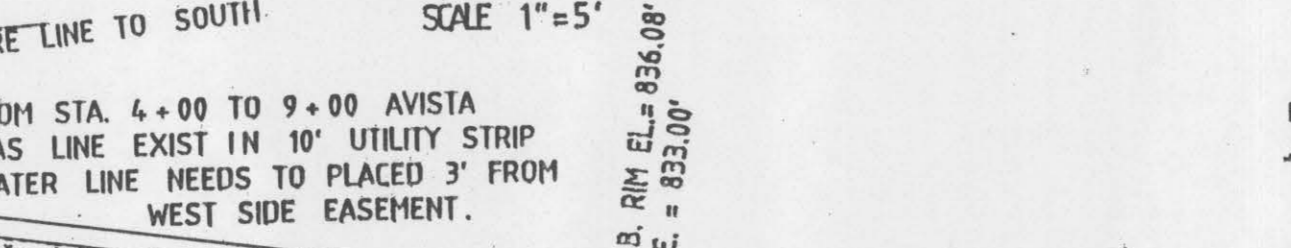
T.B.M. # & IDENT.	ELEV.	ELEV. TOP C/G
1 PROP. COR.	778.70'	
2 LIGHT POLE - TOP ELECT. BOX	790.06'	789.07'
3	802.40'	800.85'
4	816.26'	815.29'
5	829.73'	828.14'
6	841.79'	840.74'
7	854.40'	853.33'
8	867.26'	866.07'
9	879.53'	878.58'
10	893.07'	891.84'
11	906.24'	905.16'

NOTE:
 ALL CONSTRUCTION TO BE IN ACCORDANCE WITH IDAHO STATE STANDARDS FOR PUBLIC WORKS. (ISPW).

NOTE:
 WATER PRESSURE REDUCER EXIST 20' RT. OF STA. 27+20 ELEV. 767.55 AT TOP AND CENTER LID

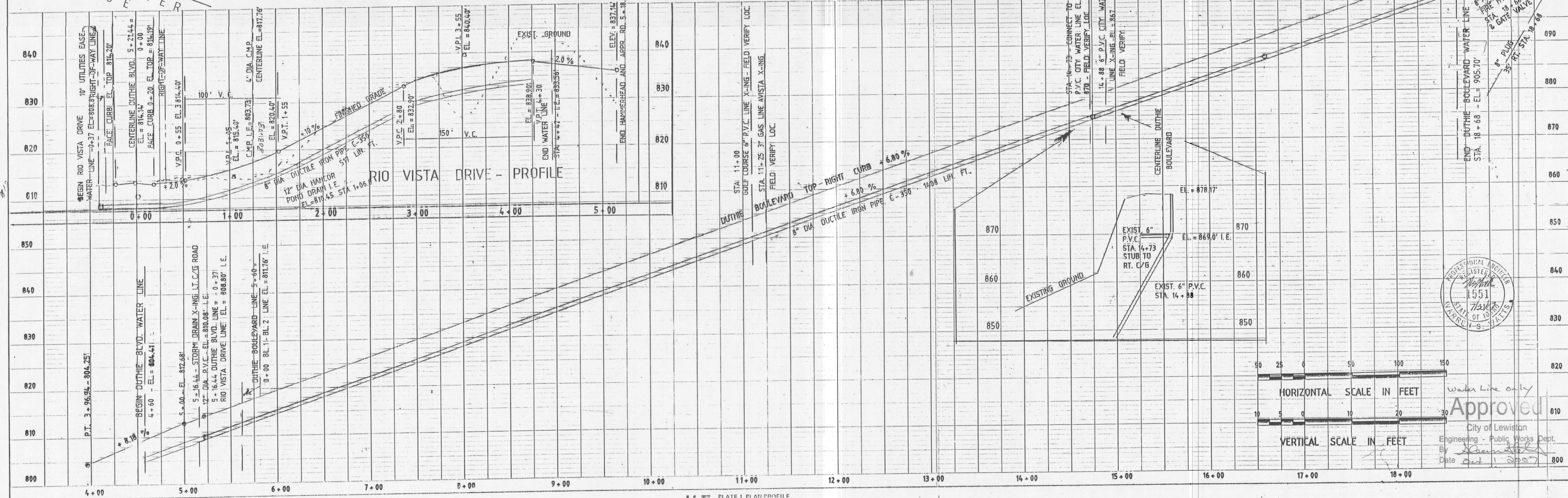


ROAD TYPICAL SECTION



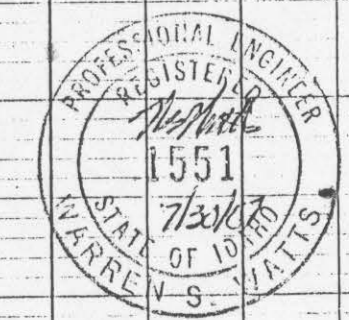
SCALE IN FEET

DUTHIE BOULEVARD WATER LINE



HORIZONTAL SCALE IN FEET

VERTICAL SCALE IN FEET



Approved
 City of Lewiston
 Engineering - Public Works Dept.
 By [Signature]
 Date Oct 1 2007