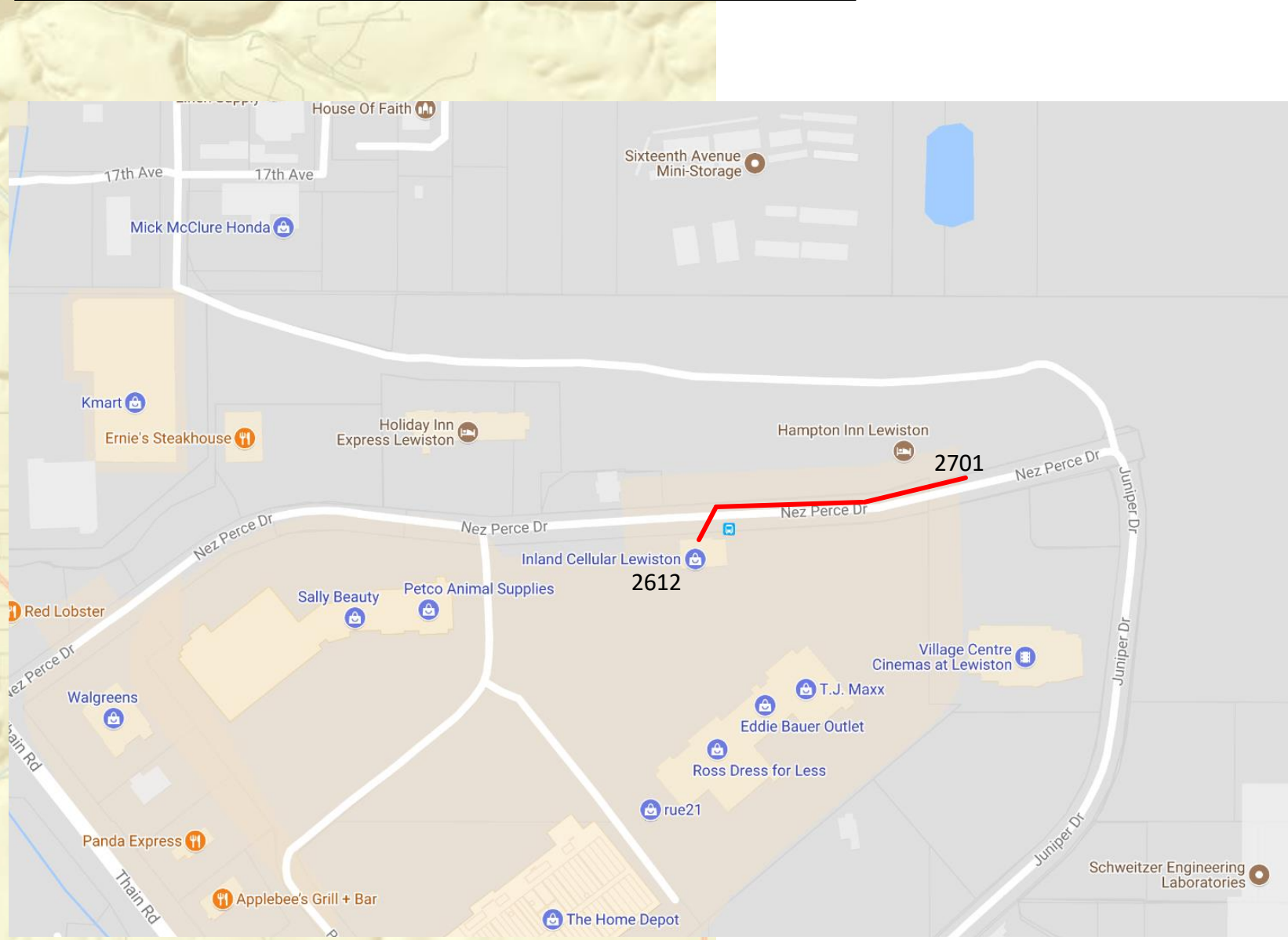
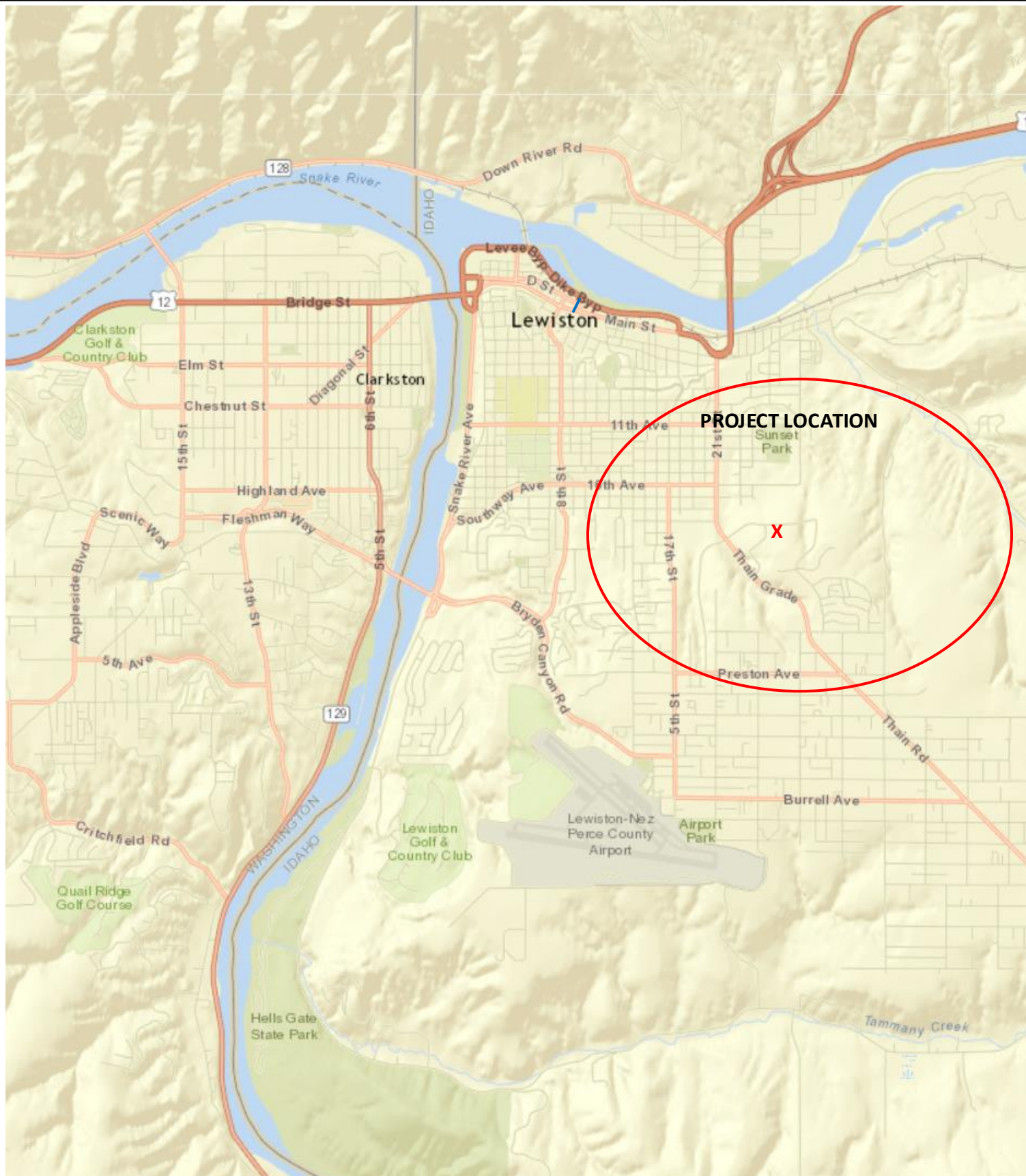


PROJECT BEGINS AT EXISTING POL HH AT 2701 NEZ PERCE DRIVE.
 PULL F/O CABLE IN EXISTING POL CONDUIT ON NORTH SIDE OF NEZ PERCE DR.
 PLACE NEW HH AT CONDUIT SWEEPS 464' WEST OF EXISTING HH. PLACE NEW
 1 1/4" CONDUIT USING DIRECTIONAL DRILL ACROSS NEZ PERCE DRIVE TO INLAND
 CELLULAR AT 2612 NEZ PERCE DR. LEAVE 50' F/O CABLE SLACK IN HH
 PULL F/O CABLE THROUGH NEW CONDUIT INTO BUILDING.



Drawing Name: Port of Lewiston

Drawn By: Ron Glessner 08-12-18

2612 NEZ PERCE DRIVE

SIZE	FSCM NO	DWG NO	REV
SCALE		SHEET 1	

REV.	DESCRIPTION	DATE	BY

Contact Information
 Port of Lewiston
 Dave Doeringsfeld
 208-743-5531
 Outside Plant Maintenance, LLC
 Ron Glessner 208-661-5648

State: ID
 County: Nez Perce
 City: Lewiston
 Section:
 Township:
 Range:
 Legal:



GENERAL CONSTRUCTION NOTES

CONTRACTOR IS RESPONSIBLE FOR ALL PERMITS EXCEPT STATE HWY., COUNTY ROAD,RAILROAD OR WATER CROSSINGS.

RESTORATION OF ALL RIGHT OF WAY GROUND WILL BE RESTORED TO ORIGINAL CONDITION OR BETTER.

CONTRACTOR WILL COORDINATE WITH OSP MANAGER 24 HRS. PRIOR TO BEGINNING CONSTRUCTION. CALL OSP MANAGER WHEN CONSTRUCTION IS COMPLETED. RON 208-661-5648

OSP MANAGER WILL CONTACT BUILDING OWNER/TENANT 24 HRS. PRIOR TO BEGINNING CONSTRUCTION TO COORDINATE ACCESS TO BUILDINGS.

CONTRACTOR IS RESPONSIBLE FOR CALLING LOCATES AND IS RESPONSIBLE FOR REPAIR AND RESTORATION OF DAMAGED UTILITIES.

FOLLOW ALL NESC CONSTRUCTION GUIDELINES.

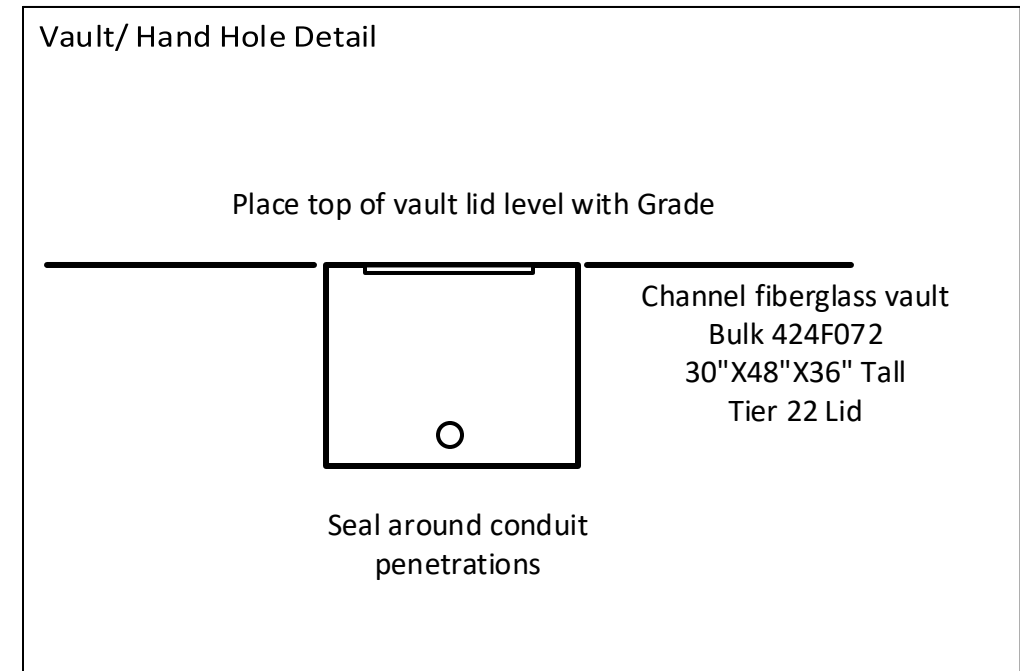
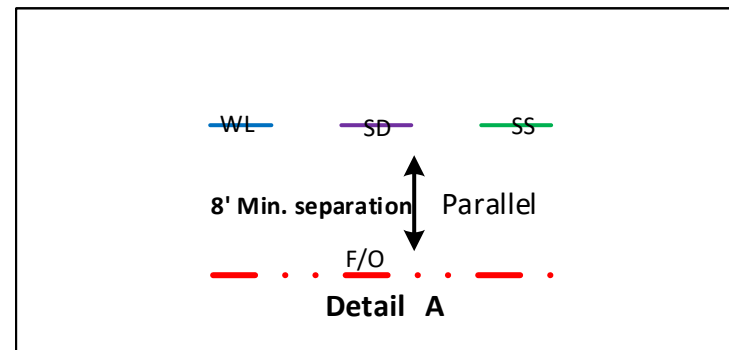
CONTRACTOR WILL HAVE ON SITE THE APPROVED DRAWINGS FROM THE UTILITY AND OR STATE,COUNTY,CITY,RAILROAD.

CONTRACTOR WILL PROVIDE CONDUIT , HAND HOLES , ANCHORS, AERIAL HARDWARE , LOCATE WIRE

PORT OF LEWISTON (POL) WILL PROVIDE , FIBER OPTIC CABLE , AERIAL MARKERS , AND LINE ROUTE MARKERS.

FIBER	CONSTRUCTION
0'	AERIAL 48 STRAND F.O.CABLE
775'	Buried 48 STRAND F.O.CABLE
201'	1 1/4" HDPE CONDUIT
0'	3" SCHEDULE 40 RISER
0	NEW ANCHOR
0	AERIAL MARKER
2	BURIED MARKER
0	PUPI ARM
0	EXTENSION ARM
1	NEW HAND HOLE

	CULVERT
	DIRECTIONAL BORE
	EXISTING CONDUIT
	BURIED CABLE
	NEW ANCHOR
	SIDEWALK ANCHOR
	EXISTING ANCHOR
	OVERHEAD GUY
	ATTACH TO POLE GROUND
	FIBER SLACK LOOP
	JOINT USE POLE
	CABLE CHANGE
	BURIED ROUTE MARKER
	EXISTING HAND HOLE
	NEW HAND HOLE



Drawing Name:Port of Lewiston		Drawn By:Ron Glessner 08-12-18				Contact Information				State:ID. County:Nez Perce City: Lewiston	
		2612 NEZ PERCE DRIVE				Port of Lewiston Dave Doeringsfeld 208-743-5531 Outside Plant Maintenance,Ilc Ron Glessner208-661-5648				Section: Township: Range: Legal:	
SIZE	FSCM NO	DWG NO		REV		REV.	DESCRIPTION	DATE	BY		
SCALE	No scale		SHEET 2			REV.	DESCRIPTION	DATE	BY		



POL PLACE NEW HH AT EXISTING CONDUIT SWEEPS
LEAVE 50' F/O SLACK LOOP
PLACE LOCATE ROUTE MARKER AT HH

PULL ONE(1) 48 STRAND ARMORED
SINGLE MODE FIBER OPTIC CABLE
INSIDE EXISTING POL CONDUIT
FROM EXISTING HH STA. 00+00

14836 E
14912 S

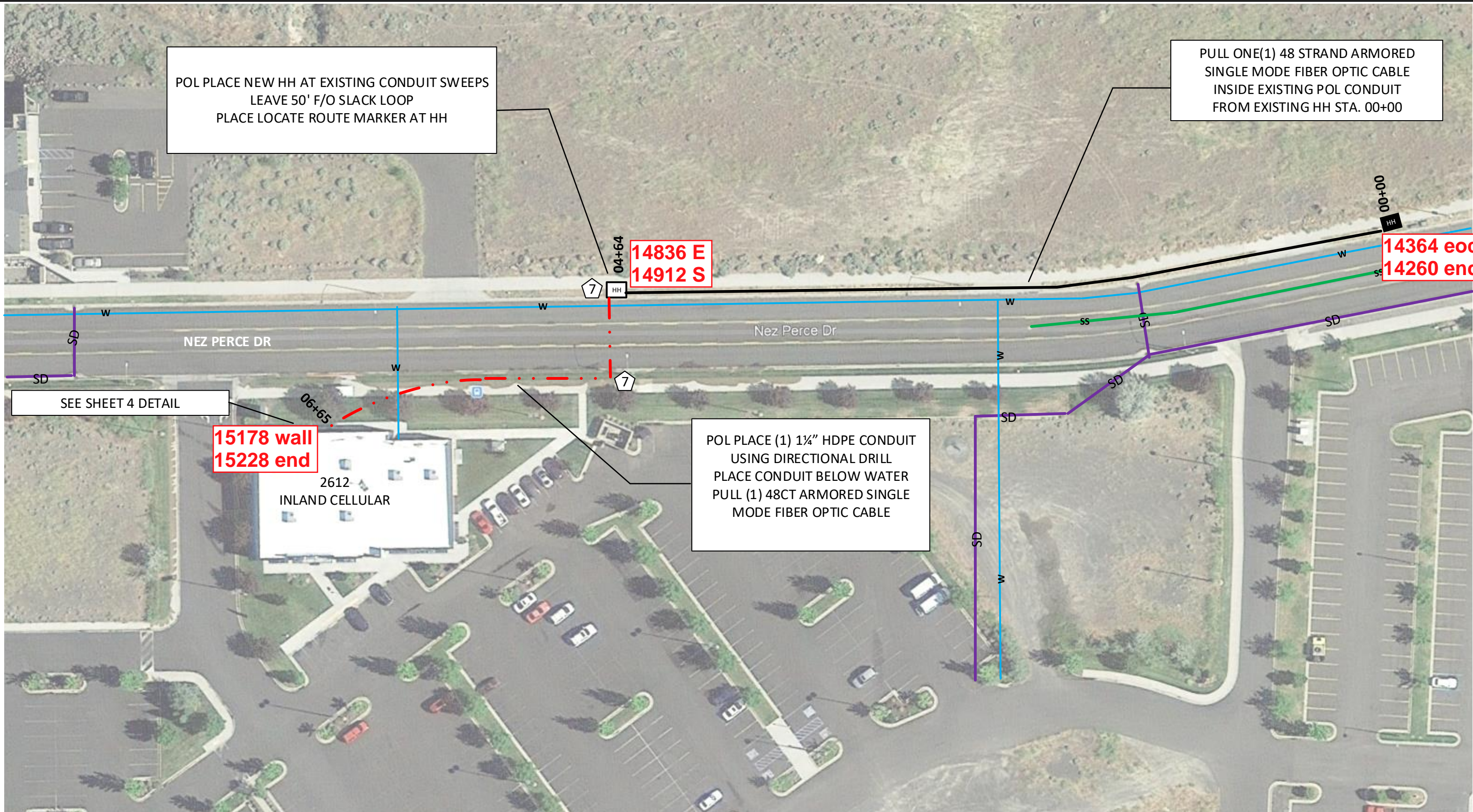
14364 eoc
14260 end

SEE SHEET 4 DETAIL

15178 wall
15228 end

2612
INLAND CELLULAR

POL PLACE (1) 1 1/4" HDPE CONDUIT
USING DIRECTIONAL DRILL
PLACE CONDUIT BELOW WATER
PULL (1) 48CT ARMORED SINGLE
MODE FIBER OPTIC CABLE



Drawing Name: Port of Lewiston

Drawn By: Ron Glessner 08-12-18

2612 NEZ PERCE DRIVE

SIZE	FSCM NO	DWG NO	REV
SCALE		SHEET 3	

REV.	DESCRIPTION	DATE	BY

Contact Information

Port of Lewiston
Dave Doeringsfeld
208-743-5531
Outside Plant Maintenance, llc
Ron Glessner 208-661-5648

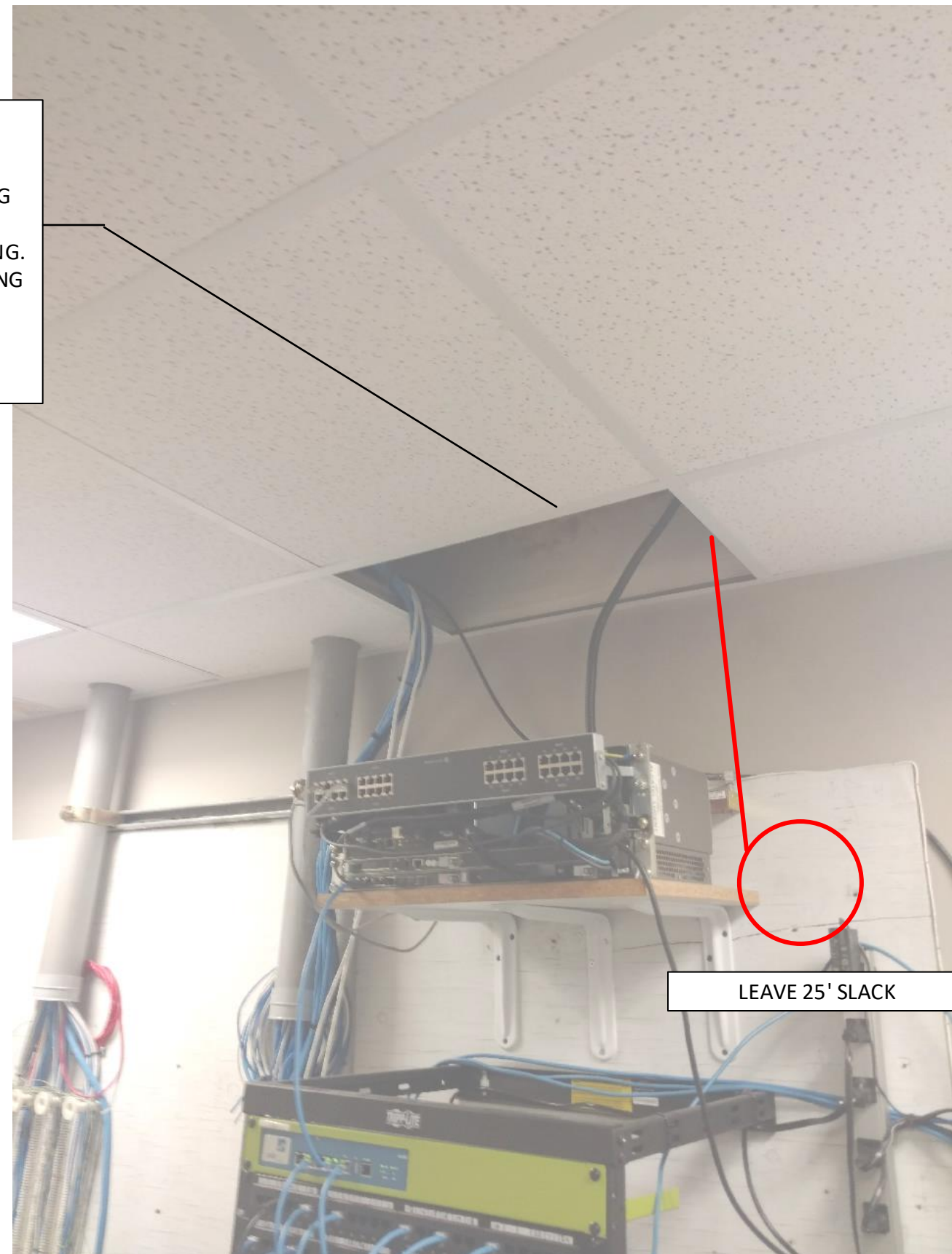
State: ID
County: Nez Perce
City: Lewiston

Section:
Township:
Range:
Legal:





ATTACH 1 1/4" SCH.40 CONDUIT TO BUILDING
 ATTACH PULL BOX TO BUILDING
 PENETRATE WALL ABOVE SUSPENDED CEILING.
 ROUTE F/O CABLE ABOVE SUSPENDED CEILING
 TO SERVER ROOM. APPROXIMATELY 50'





LEAVE 25' SLACK

Drawing Name:Port of Lewiston			
Drawn By: Ron Glessner 08-12-18			
2612 NEZ PERCE DRIVE			
SIZE	FSCM NO	DWG NO	REV
SCALE	SHEET 4		

REV.	DESCRIPTION	DATE	BY
REV.	DESCRIPTION	DATE	BY
REV.	DESCRIPTION	DATE	BY
REV.	DESCRIPTION	DATE	BY
REV.	DESCRIPTION	DATE	BY

Contact Information	
Port of Lewiston Dave Doeringsfeld 208-743-5531 Outside Plant Maintenance, llc Ron Glessner 208-661-5648	

State: ID
County: Nez Perce
City: Lewiston
Section:
Township:
Range:
Legal:

	
 OPM OUTSIDE PLANT MAINTENANCE	