

GENERAL CONSTRUCTION NOTES

CONTRACTOR IS RESPONSIBLE FOR ALL PERMITS EXCEPT STATE HWY., COUNTY ROAD,RAILROAD
OR WATER CROSSINGS.

RESTORATION OF ALL RIGHT OF WAY GROUND WILL BE RESTORED TO ORIGINAL CONDITION OR BETTER.

**CONTRACTOR WILL COORDINATE WITH OSP MANAGER 24 HRS. PRIOR TO BEGINNING CONSTRUCTION.
CALL OSP MANAGER WHEN CONSTRUCTION IS COMPLETED. RON 208-661-5648**

OSP MANAGER WILL CONTACT BUILDING OWNER/TENANT 24 HRS. PRIOR TO
BEGINNING CONSTRUCTION TO COORDINATE ACCESS TO BUILDINGS.

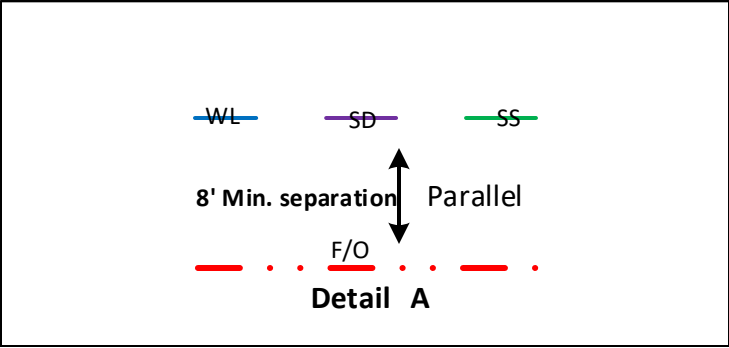
CONTRACTOR IS RESPONSIBLE FOR CALLING LOCATES AND IS RESPONSIBLE
FOR REPAIR AND RESTORATION OF DAMAGED UTILITIES.

FOLLOW ALL NESC CONSTRUCTION GUIDELINES.

CONTRACTOR WILL HAVE ON SITE THE APPROVED DRAWINGS FROM THE UTILITY AND OR
STATE,COUNTY,CITY,RAILROAD.

CONTRACTOR WILL PROVIDE CONDUIT , HAND HOLES , ANCHORS, AERIAL HARDWARE , LOCATE WIRE

PORT OF LEWISTON (POL) WILL PROVIDE , FIBER OPTIC CABLE ,
AERIAL MARKERS , AND LINE ROUTE MARKERS.

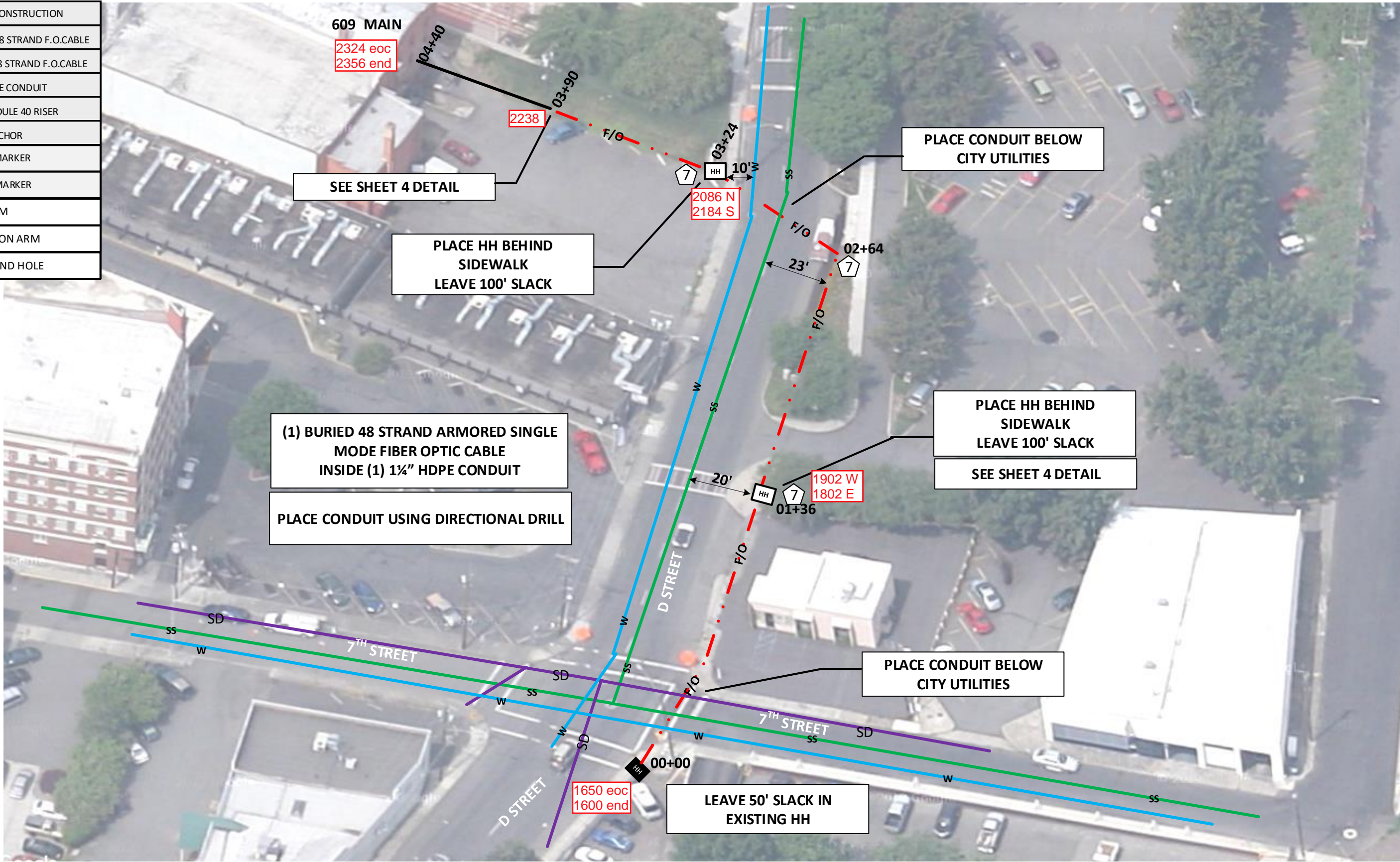


	CULVERT
	DIRECTIONAL BORE
	EXISTING CONDUIT
	BURIED CABLE
	NEW ANCHOR
	SIDEWALK ANCHOR
	EXISTING ANCHOR
	OVERHEAD GUY
	ATTACH TO POLE GROUND
	FIBER SLACK LOOP
	FOREIGN POLE
	CABLE CHANGE
	BURIED ROUTE MARKER
	EXISTING HAND HOLE
	NEW HAND HOLE



Drawing Name:Port of Lewiston	Drawn By:Ron Glessner 11-20-18								Contact Information	State:ID. County:Nez Perce City: Lewiston	
	609 MAIN STREET				REV.	DESCRIPTION	DATE	BY			
	SIZE	FSCM NO	DWG NO		REV	REV.	DESCRIPTION	DATE	BY	Port of Lewiston Dave Doeringsfeld 208-743-5531 Outside Plant Maintenance,llc Ron Glessner208-661-5648	Section: Township: Range: Legal:
	No scale				SHEET 2	REV.	DESCRIPTION	DATE	BY		



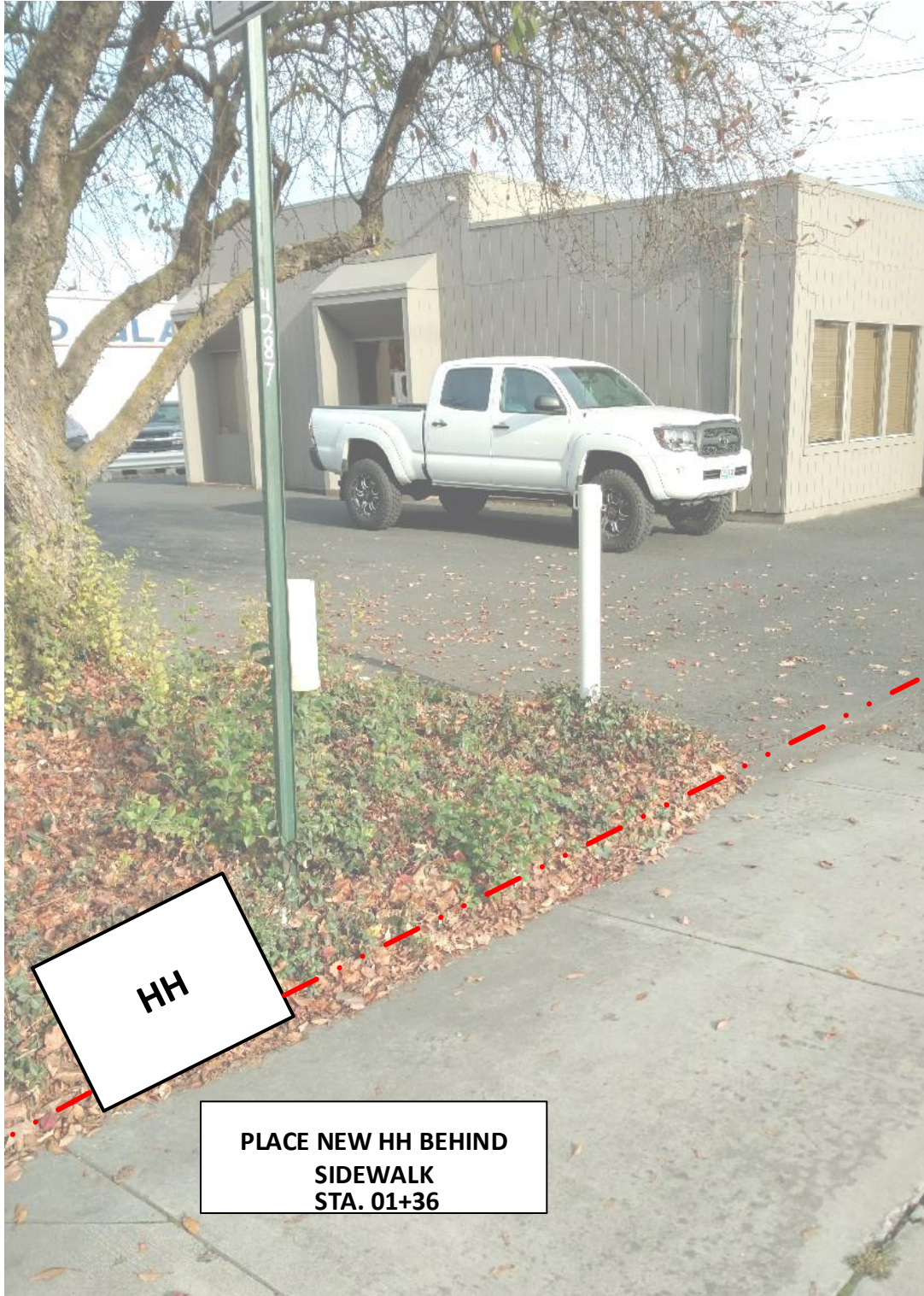
FIBER	CONSTRUCTION
0'	AERIAL 48 STRAND F.O.CABLE
690'	Buried 48 STRAND F.O.CABLE
390'	1¼" HDPE CONDUIT
0	2" SCHEDULE 40 RISER
0	NEW ANCHOR
0	AERIAL MARKER
3	BURIED MARKER
0	PUPI ARM
0	EXTENSION ARM
2	NEW HAND HOLE



Drawing Name: Port of Lewiston	Drawn By: Ron Glessner 11-20-18				REV.	DESCRIPTION	DATE	BY	Contact Information Port of Lewiston Dave Doeringsfeld 208-743-5531 Outside Plant Maintenance, llc Ron Glessner208-661-5648	State: ID County:Nez Perce City:Lewiston
	609 MAIN STREET				REV.	DESCRIPTION	DATE	BY		
	SIZE	FSCM NO	DWG NO	REV	REV.	DESCRIPTION	DATE	BY		Section: Township: Range: Legal:
	SCALE		SHEET 3		REV.	DESCRIPTION	DATE	BY		
					REV.	DESCRIPTION	DATE	BY		







Drawing Name:Port of Lewiston	Drawn By: Ron Glessner 11-20-18			
	609 MAIN STREET			
	SIZE	FSCM NO	DWG NO	REV
	SCALE			SHEET 4

REV.	DESCRIPTION	DATE	BY
REV.	DESCRIPTION	DATE	BY
REV.	DESCRIPTION	DATE	BY
REV.	DESCRIPTION	DATE	BY
REV.	DESCRIPTION	DATE	BY

Contact Information
Port of Lewiston Dave Doeringsfeld 208-743-5531 Outside Plant Maintenance,Ilc Ron Glessner208-661-5648

State: ID County:Nez Perce City:Lewiston
Section: Township: Range: Legal:

