

Drawing Name: Port of Lewiston	Drawn By: Ron Glessner 01-31-19			
	NEZ PERCE JAIL			
	SIZE	FSCM NO	DWG NO	REV
	SCALE			SHEET 1

REV.	DESCRIPTION	DATE	BY
REV.	DESCRIPTION	DATE	BY
REV.	DESCRIPTION	DATE	BY
REV.	DESCRIPTION	DATE	BY
REV.	DESCRIPTION	DATE	BY

Contact Information	State: ID County:Nez Perce City:Lewiston
Port of Lewiston Dave Doeringsfeld 208-743-5531 Outside Plant Maintenance,Ilc Ron Glessner208-661-5648	Section: Township: Range: Legal:



GENERAL CONSTRUCTION NOTES

CONTRACTOR IS RESPONSIBLE FOR ALL PERMITS EXCEPT STATE HWY., COUNTY ROAD,RAILROAD OR WATER CROSSINGS.

RESTORATION OF ALL RIGHT OF WAY GROUND WILL BE RESTORED TO ORIGINAL CONDITION OR BETTER.

CONTRACTOR WILL COORDINATE WITH OSP MANAGER 24 HRS. PRIOR TO BEGINNING CONSTRUCTION.

OSP MANAGER WILL CONTACT BUILDING OWNER/TENANT 24 HRS. PRIOR TO BEGINNING CONSTRUCTION TO COORDINATE ACCESS TO BUILDINGS.



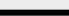












CONTRACTOR IS RESPONSIBLE FOR CALLING LOCATES AND IS RESPONSIBLE FOR REPAIR AND RESTORATION OF DAMAGED UTILITIES.

FOLLOW ALL NESC CONSTRUCTION GUIDELINES.

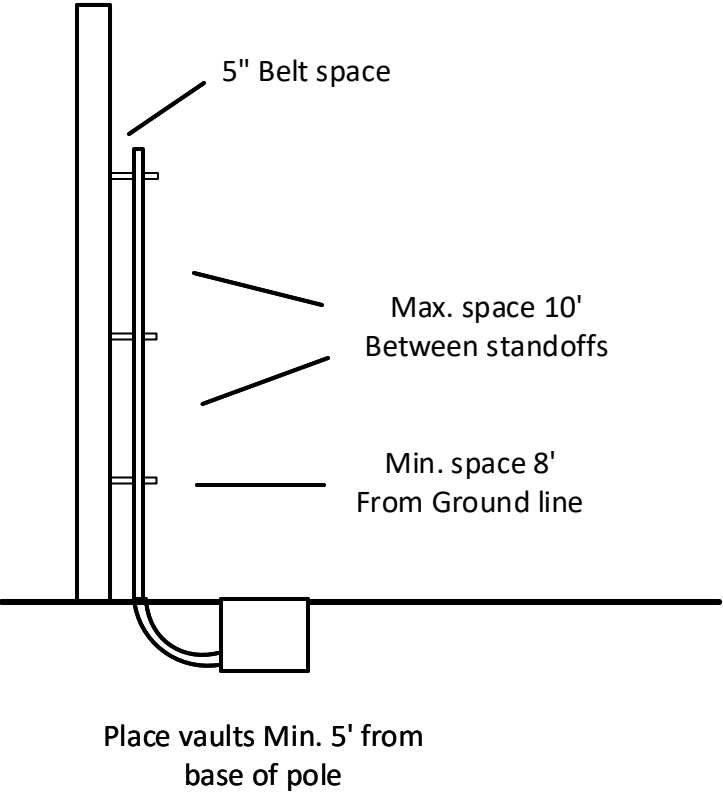
BURIED CONDUIT MUST CROSS UNDERNEATH ALL CITY UTILITIES

CONTRACTOR WILL HAVE ON SITE THE APPROVED DRAWINGS FROM THE UTILITY AND OR STATE,COUNTY,CITY,RAILROAD.

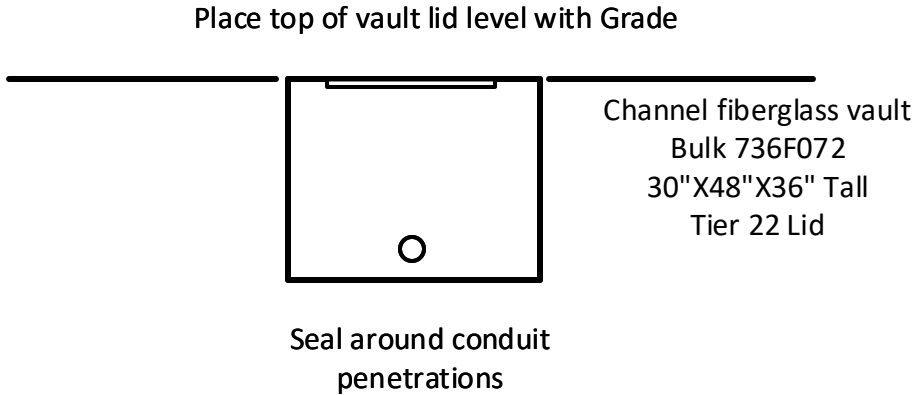
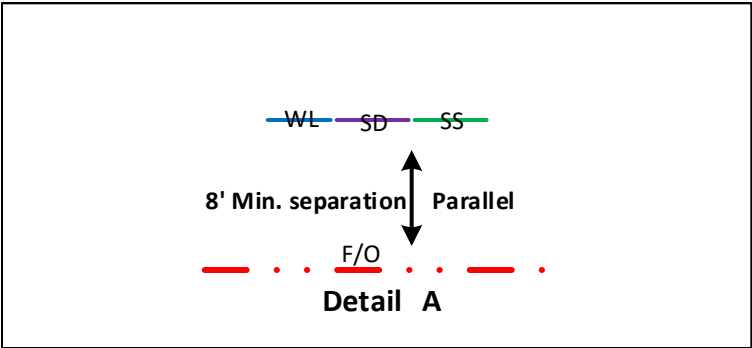
CONTRACTOR WILL PROVIDE CONDUIT , FIBER OPTIC CABLE.

	CULVERT
	DIRECTIONAL BORE
	EXISTING CONDUIT
	BURIED CABLE
	NEW ANCHOR
	SIDEWALK ANCHOR
	EXISTING ANCHOR
	OVERHEAD GUY
	ATTACH TO POLE GROUND
	FIBER SLACK LOOP
	JOINT USE POLE
	CABLE CHANGE
	BURIED ROUTE MARKER
	EXISTING HAND HOLE
	NEW HAND HOLE

Riser Detail



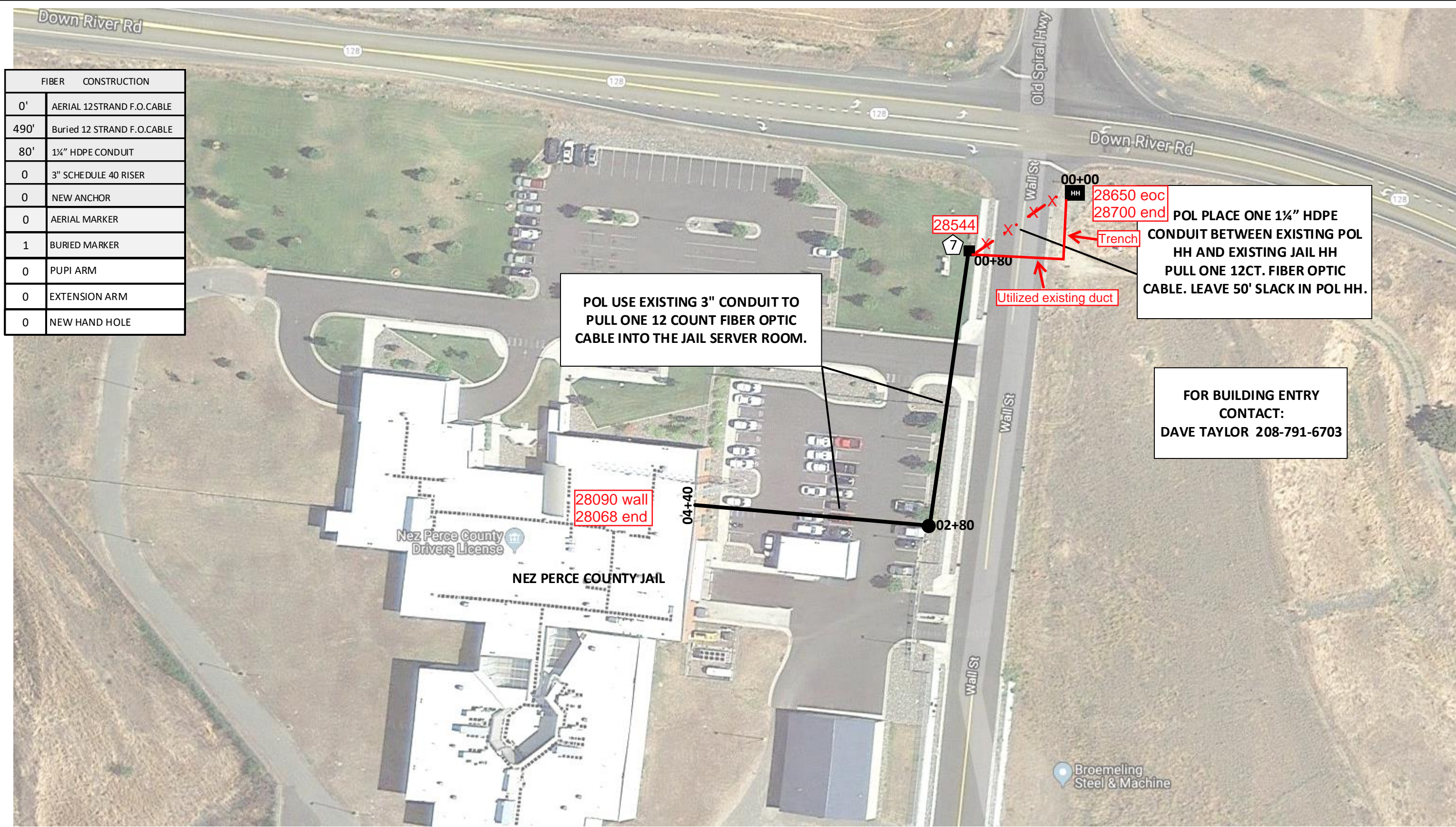
Vault/ Hand Hole Detail



Drawing Name:Port of Lewiston	Drawn By:Ron Glessner 01-31-2019				REV.				Contact Information  Port of Lewiston Dave Doeringsfeld 208-753-5531 Outside Plant Maintenance,Ilc Ron Glessner208-661-5648	State:ID County:Nez Perce City:Lewiston  Section: Township: Range: Legal:
	NEZ PERCE JAIL				REV.	DESCRIPTION	DATE	BY		
	SIZE	FSCM NO	DWG NO	REV	REV.	DESCRIPTION	DATE	BY		
	SCALE	No scale		SHEET 2	REV.	DESCRIPTION	DATE	BY		
					REV.	DESCRIPTION	DATE	BY		







Drawing Name: Port of Lewiston	Drawn By: Ron Glessner 01-31-19			
	NEZ PERCE JAIL			
	SIZE	FSCM NO	DWG NO	REV
	SCALE		SHEET 3	

REV.	DESCRIPTION	DATE	BY
REV.	DESCRIPTION	DATE	BY
REV.	DESCRIPTION	DATE	BY
REV.	DESCRIPTION	DATE	BY
REV.	DESCRIPTION	DATE	BY

Contact Information

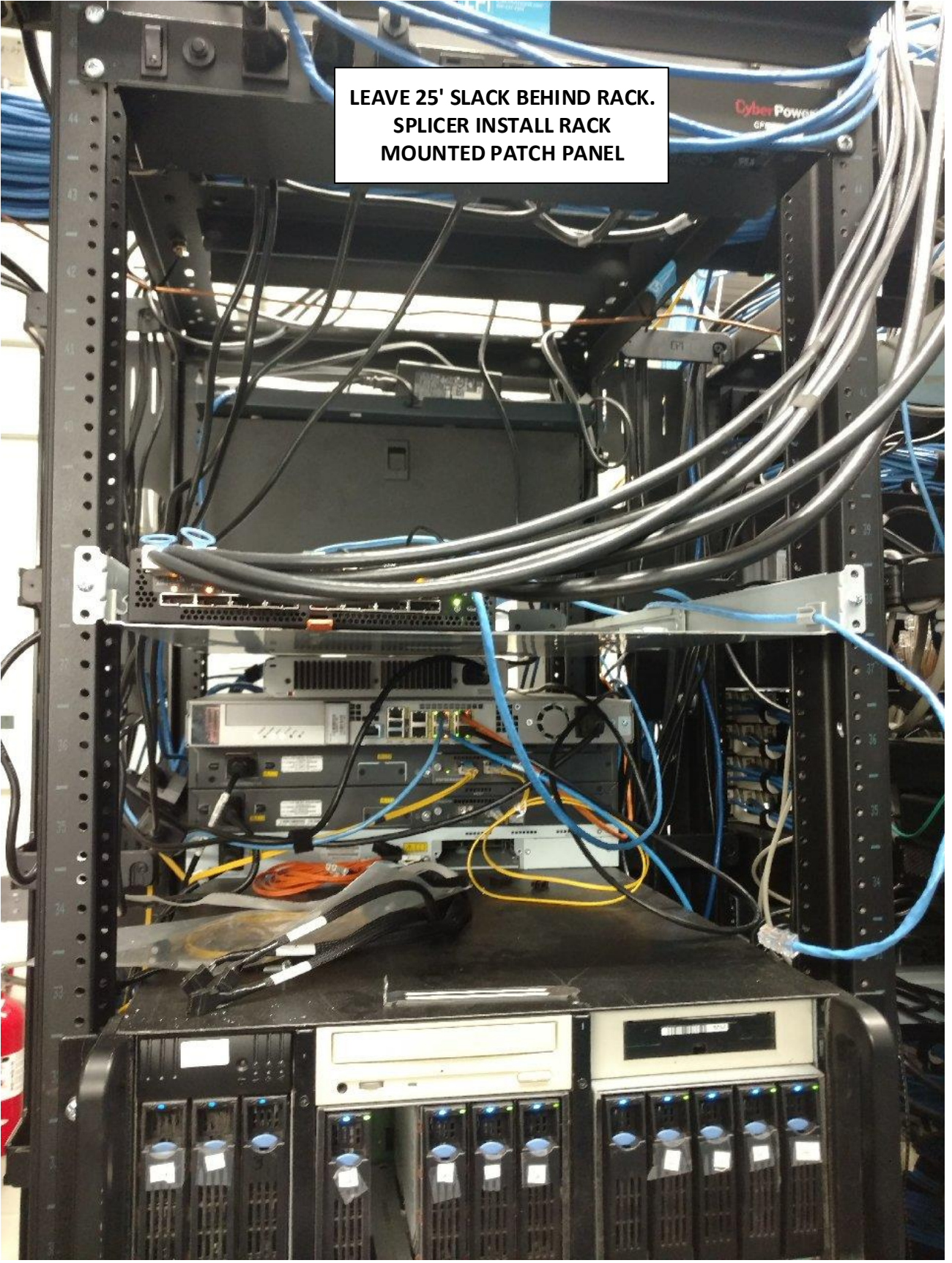
Port of Lewiston  
Dave Doeringsfeld  
208-743-5531  
Outside Plant Maintenance, LLC  
Ron Glessner 208-661-5648

State: ID  
County: Nez Perce  
City: Lewiston

Section:  
Township:  
Range:  
Legal:







Drawing Name: Port of Lewiston	Drawn By: Ron Glessner 01-31-19			
	NEZ PERCE JAIL			
	SIZE	FSCM NO	DWG NO	REV
	SCALE		SHEET 4	

REV.	DESCRIPTION	DATE	BY
REV.	DESCRIPTION	DATE	BY
REV.	DESCRIPTION	DATE	BY
REV.	DESCRIPTION	DATE	BY
REV.	DESCRIPTION	DATE	BY

Contact Information	State: ID County:Nez Perce City:Lewiston
Port of Lewiston Dave Doeringsfeld 208-743-5531 Outside Plant Maintenance,llc Ron Glessner208-661-5648	Section: Township: Range: Legal:

