

A copy of this document and attachments must be provided to the crew installing the cable and hardware along with accompanying audit noting additional requirements. This paperwork must be in possession of the crew doing the work and made available to any Avista employee on demand. Applicant shall obtain, from public authorities and private owners of real property any and all permits or easements required for lawful exercise of the permission granted by this approved application. Applicant shall defend Avista from all claims and injuries, as to the applicants right to be on Avista facilities. This route application is approved based on noted conditions. All Make Ready (MR) costs shall be at the requestors expense unless stated otherwise. Any field changes to the design must be noted by your construction foreman on an asbuilt drawing and sent to Avista Joint Use Dept no later than two weeks after construction is complete.

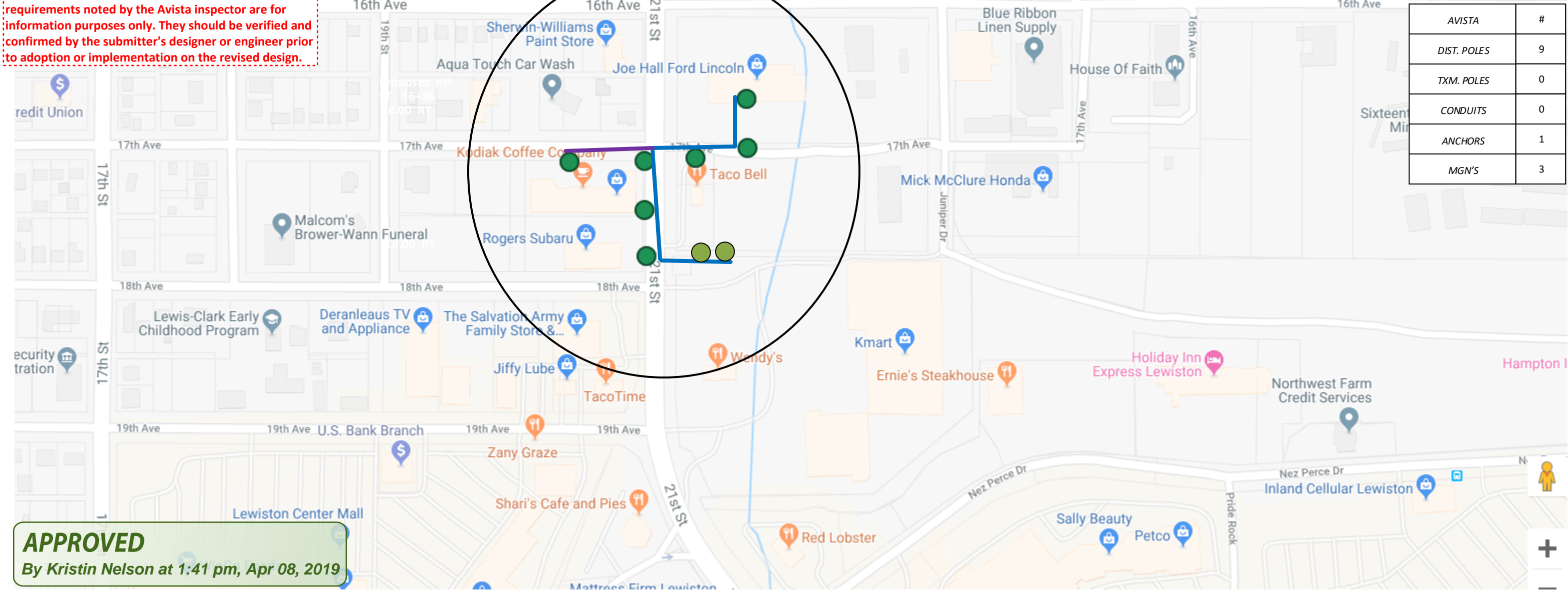
Signed copies of the Avista Make Ready cost approval and the joint use make ready signoff sheets must be submitted to Avista Joint Use Department prior to construction. All make ready work needed to ensure attachment of new facilities at the heights called out in this document must be completed prior to construction of new attachments.

All comments, suggestions, recommendations and requirements noted by the Avista inspector are for information purposes only. They should be verified and confirmed by the submitter's designer or engineer prior to adoption or implementation on the revised design.

PROJECT BEGINS AT 1720 21<sup>ST</sup> STREET IN LEWISTON IDAHO AT AVISTA POLE#166773. THEN PROCEEDS WEST ACROSS 21<sup>ST</sup> STREET TO AVISTA POLE. THEN PROCEEDS NORTH ALONG THE WEST SIDE OF 21<sup>ST</sup> STREET TO AVISTA POLE 166777 AT THE INTERSECTION OF 21<sup>ST</sup> STREET AND 17<sup>TH</sup> AVE. GUYING IS PLACED ONE SPAN WEST ALONG THE SOUTH SIDE OF 17<sup>TH</sup> AVE. TO AVISTA POLE#166778. THEN PROCEEDS EAST ACROSS 21<sup>ST</sup> STREET ALONG THE SOUTH SIDE OF 17<sup>TH</sup> AVE TO AVISTA POLE#166781. THEN PROCEEDS NORTH TO AVISTA POLE#166782 ENDING OUTSIDE OF JOE HALL FORD 1617 21<sup>ST</sup> STREET.

CONTACTS:  
 AVISTA: KRISTIN NELSON- 509-209-4772  
 CENTURY LINK: Rick Harms – 509-235-3349  
 CABLE ONE: TOM DONOHUE – 208-791-5032  
 X O COMM. : STEVE STYERN – 509-444-8547

All comments, suggestions, recommendations and requirements noted by the Avista inspector are for information purposes only. They should be verified and confirmed by the submitter's designer or engineer prior to adoption or implementation on the revised design.



AVISTA	#
DIST. POLES	9
TXM. POLES	0
CONDUITS	0
ANCHORS	1
MGN'S	3

**APPROVED**  
 By Kristin Nelson at 1:41 pm, Apr 08, 2019

Drawing Name: Port of Lewiston		Drawn By: Ron Glessner 02-27-19	
<b>1617 21<sup>st</sup></b>			
SIZE	FSCM NO	DWG NO	REV
SCALE		SHEET 1	

	REVISED	03-26-19	RG
REV.	REVISED	04-05-19	RG
REV.	DESCRIPTION	DATE	BY
REV.	DESCRIPTION	DATE	BY
REV.	DESCRIPTION	DATE	BY

Contact Information	State: ID County: Nez Perce City: Lewiston
Port of Lewiston Dave Doeringsfeld 208-743-5531 Outside Plant Maintenance, llc Ron Glessner 208-661-5648	Section: Township: Range: Legal:



**GENERAL CONSTRUCTION NOTES**

CONTRACTOR IS RESPONSIBLE FOR ALL PERMITS EXCEPT STATE HWY., COUNTY ROAD,RAILROAD OR WATER CROSSINGS.

RESTORATION OF ALL RIGHT OF WAY GROUND WILL BE RESTORED TO ORIGINAL CONDITION OR BETTER.

CONTRACTOR WILL COORDINATE WITH OSP MANAGER 24 HRS. PRIOR TO BEGINNING CONSTRUCTION.

OSP MANAGER WILL CONTACT BUILDING OWNER/TENANT 24 HRS. PRIOR TO BEGINNING CONSTRUCTION TO COORDINATE ACCESS TO BUILDINGS.

CONTRACTOR IS RESPONSIBLE FOR CALLING LOCATES AND IS RESPONSIBLE FOR REPAIR AND RESTORATION OF DAMAGED UTILITIES.

FOLLOW ALL NESC CONSTRUCTION GUIDELINES.

BURIED CONDUIT MUST CROSS UNDERNEATH ALL CITY UTILITIES

CONTRACTOR WILL HAVE ON SITE THE APPROVED DRAWINGS FROM THE UTILITY AND OR STATE,COUNTY,CITY,RAILROAD.

CONTRACTOR WILL PROVIDE AERIAL HARDWARE, MESSENGER CABLE, CONDUIT AND ANCHORS.

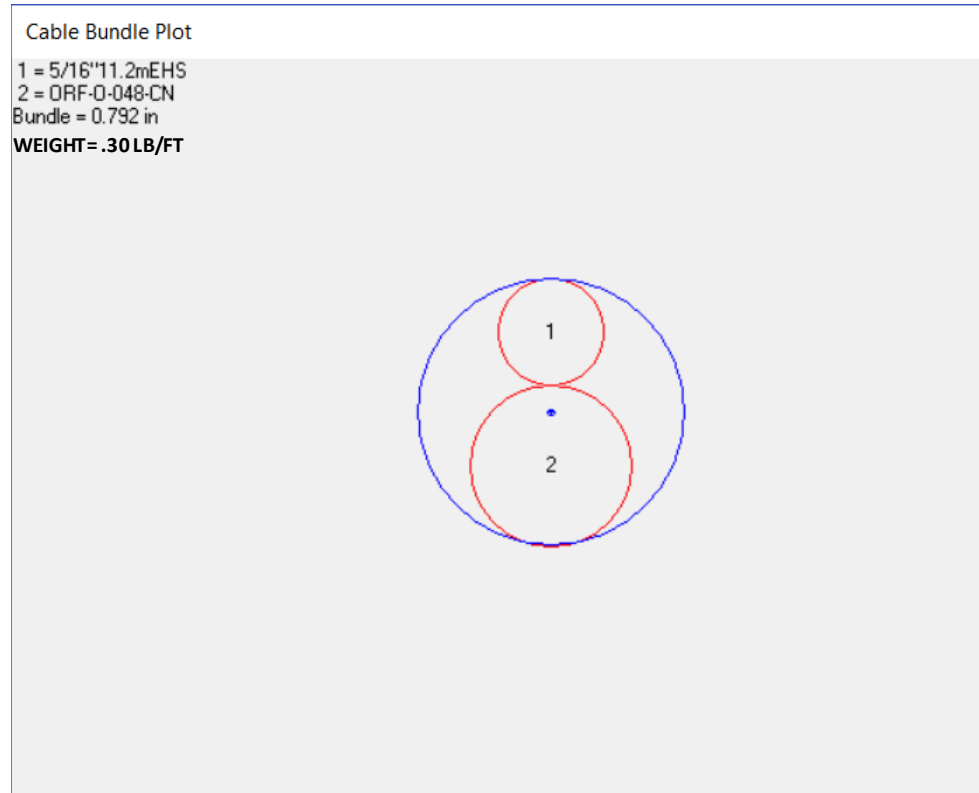
PORT OF LEWISTON WILL PROVIDE FIBER OPTIC CABLE AND AERIAL MARKERS

FIBER	CONSTRUCTION TOTALS
1123'	AERIAL 48 STRAND F.O.CABLE
150'	Buried 48 STRAND F.O.CABLE
0'	1 1/2" HDPE CONDUIT
0'	3" SCHEDULE 40 RISER
2	NEW ANCHOR
9	AERIAL MARKER
0	BURIED MARKER
0	PUPI ARM
0	EXTENSION ARM
0	NEW HAND HOLE

**ABBREVIATIONS:**

TIP	TOP INSIDE POSITION
TOP	TOP OUTSIDE POSITION
BIP	BOTTOM INSIDE POSITION
BOP	BOTTOM OUTSIDE POSTION
EA	EXTENSION ARM
PEA	PLACE EXTENSION ARM
RS	ROAD SIDE
FS	FIELD SIDE
DE	DEAD END
HOA	HEIGHT OF ATTACHMENT

	CULVERT
	DIRECTIONAL BORE
	AERIAL CABLE
	BURIED CABLE
	NEW ANCHOR
	SIDEWALK ANCHOR
	EXISTING ANCHOR
	OVERHEAD GUY
	ATTACH TO POLE GROUND
	FIBER SLACK LOOP
	JOINT USE POLE
	CABLE CHANGE
	BURIED ROUTE MARKER
	EXISTING HAND HOLE
	NEW HAND HOLE



**APPROVED**  
 By Kristin Nelson at 1:41 pm, Apr 08, 2019

Drawing Name:Port of Lewiston	Drawn By:Ron Glessner 02-27-19				REV.	REVISED	03-26-19	RG	Contact Information  Port of Lewiston Dave Doeringsfeld 208-753-5531 Outside Plant Maintenance,Ilc Ron Glessner208-661-5648	State:ID County:Nez Perce City:Lewiston
	<b>1617 21<sup>st</sup></b>				REV.	REVISED	04-05-19	RG		
	SIZE	FSCM NO	DWG NO	REV	REV.	DESCRIPTION	DATE	BY	Section: Township: Range: Legal:	
	SCALE	No scale		SHEET 2	REV.	DESCRIPTION	DATE	BY		
					REV.	DESCRIPTION	DATE	BY		



**AVA REPLACE LIGHT AND RAISE MAST TO 26'  
POL INSTALL NEW ANCHOR N.SIDE AND DG WITH 8' LEAD**

14310	04+04		
POLE #	166777		
POLE CLASS	CL-3 50'		
ATTACHMENTS	HOA	POSITION	MISC
NEUTRAL	30'2"	RS	
LIGHT	24'10"	RS	26'
Proposed POL	23'10"	RS	
X O	22'10"	RS	
CTL	21'10"	RS	
CTL	19'9"	RS	
CTL	20'9"	RS	

14170	05+50		
POLE #	166780		
POLE CLASS	CL-4 45'		
ATTACHMENTS	HOA	POSITION	MISC
NEUTRAL	25'10"	RS	
3RACK	23'10"		
Proposed POL	22'6"	RS	
X O	21'	RS	21'6"
CTL	20'5"	RS	

**AVA REMOVE 3RACK  
X O RAISE HOA 6"**

13738	08+23		
POLE #	166782		
POLE CLASS	CL-4 45'		
ATTACHMENTS	HOA	POSITION	MISC
SECONDARY	26'7"		
Proposed POL	23'	RS	
Security camera	22'6"	RS	21'
X O	22'	RS	

**X O REMOVE SECURITY CAMERA CABLE  
POL DG TO ANCHOR N. SIDE**

POLE #	166778		
POLE CLASS	CL-4 40'		
ATTACHMENTS	HOA	POSITION	MISC
RISER	21'7"		
Down Guy	20'2"	RS	18'
Proposed POL	18'	RS	

**POL USE ABANDONED DG  
LOWER DG 26" TO 18'**

14480	02+64		
POLE #	166776		
POLE CLASS	CL-3 50'		
ATTACHMENTS	HOA	POSITION	MISC
3RACK	32'2"		
LIGHT	30'		
C 1	22'3"	RS	23'
Proposed POL	22'	RS	
CTL	21'	RS	
CTL	20'	RS	

**C1 RAISE HOA 9"**

**AVISTA REMOVE DEALERSHIP FIBER  
CTL REMOVE DEAD DROPS AT 22'8"  
POL INSTALL S/W ANCHOR S. SIDE**

14660	01+51		
POLE #	NO Number		
POLE CLASS	CL-4 55'		
ATTACHMENTS	HOA	POSITION	MISC
NEUTRAL	33'9"	RS	
LIGHT	26'1"		
Dealership Fiber	24'7"	RS	
C1	24'2"	RS	
Proposed POL	23'2"	RS	
CTL	22'8"	RS	
CTL	21'6"	RS	
CTL	20'3"	RS	

**FRAME AS SLACK SPAN  
MAINTAIN MIN. 15'6"  
CLEARANCE LOWEST CABLE  
TO STREET**

14678	00+29		
POLE #	166774		
POLE CLASS	CL-4 50'		
ATTACHMENTS	HOA	POSITION	MISC
RISER	28'1"		
C 1	23'	FS	24'6"
Dealership Fiber	21'5"	FS	
CTL	20'4"	FS	
POL	19'4"	FS	23'6"

**C1 RAISE HOA 18"  
POL EXTEND RISER , RAISE HOA 50"  
CTL REMOVE DEAD DROPS AT 20'4"  
AVISTA REMOVE DEALERSHIP FIBER**

13884	06+86		
POLE #	166781		
POLE CLASS	CL-3 50'		
ATTACHMENTS	HOA	POSITION	MISC
NEUTRAL	30'6"	RS	
Proposed POL	26'6"	RS	
X O	25'6"	RS	
CTL	24'10"	RS	24'6"

**POL DG TO EXISTING ANCHOR E. SIDE  
AND S.SIDE  
CTL LOWER HOA 4"**

00+00			
POLE #	166773		
POLE CLASS	CL-4 50'		
ATTACHMENTS	HOA	POSITION	MISC
3RACK	27'11"		
C 1	24'6"	FS	
POL	23'6"	FS	
Dealership Fiber	22'6"	RS	

**C1 , POL , TRANSFER TO NEW POLE  
AVISTA REMOVE DEALERSHIP FIBER  
POL REMOVE OLD POLE**

AVISTA	#
DIST. POLES	9
TXM. POLES	0
CONDUITS	0
ANCHORS	1
MGN'S	3

**APPROVED**  
By Kristin Nelson at 1:41 pm, Apr 08, 2019

Drawing Name: Port of Lewiston		Drawn By: Ron Glessner 02-27-19	
<b>1617 21<sup>st</sup></b>			
SIZE	FSCM NO	DWG NO	REV
SCALE			SHEET 3

REV.	REVISED	03-26-19	RG
REV.	REVISED	04-05-19	RG
REV.	DESCRIPTION	DATE	BY
REV.	DESCRIPTION	DATE	BY
REV.	DESCRIPTION	DATE	BY

Contact Information		State: ID
Port of Lewiston		County: Nez Perce
Dave Doeringsfeld		City: Lewiston
208-743-5531		
Outside Plant Maintenance, llc		Section:
Ron Glessner 208-661-5648		Township:
		Range:
		Legal:





**POL ROD ONE 48CT. SINGLE MODE ARMORED FIBER OPTIC CABLE THROUGH EXISTING CONDUIT BETWEEN EXISTING HH AND EXISTING RISER ON POLE. LEAVE 50' SLACK IN HH.**

<b>Drawing Name: Port of Lewiston</b>	Drawn By: Ron Glessner 02-27-19			
	<b>1617 21<sup>ST</sup></b>			
	SIZE	FSCM NO	DWG NO	REV
	SCALE		SHEET 4	

REV.	Revised	03-26-19	RG
REV.	Revised	04-05-19	RG
REV.	DESCRIPTION	DATE	BY
REV.	DESCRIPTION	DATE	BY
REV.	DESCRIPTION	DATE	BY

**Contact Information**

Port of Lewiston  
 Dave Doeringsfeld  
 208-743-5531  
 Outside Plant Maintenance, llc  
 Ron Glessner 208-661-5648

State: ID  
 County: Nez Perce  
 City: Lewiston

Section:  
 Township:  
 Range:  
 Legal:

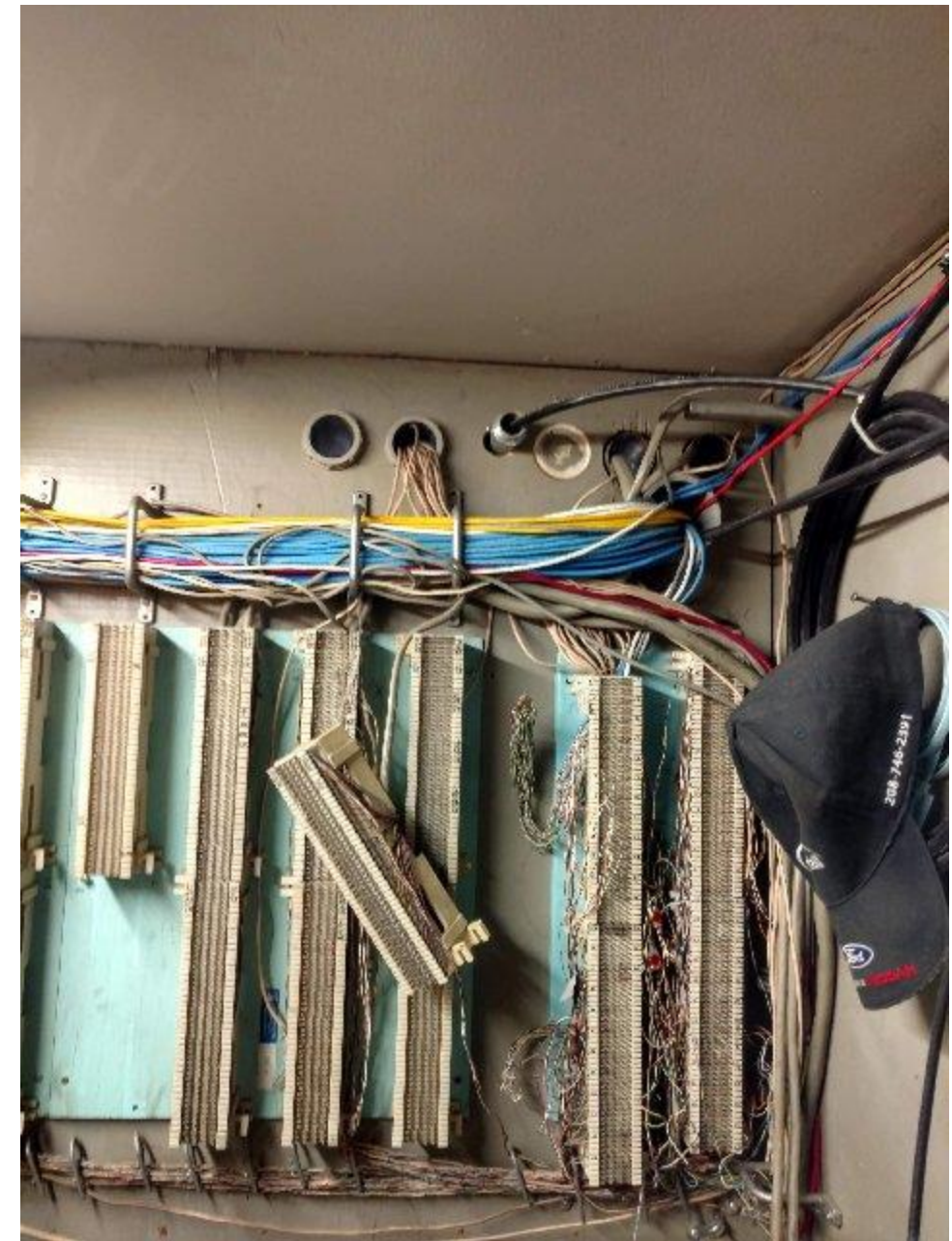




For Building Entry Contact:  
 Steve Cravens- 208-791-1098  
 Or  
 Jody Collier- 208-743-1421

ROUTE CABLE THROUGH  
 BUILDING. APPROXIMATELY 150'.  
 ATTACH CABLE TO CEILING

PENETRATE EXTERIOR WALL NEXT TO AVISTA POLE.  
 DROP CABLE FROM POLE INTO BUILDING



BRING CABLE THROUGH WALL  
 IN CLOSET BEHIND SERVICE  
 DEPARTMENT DESK.  
 LEAVE 25' SLACK

**APPROVED**

By Kristin Nelson at 1:41 pm, Apr 08, 2019

Drawing Name: Port of Lewiston		Drawn By: Ron Glessner 02-27-19				REV.	REVISED	03-26-19	RG	Contact Information		State: ID
		<b>1617 21st</b>				REV.	REVISED	04-05-19	RG	Port of Lewiston		County: Nez Perce
						SIZE		FSCM NO	DWG NO	REV	Dave Doeringsfeld	
						REV.	DESCRIPTION	DATE	BY	Outside Plant Maintenance, llc		Section:
						REV.	DESCRIPTION	DATE	BY	Ron Glessner 208-661-5648		Township:
		SCALE			SHEET 5	REV.	DESCRIPTION	DATE	BY			Range:
						REV.	DESCRIPTION	DATE	BY			Legal:



Make Ready Summary	
Cable One	
Stationing	Description of work
00+00	Transfer to new pole
00+29	RAISE HOA 18"
02+64	RAISE HOA 9"

Make Ready Summary	
Century Link	
Stationing	Description of Work
00+29	REMOVE DEAD DROPS
01+51	REMOVE DEAD DROPS
06+86	LOWER HOA 4"

Make Ready Summary	
X O Communications	
Stationing	Description of Work
05+50	RAISE HOA 6"
08+23	Remove security camera cable

Make Ready Summary	
Avista	
Stationing	Description of Work
04+04	REPLACE LIGHT RAISE MAST TO 26'
00+00	Remove dealership fiber
00+29	Remove dealership fiber
01+51	Remove dealership fiber

Make Ready Summary	
Stationing	Description of Work

**APPROVED**  
By Kristin Nelson at 1:41 pm, Apr 08, 2019

Drawing Name: Port of Lewiston	02-27-19			REVISED	03-26-19	RG	Contact Information  Port of Lewiston Dave Doeringsfeld 208-743-5531 Outside Plant Maintenance, llc Ron Glessner 208-661-5648	State: ID County: Nez Perce City: Lewiston
	1617 21 <sup>st</sup>			REVISED	04-05-19	RG		
	SIZE	FSCM NO	DWG NO	REV.	DESCRIPTION	DATE	BY	Section: Township: Range: Legal:
	SCALE		SHEET 6	REV.	DESCRIPTION	DATE	BY	

