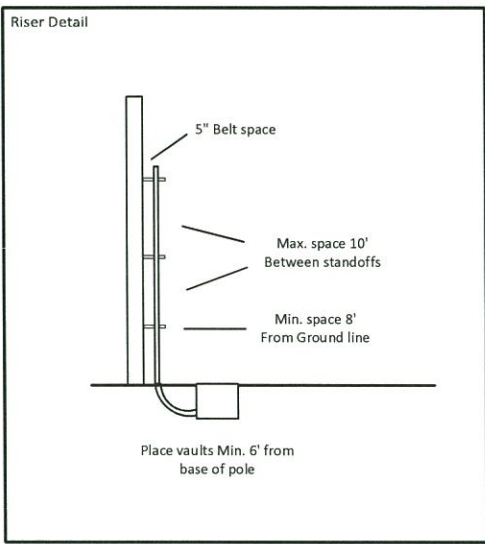
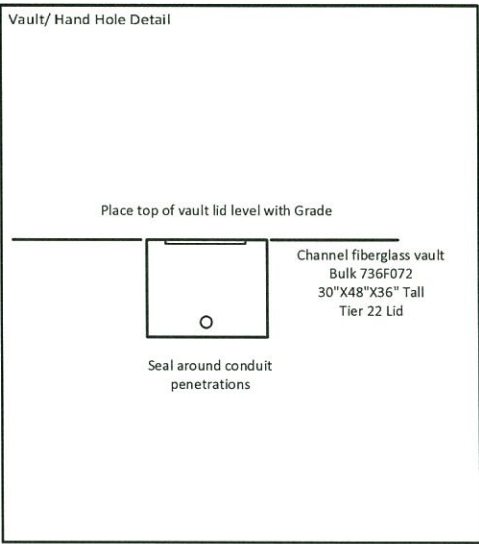
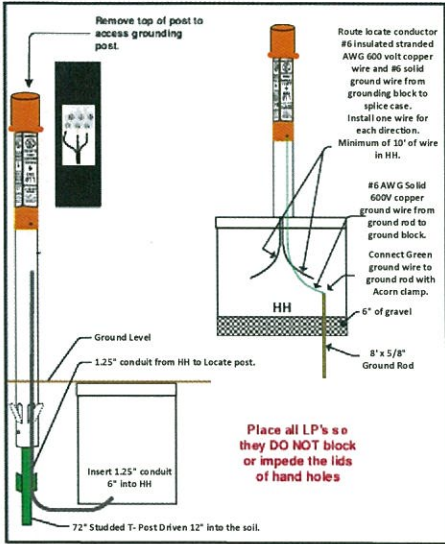


	JOINT USE POLE
	EXISTING ANCHOR
	AERIAL CABLE
	BURIED CABLE
	NEW ANCHOR
	SIDEWALK ANCHOR
	FIBER SLACK LOOP
	OVERHEAD GUY
	ATTACH TO POLE GROUND
	CABLE CHANGE
	BURIED ROUTE MARKER
	EXISTING HAND HOLE
	NEW HAND HOLE

PROJECT IS LOCATED IN LEWISTON IDAHO.
 BEGINNING AT EXISTING POL HH AT 18TH ST. AND 3RD AVE
 PROCEED EAST 650' TO THE WORKFORCE TRAINING
 CENTER AT 1920 3RD AVE N.

Drawing Name: Port of Lewiston		Drawn By: Ron Glessner 05-18-17		REV.	DESCRIPTION	DATE	BY	Contact Information Port of Lewiston Dave Doeringsfeld 208-743-5531 Outside Plant Maintenance, llc Ron Glessner 208-661-5648	State: ID County: Nez Perce City: Lewiston Section: Township: Range: Legal:
1920 3RD AVENUE				REV.	DESCRIPTION	DATE	BY		
SDE	FSCMNO	DWG NO	REV	REV.	DESCRIPTION	DATE	BY		
SCALE	SHEET 1			REV.	DESCRIPTION	DATE	BY		
				REV.	DESCRIPTION	DATE	BY		

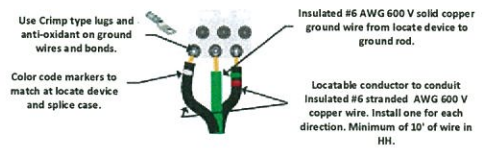




RJS Standards Directional Color Code Use colored tape or zip ties

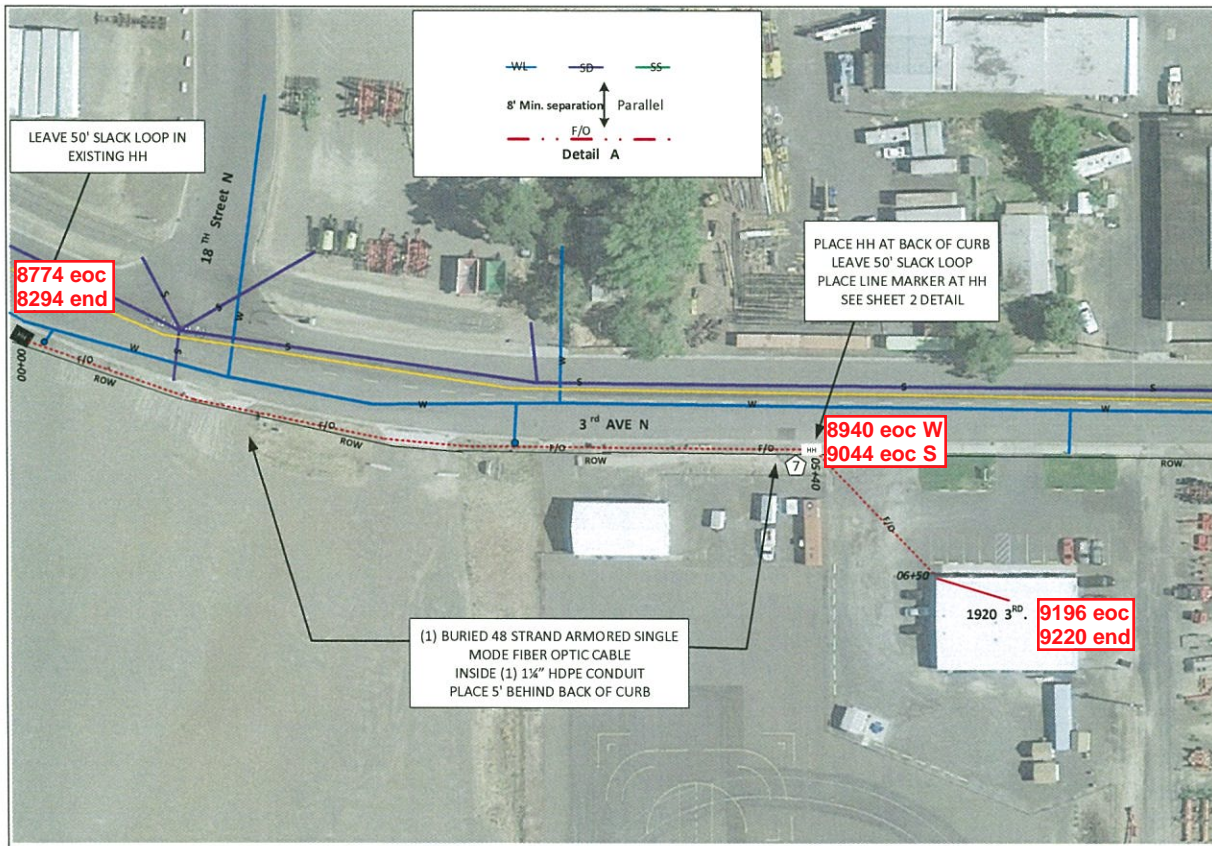
- ORANGE = NORTH
- GREEN = EAST
- BROWN = SOUTH
- SLATE = WEST

ALL BFO'S WILL HAVE DIRECTIONAL COLOR CODE MARKER LOCATED 24" FROM CONDUIT ENDS AND 24" FROM END OF BFO.



Drawn By: Ron Glessner 5-18-17				REV.	DESCRIPTION	DATE	BY	Contact Information	State:
1920 3 RD AVENUE				REV.	DESCRIPTION	DATE	BY		County:
				REV.	DESCRIPTION	DATE	BY		City:
SIZE	FORM NO	DWG NO	REV	REV.	DESCRIPTION	DATE	BY		Section:
SCALE			SHEET 2	REV.	DESCRIPTION	DATE	BY		Township:
								Outside Plant Maintenance, llc Ron Glessner 208-661-5648	Range:
									Legal:





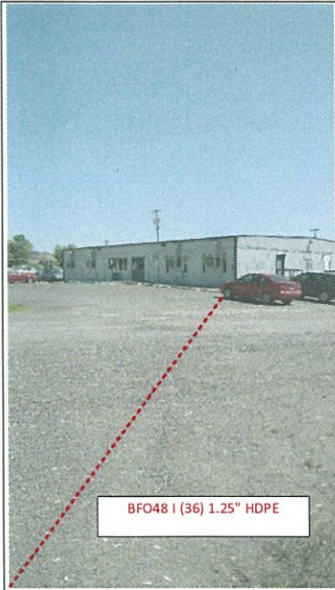
(1) BURIED 48 STRAND ARMORED SINGLE MODE FIBER OPTIC CABLE INSIDE (1) 1 1/4" HDPE CONDUIT PLACE 5' BEHIND BACK OF CURB

	JOINT USE POLE
	EXISTING ANCHOR
	AERIAL CABLE
	BURIED CABLE
	NEW ANCHOR
	SIDEWALK ANCHOR
	FIBER SLACK LOOP
	OVERHEAD GUY
	ATTACH TO POLE GROUND
	CABLE CHANGE
	BURIED ROUTE MARKER
	EXISTING HAND HOLE
	NEW HAND HOLE

FIBER	CONSTRUCTION
0	AERIAL 48 STRAND F.O.CABLE
800'	Buried 48 STRAND F.O.CABLE
650'	1 1/4" HDPE CONDUIT
0	3" SCHEDULE 40 RISER
0	NEW ANCHOR
0	AERIAL MARKER
1	BURIED MARKER
0	PUPPI ARM
0	EXTENSION ARM
1	NEW HAND HOLE

Drawing Name: Port of Lewiston		Drawn By: Ron Glessner 05-18-17		REV.	DESCRIPTION	DATE	BY	Contact Information Port of Lewiston Dave Doeringsfeld 208-743-5531 Outside Plant Maintenance, llc Ron Glessner 208-661-5648	State: ID County: Blaine City: Lewiston Section: Township: Range: Legal:
1920 3RD AVENUE				REV.	DESCRIPTION	DATE	BY		
SIZE	PC/M NO	DWG NO	REV	REV.	DESCRIPTION	DATE	BY		
SCALE	SHEET 3			REV.	DESCRIPTION	DATE	BY		





BFO48 I (36) 1.25" HDPE

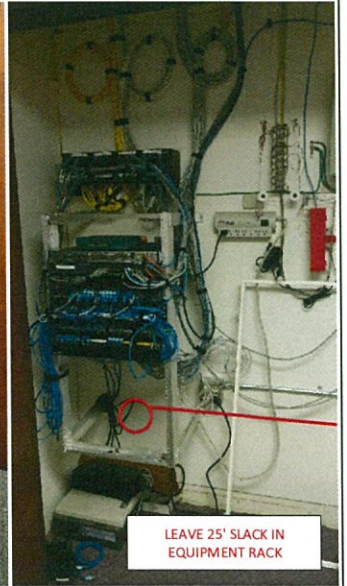


ENTER THROUGH FOUNDATION. PULL FIBER UNDER BUILDING IN CRAWL SPACE.

BFO48 I (36) 1.25" HDPE



BRING FIBER THROUGH FLOOR IN EQUIPMENT CLOSET.



LEAVE 25' SLACK IN EQUIPMENT RACK

Drawing Name: Port of Lewiston		Drawn By: Ron Glessner 05-18-17				REV. DESCRIPTION DATE BY				Contact Information		State: ID County: Nez Perce City: Lewiston	
		1920 3rd AVE				REV. DESCRIPTION DATE BY				Port of Lewiston Dave Doeringsfeld 208-743-5531 Outside Plant Maintenance, llc Ron Glessner 208-661-5648		Section: Township: Range: Legal:	
SIZE	PIC/M/D	DWG NO		REV	REV. DESCRIPTION DATE BY								
SCALE		SHEET #		REV. DESCRIPTION DATE BY									
				REV. DESCRIPTION DATE BY									



Jaynie

From: Shawn Stubbers <SStubbers@Cityoflewiston.org>
Sent: Thursday, June 15, 2017 4:41 PM
To: 'Jaynie'; ron@outsidemain.com
Cc: Jill Tolman; Kris Dugger; Ed George
Subject: FW: 1920 3rd ave N
Attachments: POL 1920 3RD AVE 1 SET.pdf

Ron and Jaynie,

Your plan for 3rd Ave North is approved. Please know that there is an air relief valve inside a concrete manhole just behind the curb at 1920 3rd Ave North that is not shown on the plan. The fiber line will need to be below the water infrastructure in this location. Please make sure your contractor gets a right of way permit before starting construction.

Thanks

Shawn Stubbers, P.E.

City Engineer
City of Lewiston

C 208.790.8812
T 208.746.1316 x 8050
F 888.397.8634



215 D Street Suite B
P.O. Box 617
Lewiston, ID 83501-1930
www.cityoflewiston.org

"To provide excellent public service with entrusted resources."

From: Jaynie [<mailto:portjaynie@portoflewiston.com>]
Sent: Tuesday, June 13, 2017 2:03 PM
To: Shawn Stubbers
Cc: ron@outsidemain.com
Subject: FW: 1920 3rd ave N

Good afternoon, Shawn ~

I am writing to follow up on the below fiber project. Please see below and attached. Can you please provide an update?

Thank you,

Jaynie Bentz

PORT OF LEWISTON

1626 6th Ave N

Lewiston, ID 83501

p-208.743.5531

From: Ron Glessner [<mailto:Ron@OutsideMain.com>]
Sent: Thursday, May 18, 2017 2:42 PM
To: 'Shawn Stubbers'
Cc: Jaynie
Subject: 1920 3rd ave N

Hi Shawn

Attached is a design for the Port of Lewiston. This is buried construction on N. 3rd Ave from an existing POL Hand Hole to the work force training center. Please review design for approval.

Thank you
Ron Glessner
Outside Plant Maintenance



[Notice : This email message is covered by the Electronic Communications Privacy Act, 18 U.S.C. 2510-2521, and is confidential and may be privileged. It is intended only for the designated recipient\(s\). If you are not the designated recipient, retention, distribution or copying of this email message is prohibited and may be unlawful. Please reply to the sender if you have received this message in error, then delete the message.](#)
