

AVISTA	#
DIST. POLES	23
TXM. POLES	0
CONDUITS	0
ANCHORS	1
MGN'S	22

CONTACTS:
 AVISTA: KRISTIN NELSON – 509-209-4772
 CENTURY LINK: Rick Harms – 509-235-3349
 SPARK LIGHT: ALAN LONG – 208-553-1470
 X O COMM.: STEVE STYERN – 509-444-8547

PROJECT STARTS AT AVISTA POLE #215375 AT THE INTERSECTION OF F STREET AND 5TH STREET. THEN PROCEEDS SOUTH ALONG THE WEST SIDE OF 5TH STREET TO AVISTA POLE# 134561 AT THE INTERSECTION OF 5TH STREET AND 2ND AVE..THEN PROCEEDS WEST ALONG THE SOUTH SIDE OF 2ND AVE TO AVISTA POLE # 134596 AT THE SOUTHWEST CORNER OF THE INTERSECTION OF 2ND AVE AND 4TH STREET. THEN PROCEEDS NORTH ON THE WEST SIDE OF 4TH STREET TO AVISTA POLE#134586 AT THE INTERSECTION OF 4TH STREET AND NORTH STREET. THEN PROCEEDING WEST ALONG THE NORTH SIDE OF NORTH STREET TO AVISTA POLE#134597 ON THE SOUTH SIDE OF NORTH STREET. THEN PROCEED TO THE INTERSECTION OF PROSPECT BLVD. AND 3RD STREET AT AVISTA POLE#134627 PROCEED EAST ALONG THE NORTH SIDE OF PROSPECT BLVD. TO AVISTA POLE# 134628.

A copy of this document and attachments must be provided to the crew installing the cable and hardware along with accompanying audit noting additional requirements. This paperwork must be in possession of the crew doing the work and made available to any Avista employee on demand. Applicant shall obtain, from public authorities and private owners of real property any and all permits or easements required for lawful exercise of the permission granted by this approved application. Applicant shall defend Avista from all claims and injuries, as to the applicants right to be on Avista facilities. This route application is approved based on noted conditions. All Make Ready (MR) costs shall be at the requestors expense unless stated otherwise. Any field changes to the design must be noted by your construction foreman on an asbuilt drawing and sent to Avista Joint Use Dept no later than two weeks after construction is complete.

Signed copies of the Avista Make Ready cost approval and the joint use make ready signoff sheets must be submitted to Avista Joint Use Department prior to construction. All make ready work needed to ensure attachment of new facilities at the heights called out in this document must be completed prior to construction of new attachments.

All comments, suggestions, recommendations and requirements noted by the Avista inspector are for information purposes only. They should be verified and confirmed by the submitter's designer or engineer prior to adoption or implementation on the revised design.

APPROVED
 By Kristin Nelson at 12:45 pm, Nov 20, 2019

Drawing Name:Port of Lewiston	Drawn By: Ron Glessner 10-03-19					REVISED	11-08-19	RG	Contact Information Port of Lewiston Dave Doeringsfeld 208-743-5531 Outside Plant Maintenance, llc Ron Glessner208-661-5648	State: ID County:Nez Perce City:Lewiston
	210 MAIN STREET				REV.	DESCRIPTION	DATE	BY		Section: Township: Range: Legal:
					REV.	DESCRIPTION	DATE	BY		
	SIZE	FSCM NO	DWG NO	REV	REV.	DESCRIPTION	DATE	BY		
	SCALE			SHEET 1	REV.	DESCRIPTION	DATE	BY		



GENERAL CONSTRUCTION NOTES

CONTRACTOR IS RESPONSIBLE FOR ALL PERMITS EXCEPT STATE HWY., COUNTY ROAD,RAILROAD OR WATER CROSSINGS.

RESTORATION OF ALL RIGHT OF WAY GROUND WILL BE RESTORED TO ORIGINAL CONDITION OR BETTER.

CONTRACTOR WILL COORDINATE WITH OSP MANAGER 24 HRS. PRIOR TO BEGINNING CONSTRUCTION.

OSP MANAGER WILL CONTACT BUILDING OWNER/TENANT 24 HRS. PRIOR TO BEGINNING CONSTRUCTION TO COORDINATE ACCESS TO BUILDINGS.

CONTRACTOR IS RESPONSIBLE FOR CALLING LOCATES AND IS RESPONSIBLE FOR REPAIR AND RESTORATION OF DAMAGED UTILITIES.

FOLLOW ALL NESC CONSTRUCTION GUIDELINES.

BURIED CONDUIT MUST CROSS UNDERNEATH ALL CITY UTILITIES

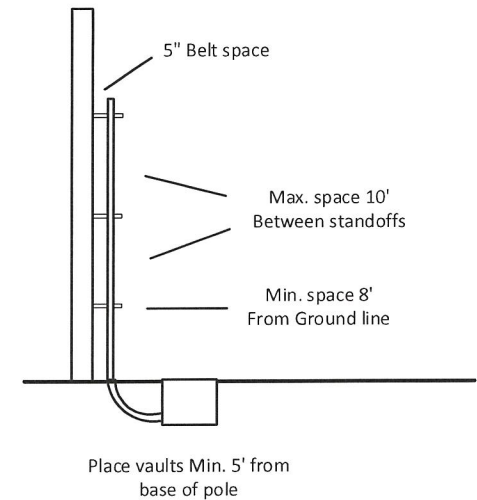
CONTRACTOR WILL HAVE ON SITE THE APPROVED DRAWINGS FROM THE UTILITY AND OR STATE,COUNTY,CITY,RAILROAD.

CONTRACTOR WILL PROVIDE CONDUIT , AERIAL HARDWARE, AND HAND HOLES

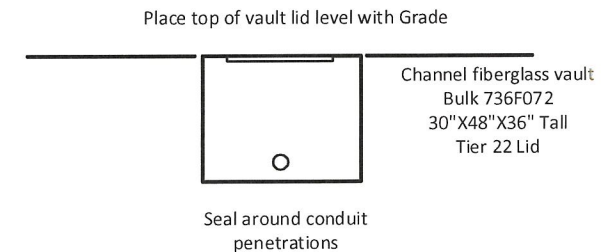
POL WILL PROVIDE FIBER OPTIC CABLE AND AERIAL MARKERS

	CULVERT
	DIRECTIONAL BORE
	AERIAL CABLE
	BURIED CABLE
	NEW ANCHOR
	SIDEWALK ANCHOR
	EXISTING ANCHOR
	OVERHEAD GUY
	ATTACH TO POLE GROUND
	FIBER SLACK LOOP
	JOINT USE POLE
	CABLE CHANGE
	BURIED ROUTE MARKER
	EXISTING HAND HOLE
	NEW HAND HOLE

Riser Detail

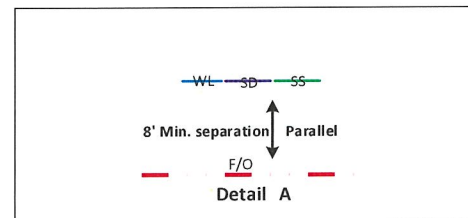
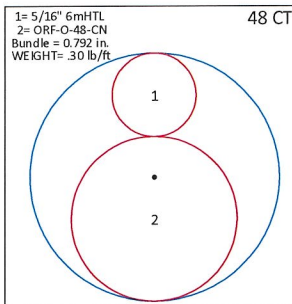


Vault/ Hand Hole Detail



(1) AERIAL 48 STRAND SINGLE MODE FIBER
OPTIC CABLE ON 5/16" EHS MESSENGER

PLACE AERIAL MARKER AT EACH POLE



APPROVED

By Kristin Nelson at 12:45 pm, Nov 20, 2019

Drawing Name: Port of Lewiston	Drawn By: Ron Glessner 10-03-19				REV.	REVISED	11-08-19	RG	Contact Information Port of Lewiston Dave Doeringsfeld 208-753-5531 Outside Plant Maintenance, LLC Ron Glessner 208-661-5648	State: ID County: Nez Perce City: Lewiston Section: Township: Range: Legal:
	210 MAIN STREET				REV.	DESCRIPTION	DATE	BY		
	SIZE	FSCM NO	DWG NO	REV	REV.	DESCRIPTION	DATE	BY		
	SCALE	No scale	SHEET 2		REV.	DESCRIPTION	DATE	BY		
					REV.	DESCRIPTION	DATE	BY		



FIBER	CONSTRUCTION
965'	AERIAL 48 STRAND F.O.CABLE
0'	Buried 48 STRAND F.O.CABLE
0'	1 1/2" HDPE CONDUIT
0	3" SCHEDULE 40 RISER
2	NEW ANCHOR
9	AERIAL MARKER
0	BURIED MARKER
0	PUPI ARM
0	EXTENSION ARM
0	NEW HAND HOLE

AVISTA	#
DIST. POLES	9
TXM. POLES	0
CONDUITS	0
ANCHORS	0
MGR'S	8

8040	00+00
POLE #	215375
POLE CLASS	CL-1 55'
ATTACHMENTS	HOA POSITION MISC
NEUTRAL	30'8" RS
LIGHT	27" RS
Proposed tv	23'6" RS
POL	21'6" RS
Proposed CTL	20'6" RS

TV TRANSFER TO NEW POLE
CTL TRANSFER TO NEW POLE
AND REMOVE OLD POLE

8518	04+76
POLE #	134559
POLE CLASS	CL-1 45'
ATTACHMENTS	HOA POSITION MISC
3 RACK	26'5" RS
LIGHT	23'7" RS
Cable TV	19'5" RS
Proposed POL	19'5" RS

TV RAISE HOA 19"
POL TAKE VACATED TV POSITION
AT 19'5"

8992	09+65
POLE #	215386
POLE CLASS	CL-3 45'
ATTACHMENTS	HOA POSITION MISC
NEUTRAL	28' RS
LIGHT	24'5" RS
Cable TV	20' RS
Proposed POL	20'6" RS
XO	19'4" RS

TV RAISE HOA 18"
AND BOND TO GROUND
XO BOND TO GROUND

APPROVED

By Kristin Nelson at 12:45 pm, Nov 20, 2019

XO LOWER HOA 12"
POL TAKE VACATED XO POSITION

8874	08+49
POLE #	215382
POLE CLASS	CL-3 50'
ATTACHMENTS	HOA POSITION MISC
NEUTRAL	30'6" RS
LIGHT	23'2" RS
Cable TV	21'9" RS
Proposed POL	21'9" RS
XO	21'9" RS

8750	07+24
POLE #	422580
POLE CLASS	CL-3 45'
ATTACHMENTS	HOA POSITION MISC
3 RACK	26' FS
Cable TV	22'10" FS
Proposed POL	21'10" FS
XO	21'10" FS

XO LOWER HOA 12"
POL TAKE VACATED XO POSITION
POL INSTALL ANCHOR AND DG WITH 8' LEAD
XO MOVE DG TO NEW POL ANCHOR
XO BOND TO GROUND AND DISCONNECT
FROM AVA DG

8168	01+35
POLE #	408657
POLE CLASS	CL-3 50'
ATTACHMENTS	HOA POSITION MISC
NEUTRAL	27'10" RS
RISER	26'8" RS
Cable TV	24'10" RS
Proposed POL	22' RS

POL DG TO INSIDE ANCHOR
TV LOWER HOA 18"

8334	02+95
POLE #	215379
POLE CLASS	CL-1 45'
ATTACHMENTS	HOA POSITION MISC
3 RACK	27' RS
LIGHT	24' RS
Cable TV	21' RS
Proposed POL	20' RS

8622	05+86
POLE #	215381
POLE CLASS	CL-1 60'
ATTACHMENTS	HOA POSITION MISC
RISER	30'6" RS
LIGHT	26'5" RS
Proposed TV	24'6" RS
Proposed POL	23'6" RS

CTV TRANSFER TO NEW POLE
AND REMOVE OLD POLE

8714	06+80
POLE #	134561
POLE CLASS	CL-1 50'
ATTACHMENTS	HOA POSITION MISC
NEUTRAL	26'7" RS
Cable TV	22'3" RS
Proposed POL	22'3" RS
XO	21'3" RS

TV RAISE HOA 12"
POL TAKE VACATED C 1
POSITION AT 22'3"
POL INSTALL ANCHOR AND DG
WITH 8' LEAD
XO AND TV BOND TO GROUND

Drawing Name: Port of Lewiston	Drawn By: Ron Glessner 10-03-19	REV.	REVISED	11-08-19	RG	Contact Information	State: ID County: Nez Perce City: Lewiston
		REV.	DESCRIPTION	DATE	BY	Port of Lewiston Dave Doeringsfeld 208-743-5531	Section: Township: Range: Legal:
		REV.	DESCRIPTION	DATE	BY	Outside Plant Maintenance, LLC Ron Glessner 208-661-5648	
		REV.	DESCRIPTION	DATE	BY		
		REV.	DESCRIPTION	DATE	BY		

SIZE	FSCM NO	DWG NO	REV
SCALE		SHEET 3	



FIBER	CONSTRUCTION
944'	AERIAL 48 STRAND F.O.CABLE
0'	Buried 48 STRAND F.O.CABLE
0'	1 1/4" HDPE CONDUIT
0	3" SCHEDULE 40 RISER
3	NEW ANCHOR
9	AERIAL MARKER
0	BURIED MARKER
0	PUPI ARM
1	EXTENSION ARM
0	NEW HAND HOLE

AVISTA	#
DIST. POLES	9
TXM. POLES	0
CONDUITS	0
ANCHORS	1
MGN'S	9

9948	17+59		
POLE #	134592		
POLE CLASS	CL-3 50'		
ATTACHMENTS	HOA	POSITION	MISC
3 RACK	32'		
LIGHT	29'7"		
Cable TV	26'1"	RS	
Proposed POL	22'	RS	

9808	16+19		
POLE #	134586		
POLE CLASS	CL-3 50'		
ATTACHMENTS	HOA	POSITION	MISC
3 RACK	27'5"		
Cable TV	21'	RS	
Proposed POL	20'	RS	

POL INSTALL ANCHOR AND DG WITH 8' LEAD E. SIDE TV DG TO POL ANCHOR AND REMOVE OLD POLE TV BOND TO GROUND

9752	15+69		
POLE #	134585		
POLE CLASS	CL-3 45'		
ATTACHMENTS	HOA	POSITION	MISC
NEUTRAL	27'6"	FS	
LIGHT	25'3"		
Cable TV	23'5"	FS	
Proposed POL	22'5"	RS	

POL INSTALL ANCHOR AND DG WITH 8' LEAD TV MOVE DG TO POL ANCHOR TV ROUTE COAX TO FS OF AVA DG AVA REMOVE OLD POLE TV BOND TO GROUND

9656	14+67		
POLE #	134584		
POLE CLASS	CL-3 45'		
ATTACHMENTS	HOA	POSITION	MISC
NEUTRAL	28'5"	RS	
LIGHT	25'4"		
Cable TV	19'9"	RS	20'9"
Proposed POL	19'9"	RS	

TV RAISE HOA 12" POL TAKE VACATED TV POSITION TV BOND TO GROUND

9492	13+02		
POLE #	134577		
POLE CLASS	CL-3 50'		
ATTACHMENTS	HOA	POSITION	MISC
NEUTRAL	27'9"	RS	
LIGHT	25'8"		
Cable TV	20'10"	RS EA	
Proposed POL	19'10"	RS	

POL INSTALL FG/EA TV BOND TO GROUND REMOVE OLD POLE

POLE #	134598		
POLE CLASS	CL-3 50'		
ATTACHMENTS	HOA	POSITION	MISC
3 RACK	31'4"		
Cable TV	26'8"	RS	
Proposed POL	25'8"	RS	
X O	25'8"	RS	24'8"

X O LOWER HOA 12" POL TAKE VACATED XO POSITION POL INSTALL ANCHOR AND DG WITH 9' LEAD TV AND XO BOND TO GROUND

9350	11+65			
POLE #	215388			
POLE CLASS	CL-3 45'			
ATTACHMENTS	HOA	POSITION	MISC	
3 RACK	27'			
Cable TV	22'6"	RS		
Proposed POL	21'6"	RS		

TV BOND TO GROUND

9242	10+55		
POLE #	435549		
POLE CLASS	CL-3 50'		
ATTACHMENTS	HOA	POSITION	MISC
NEUTRAL	32'4"	RS	
LIGHT	27'3"		
Cable TV	23'2"	RS	24'2"
Proposed POL	23'2"	RS	
X O	22'2"	RS	

TV RAISE HOA 12" POL TAKE VACATED TV POSITION TV AND XO BOND TO GROUND

POLE #	215387		
POLE CLASS	CL-3 45'		
ATTACHMENTS	HOA	POSITION	MISC
NEUTRAL	28'	RS	
Cable TV	24'	RS	
Proposed POL	23'	RS	

POL DG TO AVA ANCHOR

APPROVED

By Kristin Nelson at 12:45 pm, Nov 20, 2019

Drawing Name:Port of Lewiston	Drawn By: Ron Glessner 10-03-19				REV.	REVISED	11-08-19	RG	Contact Information Port of Lewiston Dave Doeringsfeld 208-743-5531 Outside Plant Maintenance, llc Ron Glessner208-661-5648	State: ID County:Nez Perce City:Lewiston
	210 MAIN STREET				REV.	DESCRIPTION	DATE	BY		Section: Township: Range: Legal:
					REV.	DESCRIPTION	DATE	BY		
					REV.	DESCRIPTION	DATE	BY		
		SIZE	FSC/M NO	DWG NO	REV	REV.	DESCRIPTION	DATE		
	SCALE			SHEET 4	REV.	DESCRIPTION	DATE	BY		



FIBER	CONSTRUCTION
392'	AERIAL 48 STRAND F.O.CABLE
536'	Buried 48 STRAND F.O.CABLE
236'	1 1/2" HDPE CONDUIT
2	2" SCHEDULE 40 RISER
2	NEW ANCHOR
5	AERIAL MARKER
2	BURIED MARKER
0	PUPI ARM
0	EXTENSION ARM
2	NEW HAND HOLE

AVISTA	#
DIST. POLES	5
TXM. POLES	0
CONDUITS	0
ANCHORS	0
MGN'S	5

TV RAISE HOA 48"
TV WRAP DG TO RS TO CLEAR
CUMING SPACE
POL DG TO TV ANCHOR
TV BOND TO GROUND
CTL TRANSFER TO NEW POLE

10792	23+14
POLE #	134627
POLE CLASS	CL-1 45'
ATTACHMENTS	HOA POSITION MISC
SINGLE EYE	24'7" RS
LIGHT	23'
Cable TV	16'7" RS 20'7"
Proposed POL	19'7" RS
Proposed CTL	18'7" RS

11098 wall
11200 end

ATTACH CABLE TO BUILDING

10894	24+19
POLE #	134628
POLE CLASS	CL-1 45'
ATTACHMENTS	HOA POSITION MISC
3 RACK	24'10" RS
Cable TV	19'5" RS
Proposed POL	18'5" RS
Proposed CTL	17'5" RS

POL INSTALL ANCHOR AND DG
WITH 7' LEAD
CTL TRANSFER TO NEW POLE
AND REMOVE OLD POLE

SEE SHEET 6

SEE SHEET 6

SEE SHEET 4 TO MATCH

	20+78		
POLE #	134597		
POLE CLASS	CL-3 45'		
ATTACHMENTS	HOA	POSITION	MISC
3 RACK	26'		
Cable TV	21'10"	RS	
Proposed POL	20'10"	RS	

POL INSTALL ANCHOR AND DG
WITH 7' LEAD
TV BOND TO GROUND
CTL TRANSFER TO NEW POLE AND
REMOVE OLD POLE

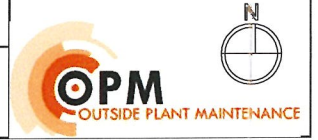
10156	19+66
POLE #	134595
POLE CLASS	CL-1 50'
ATTACHMENTS	HOA POSITION MISC
3 RACK	31'4" RS
LIGHT	27'8" RS
Cable TV	23'8" RS
Proposed POL	22'6" RS

TV BOND TO GROUND
REMOVE OLD POLE

10066	18+76
POLE #	134594
POLE CLASS	CL-3 50'
ATTACHMENTS	HOA POSITION MISC
3 RACK	33'6" RS
Cable TV	27' RS
Proposed POL	22'6" RS

APPROVED
By Kristin Nelson at 12:45 pm, Nov 20, 2019

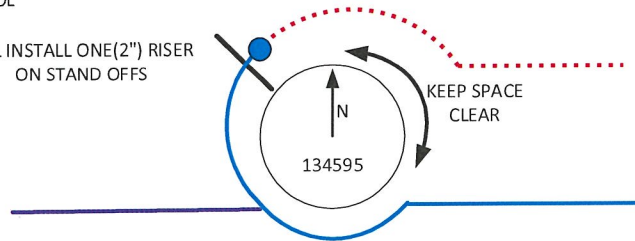
Drawing Name:Port of Lewiston	Drawn By: Ron Glessner 10-03-19				REV.	REVISED	11-08-19	RG	Contact Information Port of Lewiston Dave Doeringsfeld 208-743-5531 Outside Plant Maintenance, LLC Ron Glessner 208-661-5648	State: ID County:Nez Perce City:Lewiston	
	210 MAIN STREET				REV.	DESCRIPTION	DATE	BY		Section: Township: Range: Legal:	
					REV.	DESCRIPTION	DATE	BY			
		SIZE	FSCM NO	DWG NO	REV	REV.	DESCRIPTION	DATE			BY
		SCALE			SHEET 5	REV.	DESCRIPTION	DATE			BY



STA. 19+66

● = POL

POL INSTALL ONE(2") RISER
ON STAND OFFS



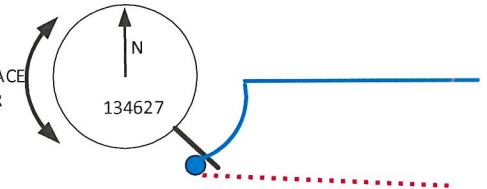
APPROVED

By Kristin Nelson at 12:45 pm, Nov 20, 2019

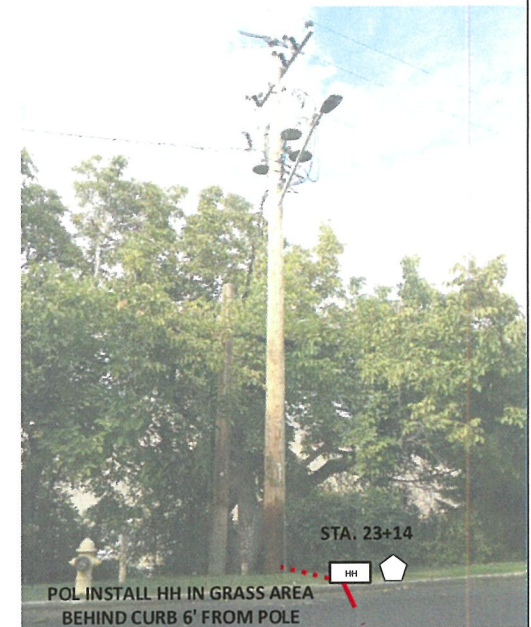
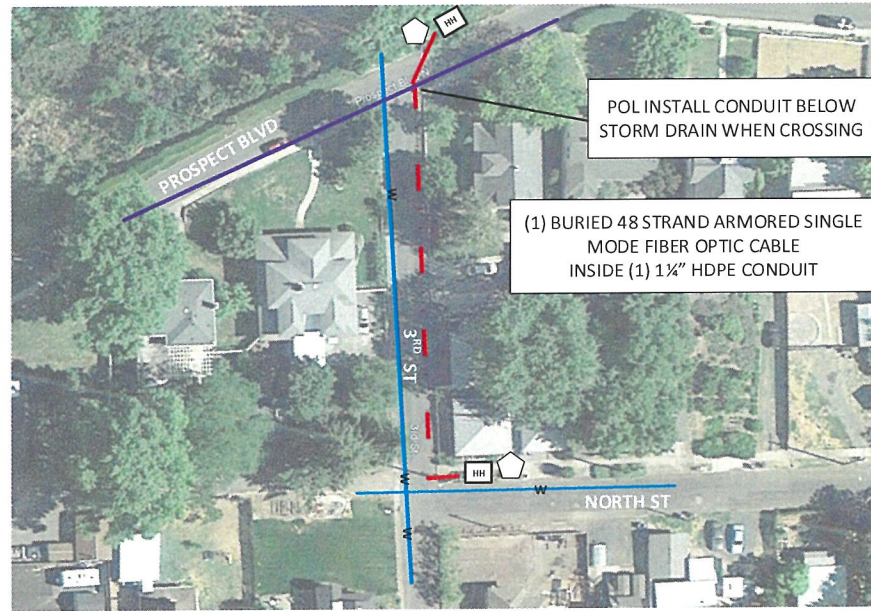
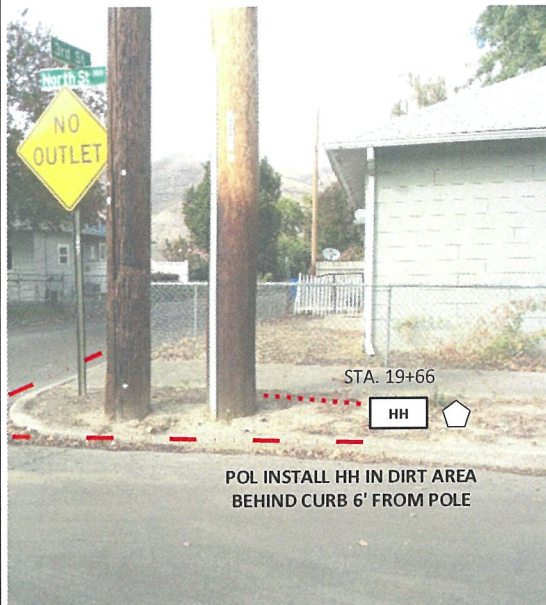
STA. 23+14

● = POL

KEEP SPACE
CLEAR



POL INSTALL ONE(2") RISER
ON STAND OFFS



Drawing Name: Port of Lewiston

Drawn By: Ron Glessner 10-03-19

210 MAIN STREET

SIZE	FSC/M NO	DWG NO	REV
SCALE		SHEET 6	

REV.	REVISION	DATE	BY
REV.	DESCRIPTION	DATE	BY
REV.	DESCRIPTION	DATE	BY
REV.	DESCRIPTION	DATE	BY
REV.	DESCRIPTION	DATE	BY

Contact Information

Port of Lewiston
Dave Doeringsfeld
208-743-5531
Outside Plant Maintenance, LLC
Ron Glessner 208-661-5648

State: ID
County: Nez Perce
City: Lewiston

Section:
Township:
Range:
Legal:



Make Ready Summary	
SPARKLIGHT	
Stationing	Description of work
00+00	Transfer to new pole. Remove old pole
01+35	Lower HOA 18"
04+76	Raise HOA 19"
05+86	Transfer to new pole. Remove old pole.
06+80	Raise HOA 12". Bond to ground
09+65	Raise HOA 18". Bond to ground
10+55	Raise HOA 12". Bond to ground
11+65	Bond to ground
13+02	Bond to ground.
14+67	Raise HOA 12". Bond to ground
15+69	Move DG to POL anchor. Bond to ground
16+19	DG to POL anchor. Bond to ground
19+66	Bond to ground. Remove pole
20+78	Bond to ground.
23+14	Raise HOA 12". Bond to ground.

Make Ready Summary	
X O COMMUNICATIONS	
Stationing	Description of Work
06+80	Bond to ground
07+24	Lower HOA 12" Bond to ground
07+24	Move DG to POL anchor. Bond to ground
08+49	Lower HOA 12"
09+65	Bond to ground
10+55	Bond to ground

Make Ready Summary	
Century Link	
Stationing	Description of Work
00+00	Transfer to new pole. Remove old pole.
23+14	Transfer to new pole. Remove old pole
24+19	Transfer to new pole. Remove old pole.

APPROVED

By Kristin Nelson at 12:45 pm, Nov 20, 2019

Drawing Name: Port of Lewiston	10-03-19				REVISED	11-08-19	RG	Contact Information	State: ID County: Nez Perce City: Lewiston
	210 MAIN STREET								
	SIZE	FSC/MNO	DWG NO	REV	REV.	DESCRIPTION	DATE	BY	Section: Township: Range: Legal:
	SCALE				REV.	DESCRIPTION	DATE	BY	

