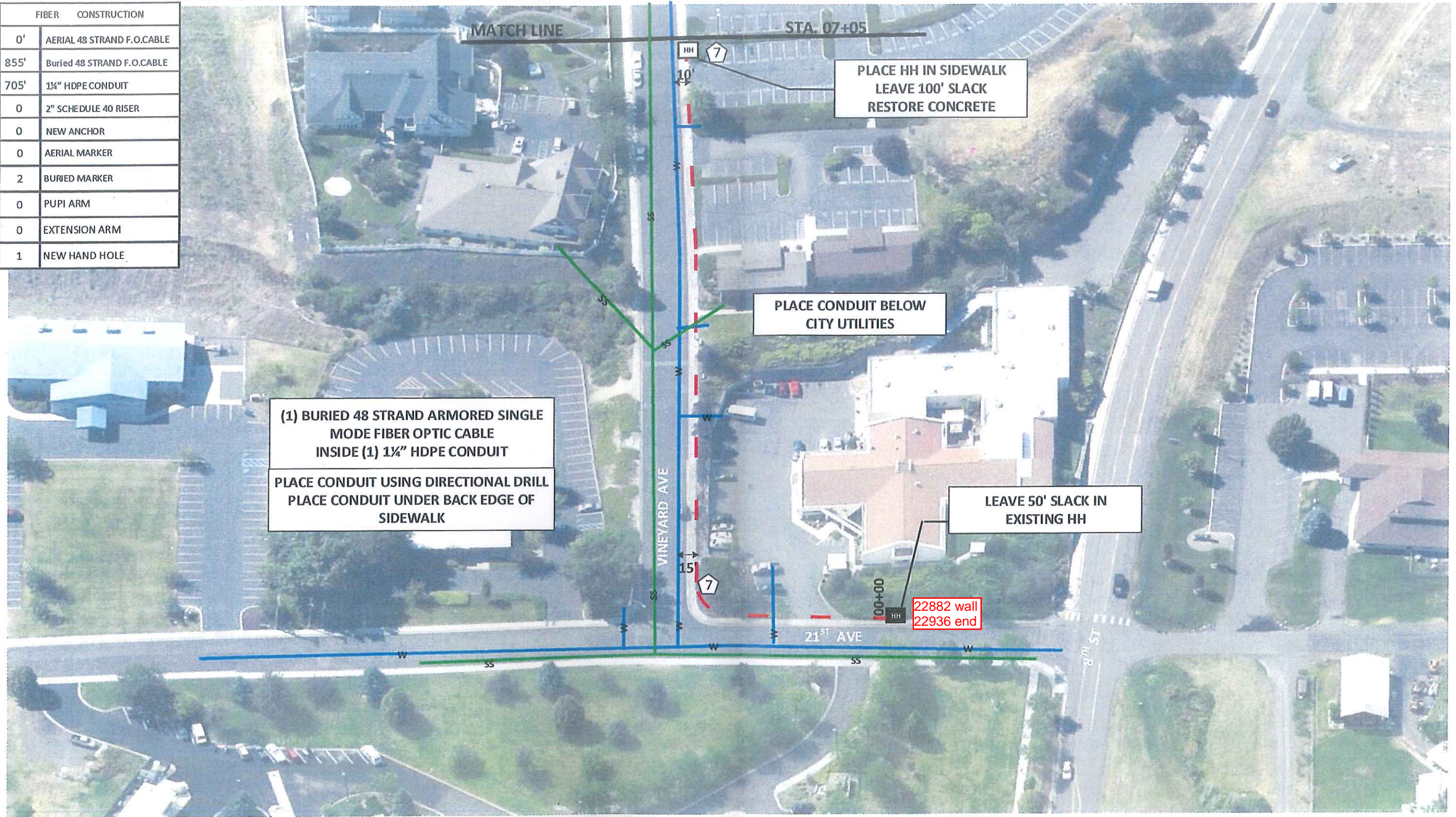


FIBER	CONSTRUCTION
0'	AERIAL 48 STRAND F.O.CABLE
855'	Buried 48 STRAND F.O.CABLE
705'	1½" HDPE CONDUIT
0	2" SCHEDULE 40 RISER
0	NEW ANCHOR
0	AERIAL MARKER
2	BURIED MARKER
0	PUPI ARM
0	EXTENSION ARM
1	NEW HAND HOLE



(1) BURIED 48 STRAND ARMORED SINGLE MODE FIBER OPTIC CABLE INSIDE (1) 1½" HDPE CONDUIT
 PLACE CONDUIT USING DIRECTIONAL DRILL PLACE CONDUIT UNDER BACK EDGE OF SIDEWALK

PLACE HH IN SIDEWALK LEAVE 100' SLACK RESTORE CONCRETE

PLACE CONDUIT BELOW CITY UTILITIES

LEAVE 50' SLACK IN EXISTING HH

22882 wall
 22936 end

Drawing Name: Port of Lewiston		Drawn By: Ron Glessner 11-27-18	
VALLEY MEDICAL			
SIZE	FSC M NO	DWG NO	REV
SCALE	SHEET 3		

REV.	DESCRIPTION	DATE	BY

Contact Information
 Port of Lewiston
 Dave Doeringsfeld
 208-743-5531
 Outside Plant Maintenance, llc
 Ron Glessner 208-661-5648

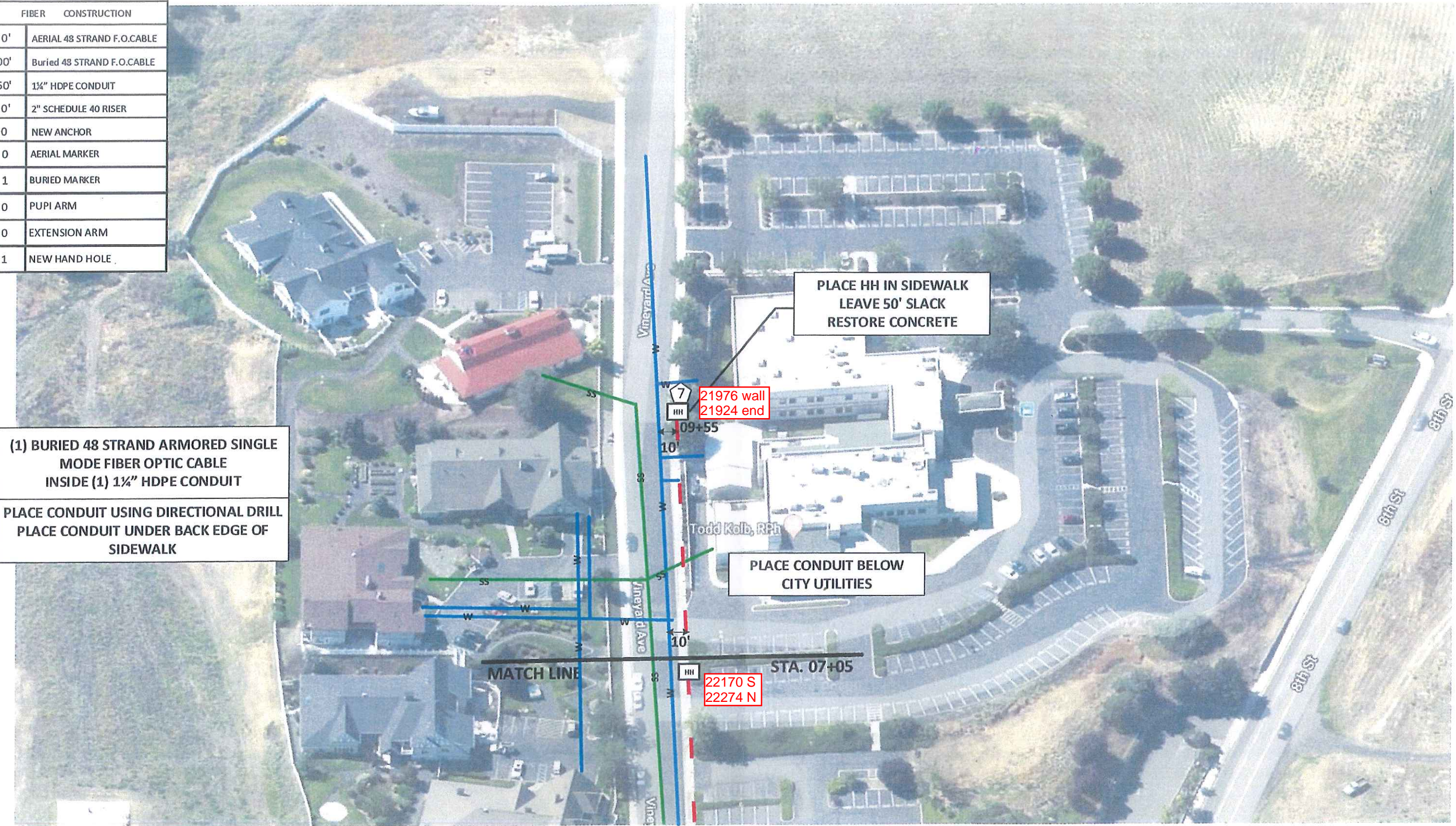
State: ID
 County: Nez Perce
 City: Lewiston
 Section:
 Township:
 Range:
 Legal:



FIBER	CONSTRUCTION
0'	AERIAL 48 STRAND F.O.CABLE
300'	Buried 48 STRAND F.O.CABLE
250'	1 1/4" HDPE CONDUIT
0'	2" SCHEDULE 40 RISER
0	NEW ANCHOR
0	AERIAL MARKER
1	BURIED MARKER
0	PUPI ARM
0	EXTENSION ARM
1	NEW HAND HOLE

(1) BURIED 48 STRAND ARMORED SINGLE MODE FIBER OPTIC CABLE INSIDE (1) 1 1/4" HDPE CONDUIT

PLACE CONDUIT USING DIRECTIONAL DRILL
PLACE CONDUIT UNDER BACK EDGE OF SIDEWALK



Drawing Name: Port of Lewiston	
Drawn By: Ron Glessner 11-27-18	
VALLEY MEDICAL	
SIZE	FSCM NO
SCALE	SHEET 4

REV.	DESCRIPTION	DATE	BY
REV.	DESCRIPTION	DATE	BY
REV.	DESCRIPTION	DATE	BY
REV.	DESCRIPTION	DATE	BY
REV.	DESCRIPTION	DATE	BY

Contact Information	
Port of Lewiston Dave Doeringsfeld 208-743-5531 Outside Plant Maintenance, llc Ron Glessner 208-661-5648	

State: ID County: Nez Perce City: Lewiston
Section: Township: Range: Legal:

--	--

