

Project begins at Avista pole # 144076 at the intersection of Southway ave. and 7<sup>th</sup> street. Then proceeding north on the east side of 7<sup>th</sup> street to Avista pole # 144077. Then proceeding east in alley to Avista pole #144078.

AVISTA	#
DIST. POLES	3
TXM. POLES	0
CONDUITS	0
ANCHORS	0
MGN'S	2

CONTACTS:

AVISTA:  
TODD ELLSWORTH -509-495-2773

CABLE ONE:  
TOM DONOHUE – 208-791-5032

X O COMMUNICATIONS:  
STEVE STYERN – 509-444-8547

CENTURY LINK:  
RICK HARMS – 509-235-3349

**APPROVED**  
By Todd Ellsworth at 7:55 am, Aug 20, 2018

Drawing Name:Port of Lewiston		Drawn By: Ron Glessner 08-07-18				Contact Information				State: ID County:Nez Perce City:Lewiston	
		<b>721 SOUTHWAY AVE</b>				Port of Lewiston Dave Doeringsfeld 208-743-5531 Outside Plant Maintenance, LLC Ron Glessner208-661-5648				Section: Township: Range: Legal:	
SIZE	FSCM NO	DWG NO		REV		REV.	DESCRIPTION	DATE	BY		
SCALE		SHEET 1				REV.	DESCRIPTION	DATE	BY		



# GENERAL CONSTRUCTION NOTES

CONTRACTOR IS RESPONSIBLE FOR ALL PERMITS EXCEPT STATE HWY., COUNTY ROAD,RAILROAD OR WATER CROSSINGS.

RESTORATION OF ALL RIGHT OF WAY GROUND WILL BE RESTORED TO ORIGINAL CONDITION OR BETTER.

**CONTRACTOR WILL COORDINATE WITH OSP MANAGER 24 HRS. PRIOR TO BEGINNING CONSTRUCTION.  
CALL OSP MANAGER WHEN CONSTRUCTION IS COMPLETED. RON 208-661-5648**

OSP MANAGER WILL CONTACT BUILDING OWNER/TENANT 24 HRS. PRIOR TO BEGINNING CONSTRUCTION TO COORDINATE ACCESS TO BUILDINGS.

CONTRACTOR IS RESPONSIBLE FOR CALLING LOCATES AND IS RESPONSIBLE FOR REPAIR AND RESTORATION OF DAMAGED UTILITIES.

FOLLOW ALL NESC CONSTRUCTION GUIDELINES.

CONTRACTOR WILL HAVE ON SITE THE APPROVED DRAWINGS FROM THE UTILITY AND OR STATE,COUNTY,CITY,RAILROAD.

CONTRACTOR WILL PROVIDE FIBER OPTIC CABLE , HAND HOLES , ANCHORS, AERIAL HARDWARE , LOCATE WIRE

PORT OF LEWISTON (POL) WILL PROVIDE , AERIAL MARKERS , AND LINE ROUTE MARKERS.

Signed copies of the Avista Make Ready cost approval and the joint use make ready signoff sheets must be submitted to Avista Joint Use Department prior to construction. All make ready work needed to ensure attachment of new facilities at the heights called out in this document must be completed prior to construction of new attachments.

A copy of this document and attachments must be provided to the crew installing the cable and hardware along with accompanying audit noting additional requirements. This paperwork must be in possession of the crew doing the work and made available to any Avista employee on demand. Applicant shall obtain, from public authorities and private owners of real property any and all permits or easements required for lawful exercise of the permission granted by this approved application. Applicant shall defend Avista from all claims and injuries, as to the applicants right to be on Avista facilities. This route application is approved based on noted conditions. All Make Ready (MR) costs shall be at the requestors expense unless stated otherwise. Any field changes to the design must be noted by your construction foreman on an asbuilt drawing and sent to Avista Joint Use Dept no later than two weeks after construction is complete.

**APPROVED**

By Todd Ellsworth at 7:55 am, Aug 20, 2018

## ABBREVIATIONS:

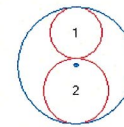
TIP	TOP INSIDE POSITION
TOP	TOP OUTSIDE POSITION
BIP	BOTTOM INSIDE POSITION
BOP	BOTTOM OUTSIDE POSITION
EA	EXTENSION ARM
PEA	PLACE EXTENSION ARM
RS	ROAD SIDE
FS	FIELD SIDE
DE	DEAD END
HOA	HEIGHT OF ATTACHMENT

	CULVERT
	DIRECTIONAL BORE
	AERIAL CABLE
	BURIED CABLE
	NEW ANCHOR
	SIDEWALK ANCHOR
	EXISTING ANCHOR
	OVERHEAD GUY
	ATTACH TO POLE GROUND
	FIBER SLACK LOOP
	JOINT USE POLE
	CABLE CHANGE
	BURIED ROUTE MARKER
	EXISTING HAND HOLE
	NEW HAND HOLE

Cable Bundle Plot

1 = 1 1/4" 4.7m HTL  
2 = ORF-D-012-DA  
Bundle = 0.565 in

Bundle Weight = .169 lb/ft



Drawing Name:Port of Lewiston	Drawn By:Ron Glessner 08-07-18								Contact Information	State:ID. County:Nez Perce City: Lewiston	
	721 SOUTHWAY AVE				REV.	DESCRIPTION	DATE	BY			
	SIZE	FSCM NO	DWG NO		REV	REV.	DESCRIPTION	DATE	BY	Port of Lewiston Dave Doeringsfeld 208-743-5531 Outside Plant Maintenance,Ilc Ron Glessner208-661-5648	Section: Township: Range: Legal:
	No scale					REV.	DESCRIPTION	DATE	BY		
						REV.	DESCRIPTION	DATE	BY		
						REV.	DESCRIPTION	DATE	BY		
	SCALE			SHEET 2							





FIBER	CONSTRUCTION
552'	AERIAL 12 STRAND F.O.CABLE
0'	Buried 12 STRAND F.O.CABLE
0'	1 1/4" HDPE CONDUIT
0	3" SCHEDULE 40 RISER
0	NEW ANCHOR
2	AERIAL MARKER
0	BURIED MARKER
0	PUPI ARM
0	EXTENSION ARM
0	NEW HAND HOLE

AVISTA	#
DIST. POLES	3
TXM. POLES	0
CONDUITS	0
ANCHORS	0
MGN'S	2

24734	02+38		
POLE #	144077		
POLE CLASS	CL-3 45'		
ATTACHMENTS	HOA	POSITION	MISC
3 RACK	24' 5"		
SVC. Riser	22' 5"		
X O	19' 1"	RS	
Proposed POL	18' 1"	RS	

POL PLACE DG TO INSIDE  
ANCHOR N. SIDE  
X O BOND TO GROUND

(1) AERIAL 12 STRAND SINGLE MODE FIBER  
OPTIC CABLE ON 5/16" EHS MESSENGER

PLACE AERIAL MARKER AT EACH POLE

24616	03+53		
POLE #	144078		
POLE CLASS	CL-4 40'		
ATTACHMENTS	HOA	POSITION	MISC
LIGHT	22'6"		
Svc. Riser	21'11"		
X O	17'4"	RS	
Proposed POL	16'4"	RS	

X O BOND TO GROUND

SEE SHEET 4 DETAIL

24516

24456 wall  
24384 end

24970 pole  
25122 end

122 end		00+00		
POLE #		144076		
POLE CLASS		CL-3 50'		
ATTACHMENTS	HOA	POSITION	MISC	
NEUTRAL	29'11"			
LIGHT	25'7"			
C 1	23'	RS		
X O	22'	RS		
ST. Joseph	21'	RS		
POL	20'	RS		
Proposed POL	19'	RS		

POL DG TO EXISTING ANCHOR  
SOUTH SIDE.

Dead end off of existing 3 bolt  
attachment to go north

POL PLACE AERIAL SPLICE CASE.

**APPROVED**

By Todd Ellsworth at 7:55 am, Aug 20, 2018

Drawing Name: Port of Lewiston

Drawn By: Ron Glessner 08-07-18

**721 SOUTHWAY AVENUE**

SIZE	FSCM NO	DWG NO	REV
SCALE		SHEET 3	

REV.	DESCRIPTION	DATE	BY
REV.	DESCRIPTION	DATE	BY
REV.	DESCRIPTION	DATE	BY
REV.	DESCRIPTION	DATE	BY
REV.	DESCRIPTION	DATE	BY

Contact Information

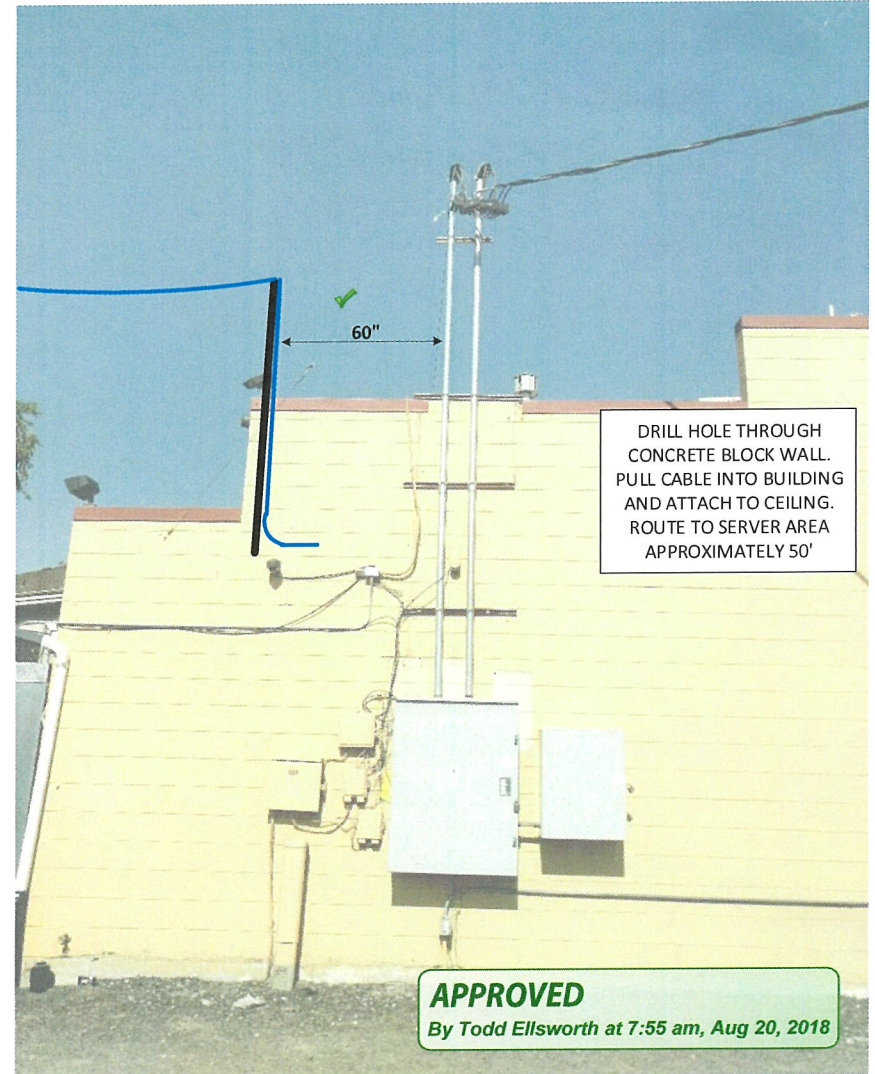
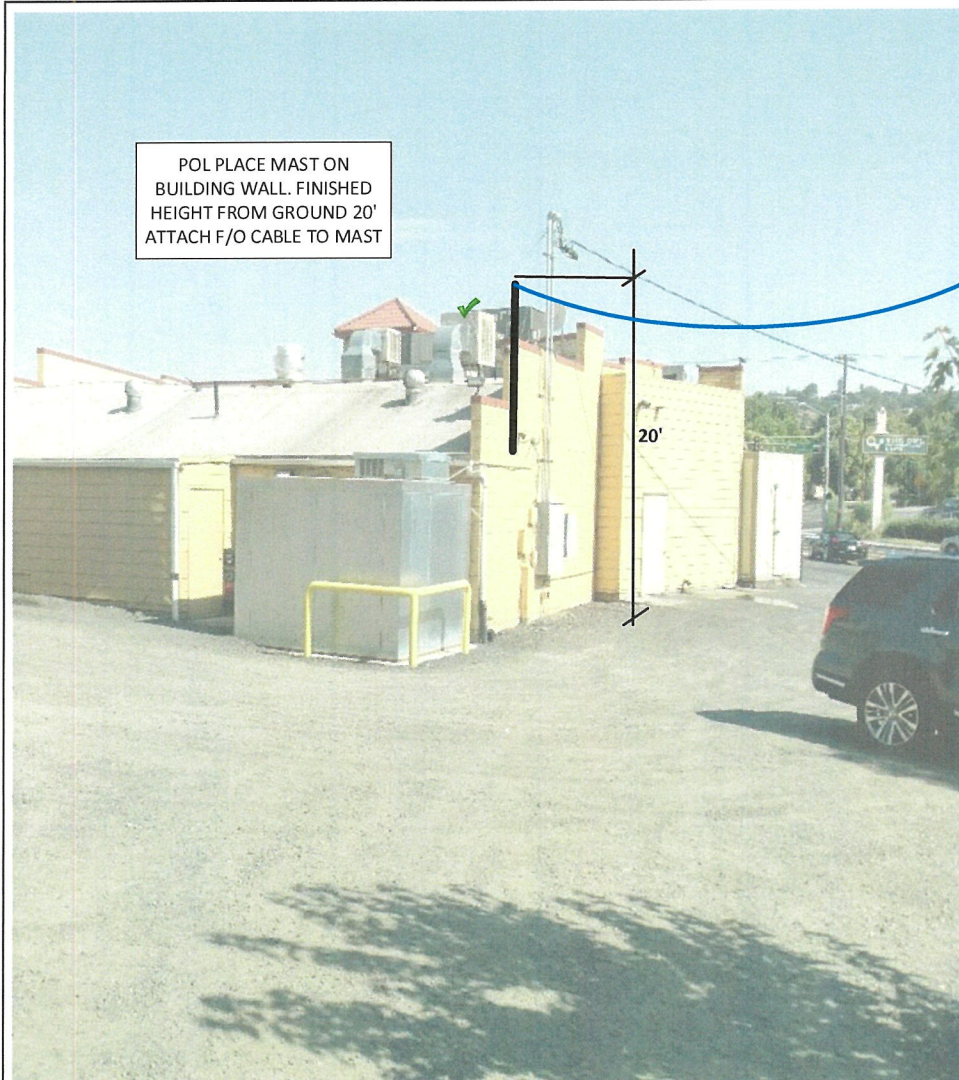
Port of Lewiston  
Dave Doeringsfeld  
208-743-5531  
Outside Plant Maintenance, LLC  
Ron Glessner 208-661-5648

State: ID  
County: Nez Perce  
City: Lewiston

Section:  
Township:  
Range:  
Legal:







Drawing Name: Port of Lewiston		Drawn By: Ron Glessner				REV.	DESCRIPTION	DATE	BY	Contact Information		State: ID County: Nez Perce City: Lewiston	
		721 SOUTHWAY AVE				REV.	DESCRIPTION	DATE	BY	Port of Lewiston Dave Doeringsfeld 208-743-5531		Section:	
SIZE	FSCM NO	DWG NO		REV	REV.	DESCRIPTION	DATE	BY	Outside Plant Maintenance, llc Ron Glessner 208-661-5648		Township:		
SCALE			SHEET 4		REV.	DESCRIPTION	DATE	BY			Range:		
					REV.	DESCRIPTION	DATE	BY			Legal:		



