

PROJECT BEGINS AT AVISTA POLE 170277 AT THE INTERSECTION OF BRYDEN AND 7TH ST. LEWISTON IDAHO. HEADING SOUTH 2777' TO AVISTA POLE 170352 AT THE INTERSECTION OF 7TH STREET AND GRELE AVE. THEN TRANSITION TO BURIED CONSTRUCTION HEADING SOUTH ON 7TH STREET 2377' TO THE INTERSECTION OF 6TH STREET AND AIRPOINTE WAY.

AVISTA	#
DIST. POLES	18
TXM. POLES	0
CONDUITS	0
ANCHORS	0
MGN'S	14

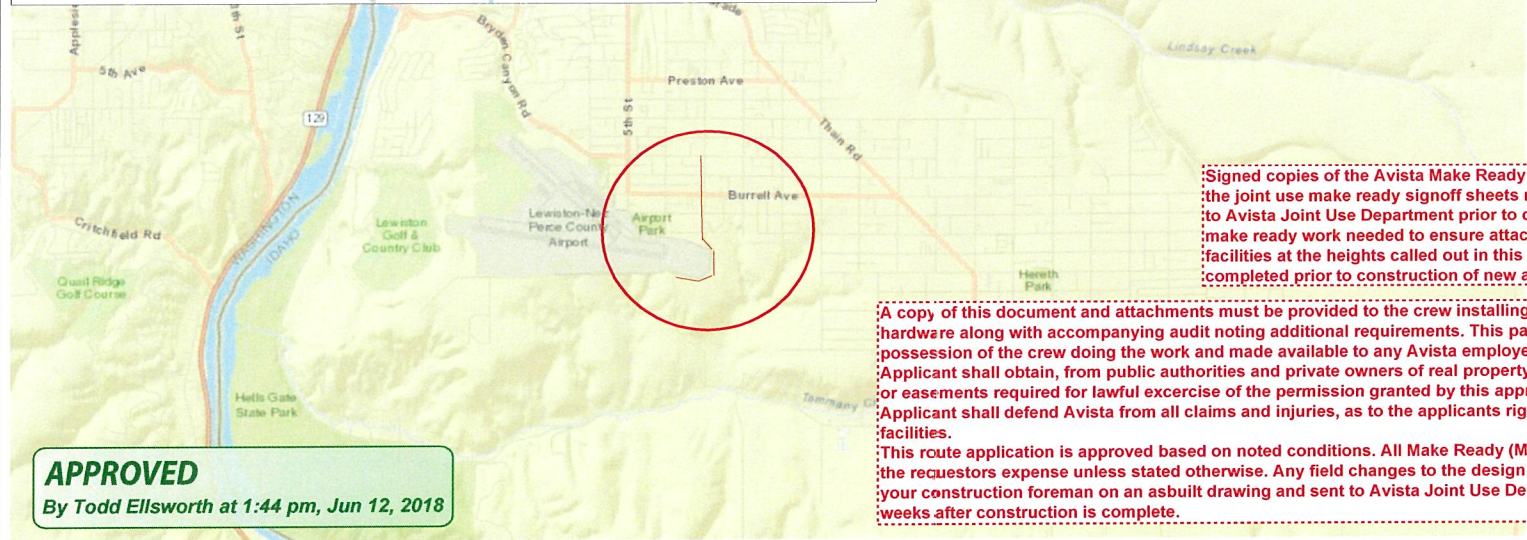
CONTACTS:

AVISTA:
TODD ELLSWORTH -509-495-2773

CENTURY LINK:
JULIO MENDEZ- 208-798-8390

CABLE ONE:
DAN SMITH -208-791-5031

X O COMMUNICATIONS:
STEVE STYERN – 509-444-8547



Signed copies of the Avista Make Ready cost approval and the joint use make ready signoff sheets must be submitted to Avista Joint Use Department prior to construction. All make ready work needed to ensure attachment of new facilities at the heights called out in this document must be completed prior to construction of new attachments.

A copy of this document and attachments must be provided to the crew installing the cable and hardware along with accompanying audit noting additional requirements. This paperwork must be in possession of the crew doing the work and made available to any Avista employee on demand. Applicant shall obtain, from public authorities and private owners of real property any and all permits or easements required for lawful exercise of the permission granted by this approved application. Applicant shall defend Avista from all claims and injuries, as to the applicants right to be on Avista facilities. This route application is approved based on noted conditions. All Make Ready (MR) costs shall be at the requestors expense unless stated otherwise. Any field changes to the design must be noted by your construction foreman on an asbuilt drawing and sent to Avista Joint Use Dept no later than two weeks after construction is complete.

CONSTRUCTION TOTALS INCLUDES SLACK	
3077'	AERIAL 48 STRAND F.O.CABLE
2672'	Buried 48 STRAND F.O.CABLE
2377'	1X" HDPE CONDUIT
1	2" SCHEDULE 40 RISER
2	NEW ANCHOR
17	AERIAL MARKER
6	BURIED MARKER
0	PUPI ARM
0	EXTENSION ARM
1	NEW HAND HOLE

APPROVED
By Todd Ellsworth at 1:44 pm, Jun 12, 2018

Drawing Name:Port of Lewiston		Drawn By: Ron Glessner 05-15-18				Contact Information				State: ID County:Nez Perce City:Lewiston				
LEWISTON STORAGE						REV.	DESCRIPTION	DATE	BY	Port of Lewiston Dave Doeringsfeld 208-743-5531 Outside Plant Maintenance, LLC Ron Glessner208-661-5648			Section:	
						REV.	DESCRIPTION	DATE	BY				Township:	
REV.	DESCRIPTION	DATE	BY	Range:										
REV.	DESCRIPTION	DATE	BY	Legal:										
SIZE	FSCM NO	DWG NO	REV									OPM OUTSIDE PLANT MAINTENANCE		
SCALE			SHEET 1											

GENERAL CONSTRUCTION NOTES

CONTRACTOR IS RESPONSIBLE FOR ALL PERMITS EXCEPT STATE HWY., COUNTY ROAD, RAILROAD OR WATER CROSSINGS.

RESTORATION OF ALL RIGHT OF WAY GROUND WILL BE RESTORED TO ORIGINAL CONDITION OR BETTER.

CONTRACTOR WILL COORDINATE WITH OSP MANAGER 24 HRS. PRIOR TO BEGINNING CONSTRUCTION. CALL OSP MANAGER WHEN CONSTRUCTION IS COMPLETED. RON 208-661-5648

OSP MANAGER WILL CONTACT BUILDING OWNER/TENANT 24 HRS. PRIOR TO BEGINNING CONSTRUCTION TO COORDINATE ACCESS TO BUILDINGS.

CONTRACTOR IS RESPONSIBLE FOR CALLING LOCATES AND IS RESPONSIBLE FOR REPAIR AND RESTORATION OF DAMAGED UTILITIES.

FOLLOW ALL NESC CONSTRUCTION GUIDELINES.

CONTRACTOR WILL HAVE ON SITE THE APPROVED DRAWINGS FROM THE UTILITY AND OR STATE, COUNTY, CITY, RAILROAD.

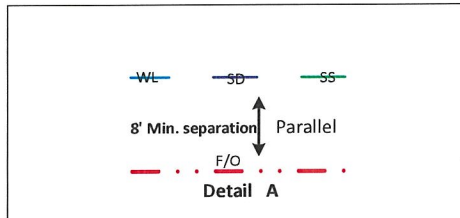
CONTRACTOR WILL PROVIDE CONDUIT, HAND HOLES, ANCHORS, AERIAL HARDWARE, LOCATE WIRE

PORT OF LEWISTON (POL) WILL PROVIDE, FIBER OPTIC CABLE, AERIAL MARKERS, AND LINE ROUTE MARKERS.

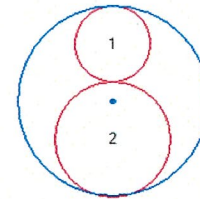
ABBREVIATIONS:

TIP	TOP INSIDE POSITION
TOP	TOP OUTSIDE POSITION
BIP	BOTTOM INSIDE POSITION
BOP	BOTTOM OUTSIDE POSITION
EA	EXTENSION ARM
PEA	PLACE EXTENSION ARM
RS	ROAD SIDE
FS	FIELD SIDE
DE	DEAD END
HOA	HEIGHT OF ATTACHMENT

	CULVERT
	DIRECTIONAL BORE
	AERIAL CABLE
	BURIED CABLE
	NEW ANCHOR
	SIDEWALK ANCHOR
	EXISTING ANCHOR
	OVERHEAD GUY
	ATTACH TO POLE GROUND
	FIBER SLACK LOOP
	JOINT USE POLE
	CABLE CHANGE
	BURIED ROUTE MARKER
	EXISTING HAND HOLE
	NEW HAND HOLE



Cable Bundle Plot
 1 = 5/16" 11.2mEHS
 2 = ORF-0-048-CN
 Bundle = 0.792 in
 WEIGHT = .054LB / FT



APPROVED

By Todd Ellsworth at 1:44 pm, Jun 12, 2018

Drawing Name: Port of Lewiston	Drawn By: Ron Glessner 05-15-18				REV.	DESCRIPTION	DATE	BY	Contact Information	State: ID. County: Nez Perce City: Lewiston
	LEWISTON STORAGE									
	SSE	FSCM NO	DWG NO	REV	REV.	DESCRIPTION	DATE	BY	Port of Lewiston Dave Doeringsfeld 208-743-5531 Outside Plant Maintenance, llc Ron Glessner 208-661-5648	Section: Township: Range: Legal:
	SCALE	No scale		SHEET 2	REV.	DESCRIPTION	DATE	BY		



FIBER	CONSTRUCTION	AVISTA	#
785'	AERIAL 48 STRAND F.O.CABLE	DIST. POLES	6
0'	Buried 48 STRAND F.O.CABLE	TXM. POLES	0
0'	1 1/2" HDPE CONDUIT	CONDUITS	0
0	3" SCHEDULE 40 RISER	ANCHORS	0
1	NEW ANCHOR	MGN'S	4
5	AERIAL MARKER		
0	BURIED MARKER		
0	PUPI ARM		
0	EXTENSION ARM		
0	NEW HAND HOLE		

00+00			
POLE #	170277		
POLE CLASS	CL-4 45'		
ATTACHMENTS	HOA	POSITION	MISC
3 Rack	27'1"		
C1	23'5"	RS	
LSD	22'5"	RS	
Proposed POL	21'5"	RS	

POL Place new anchor North side.

01+72			
POLE #	170290		
POLE CLASS	CL-4 55'		
ATTACHMENTS	HOA	POSITION	MISC
Secondary	38'8"		
C1	24'7"	RS	
Proposed POL	23'7"	RS	

02+66			
POLE #	170291		
POLE CLASS	CL-3 45'		
ATTACHMENTS	HOA	POSITION	MISC
3 Rack	27'3"		
C1	23'8"	RS	
Proposed POL	22'8"	RS	

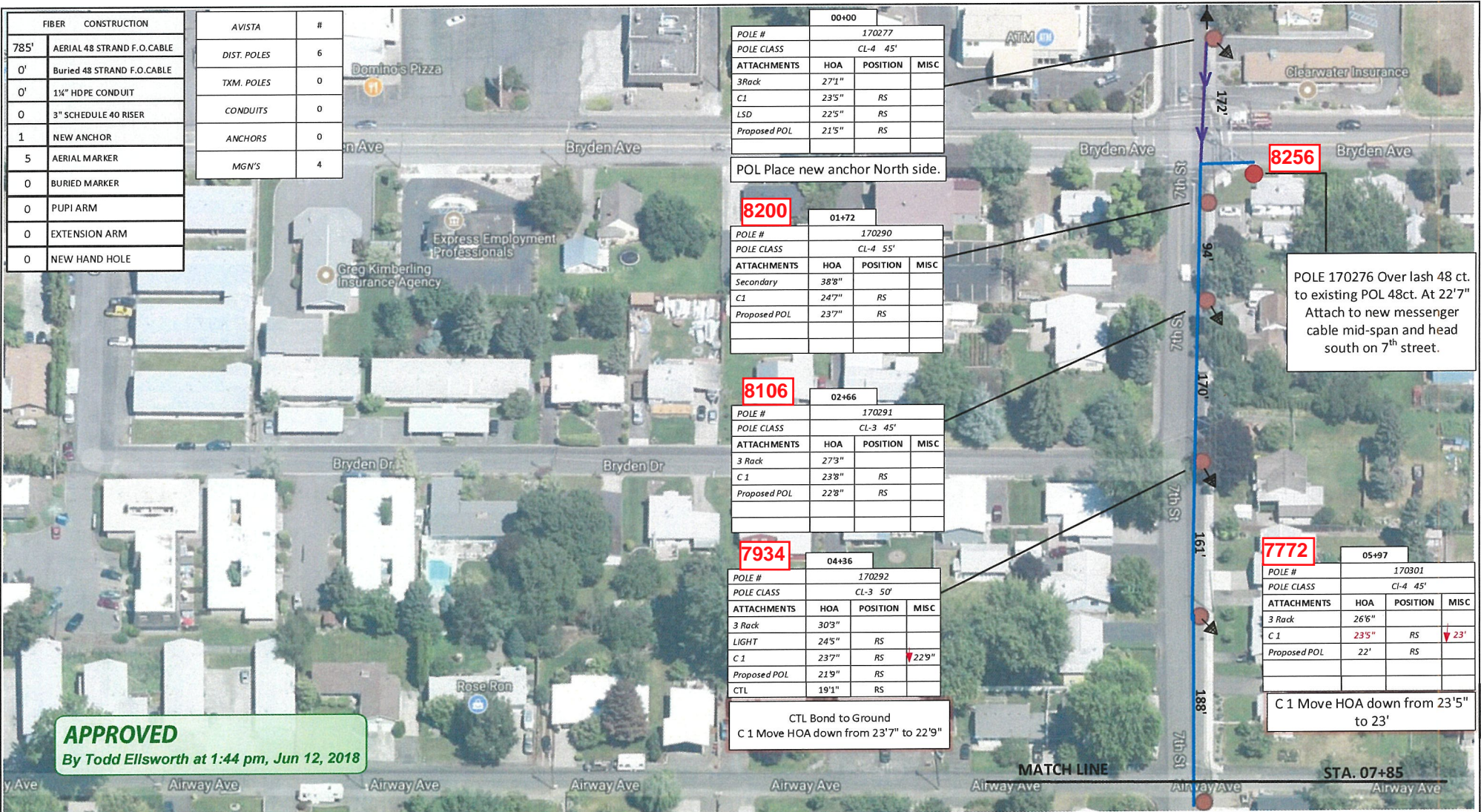
04+36			
POLE #	170292		
POLE CLASS	CL-3 50'		
ATTACHMENTS	HOA	POSITION	MISC
3 Rack	30'3"		
LIGHT	24'5"	RS	
C1	23'7"	RS	22'9"
Proposed POL	21'9"	RS	
CTL	19'1"	RS	

CTL Bond to Ground
C1 Move HOA down from 23'7" to 22'9"

05+97			
POLE #	170301		
POLE CLASS	CL-4 45'		
ATTACHMENTS	HOA	POSITION	MISC
3 Rack	26'6"		
C1	23'5"	RS	23'
Proposed POL	22'	RS	

C1 Move HOA down from 23'5" to 23'

APPROVED
By Todd Ellsworth at 1:44 pm, Jun 12, 2018



Drawing Name: Port of Lewiston		Drawn By: Ron Glessner 05-15-18	
LEWISTON STORAGE			
SIZE	FSCM NO	DWG NO	REV
SCALE		SHEET 3	

REV.	DESCRIPTION	DATE	BY

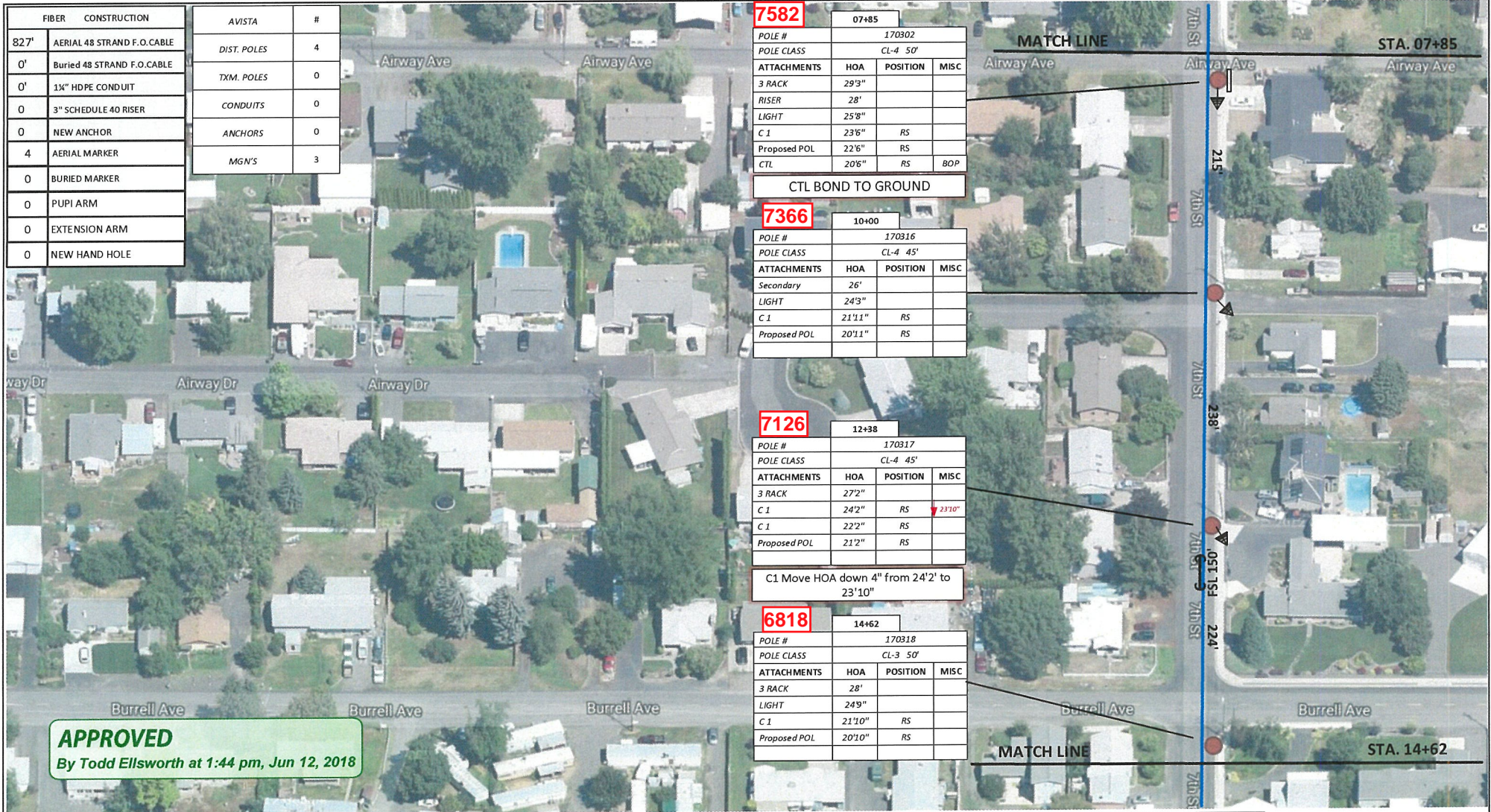
Contact Information
Port of Lewiston
Dave Doeringsfeld
208-743-5531
Outside Plant Maintenance, LLC
Ron Glessner 208-661-5648

State: ID
County: Nez Perce
City: Lewiston

Section:
Township:
Range:
Legal:



FIBER	CONSTRUCTION	AVISTA	#
827'	AERIAL 48 STRAND F.O.CABLE	DIST. POLES	4
0'	Buried 48 STRAND F.O.CABLE	TXM. POLES	0
0'	1 1/2" HDPE CONDUIT	CONDUITS	0
0	3" SCHEDULE 40 RISER	ANCHORS	0
0	NEW ANCHOR	MGN'S	3
4	AERIAL MARKER		
0	BURIED MARKER		
0	PUPI ARM		
0	EXTENSION ARM		
0	NEW HAND HOLE		



7582 07+85

POLE #	170302		
POLE CLASS	CL-4 50'		
ATTACHMENTS	HOA	POSITION	MISC
3 RACK	29'9"		
RISER	28'		
LIGHT	25'8"		
C 1	23'6"	RS	
Proposed POL	22'6"	RS	
CTL	20'6"	RS	BOP

CTL BOND TO GROUND

7366 10+00

POLE #	170316		
POLE CLASS	CL-4 45'		
ATTACHMENTS	HOA	POSITION	MISC
Secondary	26'		
LIGHT	24'3"		
C 1	21'11"	RS	
Proposed POL	20'11"	RS	

7126 12+38

POLE #	170317		
POLE CLASS	CL-4 45'		
ATTACHMENTS	HOA	POSITION	MISC
3 RACK	27'2"		
C 1	24'2"	RS	23'10"
C 1	22'2"	RS	
Proposed POL	21'2"	RS	

C1 Move HOA down 4" from 24'2" to 23'10"

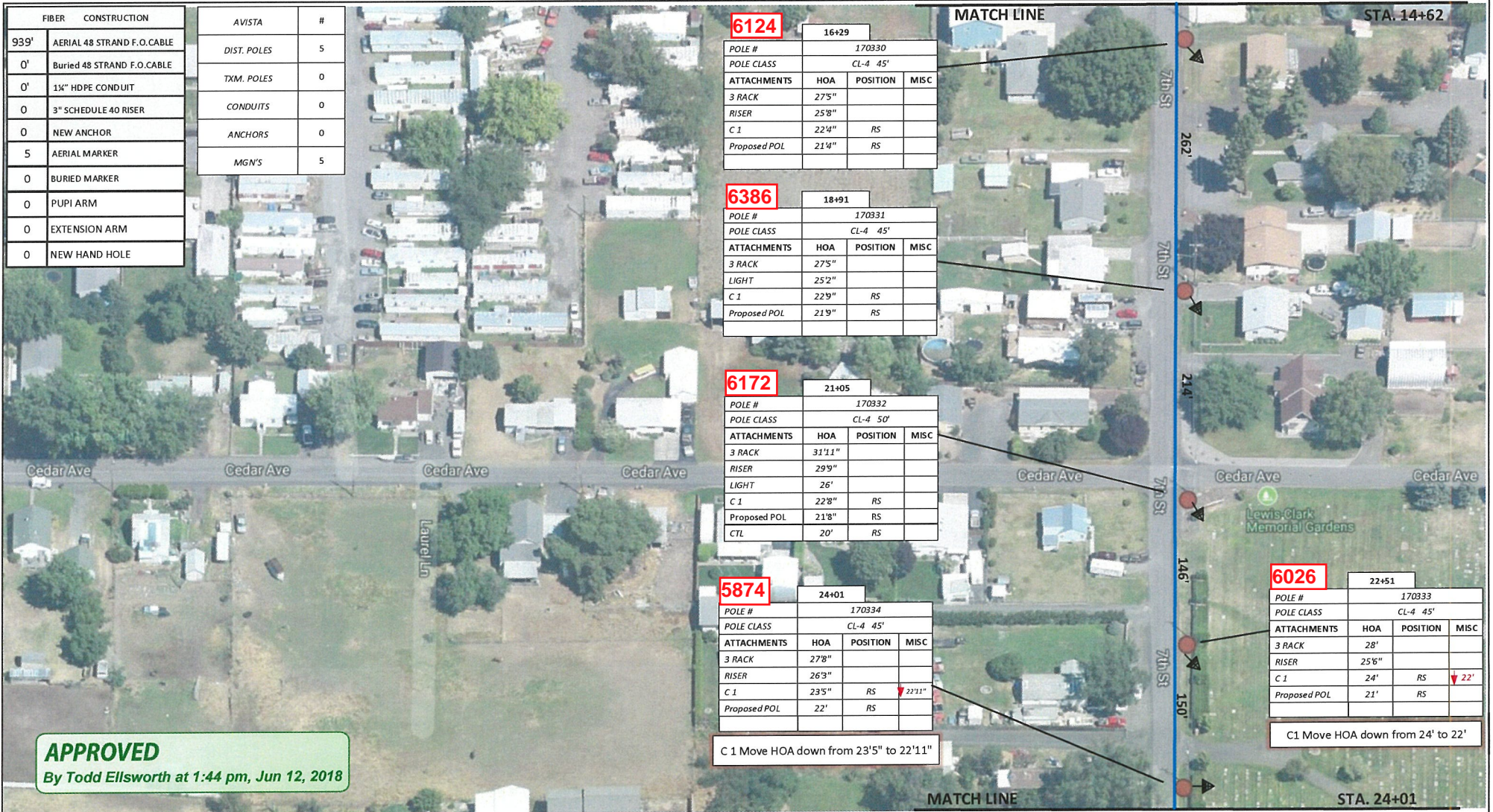
6818 14+62

POLE #	170318		
POLE CLASS	CL-3 50'		
ATTACHMENTS	HOA	POSITION	MISC
3 RACK	28'		
LIGHT	24'9"		
C 1	21'10"	RS	
Proposed POL	20'10"	RS	

APPROVED
By Todd Ellsworth at 1:44 pm, Jun 12, 2018

Drawing Name: Port of Lewiston		Drawn By: Ron Glessner 05-15-18				REV.		DESCRIPTION	DATE	BY	Contact Information		State: ID County: Nez Perce City: Lewiston		
		LEWISTON STORAGE				REV.		DESCRIPTION	DATE	BY	Port of Lewiston Dave Doeringsfeld 208-743-5531		Section:		
						REV.		DESCRIPTION	DATE	BY	Outside Plant Maintenance, llc		Township:		
						REV.		DESCRIPTION	DATE	BY	Ron Glessner 208-661-5648		Range:		
						REV.		DESCRIPTION	DATE	BY			Legal:		
SCALE		SHEET 4													

FIBER	CONSTRUCTION	AVISTA	#
939'	AERIAL 48 STRAND F.O.CABLE	DIST. POLES	5
0'	Buried 48 STRAND F.O.CABLE	TXM. POLES	0
0'	1X" HDPE CONDUIT	CONDUITS	0
0	3" SCHEDULE 40 RISER	ANCHORS	0
0	NEW ANCHOR	MGN'S	5
5	AERIAL MARKER		
0	BURIED MARKER		
0	PUPI ARM		
0	EXTENSION ARM		
0	NEW HAND HOLE		



6124 16+29

POLE #	170330		
POLE CLASS	CL-4 45'		
ATTACHMENTS	HOA	POSITION	MISC
3 RACK	27'5"		
RISER	25'8"		
C 1	22'4"	RS	
Proposed POL	21'4"	RS	

6386 18+91

POLE #	170331		
POLE CLASS	CL-4 45'		
ATTACHMENTS	HOA	POSITION	MISC
3 RACK	27'5"		
LIGHT	25'2"		
C 1	22'9"	RS	
Proposed POL	21'9"	RS	

6172 21+05

POLE #	170332		
POLE CLASS	CL-4 50'		
ATTACHMENTS	HOA	POSITION	MISC
3 RACK	31'11"		
RISER	29'9"		
LIGHT	26'		
C 1	22'8"	RS	
Proposed POL	21'8"	RS	
CTL	20'	RS	

5874 24+01

POLE #	170334		
POLE CLASS	CL-4 45'		
ATTACHMENTS	HOA	POSITION	MISC
3 RACK	27'8"		
RISER	26'3"		
C 1	23'5"	RS	22'11"
Proposed POL	22'	RS	

6026 22+51

POLE #	170333		
POLE CLASS	CL-4 45'		
ATTACHMENTS	HOA	POSITION	MISC
3 RACK	28'		
RISER	25'6"		
C 1	24'	RS	22'
Proposed POL	21'	RS	

C 1 Move HOA down from 23'5" to 22'11"

C1 Move HOA down from 24' to 22'

APPROVED
By Todd Ellsworth at 1:44 pm, Jun 12, 2018

Drawing Name: Port of Lewiston	Drawn By: Ron Glessner 05-15-18				REV.	DESCRIPTION	DATE	BY	Contact Information	State: ID County: Nez Perce City: Lewiston
	LEWISTON STORAGE									
SIZE	FSCM NO	DWG NO	REV	REV.	DESCRIPTION	DATE	BY	Scale	SHEET 5	
SCALE				REV.	DESCRIPTION	DATE	BY			

FIBER	CONSTRUCTION
526'	AERIAL 48 STRAND F.O.CABLE
595'	Buried 48 STRAND F.O.CABLE
595'	1½" HDPE CONDUIT
1	2" SCHEDULE 40 RISER
1	NEW ANCHOR
3	AERIAL MARKER
2	BURIED MARKER
0	PUPI ARM
0	EXTENSION ARM
0	NEW HAND HOLE

AVISTA	#
DIST. POLES	3
TXM. POLES	0
CONDUITS	0
ANCHORS	0
MGN'S	2

5716 25+58

POLE #	170335		
POLE CLASS	CL-4 45'		
ATTACHMENTS	HOA	POSITION	MISC
3 RACK	275"		
C 1	23'2"	RS	
Proposed POL	22'2"	RS	

5480 27+11

POLE #	170336		
POLE CLASS	CL-4 50'		
ATTACHMENTS	HOA	POSITION	MISC
3 RACK	27'10"		
LIGHT	24'4"		
C 1	22'10"	RS	22'6"
Proposed POL	21'6"	RS	

C 1 Move HOA down 4" to 22'6"

5414 27+77

POLE #	170352		
POLE CLASS	CL-3 50'		
ATTACHMENTS	HOA	POSITION	MISC
RISER	28'		
C 1	22'8"	RS	
Proposed POL	21'8"	RS	

POL Place new anchor south side.
Min. 6' to existing anchor.

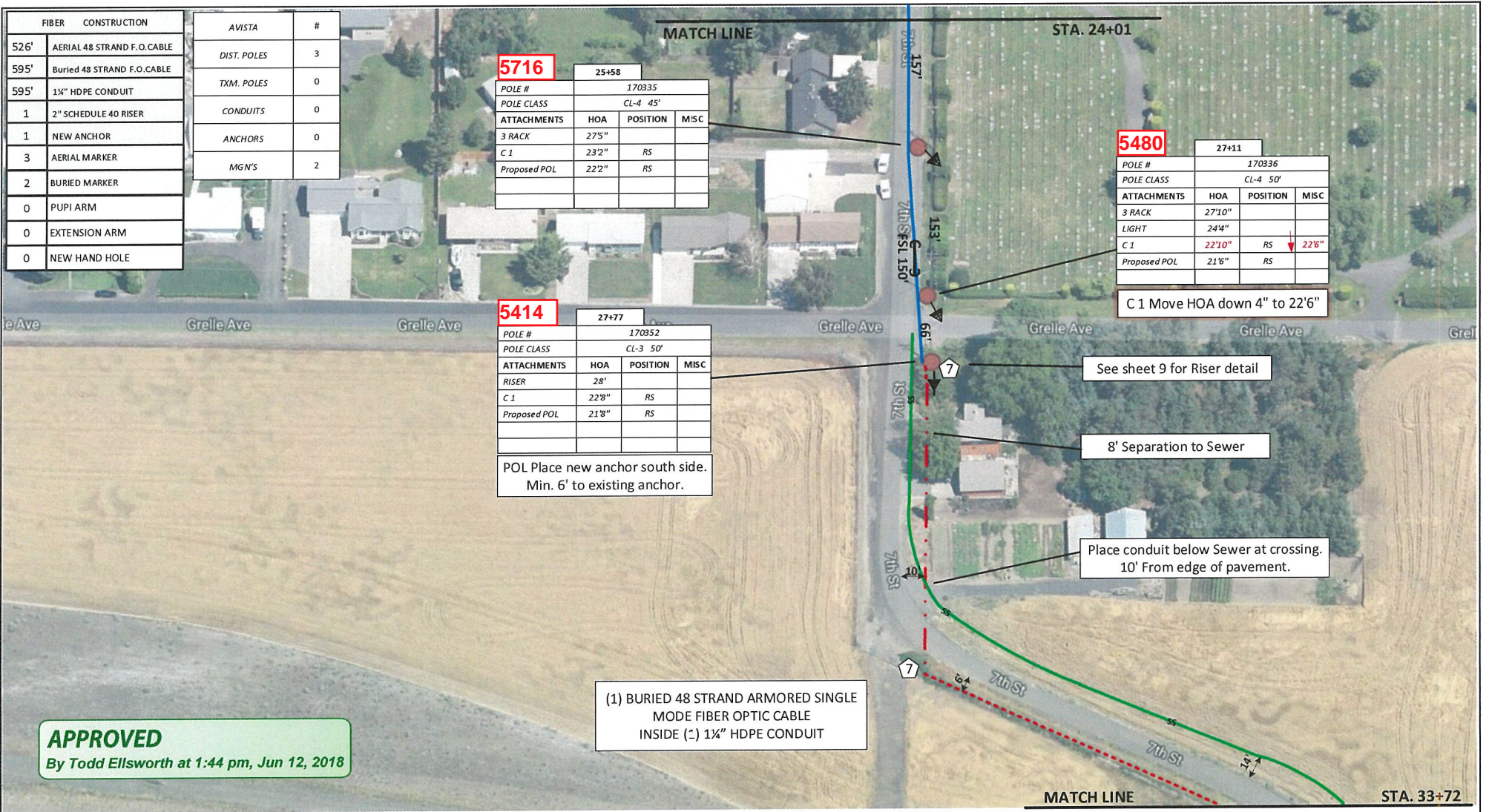
See sheet 9 for Riser detail

8' Separation to Sewer

Place conduit below Sewer at crossing.
10' From edge of pavement.

(1) BURIED 48 STRAND ARMORED SINGLE
MODE FIBER OPTIC CABLE
INSIDE (±) 1½" HDPE CONDUIT

APPROVED
By Todd Ellsworth at 1:44 pm, Jun 12, 2018



Drawing Name: Port of Lewiston	
SIZE	SCALE

Drawn By: Ron Glessner 05-15-18			
LEWISTON STORAGE			
FSCM NO	DWG NO	REV	
			SHEET 6

REV.	DESCRIPTION	DATE	BY

Contact Information
 Port of Lewiston
 Dave Doeringsfeld
 208-743-5531
 Outside Plant Maintenance, llc
 Ron Glessner 208-661-5648

State: ID
 County: Nez Perce
 City: Lewiston
 Section:
 Township:
 Range:
 Legal:



FIBER	CONSTRUCTION
0'	AERIAL 48 STRAND F.O.CABLE
790'	Buried 48 STRAND F.O.CABLE
790'	1 1/2" HDPE CONDUIT
0	3" SCHEDULE 40 RISER
0	NEW ANCHOR
0	AERIAL MARKER
2	BURIED MARKER
0	PUPI ARM
0	EXTENSION ARM
0	NEW HAND HOLE

(1) BURIED 48 STRAND ARMORED SINGLE
MODE FIBER OPTIC CABLE
INSIDE (1) 1 1/2" HDPE CONDUIT
PLACE 6' FROM EDGE OF PAVEMENT

APPROVED

By Todd Ellsworth at 1:44 pm, Jun 12, 2018

Drawing Name: Port of Lewiston		Drawn By: Ron Glessner 05-15-18				REV. DESCRIPTION DATE BY				Contact Information		State: ID County: Nez Perce City: Lewiston	
		LEWISTON STORAGE				REV. DESCRIPTION DATE BY				Port of Lewiston Dave Doeringsfeld 208-743-5531 Outside Plant Maintenance, llc Ron Glessner 208-661-5648		Section: Township: Range: Legal:	
SIZE	FSCM NO	DWG NO		REV	REV. DESCRIPTION DATE BY								
SCALE		SHEET 7		REV. DESCRIPTION DATE BY									



FIBER	CONSTRUCTION
0'	AERIAL 48 STRAND F.O.CABLE
1242'	Buried 48 STRAND F.O.CABLE
992'	1 1/2" HDPE CONDUIT
0	3" SCHEDULE 40 RISER
0	NEW ANCHOR
0	AERIAL MARKER
2	BURIED MARKER
0	PUPU ARM
0	EXTENSION ARM
1	NEW HAND HOLE

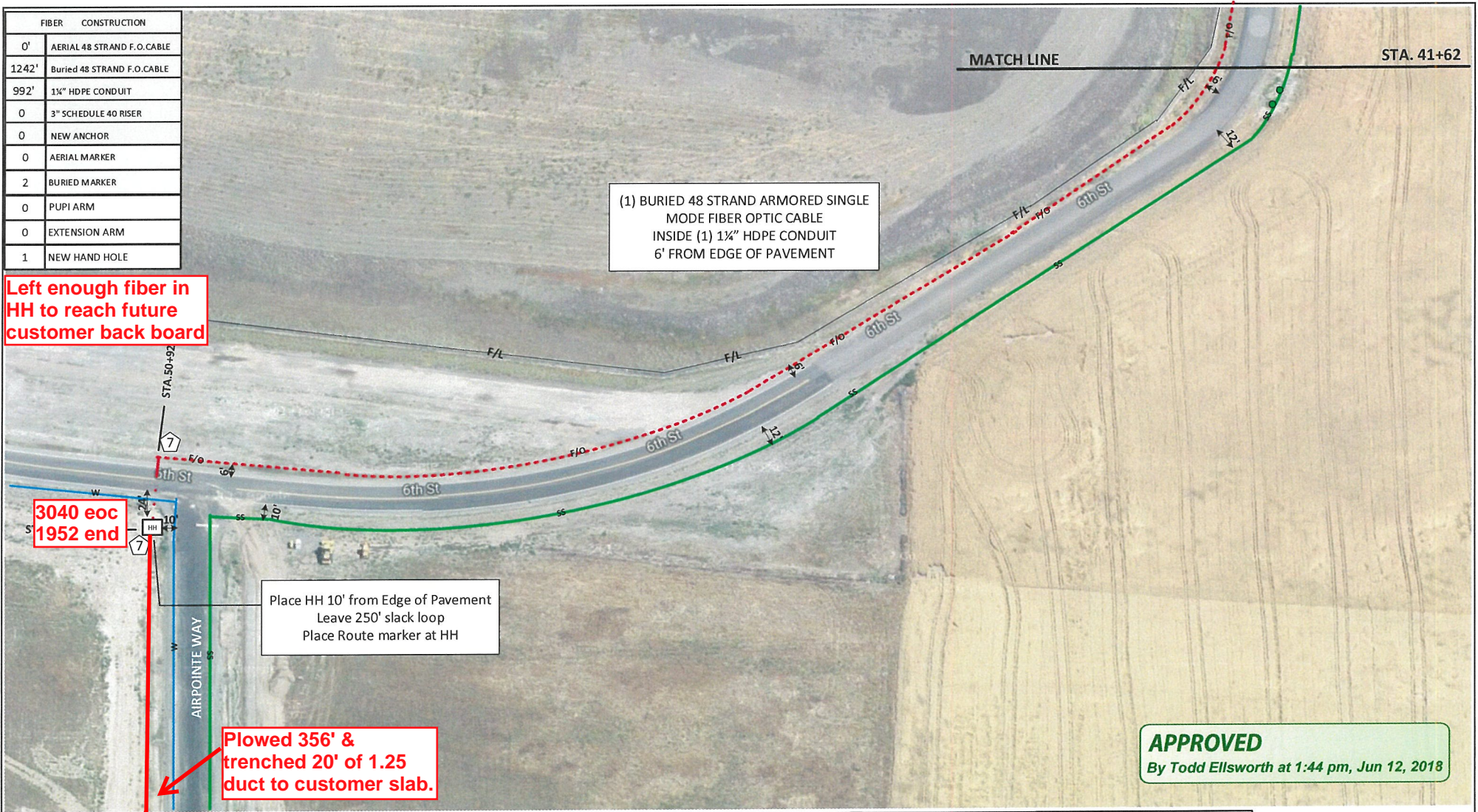
Left enough fiber in HH to reach future customer back board

**3040 eoc
1952 end**

**Plowed 356' &
trenched 20' of 1.25
duct to customer slab.**

Place HH 10' from Edge of Pavement
Leave 250' slack loop
Place Route marker at HH

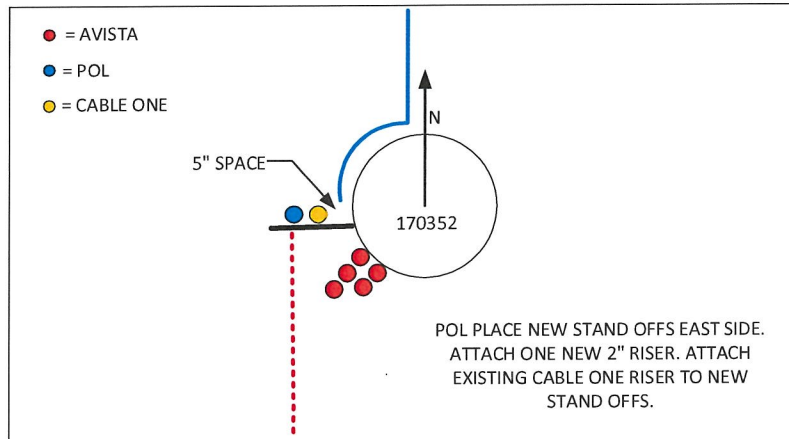
(1) BURIED 48 STRAND ARMORED SINGLE
MODE FIBER OPTIC CABLE
INSIDE (1) 1 1/2" HDPE CONDUIT
6' FROM EDGE OF PAVEMENT



APPROVED
By Todd Ellsworth at 1:44 pm, Jun 12, 2018

Drawing Name: Port of Lewiston		Drawn By: Ron Glessner 05-15-18				Contact Information		State: ID County: Nez Perce City: Lewiston	
		LEWISTON STORAGE				Port of Lewiston Dave Doeringsfeld 208-743-5531		Section:	
						Outside Plant Maintenance, llc Ron Glessner 208-661-5648		Township:	
SIZE	FSCM NO	DWG NO	REV	REV.	DESCRIPTION	DATE	BY	Range:	
SCALE			SHEET 8	REV.	DESCRIPTION	DATE	BY	Legal:	





APPROVED

By Todd Ellsworth at 1:44 pm, Jun 12, 2018

Drawing Name: Port of Lewiston		Drawn By: Ron Glessner 05-15-18				Contact Information				State: ID County: Nez Perce City: Lewiston	
		LEWISTON STORAGE				Port of Lewiston Dave Doeringsfeld 208-743-5531				Section:	
SIZE	FSCM NO	DWG NO		REV	REV.	DESCRIPTION	DATE	BY	Outside Plant Maintenance, llc	Township:	
					REV.	DESCRIPTION	DATE	BY	Ron Glessner 208-661-5648	Range:	
SCALE		SHEET 9			REV.	DESCRIPTION	DATE	BY		Legal:	



