

Drawing Name: Port of Lewiston		Drawn By: Ron Glessner 04-03-18	
2310 THAIN GRADE			
SIZE	FSCMNO	DWG NO	REV
SCALE		SHEET 1	

REV.	DESCRIPTION	DATE	BY

Contact Information

Port of Lewiston
 Dave Doeringsfeld
 208-743-5531
 Outside Plant Maintenance, llc
 Ron Glessner 208-661-5648

State: ID
 County: Nez Perce
 City: Lewiston

Section:
 Township:
 Range:
 Legal:



GENERAL CONSTRUCTION NOTES

CONTRACTOR IS RESPONSIBLE FOR ALL PERMITS EXCEPT STATE HWY., COUNTY ROAD,RAILROAD OR WATER CROSSINGS.

RESTORATION OF ALL RIGHT OF WAY GROUND WILL BE RESTORED TO ORIGINAL CONDITION OR BETTER.

CONTRACTOR WILL COORDINATE WITH OSP MANAGER 24 HRS. PRIOR TO BEGINNING CONSTRUCTION.

OSP MANAGER WILL CONTACT BUILDING OWNER/TENANT 24 HRS. PRIOR TO BEGINNING CONSTRUCTION TO COORDINATE ACCESS TO BUILDINGS.

CONTRACTOR IS RESPONSIBLE FOR CALLING LOCATES AND IS RESPONSIBLE FOR REPAIR AND RESTORATION OF DAMAGED UTILITIES.

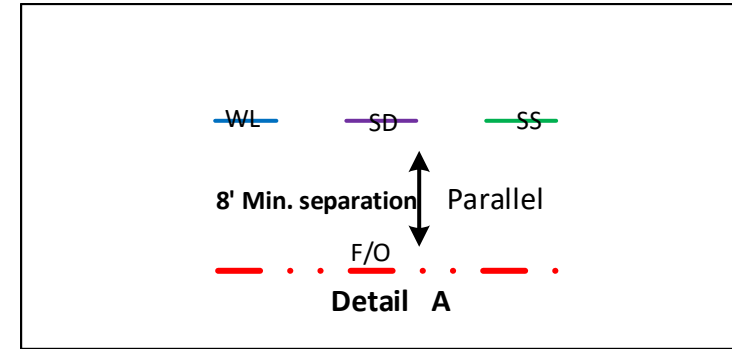
FOLLOW ALL NESC CONSTRUCTION GUIDELINES.

CONTRACTOR WILL HAVE ON SITE THE APPROVED DRAWINGS FROM THE UTILITY AND OR STATE,COUNTY,CITY,RAILROAD.

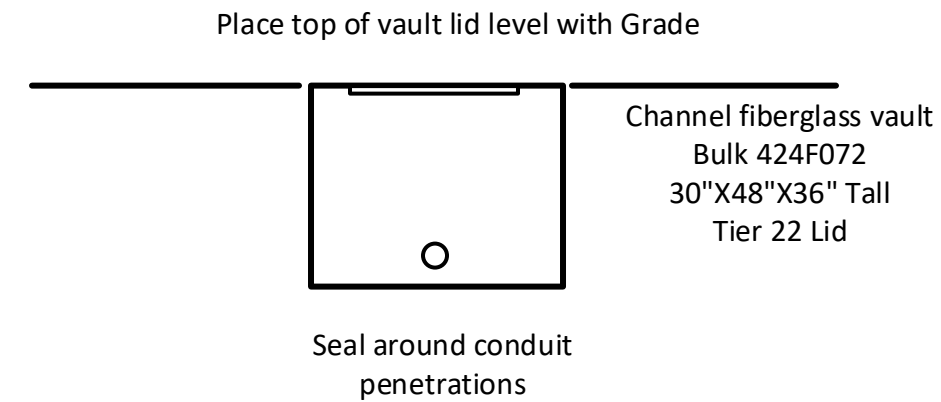
CONTRACTOR WILL PROVIDE CONDUIT , HAND HOLES , ANCHORS, AERIAL HARDWARE , LOCATE WIRE

PORT OF LEWISTON (POL) WILL PROVIDE , FIBER OPTIC CABLE , AERIAL MARKERS , AND LINE ROUTE MARKERS.

	CULVERT
	DIRECTIONAL BORE
	EXISTING CONDUIT
	BURIED CABLE
	NEW ANCHOR
	SIDEWALK ANCHOR
	EXISTING ANCHOR
	OVERHEAD GUY
	ATTACH TO POLE GROUND
	FIBER SLACK LOOP
	JOINT USE POLE
	CABLE CHANGE
	BURIED ROUTE MARKER
	EXISTING HAND HOLE
	NEW HAND HOLE



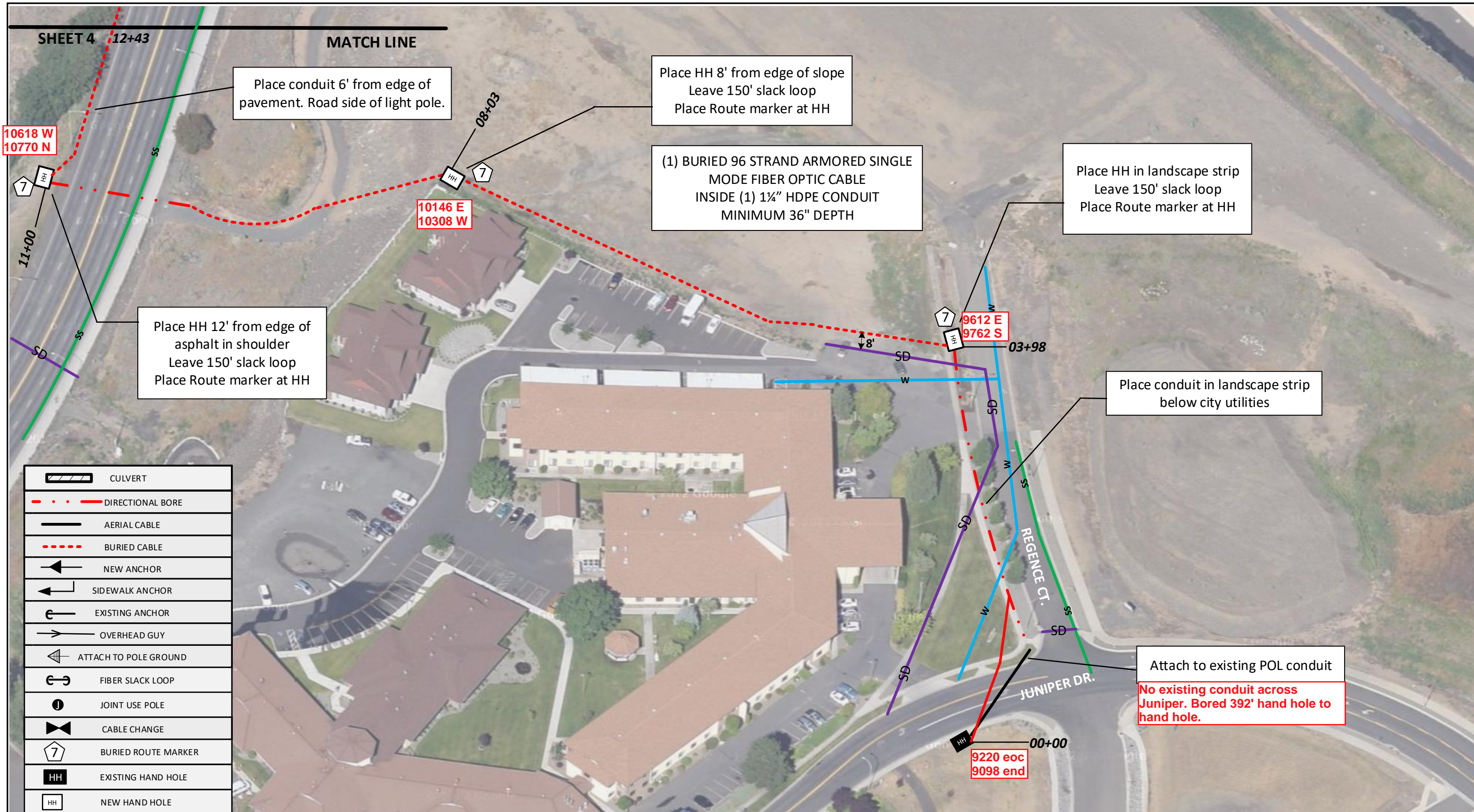
Vault/ Hand Hole Detail



FIBER	CONSTRUCTION
0'	AERIAL 96 STRAND F.O.CABLE
3779'	Buried 96 STRAND F.O.CABLE
2779'	1 1/2" HDPE CONDUIT
1	3" SCHEDULE 40 RISER
0	NEW ANCHOR
0	AERIAL MARKER
7	BURIED MARKER
0	PUPI ARM
0	EXTENSION ARM
6	NEW HAND HOLE

Drawing Name:Port of Lewiston		Drawn By:Ron Glessner 04-03-18				Contact Information				State:ID. County:Nez Perce City:Lewiston		
		2310 THAIN GRADE				Port of Lewiston Dave Doeringsfeld 208-743-5531				Section: Township: Range: Legal:		
						Outside Plant Maintenance,llc Ron Glessner208-661-5648						
SIZE	FSCMNO	DWG NO		REV	REV.	DESCRIPTION	DATE	BY	REV.	DESCRIPTION	DATE	BY
SCALE	No scale	SHEET 2			REV.	DESCRIPTION	DATE	BY	REV.	DESCRIPTION	DATE	BY





Drawing Name: Port of Lewiston

Drawn By: Ron Glessner 04-03-18

2310 THAIN GRADE

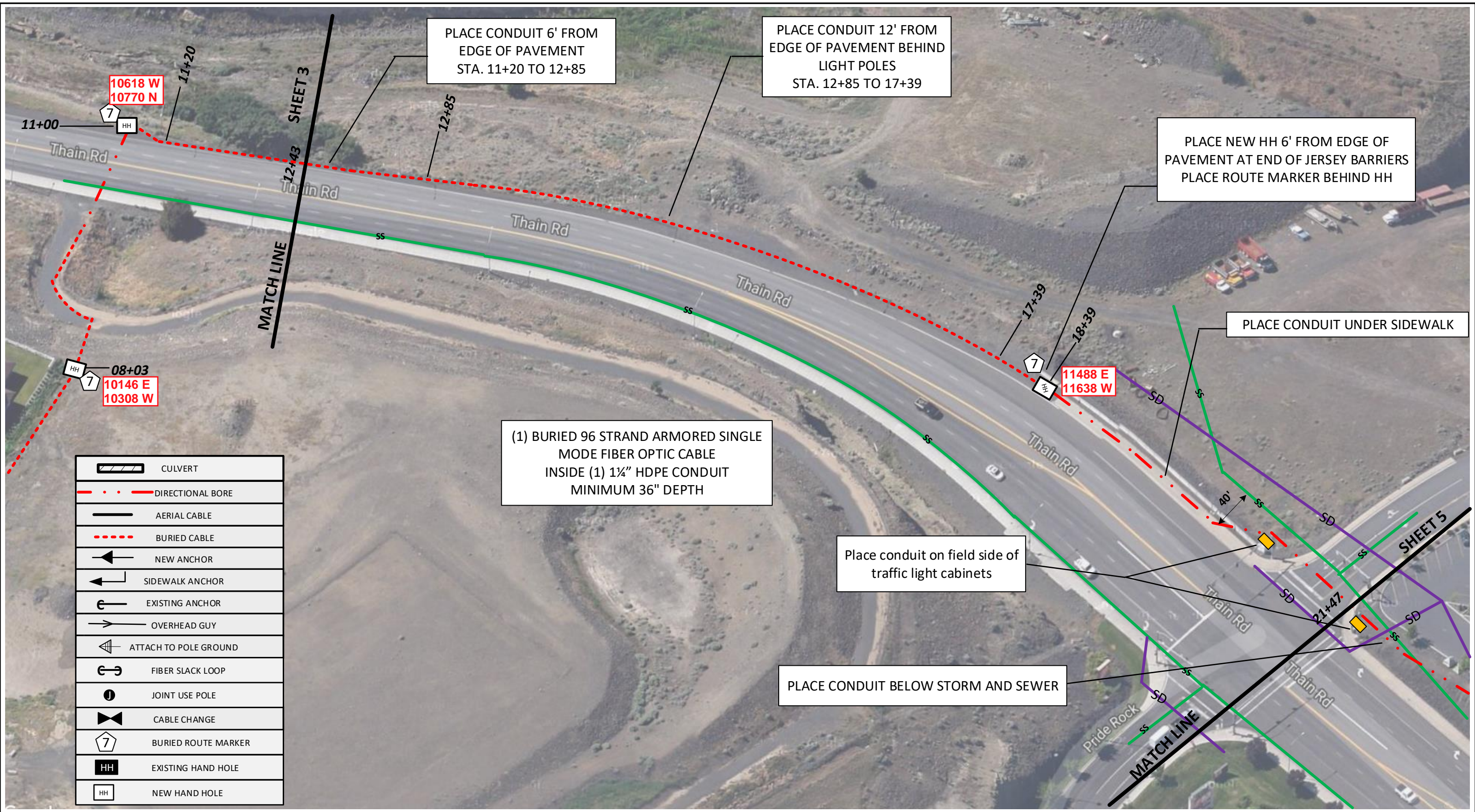
SIZE	FSCMNO	DWG NO	REV
SCALE		SHEET 3	

REV.	DESCRIPTION	DATE	BY

Contact Information
 Port of Lewiston
 Dave Doeringsfeld
 208-743-5531
 Outside Plant Maintenance, llc
 Ron Glessner 208-661-5648

State: ID
 County: Nez Perce
 City: Lewiston
 Section:
 Township:
 Range:
 Legal:





	CULVERT
	DIRECTIONAL BORE
	AERIAL CABLE
	BURIED CABLE
	NEW ANCHOR
	SIDEWALK ANCHOR
	EXISTING ANCHOR
	OVERHEAD GUY
	ATTACH TO POLE GROUND
	FIBER SLACK LOOP
	JOINT USE POLE
	CABLE CHANGE
	BURIED ROUTE MARKER
	EXISTING HAND HOLE
	NEW HAND HOLE

(1) BURIED 96 STRAND ARMORED SINGLE MODE FIBER OPTIC CABLE
INSIDE (1) 1 1/4" HDPE CONDUIT
MINIMUM 36" DEPTH

Drawing Name: Port of Lewiston

Drawn By: Ron Glessner 04-03-18

2310 THAIN GRADE

SIZE	FSCMNO	DWG NO	REV
SCALE		SHEET 4	

REV.	DESCRIPTION	DATE	BY

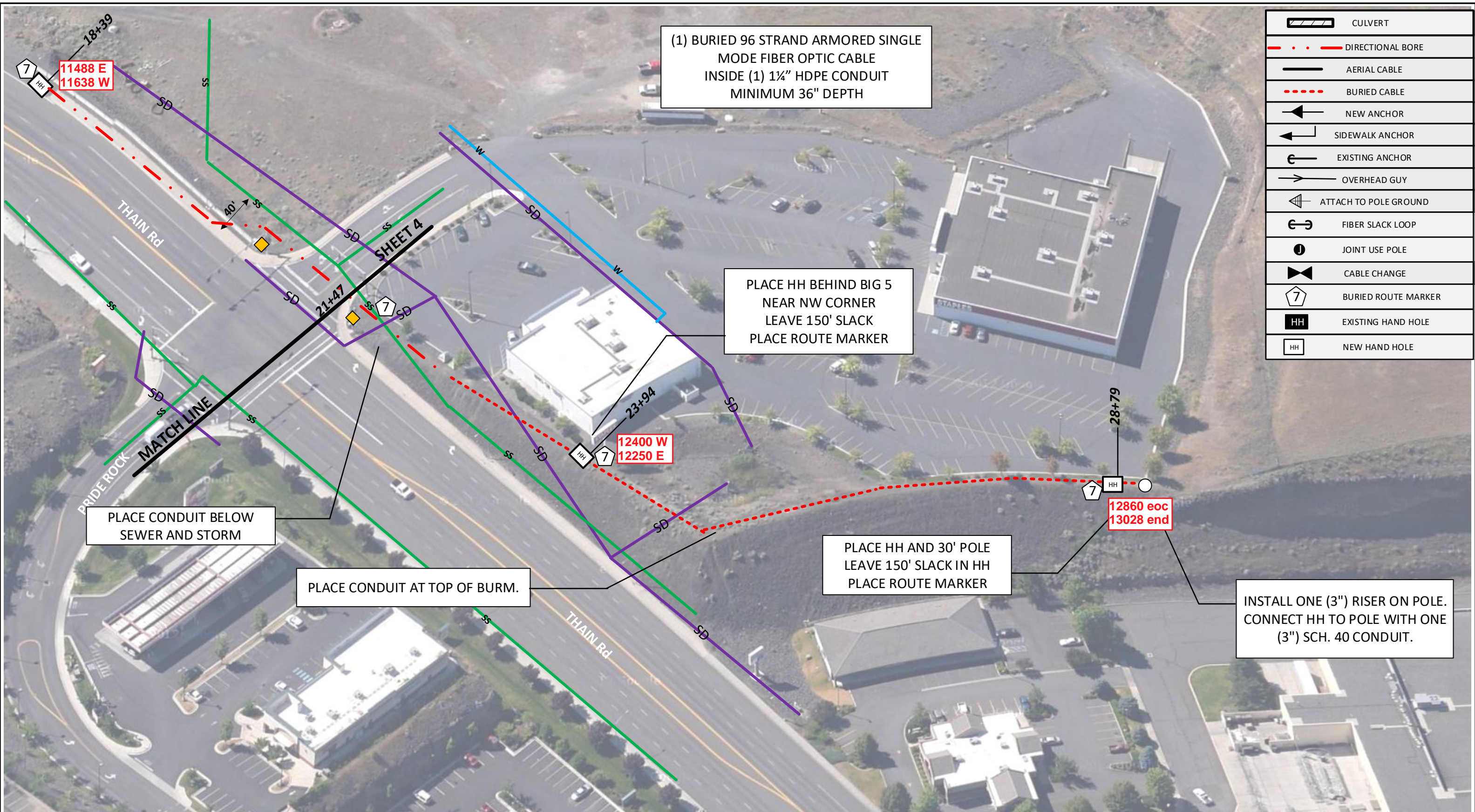
Contact Information

 Port of Lewiston
 Dave Doeringsfeld
 208-743-5531
 Outside Plant Maintenance, llc
 Ron Glessner 208-661-5648

State: ID
 County: Nez Perce
 City: Lewiston

 Section:
 Township:
 Range:
 Legal:





(1) BURIED 96 STRAND ARMORED SINGLE MODE FIBER OPTIC CABLE INSIDE (1) 1 1/4" HDPE CONDUIT MINIMUM 36" DEPTH

PLACE HH BEHIND BIG 5 NEAR NW CORNER LEAVE 150' SLACK PLACE ROUTE MARKER

PLACE CONDUIT BELOW SEWER AND STORM

PLACE CONDUIT AT TOP OF BURM.

PLACE HH AND 30' POLE LEAVE 150' SLACK IN HH PLACE ROUTE MARKER

INSTALL ONE (3") RISER ON POLE. CONNECT HH TO POLE WITH ONE (3") SCH. 40 CONDUIT.

	CULVERT
	DIRECTIONAL BORE
	AERIAL CABLE
	BURIED CABLE
	NEW ANCHOR
	SIDEWALK ANCHOR
	EXISTING ANCHOR
	OVERHEAD GUY
	ATTACH TO POLE GROUND
	FIBER SLACK LOOP
	JOINT USE POLE
	CABLE CHANGE
	BURIED ROUTE MARKER
	EXISTING HAND HOLE
	NEW HAND HOLE

Drawing Name: Port of Lewiston		Drawn By: Ron Glessner 04-03-18	
2310 THAIN GRADE			
SIZE	FSCMNO	DWG NO	REV
SCALE			SHEET 5

REV.	DESCRIPTION	DATE	BY

Contact Information Port of Lewiston Dave Doeringsfeld 208-743-5531 Outside Plant Maintenance, llc Ron Glessner 208-661-5648	State: ID County: Nez Perce City: Lewiston Section: Township: Range: Legal:
---	---

