

FIBER CONSTRUCTION	
UNIT DESCRIPTION	AMT
Existing 2" Conduit	5065'
New 1 1/2" Conduit	165'
2" - THREE CELL MAXCELL	5230'
96 STRAND FIBER OPTIC CABLE	6430'
NEW HAND HOLE	1

**Contacts:**

Avista:  
 Steve Schulte:509-495-2548  
 Todd Ellsworth:509-495-2773

Cable One:  
 Dan Smith:509-791-5031

Century Link:  
 Julio Mendez:208-798-8390

X O Communications:  
 Steve Styren: 509-444-8547

Outside Plant Maintenance:  
 Ron Glessner:208-661-5648

Port of Lewiston:  
 JAYNIE BENTZ:  
 208-743-5531

<b>Drawing Name: Port of Lewiston</b>		Fielded by Ron Glessner 02-21-2017	
<b>POL EXISTING CONDUIT</b>			
SIZE	FSCMNO		REV
SCALE		SHEET	Cover

REV.	DESCRIPTION	DATE	BY

Contact Information

Port of Lewiston  
 JAYNIE BENTZ  
 208-743-5531  
 Outside Plant Maintenance, llc  
 Ron Glessner208-661-5648

State:ID  
 County:Nez Perce  
 City:Lewiston

Section:  
 Township:  
 Range:  
 Legal:



**GENERAL CONSTRUCTION NOTES**

CONTRACTOR IS RESPONSIBLE FOR ALL PERMITS EXCEPT STATE HWY., COUNTY ROAD,RAILROAD OR WATER CROSSINGS.

RESTORATION OF ALL RIGHT OF WAY GROUND WILL BE RESTORED TO ORIGINAL CONDITION OR BETTER.

CONTRACTOR WILL COORDINATE WITH OSP MANAGER 24 HRS. PRIOR TO BEGINNING CONSTRUCTION.

OSP MANAGER WILL CONTACT BUILDING OWNER/TENANT 24 HRS. PRIOR TO BEGINNING CONSTRUCTION TO COORDINATE ACCESS TO BUILDINGS.

CONTRACTOR IS RESPONSIBLE FOR CALLING LOCATES AND IS RESPONSIBLE FOR REPAIR AND RESTORATION OF DAMAGED UTILITIES.

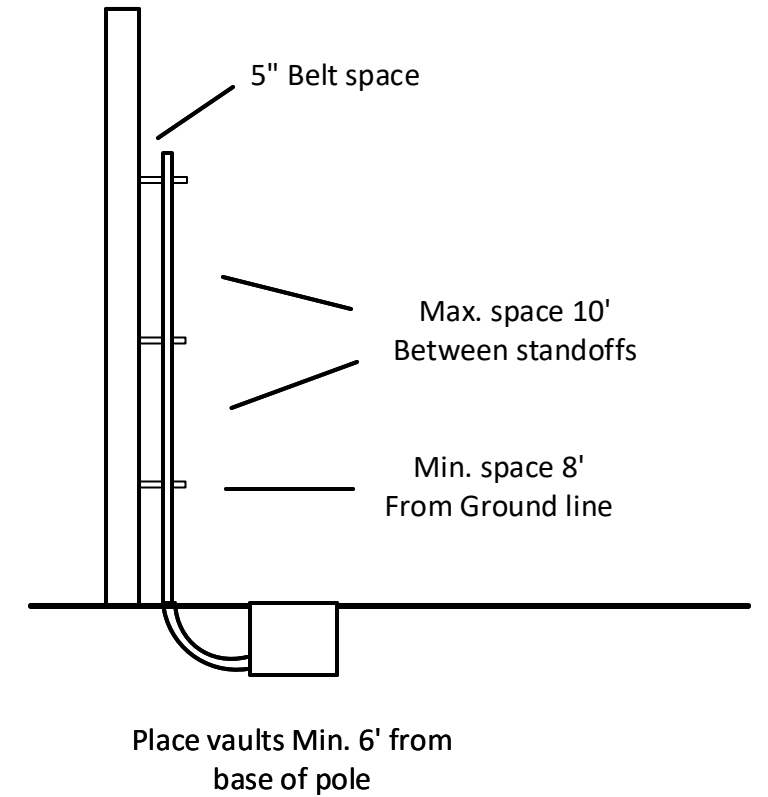
FOLLOW ALL NESC CONSTRUCTION GUIDELINES.

BURIED CONDUIT MUST CROSS UNDERNEATH ALL CITY UTILITIES

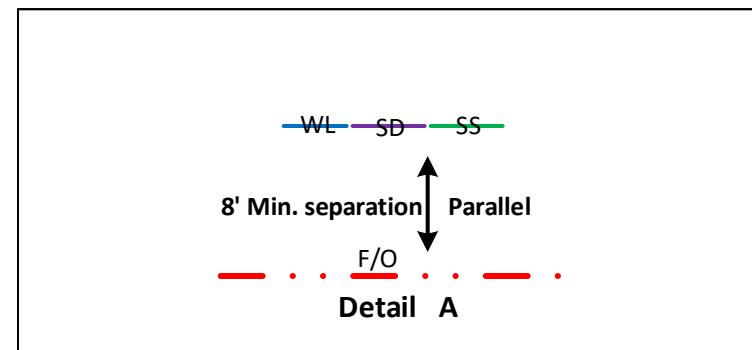
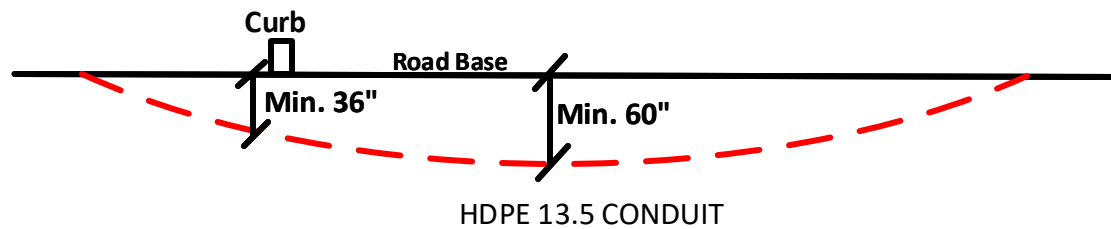
CONTRACTOR WILL HAVE ON SITE THE APPROVED DRAWINGS FROM THE UTILITY AND OR STATE,COUNTY,CITY,RAILROAD.

CONTRACTOR WILL PROVIDE CONDUIT AND HAND HOLES

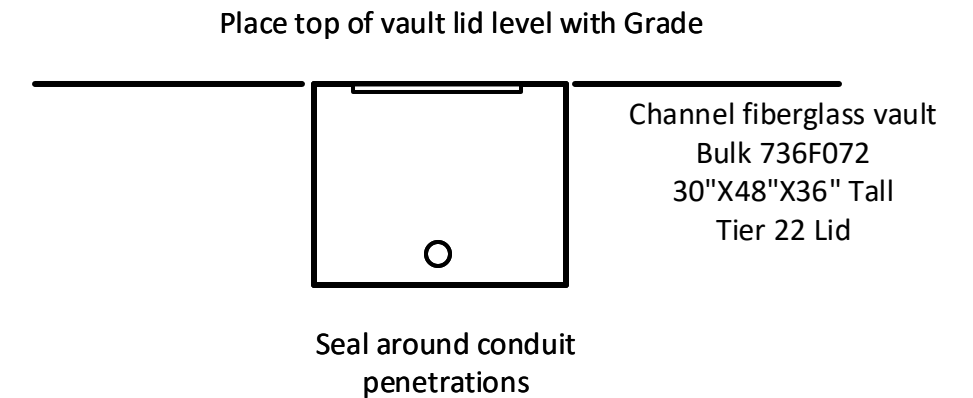
**Riser Detail**



**Road crossing Detail**



**Vault/ Hand Hole Detail**



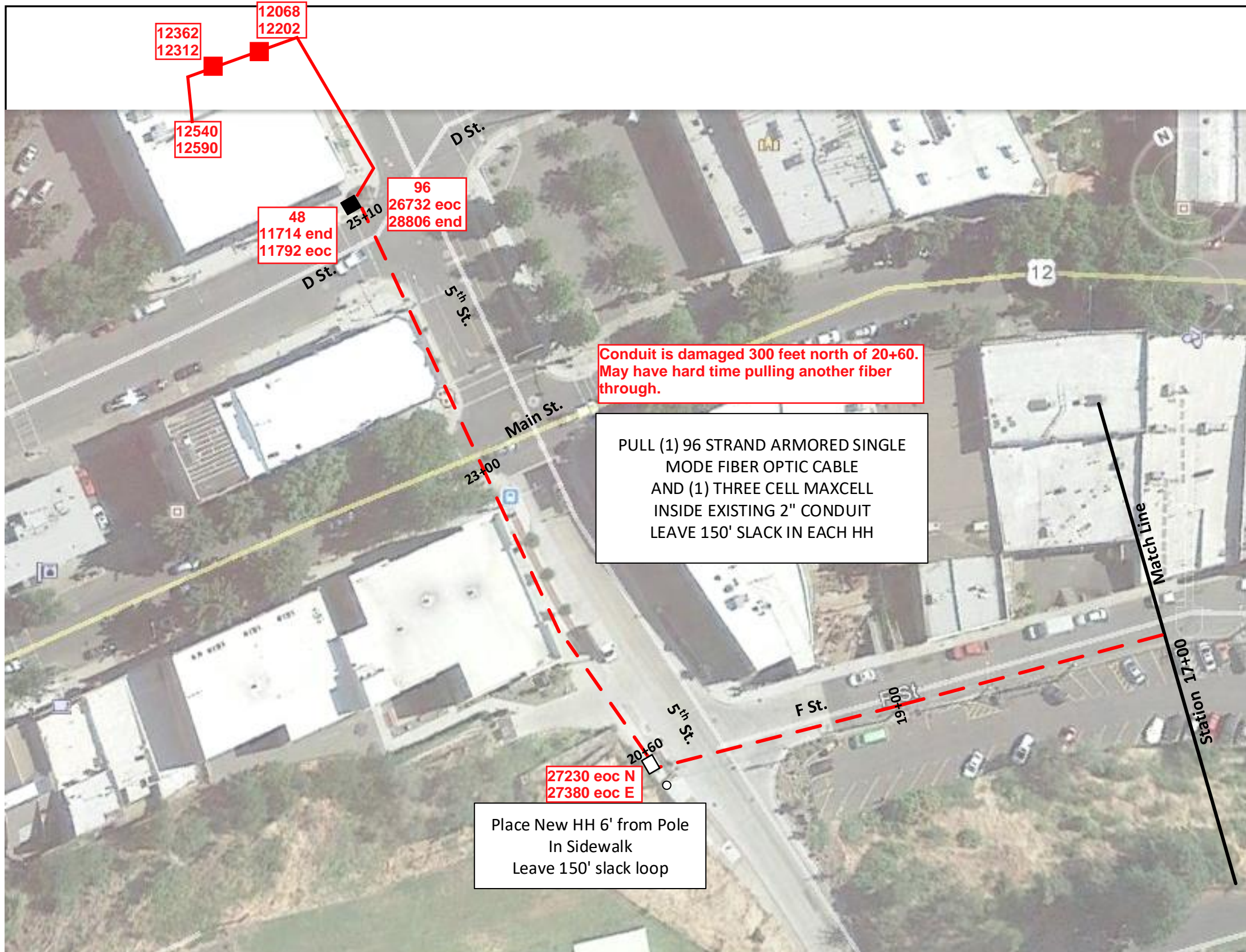
<b>Drawing Name:Port of Lewiston</b>		Drawn By:Ron Glessner 02-21-2017	
<b>POL EXISTING CONDUIT</b>			
SIZE	FSCMNO	DWG NO	REV
SCALE	No scale	Construction notes	

REV.	DESCRIPTION	DATE	BY

<b>Contact Information</b>		State:ID County:Nez Perce City:Lewiston
Port of Lewiston JAYNIE BENTZ 208-753-5531 Outside Plant Maintenance, llc Ron Glessner208-661-5648		Section: Township: Range: Legal:







Existing 2" Sch. 40 PVC conduit - - - - -

Existing Hand Hole

New Hand Hole

FIBER CONSTRUCTION	
UNIT DESCRIPTION	AMT
2"- THREE CELL MAXCELL	810'
96 STRAND FIBER OPTIC CABLE	960'
NEW FIBER HH	1
EXISTING 2" CONDUIT	810'

Conduit is damaged 300 feet north of 20+60.  
May have hard time pulling another fiber through.

PULL (1) 96 STRAND ARMORED SINGLE MODE FIBER OPTIC CABLE AND (1) THREE CELL MAXCELL INSIDE EXISTING 2" CONDUIT LEAVE 150' SLACK IN EACH HH

Place New HH 6' from Pole In Sidewalk Leave 150' slack loop

Drawing Name: Port of Lewiston		Drawn By: Ron Glessner 02-21-17							Contact Information				State: ID County: Nez Perce City: Lewiston				
		<b>POL EXISTING CONDUIT</b>							Port of Lewiston Dave Doeringsfeld 208-753-5531 Outside Plant Maintenance, llc Ron Glessner 208-661-5648				Section: Township: Range: Legal:				
		SIZE	FSCMNO	DWG NO	REV	REV.	DESCRIPTION	DATE									BY
		SCALE 1inch=60feet		SHEET 1 OF 4													





EXISTING 2" Sch. 40 PVC conduit 

EXISTING HAND HOLE 



FIBER CONSTRUCTION	
UNIT DESCRIPTION	AMT
2" THREE CELL MAXCELL	1190'
96 STRAND FIBER OPTIC CABLE	1490'
EXISTING 2" CONDUIT	1190'

PULL (1) 96 STRAND ARMORED SINGLE MODE FIBER OPTIC CABLE AND (1) THREE CELL MAXCELL INSIDE EXISTING 2" CONDUIT LEAVE 150' SLACK IN EACH HH

Drawing Name: Port of Lewiston

Drawn By: Ron Glessner 02-21-17

**POL EXISTING CONDUIT**

SIZE	FSCMNO	DWG NO	REV
SCALE	1inch=60feet	SHEET 2 of 4	

REV.	DESCRIPTION	DATE	BY

Contact Information

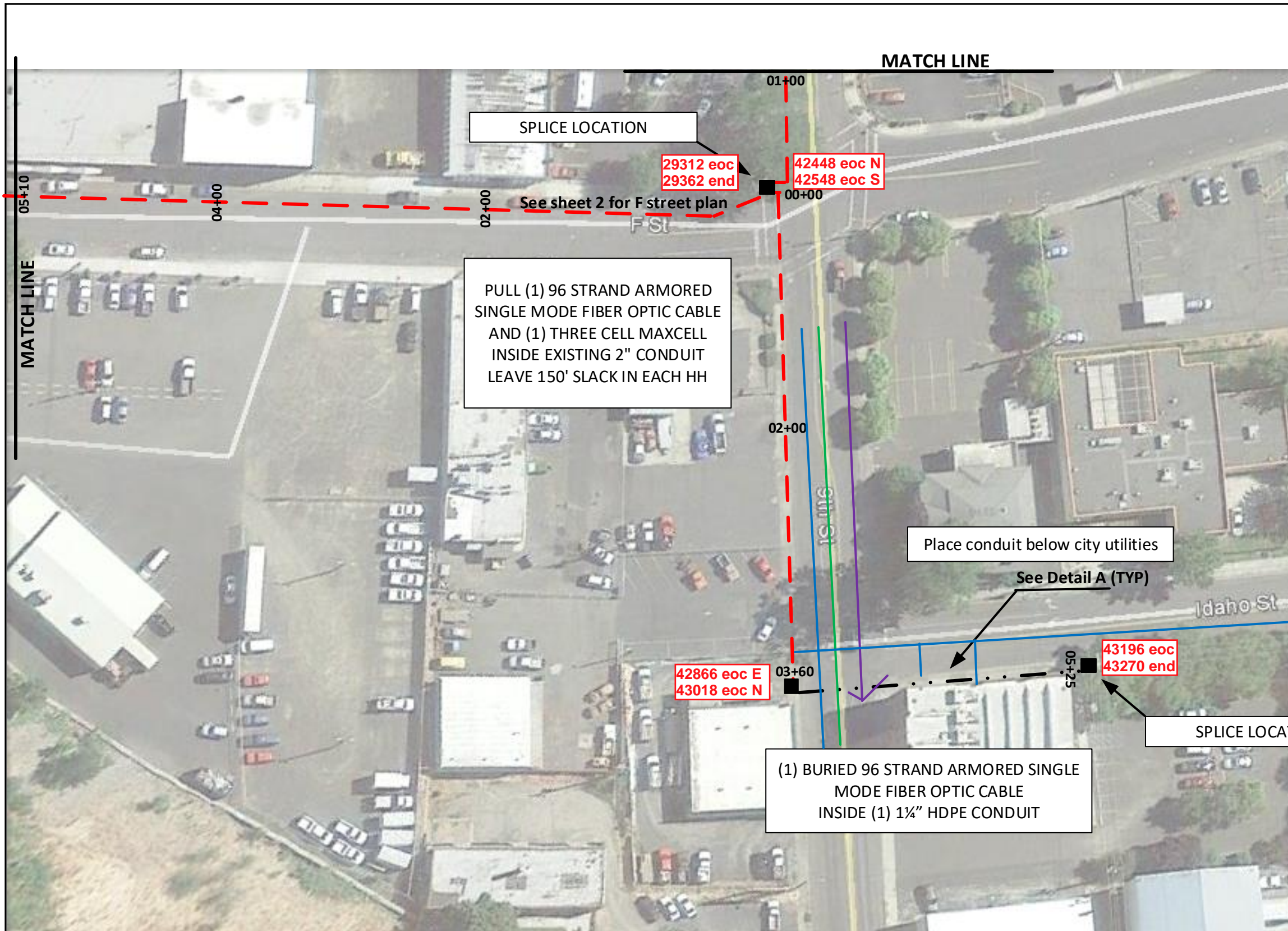
Port of Lewiston  
 Dave Doeringsfeld  
 208-753-5531  
 Outside Plant Maintenance, llc  
 Ron Glessner 208-661-5648

State: ID  
 County: Nez Perce  
 City: Lewiston

Section:  
 Township:  
 Range:  
 Legal:





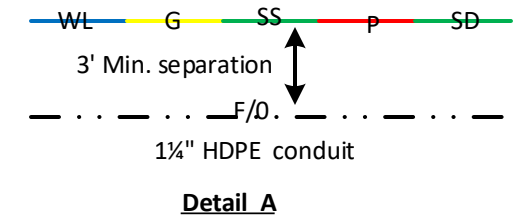


Existing 2" Sch.40 PVC Conduit - - - - -

Existing Hand Hole ■

Directional Drill 1 1/4" HDPE Conduit - . . - . .

FIBER CONSTRUCTION	
UNIT DESCRIPTION	AMT
Existing 2" Conduit	970'
New 1 1/4" Conduit	165'
2" - THREE CELL MAXCELL	1135'
96 STRAND FIBER OPTIC CABLE	1585'



<b>Drawing Name: Port of Lewiston</b>		Drawn By: Ron Glessner 02-21-17	
<b>POL Existing Conduit</b>			
SIZE	FSCMNO	DWG NO	REV
SCALE	1 inch=60 feet	SHEET 3 of 4	

REV.	DESCRIPTION	DATE	BY

Contact Information

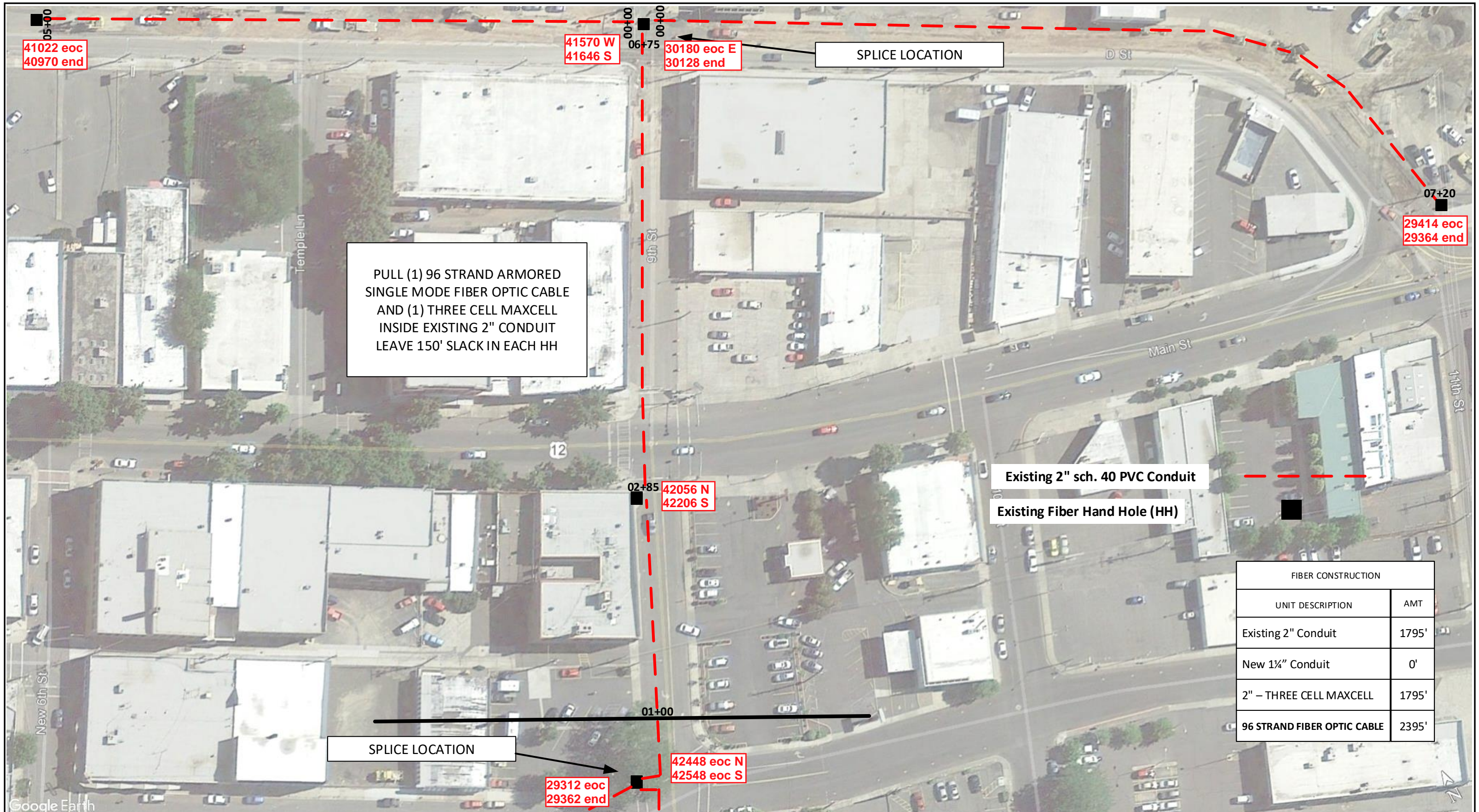
Port of Lewiston  
 Dave Doeringsfeld  
 208-753-5531  
 Outside Plant Maintenance, llc  
 Ron Glessner 208-661-5648

State: ID  
 County: Nez Perce  
 City: Lewiston

Section:  
 Township:  
 Range:  
 Legal:







PULL (1) 96 STRAND ARMORED SINGLE MODE FIBER OPTIC CABLE AND (1) THREE CELL MAXCELL INSIDE EXISTING 2" CONDUIT LEAVE 150' SLACK IN EACH HH

Existing 2" sch. 40 PVC Conduit  
Existing Fiber Hand Hole (HH)

FIBER CONSTRUCTION	
UNIT DESCRIPTION	AMT
Existing 2" Conduit	1795'
New 1 1/4" Conduit	0'
2" - THREE CELL MAXCELL	1795'
96 STRAND FIBER OPTIC CABLE	2395'

Drawing Name: Port of Lewiston

Drawn By: Ron Glessner 02-21-17

**POL Existing Conduit**

SIZE	FSCMNO	DWG NO	REV
SCALE	1inch = 60 feet	SHEET 4 of 4	

REV.	DESCRIPTION	DATE	BY

Contact Information  
Port of Lewiston  
Dave Doeringsfeld  
208-743-5531  
Outside Plant Maintenance, llc  
Ron Glessner 208-661-5648

State: ID  
County: Nez Perce  
City: Lewiston  
Section:  
Township:  
Range:  
Legal:

