

FIBER CONSTRUCTION	
263'	Buried 12 STRAND F.O.CABLE
4501'	Buried 96 STRAND F.O.CABLE
6075'	1 1/4" HDPE CONDUIT
0	3" SCHEDULE 40 RISER
0	NEW ANCHOR
0	AERIAL MARKER
4	BURIED MARKER
0	PUPI ARM
0	EXTENSION ARM
8	NEW HAND HOLE

	CULVERT
	DIRECTIONAL BORE
	EXISTING CONDUIT
	BURIED CABLE
	NEW ANCHOR
	SIDEWALK ANCHOR
	EXISTING ANCHOR
	OVERHEAD GUY
	ATTACH TO POLE GROUND
	FIBER SLACK LOOP
	JOINT USE POLE
	CABLE CHANGE
	BURIED ROUTE MARKER
	EXISTING HAND HOLE
	NEW HAND HOLE

Drawing Name: Port of Lewiston		Drawn By: Ron Glessner 02-09-18			
FRONTAGE ROAD					
SIZE	FSCM NO	DWG NO		REV	
SCALE		SHEET 1			

REV.	DESCRIPTION	DATE	BY
REV.	Revised	07-30-18	RG
REV.	DESCRIPTION	DATE	BY
REV.	DESCRIPTION	DATE	BY
REV.	DESCRIPTION	DATE	BY
REV.	DESCRIPTION	DATE	BY

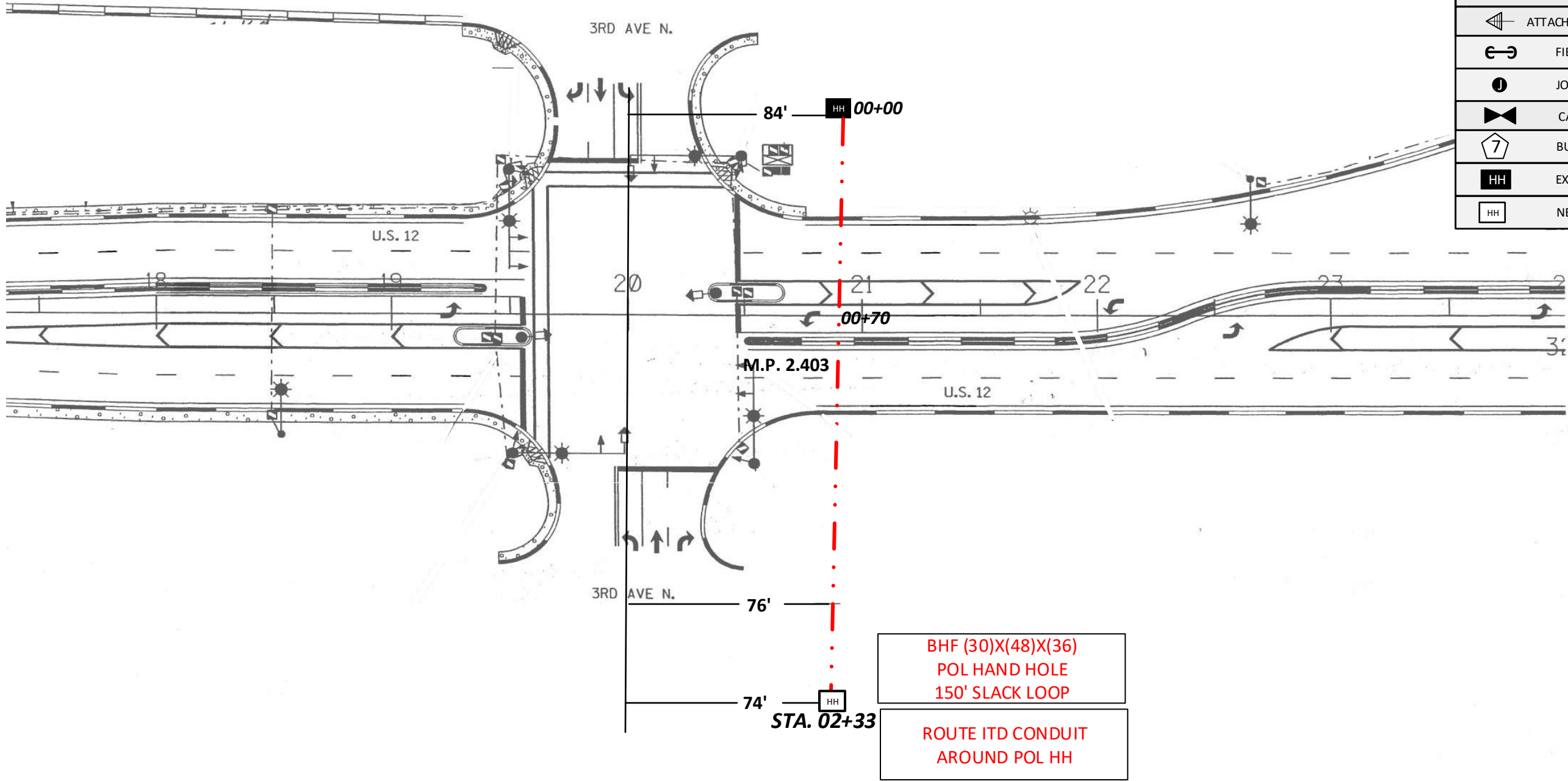
Contact Information		State: ID County: Nez Perce City: Lewiston	
Port of Lewiston Dave Doeringsfeld 208-743-5531 Outside Plant Maintenance, llc Ron Glessner 208-661-5648		Section: Township: Range: Legal:	



PROPOSED BURIED 96 STRAND LONGITUDINAL ARMORED SINGLE MODE FIBER OPTIC CABLE INSIDE (1) 1 1/4" HDPE SDR 13.5 CONDUIT AND (1) 1 1/4" HDPE SDR CONDUIT FOR ITD
 PLACE CONDUIT BELOW ALL CITY UTILITIES.

T. 36 N., R. 5 W., B.M.
 CITY OF LEWISTON

	CULVERT
	DIRECTIONAL BORE
	EXISTING CONDUIT
	BURIED CABLE
	NEW ANCHOR
	SIDEWALK ANCHOR
	EXISTING ANCHOR
	OVERHEAD GUY
	ATTACH TO POLE GROUND
	FIBER SLACK LOOP
	JOINT USE POLE
	CABLE CHANGE
	BURIED ROUTE MARKER
	EXISTING HAND HOLE
	NEW HAND HOLE



BHF (30)X(48)X(36)
 POL HAND HOLE
 150' SLACK LOOP
 ROUTE ITD CONDUIT
 AROUND POL HH

Drawing Name: Port of Lewiston		Drawn By: Ron Glessner 02-09-18			
FRONTAGE ROAD					
SIZE	FSCM NO	DWG NO		REV	
SCALE			SHEET 2		

REV.	REVISED	07-30-18	RG
REV.	DESCRIPTION	DATE	BY
REV.	DESCRIPTION	DATE	BY
REV.	DESCRIPTION	DATE	BY
REV.	DESCRIPTION	DATE	BY

Contact Information
 Port of Lewiston
 Dave Doeringsfeld
 208-743-5531
 Outside Plant Maintenance, llc
 Ron Glessner 208-661-5648

State: ID
 County: Nez Perce
 City: Lewiston
 Section:
 Township:
 Range:
 Legal:

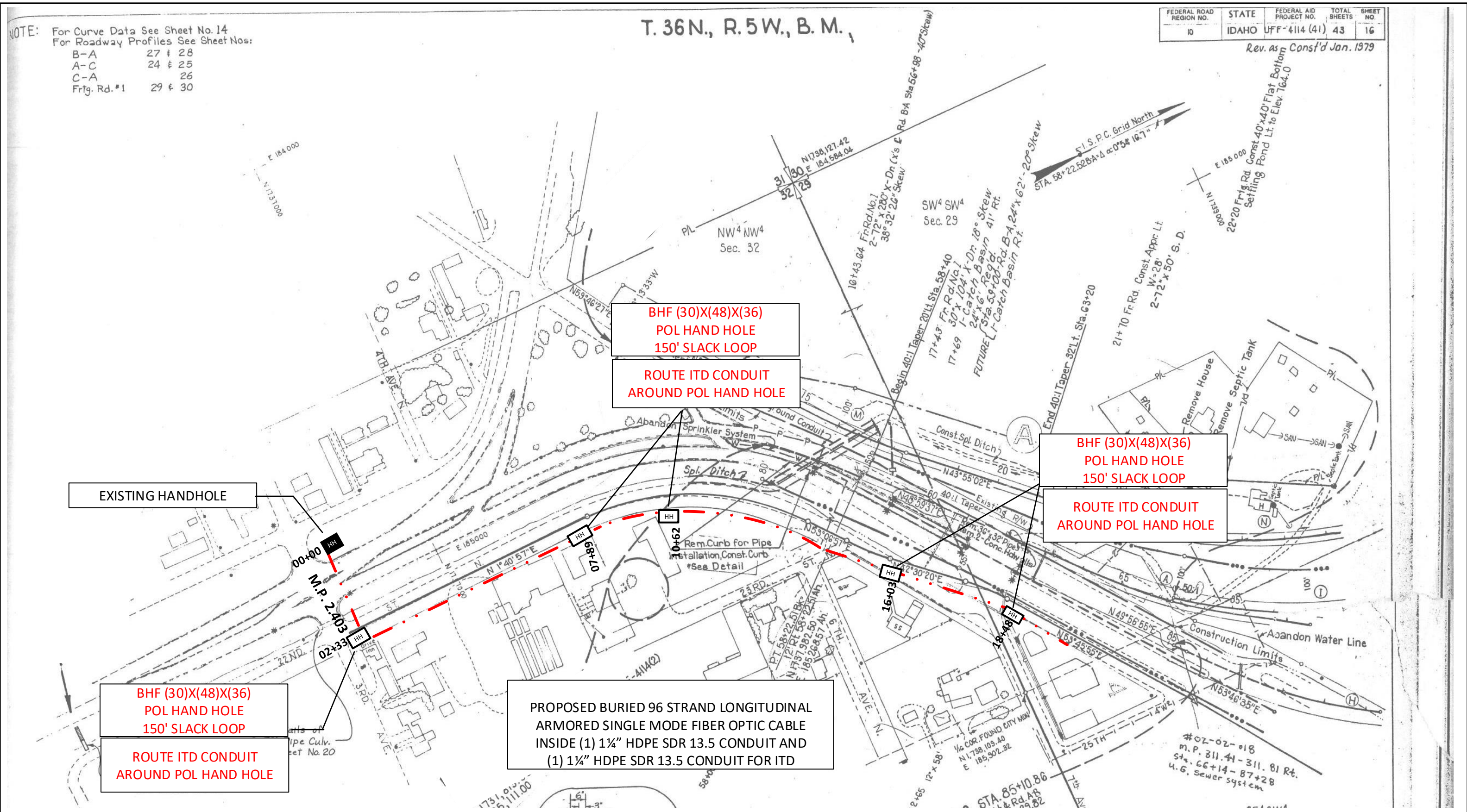


NOTE: For Curve Data See Sheet No. 14
 For Roadway Profiles See Sheet Nos:
 B-A 27 & 28
 A-C 24 & 25
 C-A 26
 Frtg. Rd. #1 29 & 30

T. 36N., R. 5W., B. M.,

FEDERAL ROAD REGION NO.	STATE	FEDERAL AID PROJECT NO.	TOTAL SHEETS	SHEET NO.
10	IDAHO	UFF-4114 (41)	43	16

Rev. as Cons'd Jan. 1979



EXISTING HANDHOLE

BHF (30)X(48)X(36)
 POL HAND HOLE
 150' SLACK LOOP

ROUTE ITD CONDUIT
 AROUND POL HAND HOLE

BHF (30)X(48)X(36)
 POL HAND HOLE
 150' SLACK LOOP

ROUTE ITD CONDUIT
 AROUND POL HAND HOLE

BHF (30)X(48)X(36)
 POL HAND HOLE
 150' SLACK LOOP

ROUTE ITD CONDUIT
 AROUND POL HAND HOLE

PROPOSED BURIED 96 STRAND LONGITUDINAL
 ARMORED SINGLE MODE FIBER OPTIC CABLE
 INSIDE (1) 1 1/4" HDPE SDR 13.5 CONDUIT AND
 (1) 1 1/4" HDPE SDR 13.5 CONDUIT FOR ITD

Drawing Name: Port of Lewiston		Drawn By: Ron Glessner 02-09-18			
FRONTAGE ROAD					
SIZE	FSCM NO	DWG NO	REV		
SCALE			SHEET 3		

REV.	DESCRIPTION	DATE	BY
REV.	REVISED	07-30-18	RG
REV.	DESCRIPTION	DATE	BY
REV.	DESCRIPTION	DATE	BY
REV.	DESCRIPTION	DATE	BY
REV.	DESCRIPTION	DATE	BY

Contact Information
 Port of Lewiston
 Dave Doeringsfeld
 208-743-5531
 Outside Plant Maintenance, llc
 Ron Glessner 208-661-5648

State: ID
 County: Nez Perce
 City: Lewiston
 Section:
 Township:
 Range:
 Legal:

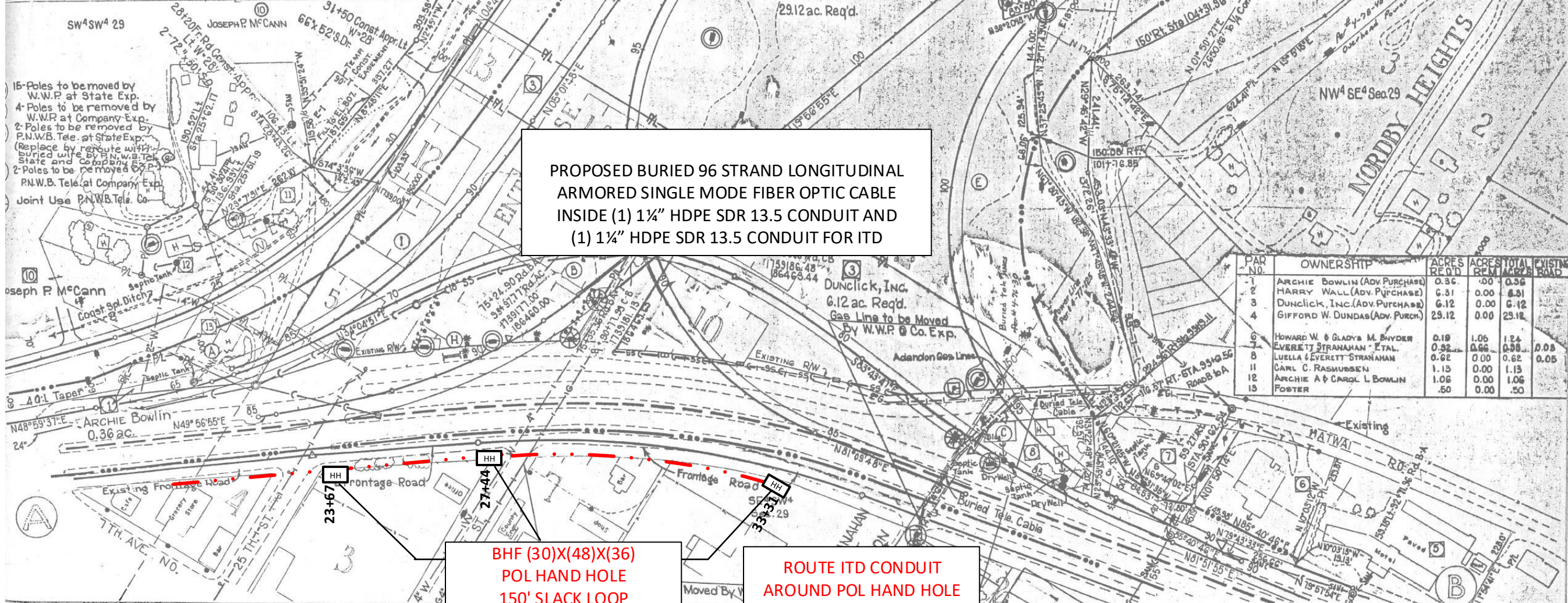


FEDERAL ROAD REGION NO.	STATE	FEDERAL AID PROJECT NO.	TOTAL SHEETS	SHEET NO.
10	IDAHO	U-PP-4114(4)	43	42

R/W & UTILITY PLANS
 Rev. as Const'd Jan 1979
 Rev. to Permits 1-7-87

STATION	CURVE DATA	RAMP
17394.33 P.S. 63+26.84	6° Lt 2°24'46" 275.22 48.20' 1145.92 250'	B-A
17395.84 P.S. 65+16.84	8° Rt 3°35'22" 595.27 457.37' 716.20' 320'	B-A
17397.15 P.S. 69+61.02	3° Lt 3°24'16" 341.45' 280.15' 1909.86 200'	B-A
17398.74 P.S. 81+43.16	0°45' Lt 1°53'54" 132.87' 265.71' 7639.44	B-A
17399.57 P.C. 91+78.58	9° Rt 11°6'27" 1020.93 1290.08 636.62	B-C
17401.32 P.C. 92+13.93	5°45' Rt 2°0'8" 395.41 773.84 1527.89	B-C
17403.76 P.S. 102+19.26	5° Rt 19°30'11" 454.22 390.06 1145.92 250'	A-C
17405.25 P.S. 104+69.26	5° Lt 17°30' 432.61 350.0' 1145.92 250'	A-C
17407.34 P.S. 85+51.09	5° Lt 17°30' 432.61 350.0' 1145.92 250'	A-C
17409.34 P.S. 88+01.09	5° Lt 29°03'04" 1368.55 581.02 1145.92 250'	C-A
17411.34 P.S. 83+60.81	5° Lt 29°03'04" 1368.55 581.02 1145.92 250'	C-A
17413.34 P.S. 83+60.81	5° Lt 29°03'04" 1368.55 581.02 1145.92 250'	C-A
17415.34 P.S. 94+43.43	7°30' Rt 30°29'17" 533.04 406.51 763.94 300'	C-A
17417.34 P.S. 97+43.43	9° Rt 15°37'26" 2655.54 1700.46 636.62	C-B
17419.34 P.S. 97+43.43	9° Rt 15°37'26" 2655.54 1700.46 636.62	C-B

STATION	DEGREE	DELTA	L	R	SP	S	a	S	Z	STATION		
17650.40 P.C. 10+22.67	50°	Radius	83°37'15"	44.72	72.57	50'				P.T. 10+95.64		
17651.17 P.C. 14+53.94	3°	Lt	3°28'33"	158.32	315.32	1909.86		0.04%	Z=65'	P.T. 17+69.86		
17652.90 P.C. 22+68.82	5	Lt	43°5'46"	406.87	781.33	1145.92		0.05%	Z=62.5'	P.T. 30+50.74		
17654.50 P.S. 35+00.94	6°	Rt	43°7'55"0"	590.34	632.18	954.33	240'	7°12'	2.5	0.06%	Z=65'	P.T. 46+13.11
17656.15 P.C. 37+40.94										RL=130'	P.T. 46+13.11	



PROPOSED BURIED 96 STRAND LONGITUDINAL ARMORED SINGLE MODE FIBER OPTIC CABLE INSIDE (1) 1 1/4" HDPE SDR 13.5 CONDUIT AND (1) 1 1/4" HDPE SDR 13.5 CONDUIT FOR ITD

PAR NO.	OWNERSHIP	ACRES RECD	ACRES REM	TOTAL ACRES	EXISTING ROAD
1	ARCHIE BOWLIN (ADV. PURCHASE)	0.36	.00	0.36	
2	HARRY WALL (ADV. PURCHASE)	6.31	0.00	6.31	
3	DUNCLICK, INC. (ADV. PURCHASE)	6.12	0.00	6.12	
4	GIFFORD W. DUNDAS (ADV. PURCH.)	29.12	0.00	29.12	
6	HOWARD W. & GLADYS M. SNYDER	0.19	1.05	1.24	
7	EVERETT STRANAHAN ETAL.	0.92	0.66	0.58	0.05
8	LUELLA EVERETT STRANAHAN	0.62	0.00	0.62	0.05
11	CARL C. RASMUSSEN	1.15	0.00	1.13	
12	ARCHIE A & CAROL L. BOWLIN	1.06	0.00	1.06	
13	FOSTER	.50	0.00	.50	

23+67 HH

**BHF (30)X(48)X(36)
 POL HAND HOLE
 150' SLACK LOOP**

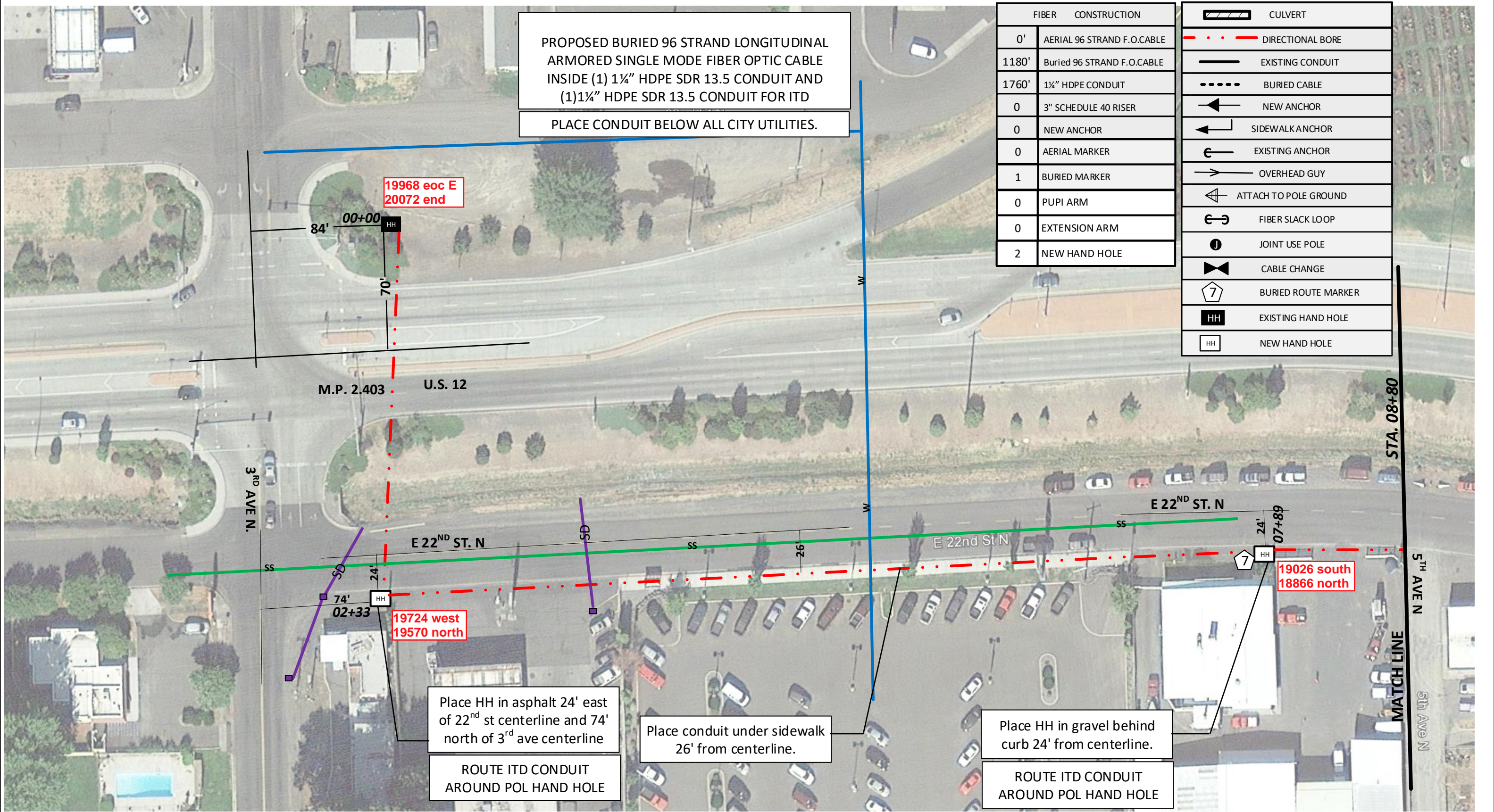
**ROUTE ITD CONDUIT
 AROUND POL HAND HOLE**

Drawing Name: Port of Lewiston		Drawn By: Ron Glessner 02-09-17	
FRONTAGE ROAD			
SIZE	FSCM NO	DWG NO	REV
SCALE			SHEET 4

REV.	REVISION	DATE	BY

Contact Information	State: ID County: Nez Perce City: Lewiston
Port of Lewiston Dave Doeringsfeld 208-743-5531 Outside Plant Maintenance, llc Ron Glessner 208-661-5648	Section: Township: Range: Legal:





PROPOSED BURIED 96 STRAND LONGITUDINAL ARMORED SINGLE MODE FIBER OPTIC CABLE INSIDE (1) 1 1/4" HDPE SDR 13.5 CONDUIT AND (1) 1 1/4" HDPE SDR 13.5 CONDUIT FOR ITD
 PLACE CONDUIT BELOW ALL CITY UTILITIES.

FIBER	CONSTRUCTION
0'	AERIAL 96 STRAND F.O.CABLE
1180'	Buried 96 STRAND F.O.CABLE
1760'	1 1/4" HDPE CONDUIT
0	3" SCHEDULE 40 RISER
0	NEW ANCHOR
0	AERIAL MARKER
1	BURIED MARKER
0	PUPI ARM
0	EXTENSION ARM
2	NEW HAND HOLE

	CULVERT
	DIRECTIONAL BORE
	EXISTING CONDUIT
	BURIED CABLE
	NEW ANCHOR
	SIDEWALK ANCHOR
	EXISTING ANCHOR
	OVERHEAD GUY
	ATTACH TO POLE GROUND
	FIBER SLACK LOOP
	JOINT USE POLE
	CABLE CHANGE
	BURIED ROUTE MARKER
	EXISTING HAND HOLE
	NEW HAND HOLE

19968 eoc E
20072 end

M.P. 2.403 U.S. 12

19724 west
19570 north

19026 south
18866 north

Place HH in asphalt 24' east of 22nd st centerline and 74' north of 3rd ave centerline
 ROUTE ITD CONDUIT AROUND POL HAND HOLE

Place conduit under sidewalk 26' from centerline.

Place HH in gravel behind curb 24' from centerline.
 ROUTE ITD CONDUIT AROUND POL HAND HOLE

Drawing Name: Port of Lewiston		Drawn By: Ron Glessner 02-09-18	
FRONTAGE ROAD			
SIZE	FSCM NO	DWG NO	REV
SCALE			SHEET 5

REV.	DESCRIPTION	DATE	BY
REV.	REVISED	07-30-18	RG
REV.	DESCRIPTION	DATE	BY
REV.	DESCRIPTION	DATE	BY
REV.	DESCRIPTION	DATE	BY
REV.	DESCRIPTION	DATE	BY

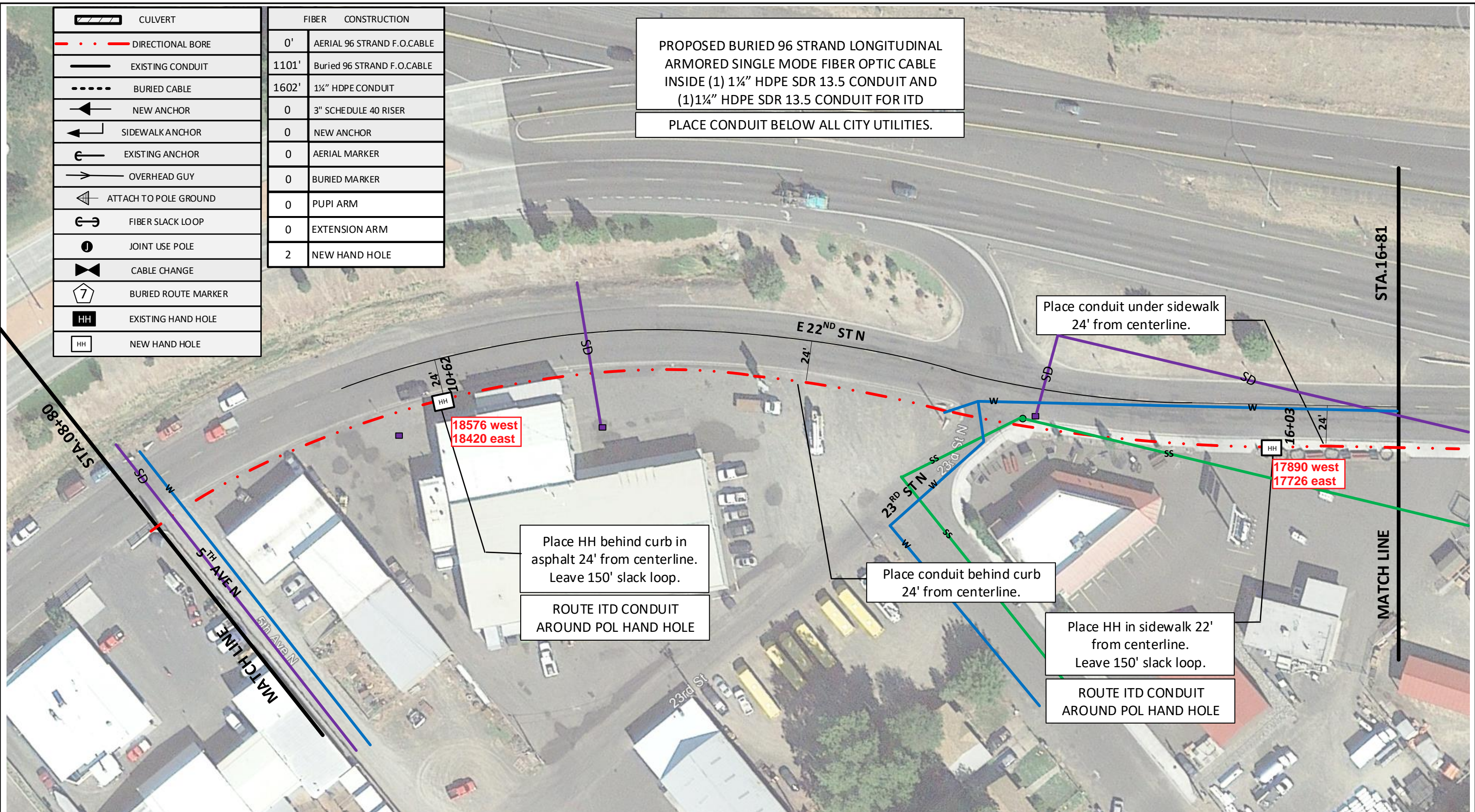
Contact Information		State: ID County: Nez Perce City: Lewiston	
Port of Lewiston Dave Doeringsfeld 208-743-5531 Outside Plant Maintenance, llc Ron Glessner 208-661-5648		Section: Township: Range: Legal:	



	CULVERT
	DIRECTIONAL BORE
	EXISTING CONDUIT
	BURIED CABLE
	NEW ANCHOR
	SIDEWALK ANCHOR
	EXISTING ANCHOR
	OVERHEAD GUY
	ATTACH TO POLE GROUND
	FIBER SLACK LOOP
	JOINT USE POLE
	CABLE CHANGE
	BURIED ROUTE MARKER
	EXISTING HAND HOLE
	NEW HAND HOLE

FIBER CONSTRUCTION	
0'	AERIAL 96 STRAND F.O.CABLE
1101'	Buried 96 STRAND F.O.CABLE
1602'	1 1/4" HDPE CONDUIT
0	3" SCHEDULE 40 RISER
0	NEW ANCHOR
0	AERIAL MARKER
0	BURIED MARKER
0	PUPI ARM
0	EXTENSION ARM
2	NEW HAND HOLE

PROPOSED BURIED 96 STRAND LONGITUDINAL ARMORED SINGLE MODE FIBER OPTIC CABLE INSIDE (1) 1 1/4" HDPE SDR 13.5 CONDUIT AND (1) 1 1/4" HDPE SDR 13.5 CONDUIT FOR ITD
PLACE CONDUIT BELOW ALL CITY UTILITIES.



Drawing Name: Port of Lewiston

Drawn By: Ron Glessner 02-09-18

FRONTAGE ROAD

SIZE	FSCM NO	DWG NO	REV
SCALE		SHEET 6	

REV.	DESCRIPTION	DATE	BY
REV.	REVISED	07-30-18	RG
REV.	DESCRIPTION	DATE	BY
REV.	DESCRIPTION	DATE	BY
REV.	DESCRIPTION	DATE	BY
REV.	DESCRIPTION	DATE	BY

Contact Information

Port of Lewiston
Dave Doeringsfeld
208-743-5531
Outside Plant Maintenance, LLC
Ron Glessner 208-661-5648

State: ID
County: Nez Perce
City: Lewiston

Section:
Township:
Range:
Legal:

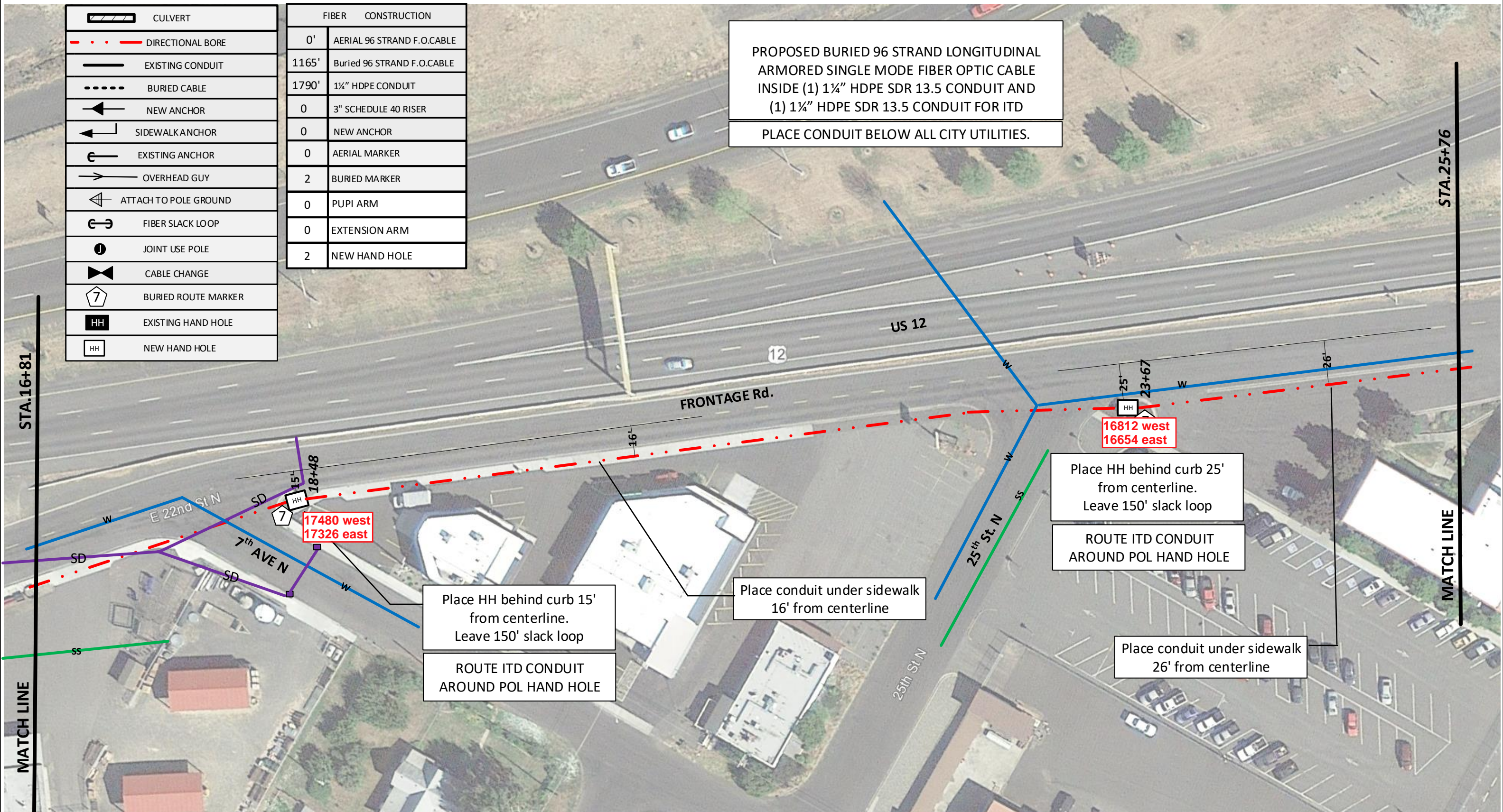


	CULVERT
	DIRECTIONAL BORE
	EXISTING CONDUIT
	BURIED CABLE
	NEW ANCHOR
	SIDEWALK ANCHOR
	EXISTING ANCHOR
	OVERHEAD GUY
	ATTACH TO POLE GROUND
	FIBER SLACK LOOP
	JOINT USE POLE
	CABLE CHANGE
	BURIED ROUTE MARKER
	EXISTING HAND HOLE
	NEW HAND HOLE

FIBER CONSTRUCTION	
0'	AERIAL 96 STRAND F.O.CABLE
1165'	Buried 96 STRAND F.O.CABLE
1790'	1 1/4" HDPE CONDUIT
0	3" SCHEDULE 40 RISER
0	NEW ANCHOR
0	AERIAL MARKER
2	BURIED MARKER
0	PUPI ARM
0	EXTENSION ARM
2	NEW HAND HOLE

PROPOSED BURIED 96 STRAND LONGITUDINAL ARMORED SINGLE MODE FIBER OPTIC CABLE INSIDE (1) 1 1/4" HDPE SDR 13.5 CONDUIT AND (1) 1 1/4" HDPE SDR 13.5 CONDUIT FOR ITD

PLACE CONDUIT BELOW ALL CITY UTILITIES.



Drawing Name: Port of Lewiston

Drawn By: Ron Glessner 02-09-18			
FRONTAGE ROAD			
SIZE	FSCM NO	DWG NO	REV
SCALE		SHEET 7	

REV.	DESCRIPTION	DATE	BY
	REVISED	07-30-18	RG

Contact Information

Port of Lewiston
 Dave Doeringsfeld
 208-743-5531
 Outside Plant Maintenance, llc
 Ron Glessner 208-661-5648

State: ID
 County: Nez Perce
 City: Lewiston

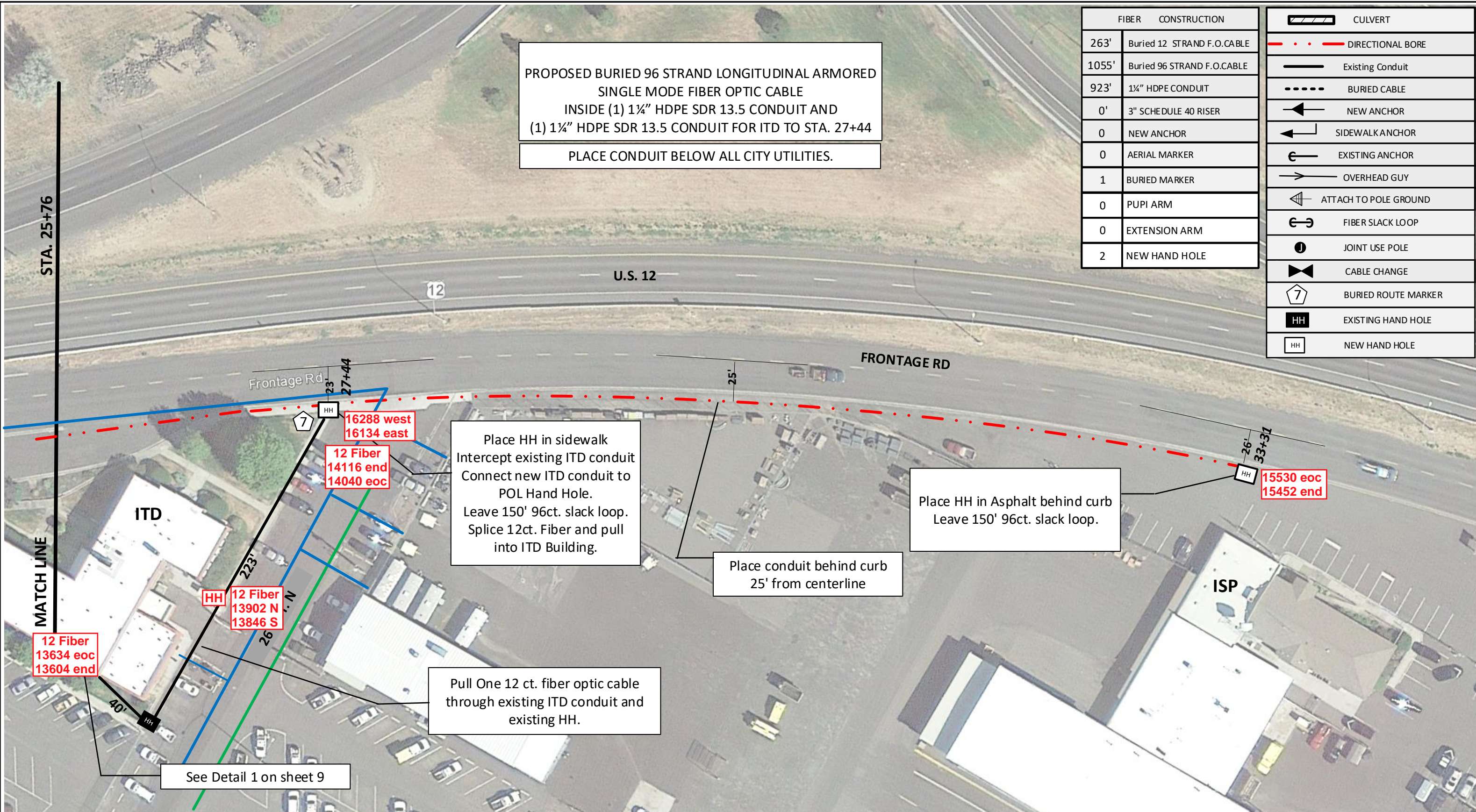
Section:
 Township:
 Range:
 Legal:



PROPOSED BURIED 96 STRAND LONGITUDINAL ARMORED
SINGLE MODE FIBER OPTIC CABLE
INSIDE (1) 1 1/4" HDPE SDR 13.5 CONDUIT AND
(1) 1 1/4" HDPE SDR 13.5 CONDUIT FOR ITD TO STA. 27+44
PLACE CONDUIT BELOW ALL CITY UTILITIES.

FIBER	CONSTRUCTION
263'	Buried 12 STRAND F.O.CABLE
1055'	Buried 96 STRAND F.O.CABLE
923'	1 1/4" HDPE CONDUIT
0'	3" SCHEDULE 40 RISER
0	NEW ANCHOR
0	AERIAL MARKER
1	BURIED MARKER
0	PUPI ARM
0	EXTENSION ARM
2	NEW HAND HOLE

	CULVERT
	DIRECTIONAL BORE
	Existing Conduit
	BURIED CABLE
	NEW ANCHOR
	SIDEWALK ANCHOR
	EXISTING ANCHOR
	OVERHEAD GUY
	ATTACH TO POLE GROUND
	FIBER SLACK LOOP
	JOINT USE POLE
	CABLE CHANGE
	BURIED ROUTE MARKER
	EXISTING HAND HOLE
	NEW HAND HOLE



Place HH in sidewalk
Intercept existing ITD conduit
Connect new ITD conduit to
POL Hand Hole.
Leave 150' 96ct. slack loop.
Splice 12ct. Fiber and pull
into ITD Building.

Place HH in Asphalt behind curb
Leave 150' 96ct. slack loop.

Place conduit behind curb
25' from centerline

Pull One 12 ct. fiber optic cable
through existing ITD conduit and
existing HH.

See Detail 1 on sheet 9

Drawing Name: Port of Lewiston	
SIZE	FSCM NO
SCALE	SHEET 8

Drawn By: Ron Glessner 02-09-18			
FRONTAGE ROAD			
DWG NO	REV		

REV.	DESCRIPTION	DATE	BY
REV.	REVISED	07-30-18	RG
REV.	DESCRIPTION	DATE	BY
REV.	DESCRIPTION	DATE	BY
REV.	DESCRIPTION	DATE	BY
REV.	DESCRIPTION	DATE	BY

Contact Information

Port of Lewiston
Dave Doeringsfeld
208-743-5531
Outside Plant Maintenance, llc
Ron Glessner 208-661-5648

State: ID
County: Nez Perce
City: Lewiston

Section:
Township:
Range:
Legal:





DETAIL ONE

PULL CABLE THROUGH EXTERIOR WALL IN EXISTING CONDUIT. ROUTE CABLE ABOVE SUSPENDED CEILING

ROUTE CABLE THROUGH SUSPENDED CEILING INTO SERVER ROOM. TERMINATE CABLE IN RACK MOUNTED PATCH PANEL.



Drawing Name: Port of Lewiston	Drawn By: Ron Glessner 02-09-18			
	FRONTAGE ROAD			
	SIZE	FSCM NO	DWG NO	REV
	SCALE		SHEET 9	

REV.	REVISED	07-30-18	RG
REV.	DESCRIPTION	DATE	BY
REV.	DESCRIPTION	DATE	BY
REV.	DESCRIPTION	DATE	BY
REV.	DESCRIPTION	DATE	BY

Contact Information

Port of Lewiston
 Dave Doeringsfeld
 208-743-5531
 Outside Plant Maintenance, llc
 Ron Glessner 208-661-5648

State: ID
 County: Nez Perce
 City: Lewiston

Section:
 Township:
 Range:
 Legal:



GENERAL CONSTRUCTION NOTES

CONTRACTOR IS RESPONSIBLE FOR ALL PERMITS EXCEPT STATE HWY., COUNTY ROAD,RAILROAD OR WATER CROSSINGS.

RESTORATION OF ALL RIGHT OF WAY GROUND WILL BE RESTORED TO ORIGINAL CONDITION OR BETTER.

CONTRACTOR WILL COORDINATE WITH OSP MANAGER 24 HRS. PRIOR TO BEGINNING CONSTRUCTION.

OSP MANAGER WILL CONTACT BUILDING OWNER/TENANT 24 HRS. PRIOR TO BEGINNING CONSTRUCTION TO COORDINATE ACCESS TO BUILDINGS.

CONTRACTOR IS RESPONSIBLE FOR CALLING LOCATES AND IS RESPONSIBLE FOR REPAIR AND RESTORATION OF DAMAGED UTILITIES.

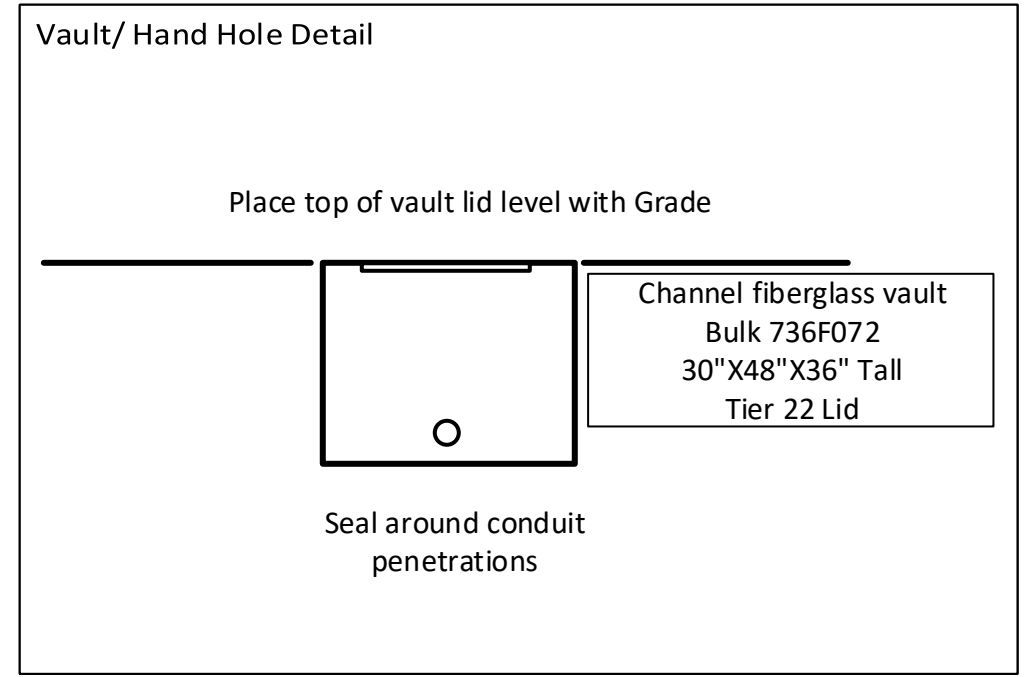
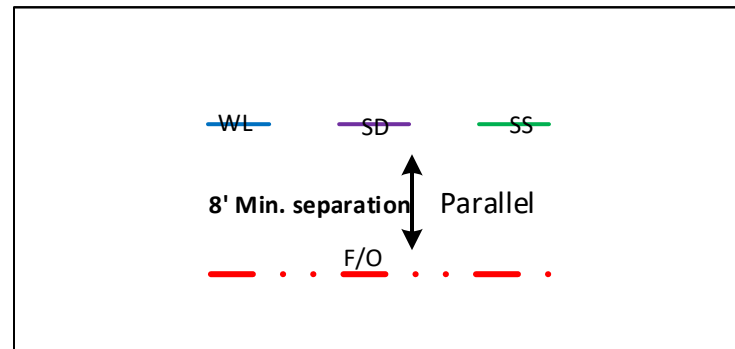
FOLLOW ALL NESC CONSTRUCTION GUIDELINES.

CONTRACTOR WILL HAVE ON SITE THE APPROVED DRAWINGS FROM THE UTILITY AND OR STATE,COUNTY,CITY,RAILROAD.

CONTRACTOR WILL PROVIDE CONDUIT , HAND HOLES , ANCHORS, AERIAL HARDWARE , LOCATE WIRE , 12CT F/O CABLE

PORT OF LEWISTON (POL) WILL PROVIDE , 96 CT FIBER OPTIC CABLE , AERIAL MARKERS , AND LINE ROUTE MARKERS.

	CULVERT
	DIRECTIONAL BORE
	EXISTING CONDUIT
	BURIED CABLE
	NEW ANCHOR
	SIDEWALK ANCHOR
	EXISTING ANCHOR
	OVERHEAD GUY
	ATTACH TO POLE GROUND
	FIBER SLACK LOOP
	JOINT USE POLE
	CABLE CHANGE
	BURIED ROUTE MARKER
	EXISTING HAND HOLE
	NEW HAND HOLE



Drawing Name:Port of Lewiston		Drawn By:Ron Glessner 02-09-18			
FRONTAGE ROAD					
SIZE	FSCM NO	DWG NO		REV	
SCALE	No scale	SHEET 10			

REV.	DESCRIPTION	DATE	BY

Contact Information

Port of Lewiston
Dave Doeringsfeld
208-743-5531
Outside Plant Maintenance, llc
Ron Glessner208-661-5648

State:ID.
County:Nez Perce
City: Lewiston

Section:
Township:
Range:
Legal:

