

Proposed Conduit

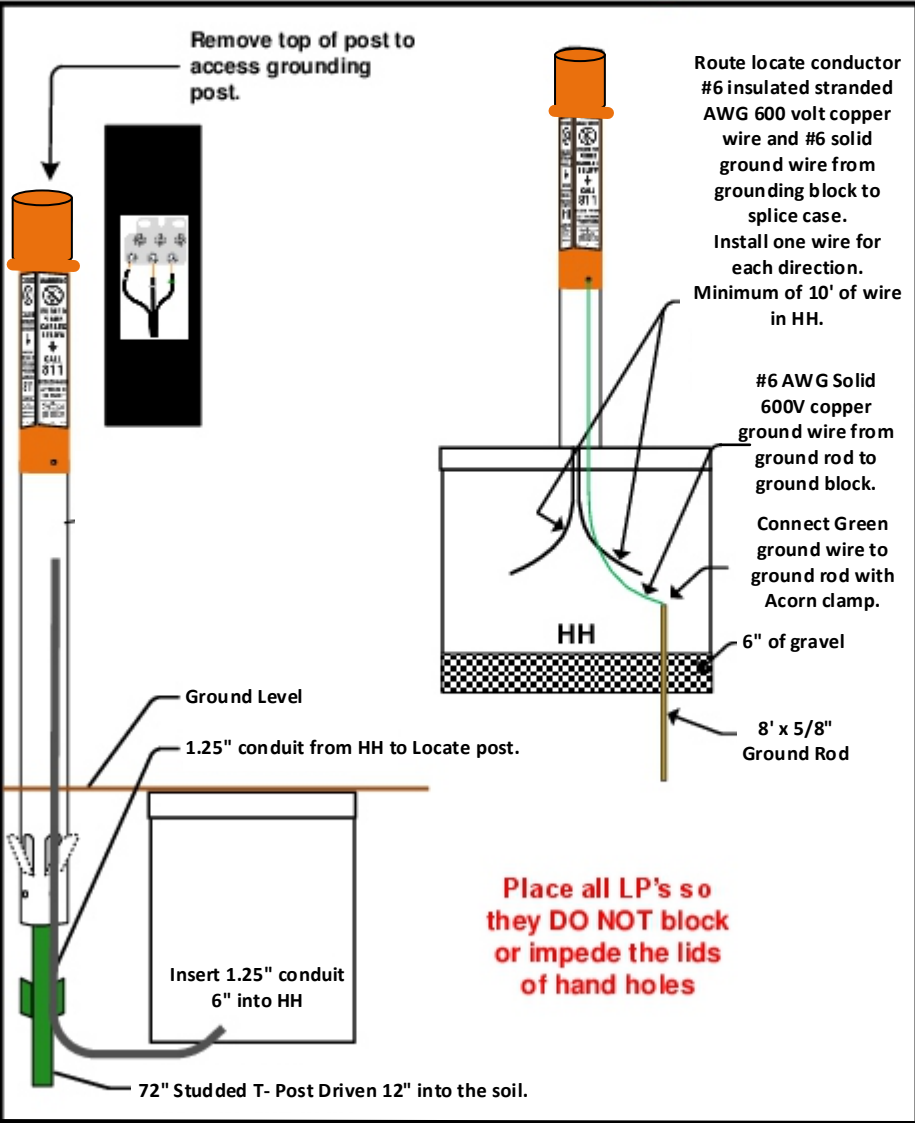
Existing Conduit

Existing Vault

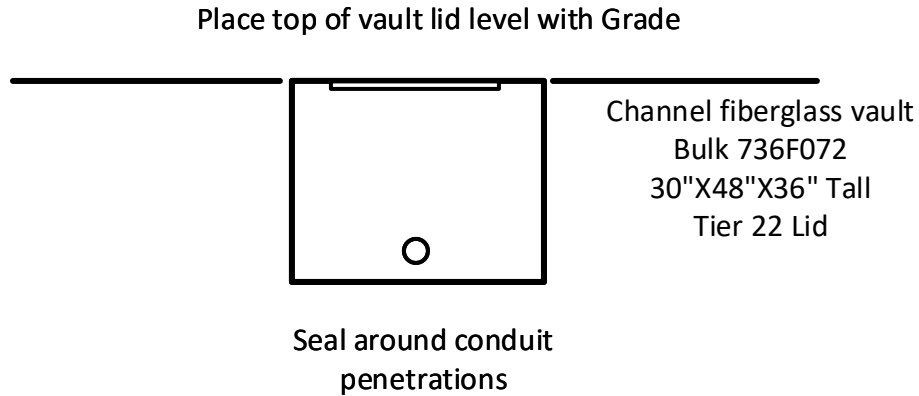
New Vault

PORT OF LEWISTON PROPOSED BURIED 1¼" CONDUIT WITH ONE 48 COUNT SINGLE MODE FIBER OPTIC CABLE. EXTEND FROM EXISTING POL CABLE ON O'CONNER ROAD. PLACE ALONG NORTH SIDE OF ACCESS ROAD ON SECURE SIDE OF AIRPORT FENCE. HEADING EAST APPROXIMATELY 2417'. PLACING THREE BURIED HAND HOLES ALONG LINE , TERMINATING AT EXISTING 2" CONDUIT PLACED FROM NEW AIRPORT OPERATIONS BUILDING.

Drawing Name:Port of Lewiston	Drawn By: Ron Glessner 10-24-17				REV.	Revised	03-27-18	RG	Contact Information	State: ID County:Nez Perce City:Lewiston
	LWS SOUTH ACCESS				REV.	Revised	04-23-18	RG		
	SIZE	FSCM NO	DWG NO	REV	REV.	DESCRIPTION	DATE	BY	Port of Lewiston Dave Doeringsfeld 208-743-5531 Outside Plant Maintenance,Ilc Ron Glessner208-661-5648	Section: Township: Range: Legal:
	SCALE			SHEET 1	REV.	DESCRIPTION	DATE	BY		



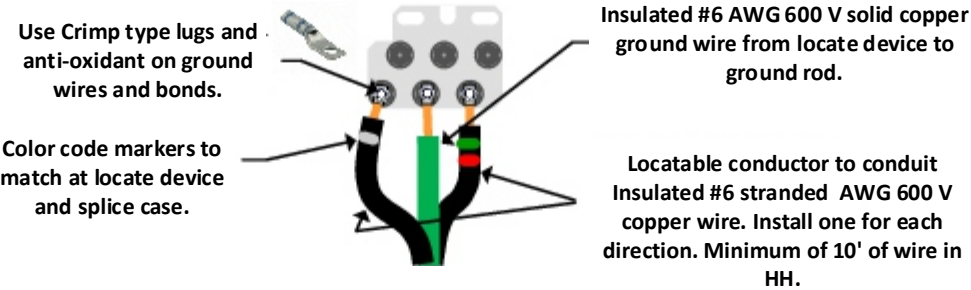
Vault/ Hand Hole Detail



RUS Standards
Directional Color Code
Use colored tape or zip ties

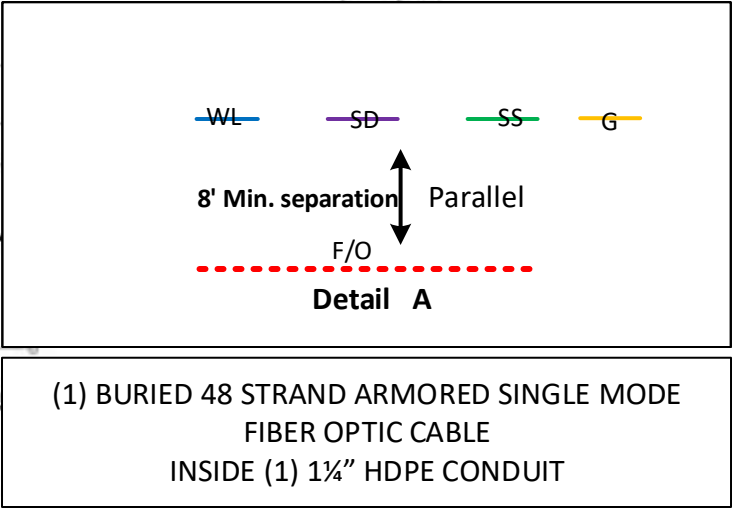
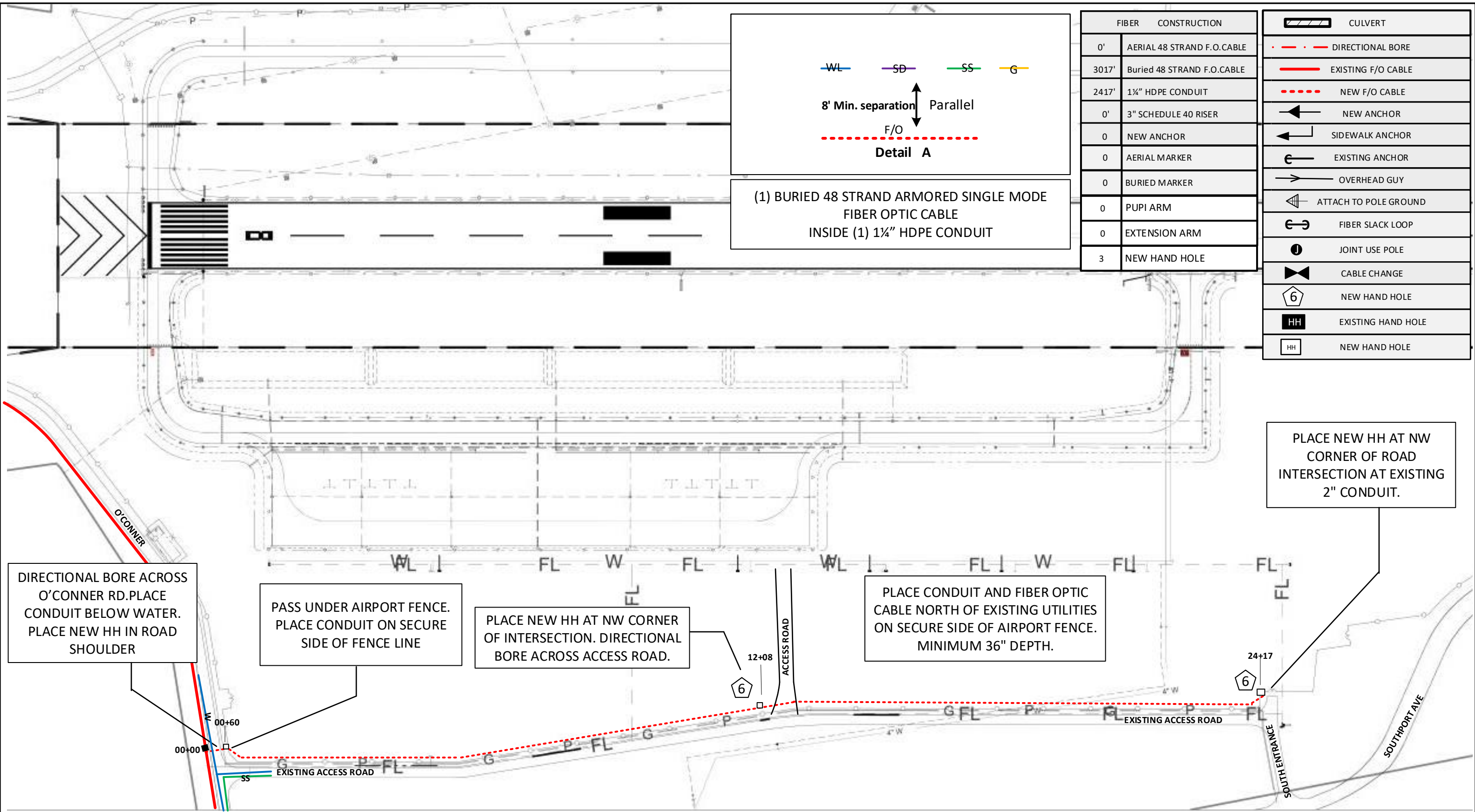
- ORANGE = NORTH
- GREEN = EAST
- BROWN = SOUTH
- SLATE = WEST

ALL BFO'S WILL HAVE DIRECTIONAL
COLOR CODE MARKER LOCATED 24"
FROM CONDUIT ENDS AND 24" FROM
END OF BFO.



PORT OF LEWISTON	Drawn By:Ron Glessner 10-24-17				REV.	Revised	03-27-18	RG	Contact Information	State: ID County: NEZ PERCE City: LEWISTON
	LWS SOUTH ACCESS				REV.	Revised	04-23-18	RG		
	SIZE	FSCM NO	DWG NO	REV	REV.	DESCRIPTION	DATE	BY	Outside Plant Maintenance,Ilc Ron Glessner208-661-5648	Section: Township: Range: Legal:
					REV.	DESCRIPTION	DATE	BY		
	SCALE				REV.	DESCRIPTION	DATE	BY		
				SHEET 2						





FIBER	CONSTRUCTION
0'	AERIAL 48 STRAND F.O.CABLE
3017'	Buried 48 STRAND F.O.CABLE
2417'	1 1/4" HDPE CONDUIT
0'	3" SCHEDULE 40 RISER
0	NEW ANCHOR
0	AERIAL MARKER
0	BURIED MARKER
0	PUPI ARM
0	EXTENSION ARM
3	NEW HAND HOLE

	CULVERT
	DIRECTIONAL BORE
	EXISTING F/O CABLE
	NEW F/O CABLE
	NEW ANCHOR
	SIDEWALK ANCHOR
	EXISTING ANCHOR
	OVERHEAD GUY
	ATTACH TO POLE GROUND
	FIBER SLACK LOOP
	JOINT USE POLE
	CABLE CHANGE
	NEW HAND HOLE
	EXISTING HAND HOLE
	NEW HAND HOLE

DIRECTIONAL BORE ACROSS O'CONNER RD.PLACE CONDUIT BELOW WATER. PLACE NEW HH IN ROAD SHOULDER

PASS UNDER AIRPORT FENCE. PLACE CONDUIT ON SECURE SIDE OF FENCE LINE

PLACE NEW HH AT NW CORNER OF INTERSECTION. DIRECTIONAL BORE ACROSS ACCESS ROAD.

PLACE CONDUIT AND FIBER OPTIC CABLE NORTH OF EXISTING UTILITIES ON SECURE SIDE OF AIRPORT FENCE. MINIMUM 36" DEPTH.

PLACE NEW HH AT NW CORNER OF ROAD INTERSECTION AT EXISTING 2" CONDUIT.

Drawing Name:Port of Lewiston

Drawn By: Ron Glessner 10-24-17

LWS SOUTH ACCESS

SIZE

FSCMNO

DWG NO

REV

SCALE

SHEET 3

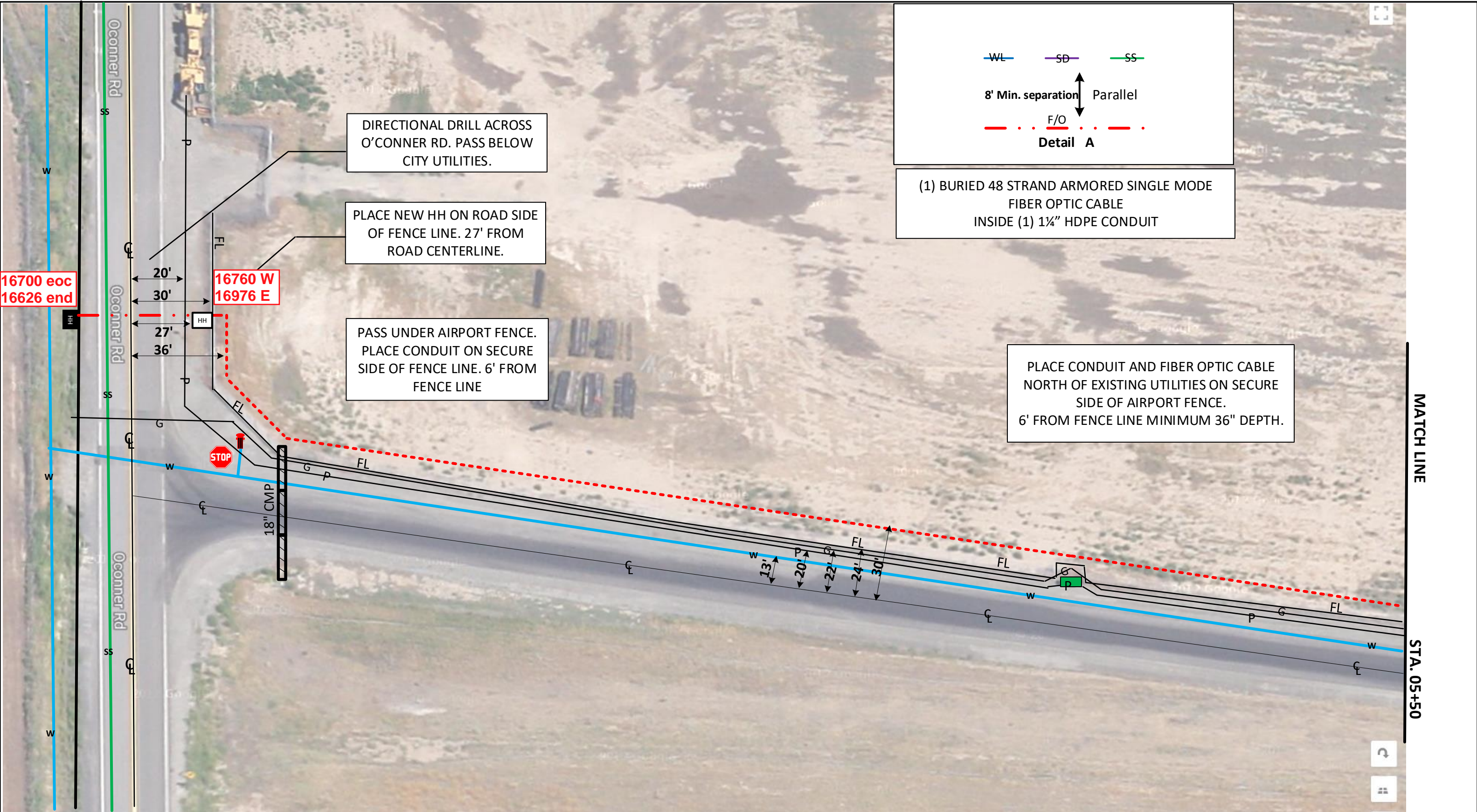
REV.	Revised	03-27-18	RG
REV.	Revised	04-23-18	RG
REV.	DESCRIPTION	DATE	BY
REV.	DESCRIPTION	DATE	BY
REV.	DESCRIPTION	DATE	BY

Contact Information



Port of Lewiston
Dave Doeringsfeld
208-743-5531
Outside Plant Maintenance, llc
Ron Glessner208-661-5648

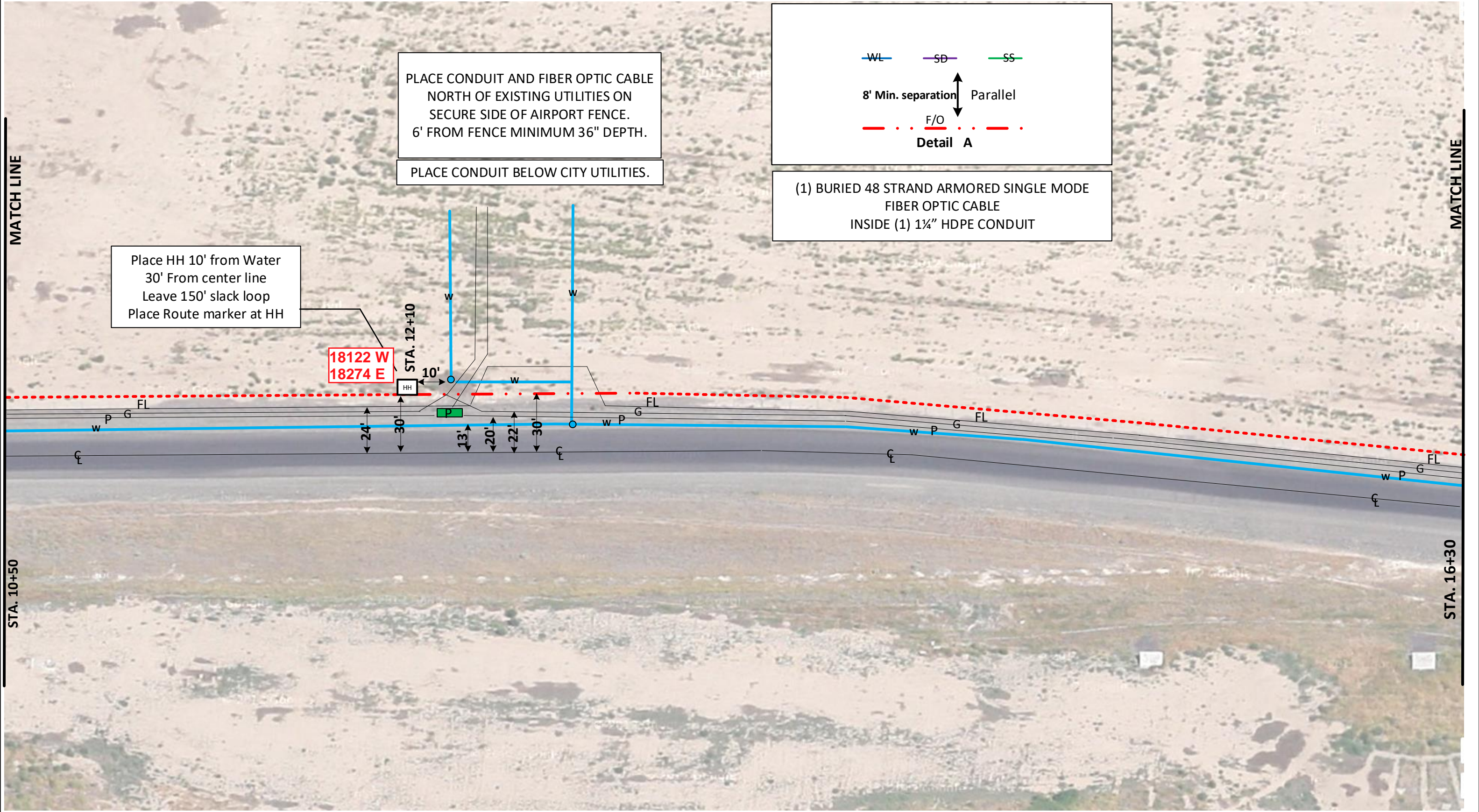
State: ID
County:Nez Perce
City:Lewiston

Section:
Township:
Range:
Legal:



Drawing Name:Port of Lewiston		Drawn By: Ron Glessner				REV.	Revised	04-23-18	RG	Contact Information		State: ID County:Nez Perce City:Lewiston	
		LWS SOUTH ACCESS				REV.	DESCRIPTION	DATE	BY			Section: Township: Range: Legal:	
	SIZE	FSCM NO	DWG NO	REV	REV.	DESCRIPTION	DATE	BY					
	SCALE				REV.	DESCRIPTION	DATE	BY					
					REV.	DESCRIPTION	DATE	BY					





Drawing Name:Port of Lewiston	Drawn By: Ron Glessner			
	LWS SOUTH ACCESS			
	SIZE	FSCM NO	DWG NO	REV
	SCALE		SHEET 6	

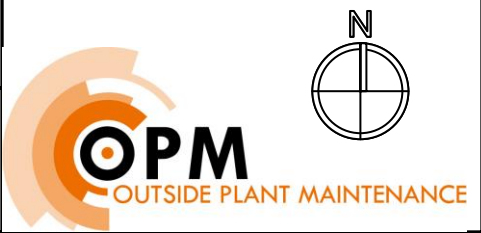
REV.	Revised	04-23-18	RG
REV.	DESCRIPTION	DATE	BY
REV.	DESCRIPTION	DATE	BY
REV.	DESCRIPTION	DATE	BY
REV.	DESCRIPTION	DATE	BY

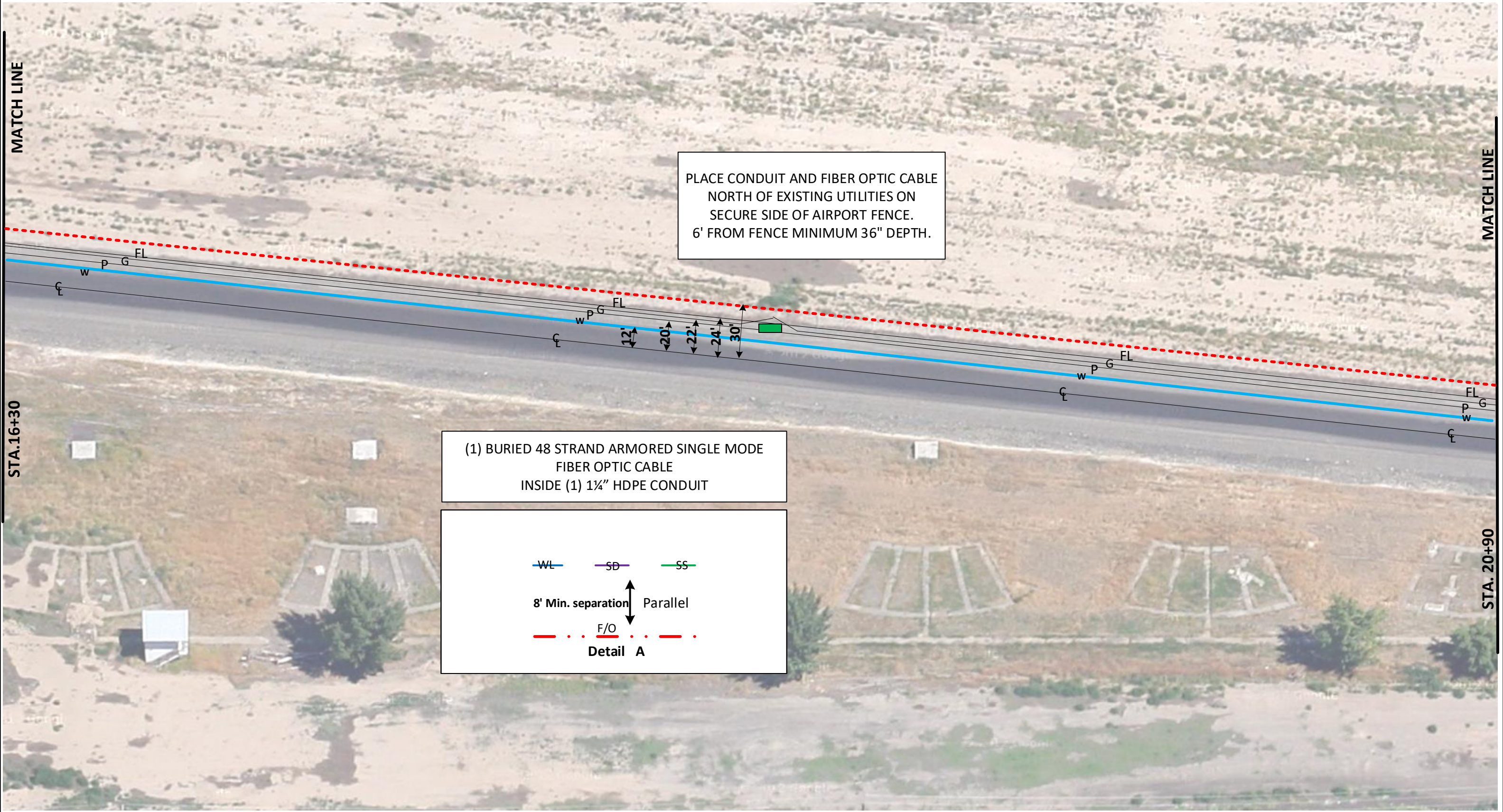
Contact Information

Port of Lewiston
Dave Doeringsfeld
208-743-5531
Outside Plant Maintenance, llc
Ron Glessner208-661-5648

State: ID
County:Nez Perce
City:Lewiston

Section:
Township:
Range:
Legal:





Drawing Name:Port of Lewiston	Drawn By: Ron Glessner			
	LWS SOUTH ACCESS			
	SIZE	FSCM NO	DWG NO	REV
	SCALE		SHEET 7	

REV.	Revised	04-23-18	RG
REV.	DESCRIPTION	DATE	BY
REV.	DESCRIPTION	DATE	BY
REV.	DESCRIPTION	DATE	BY
REV.	DESCRIPTION	DATE	BY

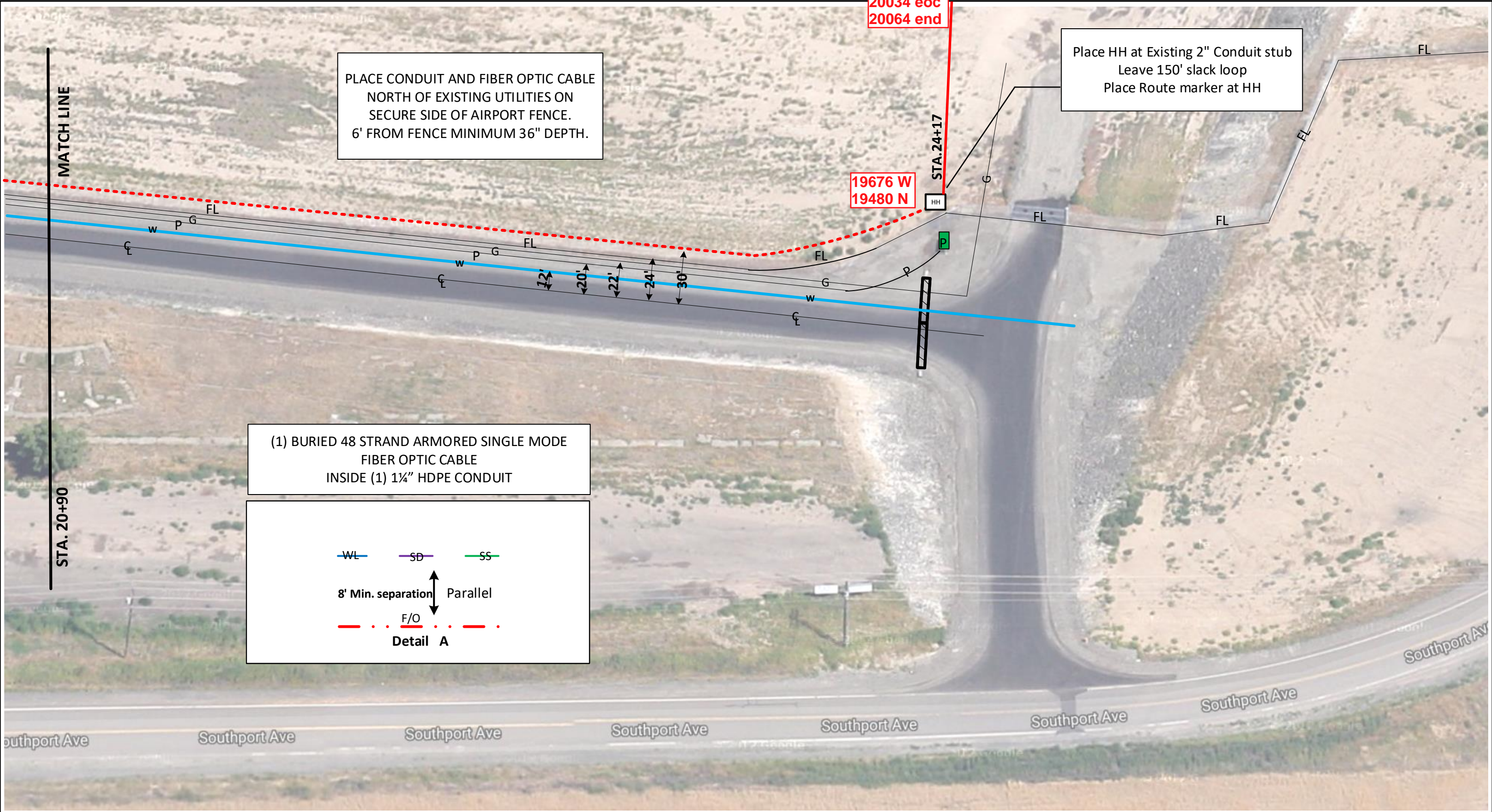
Contact Information

Port of Lewiston
Dave Doeringsfeld
208-743-5531
Outside Plant Maintenance, llc
Ron Glessner208-661-5648

State: ID
County:Nez Perce
City:Lewiston

Section:
Township:
Range:
Legal:





Drawing Name:Port of Lewiston		Drawn By: Ron Glessner				REV.	Revised	04-23-18	RG	Contact Information		State: ID County:Nez Perce City:Lewiston	
		LWS SOUTH ACCESS				REV.	DESCRIPTION	DATE	BY			Section: Township: Range: Legal:	
	SIZE	FSCM NO	DWG NO		REV	REV.	DESCRIPTION	DATE	BY				
	SCALE					REV.	DESCRIPTION	DATE	BY				
			SHEET 8			REV.	DESCRIPTION	DATE	BY				

