

PROJECT BEGINS AT 700 SNAKE RIVER AVE.  
 PROCEEDING NORTH ALONG THE EAST  
 SIDE OF SNAKE RIVER AVE 1490' TO 325  
 SNAKE RIVER AVE. THEN PROCEEDING  
 NORTH ALONG THE EAST SIDE OF SNAKE  
 RIVER AVE 435' TO 222 SNAKE RIVER AVE.

PROJECT VICINITY

227 Snake Rvr. ave

325 Snake Rvr. ave

700 Snake Rvr. ave

Drawing Name: Port of Lewiston

Drawn By: Ron Glessner 04-16-18

**SNAKE RIVER AVENUE**

SIZE	FSCMNO	DWG NO	REV
SCALE		SHEET 1	

REV.	DESCRIPTION	DATE	BY

Contact Information  
 Port of Lewiston  
 Dave Doeringsfeld  
 208-743-5531  
 Outside Plant Maintenance, llc  
 Ron Glessner 208-661-5648

State: ID  
 County: Nez Perce  
 City: Lewiston  
 Section:  
 Township:  
 Range:  
 Legal:



GENERAL CONSTRUCTION NOTES

CONTRACTOR IS RESPONSIBLE FOR ALL PERMITS EXCEPT STATE HWY., COUNTY ROAD,RAILROAD OR WATER CROSSINGS.

RESTORATION OF ALL RIGHT OF WAY GROUND WILL BE RESTORED TO ORIGINAL CONDITION OR BETTER.

CONTRACTOR WILL COORDINATE WITH OSP MANAGER 24 HRS. PRIOR TO BEGINNING CONSTRUCTION.

OSP MANAGER WILL CONTACT BUILDING OWNER/TENANT 24 HRS. PRIOR TO BEGINNING CONSTRUCTION TO COORDINATE ACCESS TO BUILDINGS.

CONTRACTOR IS RESPONSIBLE FOR CALLING LOCATES AND IS RESPONSIBLE FOR REPAIR AND RESTORATION OF DAMAGED UTILITIES.

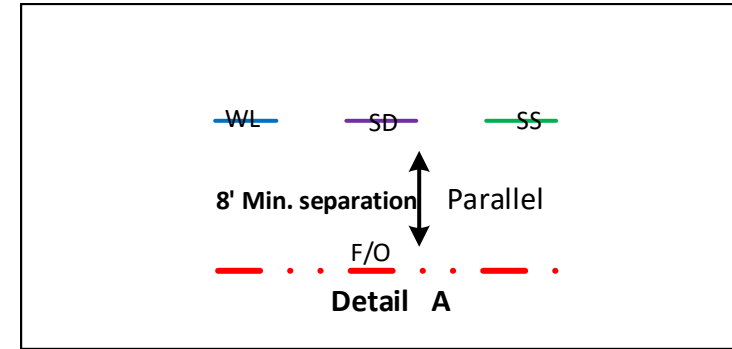
FOLLOW ALL NESC CONSTRUCTION GUIDELINES.

CONTRACTOR WILL HAVE ON SITE THE APPROVED DRAWINGS FROM THE UTILITY AND OR STATE,COUNTY,CITY,RAILROAD.

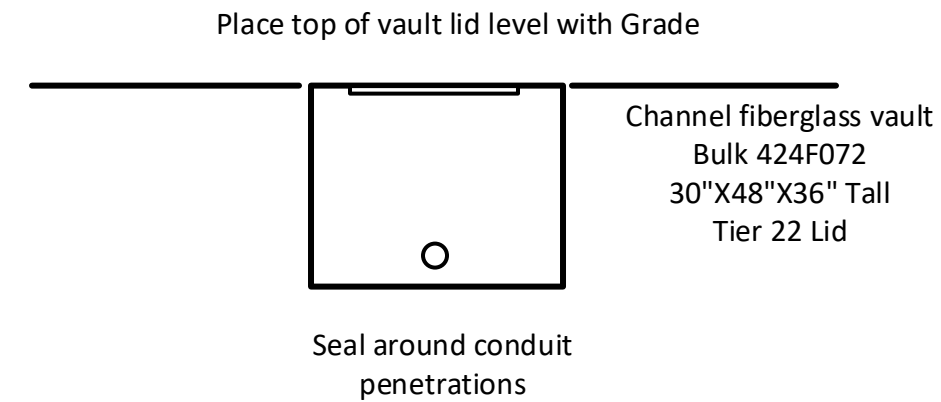
CONTRACTOR WILL PROVIDE CONDUIT , HAND HOLES , ANCHORS, AERIAL HARDWARE , LOCATE WIRE

PORT OF LEWISTON (POL) WILL PROVIDE , FIBER OPTIC CABLE , AERIAL MARKERS , AND LINE ROUTE MARKERS.

	CULVERT
	DIRECTIONAL BORE
	EXISTING CONDUIT
	BURIED CABLE
	NEW ANCHOR
	SIDEWALK ANCHOR
	EXISTING ANCHOR
	OVERHEAD GUY
	ATTACH TO POLE GROUND
	FIBER SLACK LOOP
	JOINT USE POLE
	CABLE CHANGE
	BURIED ROUTE MARKER
	EXISTING HAND HOLE
	NEW HAND HOLE

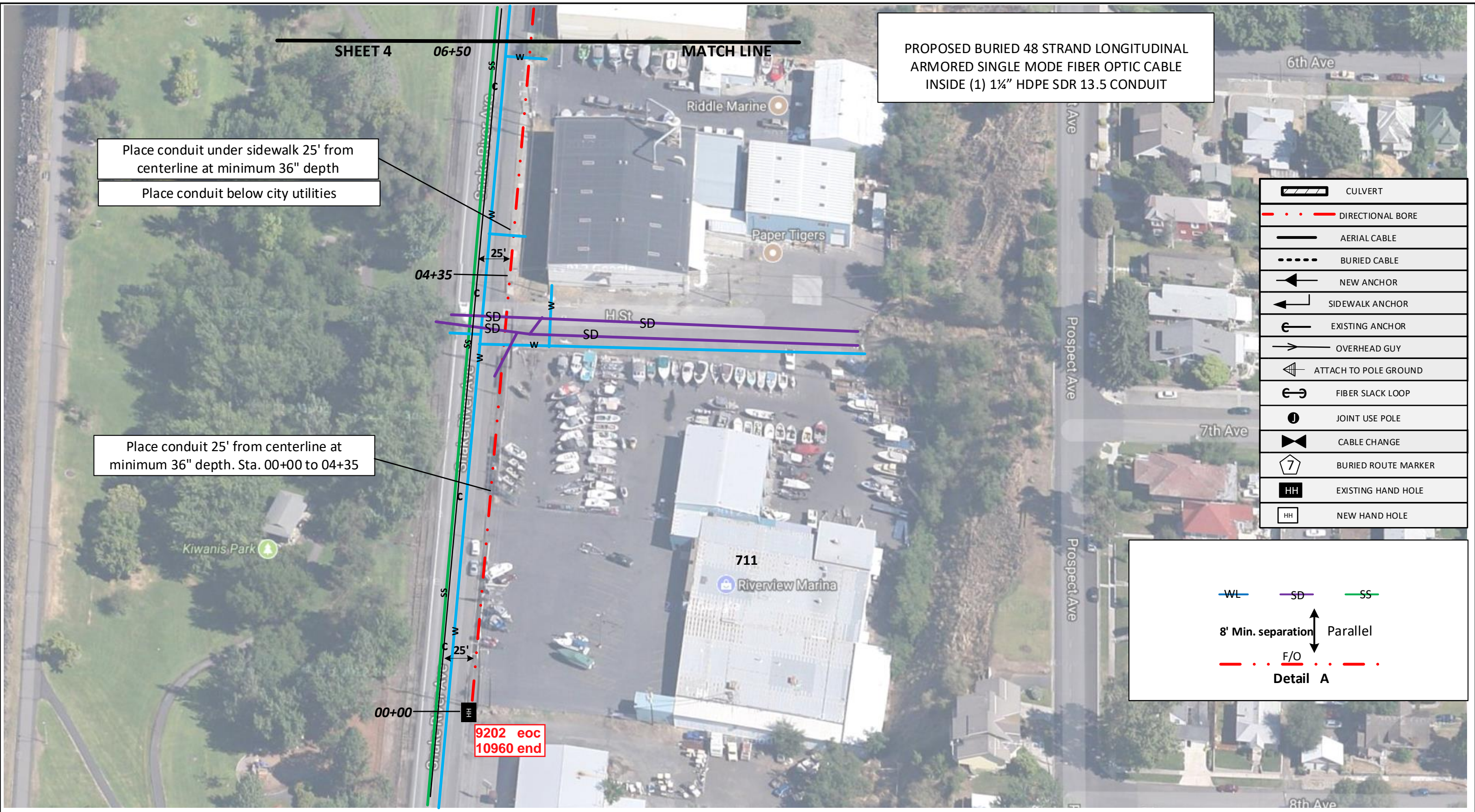


Vault/ Hand Hole Detail



Drawing Name:Port of Lewiston		Drawn By:Ron Glessner 04-16-18				Contact Information				State:ID. County:Nez Perce City:Lewiston				
SNAKE RIVER AVENUE						REV.	DESCRIPTION	DATE	BY	Port of Lewiston Dave Doeringsfeld 208-743-5531 Outside Plant Maintenance,llc Ron Glessner208-661-5648			Section: Township: Range: Legal:	
						REV.	DESCRIPTION	DATE	BY					
SIZE	FSCMNO	DWG NO		REV	REV.	DESCRIPTION	DATE	BY						
SCALE	No scale		SHEET 2		REV.	DESCRIPTION	DATE	BY						



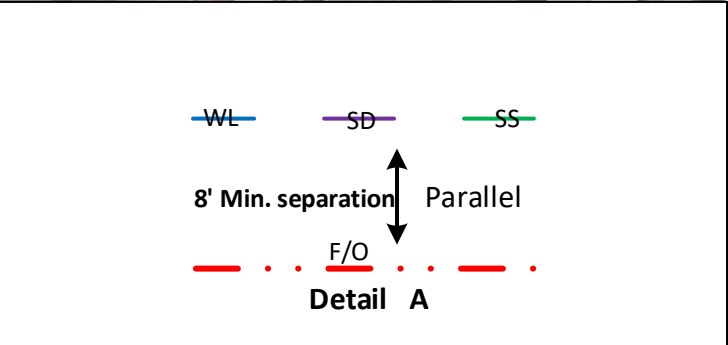


PROPOSED BURIED 48 STRAND LONGITUDINAL ARMORED SINGLE MODE FIBER OPTIC CABLE INSIDE (1) 1 1/4" HDPE SDR 13.5 CONDUIT

Place conduit under sidewalk 25' from centerline at minimum 36" depth  
Place conduit below city utilities

Place conduit 25' from centerline at minimum 36" depth. Sta. 00+00 to 04+35

	CULVERT
	DIRECTIONAL BORE
	AERIAL CABLE
	BURIED CABLE
	NEW ANCHOR
	SIDEWALK ANCHOR
	EXISTING ANCHOR
	OVERHEAD GUY
	ATTACH TO POLE GROUND
	FIBER SLACK LOOP
	JOINT USE POLE
	CABLE CHANGE
	BURIED ROUTE MARKER
	EXISTING HAND HOLE
	NEW HAND HOLE



Drawing Name: Port of Lewiston			
Drawn By: Ron Glessner 04-16-18			
<b>SNAKE RIVER AVE</b>			
SIZE	FSCMNO	DWG NO	REV
SCALE		SHEET 3	

REV.	DESCRIPTION	DATE	BY
REV.	DESCRIPTION	DATE	BY
REV.	DESCRIPTION	DATE	BY
REV.	DESCRIPTION	DATE	BY
REV.	DESCRIPTION	DATE	BY

Contact Information	
Port of Lewiston Dave Doeringsfeld 208-743-5531 Outside Plant Maintenance, llc Ron Glessner 208-661-5648	

State: ID
County: Nez Perce
City: Lewiston
Section:
Township:
Range:
Legal:

9202 eoc 10960 end	
-----------------------	--



Place HH in sidewalk 22' from centerline  
Leave 150' slack loop  
Restore concrete

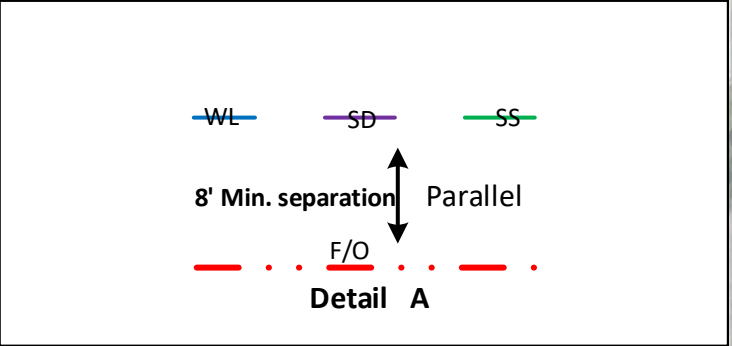
SEE SHEET 6 DETAIL

Place conduit under sidewalk 25' from centerline at minimum 36" depth

Place conduit below city utilities

Place HH in sidewalk 22' from centerline  
Leave 150' slack loop  
Restore concrete

PROPOSED BURIED 48 STRAND LONGITUDINAL ARMORED SINGLE MODE FIBER OPTIC CABLE INSIDE (1) 1 1/4" HDPE SDR 13.5 CONDUIT



<b>Drawing Name: Port of Lewiston</b>			
Drawn By: Ron Glessner 04-16-18			
<b>SNAKE RIVER AVENUE</b>			
SIZE	FSCMNO	DWG NO	REV
SCALE		SHEET 4	

REV.	DESCRIPTION	DATE	BY
REV.	DESCRIPTION	DATE	BY
REV.	DESCRIPTION	DATE	BY
REV.	DESCRIPTION	DATE	BY
REV.	DESCRIPTION	DATE	BY

Contact Information	
Port of Lewiston Dave Doeringsfeld 208-743-5531 Outside Plant Maintenance, llc Ron Glessner 208-661-5648	State: ID County: Nez Perce City: Lewiston
Section: Township: Range: Legal:	


PROPOSED BURIED 48 STRAND LONGITUDINAL ARMORED SINGLE MODE FIBER OPTIC CABLE INSIDE (1) 1 1/4" HDPE SDR 13.5 CONDUIT

FIBER	CONSTRUCTION
0'	AERIAL 48 STRAND F.O.CABLE
2215'	Buried 48 STRAND F.O.CABLE
1765'	1 1/4" HDPE CONDUIT
0	3" SCHEDULE 40 RISER
0	NEW ANCHOR
0	AERIAL MARKER
3	BURIED MARKER
0	PUPI ARM
0	EXTENSION ARM
3	NEW HAND HOLE

Place HH in sidewalk 22' from centerline  
Leave 150' slack loop  
Restore concrete

SEE SHEET 6 DETAIL

Place conduit under sidewalk 25' from centerline at minimum 36" depth

Place conduit below city utilities

8720 eoc S  
8422 eoc E



8392 wall  
8372 end

17+65

22'

25'

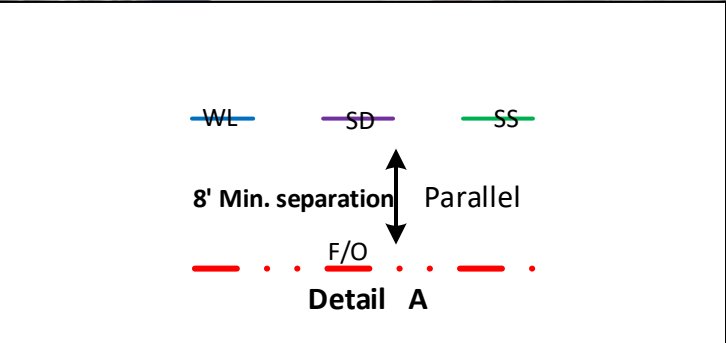
227

325

SHEET 4

13+75

MATCH LINE



Drawing Name: Port of Lewiston

Drawn By: Ron Glessner 04-16-18

**SNAKE RIVER AVENUE**

SIZE	FSCMNO	DWG NO	REV
SCALE		SHEET 5	

REV.	DESCRIPTION	DATE	BY

Contact Information  
  
Port of Lewiston  
Dave Doeringsfeld  
208-743-5531  
Outside Plant Maintenance, LLC  
Ron Glessner 208-661-5648

State: ID  
County: Nez Perce  
City: Lewiston  
  
Section:  
Township:  
Range:  
Legal:



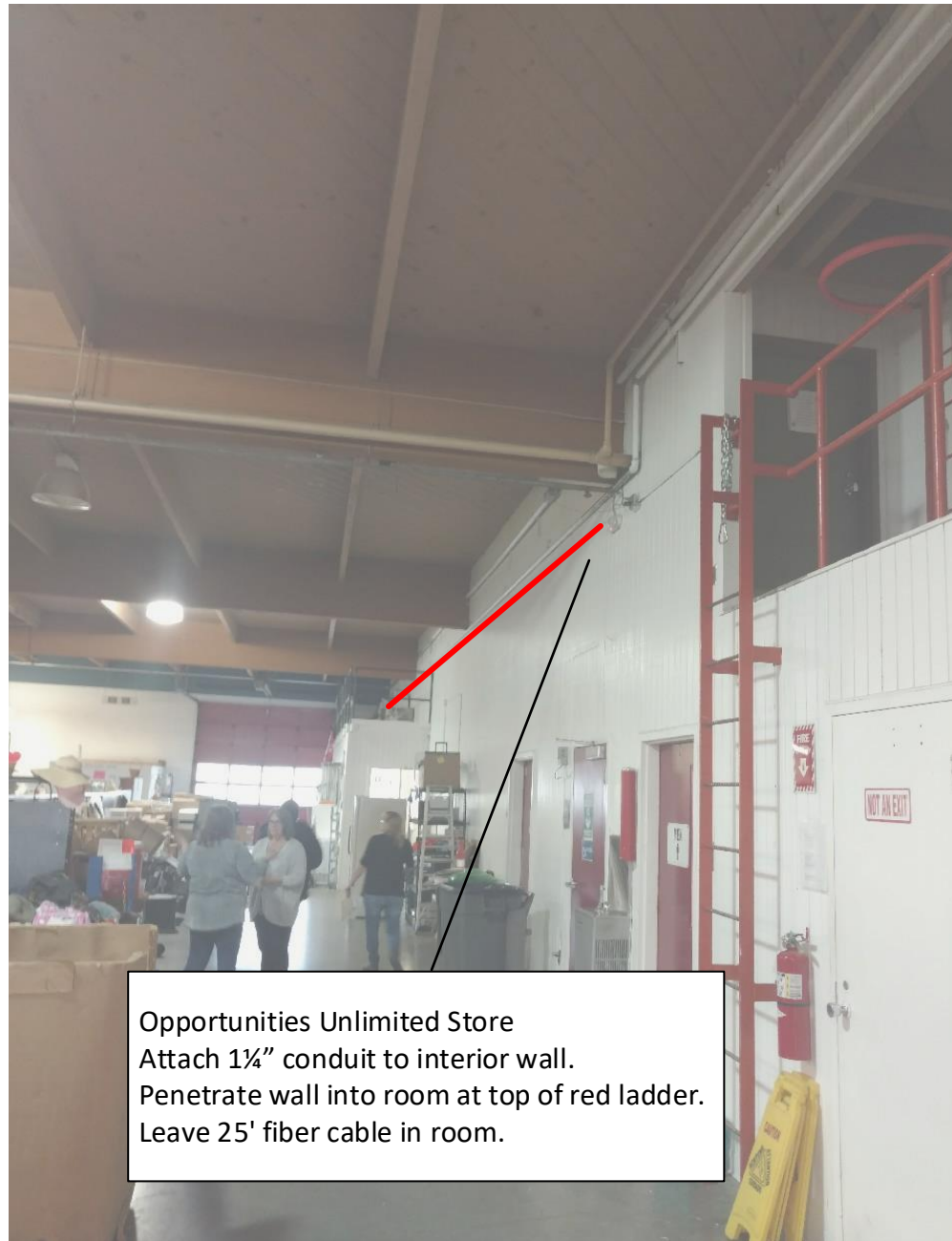
**Opportunities Unlimited  
325 Snake River Ave.**



HH

Opportunities Unlimited Store  
Place new HH in sidewalk  
Trench one 1¼" conduit to building.  
Attach 1¼" Sch. 40 conduit to building.  
Penetrate wall next to phone.  
Place pull box on exterior of building at penetration.

Opportunities Unlimited Contact:  
Hannah Liedke 208-743-1563



Opportunities Unlimited Store  
Attach 1¼" conduit to interior wall.  
Penetrate wall into room at top of red ladder.  
Leave 25' fiber cable in room.

Well Connected Electric Contact:  
Chelsea Blewett 208-746-8647



**Well Connected  
227 Snake River Ave**

HH

Well Connected Electric  
Place new HH in sidewalk  
Trench one 1¼" conduit to building.  
Attach 1¼" Sch. 40 conduit to building.  
Penetrate wall into loft.  
Place pull box on exterior of building at penetration.  
Leave 25' fiber cable in building.

<b>Drawing Name: Port of Lewiston</b>		Drawn By: Ron Glessner 04-16-18				REV.	DESCRIPTION	DATE	BY	Contact Information  Port of Lewiston Dave Doeringsfeld 208-743-5531 Outside Plant Maintenance, llc Ron Glessner 208-661-5648	State: ID
<b>SNAKE RIVER AVE</b>						REV.	DESCRIPTION	DATE	BY		County: Nez Perce
						REV.	DESCRIPTION	DATE	BY		City: Lewiston
SIZE	FSCMNO	DWG NO		REV	REV.	DESCRIPTION	DATE	BY	Section: Township: Range: Legal:		
SCALE			SHEET 6	REV.	DESCRIPTION	DATE	BY				

