

PROJECT IS LOCATED AT 1101 SNAKE RIVER AVE IN LEWISTON. AT THE INTERSECTION OF 11TH AND SNAKE RIVER AVE.

Drawing Name: Port of Lewiston		Fielded by Ron Glessner 02-07-18	
1101 SNAKE RIVER AVE			
SIZE	FSCMNO		REV
SCALE		SHEET 1	Cover

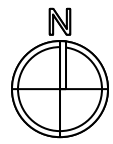
REV.	DESCRIPTION	DATE	BY

Contact Information

Port of Lewiston
 Dave Doeringsfeld
 208-743-5531
 Outside Plant Maintenance, llc
 Ron Glessner 208-661-5648

State: ID
 County: Nez Perce
 City: Lewiston

Section:
 Township:
 Range:
 Legal:



GENERAL CONSTRUCTION NOTES

CONTRACTOR IS RESPONSIBLE FOR ALL PERMITS EXCEPT STATE HWY., COUNTY ROAD,RAILROAD OR WATER CROSSINGS.

RESTORATION OF ALL RIGHT OF WAY GROUND WILL BE RESTORED TO ORIGINAL CONDITION OR BETTER.

CONTRACTOR WILL COORDINATE WITH OSP MANAGER 24 HRS. PRIOR TO BEGINNING CONSTRUCTION.

OSP MANAGER WILL CONTACT BUILDING OWNER/TENANT 24 HRS. PRIOR TO BEGINNING CONSTRUCTION TO COORDINATE ACCESS TO BUILDINGS.

CONTRACTOR IS RESPONSIBLE FOR CALLING LOCATES AND IS RESPONSIBLE FOR REPAIR AND RESTORATION OF DAMAGED UTILITIES.

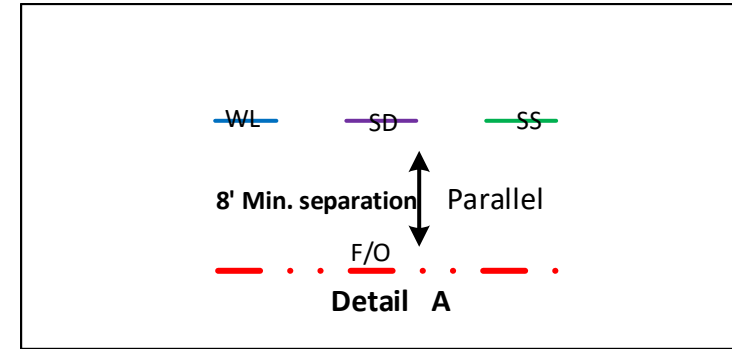
FOLLOW ALL NESC CONSTRUCTION GUIDELINES.

CONTRACTOR WILL HAVE ON SITE THE APPROVED DRAWINGS FROM THE UTILITY AND OR STATE,COUNTY,CITY,RAILROAD.

CONTRACTOR WILL PROVIDE CONDUIT , HAND HOLES , ANCHORS, AERIAL HARDWARE , LOCATE WIRE

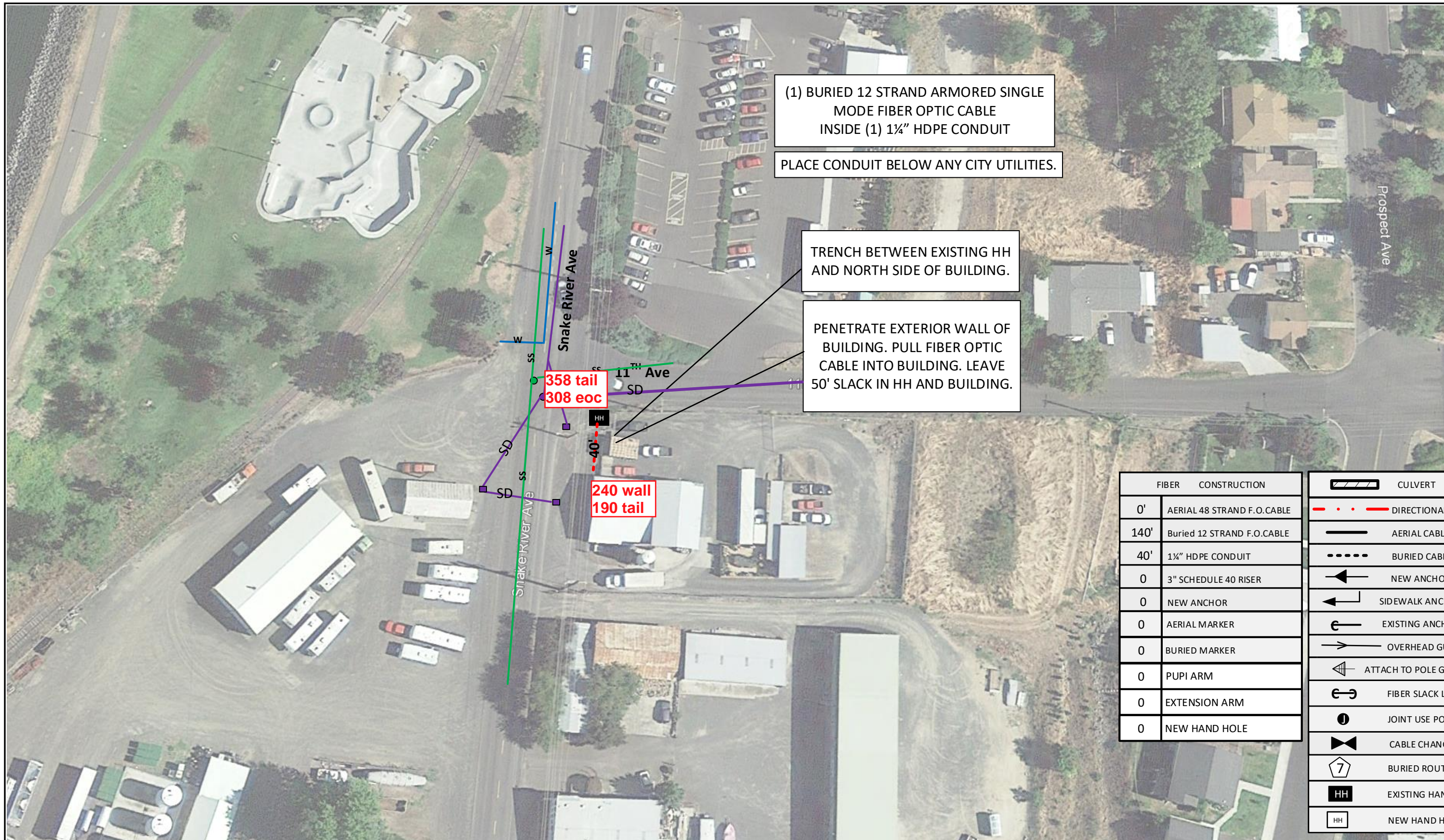
PORT OF LEWISTON (POL) WILL PROVIDE , FIBER OPTIC CABLE , AERIAL MARKERS , AND LINE ROUTE MARKERS.

	CULVERT
	DIRECTIONAL BORE
	EXISTING CONDUIT
	BURIED CABLE
	NEW ANCHOR
	SIDEWALK ANCHOR
	EXISTING ANCHOR
	OVERHEAD GUY
	ATTACH TO POLE GROUND
	FIBER SLACK LOOP
	JOINT USE POLE
	CABLE CHANGE
	BURIED ROUTE MARKER
	EXISTING HAND HOLE
	NEW HAND HOLE



Drawing Name:Port of Lewiston	Drawn By:Ron Glessner 02-07-18				REV.	DESCRIPTION	DATE	BY	Contact Information Port of Lewiston Dave Doeringsfeld 208-743-5531 Outside Plant Maintenance,llc Ron Glessner208-661-5648	State:ID. County:Nez Perce City: Lewiston Section: Township: Range: Legal:
	1101 SNAKE RIVER AVE									
SIZE	FSCMNO	DWG NO	REV	REV.	DESCRIPTION	DATE	BY			
SCALE	No scale	SHEET 2		REV.	DESCRIPTION	DATE	BY			





(1) BURIED 12 STRAND ARMORED SINGLE MODE FIBER OPTIC CABLE INSIDE (1) 1 1/4" HDPE CONDUIT

PLACE CONDUIT BELOW ANY CITY UTILITIES.

TRENCH BETWEEN EXISTING HH AND NORTH SIDE OF BUILDING.

PENETRATE EXTERIOR WALL OF BUILDING. PULL FIBER OPTIC CABLE INTO BUILDING. LEAVE 50' SLACK IN HH AND BUILDING.

358 tail
308 eoc

240 wall
190 tail

FIBER	CONSTRUCTION
0'	AERIAL 48 STRAND F.O.CABLE
140'	Buried 12 STRAND F.O.CABLE
40'	1 1/4" HDPE CONDUIT
0	3" SCHEDULE 40 RISER
0	NEW ANCHOR
0	AERIAL MARKER
0	BURIED MARKER
0	PUPI ARM
0	EXTENSION ARM
0	NEW HAND HOLE

	CULVERT
	DIRECTIONAL BORE
	AERIAL CABLE
	BURIED CABLE
	NEW ANCHOR
	SIDEWALK ANCHOR
	EXISTING ANCHOR
	OVERHEAD GUY
	ATTACH TO POLE GROUND
	FIBER SLACK LOOP
	JOINT USE POLE
	CABLE CHANGE
	BURIED ROUTE MARKER
	EXISTING HAND HOLE
	NEW HAND HOLE

Drawing Name: Port of Lewiston		Drawn By: Ron Glessner 02-07-18	
1101 SNAKE RIVER AVE			
SIZE	FSCM NO	DWG NO	REV
SCALE	SHEET 3		

REV.	DESCRIPTION	DATE	BY

Contact Information

 Port of Lewiston
 Dave Doeringsfeld
 208-743-5531
 Outside Plant Maintenance, llc
 Ron Glessner 208-661-5648

State: ID
 County: Nez Perce
 City: Lewiston

 Section:
 Township:
 Range:
 Legal:



BURY ONE 1¼" CONDUIT BETWEEN EXISTING HH AND BUILDING. ATTACH 1½" SCH.40 CONDUIT TO BUILDING. PENETRATE BUILDING AT TOP OF WALL. PULL ONE 12CT. FIBER OPTIC CABLE FROM HH INTO BUILDING.



Drawing Name: Port of Lewiston	Drawn By: Ron Glessner 02-07-18				REV.	DESCRIPTION	DATE	BY	Contact Information	State: ID County: Nez Perce City: Lewiston
	1101 SNAKE RIVER AVE				REV.	DESCRIPTION	DATE	BY		
	SIZE	FSCM NO	DWG NO	REV	REV.	DESCRIPTION	DATE	BY	Port of Lewiston Dave Doeringsfeld 208-743-5531 Outside Plant Maintenance, llc Ron Glessner 208-661-5648	Section: Township: Range: Legal:
					REV.	DESCRIPTION	DATE	BY		
	SCALE		SHEET 4		REV.	DESCRIPTION	DATE	BY		

