

CONTACTS:

HEALTH AND WELFARE :  
JEAN MOECKLI – 208-816-9920  
208-799-4407

PROJECT LOCATION 1118 F STREET

Drawing Name:Port of Lewiston	Drawn By: Ron Glessner 06-19-18				REV.	Revised	10-13-17	RG	Contact Information  Port of Lewiston Dave Doeringsfeld 208-743-5531 Outside Plant Maintenance, LLC Ron Glessner208-661-5648	State: ID County:Nez Perce City:Lewiston  Section: Township: Range: Legal:
	1118 F STREET				REV.	DESCRIPTION	DATE	BY		
	SIZE	FSCMNO	DWG NO	REV	REV.	DESCRIPTION	DATE	BY		
	SCALE			SHEET 1	REV.	DESCRIPTION	DATE	BY		
					REV.	DESCRIPTION	DATE	BY		



GENERAL CONSTRUCTION NOTES

CONTRACTOR IS RESPONSIBLE FOR ALL PERMITS EXCEPT STATE HWY., COUNTY ROAD,RAILROAD OR WATER CROSSINGS.

RESTORATION OF ALL RIGHT OF WAY GROUND WILL BE RESTORED TO ORIGINAL CONDITION OR BETTER.

CONTRACTOR WILL COORDINATE WITH OSP MANAGER 24 HRS. PRIOR TO BEGINNING CONSTRUCTION.  
CALL OSP MANAGER WHEN CONSTRUCTION IS COMPLETED. RON 208-661-5648

OSP MANAGER WILL CONTACT BUILDING OWNER/TENANT 24 HRS. PRIOR TO BEGINNING CONSTRUCTION TO COORDINATE ACCESS TO BUILDINGS.

CONTRACTOR IS RESPONSIBLE FOR CALLING LOCATES AND IS RESPONSIBLE FOR REPAIR AND RESTORATION OF DAMAGED UTILITIES.

FOLLOW ALL NESC CONSTRUCTION GUIDELINES.







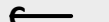






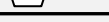

CONTRACTOR WILL HAVE ON SITE THE APPROVED DRAWINGS FROM THE UTILITY AND OR STATE,COUNTY,CITY,RAILROAD.

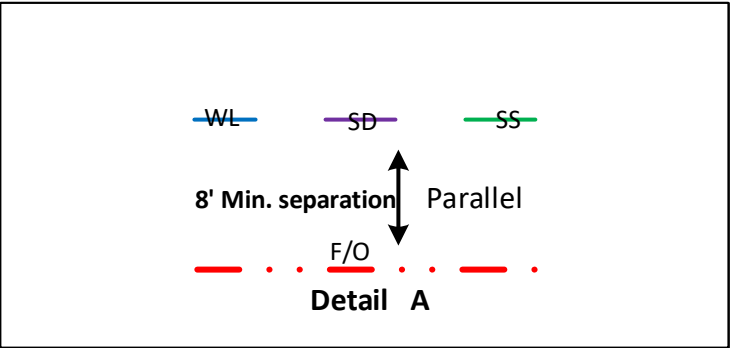
CONTRACTOR WILL PROVIDE CONDUIT , HAND HOLES , ANCHORS, AERIAL HARDWARE , LOCATE WIRE

PORT OF LEWISTON (POL) WILL PROVIDE , FIBER OPTIC CABLE , AERIAL MARKERS , AND LINE ROUTE MARKERS.

ABBREVIATIONS:

TIP	TOP INSIDE POSITION
TOP	TOP OUTSIDE POSITION
BIP	BOTTOM INSIDE POSITION
BOP	BOTTOM OUTSIDE POSTION
EA	EXTENSION ARM
PEA	PLACE EXTENSION ARM
RS	ROAD SIDE
FS	FIELD SIDE
DE	DEAD END
HOA	HEIGHT OF ATTACHMENT

	CULVERT
	DIRECTIONAL BORE
	AERIAL CABLE
	BURIED CABLE
	NEW ANCHOR
	SIDEWALK ANCHOR
	EXISTING ANCHOR
	OVERHEAD GUY
	ATTACH TO POLE GROUND
	FIBER SLACK LOOP
	JOINT USE POLE
	CABLE CHANGE
	BURIED ROUTE MARKER
	EXISTING HAND HOLE
	NEW HAND HOLE

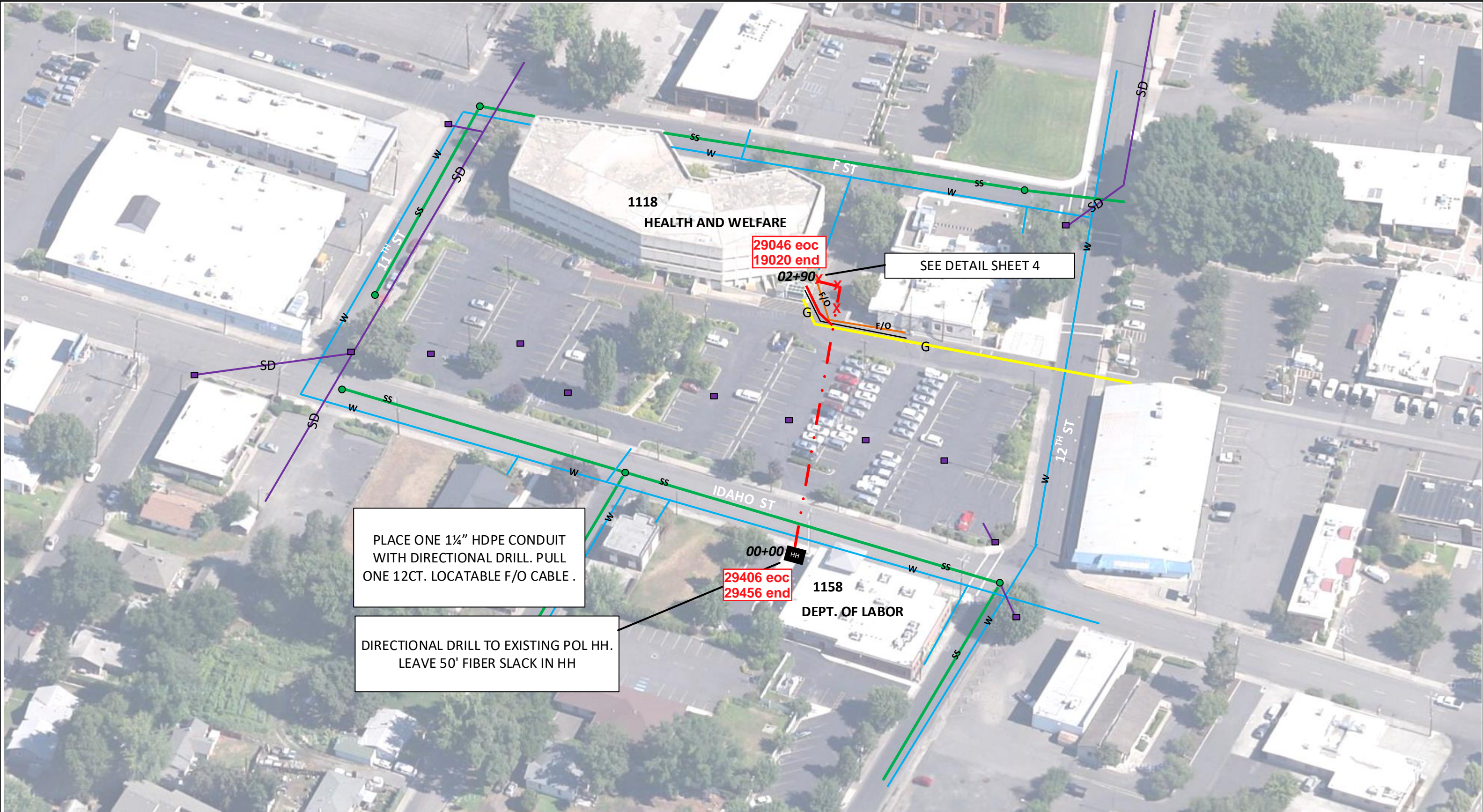


FIBER	CONSTRUCTION
0'	AERIAL 48 STRAND F.O.CABLE
365'	Buried 12 STRAND F.O.CABLE
290'	1½" HDPE CONDUIT
0'	3" SCHEDULE 40 RISER
0	NEW ANCHOR
0	AERIAL MARKER
0	BURIED MARKER
0	PUPI ARM
0	EXTENSION ARM
0	NEW HAND HOLE



Drawing Name:Port of Lewiston	Drawn By:Ron Glessner 06-19-18								Contact Information  Port of Lewiston Dave Doeringsfeld 208-743-5531 Outside Plant Maintenance,Ilc Ron Glessner208-661-5648	State:ID. County:Nez Perce City: Lewiston		
	1118 F STREET				REV.	DESCRIPTION	DATE	BY		Section: Township: Range: Legal:		
	SIZE	FSCM NO	DWG NO		REV	REV.	DESCRIPTION	DATE			BY	
	SCALE		No scale			SHEET 2	REV.	DESCRIPTION			DATE	BY



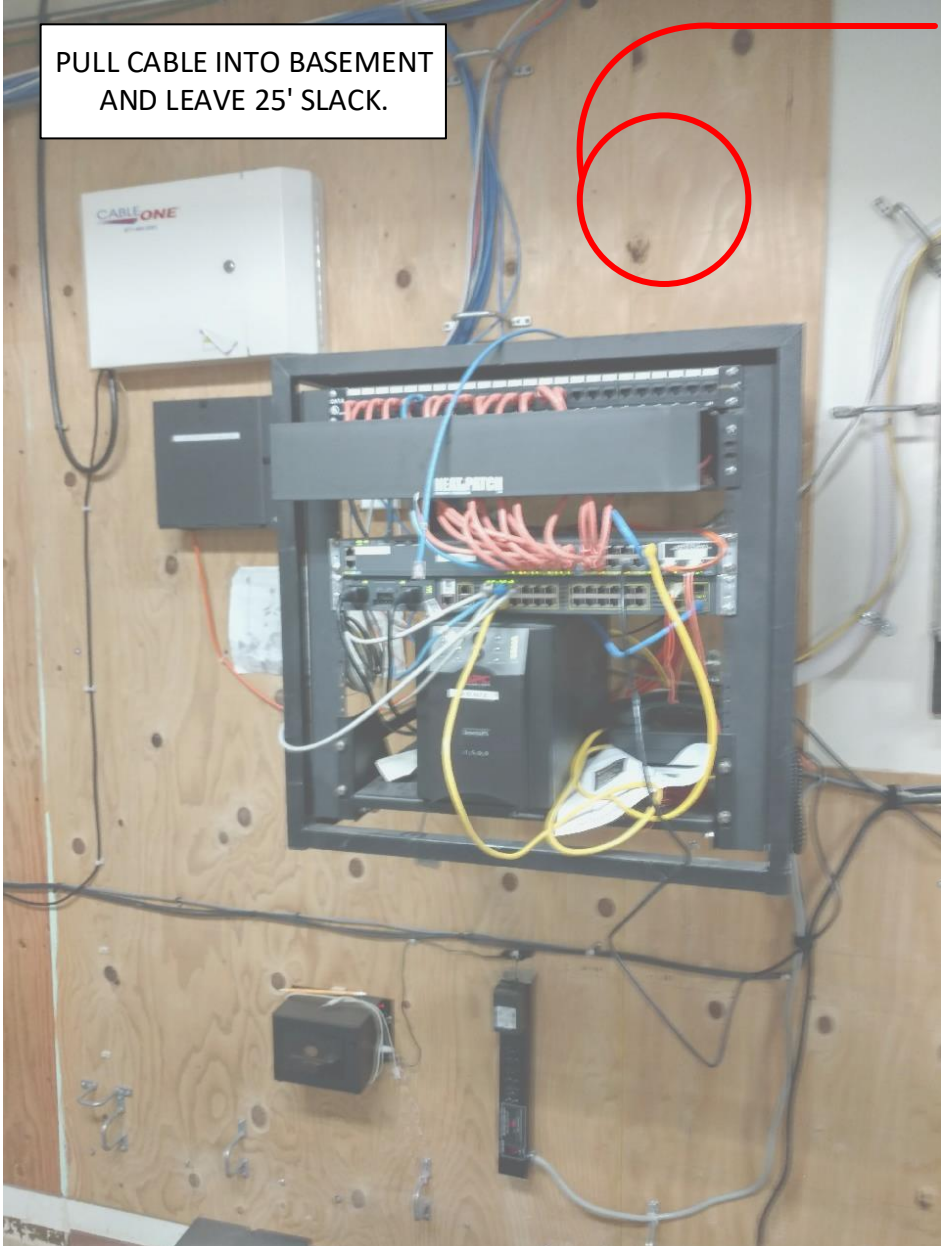
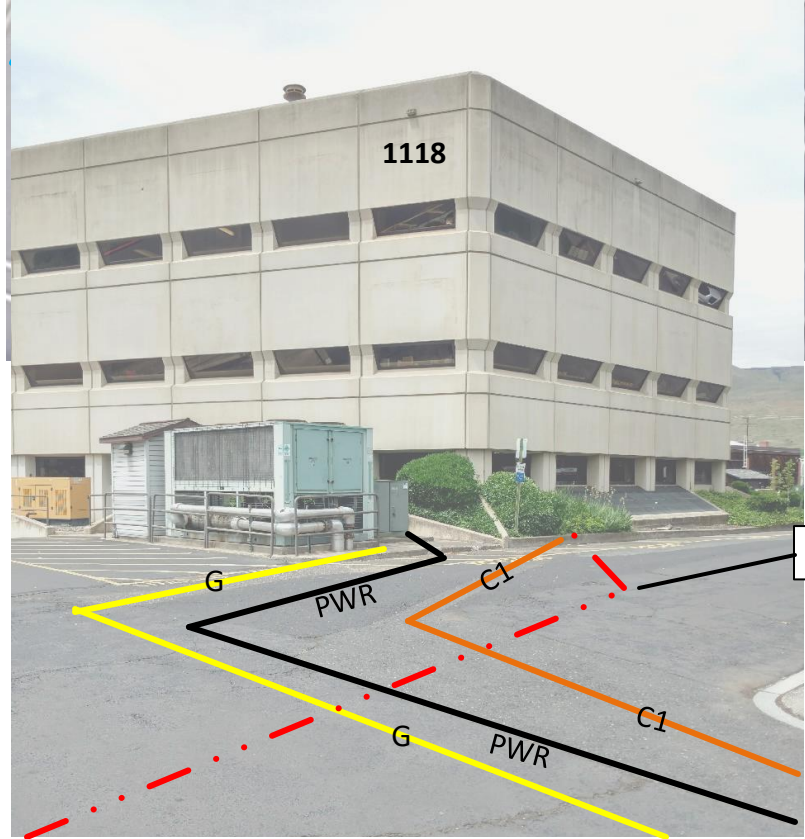
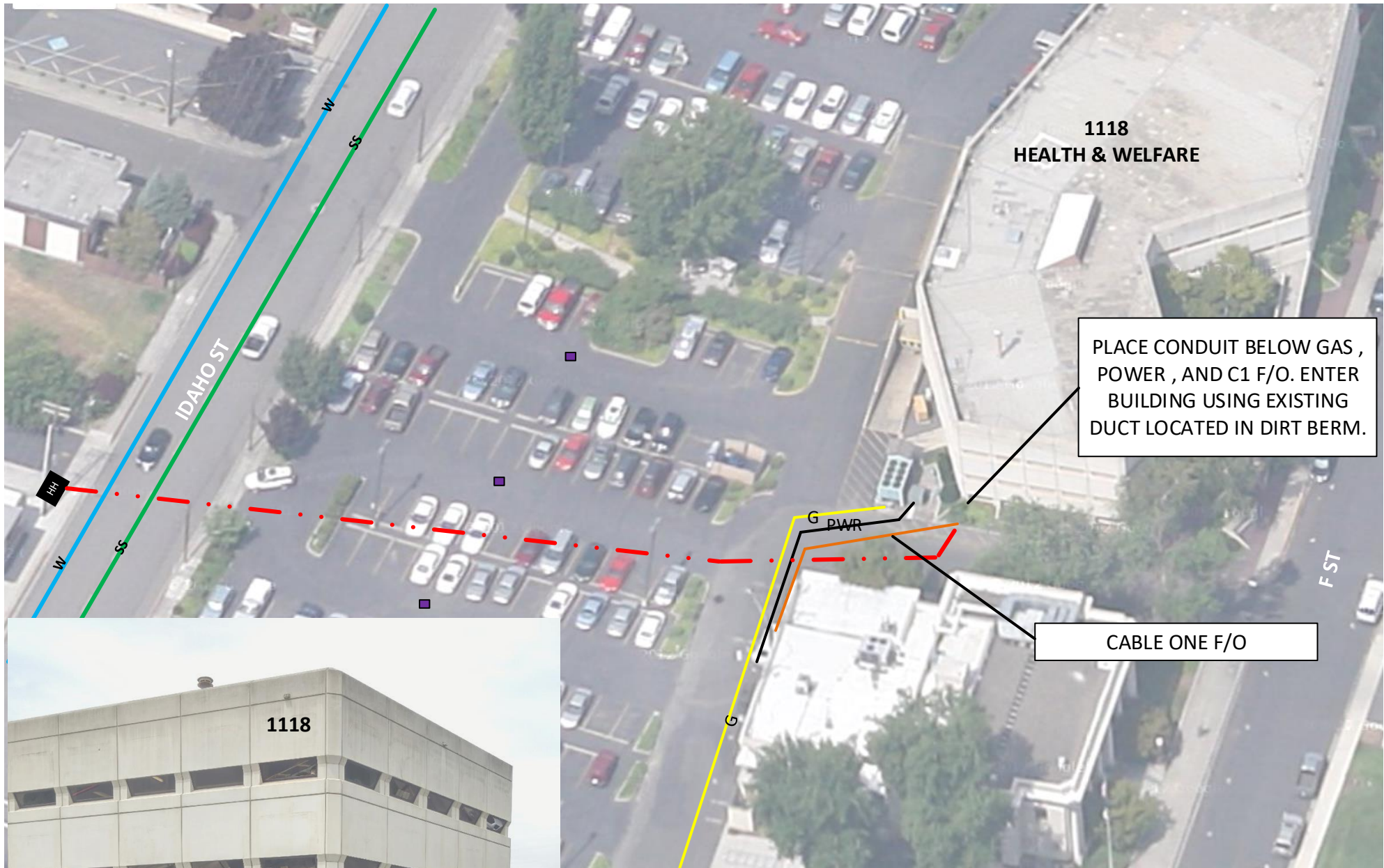




Drawing Name:Port of Lewiston	Drawn By: Ron Glessner 06-19-18				REV.	DESCRIPTION	DATE	BY	Contact Information  Port of Lewiston Dave Doeringsfeld 208-743-5531 Outside Plant Maintenance,Ilc Ron Glessner208-661-5648	State: ID County:Nez Perce City:Lewiston
	1118 F STREET				REV.	DESCRIPTION	DATE	BY		
	SIZE	FSCM NO	DWG NO	REV	REV.	DESCRIPTION	DATE	BY		Section: Township: Range: Legal:
	SCALE		SHEET 3		REV.	DESCRIPTION	DATE	BY		
					REV.	DESCRIPTION	DATE	BY		







Drawing Name:Port of Lewiston	Drawn By: Ron Glessner 06-19-18			
	1118 F STREET			
	SIZE	FSCMNO	DWG NO	REV
	SCALE		SHEET 4	

REV.	DESCRIPTION	DATE	BY
REV.	DESCRIPTION	DATE	BY
REV.	DESCRIPTION	DATE	BY
REV.	DESCRIPTION	DATE	BY
REV.	DESCRIPTION	DATE	BY

Contact Information

Port of Lewiston  
Dave Doeringsfeld  
208-743-5531  
Outside Plant Maintenance,Ilc  
Ron Glessner208-661-5648

State: ID  
County:Nez Perce  
City:Lewiston

Section:  
Township:  
Range:  
Legal:

