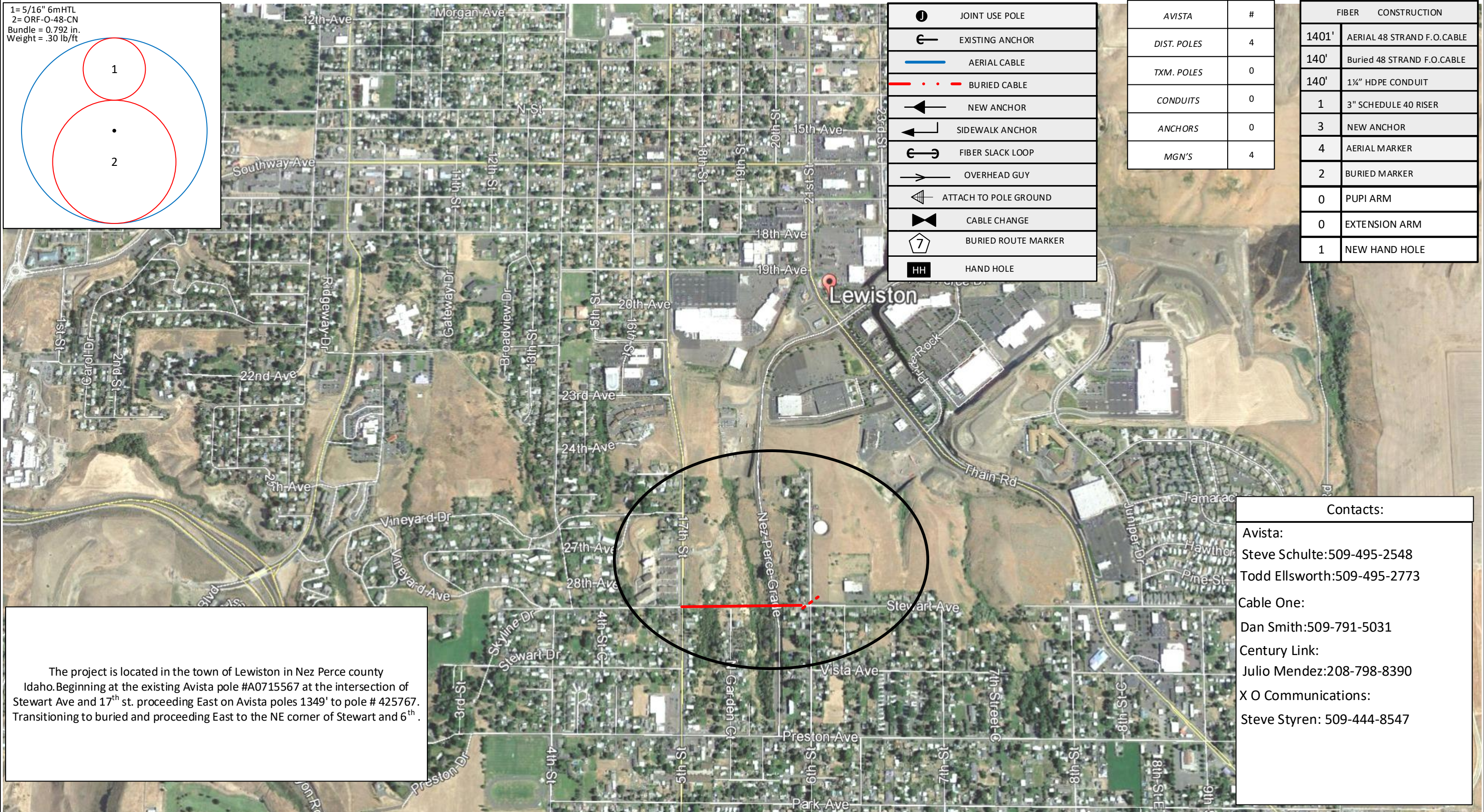
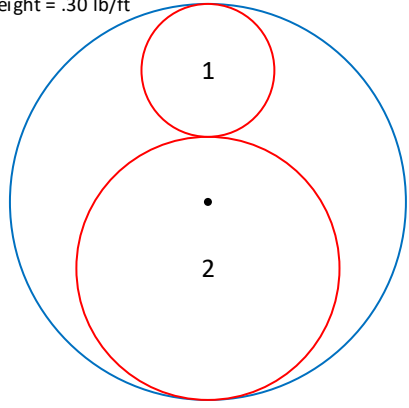


1= 5/16" 6mHTL
 2= ORF-O-48-CN
 Bundle = 0.792 in.
 Weight = .30 lb/ft



	JOINT USE POLE
	EXISTING ANCHOR
	AERIAL CABLE
	BURIED CABLE
	NEW ANCHOR
	SIDEWALK ANCHOR
	FIBER SLACK LOOP
	OVERHEAD GUY
	ATTACH TO POLE GROUND
	CABLE CHANGE
	BURIED ROUTE MARKER
	HAND HOLE

AVISTA	#
DIST. POLES	4
TXM. POLES	0
CONDUITS	0
ANCHORS	0
MGN'S	4

FIBER	CONSTRUCTION
1401'	AERIAL 48 STRAND F.O.CABLE
140'	Buried 48 STRAND F.O.CABLE
140'	1 1/2" HDPE CONDUIT
1	3" SCHEDULE 40 RISER
3	NEW ANCHOR
4	AERIAL MARKER
2	BURIED MARKER
0	PUPI ARM
0	EXTENSION ARM
1	NEW HAND HOLE

The project is located in the town of Lewiston in Nez Perce county Idaho. Beginning at the existing Avista pole #A0715567 at the intersection of Stewart Ave and 17th st. proceeding East on Avista poles 1349' to pole # 425767. Transitioning to buried and proceeding East to the NE corner of Stewart and 6th.

Contacts:
 Avista:
 Steve Schulte:509-495-2548
 Todd Ellsworth:509-495-2773
 Cable One:
 Dan Smith:509-791-5031
 Century Link:
 Julio Mendez:208-798-8390
 X O Communications:
 Steve Styren: 509-444-8547

Drawing Name:Port of Lewiston		Drawn By: Ron Glessner 4-11-17	
SEGMENT 8			
SIZE	FSCMNO	DWG NO	REV
SCALE	SHEET VICINITY		

REV.	DESCRIPTION	DATE	BY
	Revised	10-19-17	RG

Contact Information
 Port of Lewiston
 Dave Doeringsfeld
 208-743-5531
 Outside Plant Maintenance, llc
 Ron Glessner 208-661-5648

State: ID
 County: Nez Perce
 City: Lewiston
 Section:
 Township:
 Range:
 Legal:



GENERAL CONSTRUCTION NOTES

CONTRACTOR IS RESPONSIBLE FOR ALL PERMITS EXCEPT STATE HWY., COUNTY ROAD,RAILROAD OR WATER CROSSINGS.

RESTORATION OF ALL RIGHT OF WAY GROUND WILL BE RESTORED TO ORIGINAL CONDITION OR BETTER.

CONTRACTOR WILL COORDINATE WITH OSP MANAGER 24 HRS. PRIOR TO BEGINNING CONSTRUCTION.

OSP MANAGER WILL CONTACT BUILDING OWNER/TENANT 24 HRS. PRIOR TO BEGINNING CONSTRUCTION TO COORDINATE ACCESS TO BUILDINGS.

CONTRACTOR IS RESPONSIBLE FOR CALLING LOCATES AND IS RESPONSIBLE FOR REPAIR AND RESTORATION OF DAMAGED UTILITIES.

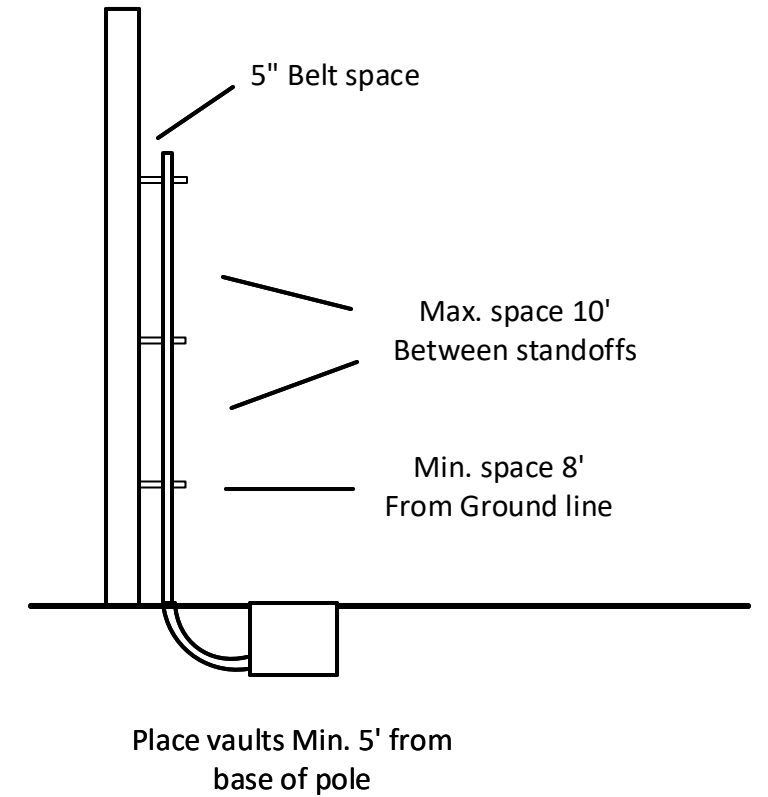
FOLLOW ALL NESC CONSTRUCTION GUIDELINES.

BURIED CONDUIT MUST CROSS UNDERNEATH ALL CITY UTILITIES

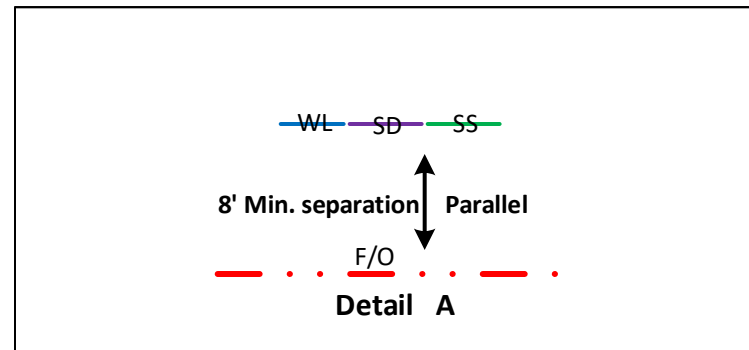
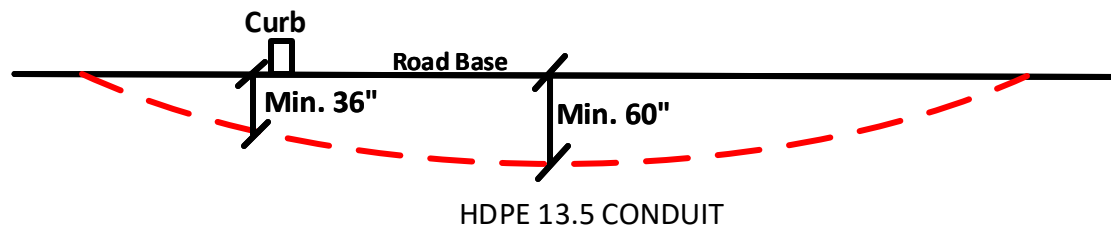
CONTRACTOR WILL HAVE ON SITE THE APPROVED DRAWINGS FROM THE UTILITY AND OR STATE,COUNTY,CITY,RAILROAD.

CONTRACTOR WILL PROVIDE CONDUIT AND HAND HOLES

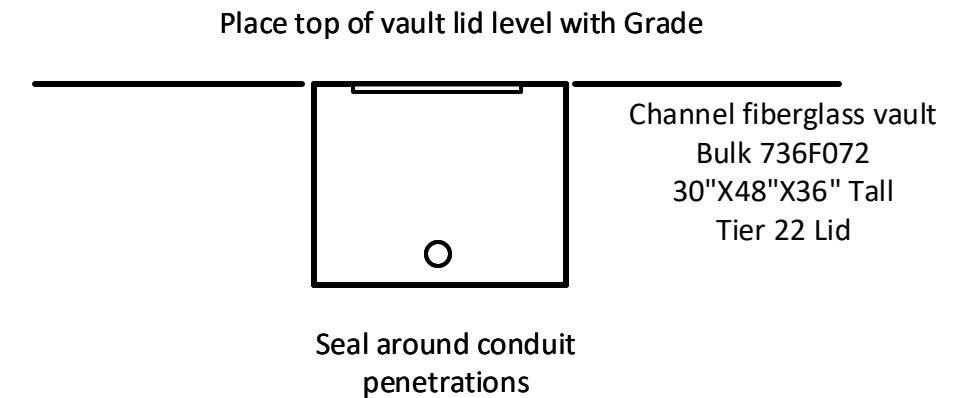
Riser Detail



Road crossing Detail



Vault/ Hand Hole Detail



Drawing Name:Port of Lewiston		Drawn By:Ron Glessner 04-11-17	
SEGMENT 8			
SIZE	FSCMNO	DWG NO	REV
SCALE	No scale	Construction notes	

REV.	Revised	10-19-17	RG
REV.	DESCRIPTION	DATE	BY
REV.	DESCRIPTION	DATE	BY
REV.	DESCRIPTION	DATE	BY
REV.	DESCRIPTION	DATE	BY

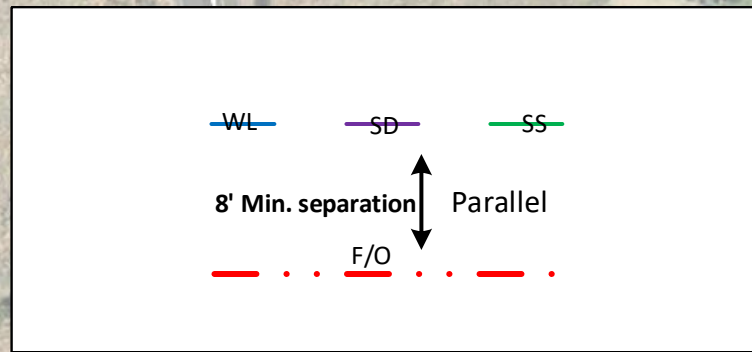
Contact Information		State:ID County:Nez Perce City:Lewiston
Port of Lewiston Dave Doeringsfeld 208-753-5531 Outside Plant Maintenance,llc Ron Glessner208-661-5648		Section: Township: Range: Legal:



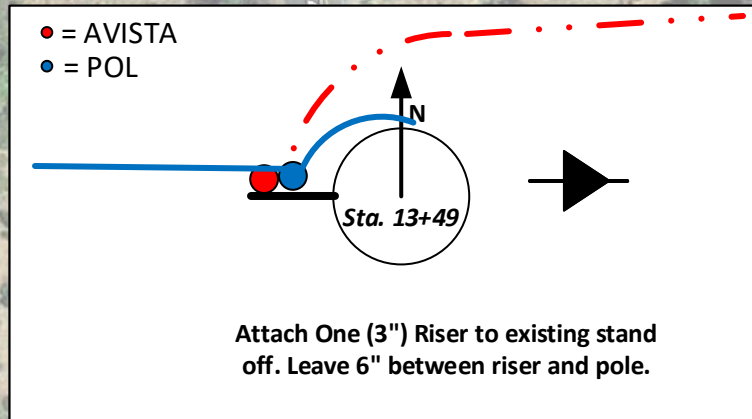
	JOINT USE POLE
	EXISTING ANCHOR
	AERIAL CABLE
	BURIED CABLE
	NEW ANCHOR
	SIDEWALK ANCHOR
	FIBER SLACK LOOP
	OVERHEAD GUY
	ATTACH TO POLE GROUND
	CABLE CHANGE
	BURIED ROUTE MARKER
	HAND HOLE

FIBER CONSTRUCTION	
1401'	AERIAL 48 STRAND F.O.CABLE
140'	Buried 48 STRAND F.O.CABLE
140'	1 1/4" HDPE CONDUIT
1	3" SCHEDULE 40 RISER
3	NEW ANCHOR
4	AERIAL MARKER
2	BURIED MARKER
0	PUPI ARM
0	EXTENSION ARM
1	NEW HAND HOLE

AVISTA	#
DIST. POLES	4
TXM. POLES	0
CONDUITS	0
ANCHORS	0
MGN'S	4



(1) BURIED 48 STRAND ARMORED SINGLE MODE FIBER OPTIC CABLE
INSIDE (1) 1 1/4" HDPE CONDUIT



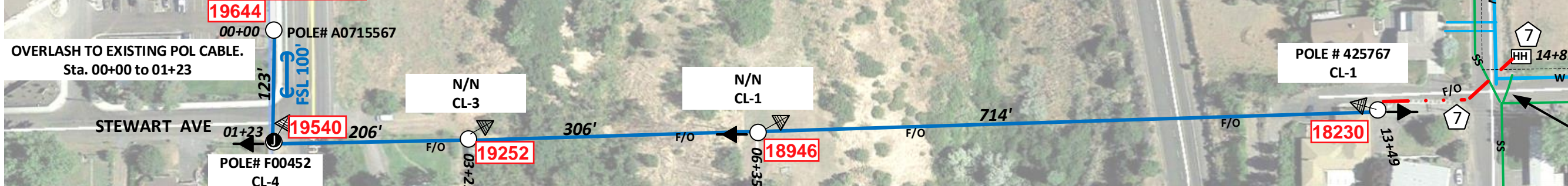
PLACE AERIAL MARKER AT EACH POLE

(1) AERIAL 48 STRAND SINGLE MODE FIBER OPTIC CABLE ON 5/16" EHS MESSENGER BUNDLE= 0.792in.
Weight= .30 lb/ft
19844 splice
19894 end

Place HH on McCann easement at NE Intersection of 6th and Stewart.
Leave 150' slack loop
Place Route marker at HH

Conduit placed under road. Reel of fiber at pole, awaiting easement to place hand hole.

PLACE CONDUIT BELOW CITY WATER AND SEWER LINES



Drawing Name: Port of Lewiston

Drawn By: Ron Glessner 4-11-17

SEGMENT 8 LEWISTON

SIZE	FSCMNO	DWG NO	REV
SCALE		SHEET 1	

REV.	DESCRIPTION	DATE	BY
Revised		10-19-17	RG

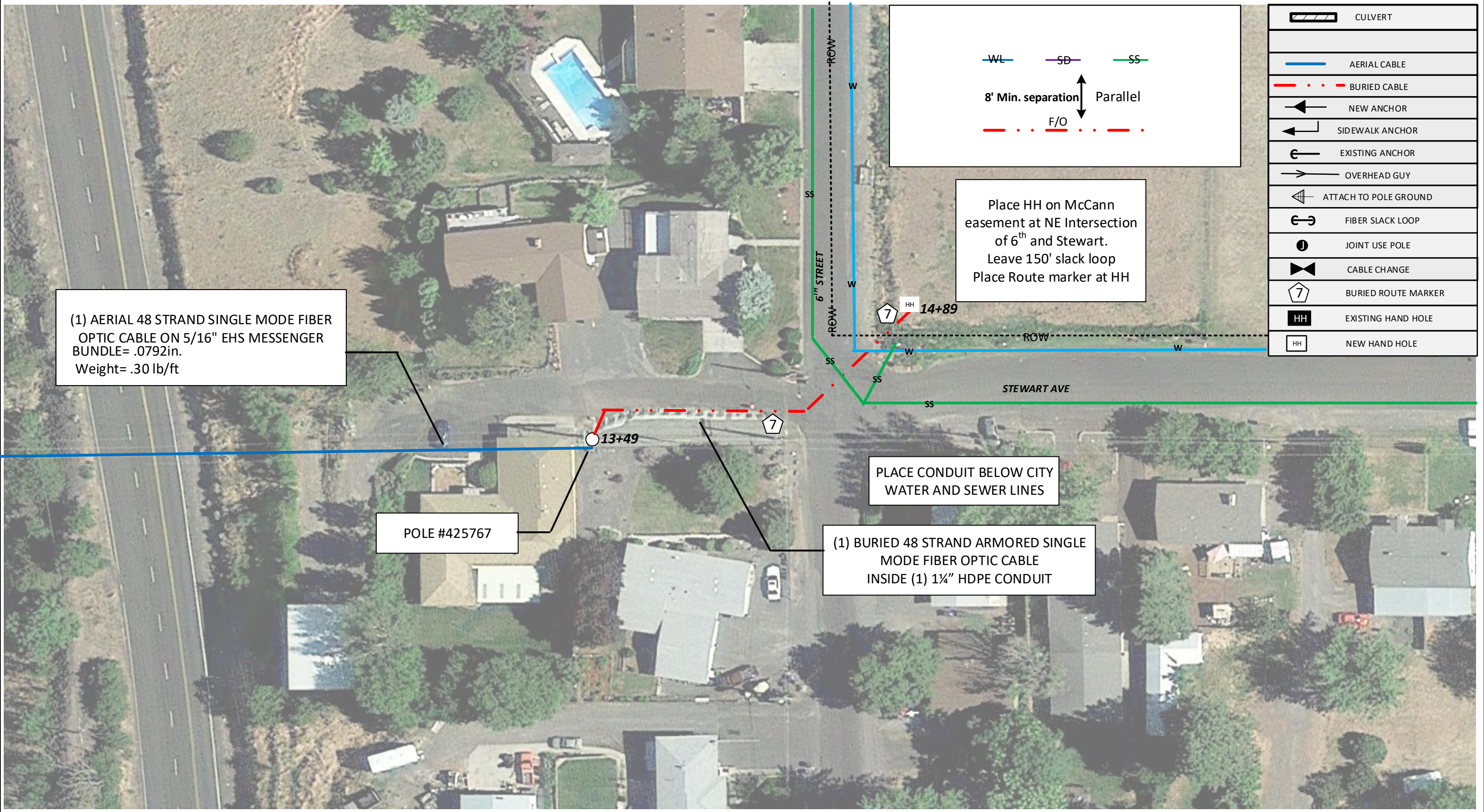
Contact Information

Port of Lewiston
Dave Doeringsfeld
208-743-5531
Outside Plant Maintenance, LLC
Ron Glessner 208-661-5648

State: ID
County: Nez Perce
City: Lewiston

Section:
Township:
Range:
Legal:





(1) AERIAL 48 STRAND SINGLE MODE FIBER OPTIC CABLE ON 5/16" EHS MESSENGER BUNDLE= .0792in. Weight= .30 lb/ft

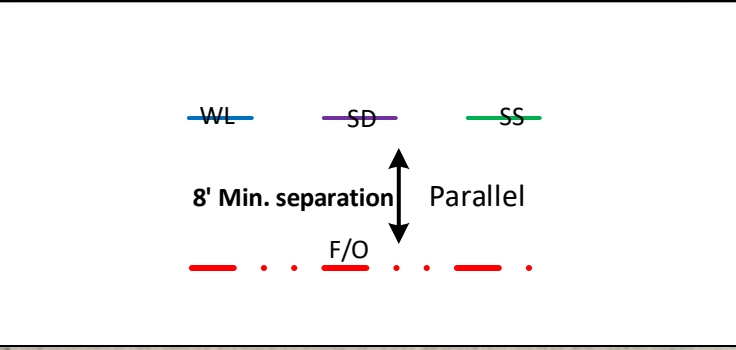
POLE #425767

(1) BURIED 48 STRAND ARMORED SINGLE MODE FIBER OPTIC CABLE INSIDE (1) 1 1/4" HDPE CONDUIT

PLACE CONDUIT BELOW CITY WATER AND SEWER LINES

Place HH on McCann easement at NE Intersection of 6th and Stewart. Leave 150' slack loop Place Route marker at HH

	CULVERT
	AERIAL CABLE
	BURIED CABLE
	NEW ANCHOR
	SIDEWALK ANCHOR
	EXISTING ANCHOR
	OVERHEAD GUY
	ATTACH TO POLE GROUND
	FIBER SLACK LOOP
	JOINT USE POLE
	CABLE CHANGE
	BURIED ROUTE MARKER
	EXISTING HAND HOLE
	NEW HAND HOLE



Drawing Name: Port of Lewiston			
SIZE	FSCM NO	DWG NO	REV
SCALE	SHEET 2		

Drawn By: Ron Glessner	
SEGMENT 8	

REV.	Revised	10-19-17	RG
REV.	DESCRIPTION	DATE	BY
REV.	DESCRIPTION	DATE	BY
REV.	DESCRIPTION	DATE	BY
REV.	DESCRIPTION	DATE	BY

Contact Information
 Port of Lewiston
 Dave Doeringsfeld
 208-743-5531
 Outside Plant Maintenance, llc
 Ron Glessner 208-661-5648

State: ID
 County: Nez Perce
 City: Lewiston
 Section:
 Township:
 Range:
 Legal:

