

Drawing Name: Port of Lewiston

Drawn By: Ron Glessner 06-26-18

VILLAGE CENTER CINEMAS

SIZE	FSCM NO	DWG NO	REV
SCALE		SHEET 1	

REV.	DESCRIPTION	DATE	BY

Contact Information

Port of Lewiston
 Dave Doeringsfeld
 208-743-5531
 Outside Plant Maintenance, LLC
 Ron Glessner 208-661-5648

State: ID
 County: Nez Perce
 City: Lewiston

Section:
 Township:
 Range:
 Legal:



GENERAL CONSTRUCTION NOTES

CONTRACTOR IS RESPONSIBLE FOR ALL PERMITS EXCEPT STATE HWY., COUNTY ROAD,RAILROAD OR WATER CROSSINGS.

RESTORATION OF ALL RIGHT OF WAY GROUND WILL BE RESTORED TO ORIGINAL CONDITION OR BETTER.

CONTRACTOR WILL COORDINATE WITH OSP MANAGER 24 HRS. PRIOR TO BEGINNING CONSTRUCTION. CALL OSP MANAGER WHEN CONSTRUCTION IS COMPLETED. RON 208-661-5648

OSP MANAGER WILL CONTACT BUILDING OWNER/TENANT 24 HRS. PRIOR TO BEGINNING CONSTRUCTION TO COORDINATE ACCESS TO BUILDINGS.

CONTRACTOR IS RESPONSIBLE FOR CALLING LOCATES AND IS RESPONSIBLE FOR REPAIR AND RESTORATION OF DAMAGED UTILITIES.

FOLLOW ALL NESC CONSTRUCTION GUIDELINES.

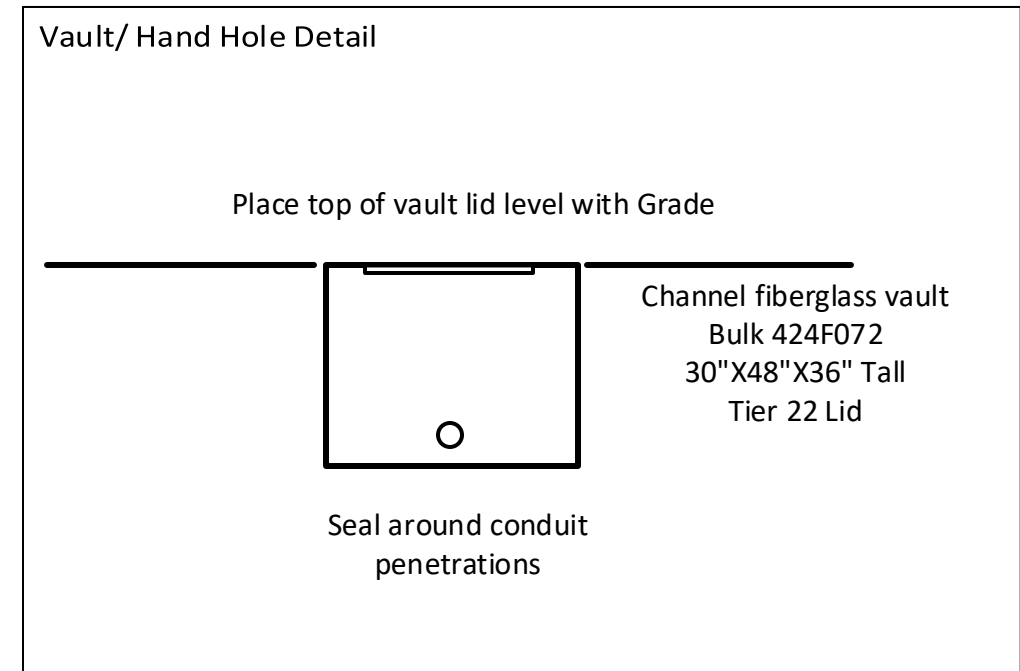
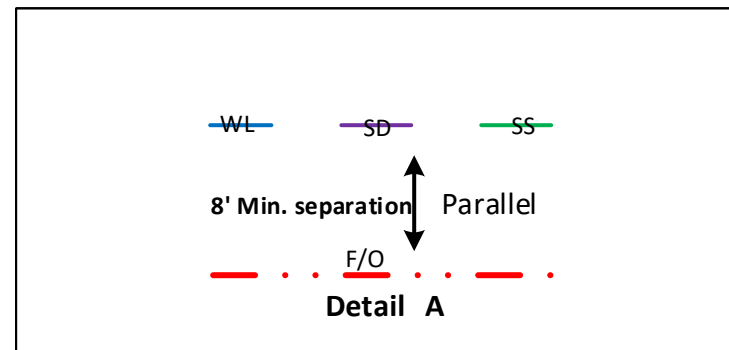
CONTRACTOR WILL HAVE ON SITE THE APPROVED DRAWINGS FROM THE UTILITY AND OR STATE,COUNTY,CITY,RAILROAD.

CONTRACTOR WILL PROVIDE CONDUIT , HAND HOLES , ANCHORS, AERIAL HARDWARE , LOCATE WIRE

PORT OF LEWISTON (POL) WILL PROVIDE , FIBER OPTIC CABLE , AERIAL MARKERS , AND LINE ROUTE MARKERS.

FIBER	CONSTRUCTION
0'	AERIAL 48 STRAND F.O.CABLE
1430'	Buried 48 STRAND F.O.CABLE
628'	1 1/4" HDPE CONDUIT
0'	3" SCHEDULE 40 RISER
0	NEW ANCHOR
0	AERIAL MARKER
4	BURIED MARKER
0	PUPI ARM
0	EXTENSION ARM
2	NEW HAND HOLE

	CULVERT
	DIRECTIONAL BORE
	EXISTING CONDUIT
	BURIED CABLE
	NEW ANCHOR
	SIDEWALK ANCHOR
	EXISTING ANCHOR
	OVERHEAD GUY
	ATTACH TO POLE GROUND
	FIBER SLACK LOOP
	JOINT USE POLE
	CABLE CHANGE
	BURIED ROUTE MARKER
	EXISTING HAND HOLE
	NEW HAND HOLE



Drawing Name:Port of Lewiston		Drawn By:Ron Glessner 06-26-18				Contact Information				State:ID. County:Nez Perce City: Lewiston	
		VILLAGE CENTER CINEMAS				Port of Lewiston Dave Doeringsfeld 208-743-5531 Outside Plant Maintenance,Ilc Ron Glessner208-661-5648				Section: Township: Range: Legal:	
SIZE	FSCM NO	DWG NO		REV		REV.	DESCRIPTION	DATE	BY		
SCALE	No scale	SHEET 2				REV.	DESCRIPTION	DATE	BY		



PULL ONE 48ct SINGLE MODE FIBER OPTIC CABLE IN EXISTING POL CONDUIT ALONG N. SIDE OF NEZ PERCE DR. FROM EXISTING HH TO NEW HH PLACE NEW HH AT POL STUB LEAVE 100' SLACK IN EACH HH

15904 eoc
16004 end

15832 N
15670 S

15258 eoc
15232 end

Existing communications duct was utilized as shown.

ATTACH ONE 1 1/4" SCH.40 CONDUIT TO W. WALL OF CINEMA FROM SIDEWALK TO ROOF TOP. LAY 1 1/4" SCH.40 CONDUIT ACROSS ROOF TO ANTENNA ENTRY LOCATION

PLACE ONE 1 1/4" CONDUIT WITH DIRECTIONAL DRILL FROM NEW HH ON N. SIDE OF NEZ PERCE DR. TO NEW HH W. OF CINEMAS LEAVE 100' SLACK IN HH PLACE ONE 1 1/4" CONDUIT TO W. SIDE OF CINEMA

	CULVERT
	DIRECTIONAL BORE
	EXISTING POL CONDUIT
	BURIED CABLE
	NEW ANCHOR
	SIDEWALK ANCHOR
	EXISTING ANCHOR
	OVERHEAD GUY
	ATTACH TO POLE GROUND
	FIBER SLACK LOOP
	JOINT USE POLE
	CABLE CHANGE
	BURIED ROUTE MARKER
	EXISTING HAND HOLE
	NEW HAND HOLE

Drawing Name: Port of Lewiston

Drawn By: Ron Glessner 06-26-18

VILLAGE CENTER CINEMAS

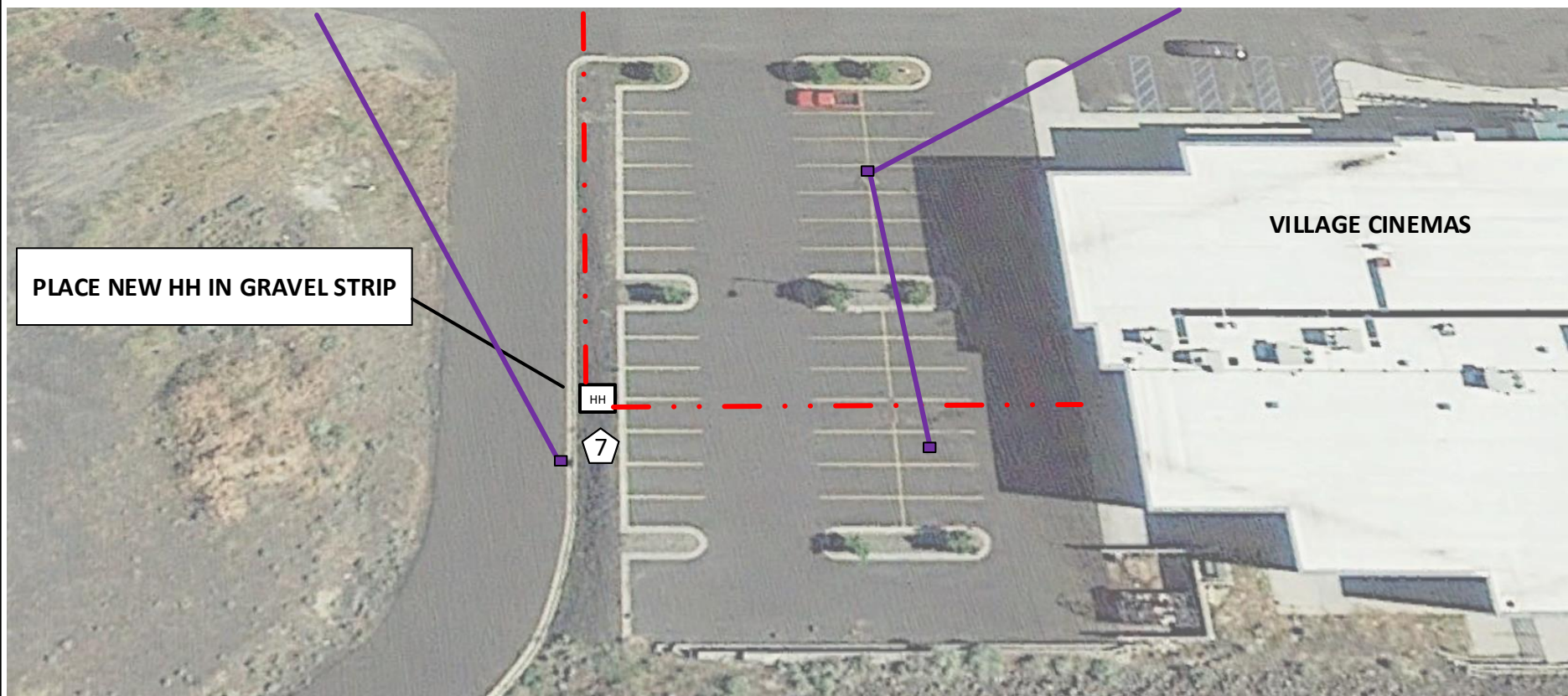
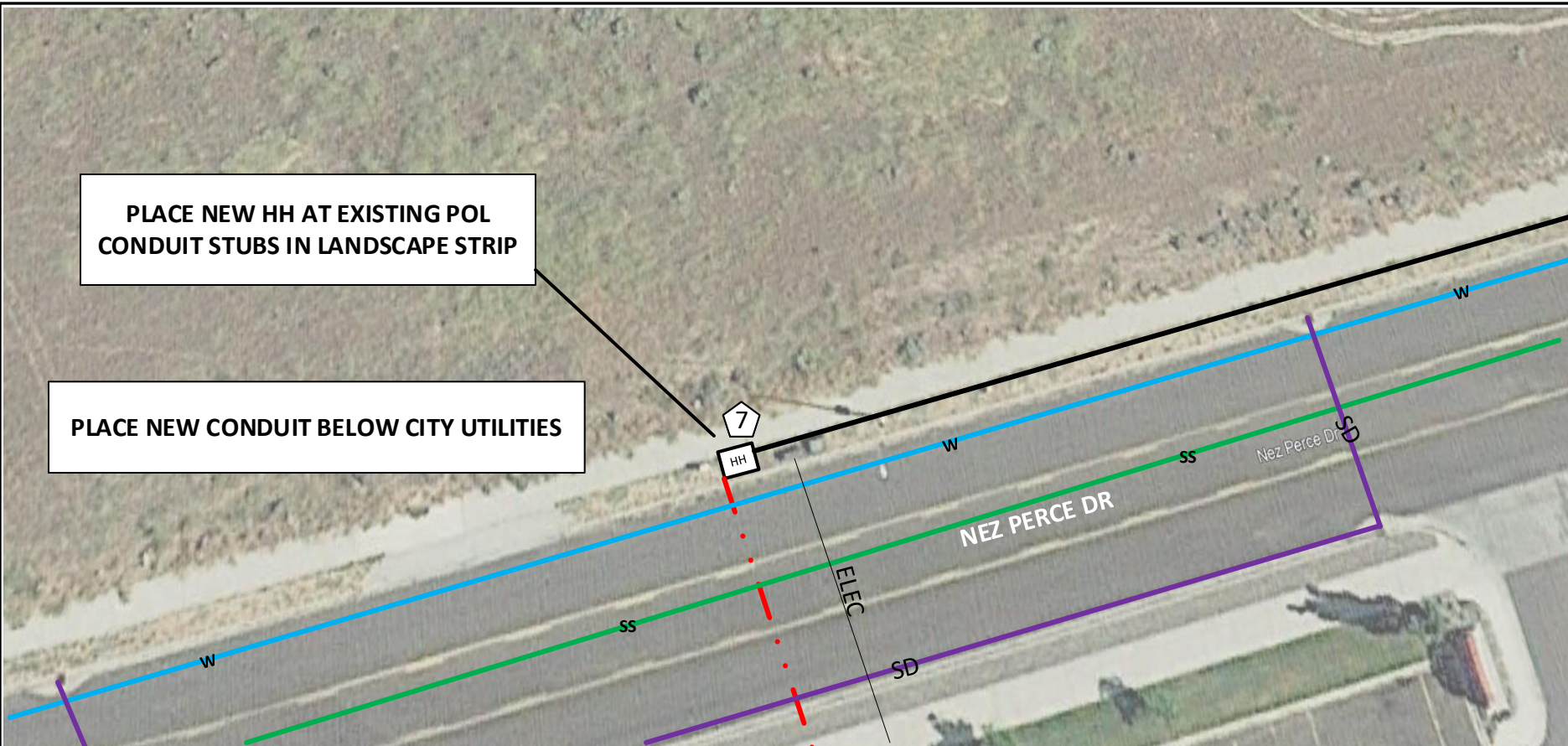
SIZE	FSCM NO	DWG NO	REV
SCALE		SHEET 3	

REV.	DESCRIPTION	DATE	BY

Contact Information
 Port of Lewiston
 Dave Doeringsfeld
 208-743-5531
 Outside Plant Maintenance, llc
 Ron Glessner 208-661-5648

State: ID
 County: Nez Perce
 City: Lewiston
 Section:
 Township:
 Range:
 Legal:





Drawing Name: Port of Lewiston		Drawn By: Ron Glessner 06-26-18	
VILLAGE CENTER CINEMAS			
SIZE	FSCM NO	DWG NO	REV
SCALE	SHEET 4		

REV.	DESCRIPTION	DATE	BY

Contact Information

Port of Lewiston
 Dave Doeringsfeld
 208-743-5531
 Outside Plant Maintenance, llc
 Ron Glessner 208-661-5648

State: ID
 County: Nez Perce
 City: Lewiston

Section:
 Township:
 Range:
 Legal:

