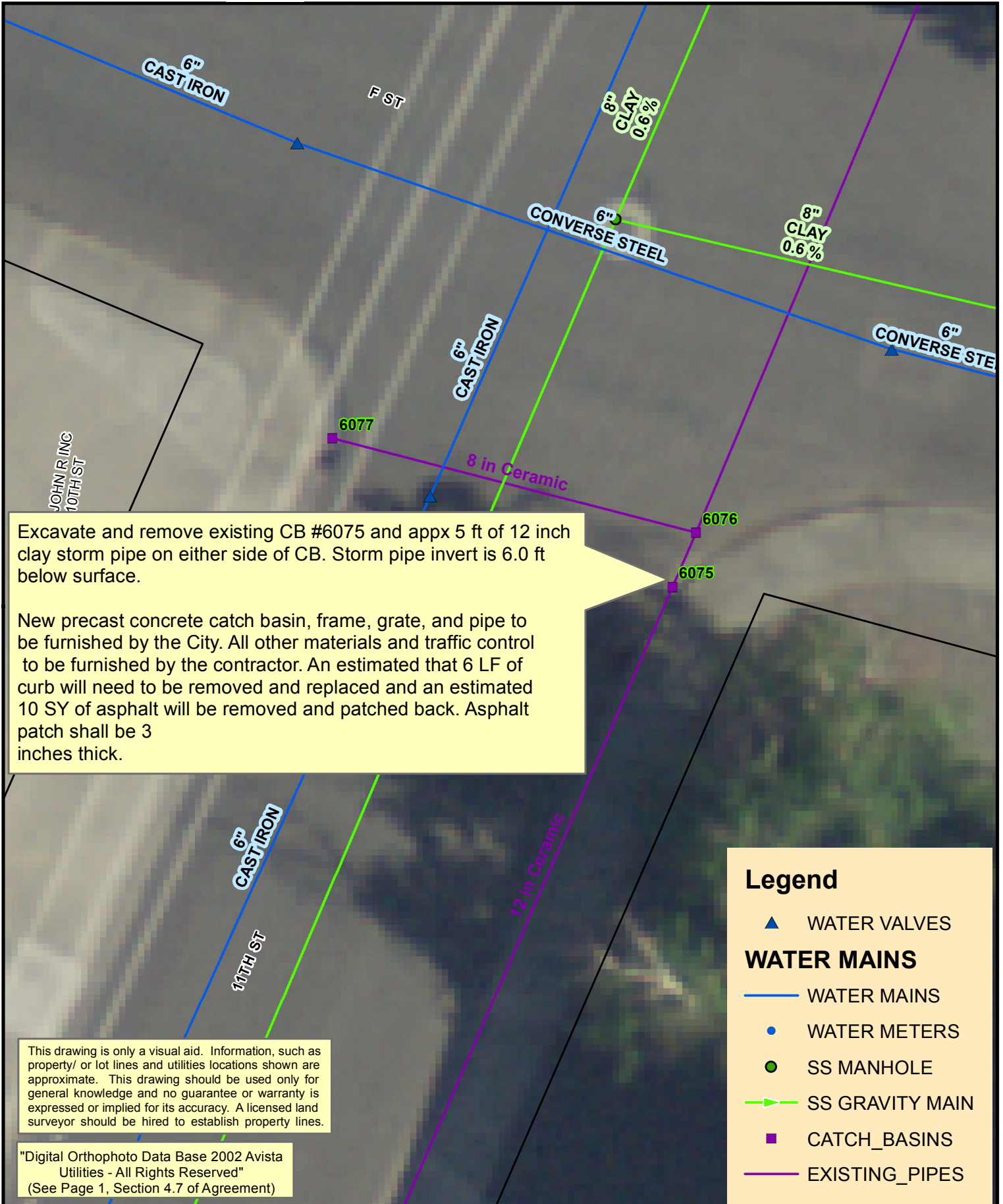


1 inch = 10 feet



CITY OF LEWISTON

11th & F St Repair



Excavate and remove existing CB #6075 and appx 5 ft of 12 inch clay storm pipe on either side of CB. Storm pipe invert is 6.0 ft below surface.

New precast concrete catch basin, frame, grate, and pipe to be furnished by the City. All other materials and traffic control to be furnished by the contractor. An estimated that 6 LF of curb will need to be removed and replaced and an estimated 10 SY of asphalt will be removed and patched back. Asphalt patch shall be 3 inches thick.

This drawing is only a visual aid. Information, such as property/ or lot lines and utilities locations shown are approximate. This drawing should be used only for general knowledge and no guarantee or warranty is expressed or implied for its accuracy. A licensed land surveyor should be hired to establish property lines.

"Digital Orthophoto Data Base 2002 Avista Utilities - All Rights Reserved"
(See Page 1, Section 4.7 of Agreement)

Legend

- ▲ WATER VALVES
- WATER MAINS**
- WATER MAINS
- WATER METERS
- SS MANHOLE
- ▶ SS GRAVITY MAIN
- CATCH_BASINS
- EXISTING_PIPES