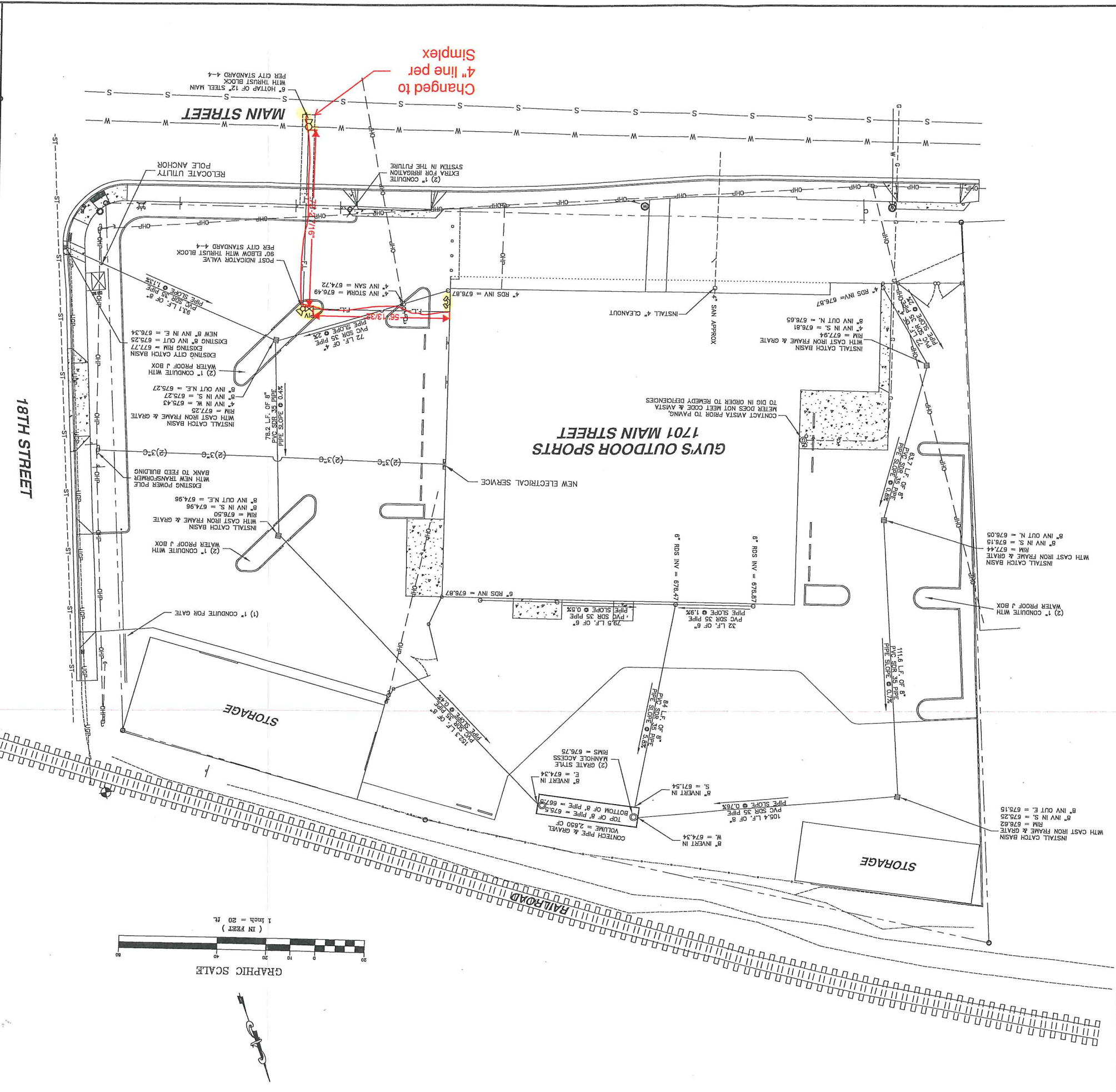


1) SPRINKLER SYSTEM BY CONTRACTOR.
 2) THE EXISTING UTILITY LOCATIONS SHOW WHERE DETERMINED BY COLLECTING EXISTING UTILITY DRAWINGS FROM VARIOUS UTILITY ENTRIES, CALLING IN A UTILITY ENGINEER AND THEN MARKING THE UTILITY LOCATES. THEREFOR, MAJALINE ENGINEERING PLLC DOES NOT WARRANT THE ACCURACY OF THE INFORMATION PROVIDED AND PERFORMED BY OTHERS.

C6 CONDUIT SPECIFICATIONS

1) ALL CONDUIT IS 2" SCHEDULE 40 GRAY PVC
 2) CONDUIT BENDS AND SWEEPS ARE 24"
 3) MINIMUM SEPARATION DISTANCE TO WATER, STORM, SANITARY UTILITIES IS 2' FROM EDGE OF PIPE.
 4) CONDUITS MAY BE PUT IN A COMMON TRENCH, CONDUIT ROUTES ARE DRAWN FOR CLARITY. CONTRACTOR SHALL ADJUST COMMON TRENCH LOCATION TO AVOID CONFLICTS WITH OTHER UTILITIES AND TO MAINTAIN MINIMUM SEPARATION REQUIREMENTS.

C6 UTILITY NOTES



GUYS OUTDOOR SPORTS
 1701 MAIN STREET
 LEWISTON IDAHO 83601
 UTILITY PLAN

MAJALINE ENGINEERING & DRAFTING
 "an affordable alternative"
 4025 EAST COURT
 LEWISTON, IDAHO 83601
 TEL: (208) 750-1082
 FAX: (208) 791-8855

REGISTERED PROFESSIONAL ENGINEER
 MAJALINE R. CHARLES, R. E.
 10962
 4200-17
 1996

NO.	DATE	BY	FILENAME	REVISIONS
0				

SHEET 6 OF 10
 PROJECT NO.: 00532
 DATE: 4-20-17
 SCALE: 1" = 20'
 DESIGNED BY: CRF
 CHECKED BY: CRF