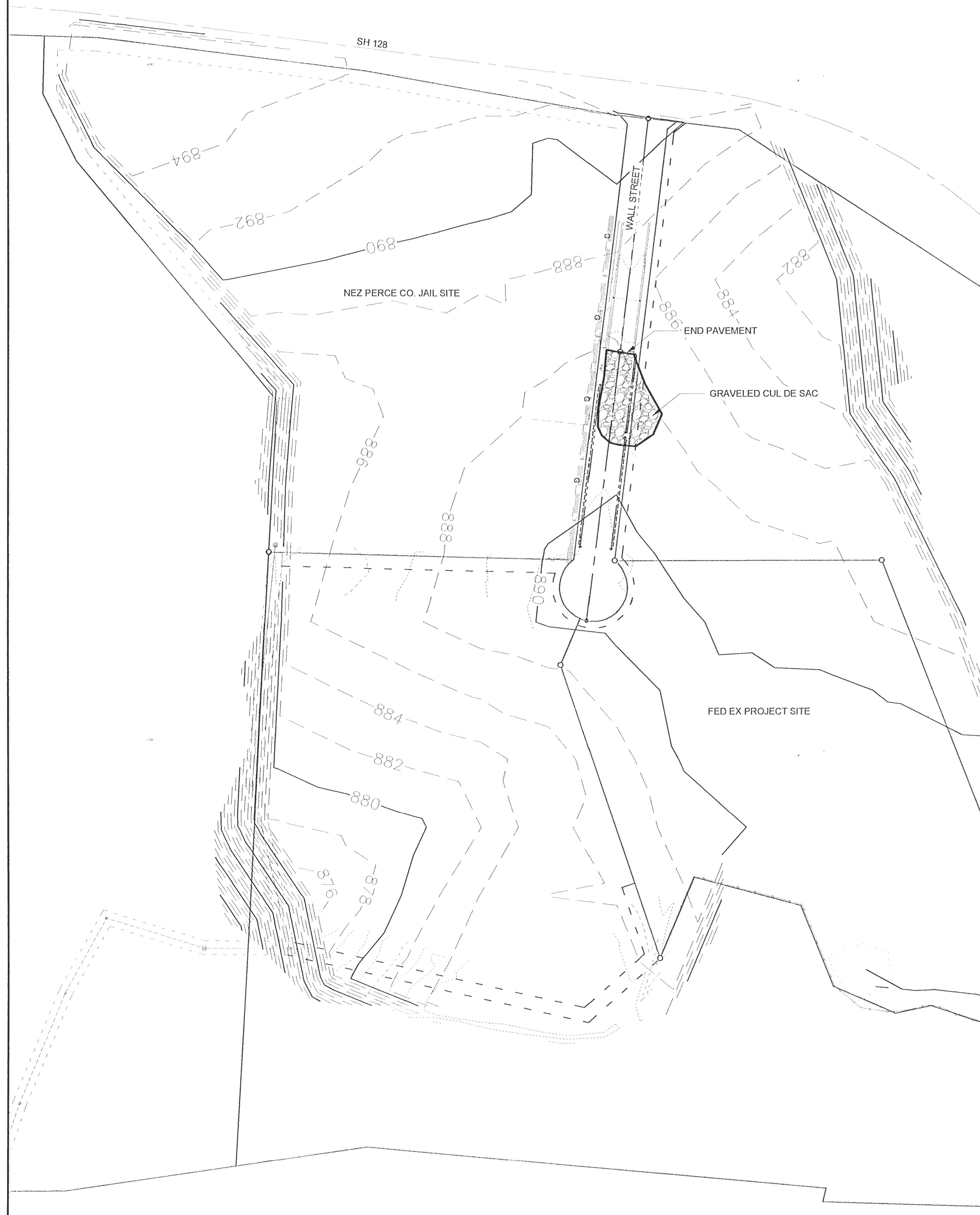
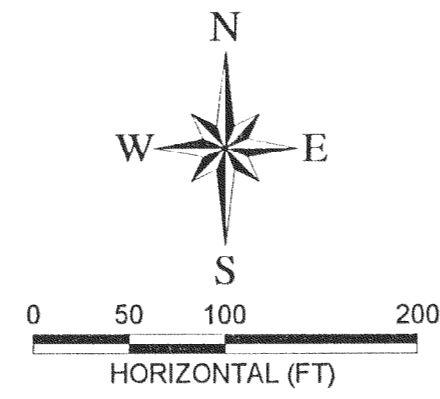
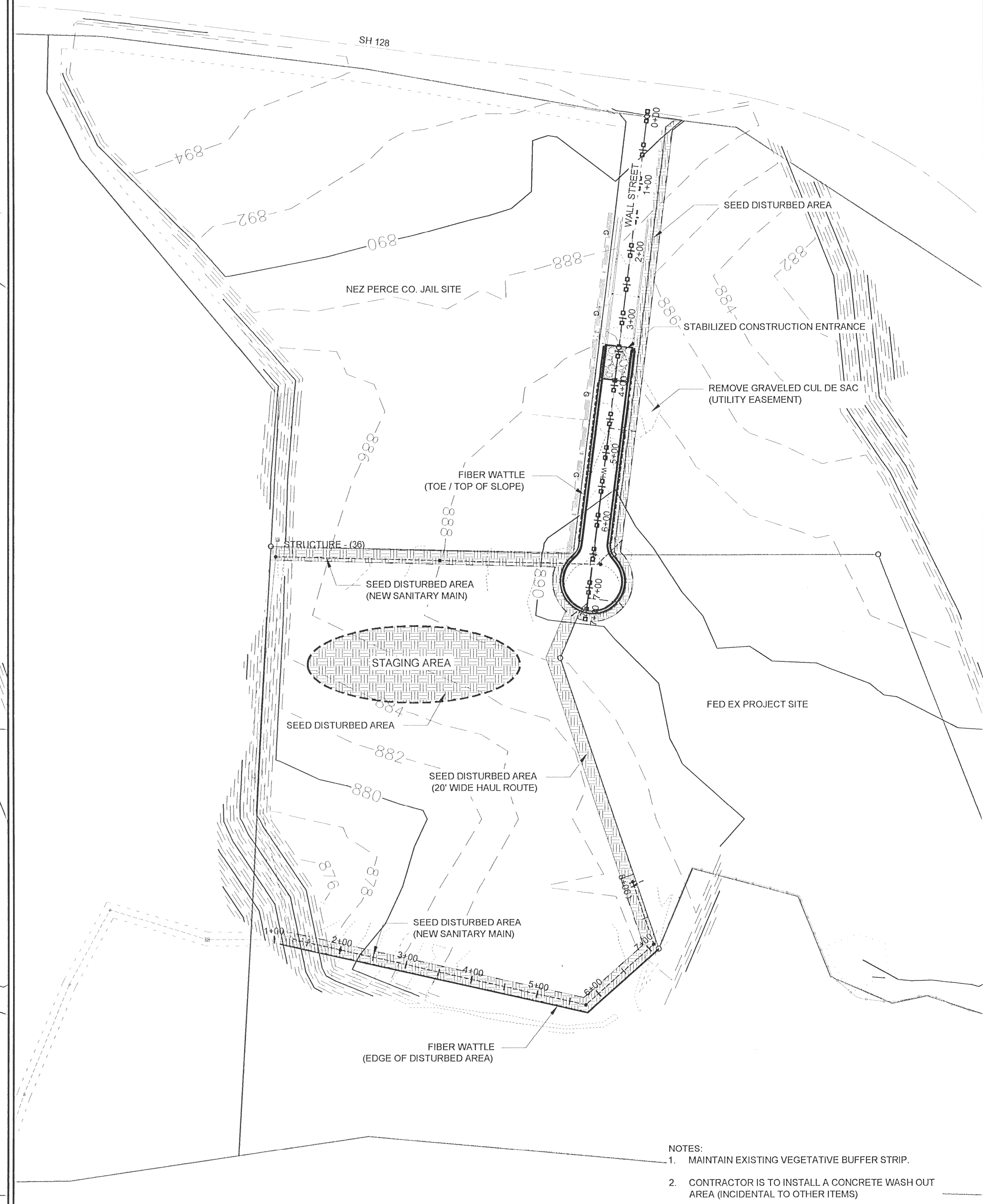
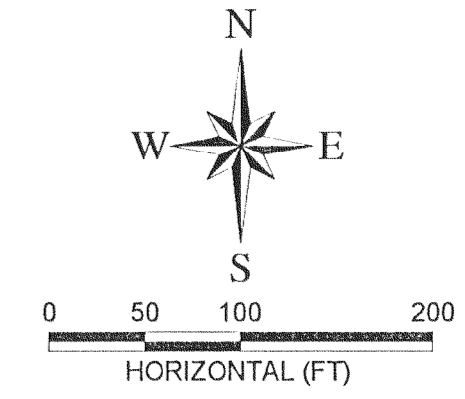


EXISTING



PROPOSED



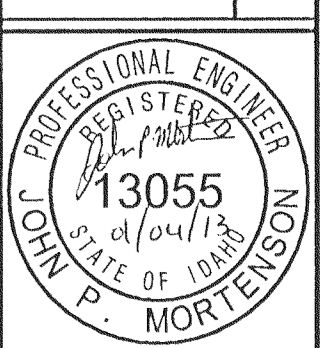
- NOTES:
1. MAINTAIN EXISTING VEGETATIVE BUFFER STRIP.
 2. CONTRACTOR IS TO INSTALL A CONCRETE WASH OUT AREA (INCIDENTAL TO OTHER ITEMS)

77 Southway, Suite C
 Lewiston, Id. 83501
 Phone: (208) 745-3818
 Fax: (208) 743-3819

THIS DOCUMENT AND THE IDEAS AND DESIGNS INCORPORATED HEREIN, AS AN INSTRUMENT OF PROFESSIONAL SERVICES, IS THE PROPERTY OF RIEDEL ENGINEERING, INC. AND IS NOT TO BE USED, IN WHOLE OR IN PART, FOR ANY OTHER PROJECT, OR THE EXTENSION OF THIS PROJECT, WITHOUT THE WRITTEN AUTHORIZATION OF RIEDEL ENGINEERING, INC.

NO.	DATE	BY	DESCRIPTION
1	1/4/13	BJW	REVISED PER CITY COMMENTS
2			
3			
4			
5			
6			

HARRY WALL INDUSTRIAL PARK
 INFRASTRUCTURE EXTENSION PROJECT
 2013
 SWPPP



DESIGNED	BJW
DESIGN CHECKED	JRW / JPM
DETAILED	BJW
DRAWING CHECKED	JRW / JPM
FILE NAME	2060-SWPPP.dwg
DRAWING DATE	1/4/13
DRAWING SCALE	AS SHOWN
SHEET	10 OF 10