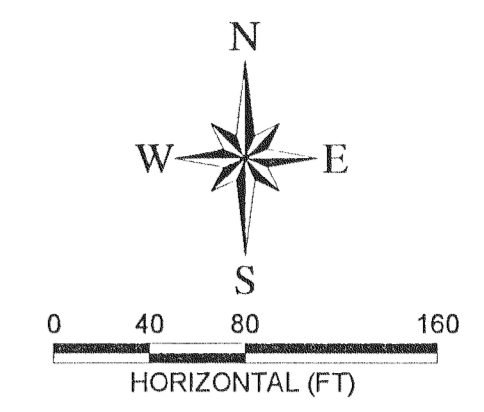
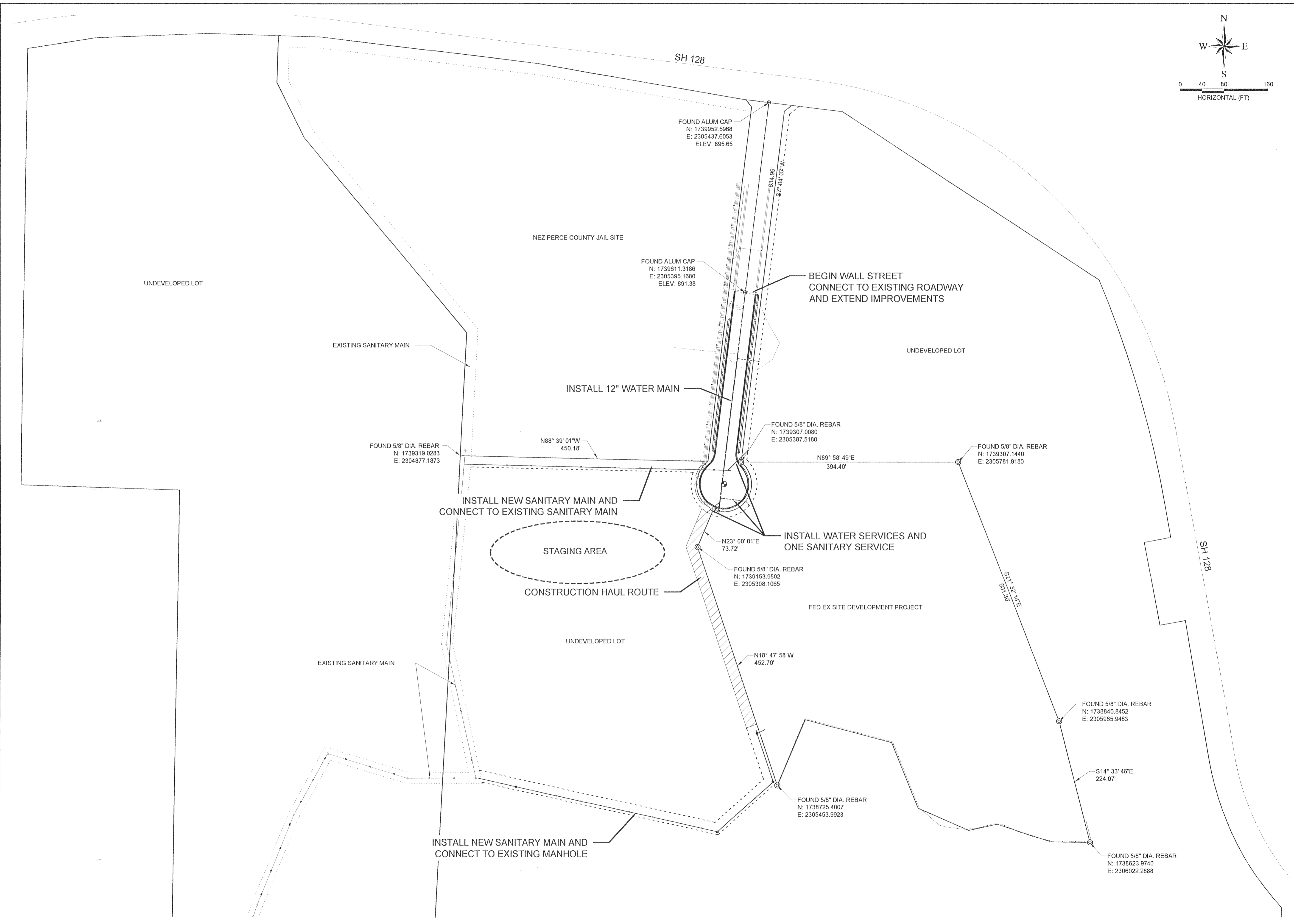


PLOT DATE: 1/4/2013
 E:\PROJECTS\2060-HARRY WALL INDUSTRIAL SITE EXPANSION\CADD\CIVIL 3D\DRAWINGS\2060-PLP.DWG



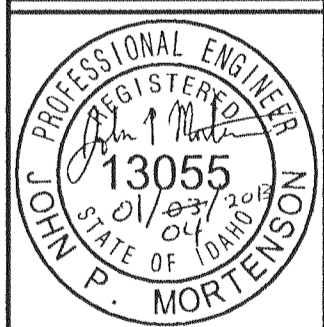
77 Southway, Suite C
 Lewiston, Id. 83501
 Phone: (208) 743-3818
 Fax: (208) 743-3819

RIEDEL
 Engineering

THIS DOCUMENT AND THE IDEAS AND DESIGN INFORMATION HEREIN IS AN INSTRUMENT OF PROFESSIONAL SERVICES, IS THE PROPERTY OF RIEDEL ENGINEERING, INC. AND IS NOT TO BE USED, IN WHOLE OR IN PART, FOR ANY OTHER PROJECT, OR THE EXTENSION OF THIS PROJECT WITHOUT THE WRITTEN AUTHORIZATION OF RIEDEL ENGINEERING, INC.

NO.	DATE BY	DESCRIPTION
1	1/4/12 B.J.W.	REVISED PER CITY COMMENTS
2		
3		
4		
5		
6		

HARRY WALL INDUSTRIAL PARK
 INFRASTRUCTURE EXTENSION PROJECT
 2013
 PROJECT LAYOUT PLAN



DESIGNED
 B.J.W.
 DESIGN CHECKED
 J.R.W./J.P.M.
 DETAILED
 B.J.W.
 DRAWING CHECKED
 J.R.W./J.P.M.
 FILE NAME
 2060-PLP.dwg
 DRAWING DATE
 1/4/13
 DRAWING SCALE
 AS SHOWN