

GENERAL NOTES FOR ALL TYPES OF CURB AND GUTTER

1. SECURE A PERMIT FOR CONSTRUCTION, BEFORE BEGINNING CONSTRUCTION IN PUBLIC RIGHT-OF-WAY.
2. GRADE, ALIGNMENT AND CURB TYPE SHALL BE AS APPROVED BY THE CITY ENGINEER.
3. ALIGNMENT AND GRADE STAKED TO LIP OF GUTTER (LIP) SHALL BE ESTABLISHED OR APPROVED BY THE CITY ENGINEER.
4. THE TOLERANCE FOR FINISHED CURB AND GUTTER - MAX. VARIATION OF SURFACE FLATNESS: 1/4 INCH IN 10 FEET MAX. VARIATION FROM TRUE POSITION (DESIGN GRADE): 1/2 INCH
5. BASE MATERIAL SHALL BE 4" OF 3/4 OR 5/8 INCH MINUS CRUSHED AGGREGATE BASE MATERIAL COMPACTED TO 95% MAXIMUM DENSITY AS DETERMINED BY STANDARD PROCTOR AS PER AASHTO T99. ALL FILL OR BACKFILL AREAS SHALL BE PLACED IN 6" MAXIMUM LIFTS.
6. CONCRETE SHALL BE 3,000 PSI MINIMUM AT 28 DAYS, MAXIMUM WATER/CEMENT RATIO SHALL BE 0.5 (LB/LB), 5" MAX. SLUMP, AIR CONTENT (%) 6.5 ±1.5.
7. DUMMY JOINTS AT 10 FOOT INTERVALS AND AT CURB RADII, 3/4" TO 1" DEEP. CONSTRUCTION JOINTS LOCATIONS AS DIRECTED BY CITY ENGINEER. DIFFERENTIAL ELEVATION BETWEEN ADJACENT SECTIONS SHALL NOT EXCEED 1/4".
8. THE CONTRACTOR ARE REQUIRED BY THE PUBLIC WORKS DEPARTMENT TO MARK STUB-OUTS AND VALVES IN THE UNCURED CONCRETE.
9. THE CONTRACTOR OR OWNER SHALL NOTIFY THE PUBLIC WORKS DEPARTMENT FOR INSPECTION AFTER THE FORMS ARE SET AND THE PUBLIC WORKS DEPARTMENT SHALL BE NOTIFIED NO LESS THAN 2 WORKING DAYS BEFORE PLACEMENT OF CONCRETE FOR A FINAL INSPECTION. FAILURE TO NOTIFY THE PUBLIC WORKS DEPARTMENT IS GROUNDS FOR REJECTION OF CURB AND GUTTER.
10. CONCRETE SURFACE TO HAVE A LIGHT BROOM FINISH PARALLEL WITH THE LENGTH OF THE CURB.
11. APPLY UNIFORM COAT OF REZ-SEAL OR APPROVED EQUIVALENT CURING COMPOUND TO EXPOSED CONCRETE IMMEDIATELY AFTER FINISHING..
12. ROLLED CURB AND GUTTER SHALL NOT BE USED:
 - A. ON STREETS IN COMMERCIAL AND INDUSTRIAL ZONED AREAS.
 - B. ON STREETS WITH LONGITUDINAL (LENGTHWISE) GRADES IN EXCESS OF 6%.
 - C. ON ANY ARTERIAL OR COLLECTOR
 - D. WITHOUT PRIOR APPROVAL OF THE CITY ENGINEER.
 - E. WHEN SIDEWALK IS LOCATED AT THE BACK OF CURB.

CITY OF LEWISTON, IDAHO
PUBLIC WORKS DEPARTMENTGENERAL NOTES
FOR ALL TYPES OF
CURB AND GUTTER

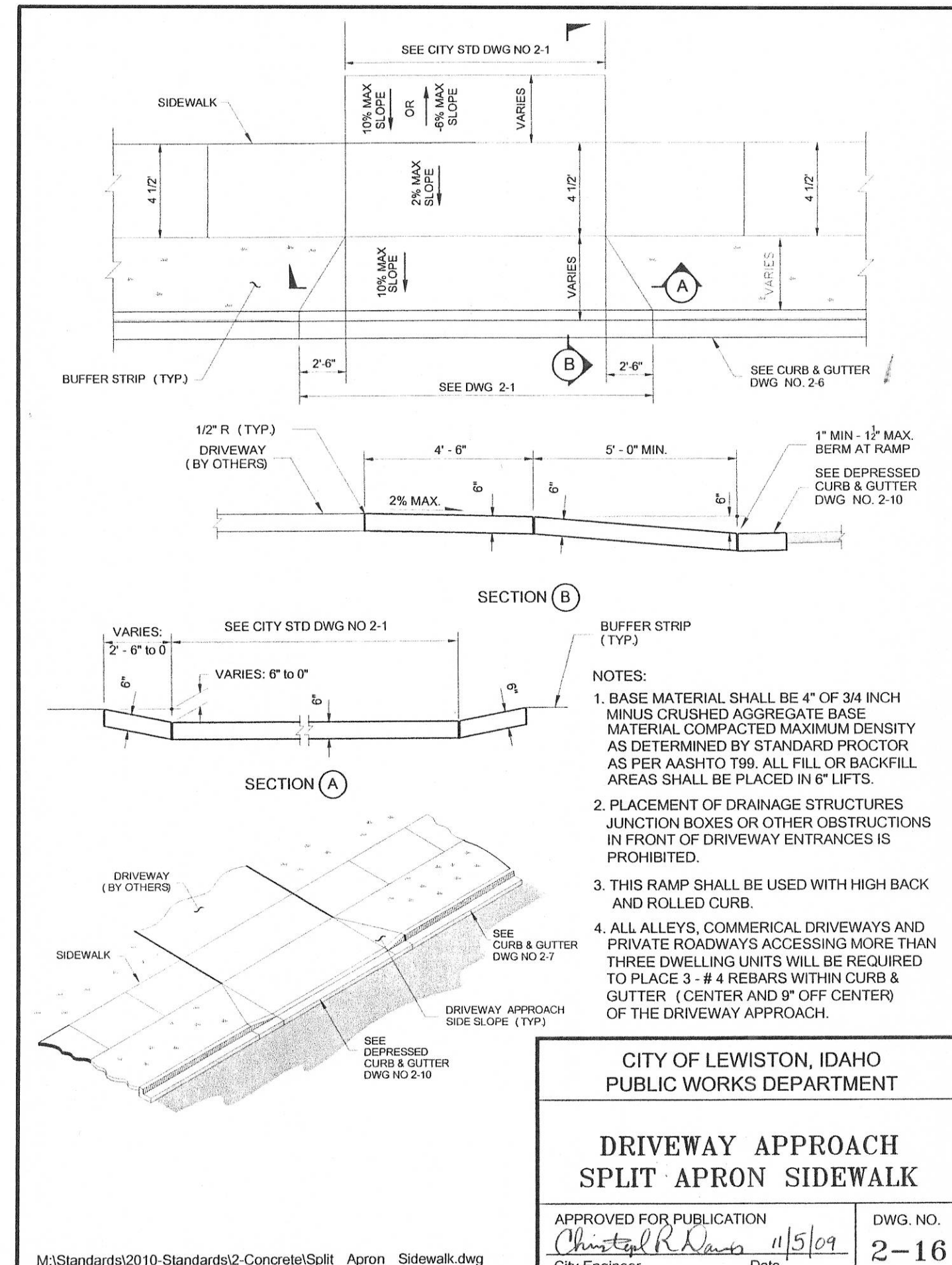
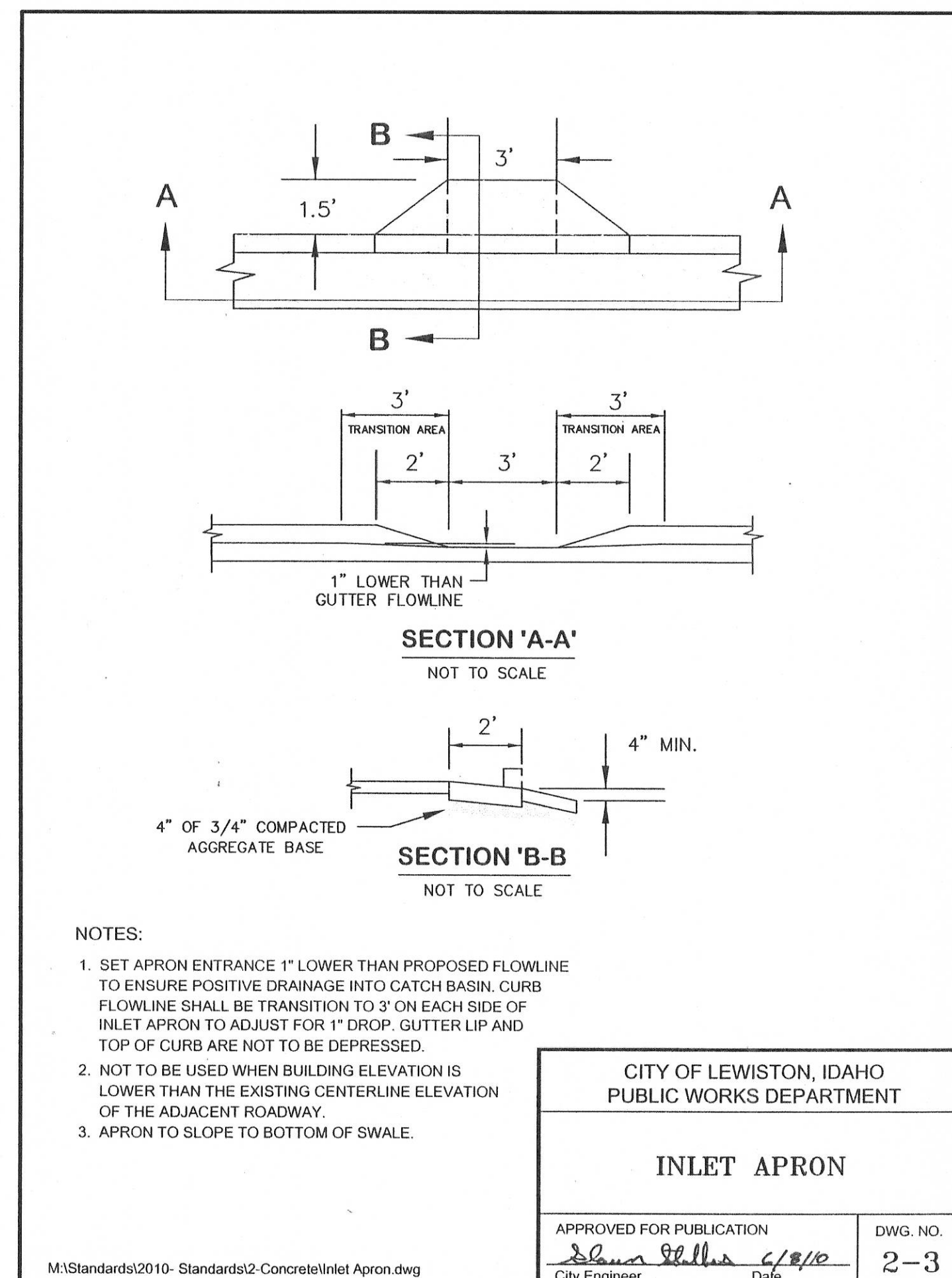
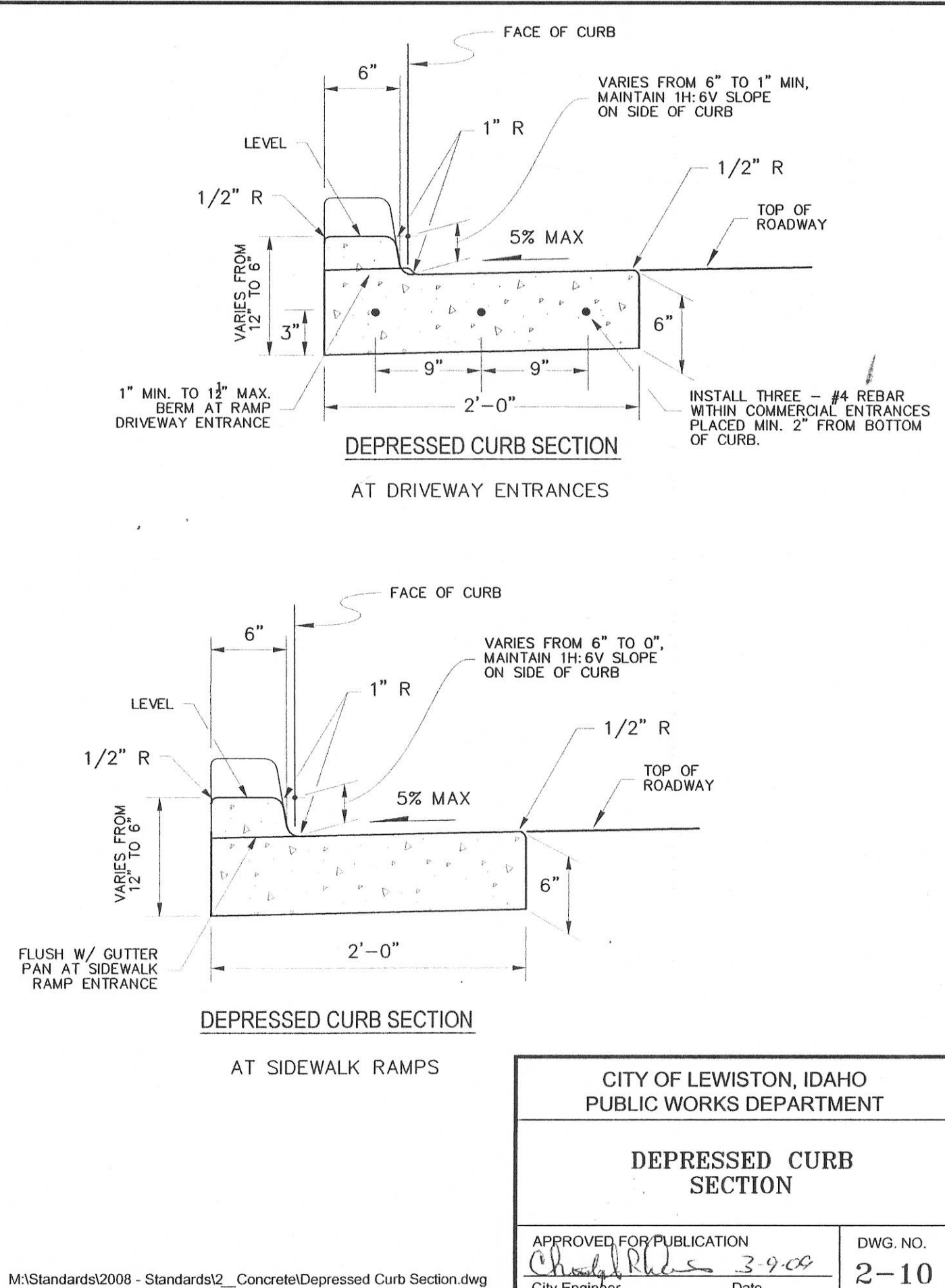
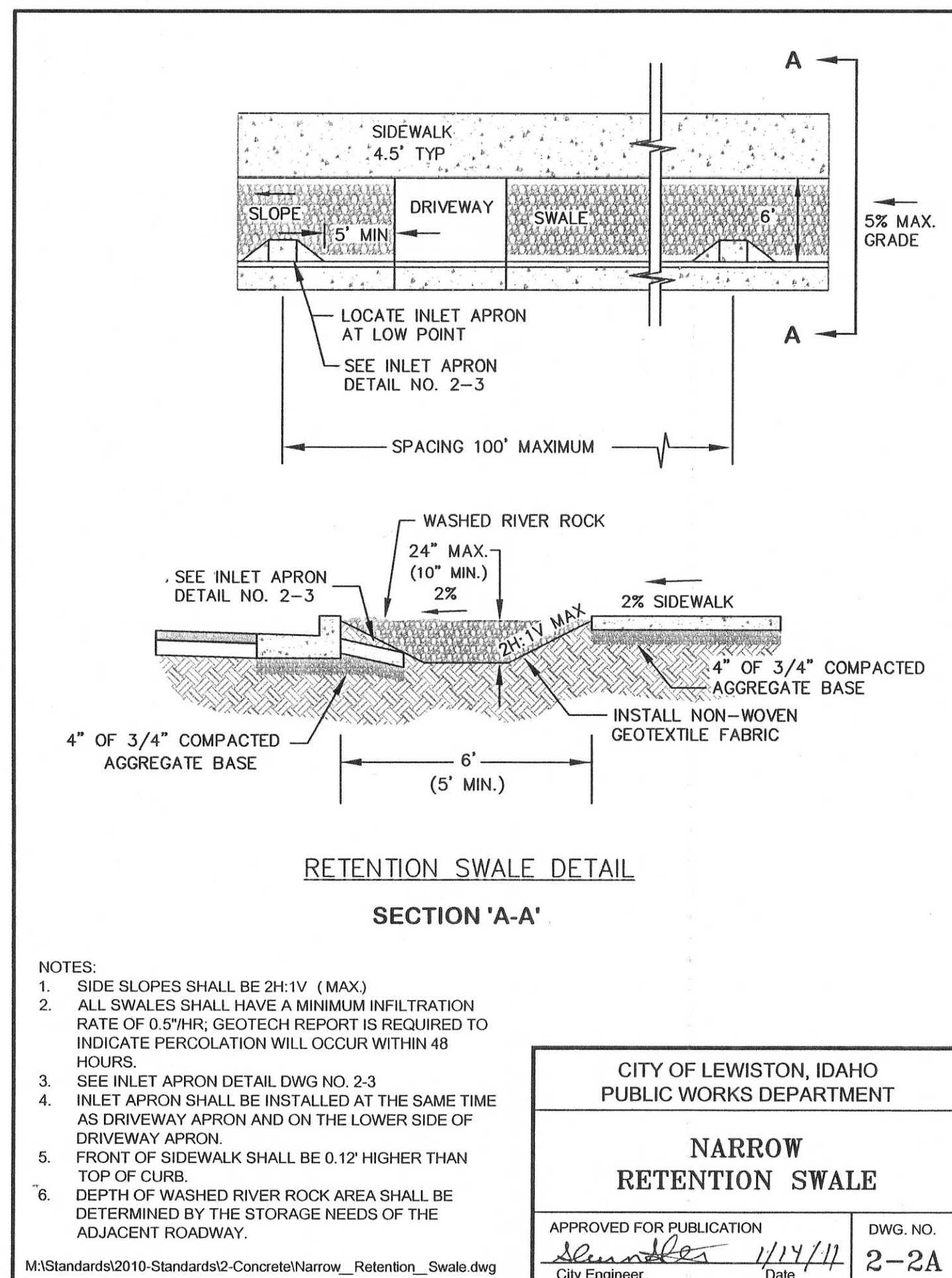
APPROVED FOR PUBLICATION

Shawn Stiller 11/23/10
City Engineer Date

DWG. NO.

2-6

M:\Standards\2010-Standards\2-Concrete\General_Notes_Concrete.dwg



REVISIONS

NO. DATE BY DESCRIPTION

1

2

3

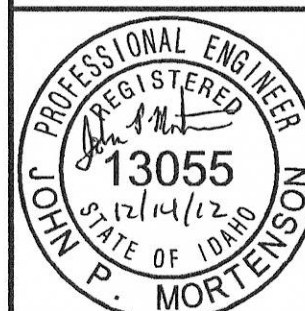
4

5

6

HARRY WALL INDUSTRIAL PARK
INFRASTRUCTURE EXTENSION PROJECT
2013

DETAILS



DESIGNED

BJW

DESIGN CHECKED

JR/W / JPM

DETAILED

BJW

DRAWING CHECKED

JR/W / JPM

FILE NAME

2060-DETAILS.dwg

DRAWING DATE

12/14/12

DRAWING SCALE

AS SHOWN

SHEET 8 OF 10