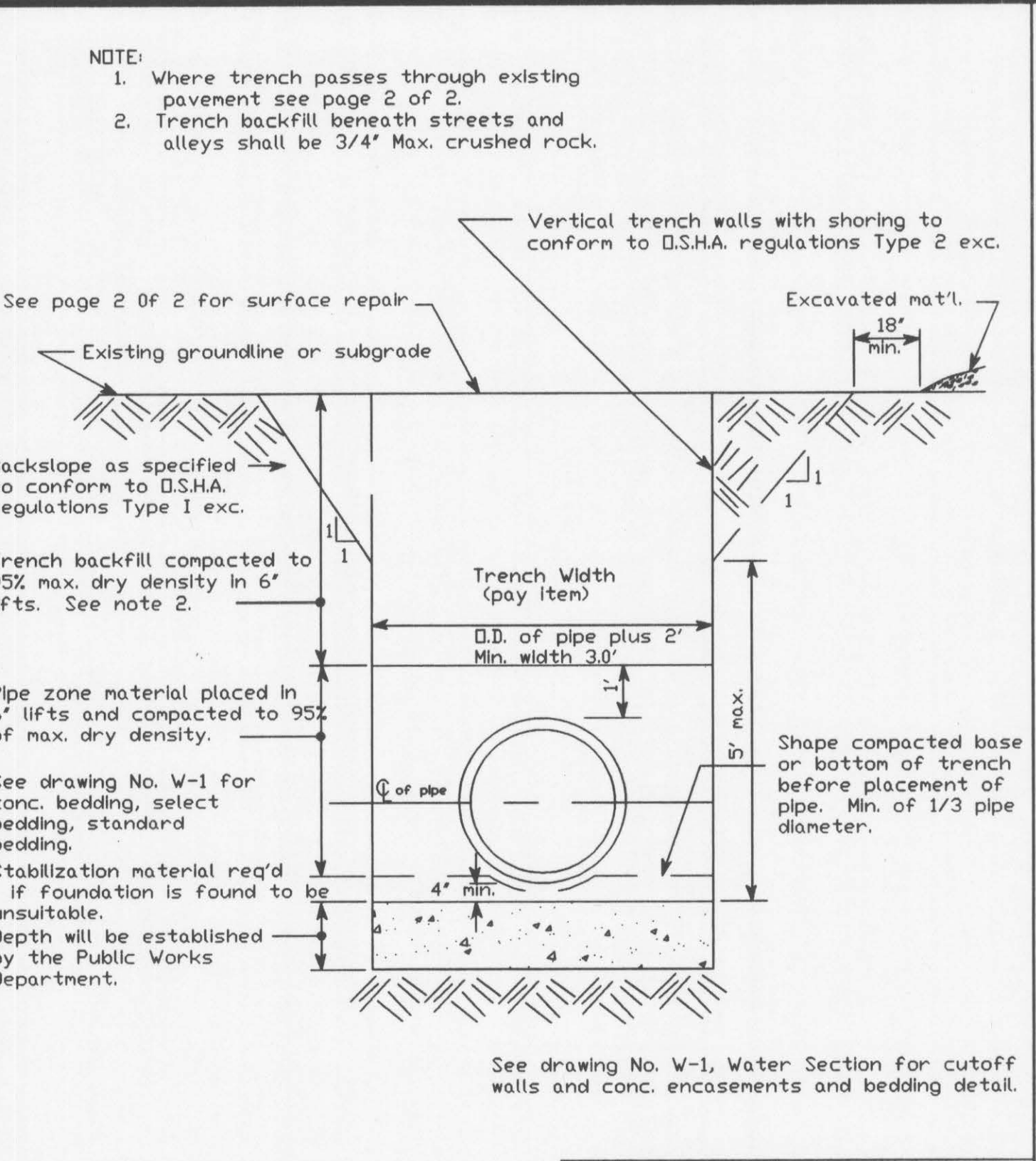


CITY OF LEWISTON STANDARD DRAWING
MANHOLE DETAILS

APPROVED: Michael Johnson P.E.

| REVISED | EXPLANATION | DATE |
|----------|--------------------|------|
| 10-6-83 | Dimensions | |
| 08-19-93 | ACAB/TYPICAL B MOD | |

ST-3

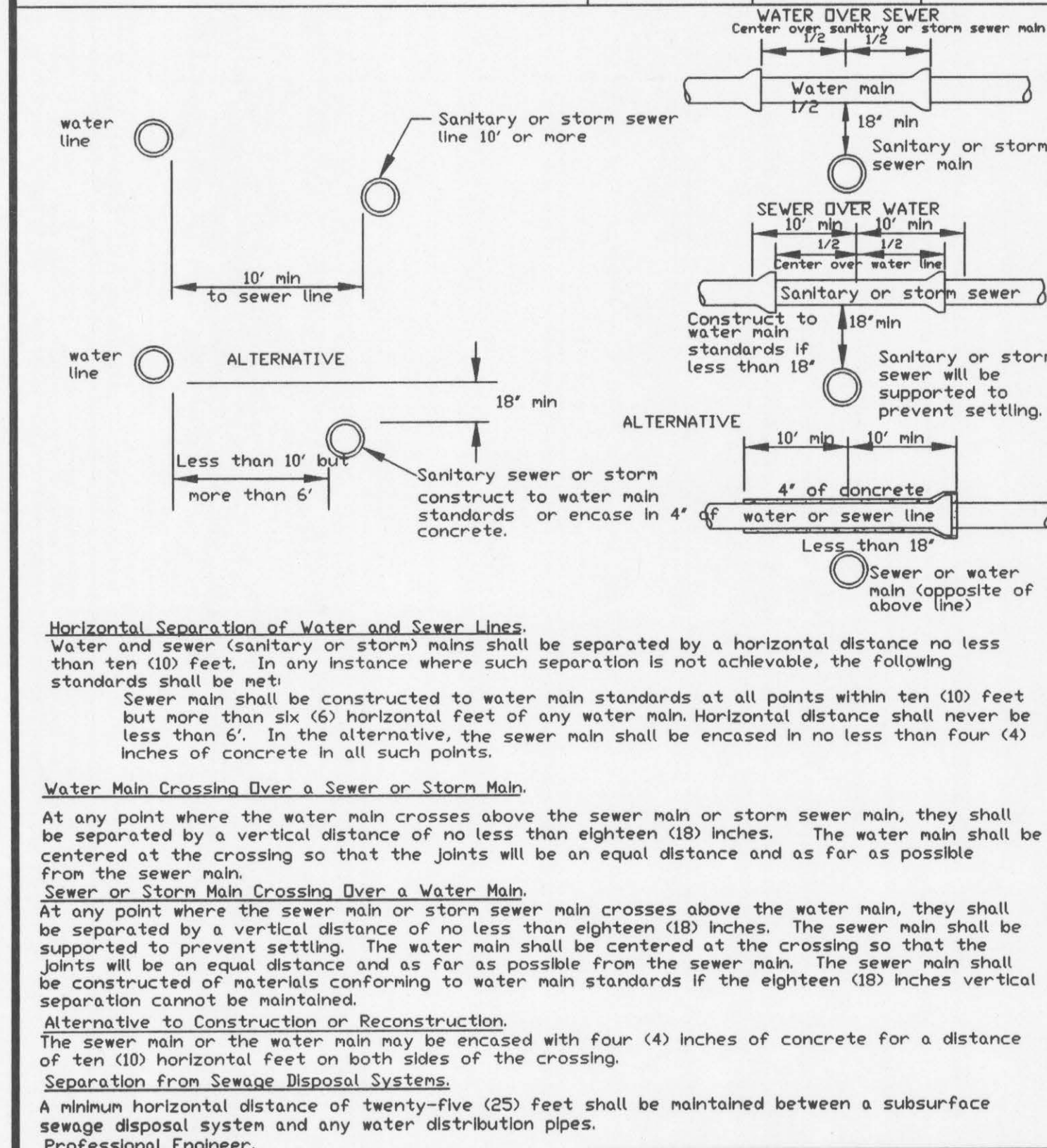


CITY OF LEWISTON STANDARD DRAWING
TRENCH EXCAVATION & BACKFILL DETAIL
 PG. 1 OF 2

APPROVED: Michael Johnson P.E.

| REVISED | EXPLANATION | DATE |
|---------|-------------------|------|
| 3-9-92 | NOTE & ARROW/ACAB | |

ST-9A

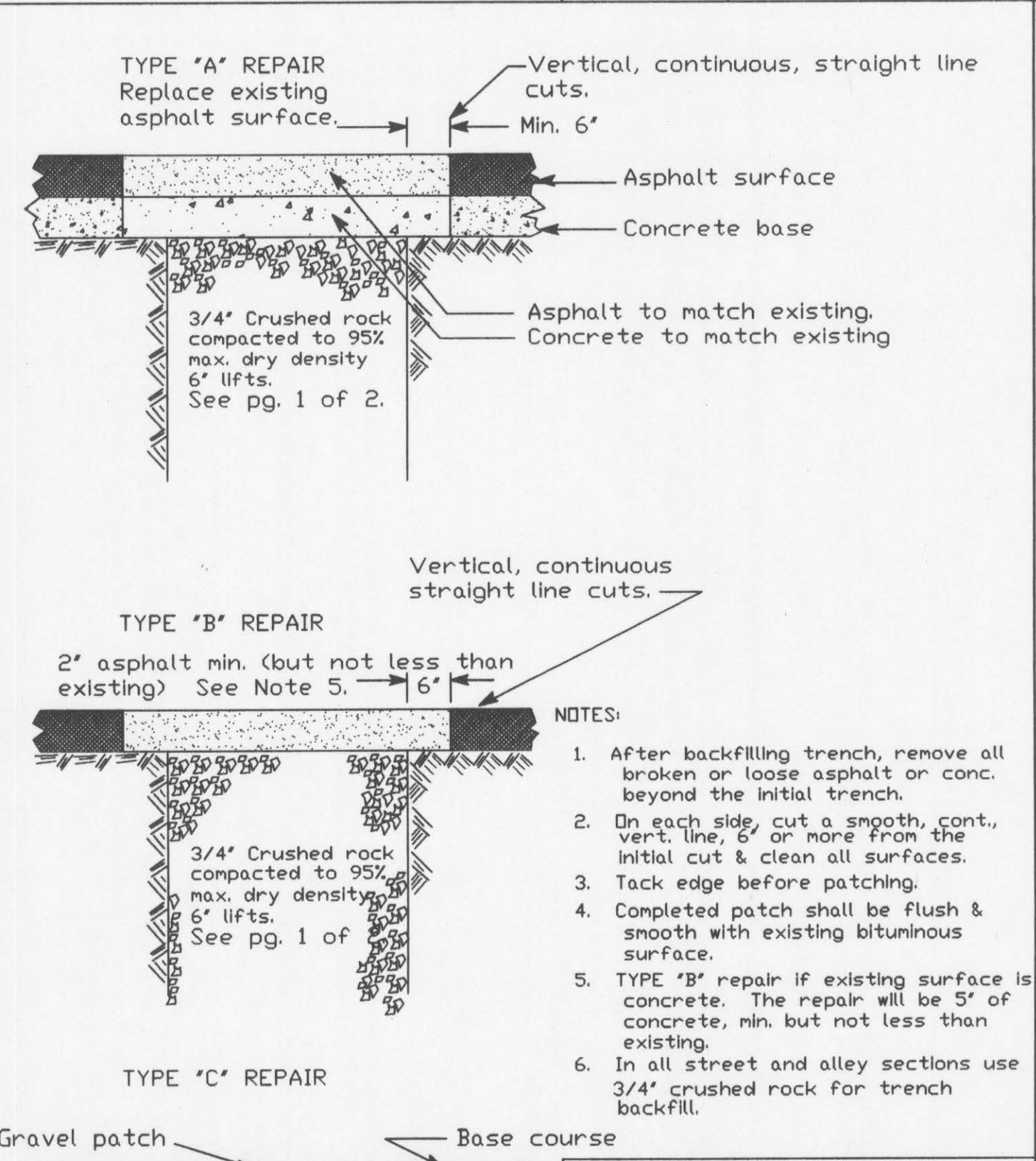


CITY OF LEWISTON STANDARD DRAWING
WATER, SEWER & STORM SEWER SEPARATION STANDARDS

APPROVED: Michael Johnson P.E.

| REVISED | EXPLANATION | DATE |
|---------|-----------------|------|
| 10-6-83 | ADD NOTE 5 | |
| 3-9-92 | ADD NOTE 5/ACAB | |

ST-9B

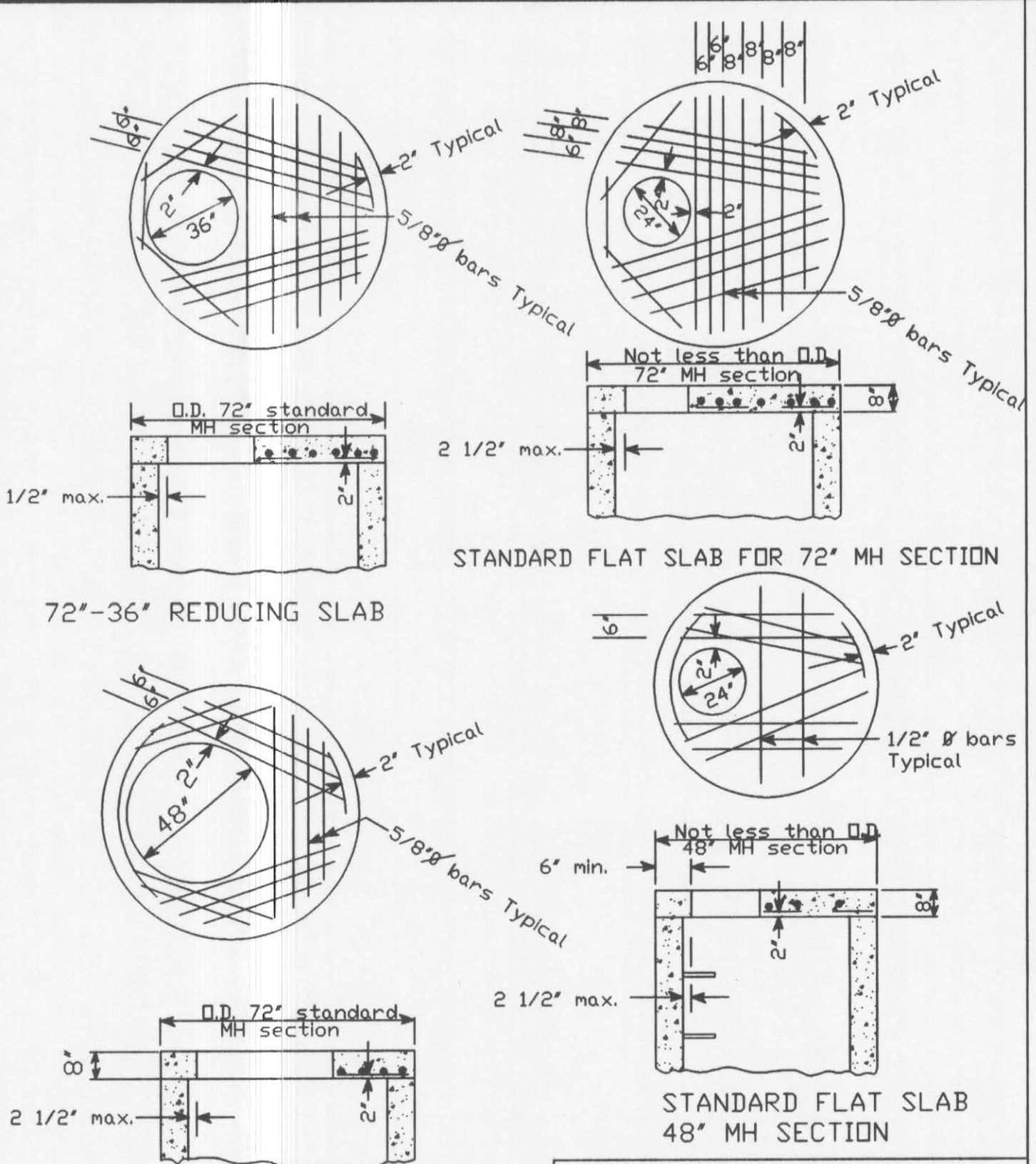


CITY OF LEWISTON STANDARD DRAWING
TRENCH EXCAVATION DETAIL
 SURFACE REPAIR
 PG. 2 OF 2

APPROVED: Michael Johnson P.E.

| REVISED | EXPLANATION | DATE |
|---------|-----------------|------|
| 10-6-83 | ADD NOTE 5 | |
| 3-9-92 | ADD NOTE 5/ACAB | |

ST-9B

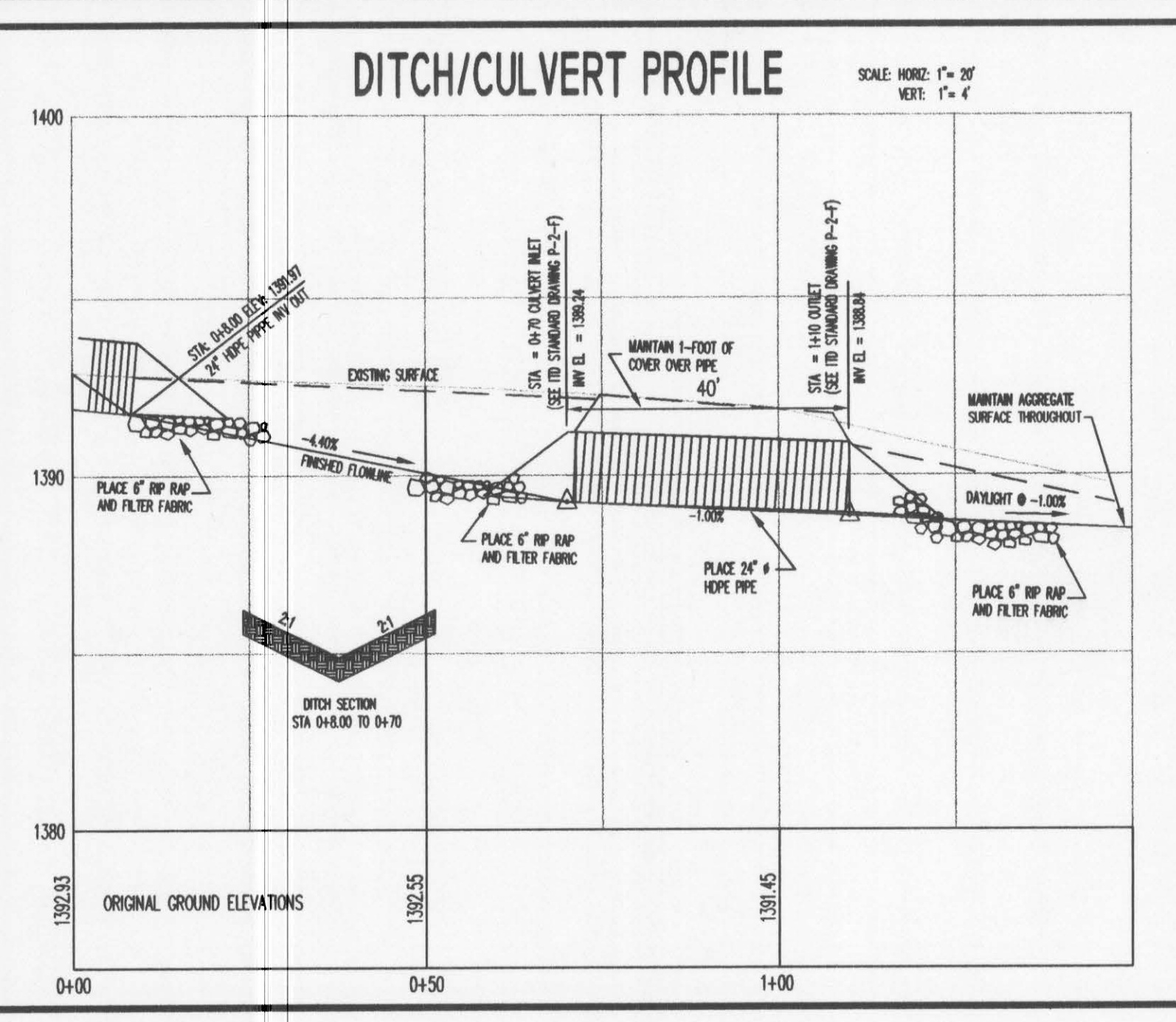


CITY OF LEWISTON STANDARD DRAWING
MANHOLE SLAB DETAIL

APPROVED: Michael Johnson P.E.

| REVISED | EXPLANATION | DATE |
|----------|--------------------------------|------|
| 12-26-84 | Add rebar/arrows, typical note | |
| 09-04-92 | ACAB | |

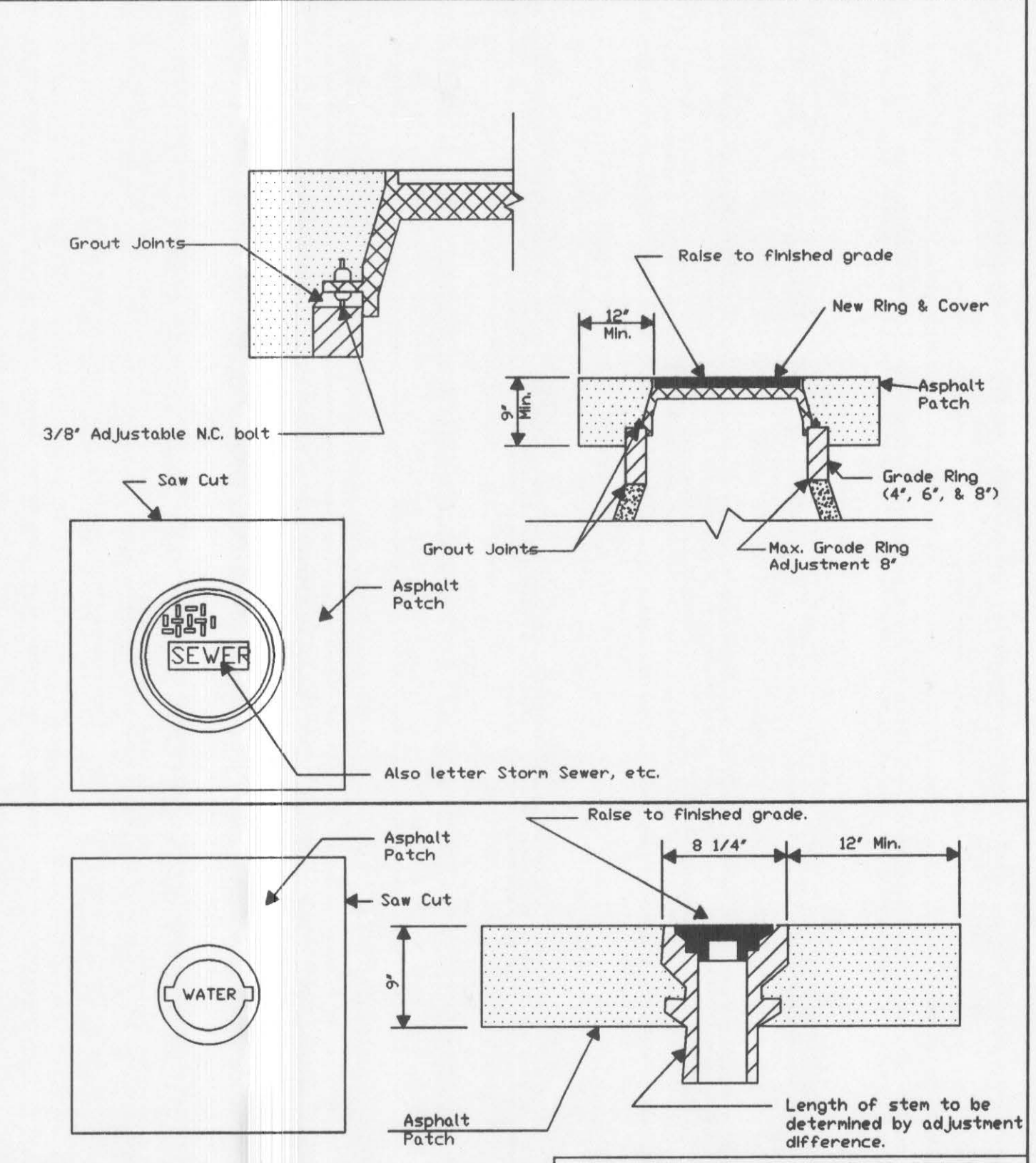
ST-7



CATCH BASIN DETAILS (SD-1)

1. FOR ITD TYPE 3A CATCH BASIN DETAIL REFER TO ITD STANDARD DRAWING E-6-B.

2. FOR ITD TYPE 3 CATCH BASIN DETAIL REFER TO ITD STANDARD DRAWING E-6-A.

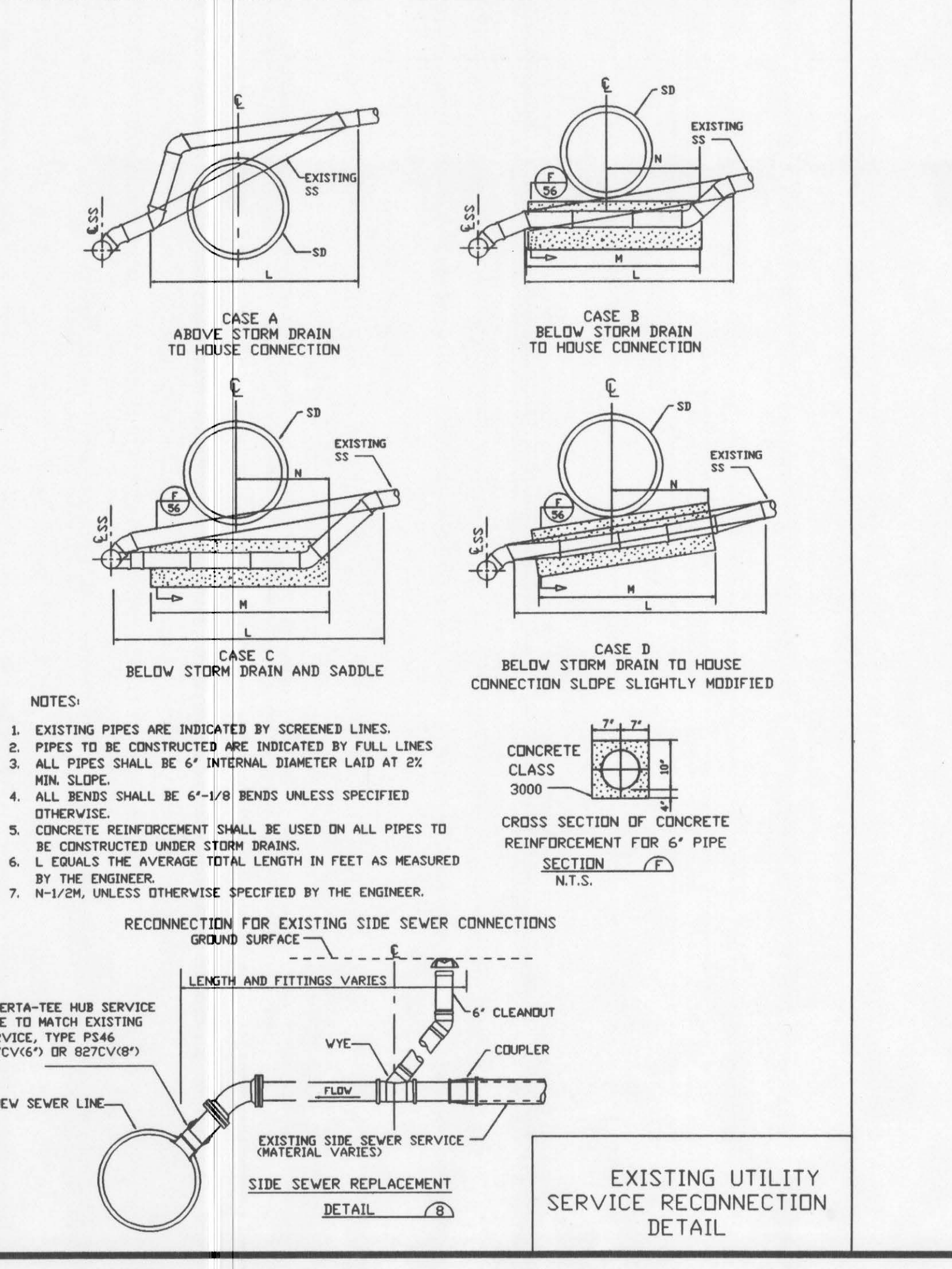


CITY OF LEWISTON STANDARD DRAWING
ADJUST UTILITIES

APPROVED: Michael Johnson P.E.

| REVISED | EXPLANATION | DATE |
|----------|--------------------|------|
| 10-6-83 | ADD DIMENSIONS | |
| 07-27-91 | ASPHALT PATCH/ACAB | |

ST-10



LINDEN AVENUE STANDARD DETAILS

DESIGNED BY: M.H. SCALE: NONE
 DRAWN BY: M.H. DATE: 5/15/2000
 CHECKED BY: T.R. T.R. DRAWING NO.: L5B
 NO. DATE FILENAME DESCRIPTION
 BY: 8-5 SHEET 6 OF 6

CITY OF LEWISTON
 ENGINEERING DEPARTMENT
 1804 'F' STREET, LEWISTON ID 83501
 208-746-1918