



THE LOCATION OF EXISTING UTILITIES ON THESE PLANS ARE APPROXIMATE AND ARE SHOWN FOR INFORMATION ONLY. THE CONTRACTOR SHALL PERFORM A SEPARATE INVESTIGATION IN THE FIELD TO DETERMINE THE EXACT LOCATION OF ALL EXISTING UNDERGROUND UTILITIES. INFORMATION REGARDING THE LOCATION OF EXISTING UNDERGROUND UTILITIES CAN BE OBTAINED FROM CALLING DIG LINE AT 811.

AGENCY TELEPHONE NUMBERS

CITY OF LEWISTON PUBLIC WORKS DEPARTMENT 746-1316  
AVISTA UTILITIES 798-1473  
CABLEONE 746-3325  
QWEST COMMUNICATIONS 798-0607  
DIGLINE UNDERGROUND UTILITY LOCATE 811

GENERAL NOTES:

- 1) ALL WORKMANSHIP AND MATERIALS SHALL BE IN ACCORDANCE WITH ALL STATE AND LOCAL CODES, AND THE 2008 IDAHO STANDARDS FOR PUBLIC WORKS CONSTRUCTION (ISPMC) AS SPECIFICALLY AMENDED BY THE CITY OF LEWISTON STANDARD DRAWINGS REFERENCED IN THIS DRAWING.
- 2) THE KNOWN EXISTING UNDERGROUND UTILITY LINES ARE SHOWN ON THE DRAWINGS FOR GENERAL INFORMATION ONLY AND THE LOCATIONS ARE APPROXIMATE. UNDERGROUND UTILITIES SHALL BE VERIFIED BY NOTIFYING THE ONE CALL (811) TWO (2) WORKING DAYS IN ADVANCE OF PERFORMING EXCAVATION WORK. PROTECT UTILITY MARKINGS DURING CONSTRUCTION. DETERMINE BY HAND DIGGING, IN THE AREA (24 INCHES) OR LESS FROM THE FACILITIES, THE PRECISE ACTUAL LOCATIONS OF UNDERGROUND FACILITIES THAT HAVE BEEN MARKED. COMPLY WITH SECTION 55-2201 OF IDAHO CODE ENTITLED "UNDERGROUND FACILITIES DAMAGE PREVENTION".
- 3) UNDERGROUND UTILITIES SHALL BE UNCOVERED WHERE CROSSINGS, INTERFERENCES, OR CONNECTIONS OCCUR PRIOR TO TRENCHING OR EXCAVATING FOR ANY NEW PIPES OR STRUCTURES TO DETERMINE ACTUAL LOCATIONS AND SHALL MAKE THE APPROPRIATE PROVISIONS TO PROTECT SAID FACILITIES FROM DAMAGE. IF STRUCTURES OR UTILITIES ARE ENCOUNTERED THAT MAY PREVENT THE CONSTRUCTION OF THE FACILITIES, NOTIFY THE ENGINEER BEFORE CONTINUING WITH THE CONSTRUCTION.
- 4) PROVIDE DUST CONTROL 7 DAYS PER WEEK, 24 HOURS PER DAY.
- 5) PROVIDE INLET PROTECTION FOR EXISTING AND PROPOSED STORM WATER STRUCTURES THROUGHOUT CONSTRUCTION.
- 6) TRAFFIC CONTROL SHALL BE IN ACCORDANCE WITH THE MANUAL OF UNIFORM TRAFFIC CONTROL DEVICES, CURRENT EDITION. PRIOR TO DISRUPTION OF ANY TRAFFIC, TRAFFIC CONTROL PLANS SHALL BE PREPARED AND SUBMITTED TO THE ENGINEER FOR APPROVAL. NO WORK SHALL COMMENCE UNTIL ALL APPROVED TRAFFIC CONTROL IS IN PLACE.

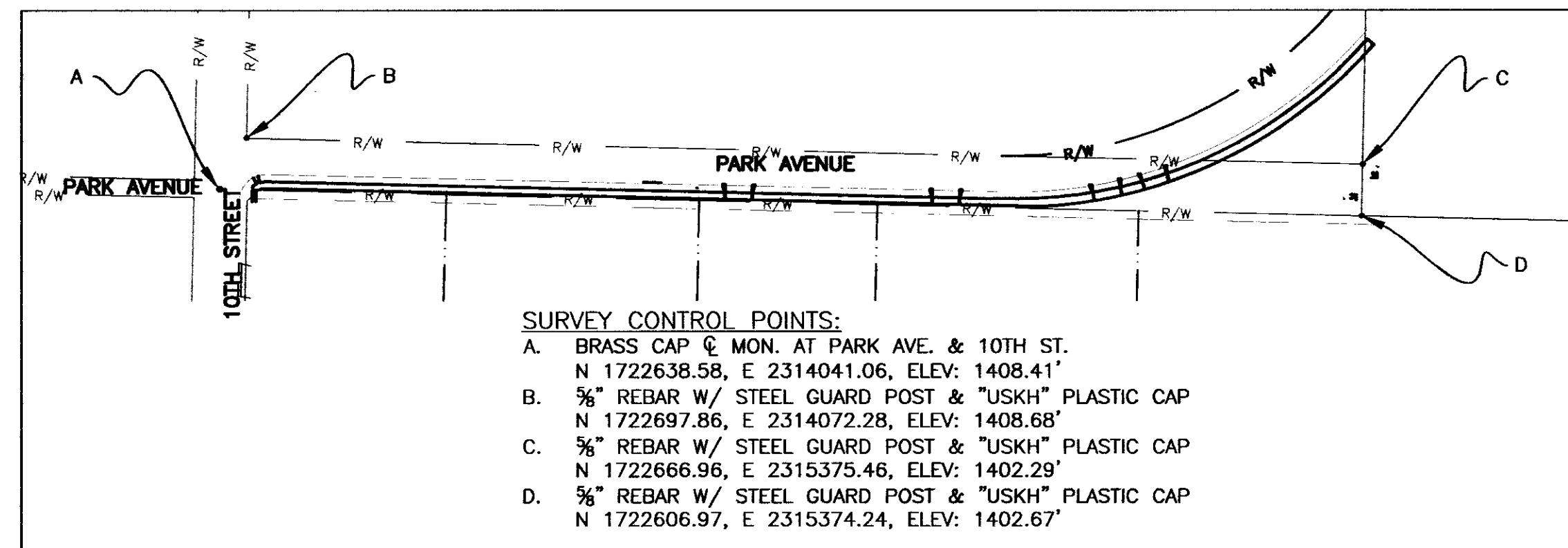
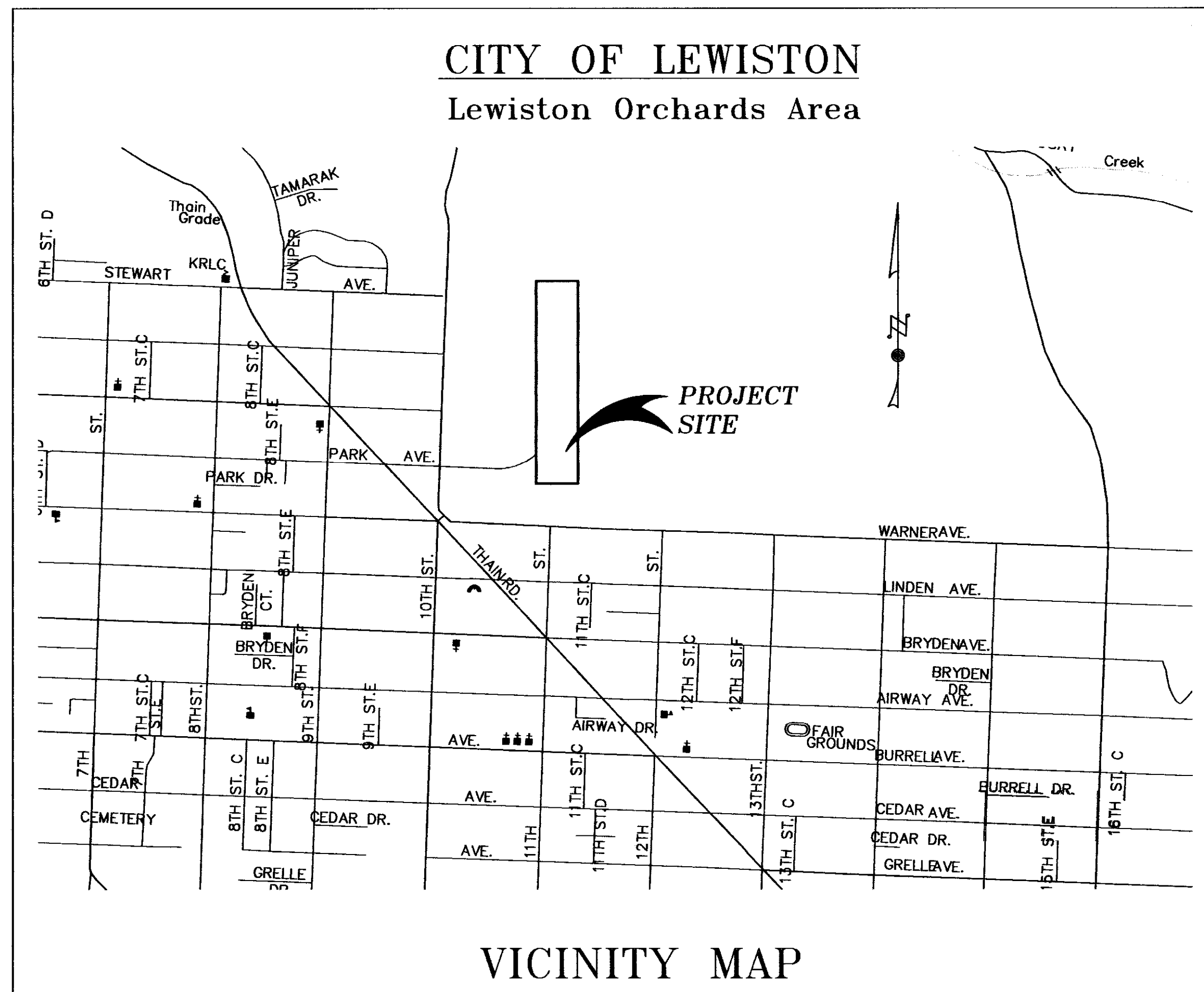
WATER NOTES:

- 1) ALL TRENCHES AND EXCAVATED AREAS SHALL BE BACKFILLED WITH GRANULAR MATERIAL IN ACCORDANCE WITH ISPMC SECTION 305.
- 2) ALL WATER MAINS SHALL BE CLASS 350 DUCTILE IRON.
- 3) ALL WATER MAINS SHALL BE INSTALLED WITH SEPARATION BETWEEN WATER AND SANITARY OR STORM SEWER PER IDAPA 58.01.08.542.07 & 58.01.16.430.0.
- 4) THRUST BLOCKS AND/OR RESTRAINED JOINS AS SPECIFIED BY THE ENGINEER SHALL BE INSTALLED AT ALL FITTING LOCATIONS SPECIFIED BY ISPMC STANDARD DRAWING SD-403. THRUST BLOCKS SHALL BE CONSTRUCTED TO SIZES BASED ON ALLOWABLE SOIL BEARING STRESS OF 2000 PSF.
- 5) PROVIDE PRESSURE AND LEAKAGE TESTS ON ALL NEWLY LAID PIPE AND VALVED SECTIONS OF IT. PRESSURE TEST PROCEDURES SHALL CONFORM TO AWWA C600 AS HEREINAFTER MODIFIED. CONDUCT TESTS AFTER THE TRENCH HAS BEEN PARTIALLY BACK-FILLED WITH THE JOINTS LEFT EXPOSED FOR INSPECTION, OR WHEN COMPLETELY BACK-FILLED, AS PERMITTED BY THE ENGINEER. WHERE ANY SECTION OF PIPE IS PROVIDED WITH CONCRETE THRUST BLOCKING, DO NOT CONDUCT PRESSURE TEST UNTIL AT LEAST 2 DAYS HAVE ELAPSED AFTER THE CONCRETE THRUST BLOCKING WAS INSTALLED. IF HIGH-EARLY CEMENT IS USED FOR THE CONCRETE THRUST BLOCKING, THE TIME MAY BE REDUCED TO 1 DAY. AFTER THE PIPE HAS BEEN BACK-FILLED OR PARTIALLY BACK-FILLED, AS HEREIN SPECIFIED, FILL THE PIPE WITH WATER, EXPELLING AIR DURING FILLING, AND PERMIT IT TO STAND FOR A 24-HOUR PERIOD TO ALLOW NATURAL ABSORPTION TO TAKE PLACE. THE PRESSURE TO BE USED IN THE TEST SHALL BE THE GREATER OF 1.5 TIMES THE WORKING PRESSURE OR 150 PSI. BEFORE DISINFECTING, FLUSH ALL FOREIGN MATTER FROM THE PIPELINE. PROVIDE HOSES, PUMPS, TEMPORARY PIPES, DITCHES, ETC., AS REQUIRED TO DISPOSE OF FLUSHING WATER WITHOUT DAMAGE TO ADJACENT PROPERTIES. FLUSHING VELOCITIES SHALL BE AT LEAST 2.5 FPS.
- 6) POTABLE WATER MAINS SHALL BE DISINFECTED AND TESTED BEFORE PLACING IN SERVICE. DISINFECTION PROCEDURES SHALL CONFORM TO AWWA C651 AS HEREINAFTER MODIFIED. TREATED WATER SHALL BE RETAINED IN THE PIPELINE LONG ENOUGH TO DESTROY ALL NONSPORE-FORMING BACTERIA, OR AS DIRECTED BY THE ENGINEER. OPERATE ALL NEW VALVES, HYDRANTS AND OTHER APPURTENANCES DURING DISINFECTION TO ASSURE THAT THE DISINFECTING MIXTURE IS DISPERSED INTO ALL PARTS OF THE LINE, INCLUDING DEAD ENDS, NEW SERVICES AND SIMILAR AREAS THAT OTHERWISE MAY NOT RECEIVE THE TREATED WATER. AFTER THE APPLICABLE RETENTION PERIOD, HEAVILY CHLORINATED WATER WILL BE FLUSHED FROM THE NEW WATER MAIN. AFTER FINAL FLUSHING AND BEFORE THE NEW MAIN IS CONNECTED TO THE DISTRIBUTION SYSTEM, TWO CONSECUTIVE SETS OF ACCEPTABLE SAMPLES, TAKEN AT LEAST 24 HOURS APART, SHALL BE COLLECTED FROM THE NEW MAIN. A COMBINATION BLOWOFF AND SAMPLING TAP IS RECOMMENDED, BUT SAMPLES MAY BE TAKEN AT TAPPED SADDLE LOCATIONS PROVIDED THAT THE SADDLE IS USED FOR A SERVICE CONNECTION AT THE COMPLETION OF THE PROJECT. NO HOSE OR FIRE HYDRANT MAY BE USED IN THE COLLECTION OF SAMPLES. ALL SAMPLES SHALL BE TESTED FOR BACTERIOLOGICAL QUALITY IN ACCORDANCE WITH STANDARD METHODS FOR THE EXAMINATION OF WATER AND WASTEWATER, AND SHALL SHOW THE ABSENCE OF COLIFORM ORGANISMS. EACH TEST REQUIRES A MINIMUM 24 HOUR PERIOD FOR RESULTS.

CONSTRUCTION DRAWINGS

11th Street Water Extension - Joint Use Site

SW 1/4, SECTION 9, T.35N., R.5W., B.M.  
CITY OF LEWISTON, NEZ PERCE COUNTY, IDAHO



LEGEND		
EXISTING		PROPOSED
	MONUMENT	
	SURVEY CONTROL	
	TREE	
	SIGN	
	MAILBOX	
	UTILITY CHAMBER	
	CATCH BASIN	
	SANITARY SEWER MH	
	STORM MANHOLE	
	WATER VALVE	
	WATER METER	
	FIRE HYDRANT	
	UTILITY POLE & GUY	
	RIGHT OF WAY	
	RIGHT OF WAY	
	EASEMENT	
	ROAD BASE CENTERLINE	
	OVERHEAD ELECTRIC	
	OVERHEAD ELECTRIC	
	TELEPHONE CENTERLINE	
	CABLE TV	
	SANITARY SEWER	
	SANITARY SEWER	
	STORM SEWER	
	STORM SEWER	
	DITCH LINE	
	STORM DRAIN	
	FENCE	
	CONCRETE CURB	
	EDGE OF GRAVEL	
	EDGE OF PAVEMENT	
	SAW CUT	
	CONTOURS	
	ASPHALT PAVEMENT	
	CONCRETE	
DETAIL OR SECTION DESIGNATION SHEET NUMBER ON WHICH DETAIL APPEARS		

TABLE OF CONTENTS

COVER SHEET	1
DETAILS & WATER MAIN PLAN & PROFILE	2
WATER MAIN PLAN AND PROFILE	3-4

DESIGNED BY: AMB  
DRAWN BY: AMB  
CHECKED BY: SM  
COMMUNITY\_PARK\_ROAD  
JOB NO.

SCALE: N/A  
DATE: 08/19/2010  
DRAWING: CP\_ROAD  
SHEET 1 OF 4

REVISIONS

NO.	DATE	FILENAME	DESCRIPTION

11th STREET WATER EXTENSION  
- JOINT USE SITE

COVER SHEET

CITY OF LEWISTON  
PUBLIC WORKS DEPARTMENT  
ENGINEERING SERVICES  
184 F STREET, LEWISTON ID 83501  
208-746-516  
FAX 208-746-9957