

SCALE: NTS

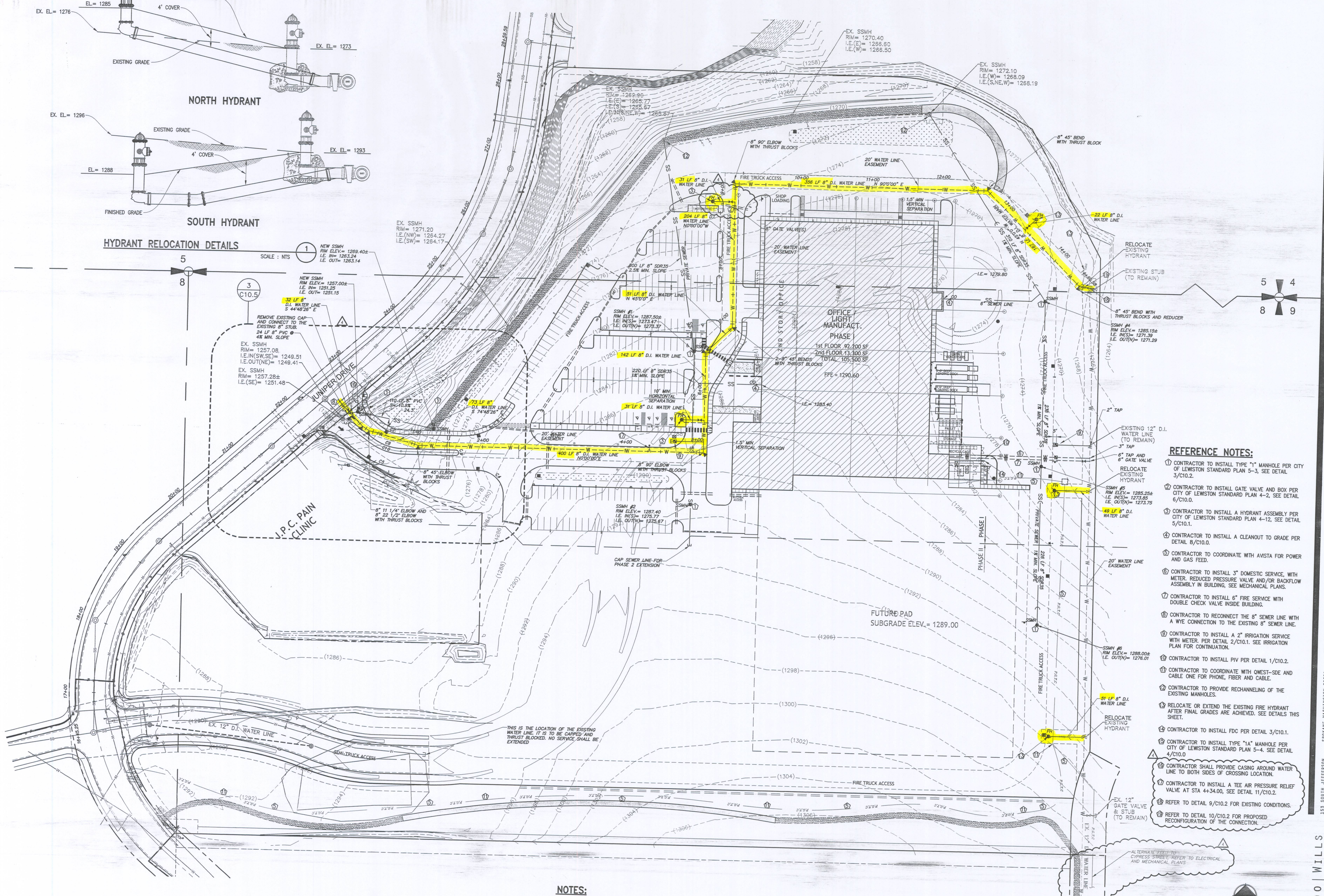
1 NEW SSMH
RIM ELEV = 1269.40±
I.E. (W) = 1263.24
I.E. (SW) = 1263.14

3 C10.5
NEW SSMH
RIM ELEV = 1257.00±
I.E. (W) = 1251.25
I.E. (SW) = 1251.15

REMOVE EXISTING CAP
AND CONNECT TO THE
EXISTING 8" STUB.
24 LF 8" PVC
4% MIN. SLOPE

EX. SSMH
RIM = 1257.08
I.E. (W) = 1249.51
I.E. (SW) = 1249.41

EX. SSMH
RIM = 1257.28±
I.E. (SE) = 1251.48



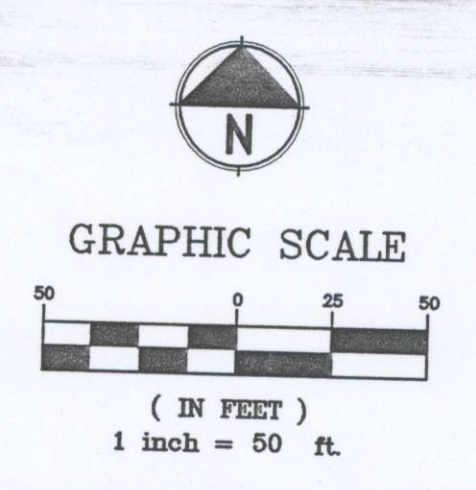
- NOTES:**
1. ALL THRUST BLOCKS SHALL BE INSTALLED PER LEWISTON CITY STANDARD PLAN 4-4. SEE DETAIL 1/CX.X
 2. SEE ELECTRICAL FOR POWER SERVICE.
 3. RIM ELEVATIONS OF UTILITY STRUCTURES SHALL BE INSTALLED SO THAT RIM MAY BE ADJUSTED ±0.5' TO MATCH FINISHED GRADE.
 4. PRIVATE UNDERGROUND FIRE SERVICE MAINS AND ALL COMPONENTS SHALL CONFORM TO NFPA 24 MINIMUM STANDARD (THESE REQUIREMENTS EXCEED ANNA STANDARD). THE PLANS SHALL BE REVIEWED AND APPROVED BY THE FIRE DEPARTMENT PRIOR TO INSTALLATION. STAMPED, APPROVED PLANS MUST BE KEPT ON SITE FOR THE FIRE INSPECTOR.

ASSUMED BASIS OF BEARING
THE BASIS OF BEARING BEING N 89°50'42" E BETWEEN THE MONUMENTS MARKING THE NE CORNER OF SEC. 8 AND THE NORTH 1/4 CORNER OF SEC. 8 AS SHOWN ON INST. #703399

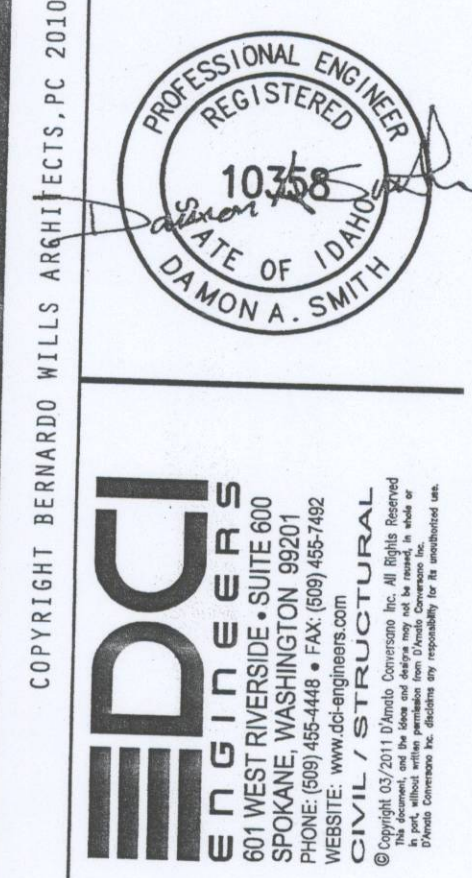
ASSUMED BASIS OF ELEVATION
ASSUMED BASIS OF ELEVATION IS A STORM WATER LID ELEVATION = 1292.46 AT THE INTERSECTION OF JUNIPER DRIVE AND JUNIPER COURT, 22.00 LF LEFT ON JUNIPER DRIVE AND 20.00 LF RIGHT ON JUNIPER COURT.

CONTRACTOR NOTE
ALL EXISTING UTILITIES SHOWN ON PLANS ARE TO BE VERIFIED HORIZONTALLY AND VERTICALLY PRIOR TO ANY CONSTRUCTION. ALL EXISTING FEATURES INCLUDING BURIED UTILITIES ARE SHOWN AS INDICATED ON RECORD MAPS AND SURVEYS FURNISHED BY OTHERS. WE ASSUME NO LIABILITY FOR THE ACCURACY OF THOSE RECORDS AND SURVEYS. CONTACT THE UTILITY OWNER/AGENCY FOR THE FINAL LOCATION OF EXISTING UTILITIES IN AREAS CRITICAL TO CONSTRUCTION.

- REFERENCE NOTES:**
1. CONTRACTOR TO INSTALL TYPE "1" MANHOLE PER CITY OF LEWISTON STANDARD PLAN 5-3. SEE DETAIL 3/C10.2.
 2. CONTRACTOR TO INSTALL GATE VALVE AND BOX PER CITY OF LEWISTON STANDARD PLAN 4-2. SEE DETAIL 6/C10.0.
 3. CONTRACTOR TO INSTALL A HYDRANT ASSEMBLY PER CITY OF LEWISTON STANDARD PLAN 4-12. SEE DETAIL 5/C10.1.
 4. CONTRACTOR TO INSTALL A CLEANOUT TO GRADE PER DETAIL 8/C10.0.
 5. CONTRACTOR TO COORDINATE WITH AMSTA FOR POWER AND GAS FEED.
 6. CONTRACTOR TO INSTALL 3" DOMESTIC SERVICE, WITH METER, REDUCED PRESSURE VALVE AND/OR BACKFLOW ASSEMBLY IN BUILDING. SEE MECHANICAL PLANS.
 7. CONTRACTOR TO INSTALL 6" FIRE SERVICE WITH DOUBLE CHECK VALVE INSIDE BUILDING.
 8. CONTRACTOR TO RECONNECT THE 8" SEWER LINE WITH A WYE CONNECTION TO THE EXISTING 8" SEWER LINE.
 9. CONTRACTOR TO INSTALL A 2" IRRIGATION SERVICE WITH METER. PER DETAIL 2/C10.1. SEE IRRIGATION PLAN FOR CONTINUATION.
 10. CONTRACTOR TO INSTALL PIV PER DETAIL 1/C10.2.
 11. CONTRACTOR TO COORDINATE WITH WEST-SIDE AND CABLE ONE FOR PHONE, FIBER AND CABLE.
 12. CONTRACTOR TO PROVIDE RECHANGELING OF THE EXISTING MANHOLES.
 13. RELOCATE OR EXTEND THE EXISTING FIRE HYDRANT THIS SHEET.
 14. CONTRACTOR TO INSTALL FDC PER DETAIL 3/C10.1.
 15. CONTRACTOR TO INSTALL TYPE "1A" MANHOLE PER CITY OF LEWISTON STANDARD PLAN 5-4. SEE DETAIL 4/C10.0.
 16. CONTRACTOR SHALL PROVIDE CASING AROUND WATER LINE TO BOTH SIDES OF CROSSING LOCATION.
 17. CONTRACTOR TO INSTALL A TEE AIR PRESSURE RELIEF VALVE AT STA 4+34.00. SEE DETAIL 11/C10.2.
 18. REFER TO DETAIL 9/C10.2 FOR EXISTING CONDITIONS.
 19. REFER TO DETAIL 10/C10.2 FOR PROPOSED RECONFIGURATION OF THE CONNECTION.



UNDERGROUND SERVICE ALERT
ONE-CALL NUMBER
(800)342-1585
CALL TWO BUSINESS DAYS BEFORE YOU DIG



Revision Date: 2-24-2011

Contractor's Grading	2-4-11
Revisions	2-18-11
DEQ Submittal	3-14-11
Reply to City Comments	3-25-11

Dated 2/24/2011

Site Development Package - Permit Set
January 21, 2011
Utility Plan

Schweitzer Engineering Laboratories
Manufacturing Facility - Phase I
2824 Juniper Drive
Lewiston, Idaho 83501

B W A BERNARDO WILLS
ARCHITECTS PC

Project No: 10-42-0041
Drawn by: JIF
Date: 1/21/2011
C9.0