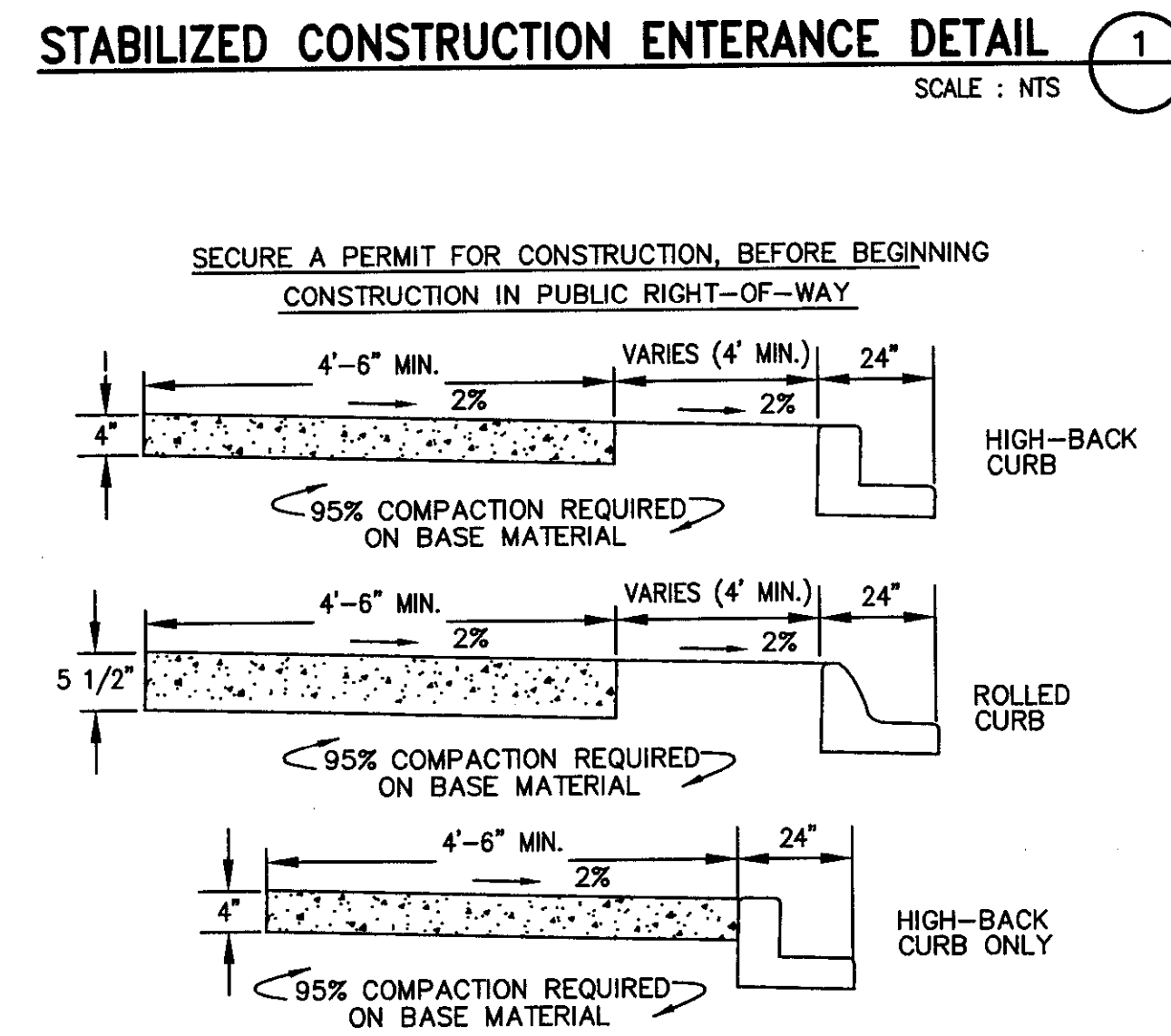
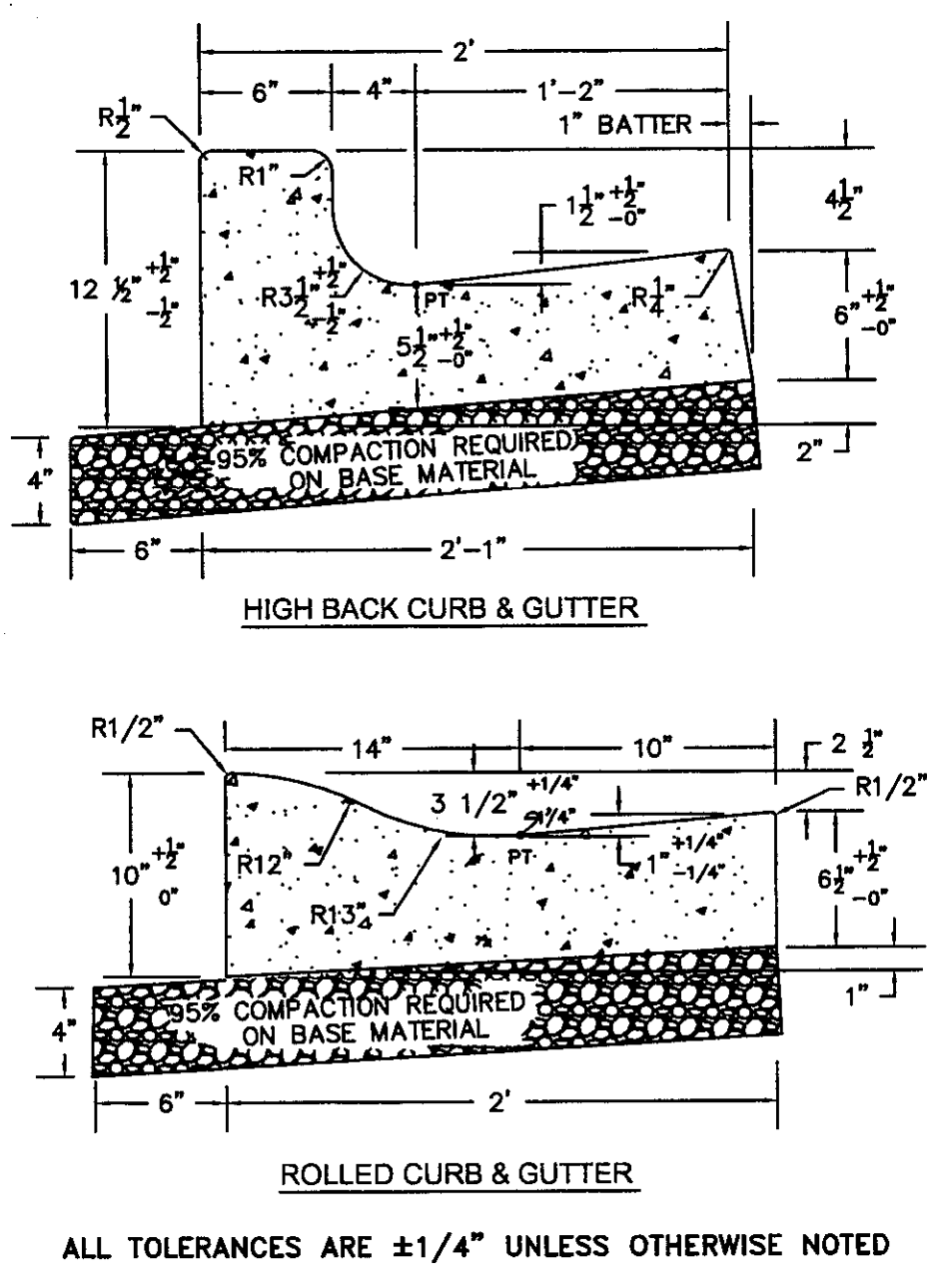
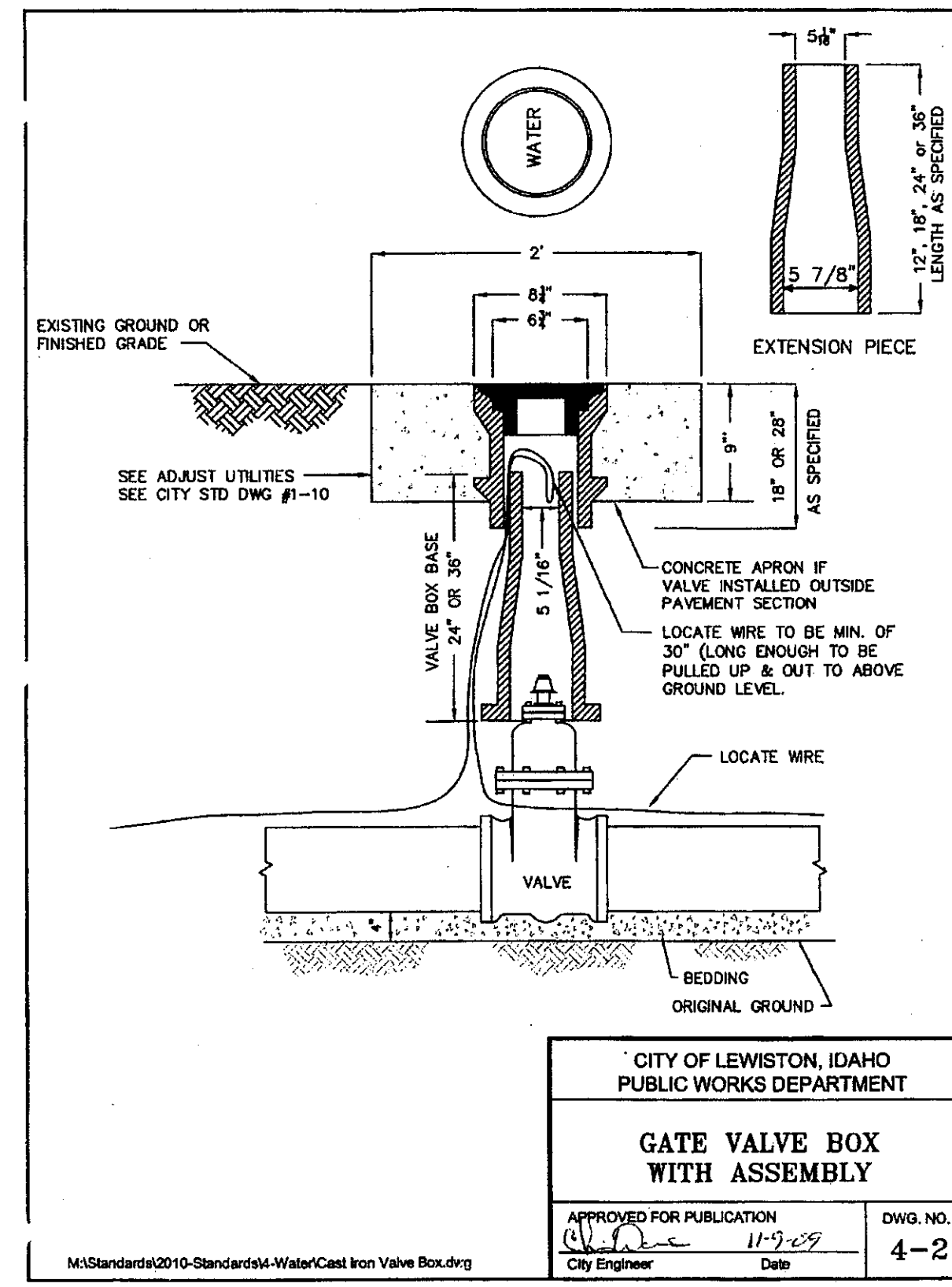


GENERAL NOTES FOR ALL TYPES OF CURB AND GUTTER

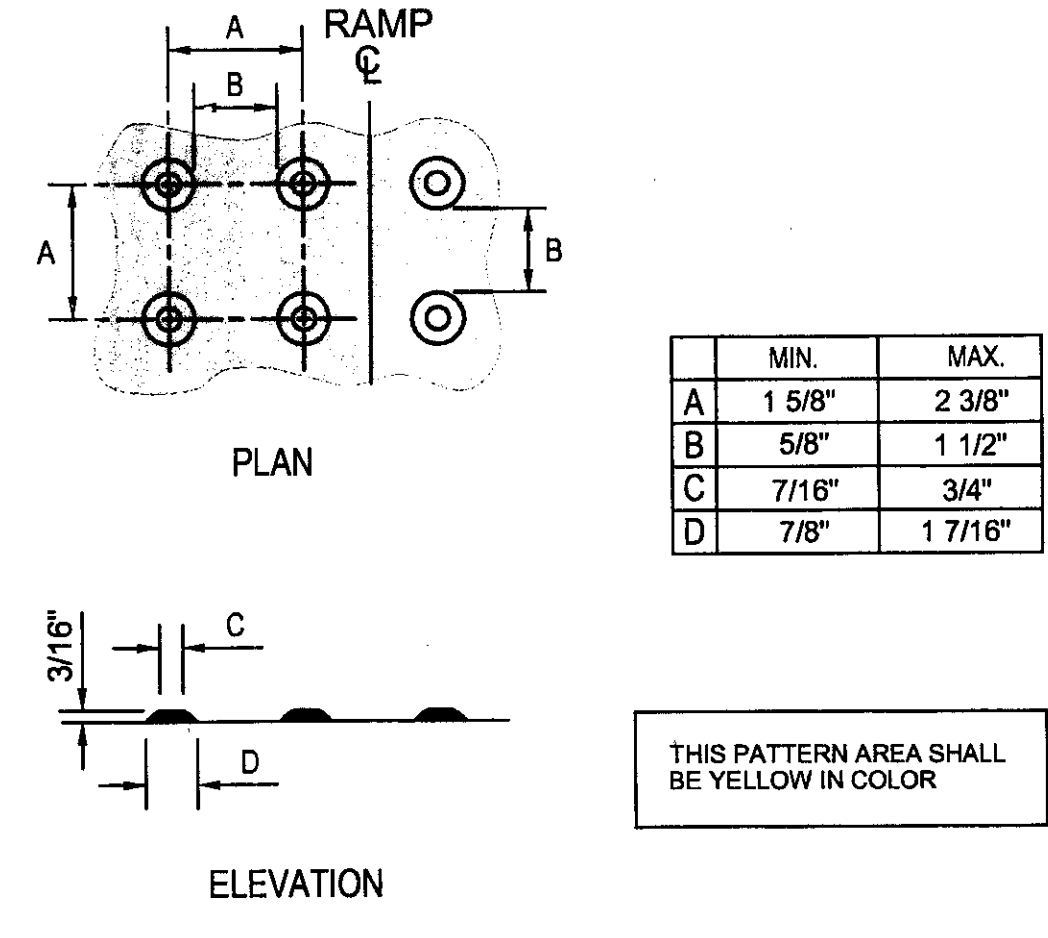
- SECURE A PERMIT FOR CONSTRUCTION, BEFORE BEGINNING CONSTRUCTION IN PUBLIC RIGHT-OF-WAY.
- GRADE, ALIGNMENT AND CURB TYPE SHALL BE AS APPROVED BY THE CITY ENGINEER.
- ALIGNMENT AND GRADE STAKE TO LIP OF GUTTER (LIP) SHALL BE ESTABLISHED OR APPROVED BY THE CITY ENGINEER.
- HORIZONTAL AND VERTICAL TOLERANCE FOR FINISHED CURB SHALL NOT TO EXCEED 0.25" PER 10' INTERVALS FROM THE LINE AND GRADE AS SHOWN ON STAMPED APPROVED PLANS.
- BASE MATERIAL SHALL BE 4" OF 3/4" INCH CRUSHED AGGREGATE BASE MATERIAL COMPACTED TO MEET OR EXCEED 95% MAXIMUM DRY DENSITY AS DETERMINED BY ASTM D-1557. ALL FILL OR BACKFILL AREAS SHALL BE PLACED IN 6" LIFTS.
- CONCRETE SHALL BE 3,500 PSI MINIMUM AT 28 DAYS, MAXIMUM WATER/CEMENT RATIO SHALL BE 0.5, 3" MAXIMUM SLUMP, 3% TO 6% ENTRAINED AIR.
- DUMMY JOINTS AT 10 FEET INTERVALS AND AT CURB RADI, 3/4" TO 1" DEEP. CONSTRUCTION JOINTS SHALL BE AS DIRECTED BY CITY ENGINEER. DIFFERENTIAL BETWEEN ADJACENT SECTIONS SHALL NOT EXCEED 1/4".
- NAME OF CONTRACTOR AND YEAR, TO BE STAMPED AT EACH END OF WORK AND AT INTERVALS OF 300 FEET.
- THE CONTRACTOR MAY BE REQUIRED BY THE PUBLIC WORKS DEPARTMENT TO MARK STUB-OUTS AND VALVES IN THE UNCURED CONCRETE.
- THE CONTRACTOR OR OWNER SHALL NOTIFY THE PUBLIC WORKS DEPARTMENT FOR INSPECTION AFTER THE FORMS ARE SET AND THE PUBLIC WORKS DEPARTMENT SHALL BE NOTIFIED NO LESS THAN 2 WORKING DAYS BEFORE PLACEMENT OF CONCRETE FOR A FINAL INSPECTION. FAILURE TO NOTIFY THE PUBLIC WORKS DEPARTMENT IS GROUNDS FOR REJECTIONS OF CURB AND GUTTER.
- CONCRETE SURFACE TO HAVE A LIGHT BROOM FINISH PARALLEL WITH THE LENGTH OF THE CURB.
- APPLY UNIFORM COAT OF REZ-SEAL OR APPROVED EQUIVALENT CURING COMPOUND TO EXPOSED CONCRETE.
- ROLLED CURB AND GUTTER SHALL NOT BE USED:
 - ON STREETS IN COMMERCIAL AND INDUSTRIAL ZONED AREAS.
 - ON STREETS WITH LONGITUDINAL (LENGTHWISE) GRADES IN EXCESS OF 6%.
 - ON ANY ARTERIAL OR COLLECTOR.
 - WITHOUT PRIOR APPROVAL OF THE CITY ENGINEER.
 - WHEN SIDEWALK IS LOCATED AT THE BACK OF CURB.



HIGH BACK AND ROLLED CURB DETAILS
SCALE: NTS



GATE VALVE BOX AND ASSEMBLY
SCALE: NTS

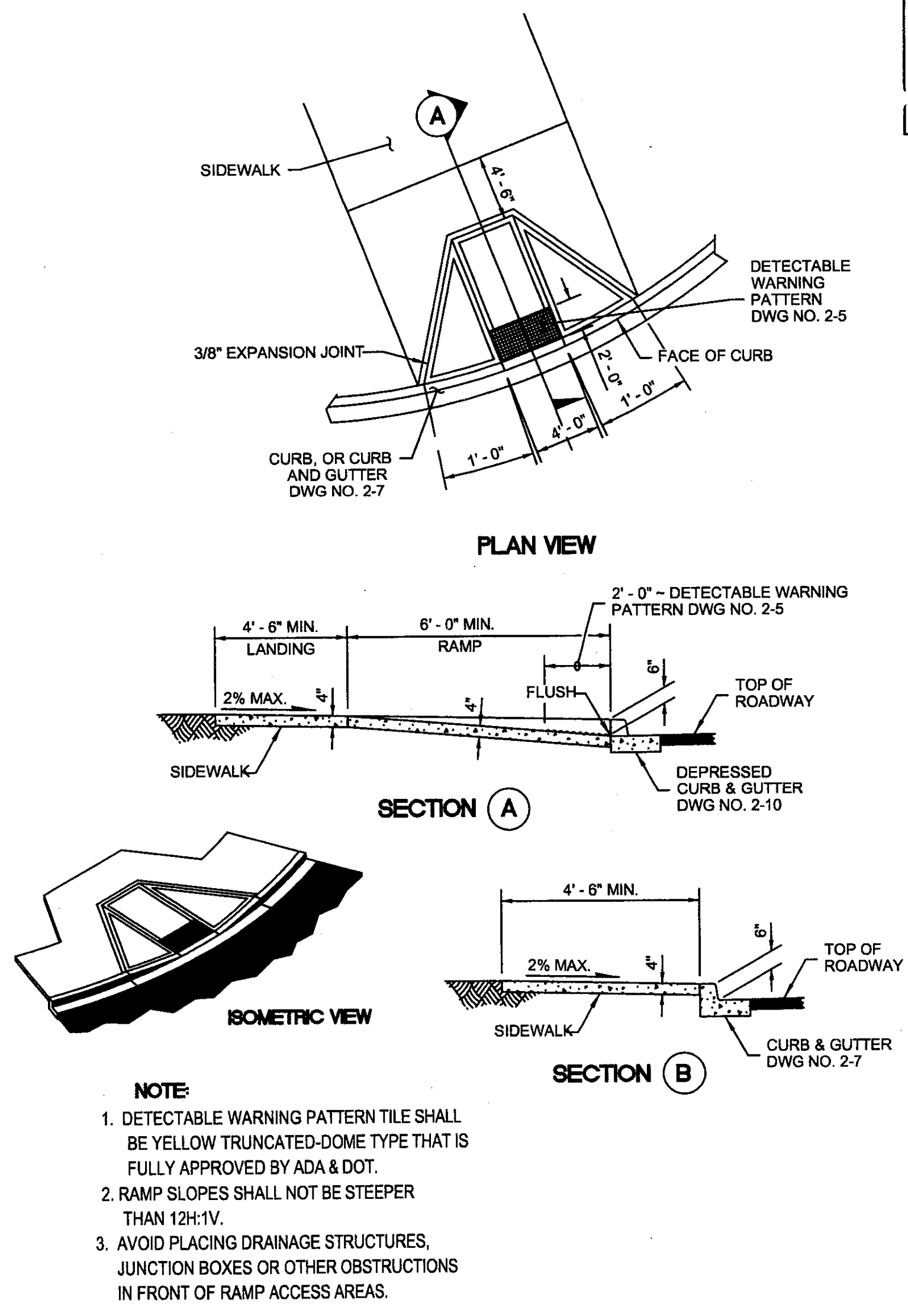


DETECTABLE WARNING DETAIL
SCALE: NTS

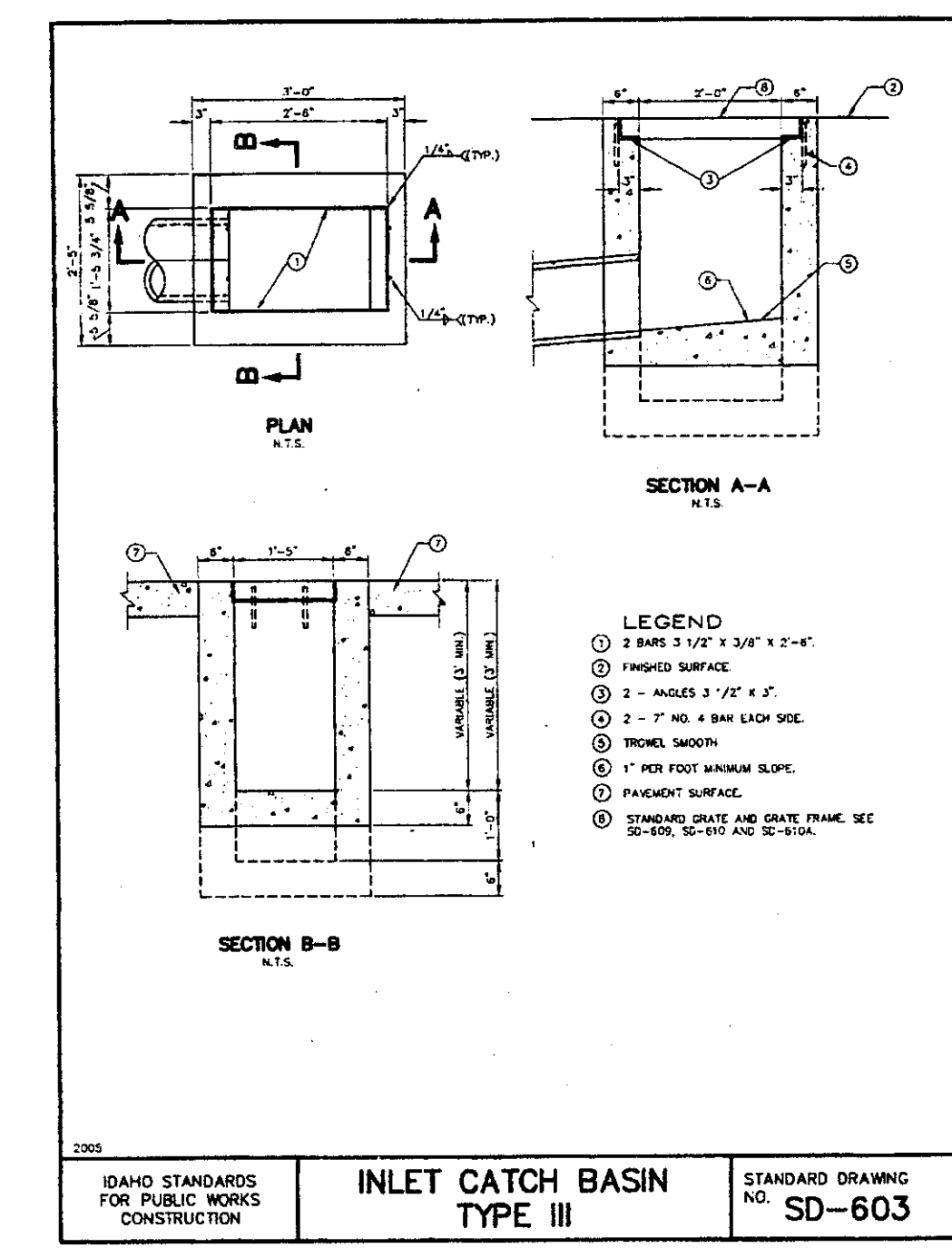
GENERAL NOTES FOR ALL SIDEWALKS

- LINE AND GRADE STAKED T.S., TOP OF SIDEWALK, B.S., BACK OF SIDEWALK.
- GRADE AND ALIGNMENT TO BE APPROVED BY THE PUBLIC WORKS DEPT.
- THE TOLERANCE FOR FINISHED SIDEWALK, HORIZONTAL AND VERTICAL VARIANCE IS NOT TO EXCEED 0.25" FROM LINE AND GRADE AS SHOWN ON PLANS.
- BASE WILL BE 4" OF 3/4" MINUS OR 5/8" MINUS CRUSHED GRAVEL COMPACTED TO 95% MAX. DRY DENSITY AND TO BE PLACED IN 6" LIFTS FOR ALL FILL OR BACKFILL AREAS.
- DUMMY JOINTS SHALL BE PLACED AT 5' INTERVALS, 3/4" TO 1" DEEP.
- CONCRETE SHALL BE 3,500 PSI MIN. AT 28 DAYS, MAXIMUM WATER/CEMENT RATIO SHALL BE 0.5, 3" MAXIMUM SLUMP, 3% TO 6% ENTRAINED AIR.
- NAME OF CONTRACTOR AND YEAR TO BE STAMPED AT EACH OF WORK AND AT INTERVALS OF 300 FT.
- THE CONTRACTOR OR OWNER SHALL NOTIFY THE PUBLIC WORKS DEPT. FOR INSPECTION OF BASE MATERIAL AFTER FORMS ARE SET AND THE PUBLIC WORKS DEPT. WILL BE NOTIFIED NO LESS THAN 2 WORKING DAYS BEFORE PLACEMENT OF CONCRETE, FOR FINAL INSPECTION.
- MUST COMPLY WITH DRIVEWAY LOCATION AND WIDTH REQUIREMENT DETAIL (NO. 2-1).
- CONCRETE SURFACE TO HAVE A LIGHT BROOM FINISH PERPENDICULAR TO THE LENGTH OF SIDEWALK.
- APPLY UNIFORM COAT OF REZ-SEAL OR APPROVED EQUIVALENT CURING COMPOUND TO EXPOSED CONCRETE.

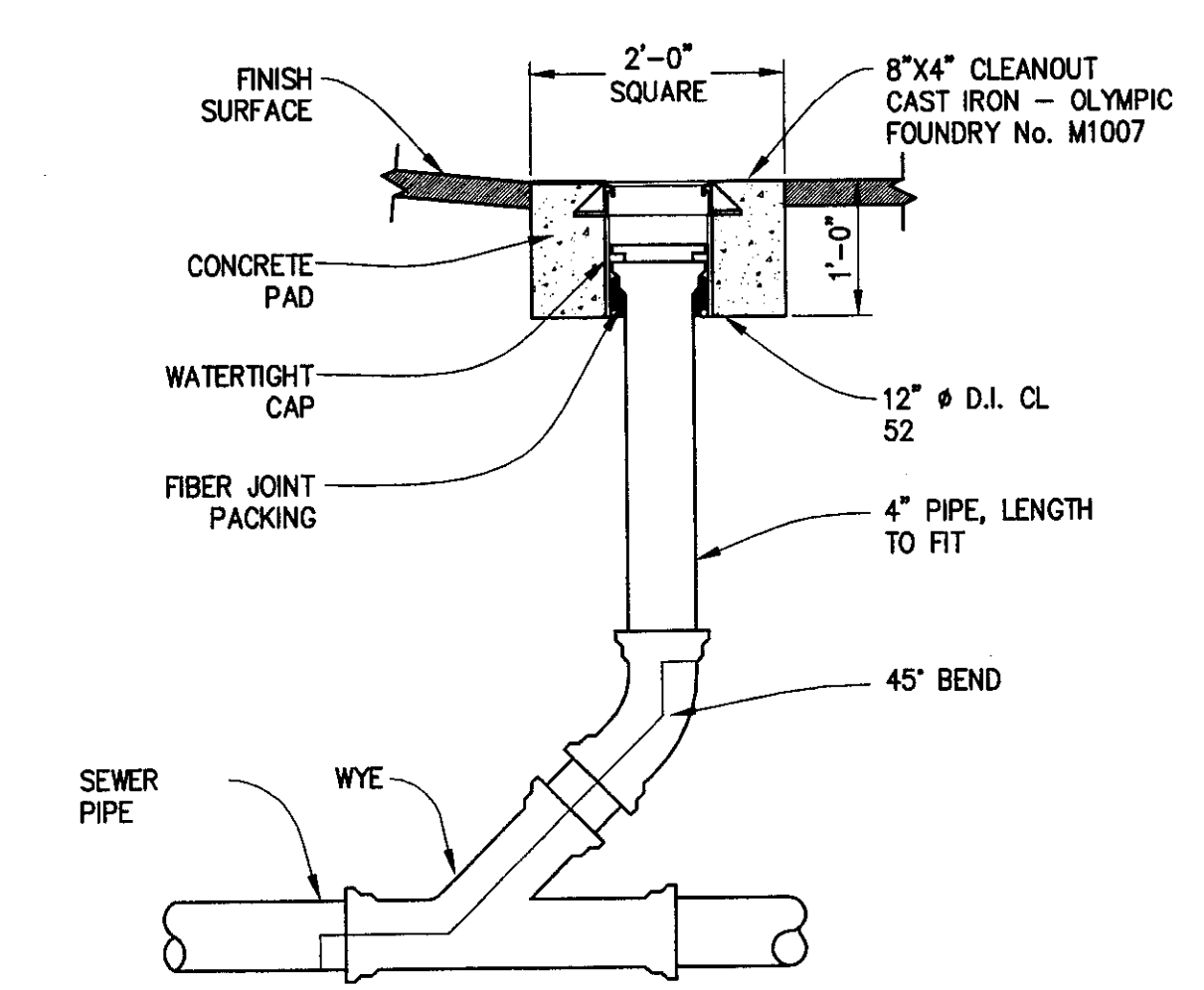
CONCRETE SIDEWALK DETAIL
SCALE: NTS



CURB RAMP DETAIL
SCALE: NTS



STORM DRAIN INLET DETAIL
SCALE: NTS



TYPICAL CLEANOUT
SCALE: NTS

CONTRACTOR NOTE

ALL EXISTING UTILITIES SHOWN ON PLANS ARE TO BE VERIFIED HORIZONTALLY AND VERTICALLY PRIOR TO ANY CONSTRUCTION. ALL EXISTING FEATURES INCLUDING BURIED UTILITIES ARE SHOWN AS INDICATED ON RECORD MAPS AND SURVEYS FURNISHED BY OTHERS. WE ASSUME NO LIABILITY FOR THE ACCURACY OF THOSE RECORDS AND SURVEYS. CONTACT THE UTILITY OWNER/AGENCY FOR THE FINAL LOCATION OF EXISTING UTILITIES IN AREAS CRITICAL TO CONSTRUCTION.

UNDERGROUND SERVICE ALERT
ONE-CALL NUMBER
(800)424-5555
CALL TWO BUSINESS DAYS BEFORE YOU DIG