

**WILLIS ENGINEERS**  
 601 WEST RIVERSIDE SUITE 800  
 BOISE, IDAHO 83725  
 PHONE (208) 333-1111 FAX (208) 333-1112  
 WWW.WILLIS-ENGINEERS.COM

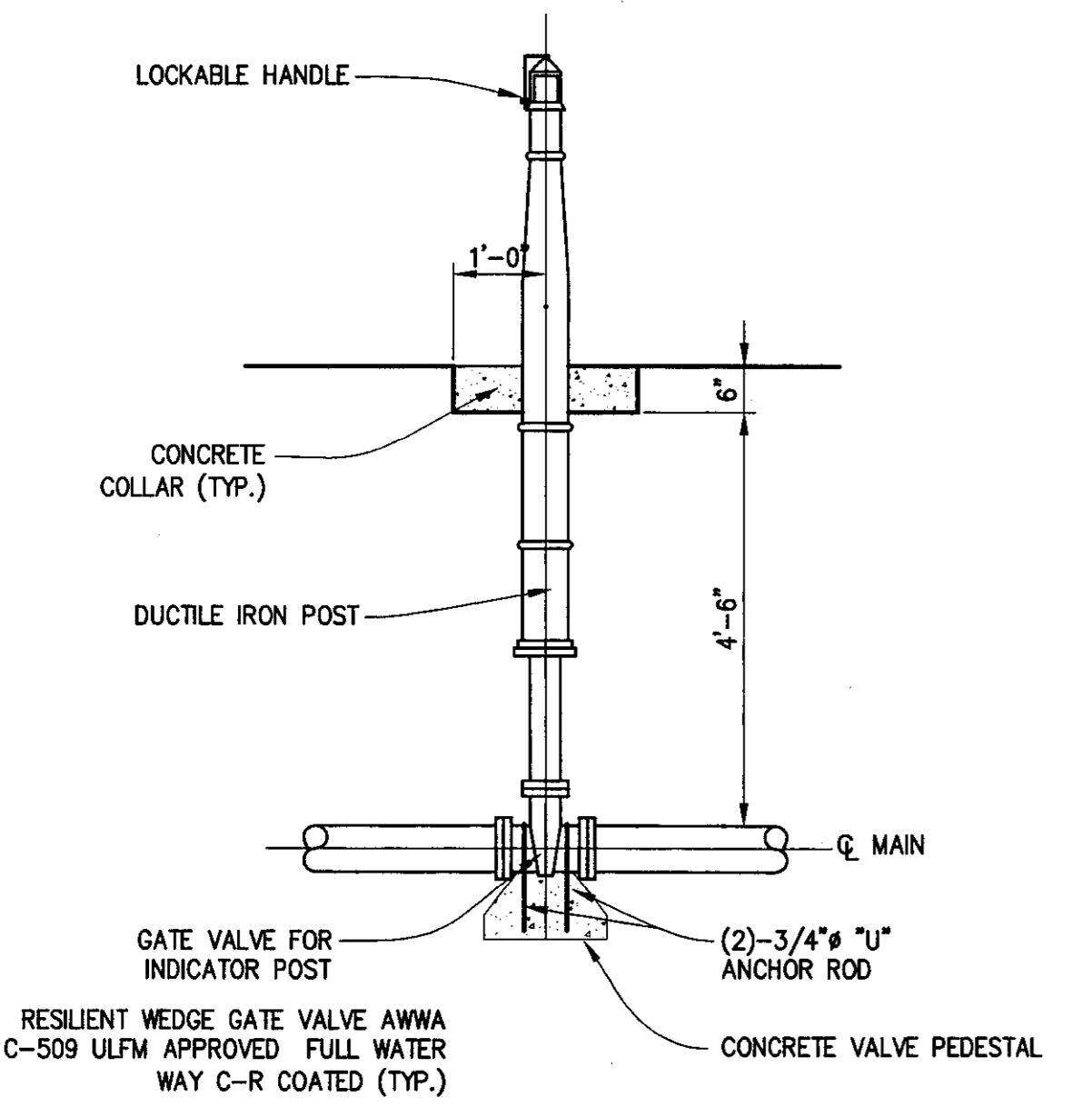
Site Development Package - Permit Set  
 January 21, 2011

Schweitzer Engineering Laboratories  
 Manufacturing Facility - Phase I

BERNARDO WILLS ARCHITECTS PC  
 151 SOUTH JEFFERSON SPOKANE WASHINGTON 99201 509.838.4511 FAX 509.838.4605  
 2821 Juniper Drive  
 Lewiston, Idaho 83501

Project No: 10-42-004  
 Drawn by: JFS  
 Date: 1/21/2011

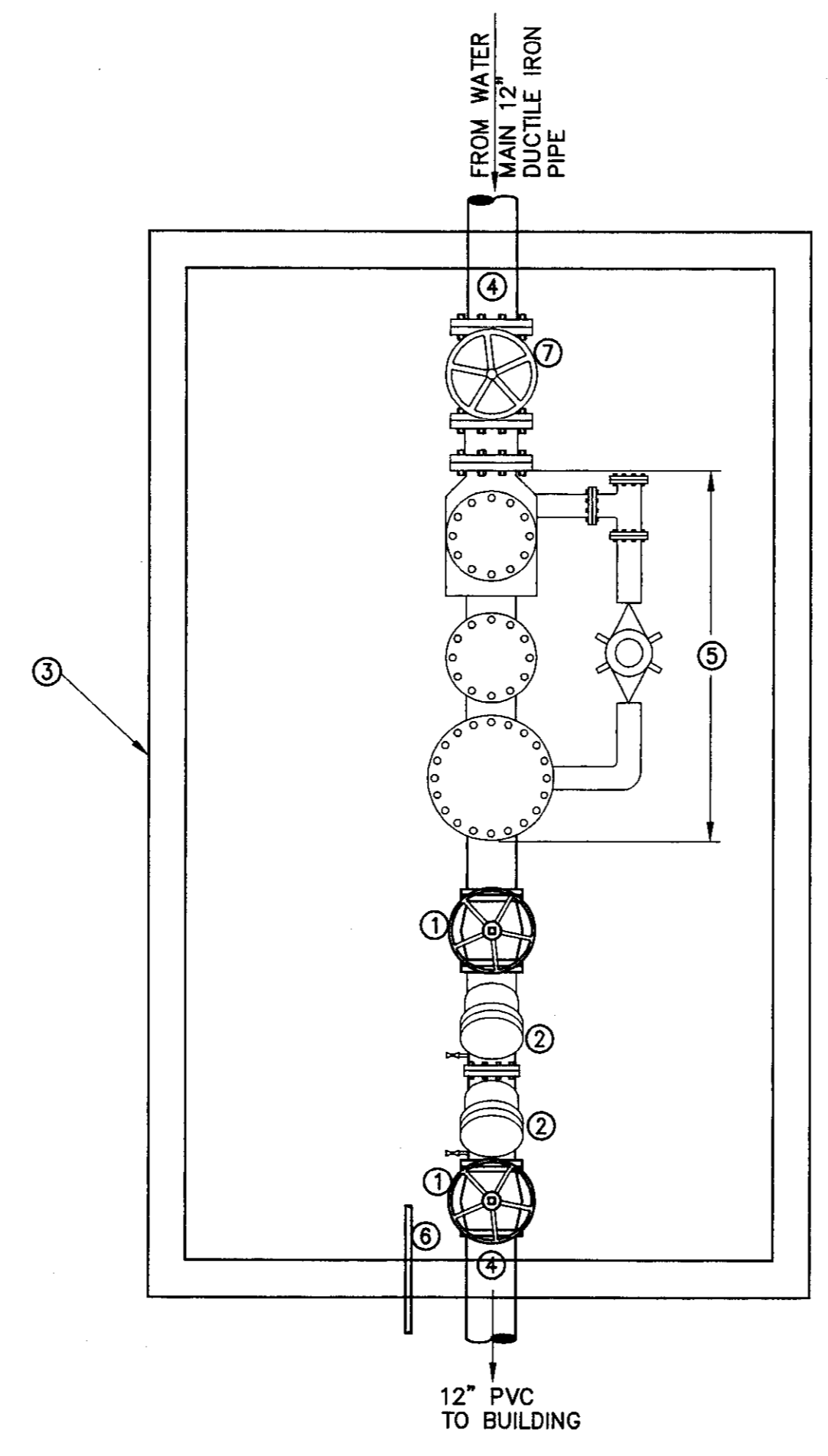
C10.2



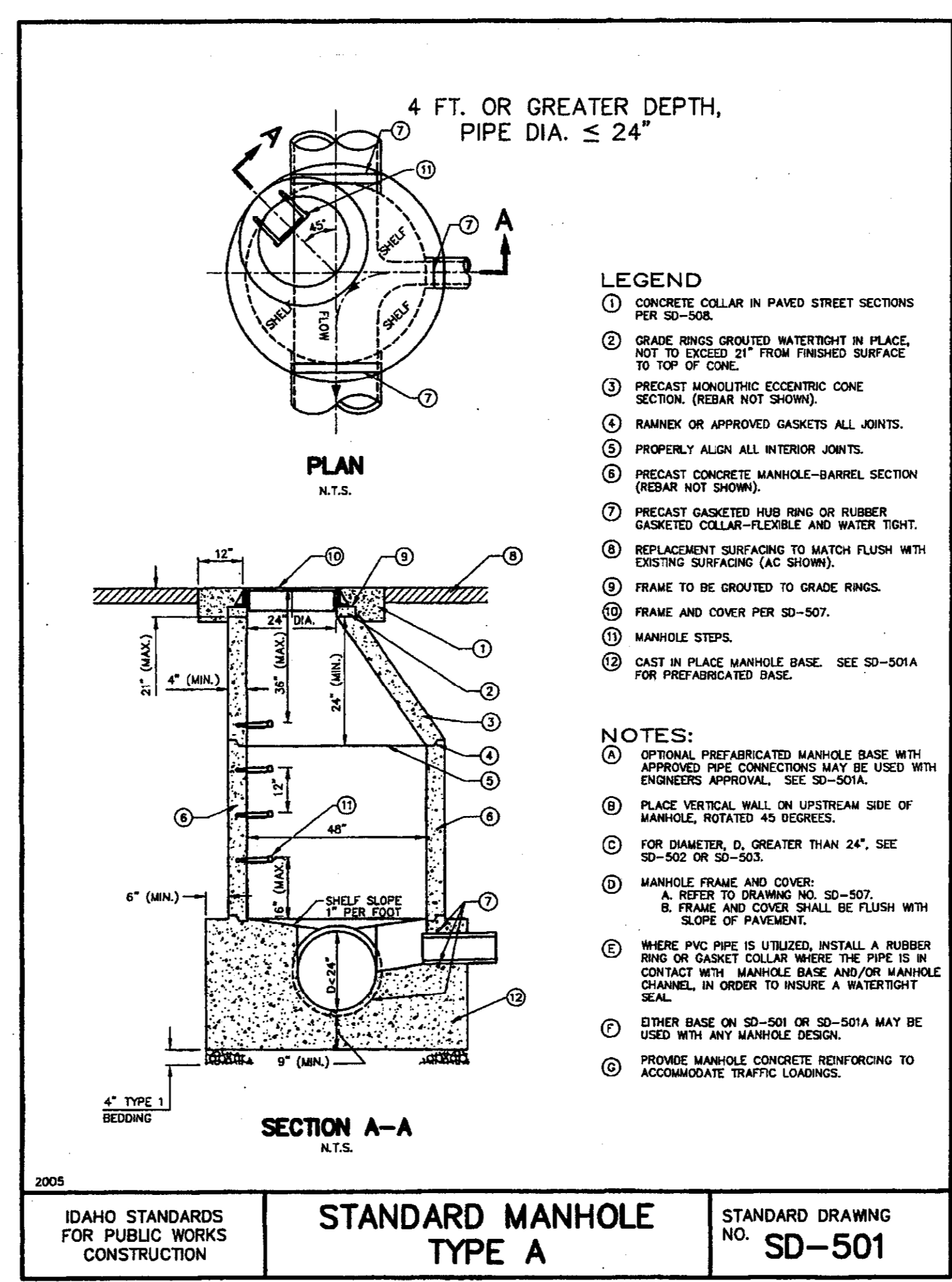
**TYPICAL POST INDICATOR VALVE ASSEMBLY**  
 SCALE: NTS

**MATERIAL LIST:**

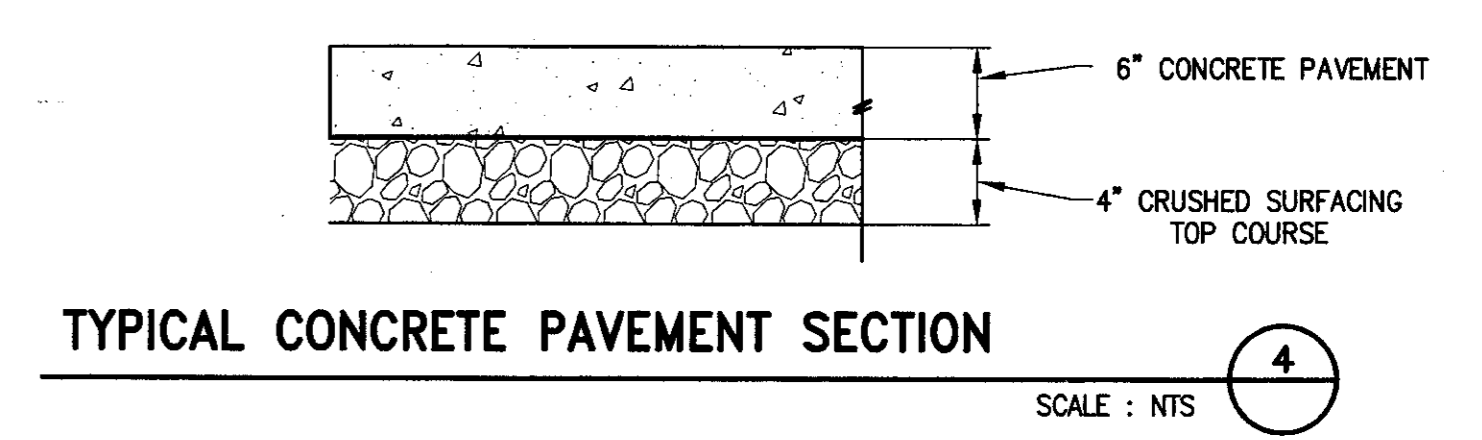
- ① 12" OS & Y GATE VALVE W/HANDWHEEL FL x FL.
- ② 12" DOUBLE DETECTOR CHECK VALVE ASSEMBLY FL x FL.
- ③ WBERT PRECAST UTILITY VAULT PRODUCT #923 WITH AND H-20 LID OR APPROVED EQUAL, SEE DETAIL 7 THIS SHEET
- ④ 12" DUCTILE IRON PIPE.
- ⑤ 12" RESILIENT SEAT GATE VALVE.
- ⑥ 1/2" CONDUIT TO BUILDING.
- ⑦ INSTALL 12" NEPTUNE HP PROTECTUS III FIRE SERVICE METER.



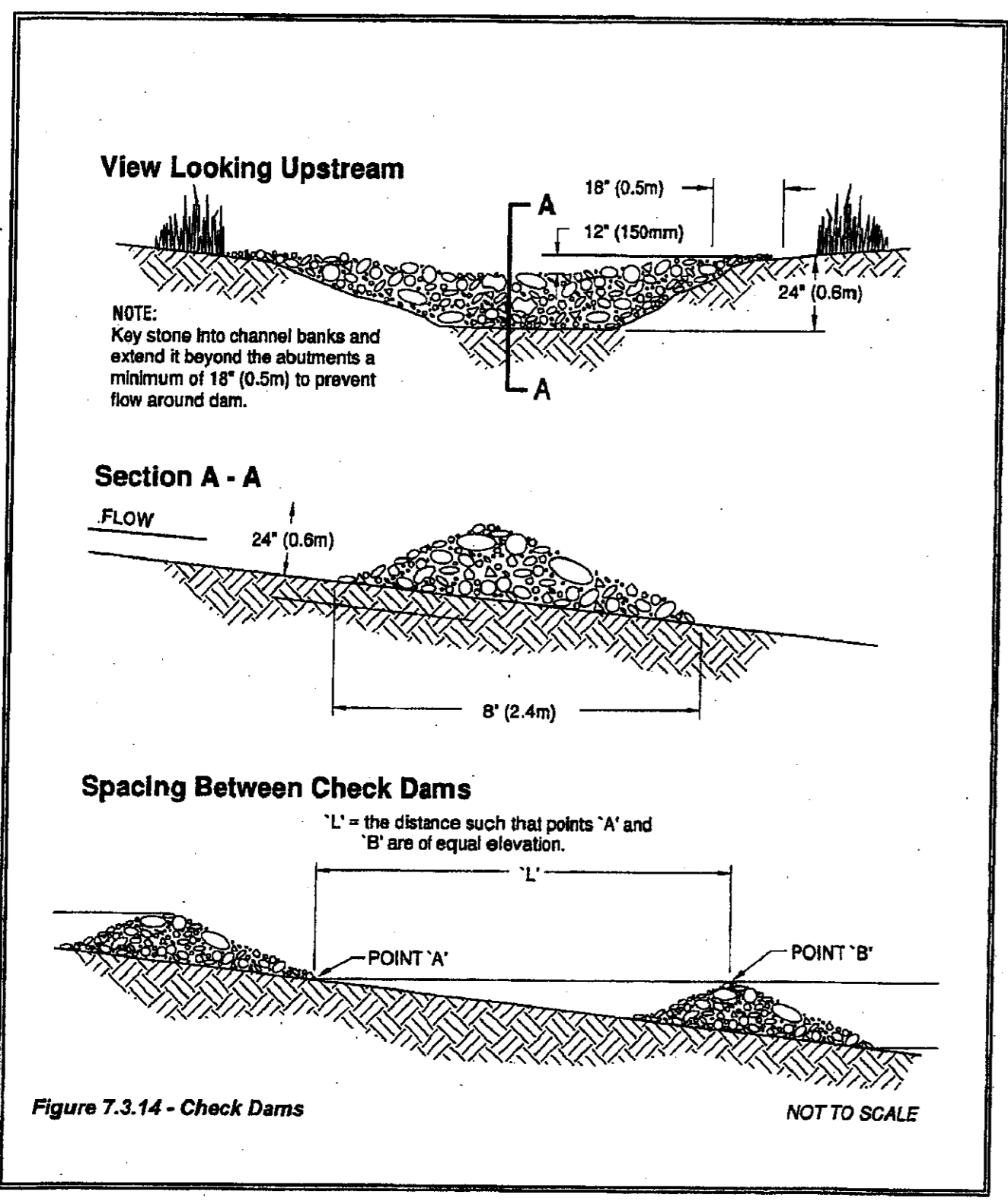
**FIRE VAULT DETAIL**  
 SCALE: NTS



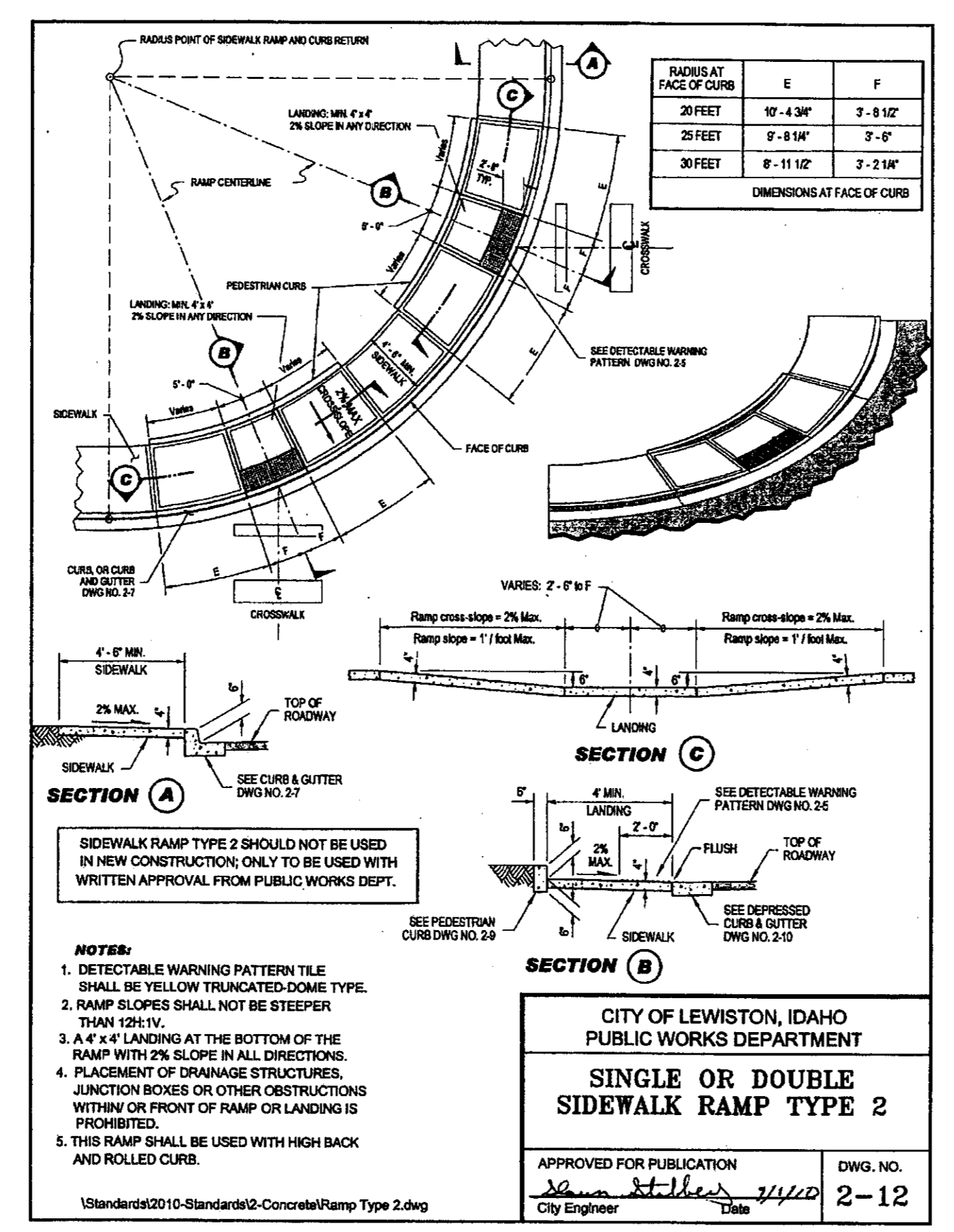
**STANDARD MANHOLE TYPE A**  
 STANDARD DRAWING NO. SD-501  
 IDAHO STANDARDS FOR PUBLIC WORKS CONSTRUCTION



**TYPICAL CONCRETE PAVEMENT SECTION**  
 SCALE: NTS

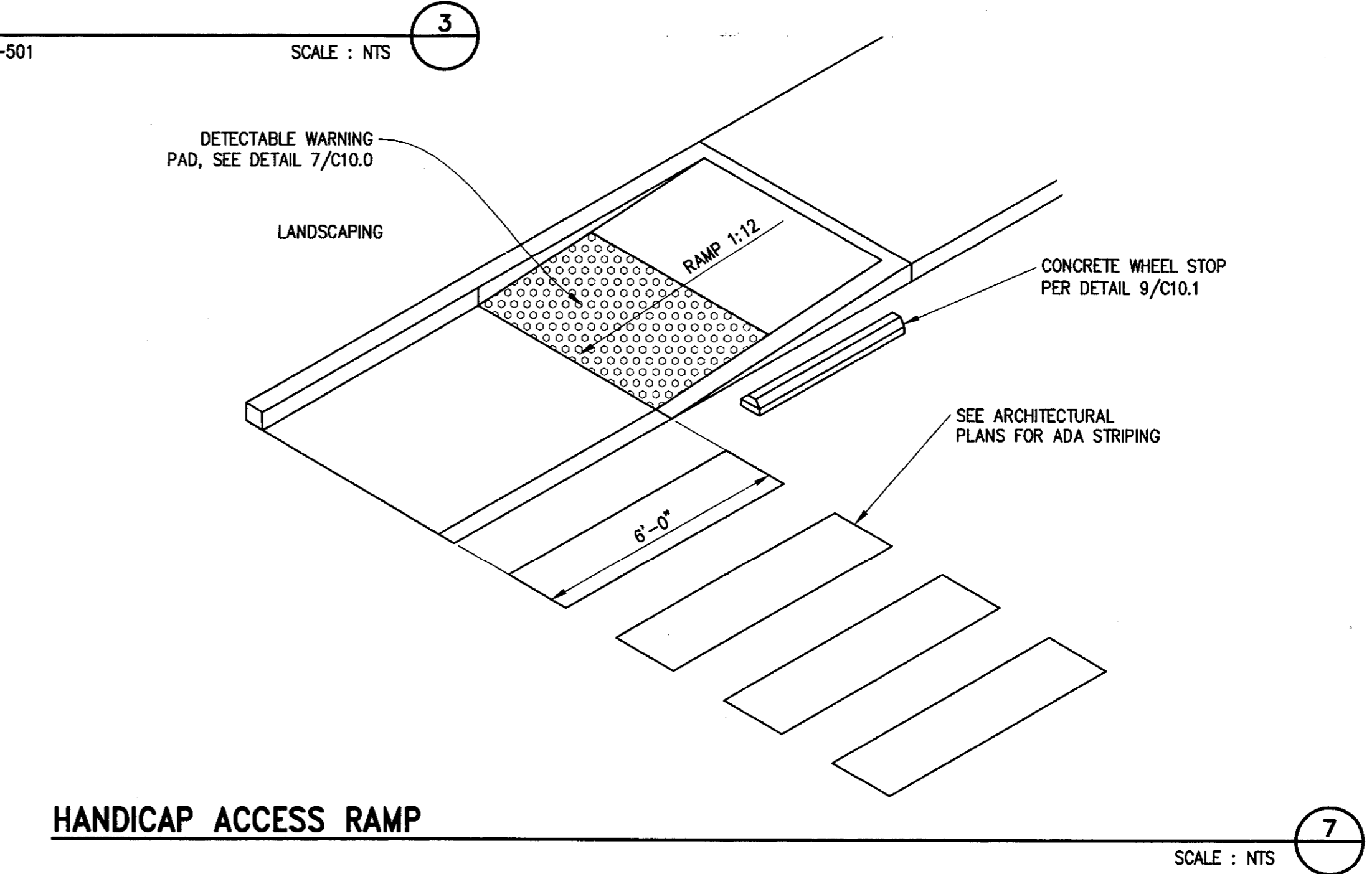


**ROCK CHECK DAMS**  
 SCALE: NTS

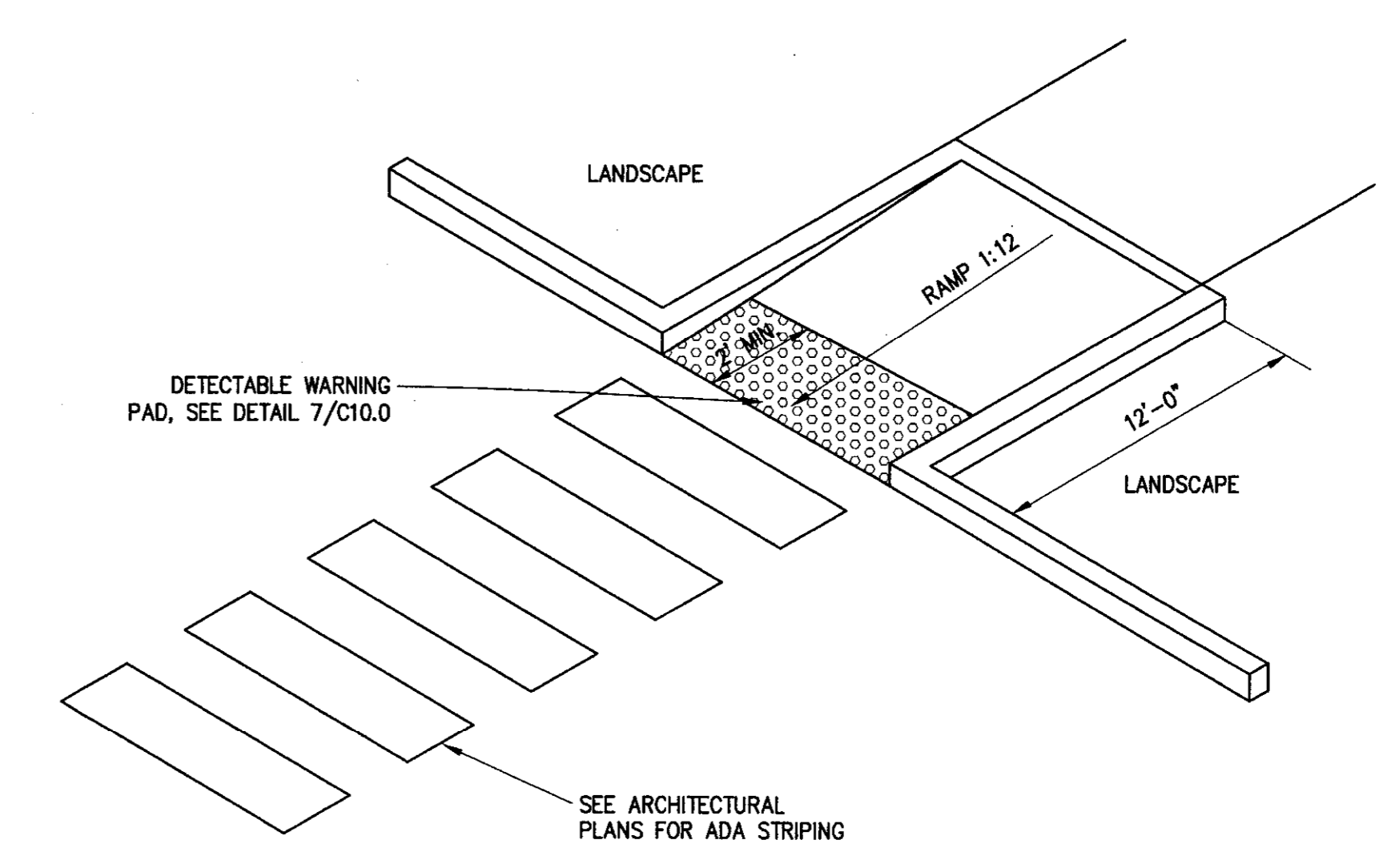


**ACCESSIBLE RAMP**  
 SCALE: NTS

**48" MANHOLE**  
 IDAHO STANDARD PLAN SD-501



**HANDICAP ACCESS RAMP**  
 SCALE: NTS



**HANDICAP ACCESS RAMP**  
 SCALE: NTS

**CONTRACTOR NOTE**

ALL EXISTING UTILITIES SHOWN ON PLANS ARE TO BE VERIFIED HORIZONTALLY AND VERTICALLY PRIOR TO ANY CONSTRUCTION. ALL EXISTING FEATURES INCLUDING BURIED UTILITIES ARE SHOWN AS INDICATED ON RECORD MAPS AND SURVEYS FURNISHED BY OTHERS. WE ASSUME NO LIABILITY FOR THE ACCURACY OF THOSE RECORDS AND SURVEYS. CONTACT THE UTILITY OWNER/AGENCY FOR THE FINAL LOCATION OF EXISTING UTILITIES IN AREAS CRITICAL TO CONSTRUCTION.

UNDERGROUND SERVICE ALERT  
 ONE-CALL NUMBER  
 (800)424-5555  
 CALL TWO BUSINESS DAYS BEFORE YOU DIG