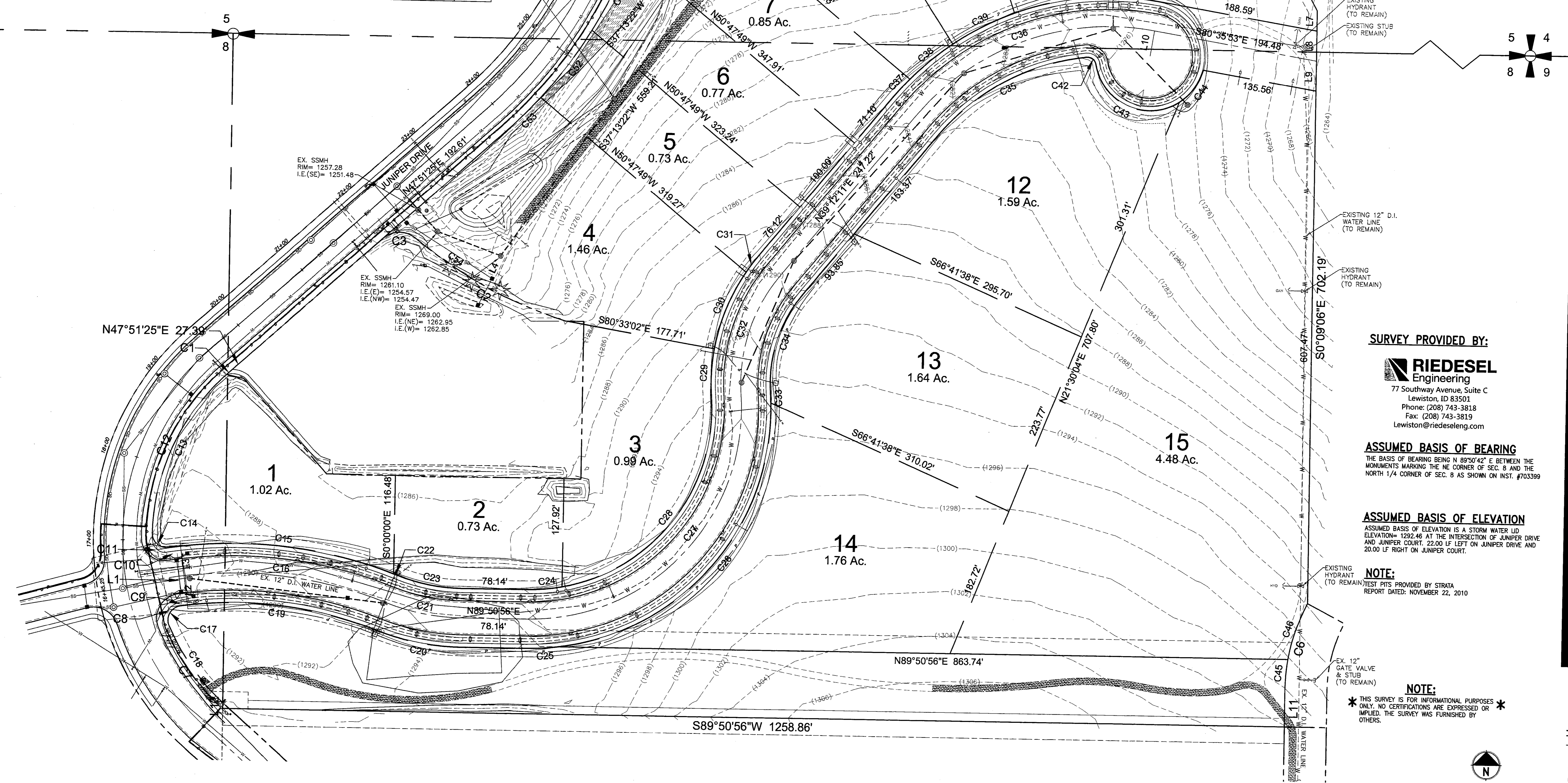


CURVE #	DELTA	RADIUS	ARC LENGTH	CHORD LENGTH	TANGENT	CH BEARING
C1	0°25'31"	265.00'	2.74'	2.74'	1.37'	N47°33'28"E
C2	22°15'46"	530.00'	203.94'	204.64'	104.28'	N62°24'15"W
C3	80°52'13"	30.00'	42.34'	38.92'	25.56'	S88°17'31"W
C4	41°20'20"	535.00'	386.00'	377.68'	201.83'	N87°11'15"E
C5	31°14'57"	300.00'	163.62'	161.60'	83.90'	S74°22'31"E
C6	27°15'58"	225.00'	107.07'	106.07'	54.57'	S13°28'53"W
C7	24°39'00"	265.00'	114.07'	113.13'	57.90'	N35°17'15"W
C8	0°07'03"	17.00'	31.77'	27.34'	23.00'	N30°34'14"E
C9	0°10'12"	470.00'	0.98'	0.98'	0.49'	N84°10'47"E
C10	1°10'10"	530.00'	10.82'	10.82'	5.41'	S83°39'16"W
C11	95°56'11"	17.00'	28.46'	25.25'	18.85'	N48°57'43"W
C12	48°15'02"	265.00'	223.20'	216.72'	118.76'	N23°07'21"E
C13	47°03'23"	265.00'	217.64'	211.58'	115.38'	N24°19'32"E
C14	99°49'32"	17.00'	29.62'	26.01'	20.20'	S49°05'56"E
C15	28°59'00"	535.00'	270.63'	267.75'	138.28'	N84°32'12"W
C16	35°56'06"	500.00'	313.59'	308.48'	162.15'	N87°25'09"W
C17	104°53'33"	17.00'	31.13'	26.96'	22.13'	S29°02'13"W
C18	24°11'11"	265.00'	111.87'	111.04'	56.78'	S35°31'09"E
C19	29°02'45"	465.00'	235.75'	233.23'	120.47'	N63°58'33"W
C20	20°41'58"	285.00'	102.96'	102.40'	52.05'	S79°48'05"E
C21	20°41'58"	250.00'	90.32'	89.83'	45.66'	S79°48'05"E
C22	0°35'37"	535.00'	5.54'	5.54'	2.77'	N69°44'54"W
C23	20°41'58"	215.00'	77.67'	77.25'	39.26'	S79°48'05"E
C24	10°53'47"	215.00'	40.89'	40.83'	20.51'	N84°24'02"E
C25	7°45'13"	285.00'	38.57'	38.54'	19.31'	N85°58'19"E
C26	84°29'37"	285.00'	419.96'	382.98'	258.54'	N39°52'54"E
C27	94°34'46"	250.00'	412.68'	367.40'	270.82'	N42°33'33"E

CURVE #	DELTA	RADIUS	ARC LENGTH	CHORD LENGTH	TANGENT	CH BEARING
C28	83°40'58"	215.00'	314.02'	286.84'	192.51'	N37°06'40"E
C29	13°55'41"	235.00'	57.13'	56.99'	28.70'	S2°14'01"W
C30	24°10'27"	235.00'	99.15'	98.42'	50.32'	S21°17'05"W
C31	5°49'53"	235.00'	23.92'	23.91'	11.97'	S36°17'15"W
C32	43°56'01"	200.00'	153.36'	149.63'	80.67'	S17°14'11"W
C33	2°23'58"	285.00'	11.93'	11.93'	5.97'	N3°31'52"W
C34	43°56'01"	165.00'	126.52'	123.44'	66.53'	S17°14'11"W
C35	44°05'59"	265.00'	203.97'	198.97'	107.34'	S61°15'11"W
C36	60°11'56"	300.00'	313.20'	300.90'	173.90'	S69°18'09"W
C37	4°56'57"	335.00'	28.94'	28.93'	14.48'	S41°40'40"W
C38	11°14'23"	335.00'	65.72'	65.61'	32.96'	S49°46'20"W
C39	14°04'37"	335.00'	82.31'	82.10'	41.36'	S62°25'50"W
C40	18°49'11"	335.00'	110.04'	109.54'	55.52'	S78°52'44"W
C41	11°06'49"	335.00'	64.98'	64.88'	32.59'	S49°46'20"W
C42	86°37'40"	10.00'	15.12'	13.72'	9.43'	N53°22'59"W
C43	113°09'07"	65.00'	128.37'	108.50'	98.49'	S66°38'43"E
C44	42°57'54"	65.00'	48.74'	47.61'	25.58'	N35°17'46"E
C45	9°18'38"	225.00'	36.56'	36.52'	18.32'	S4°30'11"W
C46	17°57'24"	225.00'	70.52'	70.23'	35.55'	S18°08'12"W
C47	21°51'54"	300.00'	114.49'	113.79'	57.95'	N69°41'00"W
C48	9°23'03"	300.00'	49.13'	49.08'	24.62'	N85°18'28"W
C49	1°25'47"	335.00'	13.25'	13.25'	6.68'	N7°13'59"E
C50	11°52'08"	335.00'	110.63'	110.63'	55.61'	N13°52'57"E
C51	11°02'52"	335.00'	103.16'	103.00'	51.74'	N25°20'27"E
C52	10°44'23"	535.00'	100.28'	100.13'	50.29'	N36°14'05"E
C53	6°15'06"	535.00'	98.38'	98.35'	49.22'	N44°43'50"E
C54	11°48'32"	530.00'	109.33'	109.13'	54.86'	N57°11'03"W



SURVEY PROVIDED BY:
RIEDEL
 Engineering
 77 Southway Avenue, Suite C
 Lewiston, ID 83501
 Phone: (208) 743-3818
 Fax: (208) 743-3819
 Lewiston@riedeleng.com

ASSUMED BASIS OF BEARING
 THE BASIS OF BEARING BEING N 89°50'42" E BETWEEN THE MONUMENTS MARKING THE NE CORNER OF SEC. 8 AND THE NORTH 1/4 CORNER OF SEC. 8 AS SHOWN ON INST. #703399

ASSUMED BASIS OF ELEVATION
 ASSUMED BASIS OF ELEVATION IS A STORM WATER LID ELEVATION = 1292.46 AT THE INTERSECTION OF JUNIPER DRIVE AND JUNIPER COURT, 22.00 LF LEFT ON JUNIPER DRIVE AND 20.00 LF RIGHT ON JUNIPER COURT.

NOTE:
 TEST PITS PROVIDED BY STRATA REPORT DATED: NOVEMBER 22, 2010

NOTE:
 * THIS SURVEY IS FOR INFORMATIONAL PURPOSES ONLY. NO CERTIFICATIONS ARE EXPRESSED OR IMPLIED. THE SURVEY WAS FURNISHED BY OTHERS.

CONTRACTOR NOTE

ALL EXISTING UTILITIES SHOWN ON PLANS ARE TO BE VERIFIED HORIZONTALLY AND VERTICALLY PRIOR TO ANY CONSTRUCTION. ALL EXISTING FEATURES INCLUDING BURIED UTILITIES ARE SHOWN AS INDICATED ON RECORD MAPS AND SURVEYS FURNISHED BY OTHERS. WE ASSUME NO LIABILITY FOR THE ACCURACY OF THOSE RECORDS AND SURVEYS. CONTACT THE UTILITY OWNER/AGENCY FOR THE FINAL LOCATION OF EXISTING UTILITIES IN AREAS CRITICAL TO CONSTRUCTION.

UNDERGROUND SERVICE ALERT
 ONE-CALL NUMBER
(800)424-5555
 CALL TWO BUSINESS DAYS BEFORE YOU DIG