

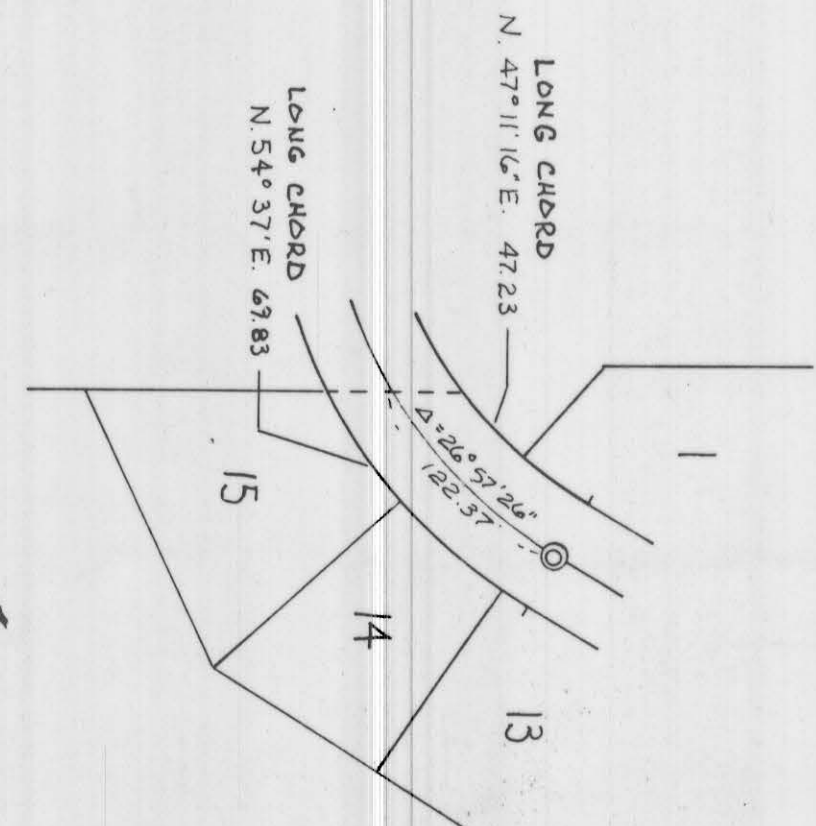
BLOCK FOUR OF SHILOH TERRACE ADDITION

WITHIN THE SE 1/4 SW 1/4 OF SECTION 12, AND WITHIN THE NE 1/4 NW 1/4 OF SECTION 13, T. 35 N., R. 6 W., B.M., IN THE CITY OF LEWISTON, COUNTY OF NEZ PERCE, IDAHO

SCALE
1" = 100'



DETAIL-A



SE COR. LOT 22 BLK 3
N. 0° 15' 14\"/>

N. 89° 44' 46\"/>

930.76 (970.76) RECORDED PER SHILOH TERRACE BLK 3

UNPLATTED

UNPLATTED

UNPLATTED

UNPLATTED

UNPLATTED

UNPLATTED

UNPLATTED

UNPLATTED

UNPLATTED

UNPLATTED

UNPLATTED

UNPLATTED

UNPLATTED

UNPLATTED

UNPLATTED

UNPLATTED

UNPLATTED

UNPLATTED

UNPLATTED

UNPLATTED

UNPLATTED

UNPLATTED

SEE DETAIL-A FOR INFORMATION

SEC. 12, T. 35 N., R. 6 W., B.M.
SEC. 13, T. 35 N., R. 6 W., B.M.
NE COR. NE 1/4 NW 1/4 SECTION 13

NE CORNER
SE 1/4 SW 1/4 SECTION 12