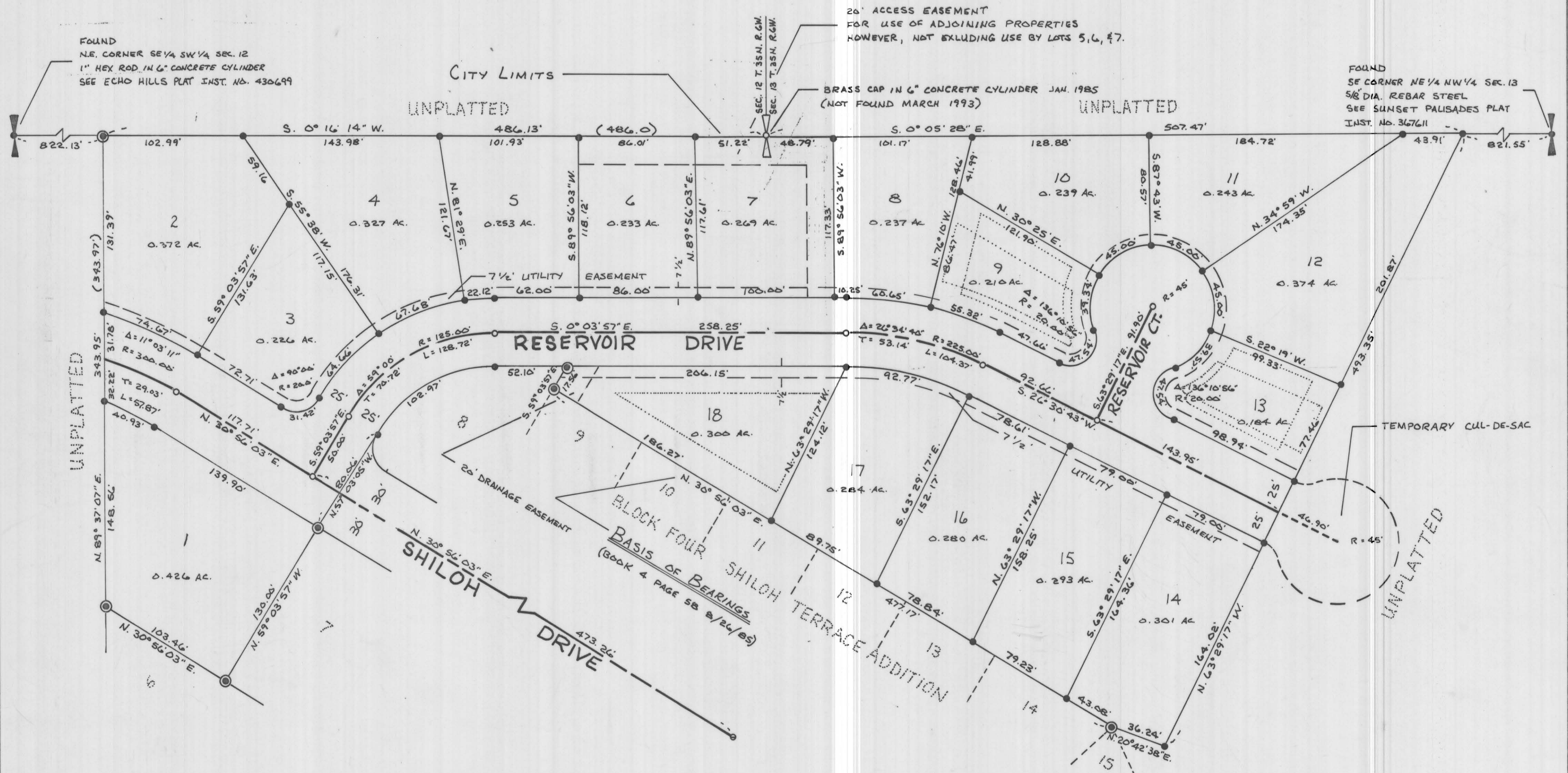


BLOCK FIVE OF SHILOH TERRACE ADDITION

BEING A PART OF THE SE 1/4 SW 1/4 OF SECTION 12, AND A PART OF THE NE 1/4 NW 1/4 OF SECTION 13 OF TOWNSHIP 35 NORTH, RANGE 6 WEST, B.M., IN THE CITY OF LEWISTON, COUNTY OF NEZ PERCE, IDAHO.



SURVEYORS WEST
914 6TH STREET
CLARKSTON, WASHINGTON

DATE: JANUARY 19, 1993

JOB No. 92-14

- LEGEND**
- ⊙ = FOUND 5/8" REBAR STEEL
 - = SET 5/8" x 30" REBAR STEEL
 - ⊙ = FOUND STANDARD CITY OF LEWISTON BRASS CAP
 - = SET STANDARD CITY OF LEWISTON BRASS CAP
 - 343.95 = RECORD DISTANCE
 - (343.97) = MEASURED DISTANCE
 - = BUILDING SETBACK LINES

0 25 50 100
SCALE 1" = 50'

