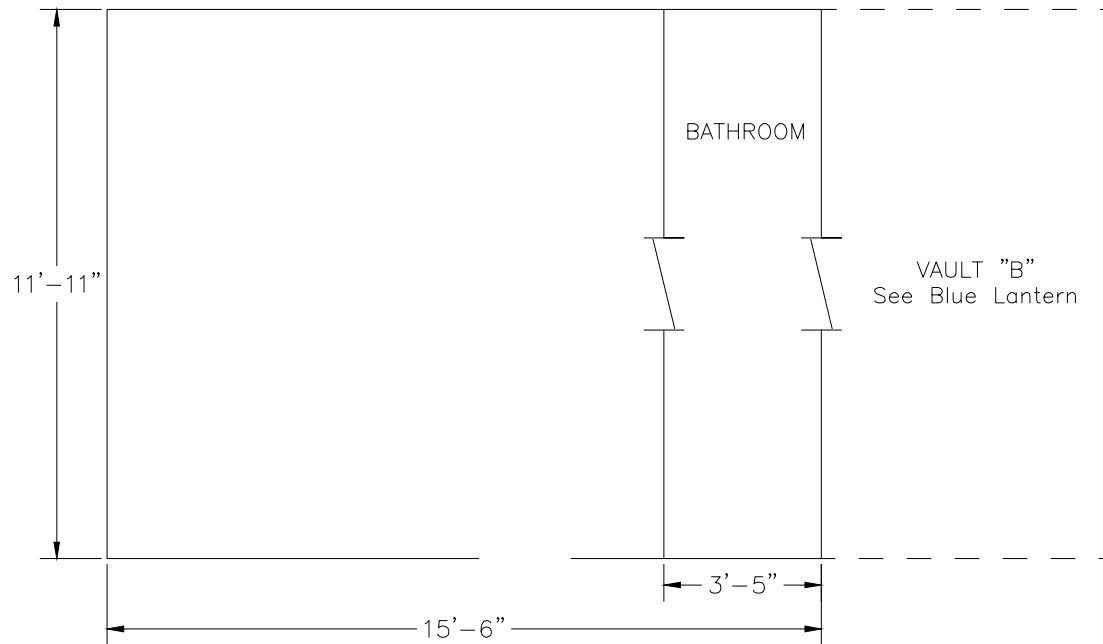




326 $\frac{1}{2}$ MAIN ST—WILD AT ART
VAULT "A"

MAIN ST SIDE



*DIMENSIONS TAKEN ON SITE ARE APPROXIMATE

LEWISTON DOWNTOWN VAULT INVENTORY
LEWISTON, IDAHO

VAULT SCHEMATIC



tdhengineering.com
GREAT FALLS-BOZEMAN-KALISPELL-SHELBY MONTANA
SPOKANE WASHINGTON
LEWISTON IDAHO
WATFORD CITY NORTH DAKOTA

DRAWN BY:	DLR
DESIGNED BY:	
QUALITY CHECK:	JLB
DATE:	08/18/16
JOB NO.	L16-028
CAD NO.	VAULT DRAWING