

PROJECT IS LOCATED AT
1534 3RD AVE N. IN
LEWISTON ID.

Drawing Name: Port of Lewiston

DRAWN BY: Ron Glessner 03-14-18

1534 3RD AVE N.

SIZE	FSCMNO	REV
SCALE	SHEET	Cover

REV.			
REV.	DESCRIPTION	DATE	BY
REV.	DESCRIPTION	DATE	BY

Contact Information

Port of Lewiston
Dave Doeringsfeld
208-743-5531
Outside Plant Maintenance, llc
Ron Glessner 208-661-5648

State: ID
County: Nez Perce
City: Lewiston

Section:
Township:
Range:
Legal:



GENERAL CONSTRUCTION NOTES

CONTRACTOR IS RESPONSIBLE FOR ALL PERMITS EXCEPT STATE HWY., COUNTY ROAD,RAILROAD OR WATER CROSSINGS.

RESTORATION OF ALL RIGHT OF WAY GROUND WILL BE RESTORED TO ORIGINAL CONDITION OR BETTER.

CONTRACTOR WILL COORDINATE WITH OSP MANAGER 24 HRS. PRIOR TO BEGINNING CONSTRUCTION.

OSP MANAGER WILL CONTACT BUILDING OWNER/TENANT 24 HRS. PRIOR TO BEGINNING CONSTRUCTION TO COORDINATE ACCESS TO BUILDINGS.

CONTRACTOR IS RESPONSIBLE FOR CALLING LOCATES AND IS RESPONSIBLE FOR REPAIR AND RESTORATION OF DAMAGED UTILITIES.

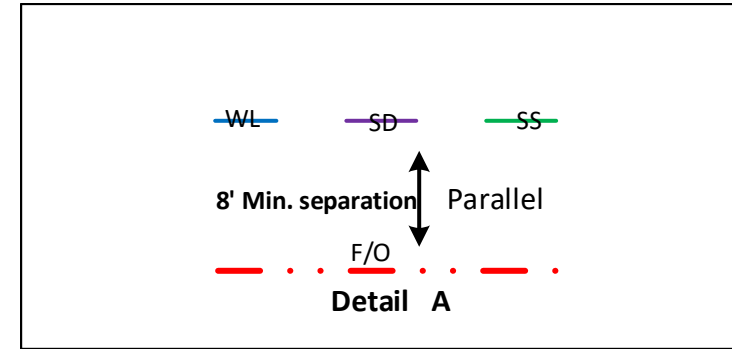
FOLLOW ALL NESC CONSTRUCTION GUIDELINES.

CONTRACTOR WILL HAVE ON SITE THE APPROVED DRAWINGS FROM THE UTILITY AND OR STATE,COUNTY,CITY,RAILROAD.

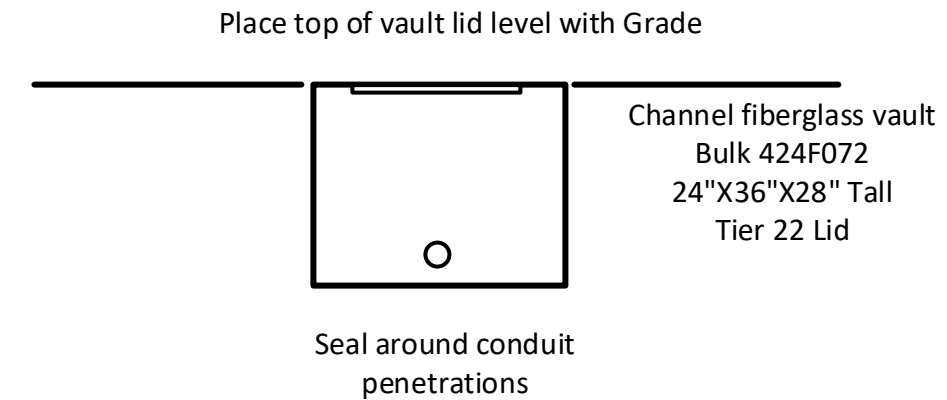
CONTRACTOR WILL PROVIDE CONDUIT , HAND HOLES , ANCHORS, AERIAL HARDWARE , LOCATE WIRE

PORT OF LEWISTON (POL) WILL PROVIDE , FIBER OPTIC CABLE , AERIAL MARKERS , AND LINE ROUTE MARKERS.

	CULVERT
	DIRECTIONAL BORE
	EXISTING CONDUIT
	BURIED CABLE
	NEW ANCHOR
	SIDEWALK ANCHOR
	EXISTING ANCHOR
	OVERHEAD GUY
	ATTACH TO POLE GROUND
	FIBER SLACK LOOP
	JOINT USE POLE
	CABLE CHANGE
	BURIED ROUTE MARKER
	EXISTING HAND HOLE
	NEW HAND HOLE

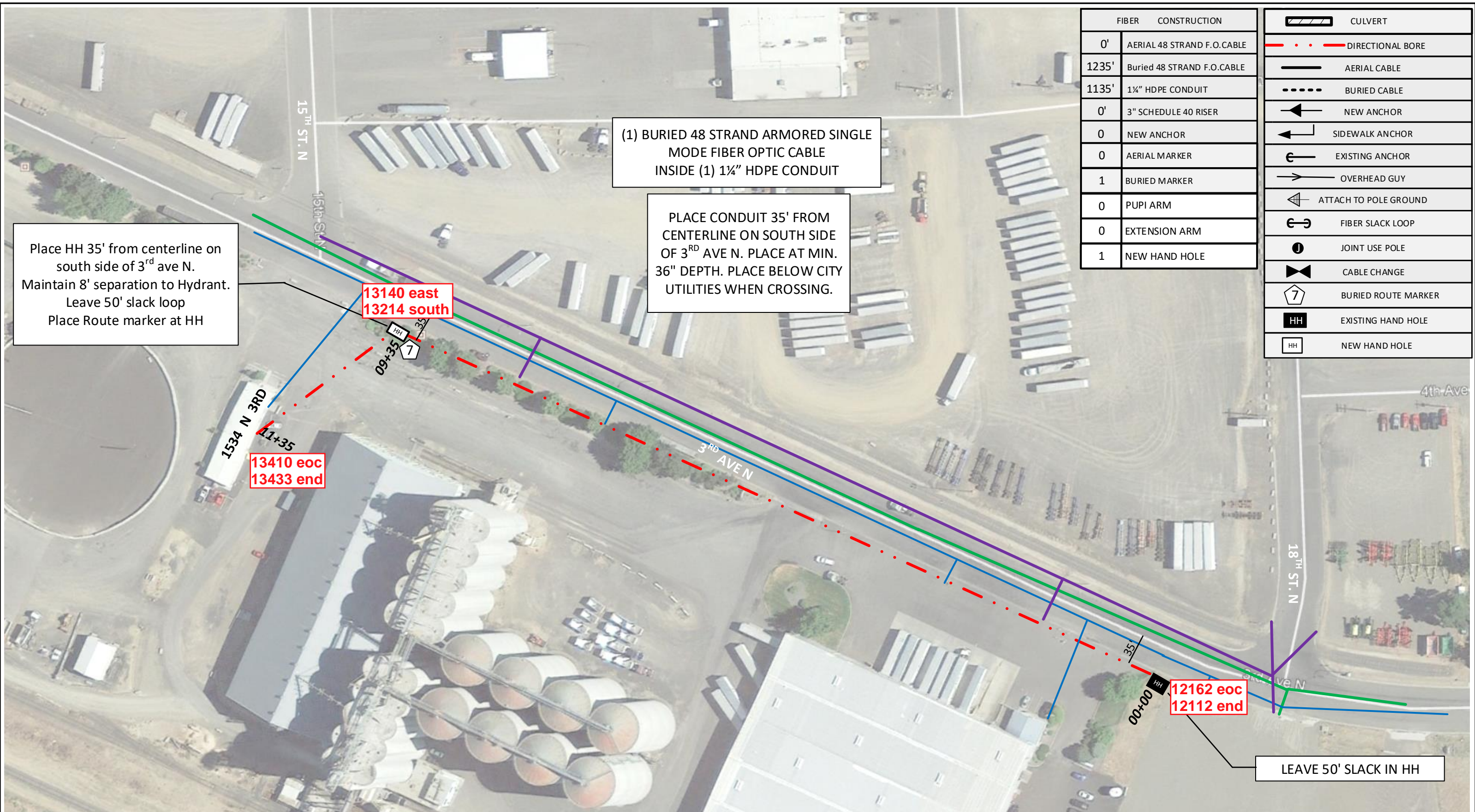


Vault/ Hand Hole Detail



Drawing Name:Port of Lewiston		Drawn By:Ron Glessner 03-14-18				Contact Information				State:ID. County:Nez Perce City:Lewiston		
		1534 3RD AVE N.				Port of Lewiston Dave Doeringsfeld 208-743-5531 Outside Plant Maintenance,llc Ron Glessner208-661-5648				Section: Township: Range: Legal:		
SIZE	FSCMNO	DWG NO		REV	REV.	DESCRIPTION	DATE	BY	REV.	DESCRIPTION	DATE	BY
SCALE	No scale	SHEET 2			REV.	DESCRIPTION	DATE	BY	REV.	DESCRIPTION	DATE	BY





FIBER	CONSTRUCTION
0'	AERIAL 48 STRAND F.O.CABLE
1235'	Buried 48 STRAND F.O.CABLE
1135'	1 1/4" HDPE CONDUIT
0'	3" SCHEDULE 40 RISER
0	NEW ANCHOR
0	AERIAL MARKER
1	BURIED MARKER
0	PUPI ARM
0	EXTENSION ARM
1	NEW HAND HOLE

	CULVERT
	DIRECTIONAL BORE
	AERIAL CABLE
	BURIED CABLE
	NEW ANCHOR
	SIDEWALK ANCHOR
	EXISTING ANCHOR
	OVERHEAD GUY
	ATTACH TO POLE GROUND
	FIBER SLACK LOOP
	JOINT USE POLE
	CABLE CHANGE
	BURIED ROUTE MARKER
	EXISTING HAND HOLE
	NEW HAND HOLE

Place HH 35' from centerline on south side of 3rd ave N. Maintain 8' separation to Hydrant. Leave 50' slack loop Place Route marker at HH

(1) BURIED 48 STRAND ARMORED SINGLE MODE FIBER OPTIC CABLE INSIDE (1) 1 1/4" HDPE CONDUIT

PLACE CONDUIT 35' FROM CENTERLINE ON SOUTH SIDE OF 3RD AVE N. PLACE AT MIN. 36" DEPTH. PLACE BELOW CITY UTILITIES WHEN CROSSING.

Drawing Name: Port of Lewiston	
SIZE	FSCMNO
SCALE	SHEET 3

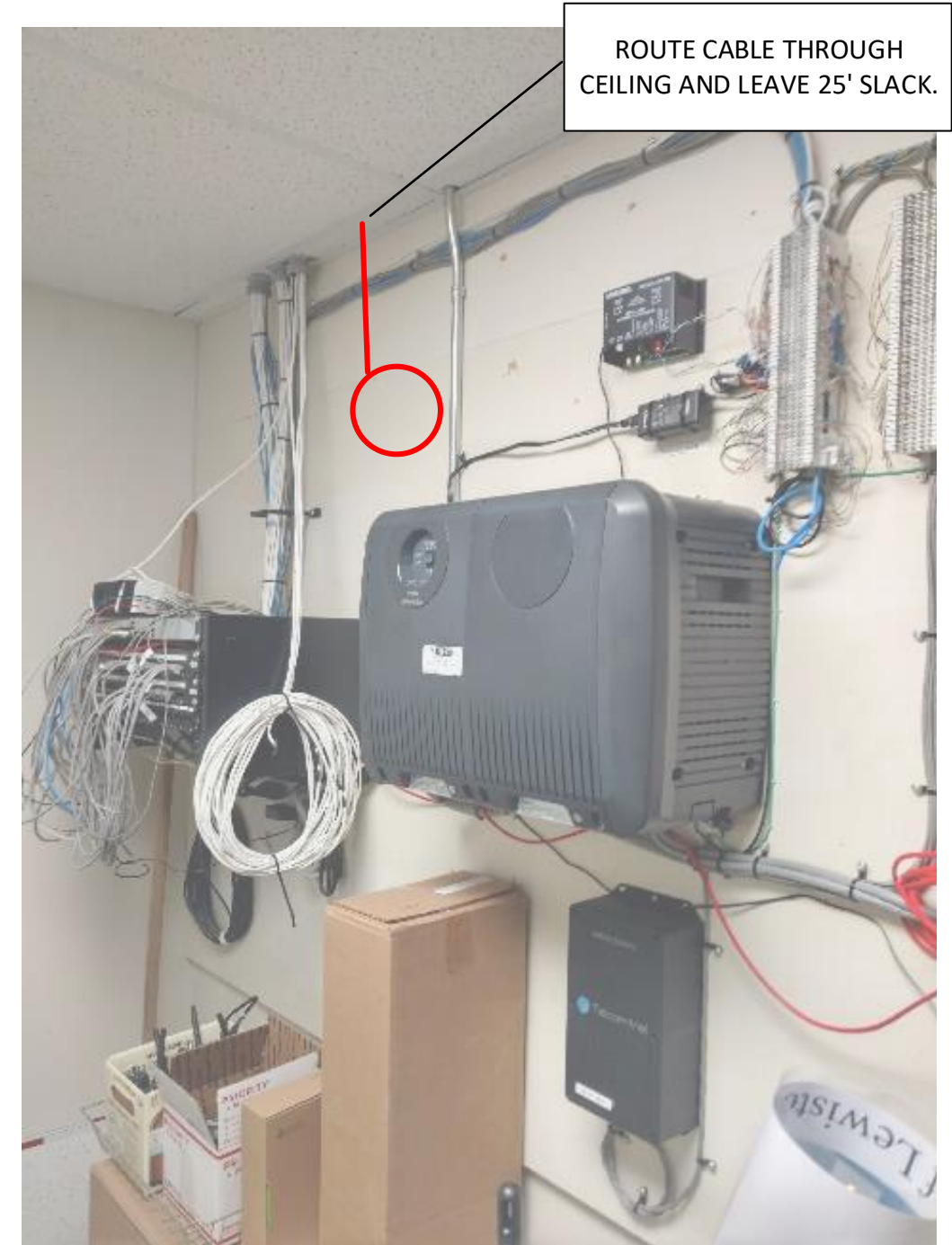
Drawn By: Ron Glessner 03-14-18	
1534 3rd AVE N.	
DWG NO	REV
SHEET 3	

REV.	DESCRIPTION	DATE	BY

Contact Information
 Port of Lewiston
 Dave Doeringsfeld
 208-743-5531
 Outside Plant Maintenance, llc
 Ron Glessner 208-661-5648

State: ID
 County: Nez Perce
 City: Lewiston
 Section:
 Township:
 Range:
 Legal:





Drawing Name: Port of Lewiston	Drawn By: Ron Glessner 03-14-18			
	1534 3RD AVE N			
	SIZE	FSCMNO	DWG NO	REV
	SCALE		SHEET 4	

REV.	DESCRIPTION	DATE	BY

Contact Information

Port of Lewiston
 Dave Doeringsfeld
 208-743-5531
 Outside Plant Maintenance, llc
 Ron Glessner 208-661-5648

State: ID
 County: Nez Perce
 City: Lewiston

Section:
 Township:
 Range:
 Legal:

