

**PROJECT IS LOCATED AT 155
SOUTHPORT AVE IN
LEWISTON ID.**

Drawing Name: Port of Lewiston		DRAWN BY: Ron Glessner 05-21-19	
155 SOUTHPORT AVE			
SIZE	FSCM NO	REV	
SCALE	SHEET 1		

REV.			
REV.	DESCRIPTION	DATE	BY
REV.	DESCRIPTION	DATE	BY

Contact Information

Port of Lewiston
 Dave Doeringsfeld
 208-743-5531
 Outside Plant Maintenance, llc
 Ron Glessner 208-661-5648

State: ID
 County: Nez Perce
 City: Lewiston

Section:
 Township:
 Range:
 Legal:



GENERAL CONSTRUCTION NOTES

CONTRACTOR IS RESPONSIBLE FOR ALL PERMITS EXCEPT STATE HWY., COUNTY ROAD,RAILROAD OR WATER CROSSINGS.

RESTORATION OF ALL RIGHT OF WAY GROUND WILL BE RESTORED TO ORIGINAL CONDITION OR BETTER.

CONTRACTOR WILL COORDINATE WITH OSP MANAGER 24 HRS. PRIOR TO BEGINNING CONSTRUCTION.

OSP MANAGER WILL CONTACT BUILDING OWNER/TENANT 24 HRS. PRIOR TO BEGINNING CONSTRUCTION TO COORDINATE ACCESS TO BUILDINGS.

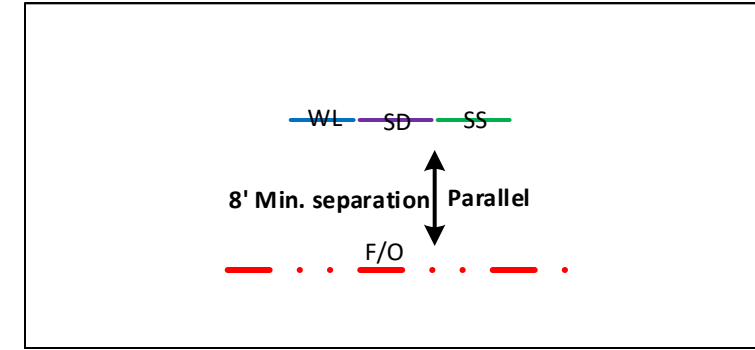
CONTRACTOR IS RESPONSIBLE FOR CALLING LOCATES AND IS RESPONSIBLE FOR REPAIR AND RESTORATION OF DAMAGED UTILITIES.

FOLLOW ALL NESC CONSTRUCTION GUIDELINES.

BURIED CONDUIT MUST CROSS UNDERNEATH ALL CITY UTILITIES

CONTRACTOR WILL HAVE ON SITE THE APPROVED DRAWINGS FROM THE UTILITY AND OR STATE,COUNTY,CITY,RAILROAD.

CONTRACTOR WILL PROVIDE CONDUIT, HAND HOLE AND 12CT FIBER OPTIC CABLE

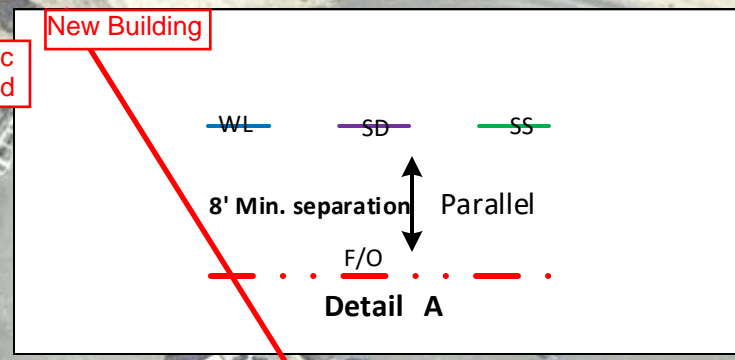


	CULVERT
	DIRECTIONAL BORE
	EXISTING CONDUIT
	BURIED CABLE
	NEW ANCHOR
	SIDEWALK ANCHOR
	EXISTING ANCHOR
	OVERHEAD GUY
	ATTACH TO POLE GROUND
	FIBER SLACK LOOP
	JOINT USE POLE
	CABLE CHANGE
	BURIED ROUTE MARKER
	EXISTING HAND HOLE
	NEW HAND HOLE

Drawing Name:Port of Lewiston	Drawn By:Ron Glessner 05-21-19				REV.				Contact Information Port of Lewiston Dave Doeringsfeld 208-753-5531 Outside Plant Maintenance,llc Ron Glessner208-661-5648	State:ID County:Nez Perce City:Lewiston
	155 SOUTHPORT AVE				REV.	DESCRIPTION	DATE	BY		
	SIZE	FSCM NO	DWG NO	REV	REV.	DESCRIPTION	DATE	BY	Section: Township: Range: Legal:	
	SCALE	No scale		SHEET 2	REV.	DESCRIPTION	DATE	BY		
					REV.	DESCRIPTION	DATE	BY		



BRING CONDUIT TO BACK OF INLAND CELLULAR CABINET OUTSIDE NW CORNER OF BUILDING. LEAVE 25' F/O CABLE SLACK



FIBER	CONSTRUCTION
0'	AERIAL 12 STRAND F.O.CABLE
660'	Buried 12 STRAND F.O.CABLE
585'	1 1/4" HDPE CONDUIT
0'	3" SCHEDULE 40 RISER
0	NEW ANCHOR
0	AERIAL MARKER
1	BURIED MARKER
0	PUPI ARM
0	EXTENSION ARM
0	NEW HAND HOLE

79746 eoc
79720 end

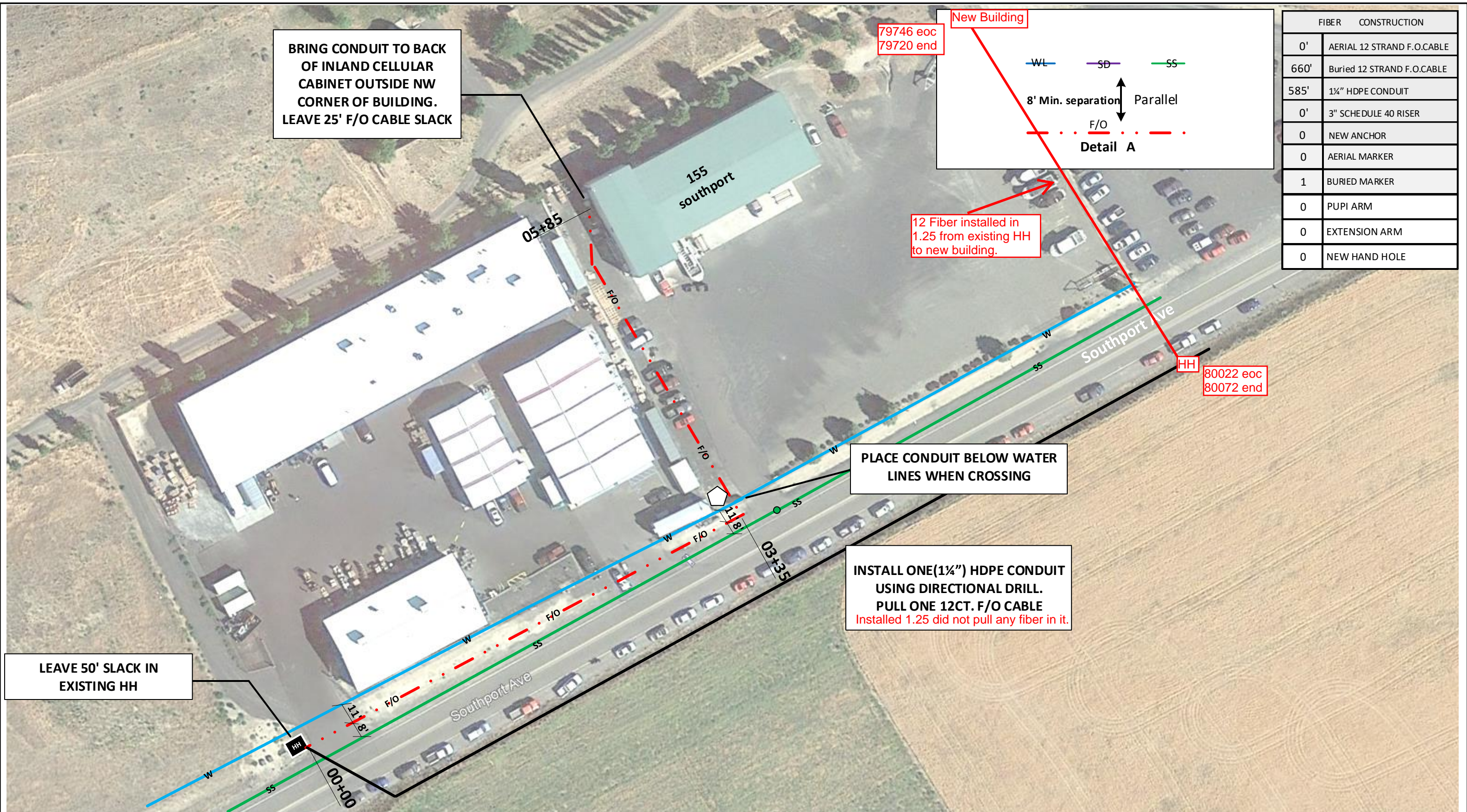
12 Fiber installed in 1.25 from existing HH to new building.


80022 eoc
80072 end

PLACE CONDUIT BELOW WATER LINES WHEN CROSSING

INSTALL ONE(1 1/4") HDPE CONDUIT USING DIRECTIONAL DRILL. PULL ONE 12CT. F/O CABLE
Installed 1.25 did not pull any fiber in it.

LEAVE 50' SLACK IN EXISTING HH



Drawing Name: Port of Lewiston		Drawn By: Ron Glessner 05-21-19		REV.	DESCRIPTION	DATE	BY	Contact Information		State: ID County: Nez Perce City: Lewiston	
		155 SOUTHPORT AVE		REV.	DESCRIPTION	DATE	BY	Port of Lewiston Dave Doeringsfeld 208-743-5531		Section: Township: Range: Legal:	
SIZE	FSCM NO	DWG NO		REV.	DESCRIPTION	DATE	BY	Outside Plant Maintenance, llc Ron Glessner 208-661-5648			
SCALE		SHEET 3		REV.	DESCRIPTION	DATE	BY				
				REV.	DESCRIPTION	DATE	BY				