



GENERAL CONSTRUCTION NOTES

CONTRACTOR IS RESPONSIBLE FOR ALL PERMITS EXCEPT STATE HWY., COUNTY ROAD,RAILROAD OR WATER CROSSINGS.

RESTORATION OF ALL RIGHT OF WAY GROUND WILL BE RESTORED TO ORIGINAL CONDITION OR BETTER.

CONTRACTOR WILL COORDINATE WITH OSP MANAGER 24 HRS. PRIOR TO BEGINNING CONSTRUCTION.

OSP MANAGER WILL CONTACT BUILDING OWNER/TENANT 24 HRS. PRIOR TO BEGINNING CONSTRUCTION TO COORDINATE ACCESS TO BUILDINGS.
















CONTRACTOR IS RESPONSIBLE FOR CALLING LOCATES AND IS RESPONSIBLE FOR REPAIR AND RESTORATION OF DAMAGED UTILITIES.

FOLLOW ALL NESC CONSTRUCTION GUIDELINES.

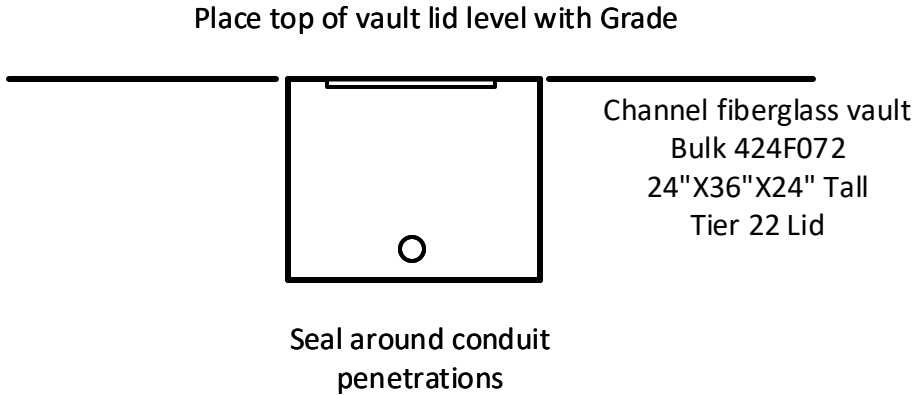
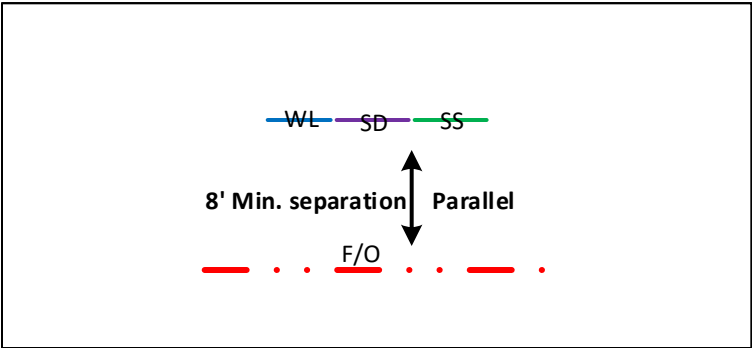
BURIED CONDUIT MUST CROSS UNDERNEATH ALL CITY UTILITIES

CONTRACTOR WILL HAVE ON SITE THE APPROVED DRAWINGS FROM THE UTILITY AND OR STATE,COUNTY,CITY,RAILROAD.

CONTRACTOR WILL PROVIDE CONDUIT, HAND HOLE AND 12CT FIBER OPTIC CABLE

	CULVERT
	DIRECTIONAL BORE
	EXISTING CONDUIT
	BURIED CABLE
	NEW ANCHOR
	SIDEWALK ANCHOR
	EXISTING ANCHOR
	OVERHEAD GUY
	ATTACH TO POLE GROUND
	FIBER SLACK LOOP
	JOINT USE POLE
	CABLE CHANGE
	BURIED ROUTE MARKER
	EXISTING HAND HOLE
	NEW HAND HOLE

Vault/ Hand Hole Detail

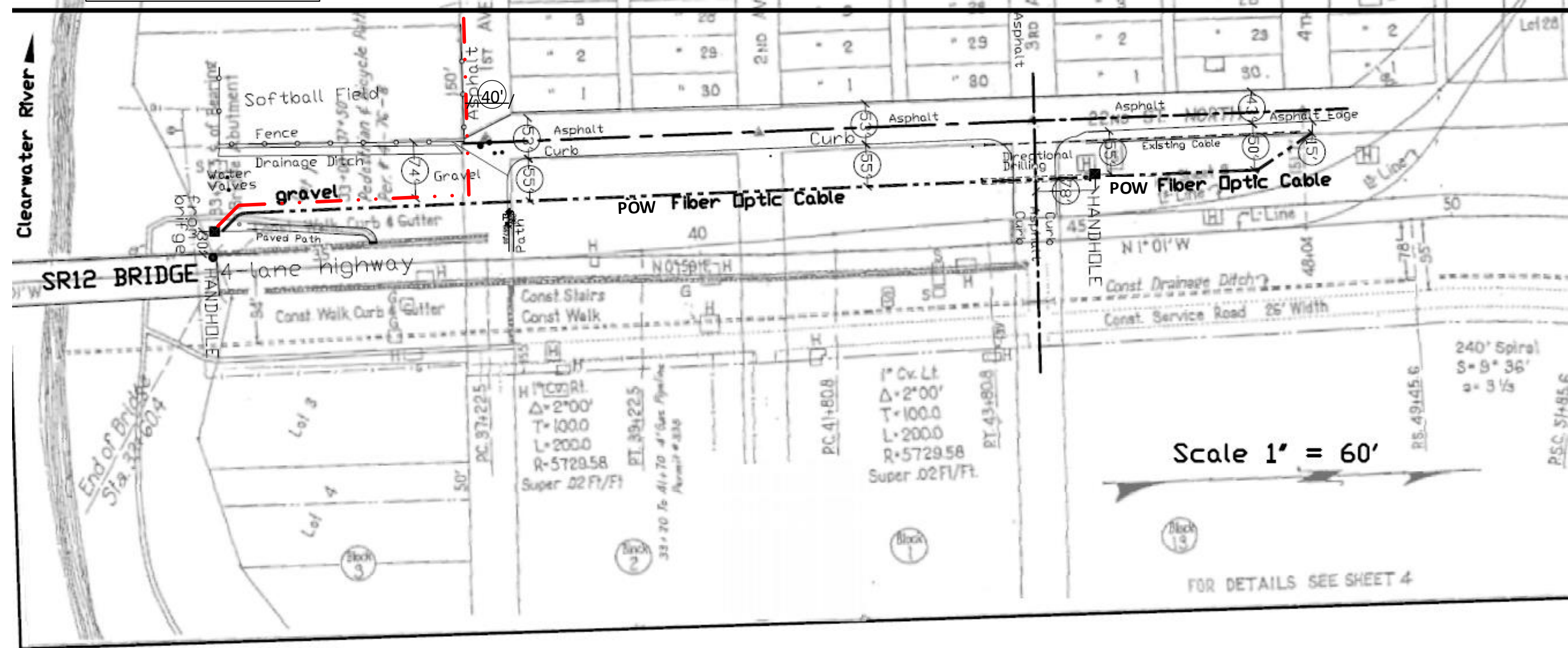


Drawing Name:Port of Lewiston	Drawn By:Ron Glessner 05-01-19				REV.				Contact Information	State:ID County:Nez Perce City:Lewiston
	2108 1 <sup>ST</sup> AVE N				REV.	DESCRIPTION	DATE	BY		
	SIZE	FSCM NO	DWG NO		REV.	DESCRIPTION	DATE	BY	Port of Lewiston Dave Doeringsfeld 208-753-5531 Outside Plant Maintenance,Ilc Ron Glessner208-661-5648	Section: Township: Range: Legal:
	SCALE	No scale	SHEET 2		REV.	DESCRIPTION	DATE	BY		





POL INSTALL ONE (1¼")  
HDPE CONDUIT PARALLEL  
TO EXISTING NORTH SOUTH  
POW CONDUIT BETWEEN  
HH AT BRIDGE AND 1<sup>ST</sup> AVE.  
THEN TURN WEST ON THE  
SOUTH SIDE OF 1<sup>ST</sup> AVE TO  
THE END OF ITD ROW.



Drawing Name: Port of Lewiston	Drawn By: Ron Glessner 05-01-19			
	2108 1 <sup>st</sup> Ave N			
	SIZE	FSCM NO	DWG NO	REV
	SCALE		SHEET 3	

REV.	DESCRIPTION	DATE	BY
REV.	DESCRIPTION	DATE	BY
REV.	DESCRIPTION	DATE	BY
REV.	DESCRIPTION	DATE	BY
REV.	DESCRIPTION	DATE	BY

Contact Information

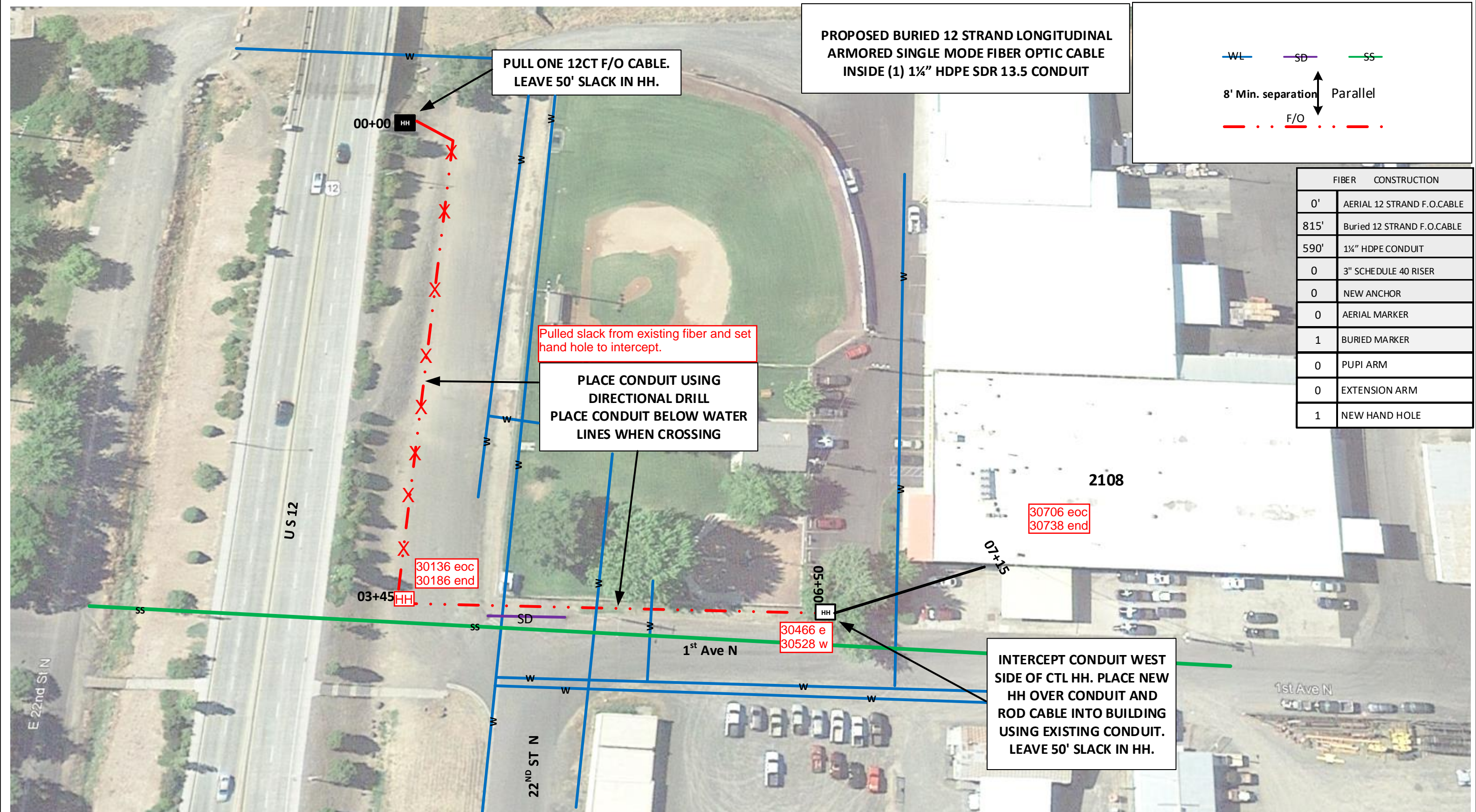
Port of Lewiston  
Dave Doeringsfeld  
208-743-5531  
Outside Plant Maintenance, LLC  
Ron Glessner 208-661-5648

State: ID  
County: Nez Perce  
City: Lewiston

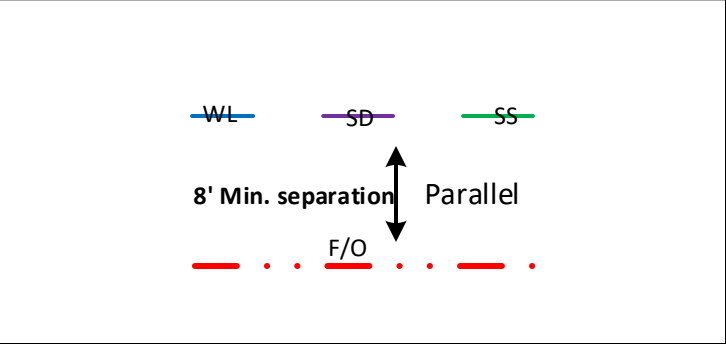
Section:  
Township:  
Range:  
Legal:







PROPOSED BURIED 12 STRAND LONGITUDINAL ARMORED SINGLE MODE FIBER OPTIC CABLE INSIDE (1) 1 1/4" HDPE SDR 13.5 CONDUIT



FIBER CONSTRUCTION	
0'	AERIAL 12 STRAND F.O.CABLE
815'	Buried 12 STRAND F.O.CABLE
590'	1 1/4" HDPE CONDUIT
0	3" SCHEDULE 40 RISER
0	NEW ANCHOR
0	AERIAL MARKER
1	BURIED MARKER
0	PUPI ARM
0	EXTENSION ARM
1	NEW HAND HOLE

Drawing Name: Port of Lewiston

Drawn By: Ron Glessner 05-01-19

2108 1<sup>ST</sup> AVE N.

SIZE

FSCM NO

DWG NO

REV

SCALE

SHEET 4

REV.

DESCRIPTION

DATE

BY

REV.

DESCRIPTION

DATE

BY

REV.

DESCRIPTION

DATE

BY

REV.

DESCRIPTION

DATE

BY

REV.

DESCRIPTION

DATE

BY

Contact Information

Port of Lewiston

Dave Doeringsfeld

208-743-5531

Outside Plant Maintenance, LLC

Ron Glessner 208-661-5648

State: ID

County: Nez Perce

City: Lewiston

Section:

Township:

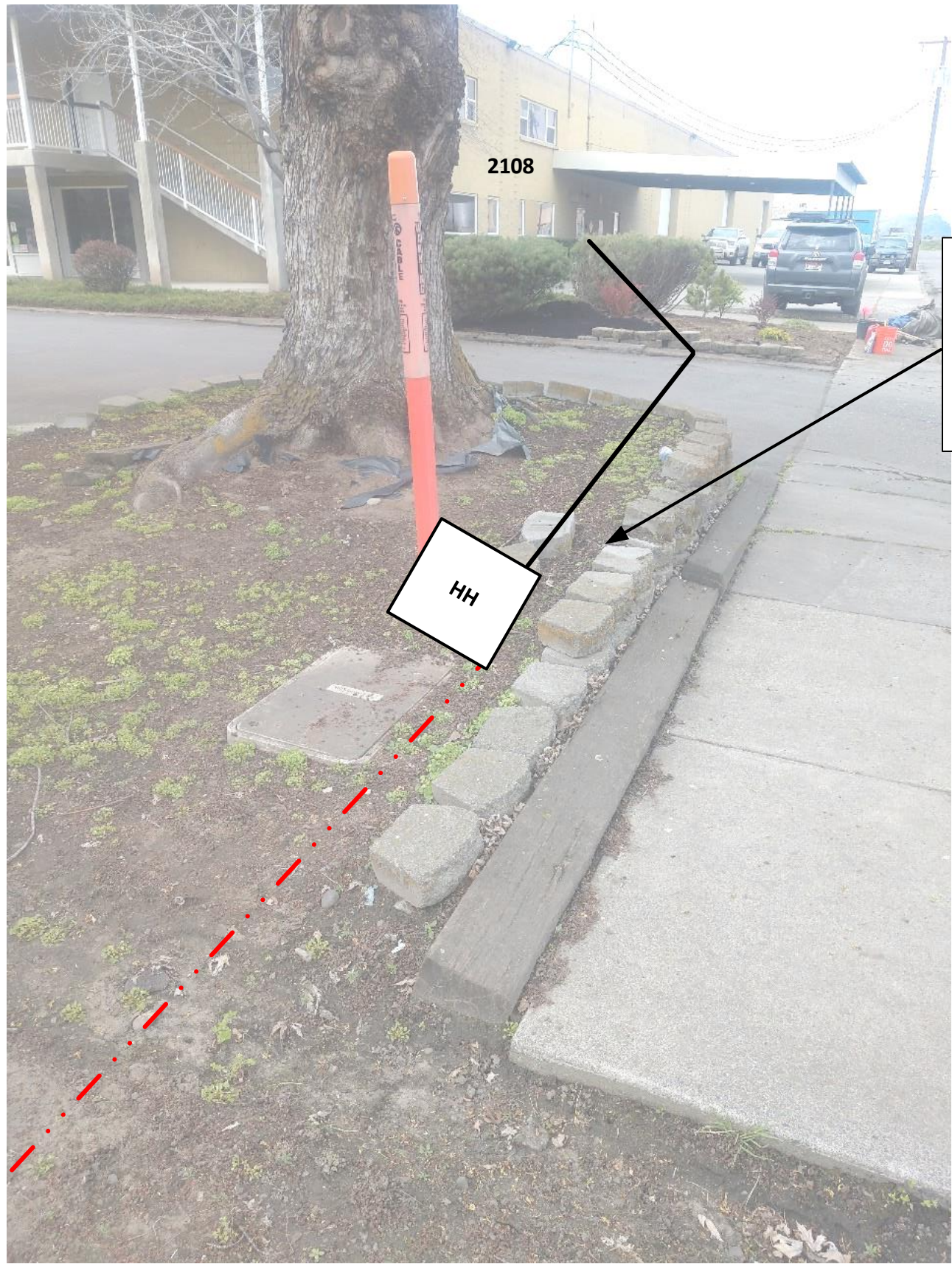
Range:

Legal:

OPM

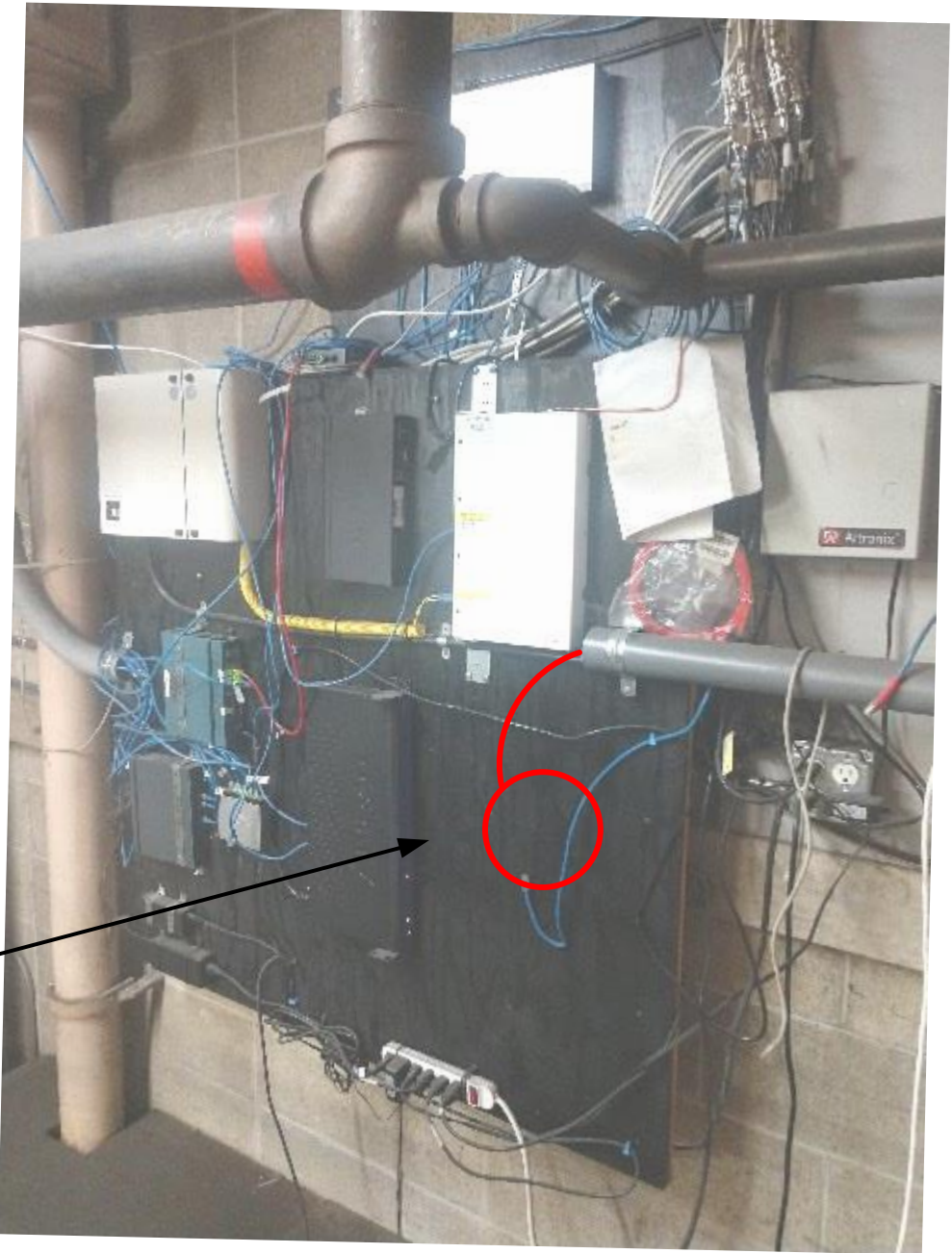
OUTSIDE PLANT MAINTENANCE





INTERCEPT EXISTING CONDUIT ON WEST SIDE OF CTL HH. PLACE NEW HH OVER EXISTING CONDUIT AND ROD FIBER CABLE THROUGH EXISTING CONDUIT INTO BUILDING.

BRING FIBER CABLE INTO BUILDING THROUGH EXISTING CONDUIT. LEAVE 25' SLACK LOOP. SPLICER ATTACH WALL MOUNT PATCH PANEL TO PLYWOOD.



Drawing Name: Port of Lewiston	Drawn By: Ron Glessner 05-01-19			
	2108 1 <sup>ST</sup> AVE N			
	SIZE	FSCM NO	DWG NO	REV
	SCALE		SHEET 5	

REV.	DESCRIPTION	DATE	BY
REV.	DESCRIPTION	DATE	BY
REV.	DESCRIPTION	DATE	BY
REV.	DESCRIPTION	DATE	BY
REV.	DESCRIPTION	DATE	BY

Contact Information

Port of Lewiston  
Dave Doeringsfeld  
208-743-5531  
Outside Plant Maintenance, llc  
Ron Glessner208-661-5648

State: ID  
County:Nez Perce  
City:Lewiston

Section:  
Township:  
Range:  
Legal:

