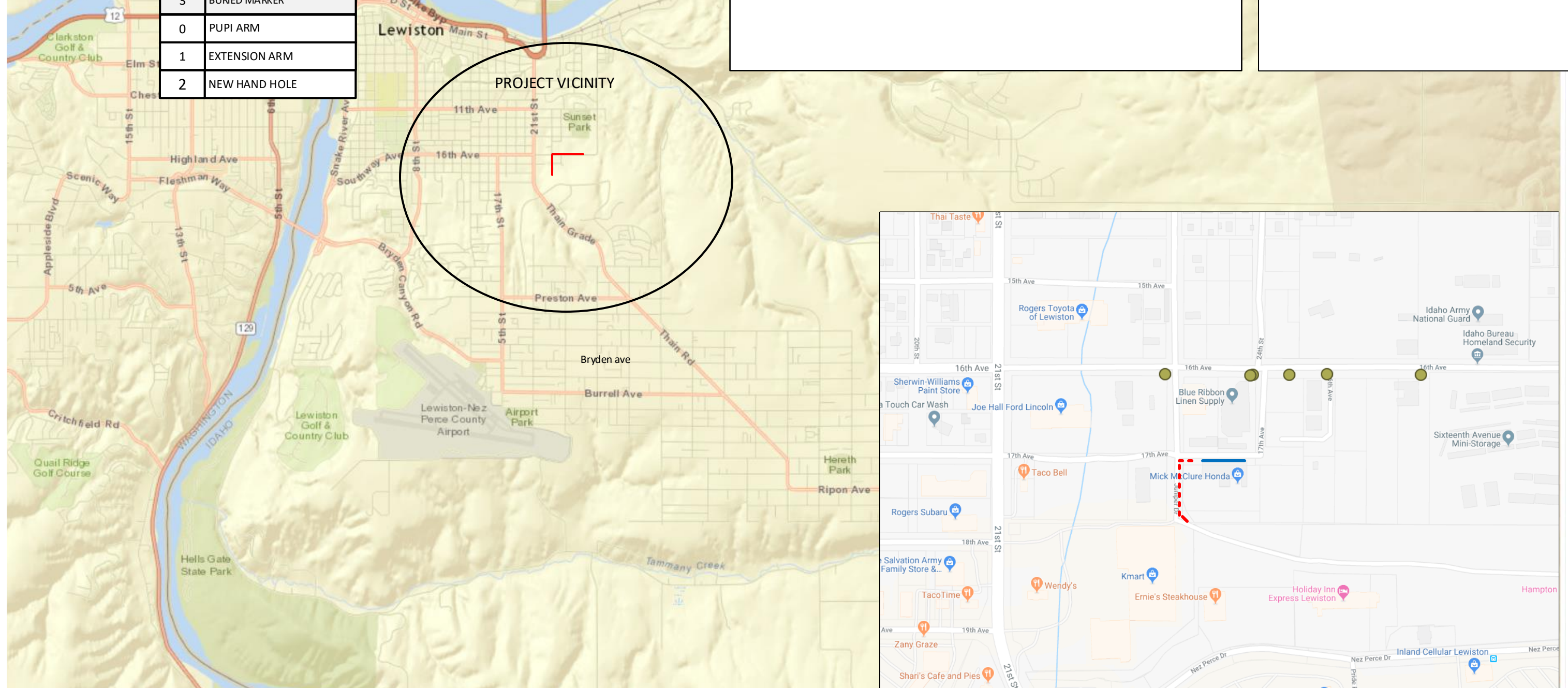


AVISTA	#
DIST. POLES	6
TXM. POLES	0
CONDUITS	0
ANCHORS	0
MGN'S	5

FIBER	CONSTRUCTION
745'	AERIAL 48 STRAND F.O.CABLE
1389'	Buried 48 STRAND F.O.CABLE
1214'	1¼" HDPE CONDUIT
2	2" SCHEDULE 40 RISER
2	NEW ANCHOR
6	AERIAL MARKER
3	BURIED MARKER
0	PUPI ARM
1	EXTENSION ARM
2	NEW HAND HOLE

Project begins at existing POL HH at 23rd street and Juniper Dr. Proceeding north on the east side of 23rd st. with buried 1¼" HDPE conduit. Then at the intersection of 23rd st. and 16th ave proceed east on the south side of 16th ave with buried 1¼" HDPE conduit to Avista pole # 428875. Transition to Aerial construction and proceed east on the south side of 16th ave to Avista pole #164983.

CONTACTS:
 AVISTA: STEVE SCHULTE – 509-495-2548
 CENTURY LINK: Rick Harms – 509-235-3349
 CABLE ONE: TOM DONOHUE – 208-791-5032
 X O COMM. : STEVE STYERN – 509-444-8547



Drawing Name: Port of Lewiston		Drawn By: Ron Glessner 10-26-18	
2604 16TH AVE			
SIZE	FSCM NO	DWG NO	REV
SCALE		SHEET 1	

REV.	DESCRIPTION	DATE	BY

Contact Information
 Port of Lewiston
 Dave Doeringsfeld
 208-743-5531
 Outside Plant Maintenance, llc
 Ron Glessner 208-661-5648

State: ID
 County: Nez Perce
 City: Lewiston
 Section:
 Township:
 Range:
 Legal:



GENERAL CONSTRUCTION NOTES

CONTRACTOR IS RESPONSIBLE FOR ALL PERMITS EXCEPT STATE HWY., COUNTY ROAD,RAILROAD OR WATER CROSSINGS.

RESTORATION OF ALL RIGHT OF WAY GROUND WILL BE RESTORED TO ORIGINAL CONDITION OR BETTER.

CONTRACTOR WILL COORDINATE WITH OSP MANAGER 24 HRS. PRIOR TO BEGINNING CONSTRUCTION. CALL OSP MANAGER WHEN CONSTRUCTION IS COMPLETED. RON 208-661-5648

OSP MANAGER WILL CONTACT BUILDING OWNER/TENANT 24 HRS. PRIOR TO BEGINNING CONSTRUCTION TO COORDINATE ACCESS TO BUILDINGS.

CONTRACTOR IS RESPONSIBLE FOR CALLING LOCATES AND IS RESPONSIBLE FOR REPAIR AND RESTORATION OF DAMAGED UTILITIES.

FOLLOW ALL NESC CONSTRUCTION GUIDELINES.

CONTRACTOR WILL HAVE ON SITE THE APPROVED DRAWINGS FROM THE UTILITY AND OR STATE,COUNTY,CITY,RAILROAD.

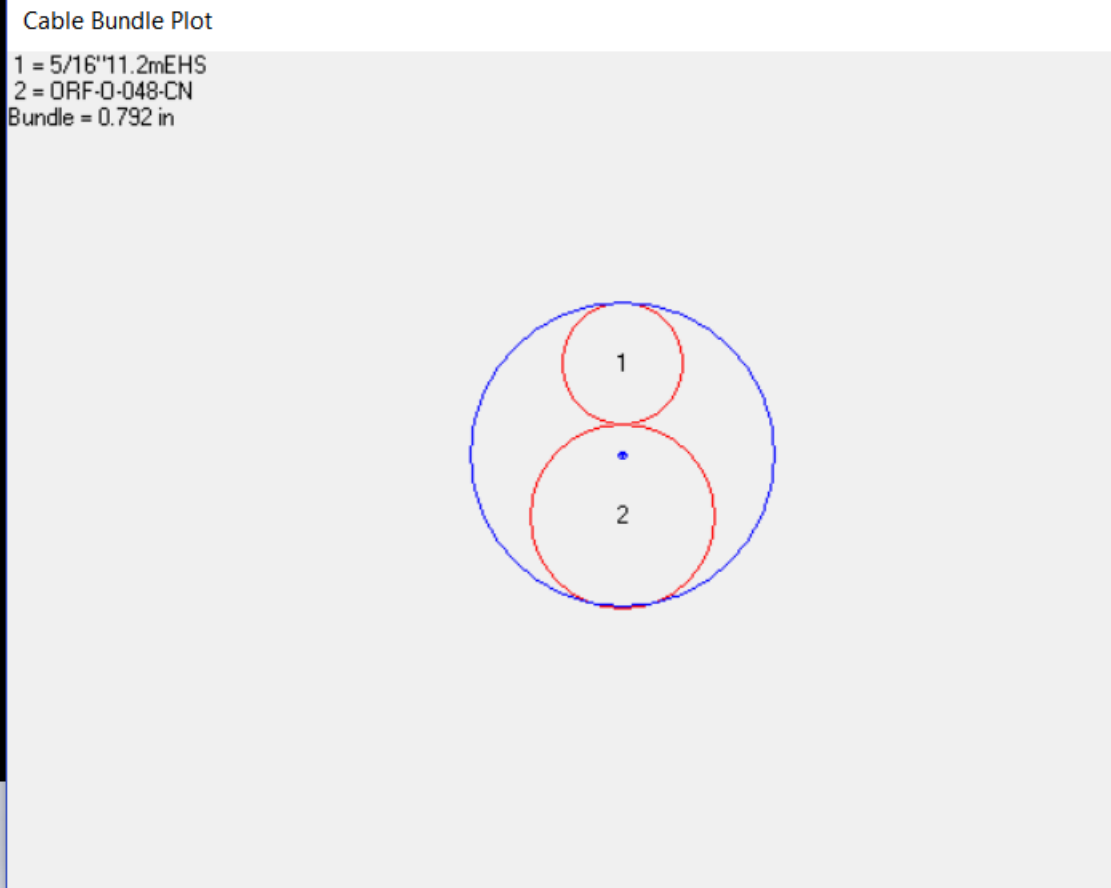
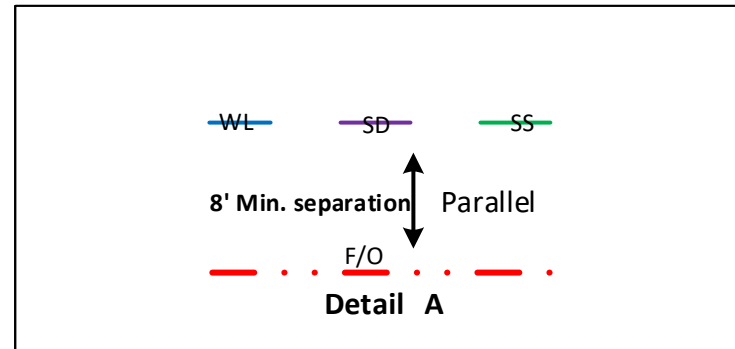
CONTRACTOR WILL PROVIDE CONDUIT , HAND HOLES , ANCHORS, AERIAL HARDWARE , LOCATE WIRE

PORT OF LEWISTON (POL) WILL PROVIDE , FIBER OPTIC CABLE , AERIAL MARKERS , AND LINE ROUTE MARKERS.

ABBREVIATIONS:

TIP	TOP INSIDE POSITION
TOP	TOP OUTSIDE POSITION
BIP	BOTTOM INSIDE POSITION
BOP	BOTTOM OUTSIDE POSTION
EA	EXTENSION ARM
PEA	PLACE EXTENSION ARM
RS	ROAD SIDE
FS	FIELD SIDE
DE	DEAD END
HOA	HEIGHT OF ATTACHMENT

	CULVERT
	DIRECTIONAL BORE
	AERIAL CABLE
	BURIED CABLE
	NEW ANCHOR
	SIDEWALK ANCHOR
	EXISTING ANCHOR
	OVERHEAD GUY
	ATTACH TO POLE GROUND
	FIBER SLACK LOOP
	FOREIGN POLE
	CABLE CHANGE
	BURIED ROUTE MARKER
	EXISTING HAND HOLE
	NEW HAND HOLE




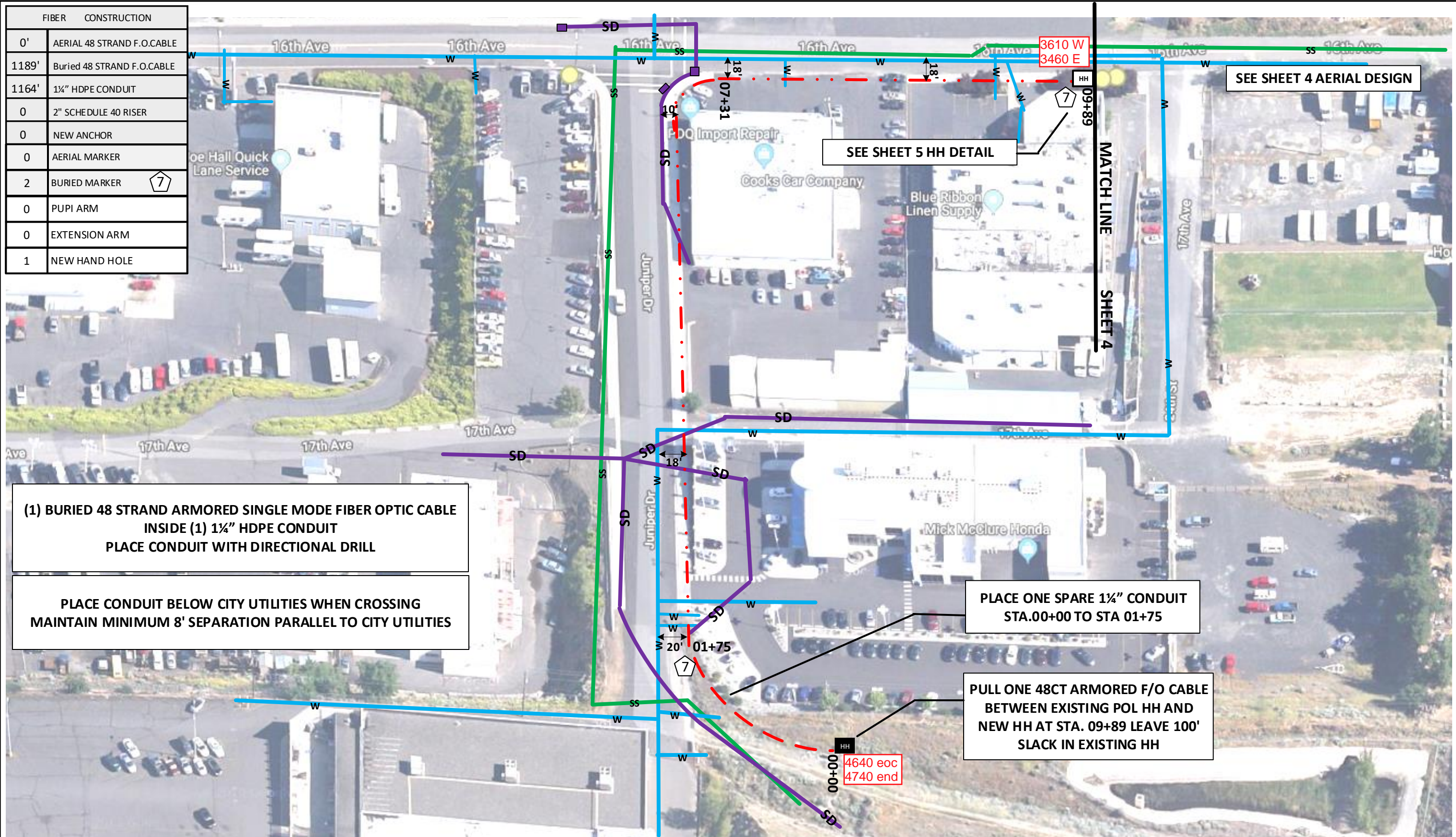
Drawing Name:Port of Lewiston	Drawn By:Ron Glessner 10-26-18			
	2604 16TH AVE			
SIZE	FSCM NO	DWG NO	REV	
SCALE	No scale	SHEET 2		

REV.	DESCRIPTION	DATE	BY

Contact Information Port of Lewiston Dave Doeringsfeld 208-743-5531 Outside Plant Maintenance, llc Ron Glessner208-661-5648	State:ID. County:Nez Perce City: Lewiston
	Section: Township: Range: Legal:



FIBER	CONSTRUCTION
0'	AERIAL 48 STRAND F.O.CABLE
1189'	Buried 48 STRAND F.O.CABLE
1164'	1 1/4" HDPE CONDUIT
0	2" SCHEDULE 40 RISER
0	NEW ANCHOR
0	AERIAL MARKER
2	BURIED MARKER 
0	PUPI ARM
0	EXTENSION ARM
1	NEW HAND HOLE



**(1) BURIED 48 STRAND ARMORED SINGLE MODE FIBER OPTIC CABLE
INSIDE (1) 1 1/4" HDPE CONDUIT
PLACE CONDUIT WITH DIRECTIONAL DRILL**

**PLACE CONDUIT BELOW CITY UTILITIES WHEN CROSSING
MAINTAIN MINIMUM 8' SEPARATION PARALLEL TO CITY UTILITIES**

**PLACE ONE SPARE 1 1/4" CONDUIT
STA.00+00 TO STA 01+75**

**PULL ONE 48CT ARMORED F/O CABLE
BETWEEN EXISTING POL HH AND
NEW HH AT STA. 09+89 LEAVE 100'
SLACK IN EXISTING HH**

Drawing Name:Port of Lewiston	
SIZE	FSCM NO
SCALE	SHEET 3

Drawn By: Ron Glessner 10-26-18	
2604 16TH AVE	
DWG NO	REV

REV.	DESCRIPTION	DATE	BY

Contact Information

 Port of Lewiston
 Dave Doeringsfeld
 208-743-5531
 Outside Plant Maintenance, llc
 Ron Glessner 208-661-5648

State: ID
 County: Nez Perce
 City: Lewiston

 Section:
 Township:
 Range:
 Legal:



(1) AERIAL 48 STRAND SINGLE MODE FIBER OPTIC CABLE ON 5/16" EHS MESSENGER

AVISTA	#	FIBER	CONSTRUCTION
DIST. POLES	6	745'	AERIAL 48 STRAND F.O.CABLE
TXM. POLES	0	200'	Buried 48 STRAND F.O.CABLE
CONDUITS	0	50'	1 1/4" HDPE CONDUIT
ANCHORS	0	2	2" SCHEDULE 40 RISER
MGN'S	5	2	NEW ANCHOR
		6	AERIAL MARKER
		1	BURIED MARKER
		0	PUPI ARM
		1	EXTENSION ARM
		1	NEW HAND HOLE

C 1 INSTALL EA 19' BOND TO GROUND POL INSTALL DG AND ANCHOR W. SIDE

09+89	3432		
POLE #	428875		
POLE CLASS	CL-3 45'		
ATTACHMENTS	HOA POSITION MISC		
3 RACK	23'4"		
RISER	22'10"		
Cable One	19'	RS	
Proposed POL	18'	RS	

SEE RISER DETAIL SHEET 5

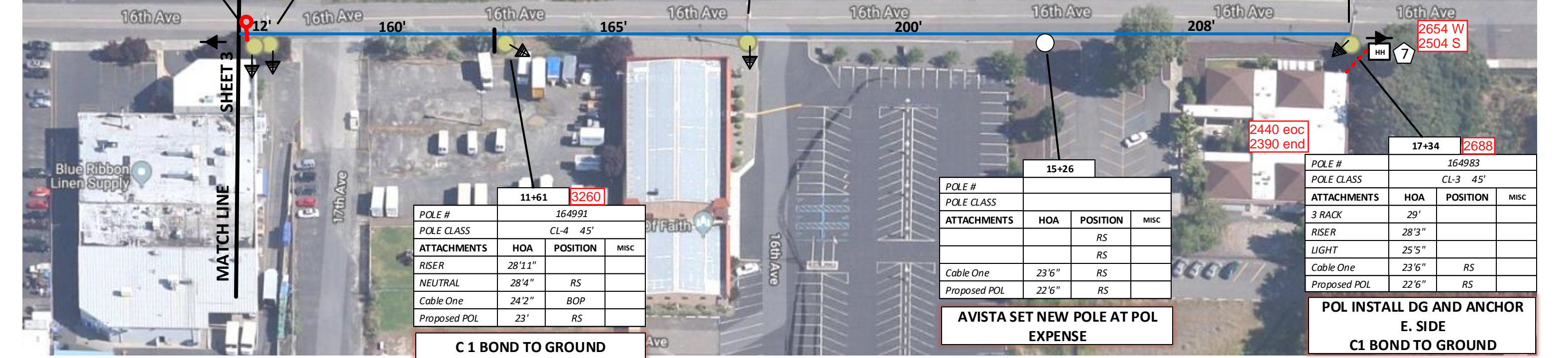
C 1 LOWER HOA 5" BOND TO GROUND

10+01	3420		
POLE #	166830		
POLE CLASS	CL-3 40'		
ATTACHMENTS	HOA POSITION MISC		
RISER	21'4"		
LIGHT	20'9"		
Cable One	18'5"	RS	18'
Proposed POL	17'	RS	

C 1 BOND TO GROUND

13+26	3094		
POLE #	164990		
POLE CLASS	CL-4 40'		
ATTACHMENTS	HOA POSITION MISC		
3 RACK	23'9"		
RISER	22'5"		
Cable One	19'	RS	
Proposed POL	18'	RS	

SEE RISER DETAIL SHEET 5
SEE HH DETAIL SHEET 5



11+61	3260		
POLE #	164991		
POLE CLASS	CL-4 45'		
ATTACHMENTS	HOA POSITION MISC		
RISER	28'11"		
NEUTRAL	28'4"	RS	
Cable One	24'2"	BOP	
Proposed POL	23'	RS	

C 1 BOND TO GROUND

15+26			
POLE #			
POLE CLASS			
ATTACHMENTS	HOA POSITION MISC		
		RS	
		RS	
Cable One	23'6"	RS	
Proposed POL	22'6"	RS	

AVISTA SET NEW POLE AT POL EXPENSE

17+34	2688		
POLE #	164983		
POLE CLASS	CL-3 45'		
ATTACHMENTS	HOA POSITION MISC		
3 RACK	29'		
RISER	28'3"		
LIGHT	25'5"		
Cable One	23'6"	RS	
Proposed POL	22'6"	RS	

POL INSTALL DG AND ANCHOR E. SIDE
C1 BOND TO GROUND

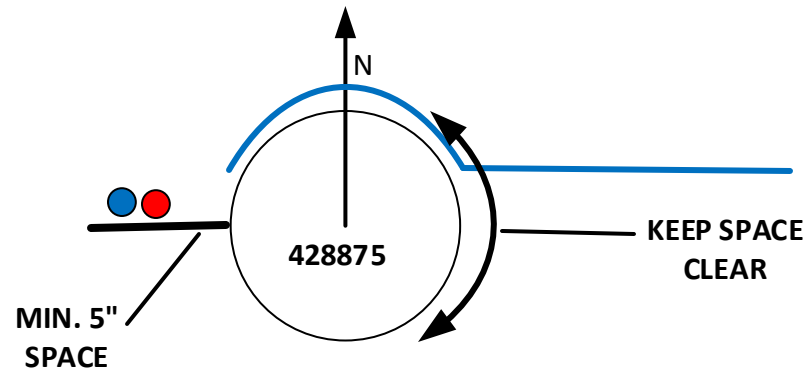
Drawing Name: Port of Lewiston		Drawn By: Ron Glessner 10-26-18	
2604 16TH AVE			
SIZE	FSCM NO	DWG NO	REV
SCALE			SHEET 4

REV.	DESCRIPTION	DATE	BY

Contact Information	State: ID County: Nez Perce City: Lewiston
Port of Lewiston Dave Doeringsfeld 208-743-5531 Outside Plant Maintenance, llc Ron Glessner 208-661-5648	Section: Township: Range: Legal:

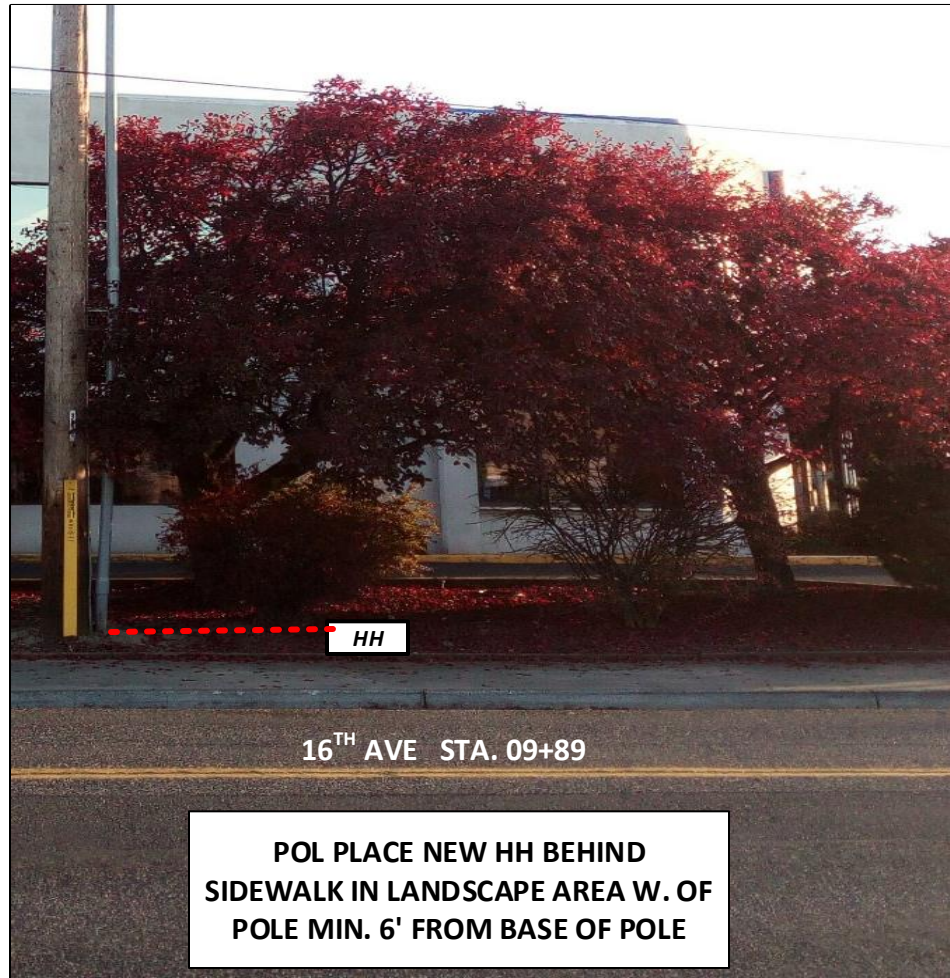


- = AVISTA
- = POL

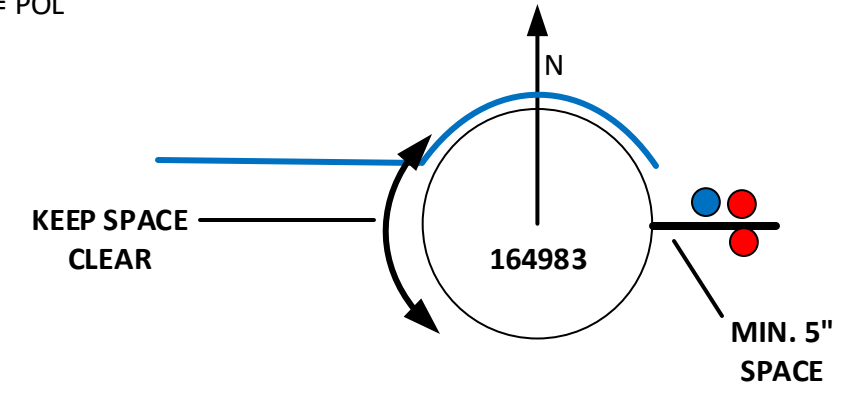


POL INSTALL ONE (2") RISER ON EXISTING STANDOFF W. SIDE

STA. 09+89

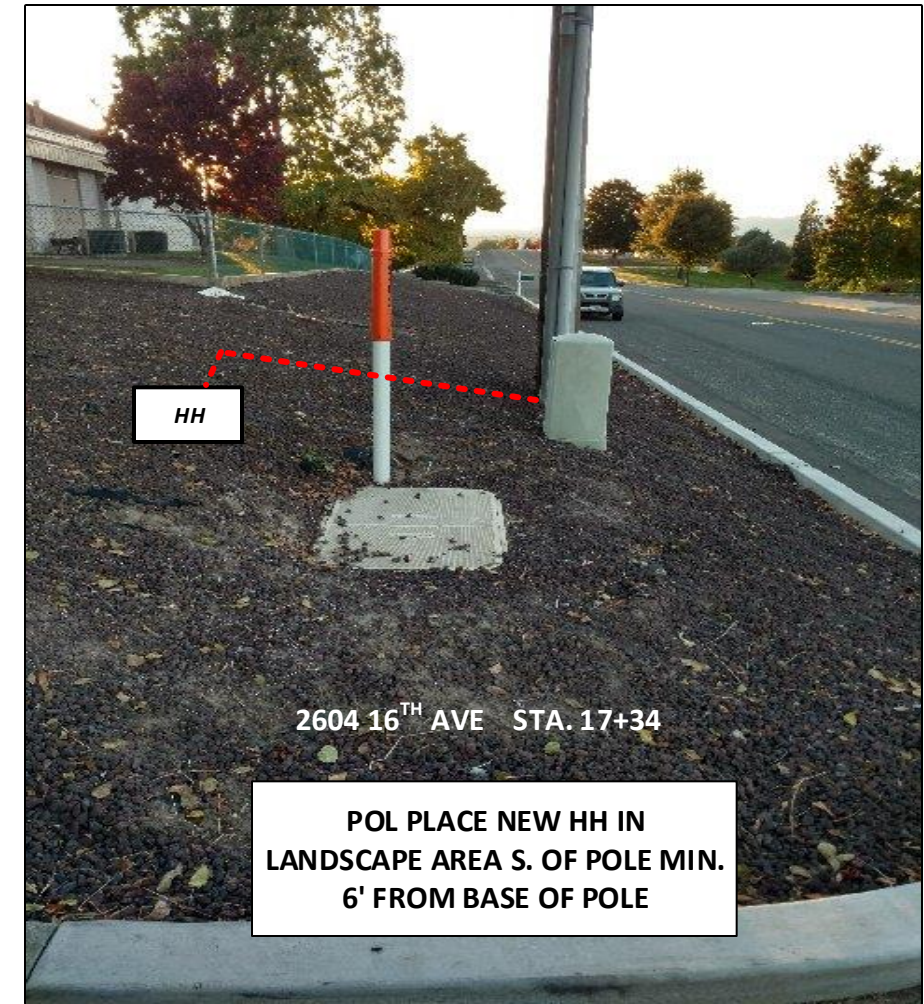


- = AVISTA
- = POL



POL INSTALL ONE (2") RISER ON EXISTING STANDOFF E. SIDE

STA. 17+34



Drawing Name: Port of Lewiston		Drawn By: Ron Glessner 10-26-18			
2604 16TH AVE					
SIZE	FSCM NO	DWG NO	REV		
SCALE			SHEET 5		

REV.	DESCRIPTION	DATE	BY

Contact Information		State: ID County: Nez Perce City: Lewiston	
Port of Lewiston Dave Doeringsfeld 208-743-5531 Outside Plant Maintenance, llc Ron Glessner 208-661-5648		Section: Township: Range: Legal:	



Make Ready Summary	
Cable One	
Stationing	Description of work
09+89	Install EA 19'
09+89	Bond to Ground
10+01	Lower HOA 5" Bond to Ground
11+61	Bond to Ground
13+26	Bond to Ground
17+34	Bond to Ground

Make Ready Summary	
Century Link	
Stationing	Description of Work

Make Ready Summary	
X O Communications	
Stationing	Description of Work

Make Ready Summary	
Avista	
Stationing	Description of Work
15+26	Inset new pole

Make Ready Summary	
LEWISTON SCHOOL DISTRICT	
Stationing	Description of Work

Drawing Name: Port of Lewiston	10-26-18			
	2604 16 th AVE			
	SIZE	FSCM NO	DWG NO	REV
	SCALE		SHEET 6	

REV.	DESCRIPTION	DATE	BY

Contact Information

Port of Lewiston
 Dave Doeringsfeld
 208-743-5531
 Outside Plant Maintenance, LLC
 Ron Glessner 208-661-5648

State: ID
 County: Nez Perce
 City: Lewiston

Section:
 Township:
 Range:
 Legal:

