

CONTACT RYAN HARRIS / NORCO
208-743-8384
FOR BUILDING ENTRY

PROJECT IS LOCATED AT 863 MAIN STREET IN LEWISTON. AT THE INTERSECTION OF 9TH AND MAIN STREET.

Drawing Name: Port of Lewiston		Fielded by Ron Glessner 02-07-18	
863 MAIN STREET			
SIZE	FSCMNO	REV	
SCALE	SHEET 1		Cover

	Revised	03-14-18	RG
REV.	DESCRIPTION	DATE	BY
REV.	DESCRIPTION	DATE	BY

Contact Information

Port of Lewiston
Dave Doeringsfeld
208-743-5531
Outside Plant Maintenance, llc
Ron Glessner 208-661-5648

State: ID
County: Nez Perce
City: Lewiston

Section:
Township:
Range:
Legal:



GENERAL CONSTRUCTION NOTES

CONTRACTOR IS RESPONSIBLE FOR ALL PERMITS EXCEPT STATE HWY., COUNTY ROAD,RAILROAD OR WATER CROSSINGS.

RESTORATION OF ALL RIGHT OF WAY GROUND WILL BE RESTORED TO ORIGINAL CONDITION OR BETTER.

CONTRACTOR WILL COORDINATE WITH OSP MANAGER 24 HRS. PRIOR TO BEGINNING CONSTRUCTION.

OSP MANAGER WILL CONTACT BUILDING OWNER/TENANT 24 HRS. PRIOR TO BEGINNING CONSTRUCTION TO COORDINATE ACCESS TO BUILDINGS.

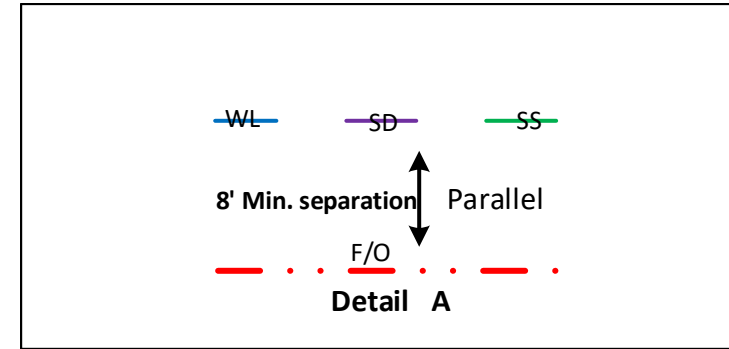
CONTRACTOR IS RESPONSIBLE FOR CALLING LOCATES AND IS RESPONSIBLE FOR REPAIR AND RESTORATION OF DAMAGED UTILITIES.

FOLLOW ALL NESC CONSTRUCTION GUIDELINES.

CONTRACTOR WILL HAVE ON SITE THE APPROVED DRAWINGS FROM THE UTILITY AND OR STATE,COUNTY,CITY,RAILROAD.

CONTRACTOR WILL PROVIDE CONDUIT , HAND HOLES , ANCHORS, AERIAL HARDWARE , LOCATE WIRE

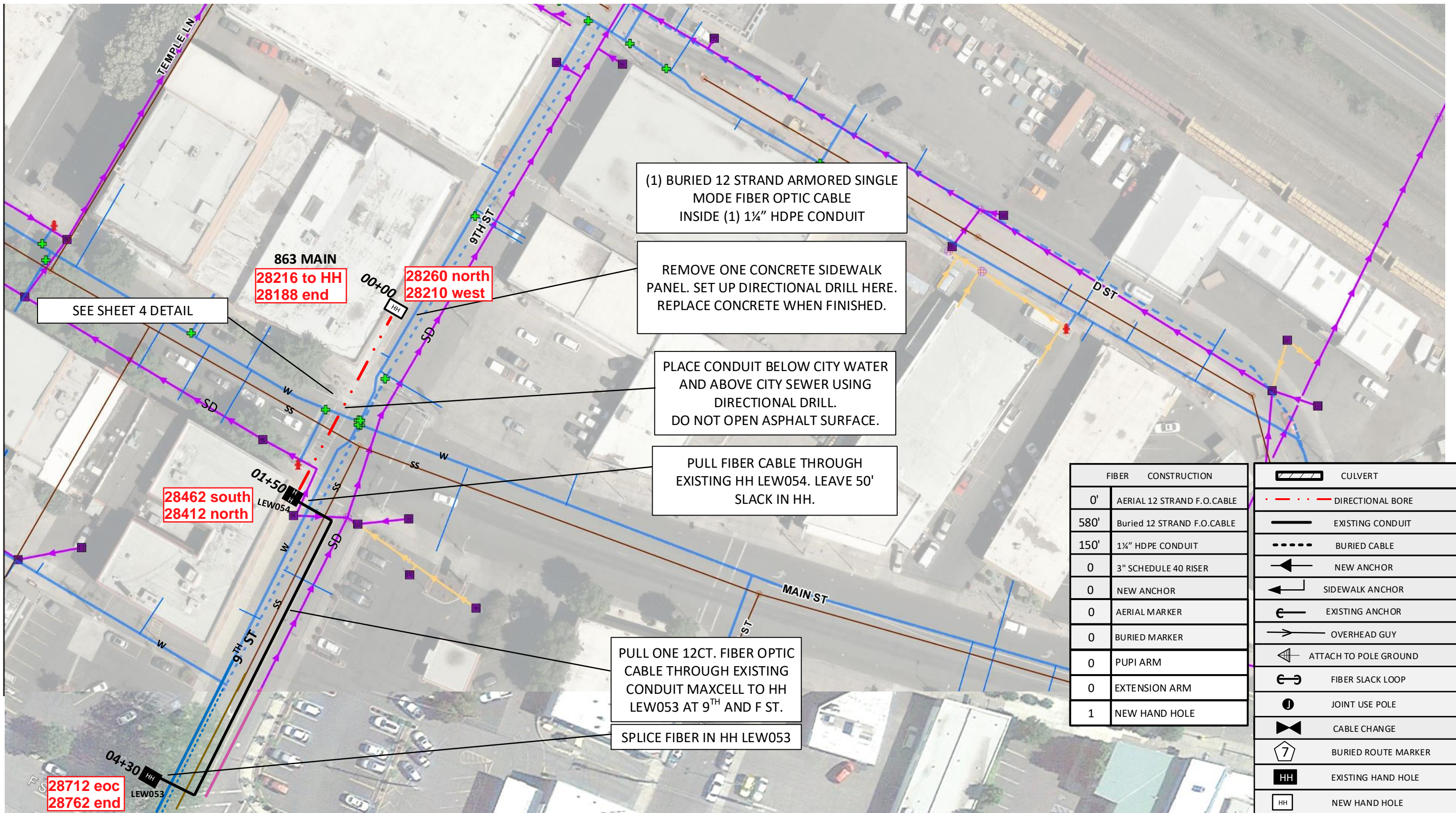
PORT OF LEWISTON (POL) WILL PROVIDE , FIBER OPTIC CABLE , AERIAL MARKERS , AND LINE ROUTE MARKERS.



	CULVERT
	DIRECTIONAL BORE
	EXISTING CONDUIT
	BURIED CABLE
	NEW ANCHOR
	SIDEWALK ANCHOR
	EXISTING ANCHOR
	OVERHEAD GUY
	ATTACH TO POLE GROUND
	FIBER SLACK LOOP
	JOINT USE POLE
	CABLE CHANGE
	BURIED ROUTE MARKER
	EXISTING HAND HOLE
	NEW HAND HOLE

Drawing Name:Port of Lewiston	Drawn By:Ron Glessner 02-07-18				Revised	03-14-18	RG	Contact Information Port of Lewiston Dave Doeringsfeld 208-743-5531 Outside Plant Maintenance,llc Ron Glessner208-661-5648	State:ID. County:Nez Perce City: Lewiston
	863 MAIN STREET				REV.	DESCRIPTION	DATE		
	SIZE	FSCMNO	DWG NO	REV	REV.	DESCRIPTION	DATE	BY	Section: Township: Range: Legal:
	SCALE	No scale	SHEET 2		REV.	DESCRIPTION	DATE	BY	





(1) BURIED 12 STRAND ARMORED SINGLE MODE FIBER OPTIC CABLE INSIDE (1) 1 1/4" HDPE CONDUIT

REMOVE ONE CONCRETE SIDEWALK PANEL. SET UP DIRECTIONAL DRILL HERE. REPLACE CONCRETE WHEN FINISHED.

PLACE CONDUIT BELOW CITY WATER AND ABOVE CITY SEWER USING DIRECTIONAL DRILL. DO NOT OPEN ASPHALT SURFACE.

PULL FIBER CABLE THROUGH EXISTING HH LEW054. LEAVE 50' SLACK IN HH.

PULL ONE 12CT. FIBER OPTIC CABLE THROUGH EXISTING CONDUIT MAXCELL TO HH LEW053 AT 9TH AND F ST.

SPLICE FIBER IN HH LEW053

FIBER	CONSTRUCTION
0'	AERIAL 12 STRAND F.O.CABLE
580'	Buried 12 STRAND F.O.CABLE
150'	1 1/4" HDPE CONDUIT
0	3" SCHEDULE 40 RISER
0	NEW ANCHOR
0	AERIAL MARKER
0	BURIED MARKER
0	PUPI ARM
0	EXTENSION ARM
1	NEW HAND HOLE

	CULVERT
	DIRECTIONAL BORE
	EXISTING CONDUIT
	BURIED CABLE
	NEW ANCHOR
	SIDEWALK ANCHOR
	EXISTING ANCHOR
	OVERHEAD GUY
	ATTACH TO POLE GROUND
	FIBER SLACK LOOP
	JOINT USE POLE
	CABLE CHANGE
	BURIED ROUTE MARKER
	EXISTING HAND HOLE
	NEW HAND HOLE

Drawing Name: Port of Lewiston		Drawn By: Ron Glessner 02-07-18	
863 MAIN STREET			
SIZE	FSCMNO	DWG NO	REV
SCALE		SHEET 3	

REV.	DESCRIPTION	DATE	BY
REV.	Revised	03-14-18	RG
REV.	DESCRIPTION	DATE	BY
REV.	DESCRIPTION	DATE	BY
REV.	DESCRIPTION	DATE	BY
REV.	DESCRIPTION	DATE	BY

Contact Information
 Port of Lewiston
 Dave Doeringsfeld
 208-743-5531
 Outside Plant Maintenance, llc
 Ron Glessner 208-661-5648

State: ID
 County: Nez Perce
 City: Lewiston
 Section:
 Township:
 Range:
 Legal:

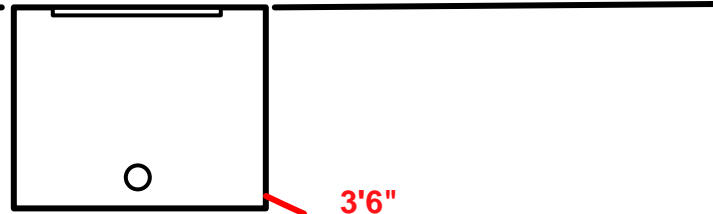


9TH STREET

MAIN STREET

9TH STREET

EXISTING POL HH



3'6"

4'1"

5'

6'4"

7'6"

14'

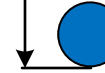
8'6"

10'3"

POL 1 1/4" HDPE CONDUIT

36" SEWER

12" WATER



5'

7'



Drawing Name: Port of Lewiston		Drawn By: Ron Glessner 02-07-18			
		863 MAIN			
SIZE	FSCMNO	DWG NO		REV	
SCALE		SHEET 4			

REV.	DESCRIPTION	DATE	BY
Revised		03-14-18	RG

Contact Information		State: ID County: Nez Perce City: Lewiston	
Port of Lewiston Dave Doeringsfeld 208-743-5531 Outside Plant Maintenance, llc Ron Glessner 208-661-5648		Section: Township: Range: Legal:	

